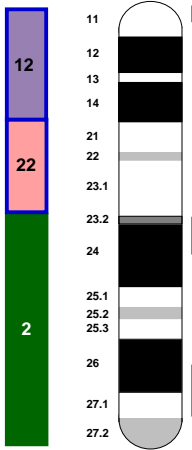


# CFA 10



H181  
H203  
C04107

Gene	Coordinates	Gene	Coordinates
CPOR16G01	[ 2 2 2 2 2 ] (1)	CPOR16F03	[ 24 24 24 24 24 ] (24)
CPOR18C12	[ 3 3 3 3 3 ] (2)	BAC_376-017	[ 14 14 14 14 14 ] (14)
		EST8E12	[ 32 32 32 32 32 ] (32)
		PH2537 ***	[ 34 34 34 34 34 ] (34)
		ATP5B	[ 4 4 4 4 4 ] (4)
		EST19G5	[ 31 31 2 31 31 ] (31)
AHTH181REN	[ 2 2 31 2 2 ] (2)	FH4081 ***	[ 40 40 40 40 40 ] (40)
EST12E5	[ 27 27 27 27 27 ] (27)	PH3921	[ 39 39 39 39 39 ] (39)
REN171024	[ 49 49 49 49 49 ] (49)	MDM2	[ 43 43 43 43 43 ] (43)
EST11H10	[ 26 26 26 26 26 ] (26)	LYZ	[ 21 21 42 42 42 ] (42)
FH4081 ***	[ 40 40 40 40 40 ] (40)	C10.606	[ 42 42 21 21 21 ] (21)
PH3921	[ 39 39 39 39 39 ] (39)	DGN8	[ 25 25 25 25 25 ] (25)
MDM2	[ 43 43 43 43 43 ] (43)	C10.781 ***	[ 23 23 23 23 23 ] (23)
LYZ	[ 21 21 42 42 42 ] (42)	REN276F23	[ 51 51 51 51 51 ] (51)
C10.606	[ 42 42 21 21 21 ] (21)	AHT110	[ 1 1 1 1 1 ] (1)
DGN8	[ 25 25 25 25 25 ] (25)	BAC_381-A8	[ 15 15 15 15 15 ] (15)
C10.781 ***	[ 23 23 23 23 23 ] (23)	BAC_373-016	[ 7 7 7 7 7 ] (7)
REN276F23	[ 51 51 51 51 51 ] (51)	REN161H16	[ 48 48 48 48 44 ] (48)
AHT110	[ 1 1 1 1 1 ] (1)	REN04F08	[ 44 44 44 44 48 ] (44)
BAC_381-A8	[ 15 15 15 15 15 ] (15)	RVC8	[ 55 55 55 55 55 ] (55)
BAC_373-016	[ 7 7 7 7 7 ] (7)	STS79I13 *	[ 58 58 58 58 58 ] (58)
REN161H16	[ 48 48 48 48 44 ] (48)	REN06H21 ***	[ 45 45 45 45 45 ] (45)
REN04F08	[ 44 44 44 44 48 ] (44)	REN241P12	[ 50 50 50 50 50 ] (50)
RVC8	[ 55 55 55 55 55 ] (55)	BAC_376-G15	[ 11 11 11 11 11 ] (11)
STS79I13 *	[ 58 58 58 58 58 ] (58)	BAC_376-D1	[ 10 10 10 10 10 ] (10)
REN06H21 ***	[ 45 45 45 45 45 ] (45)	EST13B2	[ 28 28 28 28 28 ] (28)
REN241P12	[ 50 50 50 50 50 ] (50)	AHTH203REN	[ 3 3 3 3 3 ] (3)
BAC_376-G15	[ 11 11 11 11 11 ] (11)	REN108017	[ 46 46 46 46 46 ] (46)
BAC_376-D1	[ 10 10 10 10 10 ] (10)	BAC_381-I4/PH2293 ***	[ 17 17 17 17 17 ] (17)
EST13B2	[ 28 28 28 28 28 ] (28)	EST8H11	[ 33 33 33 53 33 ] (33)
AHTH203REN	[ 3 3 3 3 3 ] (3)	BAC_372-I4	[ 5 5 5 36 36 ] (5)
REN108017	[ 46 46 46 46 46 ] (46)	FH2703	[ 35 35 35 33 53 ] (35)
BAC_381-I4/PH2293 ***	[ 17 17 17 17 17 ] (17)	REN68B08	[ 53 53 53 35 5 ] (53)
EST8H11	[ 33 33 33 53 33 ] (33)	FH3055	[ 36 36 36 5 35 ] (36)
BAC_372-I4	[ 5 5 5 36 36 ] (5)	C10.769	[ 22 22 22 22 22 ] (22)
FH2703	[ 35 35 35 33 53 ] (35)	STS305E23 *	[ 56 56 56 56 56 ] (56)
REN68B08	[ 53 53 53 35 5 ] (53)	BAC_382-M2	[ 19 19 19 19 19 ] (19)
FH3055	[ 36 36 36 5 35 ] (36)	BAC_382-K23	[ 18 18 18 18 18 ] (18)
C10.769	[ 22 22 22 22 22 ] (22)	STS310M20 *	[ 57 57 57 57 57 ] (57)
STS305E23 *	[ 56 56 56 56 56 ] (56)	G02512	[ 41 41 41 41 41 ] (41)
BAC_382-M2	[ 19 19 19 19 19 ] (19)	REN50P09	[ 52 52 52 52 52 ] (52)
BAC_382-K23	[ 18 18 18 18 18 ] (18)	REN73F08	[ 54 54 47 54 54 ] (54)
STS310M20 *	[ 57 57 57 57 57 ] (57)	ZUBECA1 ***	[ 59 59 29 59 59 ] (59)
G02512	[ 41 41 41 41 41 ] (41)	EST18E2-B	[ 30 30 12 30 30 ] (30)
REN50P09	[ 52 52 52 52 52 ] (52)	REN150B12	[ 47 47 13 47 47 ] (47)
REN73F08	[ 54 54 47 54 54 ] (54)	EST13G10	[ 29 29 9 29 29 ] (29)
ZUBECA1 ***	[ 59 59 29 59 59 ] (59)	EST11D3/AHT101/BAC_376-B9	[ 9 9 30 9 9 ] (9)
EST18E2-B	[ 30 30 12 30 30 ] (30)	EST7C9/BAC_376-M19	[ 13 13 59 13 13 ] (13)
REN150B12	[ 47 47 13 47 47 ] (47)	BAC_376-G3	[ 12 12 54 12 12 ] (12)
EST13G10	[ 29 29 9 29 29 ] (29)	FH3403	[ 38 38 8 38 38 ] (38)
EST11D3/AHT101/BAC_376-B9	[ 9 9 30 9 9 ] (9)	EST14E12/REN181G20/BAC_381-F11	[ 16 16 6 16 16 ] (16)
EST7C9/BAC_376-M19	[ 13 13 59 13 13 ] (13)	FH3302	[ 37 37 37 37 37 ] (37)
BAC_376-G3	[ 12 12 54 12 12 ] (12)	BAC_372-018 *	[ 6 6 16 6 6 ] (6)
FH3403	[ 38 38 8 38 38 ] (38)	BAC_374-C23	[ 8 8 38 8 8 ] (8)
EST14E12/REN181G20/BAC_381-F11	[ 16 16 6 16 16 ] (16)	C10.16 ***	[ 20 20 20 20 20 ] (20)
FH3302	[ 37 37 37 37 37 ] (37)	F5HR	[ 22 22 22 22 22 ] (22)
BAC_372-018 *	[ 6 6 16 6 6 ] (6)	EST14C3	[ 11 11 11 11 11 ] (11)
BAC_374-C23	[ 8 8 38 8 8 ] (8)	EST18H1-B	[ 14 14 14 14 14 ] (14)
C10.16 ***	[ 20 20 20 20 20 ] (20)	BAC_375-M10/FH2422 ***	[ 2 2 2 2 2 ] (2)
F5HR	[ 22 22 22 22 22 ] (22)	PH3448	[ 21 21 21 21 21 ] (21)
EST14C3	[ 11 11 11 11 11 ] (11)	EST26H8	[ 16 16 16 16 16 ] (16)
EST18H1-B	[ 14 14 14 14 14 ] (14)		
BAC_375-M10/FH2422 ***	[ 2 2 2 2 2 ] (2)		
PH3448	[ 21 21 21 21 21 ] (21)		
EST26H8	[ 16 16 16 16 16 ] (16)		

12q13.2	[55,9]
12q13.2	[55,9]
12q13.2	[56,0]
12q13.2	[56,4]
12q13.3	[57,3]
12q13.3	[58,3]
12q14.1	[62,8]
12q14.1	[66,2]
12q15	[69,1]
12q15	[69,7]

22q13.31	[44,9]
22q13.2	[39,7]
22q13.2	[37,3]
22q12.3	[29,9]
22q12.3	[31,6]

2q12.3	[108,3]
2p21	[44,2]
2q11.2	[98,4]
2q11.2	[98,4]
2q11.2	[101,0]
2q12.3	[107,5]
2p16.3	[49,4]
2p21	[47,0]
2p21	[47,8]
2p16.2	[54,2]

Size	Scale
80 Mb	1 Mb = 84 U
6722 U	1 U = 12 Kb

