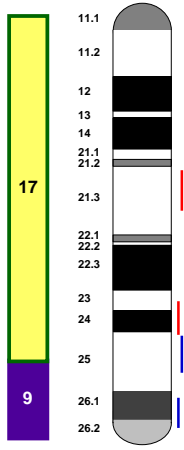
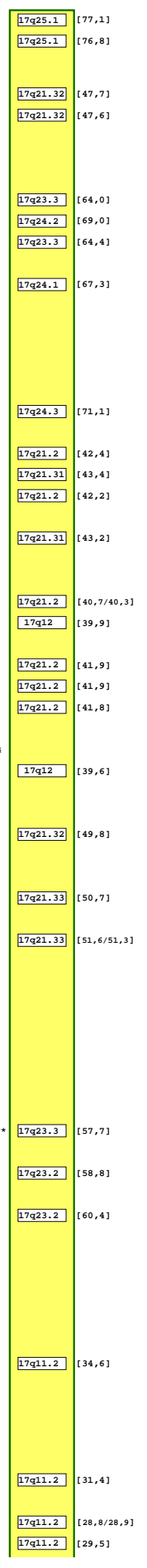


# CFA 9



Coordinate	Gene/Feature	Orientation	Map Position
72	SRP68	+	[77,1]
72	GALK1	+	[76,8]
40	MYL4	+	[47,7]
10	EST17G11	+	[47,6]
40	BAC_376-F17	+	
10	C03304	+	
30	BAC_374-C19	+	
40	ACE	+	[64,0]
40	DDX5	+	[69,0]
31	GH1	+	[64,4]
93	FH2263	+	
63	APOH	+	[67,3]
10	BAC_372-G15	+	
40	FH3596	+	
80	STS1B10	+	
60	REN198P23	+	
60	C09.173	+	
141	KCNJ2	+	[71,1]
70	STS171C13	+	
50	RAB5C	+	[42,4]
50	BRCA1	+	[43,4]
71	EST16C5	+	[42,2]
60	FH1014	+	
50	GSPC/STS1A05	+	[43,2]
40	REN54L20	+	
10	REN144L19	+	
10	RARA/THRA	+	[40,7/40,3]
10	ERBB2	+	[39,9]
30	ZUBECA3	+	
40	GAS	+	[41,9]
61	KRT17	+	[41,9]
71	KRT9/REN01E05	+	[41,8]
30	REN75M10	+	
30	BAC_373-O24/BAC_375-O14	+	
30	HUEST-D29228	+	[39,6]
82	G06401	+	
50	REN124K12	+	
30	GNGT2	+	[49,8]
20	BAC_375-C24	+	
30	FH2700	+	
30	COL1A1	+	[50,7]
60	STS1A01	+	
50	EST26E1/EST12G4	+	[51,6/51,3]
30	FH4059	+	
60	REN126A15	+	
30	BAC_372-K17	+	
40	REN158J11	+	
60	BAC_375-B19	+	
80	BAC_372-O23	+	
40	BAC_381-K1	+	
40	FH2248	+	
20	EST5H2/FH2186/REN217P11	+	[57,7]
61	BAC_372-K12	+	
85	MPO	+	[58,8]
83	EST5A6	+	
82	EST9A7	+	[60,4]
30	DT_1314	+	
91	REN65C02	+	
62	FH2722	+	
30	BAC_385-O5	+	
40	C09.474	+	
20	REN145P07	+	
30	CCL2	+	[34,6]
30	BAC_372-C21	+	
92	FH3835	+	
23	REN42F01	+	
55	NF1	+	[31,4]
55	BAC_374-O11	+	
80	ALDOC/EST4B6	+	[28,8/28,9]
81	CRYBA1	+	[29,5]



Size	Scale
77 Mb	1 Mb = 74 U
5703 U	1 U = 14 Kb

