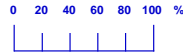
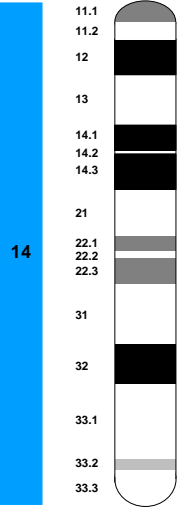


CFA 8



| Segment | Residue Range | Residue Count | Gene Name | Accession |
|---------|---------------|-------------------------|-----------------------|----------------|
| | 175 | [24 24 24 24 24] (24) | CFOR12G07 | |
| | 251 | [57 57 57 57 57] (57) | FH3241*** | |
| | 149 | [68 68 68 68 68] (68) | MMP14 | 14q11.2 [17,1] |
| | 43 | [69 69 69 69 69] (69) | MYH7 | 14q11.2 [17,7] |
| | 75 | [41 41 41 41 41] (41) | EST22B7 | 14q11.2 [17,7] |
| | 76 | [36 36 87 36 36] (36) | EST16D6 | 14q11.2 [17,6] |
| | 90 | [87 87 36 87 87] (87) | TGM1 | 14q11.2 [18,5] |
| | 125 | [1 1 1 25 1] (1) | AHTH240REN | |
| | 155 | [25 25 25 1 25] (25) | CMAI | 14q11.2 [18,8] |
| | 145 | [79 79 79 79 79] (79) | REN248C05 | |
| | 24 | [28 7 28 28 28] (28) | E04007 | |
| | 134 | [7 28 7 7 7] (7) | BAC_373-M10 | |
| | 73 | [77 77 77 77 77] (77) | REN204K13 *** | |
| | 42 | [27 27 27 27 27] (27) | CPHL2 | |
| | 24 | [34 34 34 34 34] (34) | EST14A7-B | 14q13.1 [29,0] |
| | 84 | [86 86 86 86 86] (86) | SRP54 | 14q13.2 [29,3] |
| | 105 | [70 70 70 70 70] (70) | NFKB1A | 14q13.2 [29,7] |
| | 42 | [82 82 5 82 82] (82) | REN67013 | |
| | 73 | [48 48 48 5 5] (48) | EST4G1 | 14q13.3 [31,4] |
| | 120 | [5 5 82 48 48] (5) | BAC_373-C17 | |
| | 24 | [49 49 49 49 49] (49) | EST6D10 | 14q21.1 [33,5] |
| | 24 | [47 47 47 47 47] (47) | EST4D10/PEZ11 | 14q21.1 [33,6] |
| | 98 | [56 56 56 56 56] (56) | FH3218/FH3843 | |
| | 97 | [4 4 4 4 4] (4) | BAC_373-A3 | |
| | 57 | [61 61 61 61 61] (61) | FH3425*** | |
| | 58 | [35 35 35 35 35] (35) | EST14D9 | 14q21.2 [39,4] |
| | 97 | [13 13 13 13 13] (13) | BAC_380-D2 | |
| | 98 | [12 12 12 12 12] (12) | BAC_376-O21 | |
| | 42 | [63 63 63 63 63] (63) | FH4003 | |
| | 24 | [40 40 42 40 42] (40) | EST20F10 | 14q22.1 [44,9] |
| | 58 | [42 42 40 42 40] (42) | EST22E10 | 14q21.3 [44,1] |
| | 42 | [37 37 37 37 37] (37) | EST17C3 | 14q22.1 [46,6] |
| | 72 | [89 89 89 66 66] (89) | UOR4101 | |
| | 85 | [66 66 66 89 89] (66) | LEI034 | |
| | 86 | [20 20 20 20 20] (20) | BMP4 | 14q22.2 [48,2] |
| | 131 | [67 67 67 67 67] (67) | LGALS3 | 14q22.3 [49,4] |
| | 72 | [22 22 22 22 32] (22) | C08.410*** | |
| | 42 | [32 32 32 32 22] (32) | EST11F6 | 14q22.3 [49,9] |
| | 42 | [9 9 9 9 9] (9) | BAC_374-O17 | |
| | 120 | [38 38 38 38 38] (38) | EST1C10/FH3121/FH3077 | 14q22.3 [51,7] |
| | 58 | [62 62 62 62 62] (62) | FH3653 | |
| | 58 | [83 83 83 83 83] (83) | REN68M10 | |
| | 56 | [39 39 39 39 39] (39) | EST20A5-B | 14q23.3 [58,8] |
| | 57 | [84 84 84 84 84] (84) | REN95G20 | |
| | 84 | [44 44 44 44 44] (44) | EST23F7 | 14q23.3 [59,9] |
| | 57 | [50 50 50 50 50] (50) | EST12C10/FH2144 | 14q24.1 [61,9] |
| | 41 | [21 78 78 78 78] (78) | REN206K11 | |
| | 84 | [78 21 21 21 21] (21) | C08.373 | |
| | 71 | [60 60 60 59 60] (60) | FH3330 | |
| | 23 | [59 59 71 71 71] (71) | REN105N22 | |
| | 57 | [71 71 59 60 59] (59) | FH3316*** | |
| | 24 | [18 18 18 80 18] (18) | BAC_382-G3 | |
| | 42 | [80 80 80 18 80] (80) | REN268I01 | |
| | 129 | [6 6 6 6 6] (6) | BAC_373-E9 | |
| | 42 | [81 81 81 81 45] (81) | REN288F11 | |
| | 24 | [30 30 30 30 46] (30) | EST10D4 | 14q24.3 [69,4] |
| | 57 | [46 46 46 46 30] (46) | EST27E3 | 14q24.3 [69,4] |
| | 57 | [45 45 45 45 81] (45) | EST27B2 | 14q24.3 [71,3] |
| | 58 | [85 85 85 85 85] (85) | REN99G13 | |
| | 42 | [31 31 31 31 31] (31) | EST11E8 | 14q24.3 [71,8] |
| | 123 | [72 72 72 72 72] (72) | REN108A18 | |
| | 125 | [88 88 88 88 88] (88) | TSHR | 14q31.1 [75,3] |
| | 42 | [75 75 75 75 75] (75) | REN178J05*** | |
| | 86 | [8 8 8 8 8] (8) | BAC_374-O13 | |
| | 86 | [58 58 58 58 58] (58) | FH3266 | |
| | 58 | [19 19 19 19 19] (19) | BAC_385-J17 | |
| | 97 | [14 14 14 14 14] (14) | BAC_381-G22 | |
| | 57 | [3 3 3 3 3] (3) | BAC_372-M6 | |
| | 24 | [11 11 11 11 11] (11) | BAC_376-D9 | |

| Size | Scale |
|--------|-------------|
| 86 Mb | 1 Mb = 74 U |
| 6399 U | 1 U = 13 Kb |

