

Charles County Division of Parks & Recreation

GUIDE

WINTER 2009

WWW.CHARLESCOUNTY.ORG

A Seasonal Parks & Recreation Program Listing

Get fit in 2009!

Check inside for fitness programs available this season!

New!
jazzercise®

At our new Port Tobacco Recreation Center • p.26

Don't forget to check out our other great programs!

Start Smart Sports for Toddlers! • p.23

Middle School Basketball League • p.30

Indian Head Rail Trail for Hiking & Biking • p.9

Look for the next edition of **The Guide** in March 2009



Charles County Commissioners

Wayne Cooper, President

Edith J. Patterson, Ed.D., Vice President (Dist. 2)

Reuben B. Collins, II (Dist. 3)

Samuel N. Graves, Jr. (Dist. 1)

Gary V. Hodge (Dist. 4)



Equal Opportunity County • Say No To Drugs

Charles County Government

Mission Statement – The mission of Charles County Government is to provide our citizens the highest quality service possible in a timely, efficient, and courteous manner. To achieve this goal, our government must be operated in an open and accessible atmosphere, be based on comprehensive long- and short-term planning, and have an appropriate managerial organization tempered by fiscal responsibility.

Vision Statement – Charles County is a place where: private initiative is rewarded and businesses grow and prosper, while the preservation of our heritage is paramount; government services have reached the highest level of excellence; the quality of life is felt by its citizens to be the best in the region; and its government is recognized as a leader in support of these expectations.

Americans With Disabilities – The Division of Parks & Recreation welcomes the participation of individuals with disabilities. As with all county government, we comply fully with the *Americans With Disabilities Act* in making reasonable accommodations to encourage involvement. If you require special assistance and would like to participate in our programs, please call 301-934-3441.

Maryland Relay Service: 711 • Relay TDD: 1-800-735-2258 – Efforts will be made to accommodate the disabled and non-English speaking residents with advance notice to 301-934-3441.

Charles County Division of Parks & Recreation

GUIDE

WINTER 2009

The Charles County Commissioners proudly announce the re-formation of a Division of Parks and Recreation. Effective November 8, 2008, all County leisure services will be managed under the sole direction of the Department of Public Facilities.

During the early 90's as part of a governmental reorganization, a decision was made to separate these two services. Recreation became part of the Department of Community Services and park operations merged with the Department of Public Facilities. Since that time, both services have been quite successful and have expanded considerably. With this operational growth and the increasing demand for additional programs and facilities, it has become obvious that the community would be much better served by re-combining these functions into one office. This merger will allow for cost effective and more efficient use of County resources. Equally important, this move eliminates the public's confusion of having such similar and traditionally combined services in two separate departments.

Recreation is important to Charles County. It contributes to the physical, social, and economic health of our community. The new Parks and Recreation Division will be dedicated to providing quality activities and recreational opportunities for all of our residents to enjoy.

The 2009 Parks and Recreation Winter Guide represents our continued commitment to provide quality recreation opportunities throughout the County. We invite residents to check out our wide variety of fun, interactive, and healthy programs. We offer something for everyone!

Sincerely,

Paul W. Comfort, Esq.
County Administrator



CHARLES COUNTY MARYLAND
Where Eagles Fly™

Visit us at www.CHARLESCOUNTY.org

What's Inside...

Who to Call4
 Community Centers, Parks, and More6-7
 Program Registration 38-39

Charles County Parks

White Plains Golf Course8
 Gilbert Run & Maxwell Hall Featured Parks9
 Playgrounds10
 White Plains Skate Park.....10
 Boat Launch Facilities11
 Dog Parks11

Aquatics & Swimming

Aquatics Programs & Swim Lessons12-15

Capital Clubhouse

Classes & Programs16-17

Elite Gymnastics & Recreation Center

Classes & Programs18-19

Trips & Tours

General Trips..... 20
 Senior Trips 20
 Fly Away Trips.....21

School-Based Recreation Center Classes & Programs

Afterschool Activities 22
 Tots & Young Children 23
 Dance 25
 Fitness Classes 26
 Seminars & Workshops.....27
 Special Events27

Sports Programs

Classes 28
 Special Events & Contests 28
 Drop-In Programs..... 29

Sports Leagues

Volleyball League 29
 Outdoor Sports Leagues 30
 Youth Basketball Leagues 30

Nanjemoy Community Center

Programs, Classes & Special Events 32-36

Special Olympics & Special Populations

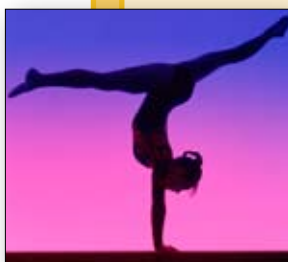
Classes, Programs, Special Events37

Don't Forget...



Swimming with Santa

p.13



Snowflake Invitational Gymnastics Meet

p.19



2009 Elks Hoop Shoot National Free Throw Contest

p.29

More Great Events...

Learn to Play Golf..... p.9

National Skating Month p.17

Philadelphia Flower Show Trip.... p.20

Shop • Crop • Scrap • Stampp.25

JumpBunch for Kidsp.32

Online registration is unavailable at this time. We apologize for any inconvenience.

Who to Call...

For a complete listing of parks, centers, and other facility locations, including phone numbers, locations, and hours of operation, please see pages 6-7.

Division of Parks & Recreation

— Parks —

1001 Radio Station Road
La Plata, Maryland 20646

301-932-3470 • 301-870-2778
Fax: 301-932-3590

General Park Information 301-932-3470
Indoor Sports Programs 301-934-9305, x5152
Outdoor Sports Programs 301-932-3470

— Recreation —

8190 Port Tobacco Road
Port Tobacco, Maryland 20677

To reach the offices listed below, dial one of the main numbers shown, and then dial the extension number when prompted:

301-934-9305 • 301-870-3388
Fax: 301-934-5624

Program/Class Registration

Discount tickets, sports, general information, etc. ... x5152

Special Populations

Programming & Special Olympics x5146

Job Hotline

Call for available positions listing x5210

Inclement Weather for Closings/Cancellations

Community Centers, Senior Centers, and Recreation Activities x5197

For publications available online, please visit
www.charlescounty.org

Department of Community Services

Aging Services, Senior Centers,
Housing & Community Development, Transportation,
Nanjemoy Community Center, and Child Care

Main Office

8190 Port Tobacco Road
Port Tobacco, Maryland 20677

301-934-9305 • 301-870-3388
Fax: 301-934-5624

General E-mail: webmail@charlescounty.org

Look what's in store for
you in our next Guide
available March 18!

Amusement Park Discount Tickets

Summer Swim Programs

Special Olympics Spring Games

Senior Citizens Trips... See The Producers at
the Allenberry Resort in June

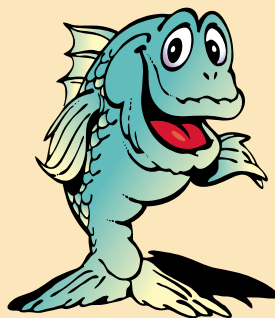
and more...



SPRING FISHIN' BUDDIES DERBY

Mark your calendar and join the fun!

Gilbert Run Park's annual Spring Fishin' Buddies
Derby will be held Saturday, May 2.



This youth and adult team
tournament has long been a
Southern Maryland favorite.
Compete in either a boater
or bank category at our 60
acre freshwater lake.
Call 301-932-3470 for
registration information.

Save the Date!

Registration for our Summer Camp
Programs will begin March 18.

For general information on available
camps, please call 301-934-9305,
ext. 5152, 5159 or 5132.



The date to get your camp packet
will be announced in the next issue of
the Guide. Reminder: Registration for all
camps is on a first-come, first-served basis.
A waiting list will be maintained after each
session has filled.

Part-Time Employment Opportunities

Recreation

To request an application, please call 301-934-0132, Monday-Friday, 8:00am-4:00pm.

Positions are seasonal that work June through August. Benefits are not available.

Sports Camp Leaders & Managers

The Parks & Recreation Sports Division is looking for Sports Camp Leaders and Managers for various summer sport day camp programs. Salary starts at: Managers: \$10.11/hr; and Leaders: \$8.16/hr.

Camp Managers, Assistant Managers & Leaders

Must be able to plan and implement summer programs for day camps, gymnastics camps, and sports camps.

Managers

Earn \$10.11 per hour, must be 21 years of age with a college degree and two years camp experience or equivalent combination.

Assistant Managers

Earn \$9.01 per hour, must be 20 years of age with a high school diploma and one year of camp or recreation experience.

Leaders

Salary is \$8.16 per hour, must be 18 years of age and be a high school graduate with one year camp or recreation experience. Additional certifications may be required for aquatics camp staff.

Camp Co-Op Leaders

Work with students with a wide range of mental and physical disabilities. Salary starts at \$8.16 per hour. Must be a high school graduate with one year experience working or volunteering with special populations programs preferred.

Seasonal Pool Managers & Assistant Managers

Pool staff are responsible for the daily operations of an outdoor swimming pool.

Pool Managers

Salary starts at \$9.01 per hour. Must have two years prior pool experience, current pool operators license, Red Cross certification in CPR/First Aid, and lifeguard training. Must be at least 18 years old.

Assistant Managers

Salary starts at \$8 per hour. Must have two years prior pool experience, current pool operators license, Red Cross certification in CPR/First Aid, and lifeguard training. Must be at least 18 years old.

Lifeguards & Lifeguard-Operators

Staff are responsible for the supervision of patrons at swimming pools.

Lifeguards

Salary starts at \$7.02 per hour. Must have Red Cross certification in CPR/First Aid, and lifeguard training. Must be at least 15 years old.

Lifeguard-Operators

Salary starts at \$7.27 per hour. and must have current pool operators license in addition to Red Cross certification in CPR/First Aid, and lifeguard training. Must be at least 15 years old.

Water Safety Instructors (WSI)

Teach swim lessons with salary starting at \$11.04 per hour. Instructors must be Red Cross certified in water safety instruction. Must be at least 16 years old.

Parks

To request an application, please call 301-932-3470, Monday-Friday, 8:00am-4:00pm.

The following are seasonal positions that work April through October. Benefits are not available.

Gilbert Run Park

Must be age 18 or older, or a high school senior:

Assistant Managers • \$9.31/hr
Park Attendants • \$7.69-\$8.46/hr

Sports Complexes

Must be age 18 or older, or a high school senior:

Park Attendants • \$8.46-\$9.31/hr
Sports/Game Attendants • \$7.69/hr

White Plains Golf Course

Snack Bar, Starters, & Cart Attendants: Hourly wage plus golf privileges.

Various Parks

Youth Helper • \$6.61/hr
Concession Workers • \$6.61/hr

The following are seasonal positions that work April through October, Monday-Friday, 7:00am-3:30pm. Benefits are not available.

Various Parks/La Plata Shop

Grounds Keepers • \$10.85/hr

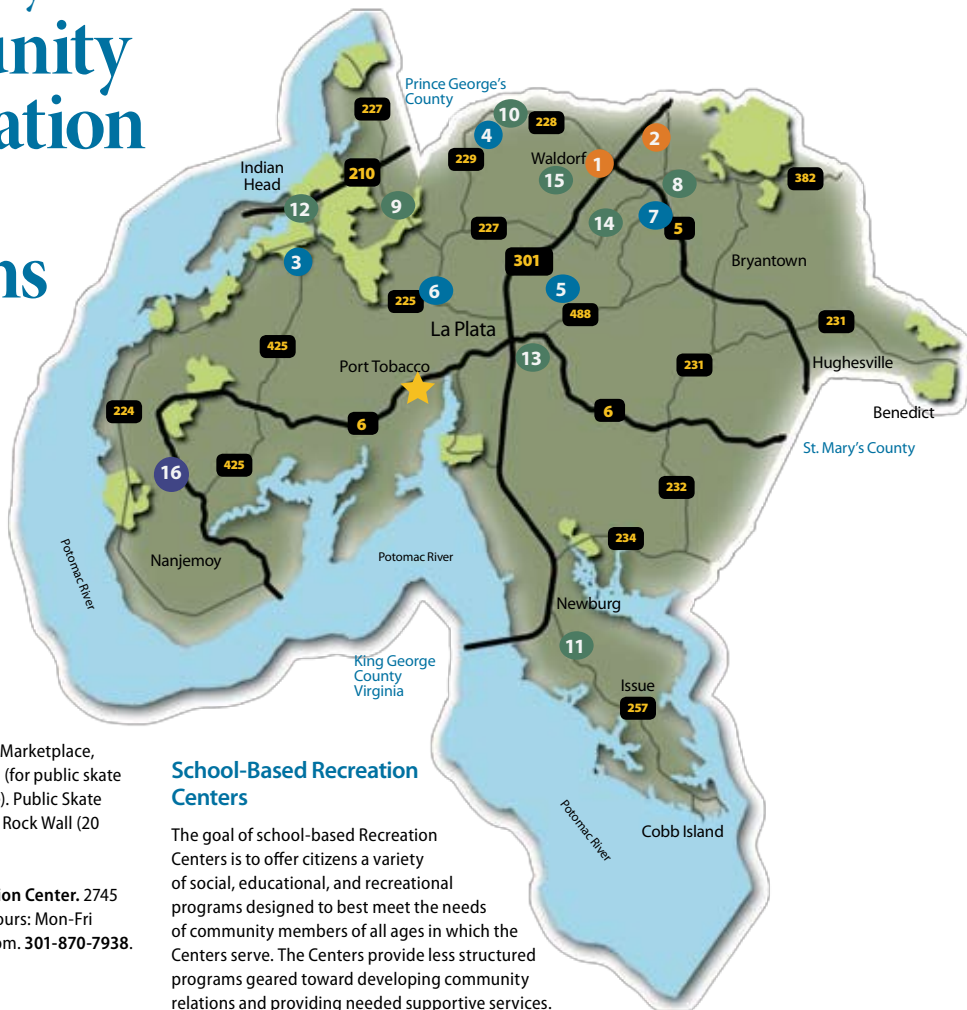
Download an application at:

www.charlescounty.org/hr/employment



*Equal Opportunity County
Say No To Drugs*

Charles County Community & Recreation Center Locations



Recreation Centers

- 1 Capital Clubhouse.** Waldorf Marketplace, Waldorf. Hours: 10:00am-10:00pm (for public skate times, please call or check website). Public Skate Session (2 hrs) \$6; Skate Rental \$2; Rock Wall (20 min) \$5. 301-932-4348.
- 2 Elite Gymnastics & Recreation Center.** 2745 Old Washington Road, Waldorf. Hours: Mon-Fri 8:00am-9:00pm; Sat 9:00am-1:30pm. 301-870-7938.

Pools

Recreational swimming, water aerobics, swim lessons, water safety courses, lap swimming, birthday parties, and private rentals are available year-round. Pools are open to the public for recreational swimming with daily admission or memberships available.

Indoor/Year Round

- 3 Lackey Indoor Pool.** 3000 Chicamuxen Road, Indian Head. For pool hours, please see page 12. 301-743-2470 • 301-753-6003.
- 4 North Point Indoor Pool.** 2500 Davis Road, Waldorf. For pool hours, please see page 12. 301-934-7475.

Outdoor/Summer

Outdoor Pools are currently closed. Check our Spring Guide for our next opening.

- 5 La Plata Outdoor Pool.** 6035 Radio Station Road, La Plata.
- 6 McDonough Outdoor Pool.** 7165 Marshall Corner Road, Pomfret.
- 7 Thomas Stone Outdoor Pool.** 3785 Leonardtown Road, Waldorf.

School-Based Recreation Centers

The goal of school-based Recreation Centers is to offer citizens a variety of social, educational, and recreational programs designed to best meet the needs of community members of all ages in which the Centers serve. The Centers provide less structured programs geared toward developing community relations and providing needed supportive services.

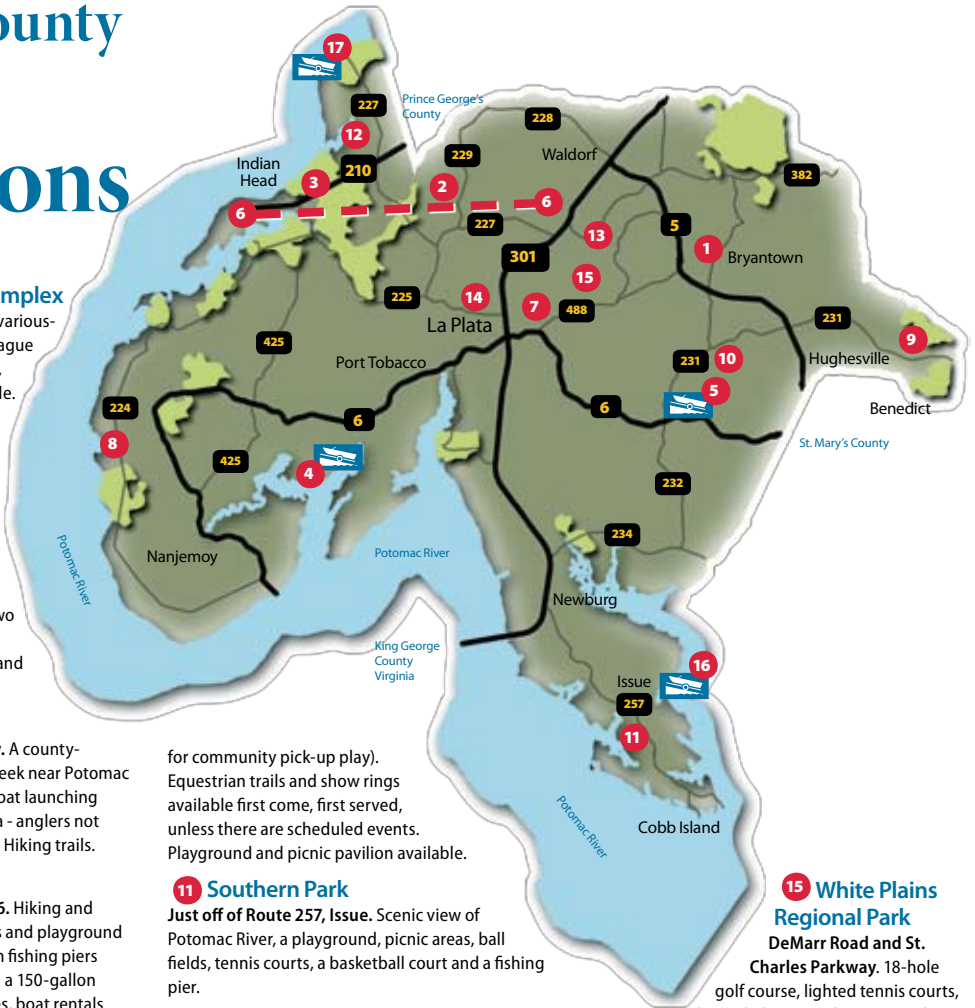
- 8 Hanson Community Center.** 12350 Vivian Adams Drive, Waldorf. Hours: Mon-Fri 3:00-9:30pm, Sat 10:00am-2:00pm. 301-645-2186.
- 9 Henson Community Center.** 3535 Livingston Road, Indian Head. Hours: Mon-Fri 3:00-9:30pm, Sat 10:00am-2:00pm. 301-375-7875.
- 10 Mattawoman Community Center.** 10145 Berry Road, Waldorf. Hours: Mon-Fri 2:30-9:30pm, Sat 10:00am-2:00pm. 301-645-6865.
- 11 Piccowaxen Community Center.** 12834 Rock Point Road, Newburg. Hours: Mon-Fri 2:00-9:00pm, Sat 10:00am-2:00pm. 301-259-2503.
- 12 Smallwood Community Center.** 4990 Indian Head Hwy, Indian Head. Hours: Mon-Fri 3:00-9:30pm, Sat 10:00am-2:00pm. 301-743-3020.
- 13 Somers Community Center.** 300 Willow Lane, La Plata. Hours: Mon-Fri 2:30-9:30pm, Sat 10:00am-2:00pm. 301-932-6679.
- 14 Stoddert Community Center.** 2040 St. Thomas Drive, Waldorf. Hours: Mon-Fri 3:00-9:30pm, Sat 10:00am-2:00pm. 301-645-4847.
- 15 Wade Community Center.** 2300 Smallwood Drive, Waldorf. Hours: Mon-Fri 3:00-9:30pm, Sat 10:00am-2:00pm. 301-645-9291.
- 16 Nanjemoy Community Center.** 4375 Port Tobacco Road, Nanjemoy. Hours: Mon-Wed, Fri 8:00am-9:00pm; Thu 8:00-5:00pm. 301-246-9612.



Department of Community Services

8190 Port Tobacco Road, Port Tobacco. Registrations for programs offered throughout this Guide are currently being accepted at the Parks & Recreation Office located at the Department of Community Services building at the above address. 301-934-9305, 301-870-3388.

Charles County Park Locations



1 Bryantown Sports Complex

Bryantown Road, Bryantown. 15 various-sized soccer fields for permitted league and tournament play. Concessions, restrooms and picnic areas available.

2 Bensville Park

Bensville Road, White Plains. Four soccer, three Little League baseball, one regulation baseball and one football field. Picnic areas and playground.

3 Charlie Wright Park

Dr. Mitchell Lane, Indian Head. Two soccer, two Little League baseball, and one regulation baseball field, and practice football area.

4 Friendship Farm Park

Friendship Farm Road, Nanjemoy. A county-owned boat ramp on Nanjemoy Creek near Potomac River. One-acre surrounding this boat launching facility designated free fishing area - anglers not required to possess fishing license. Hiking trails.

5 Gilbert Run Park

8 miles east of La Plata on Route 6. Hiking and nature trails, picnic areas, pavilions and playground areas. 60-acre fresh water lake with fishing piers and boat ramp. Nature Center with a 150-gallon aquarium. Fishing supplies, licenses, boat rentals and concessions are available. 301-932-1083.

6 Indian Head/White Plains Rail Trail

Phase I is now open for public use. Bikers, hikers, and exercise enthusiasts can now enjoy two paved segments. Three miles in Indian Head, four miles in White Plains. By December 2009 thirteen miles of trail will connect these two communities.

7 Laurel Springs Regional Park

Radio Station Road, La Plata. Exercise trail, playground, picnic pavilions and informal picnic areas. Two regulation baseball, five softball, three little league, one football, six soccer fields and one multi-purpose field. Athletic fields available for official league use by permit only.

8 Mallows Bay Park

Route 224, Riverside. Undeveloped at this time with opening planned in near future. Small boat launch facility with direct access to the Potomac River. Hiking, fishing and wildlife viewing opportunities.

9 Maxwell Hall Park

Teagues Point Road, Benedict. Over ten miles of equestrian and hiking trails (horse use by membership only). Variety of wooded and open field trails. Scenic views of Patuxent River.

10 Oak Ridge Park

Oaks Road, Hughesville. Athletic fields for official league use by permit only. Little league and regulation baseball fields (a field is available

for community pick-up play). Equestrian trails and show rings available first come, first served, unless there are scheduled events. Playground and picnic pavilion available.

11 Southern Park

Just off of Route 257, Issue. Scenic view of Potomac River, a playground, picnic areas, ball fields, tennis courts, a basketball court and a fishing pier.

12 Ruth B. Swann Memorial Park

Route 210, Bryans Road. Regulation baseball field and football field available to organized leagues during playing seasons by permit only. Picnic and playground areas. One-mile foot trail which passes through mature woodland on its way to the shoreline of the Potomac River.

13 Robert D. Stethem Memorial Sports Complex

Piney Church Road, Waldorf. Ten little league and big league baseball fields, one football practice area, playground and picnic pavilion. Athletic fields available for official league use by permit only.

14 Turkey Hill Park

Turkey Hill Road, La Plata. Five soccer and one football field. One-acre, fence-enclosed off-leash dog park. Dogs must display up-to-date vaccination tags and license. Half-mile oval roadway for walkers/runners. Picnic pavilions available.

15 White Plains Regional Park

DeMarr Road and St. Charles Parkway. 18-hole golf course, lighted tennis courts, tot lot and playground, picnic pavilions.

One soccer, one softball, one regulation baseball, one Little League baseball, and one football field (for official league use by permit only).

Skate Park

15,000 sq. ft. concrete-based skatepark. Various sized bowls with transitions, street course. Skateboards and in-line skating. Helmet, pads required. Fee. 301-638-5208.

Golf Course

Regionally acclaimed 18-hole public golf course. Well groomed greens and Bermuda grass fairways. For all levels of play. Driving range available. Scheduled tee times recommended. 301-645-1300, 301-843-2947.

Dog Park

One-acre, fence-enclosed area where dogs with owners can run, play and exercise off-leash. Dogs must display up-to-date vaccination tags and license.

Boat Launch Facilities

All County-operated boat ramps are available free of charge.

With the exception of Gilbert Run (seasonal hours), all are open year-round, dawn to dusk.

4 Friendship Farm Park
Nanjemoy Creek, Nanjemoy

5 Gilbert Run Park
Wheatley Lake, Dentsville (Electric Motor Only)

17 Hatton Creek
Wicomico River, Issue

16 Marshall Hall
Potomac River, Bryans Road



4910 St. Charles Parkway • White Plains
Located on DeMarr Rd (off Rt 301) south of Waldorf

301-645-1300 • 301-843-2947
www.charlescounty.org/pf/pg/wpgc

WP

WHITE PLAINS GOLF COURSE

**WINTER RATES
NOW AVAILABLE!**



A public course with the playing conditions of a private club...

From the challenging and fair layouts, to the lush Bermuda grass fairways and manicured greens...

White Plains Golf Course is truly a fine golf experience.

Par 70 – 18 Hole Course • Putting Green–Range
USGA Certified Handicaps & Golf Classes
Professionally Staffed Pro Shop • Snack Bar & Grill
Weekday Specials for Twilight Play
Discount Plans • Annual Memberships
Outings & Tournament Play Available!

April–October: Mon–Fri • 7:00am–Dusk | Sat–Sun • 6:00am–Dusk
Tee times recommended

November–March: Mon–Sun • 8:00am–Dusk

Rated 3 Star by Golf Digest!



Host of the Charles County Open & WMGA
Junior Golf Championship



Learn to Play Golf

White Plains Public Golf Course offers a variety of instructional programs for both beginners and more advanced players. Pick up a new lifetime hobby or hone your current golf skills with our popular PGA Pro, Larry Gray. Throughout the golf season, White Plains will conduct group lessons, clinics, and individual instruction.

For more information, call 301-645-1300

Sign up for a beginner's program and get a free basket of balls!

INDIAN HEAD



RAIL TRAIL

Phase I of the Indian Head Rail Trail is now open for public use. Bikers, hikers, and exercise enthusiasts can now enjoy two paved segments.

Three miles in Indian Head • Two miles in White Plains

By December 2009 thirteen miles of trail will connect these two communities.

Please call 301-932-3470 for more information.

Gilbert Run Park

Located off of Route 6 in Charlotte Hall, Gilbert Run Park has a 60 acre fresh-water lake which provides great opportunities for fishing and boating activities (no gas motors permitted).



The park offers...

- Boat rentals and concessions available seasonally April-September. Boat rentals range from \$3.25-\$8.
- A two mile hiking trail, a large playground area, volleyball, horseshoe pits, and picnic sites.
- Pavilion areas that you can reserve for your next party. There are six sites to choose from, ranging in size (occupancy limits) and price. For descriptions of these areas please visit www.charlescountyparks.com. Have your next event at the park!

Mark Your Calendar!

Reservations for next season will start February 2, 2009. To make reservations or if you have questions, please call the park office at 301-932-1083. Entrance Fee: \$4 (April-September, weekends and holidays).

Maxwell Hall Park

Maxwell Hall Park is not only Charles County's newest equestrian facility, but also welcomes hikers and birders too! The park is located off Route 231 in Hughesville.



The park currently has six main riding trails, ranging in length from 1.3 to 3.5 miles...over 14 miles total! Maxwell Hall Park has two parking areas on different sides of the park – one just for hikers, and another for horse trailers. In order for riders and horses to access the facility you must have a current membership. The membership includes a trailer sticker and gate combination. New memberships will be available starting January 1, 2009. Current members must renew their memberships (a renewal letter will be sent). Annual memberships with trailer stickers and gate lock combinations are available for a fee of \$25. Please contact the Department of Public Facilities at 301-932-3470 or 301-870-2778; or complete and mail in the membership application (available at the Maxwell Hall Park's Information Board).

PLAYGROUNDS!



Enjoy hours of fun at any one of the Charles County public playgrounds. We offer play areas located at many of the public park facilities. The play equipment is contemporary, encourages innovative play, and meets all industry standards for safety compliance. Facilities are designed to accommodate all levels of abilities, including special needs.

Call for Details: 301-932-3470

Laurel Springs Regional Park

5940 Radio Station Road • La Plata

White Plains Regional Park

1015 St. Charles Parkway • White Plains

Gilbert Run Park

13140 Charles Street • Charlotte Hall

Cobb Island Playground

Neale Sound Drive • Cobb Island

Oak Ridge Park

13675 Oaks Road • Hughesville

Robert D. Stethem Park

4250 Piney Church Road • Waldorf

WHITE PLAINS

SkatePark

301-638-5208

A California experience on the East Coast!



Check out this awesome 15,000 sq. ft. concrete skatepark. Open to skateboarders and in-line skaters, this park features various size bowls and a challenging street course.

Open to Age 6 & Older
Helmets & Pads Required

Hours of Operation
Effective January 2-March 15

Friday 3:30pm-Dusk
 Saturday..... 11:00am-Dusk
 *Saturday Special..... 11am-Noon for age 10 and younger
 Sunday..... 11:00am-Dusk
 The facility is closed during rain/wet conditions. Closed on all major holidays.

Fees & Passes

Youth • Age 6-17	Resident	Non-Resident
Per Session Admission	\$3	\$5
Season Pass	\$75	\$110
Adult • Age 18+	Resident	Non-Resident
Per Session Admission	\$4	\$6
Season Pass	\$95	\$130

SEASON PASS is effective beginning April 1 of each year and is valid for 12 full months (pass cannot be prorated).

Equipment Rental

Helmet \$2
 Knee Pads \$2
 Elbow Pads \$2
 Wrist Guards \$1
 Combo/All \$5

Although the park does offer rental helmets and pads, we encourage skaters to provide their own protective equipment.

Facility Rental

The skatepark is available for rentals. This is a great opportunity for birthday parties, clubs, and more. Fee: \$175

Boat Launch Facilities

Friendship Farm Park

Nanjemoy Creek • Nanjemoy

Single-lane boat ramp. Parking for approx. 16 trailers. Facility features good access to the main stem of the Potomac and also to the extensive, immediate protected waters of Nanjemoy Creek. Open year-round, dawn to dusk. No ramp fee. Directions: From La Plata, take Route 6 West. Left on Route 425. Left on Friendship Landing Road. Follow to end.

Hatton Creek

Wicomico River • Issue

Single-lane ramp gives protected small boat access to river. Open year-round, dawn to dusk. No ramp fee. Directions: From La Plata, take Rt. 301 south. Left on Rt. 257 towards Cobb Island. Left on Hatton Creek Road. Follow to end.

Marshall Hall

Potomac River • Bryans Road

Double ramp. Paved trailer parking for 25 boat trailers with available overflow parking. Situated just above Greenway Flats in Mount Vernon area of river. Open year-round, dawn to dusk. No ramp fee. Directions: From I-495 Beltway, take Route 210 (Indian Head Highway) south to Charles County. At first traffic signal in Charles County, make right turn onto Route 227. Follow to end of road.

Gilbert Run Park (electric motor only)

Wheatley Lake • Dentsville

60 acre fresh water lake with fishing, pedal boating, rowboating and canoeing. Bass, bluegill, trout and catfish. Ramp for electric motors only. Fishing supplies, licenses and concessions available. Open March-November with seasonal hours.

No ramp fees at listed facilities.

**For further information,
please call 301-932-3470**

Charles County's Going to the Dog Parks!



Did you know there are **TWO** dog parks in Charles County?

Public off-leash exercise areas, operated and maintained by Charles County Government, help provide safe, legal areas in which dogs can run, play, and socialize.

We invite residents to visit with their dogs to enjoy these unique facilities.

The parks offer two separate fenced areas – A large area designed for general dog play and a smaller area for smaller dogs and puppies (at least 4 mos old). The smaller area is also great for shy dogs not quite ready to socialize in the larger play area.

**For more information, please call
301-932-3470**

White Plains Dog Park

This dog park is located within the White Plains Regional Park which is at the intersection of St. Charles Parkway and DeMarr Road (1015 St. Charles Parkway). Directions: From Waldorf: travel south on U.S. 301 to White Plains, turn left on DeMarr Road. Travel 1.5 miles to stop sign. The park is directly across intersection. Follow the main entrance road to the athletic complex. The off-leash area is just off of the cul-de-sac at the road's end

Turkey Hill Dog Park

Located in Turkey Hill Park, this facility is located just north of La Plata (9430 Turkey Hill Road). Directions: From Waldorf: travel south approximately 5 miles on U.S. 301, turn right on Turkey Hill Road. The park is the first entrance on the right. The dog park is directly on the left once you enter the park. From La Plata, travel North on U.S. 301, approximately 2 miles, turn left on Turkey Hill Road.

Hours of Operation

Seven days a week, 8:00am until dusk (with the exception of Christmas Day and New Year's Day when both parks are closed). Occasionally, the park may be closed during, and after, periods of inclement weather.

Dog Park Brochures

Dog park brochures are available by mail. Send us an e-mail to: dpf@charlescounty.org, and we will send a brochure to your address. Don't forget to include your name and mailing address. Enter **Charles County Dog Parks Request** in the subject line of your e-mail.

AQUATICS PROGRAMS

Locations & Hours

Hours are subject to change without notice.

All patrons will be cleared from the water 15 minutes prior to facility closing.

Lackey

301-743-2470 • 301-753-6003
 Fax: 301-743-9218
 3000 Chicamuxen Rd, Indian Head

Winter Hours: Nov 15-Feb 21

Monday, Wednesday, FridayVaries*
 Tuesday, Thursday 7:00-9:00pm
 Saturday, Sunday Noon-6:00pm

*Monday, Wednesday, and Friday hours vary due to high school swim meets.

Spring Hours: Feb 22-Jun 17

Monday-Friday 3:30pm-9:00pm
 Saturday, Sunday Noon-6:00pm

North Point

301-934-7475 • Fax: 301-934-7474
 2500 Davis Rd, Waldorf

Winter Hours: Nov 15-Feb 21

Monday, Tuesday, Thursday 7:30-9:00pm
 Wednesday, FridayVaries*
 Saturday, Sunday Noon-6:00pm

*Wednesday and Friday hours vary due to high school swim meets.

Spring Hours: Feb 22-Jun 17

Monday-Friday 3:30pm-9:00pm
 Saturday, Sunday Noon-6:00pm

Outdoor Pools

- La Plata High School Pool
6035 Radio Station Rd • La Plata
- McDonough High School Pool
7165 Marshall Corner Rd • Pomfret
- Thomas Stone High School Pool
3785 Leonardtown Rd • Waldorf

Outdoor Pools are now closed. Check our Spring 2009 Guide for our next opening date.

Thunderstorm policy: All patrons will be cleared from all pools after the first sight or sound of an approaching thunderstorm. The pools will remain cleared for a full 30 minutes after the last clap of thunder or sight of lightning.

Daily Admission

Age	Fee
Age 2 & Younger	Free
Age 3-12	\$4
Age 13+	\$5
Age 60+	\$4
Children age 12 and younger must be accompanied by an adult age 18+.	

Group Rates

Any group of 8 or more must make reservations with the Pool Manager at least two weeks prior. Please call the Aquatics Offices for information.

Punch Cards

Purchase a 12 visit punch card that is good at all pool locations. Card expires 6 months from the date of purchase. Card is valid for one person only. Each person must present their own card.

Age	Resident	Non-Resident
Age 3-12	\$30	\$35
Age 13+	\$40	\$45
Seniors Age 60+	\$30	\$35

Pool Memberships

Good at all pools operated by Charles County Government.

Annual Membership

Good 12 months from date of purchase

	Resident	Non-Resident
Family of Four	\$400	\$410
Add'l Family Member	\$50	\$55
Individual Adult	\$250	\$255
Individual Youth/ Senior	\$225	\$230

Semi Annual Membership

Good 6 months from date of purchase

	Resident	Non-Resident
Family of Four	\$300	\$310
Add'l Family Member	\$35	\$40
Individual Adult	\$175	\$180
Individual Youth/ Senior	\$150	\$155

Pool Rentals

The Indoor Community Pools at Lackey and North Point are available year-round, and McDonough Outdoor Pool is available during summer months for private pool rentals. This is a great opportunity for birthday parties, family gatherings, church groups, camps, child care facilities, group parties, and more. The pool rental is for three hours with certified lifeguards provided.

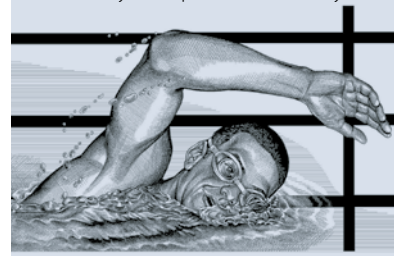
Reservations must be made in person at least two weeks in advance at the Aquatics Offices at either Lackey or North Point. Non-refundable, 50% deposit due at time of reservation.

Number of Guests	Resident	Non-Resident
Fewer than 50	\$200	\$205
50-100	\$250	\$255
100-150	\$300**	\$305**
More than 150 Guests: Contact the Aquatics Office		
**Not available at North Point.		

Rental Days: Sat & Sun • 6:00-9:00pm

Attention Lap Swimmers

Lap lanes are available for lap swimming during MOST of our posted open hours. However, due to limited space, swimmers may need to share the lap lanes. Lap lanes will not be available during our Water Aerobics classes. Please contact Lackey or North Point directly for lap lane availability.



Lifeguard Training

Lifeguard Prep Class

Class will focus on swimming endurance and necessary skills needed to meet prerequisites of upcoming Lifeguard classes.

Age: 15+
Resident Fee: \$15; Non-Resident: \$20

Lackey • 80LK.663

Wed Feb 11 7:00-7:45pm

North Point • 80NP.664

Tue Mar 24 6:00-6:45pm

Lifeguard Class

Designed to provide lifeguards with the knowledge and skills necessary to ensure the safety of patrons at aquatic facilities. Both a written and practical exam will be given at the end of the course and American Red Cross certification cards will be issued to all students that successfully complete all components of the class. Participants are required to attend all classes. **Refunds will not be given to those who do not pass the prerequisite skills or the final written and/or practical exam.**

Prerequisites

- Must be age 15 on or before last day of class (proof of age required).
- Swim 300 yards continuously using 100 yards front crawl, 100 yards breaststroke, 100 yards your choice of either front crawl, breaststroke.
- Breaststroke must be preformed using a pull, breathe, kick, glide sequence.
- Able to retrieve a 10 pound object from 7-10 feet depth, return to the surface, swim 20 yards back to the starting point with object. Must be completed within the required 1:40 time limit.

Age: 15+
Resident Fee: \$165; Non-Resident: \$170

Lackey • 80LK.661

Thu-Fri Feb 26-27 4:00-9:00pm

Sat-Sun Feb 28-Mar 1 8:00am-6:00pm

Lackey • 80LK.662

Mon/Tue/Thu Mar 16-Mar 26 5:00-9:00pm

Sat Mar 28 9:00am-5:00pm

North Point • 80NP.661

Fri Apr 3 5:00-9:00pm

Mon-Thu Apr 6-9 9:00am-4:00pm

WSI Course

Interested in Teaching Swim Lessons?

This course is designed to train instructor candidates with the skills needed to instruct and plan courses in the American Red Cross Swimming and Water Safety program. Participants are required to attend all classes. **Refunds will not be given if participant does not pass the prerequisites or fails to complete the certification requirements.** Must attend all classes.

Prerequisites

- Must be age 16 on or before last day of class
- Must successfully pass pre-course written test and skills

Age: 16+ 80NP.655
Mon/Wed Mar 2 & 4 5:00-9:00pm
M/W/Th Mar 5-19 6:00-9:00pm
Sat Mar 21 Noon-6:00pm
Resident Fee \$185; Non-Resident: \$190
Site: North Point, Waldorf



Aquatics Fitness

Fitness Swimming for Adults

Designed to give adult swimmers an opportunity to participate in organized aquatic workouts. An instructor will be provided on deck to lead the workouts, motivate swimmers, and promote proper stroke techniques. Program is designed for intermediate and advanced swimmers who are comfortable with the water and are able to swim 50 yards of both freestyle and backstroke.

Age: 18+ 80NP.675
Mon & Wed Jan 5-Feb 4 7:45-8:45 pm
Resident Fee: \$50; Non-Resident: \$55
Site: North Point, Waldorf

Water Aerobics

Low-impact with emphasis on stretching, cardiovascular, and resistance exercises. Perform exercises using the natural resistance of water with various pieces of equipment. You don't need to know how to swim, but should be comfortable in water. Class offerings vary by instructor to meet the needs of participants. Day/times vary by month. Participant numbers may be limited due to pool availability. Please call or check our website at www.charlescounty.org for current schedule.

8 visit punch card
Resident Fee: \$30; Non-Resident: \$35
—or— \$5 daily drop-in

Swimming with Santa

Santa Claus will be leaving the North Pole and coming down to Lackey Pool for his annual swim with the kids. There will be games, prizes, and UNDERWATER pictures with Santa. More details to follow.

Sat, Dec 13 • 2:00-4:00pm

Fee: \$4 children; \$5 adults
Receive \$1 off daily admission fee with donation of a non-perishable food item; or a scarf, hat, or gloves.

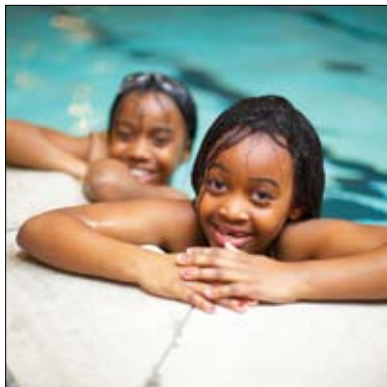


NO SCHOOL POOL DAYS

Looking for a fun way to spend a day with the kids when schools are closed? Visit the indoor community pools at Lackey or North Point for a ton of splashing fun with your family.

Jan 19, Feb 16, & Mar 4

Noon-4:00pm Fee: \$2/person
Site: North Point & Lackey



Swim Lessons

Resident Fee: \$55 • Non-Resident: \$60

Sessions consist of eight, 35-minute classes. Each session includes one day of basic water safety skills. Children should be able to perform all skills of the previous level before moving on to a higher level. For safety reasons, all class sizes are limited to a maximum number of participants. Classes may be canceled due to low enrollment. Instructors may move children to a different level class if the child is unable to participate in the skill level of the registered class. Please contact the Aquatics Supervisor if health conditions warrant additional accommodations for participation. Registration is on a first-come, first-serve basis.



Infant/Toddler • Age 6-36 mos

Requirements: Parent or guardian to accompany child in water. **Skills:** Designed to teach parents the skills and techniques to encourage and develop a comfort level for young children in and around water. Classes include guided instructional teaching, as well as individual parent and child water exploration.

Preschool 1 • Age 3-5

Skills: Designed to orient young children to water safety and provide an introduction to basic swimming skills. Includes submerging, floating, kicking, bobbing, using arms on both stomach and back.

Preschool 2 • Age 3-5

Requirements: Must have successfully completed Preschool 1 skills. Must be able to fully submerge head, and be comfortable with the water. **Skills:** Course works on floating, and introduces combined stroke (arms/legs) on both stomach and back.

Preschool 3 • Age 3-5

Requirements: Must have successfully completed Preschool 2 skills. Must be comfortable with underwater swimming, able to float unsupported, and swim 5 yds on stomach and back by themselves. **Skills:** Continues with combined stroke on stomach and back, introduction of elementary back stroke, deep water skills.

Level 1

Requirements: Designed for non-swimmers. Course is an introduction to water safety and basic swimming skills. Includes submerging, floating, kicking, bobbing, alternate arm action.

Level 2

Requirements: Must have successfully completed Level 1 skills. Must be able to fully submerge head and be comfortable with the water. **Skills:** Course works on floating, and introduces combined stroke (arms/legs) on both stomach and back.

Level 3

Requirements: Must have successfully completed Level 2 skills or Preschool 3. Must be comfortable with underwater swimming, able to float, and swim 15 yds on stomach and back. **Skills:** Class builds on acquired combined stroke on stomach and back. Adds deep water skills, elementary backstroke, and beginner diving.

Level 4

Requirements: Must have successfully completed Level 3 skills. Must be able to swim 25 yds (one length of pool) front crawl, and back crawl. **Skills:** Refine technique of previous skills. Front and back crawl, elementary backstroke, breaststroke and sidestroke emphasized. Also improves diving from standing position.

Level 5

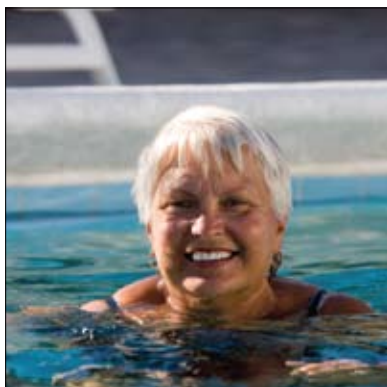
Requirements: Must have successfully completed Level 4 skills. Must be able to swim 50 yds (2 pool lengths) of front and back crawl. Must be able to correctly demonstrate elementary backstroke, breaststroke, and sidestroke. **Skills:** Class builds on skills from previous levels and refines strokes of front crawl, backstroke, breaststroke, sidestroke, and diving. Also learn basic butterfly stroke.

Adult Beginner • Age 16+

Requirements: For non-swimmers. **Skills:** Gain confidence in and around water. Focus on submerging, floating, kicking, bobbing, and alternate arm action, and putting it together with combined stroke.

Adult Advanced • Age 16+

Requirements: Must be able to fully submerge head, float, and be comfortable in water. **Skills:** Course teaches combined stroke (arms/legs) on both stomach and back. Class builds on acquired skills and adds deep water skills, elementary backstroke kick, and treading water.





Winter & Spring 2009 Swim Lesson Schedule

North Point

Session 1 (8 weeks)

Sun • Jan 11-Mar 1

- Level 4/5.....2:20...80NP.510
- Preschool 2.....2:20...80NP.511
- Preschool 1.....3:00...80NP.512
- Level 2.....3:00...80NP.513
- Level 3.....3:45...80NP.514
- Preschool 2.....3:45...80NP.515
- Infant/Toddler...4:30...80NP.516
- Preschool 1.....4:30...80NP.517
- Preschool 1.....5:15...80NP.518
- Level 3.....5:15...80NP.519
- Level 1.....6:00...80NP.520
- Level 2.....6:00...80NP.521
- Preschool 2.....6:00...80NP.522
- Preschool 3.....6:45...80NP.523
- Level 1.....6:45...80NP.524
- Adult Beginner...6:45...80NP.525

Session 2 (4 weeks)

Wed/Fri • Jan 28-Feb 25

No class Feb 4

- Preschool 1.....6:30...80NP.530
- Level 1.....6:30...80NP.531
- Preschool 2.....7:15...80NP.532
- Level 3.....7:15...80NP.533
- Adult Beg.....8:00...80NP.534
- Adult Adv.....8:00...80NP.535

Session 3 (4 weeks)

Mon/Wed • Mar 9-Apr 1

- Preschool 2.....6:30...80NP.540
- Level 2.....6:30...80NP.541
- Preschool 1.....7:15...80NP.542
- Level 1.....7:15...80NP.543
- Adult Beginner...8:00...80NP.544
- Level 4/5.....8:00...80NP.545

Lackey

Session 1 (4 weeks)

Tue/Thu • Jan 6-29

- Preschool 1.....7:15...80LK.510
- Level 1.....7:15...80LK.511
- Adult Beginner...8:00...80LK.512
- Level 3.....8:00...80LK.513

Session 2 (4 weeks)

Tue/Thu • Feb 17-Mar 12

- Preschool 2.....6:00...80LK.520
- Level 1.....6:00...80LK.521
- Level 2.....6:45...80LK.522
- Preschool 1.....6:45...80LK.523
- Level 3.....7:30...80LK.524
- Level 4/5.....7:30...80LK.525
- Adult Beginner...8:15...80LK.526

Use the listings and class descriptions shown to determine your registration requirements. The correct suffix is needed to determine the class level and time of the lesson.

School/Pool Codes (circle the proper code on the registration form)

80LK = Lackey

80NP = North Point

Swim Lesson Registration

Please Print • One Form Per Participant • Make checks payable to Charles County Commissioners

This section must be completed—If participant is a minor, this section should list parent or guardian information.

Name		Phone #'s:	Home	Work	Cell
Mailing Address			City	State	Zip
COUNTY:	Emergency Contact Name			Emergency Contact Phone	

Participant/Child's Information			Age	Date of Birth	
First Name	Last Name		Sex (circle)	Male	Female
Special Health Conditions			School Currently Attending		

Registration Information							
1. Lesson Title	Session Code	Site (circle)	LK	NP			
Session Dates	Time	Resident Fee: \$55; Non-Resident: \$60					
2. Lesson Title	Session Code	Site (circle)	LK	NP			
Session Dates	Time	Resident Fee: \$55; Non-Resident: \$60					
3. Lesson Title	Session Code	Site (circle)	LK	NP			
Session Dates	Time	Resident Fee: \$55; Non-Resident: \$60					

Your signature acknowledges that you have read and understand the paragraph listed below.

Signature _____ Date _____

**Make checks payable to:
Charles County Commissioners**

No confirmations will be sent. You may assume you are registered unless otherwise contacted. Charles County Government is not responsible for program cancellations due to Charles County Public Schools programming. I agree to participate or to allow my child to participate in these programs knowing that safety precautions will be taken but realizing that the Charles County Government does not have accident insurance for participants. I do hereby release and hold harmless Charles County, Maryland, its officials, employees, instructors, and volunteers from any and all liabilities arising from any injuries that might occur during the supervised programs. I also authorize the Division of Parks & Recreation to take photographs of me/my child for promotional and/or educational purposes. I hereby state and declare that this information is freely, willingly, and voluntarily made.

OFFICE USE ONLY	Cash	Check	M/O	M/C	Visa	Staff Initials	Reg #	W/I	M	PH	FX
Check/Card Name	Total		\$	Date Entered		HA	HE	MA	NCC	PI	SM
Check/Card #				Card Exp.		SO	ST	WA	DCS	LK	NP



**Training Rooms • Group Events • Field Trips
Special Needs Programs • Organization Fund Raisers**

Check online at www.capitalclubhouse.com

Call for Details • 301-932-4348

301.932.4348 • Fax: 301.632.5880 • www.capitalclubhouse.com

10:00am–10:00pm (for public skate times, please call or check website)

Public Skate Session (2 hrs) \$7 • Skate Rental \$3 • Rock Wall (20 min) \$5

Registrations for Capital Clubhouse programs are accepted only at the Capital Clubhouse.

Public Ice Skating

Daily Skating Sessions

Please call for additional days and times. Schedule subject to change without notice.

Age: All Every Day Ongoing

Noon-2:00pm & 2:15-4:15pm

Admission: \$7/skater • Skate Rental: \$3/skater

Rock-N-Skate

LIVE DJ every Friday night! Music, games, door prizes! No discount, passes, or coupons.

Age: All

Each Fri Ongoing 8:30-10:30pm

Admission: \$12/skater

Home School Fridays

Open to home-schooled students. Schedule subject to change without notice.

Age: All

Each Fri Noon-2:00pm (except holidays)

Admission: \$7 (includes skates)

Skate with Santa!

St. Nick stops off on his way up to the North Pole for a twirl around the ice rink.



Age: All

Sun, Dec 7 2:15pm

Admission: \$7 • Skate Rental: \$3

Learn to Skate Programs

Totsicles

A half-hour, self-paced orientation to movement on ice for kids with an adult caregiver, followed by a cup of hot cocoa and a story read aloud in our warm lobby. Children may wear skates or shoes for snow and ice (no smooth-sole or open-toe shoes). Adults wear shoes for snow and ice.

Age: 2-5 w/adult caregiver

Each Fri Ongoing 10:30-11:30am

Resident Fee: \$7/visit; Non-Resident: \$8/visit

Theatre on Ice

Have a blast practicing and then performing in a holiday show on ice! Three-week intensive class prepares skaters for performance of *The Nutcracker* on Ice. Program includes on-ice practices as well as off-ice craft/prop construction. Prerequisite: completion of at least one six-week Skating Academy session or summer camp.

Age: 4+

Sun Nov 30, Dec 7, 14 4:30-7:15pm

and Mon Dec 1, 8, 15 6:15-7:15pm

Registration Deadline: Nov 25

Resident Fee: \$125; Non-Resident: \$140

Please add \$15 if registering after the deadline.

Performance

Wed Dec 17 7:00pm

Free Admission

Adult Skate Hour

A half-hour, self-paced group skating lesson in a relaxed environment from one of our professional instructors, along with a half-hour of practice and fun time with your friends. No experience necessary. Min 5 registered required to hold program. 4 week sessions.



Age: 18+ Each Mon 10:00-11:00am

Sessions: Dec 1-22, Jan 5-19, Feb 2-23, Mar 2-23

Registration Deadline: One week prior

Resident Fee: \$40/session; Non-Resident: \$45

Please add \$15 if registering after the deadline.

Easy Gliders

A half-hour, self-paced skating lesson from one of our professional instructors. Ideal for those who aren't quite ready for our Skating Academy classes. Includes rental skates if needed plus a half-hour of practice time. (Min 5 registered participants required to hold program). 4 week sessions.

Age: 3-5 w/adult caregiver

Each Mon 10:00-11:00am

Sessions: Dec 1-22, Jan 5-19, Feb 2-23, Mar 2-23

Registration Deadline: One week prior

Resident Fee: \$40; Non-Resident: \$45

Please add \$15 if registering after the deadline

Skating Academy

Learn to Skate

Beginner through advanced group lessons. Each six-week session includes: one 30 minute lesson/week; free rental skates during lesson; practice card good for 6 public skating admissions; Official Basic Skills membership card & record book w/stickers; Official Basic Skills member patch & year patch. Prerequisite: Attendance at pre-class skate fitting (new students only) or passing evaluation of previous Basic Class Level. See deadlines below.

Class size is limited to eight per instructor for age 4-5 & 12 per instructor for age 6+. **No make up classes.** Not all class levels will be available at all times; skill levels may be combined due to low enrollment. Please check your e-mail to confirm class schedule. Children must be able to walk unassisted with skates on and take the lesson on their own for 30 minutes.

Open to Age 4+

Each Sunday

Session 4: Jan 4-Feb 8; Session 5: Feb 22-Mar 29

4:30-5:00 Basic Class Levels 1-3; Snowplow Sam Levels 1-3

5:00-5:30 Basic Class Levels 1-5; Snowplow Sam Levels 1-3

5:30-6:00 Basic Class Levels 6-8; Freestyle Class Levels 1-3

6:15-7:15 Moves in the Field/Advanced Freestyle

Each Monday

Session 4: Jan 5-Feb 9; Session 5: Feb 23-Mar 30

6:00-6:30 Adult Basic Class Levels; Snowplow Sam Levels 1-3; Basic Class Levels 1-2

6:30-7:00 Adult Basic Class Levels; Snowplow Sam Levels 1-3; Basic Class Levels 1-2

6:30-7:00 Adult Basic Class Levels; Snowplow Sam Levels 1-3; Basic Class Levels 1-2

Registration Deadline:

Session 4: Dec 28; Session 5: Feb 15

Pre-class skate fitting

10:00am-Noon (arrive convenient to you)

Session 4: Jan 3; Session 5: Feb 21

Resident Fee: \$90/skater; Non-Resident: \$105

Add \$15 late fee if registering after the deadline.

Ice Hockey



Little Stars Ice Hockey

Sponsored by Ken Dixon Automotive of Waldorf

Instructional classes for aspiring ice hockey players age 4-8. First two levels focus on improving existing skating skills; second two levels cover beginning stick handling, passing, and shooting. Ken Dixon Automotive generously donates pieces of equipment for each player's initial enrollment at each level (no additional equipment if repeating a level).

Prerequisite For Level 1: completion of at least one six-week Skating Academy Basic Skills class.

Age: 4-8

Sessions: Dec 6-27, Jan 10-31, Feb 7-28, and Mar 14-Apr 4

Registration Deadline: One Week Prior to Start
If registering late, please add \$15 late fee.
Please add \$15 fee for non-resident.

Levels 1 & 2 • Resident: \$50/player

Each Sat 10:30-11:00am

Levels 3 & 4 • Resident: \$75/player

Each Sat 11:00-11:45am

Pick-up Ice Hockey

Informal game time for a variety of age groups. No referees. Full ice hockey equipment required. Proof of age required for adult sessions. Schedule subject to change without notice.

Age: 18+ (with proof of age)

Sun • 8:30-10:00pm Wed • 9:00-10:30pm
Resident Fee: \$11/player; Non-Resident: \$12

Huron Hockey Learn to Play!

It's here! Instructional classes for aspiring ice hockey players age 9-Adult in the great tradition of Huron Hockey Schools. Includes a 15 minute practice each week. Prerequisite: completion of at least one six-week Skating Academy Basic Skills class. Required equipment: helmet, gloves, stick, shin pads, elbow pads.

Age: 9-Adult

Dec 6-27; Jan 10-31; Feb 7-28; Mar 14-Apr 4

Class Sat 10:30-11:00am or 11:15-11:45am

Practice for both classes 11:00-11:15am

Registration Deadline: one week before start

Fee: \$80/player; add \$15 late fee after deadline

Stick-N-Puck

90 minutes of informal stick handling and shooting practice for all ages. No instruction. Full ice hockey equipment is required for youth and is recommended for parents; helmets required for all. Schedule subject to change without notice.

Age: 4+

Each Sat Ongoing 8:45-10:15am
Resident Fee: \$11/player; Non-Resident: \$12

Adult Ice Hockey League

Please call 301-932-4348 for league/schedule information.

NEW! Adult Ice/In-line Hockey League

Recreational hockey with double the fun! Teams will play eight games on the ice and eight games on the sports court with playoffs. For details or schedule, please contact Lori Simpson at lsimpson@capitalclubhouse.com or 301-934-4348.

Open to Age 18 & Older

Sports Court Programs

In-line Hockey

Recreational in-line hockey leagues for youth age 6-17. Season includes: evaluations, 2 practices, 14 games, tournament, awards, and team jersey. All players must present proof of current USA Hockey In-line membership in order to register. For details, please contact Lori Simpson at lsimpson@capitalclubhouse.com or call 301-934-4348.

Age: 6-17

Sun • 4:00-8:00pm Fri • 6:00-8:00pm

Adult Pick-up Soccer

Please call 301-932-4348 for day and time.

Open to Age 18 & Older

National Skating Month Activities

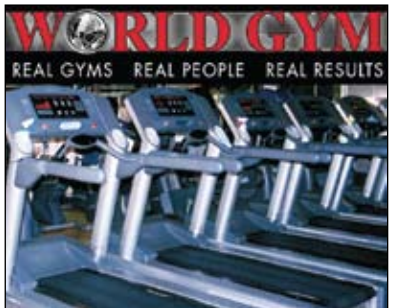
Join the Capital Clubhouse Skating Academy in celebration of U.S. Figure Skating National Skating Month. Introductory lessons, information about figure skating and hockey, goodies to take home, U.S. Figure Skating membership information, parent education, and information sessions. Please call 301-932-4348 for schedule information.

January 1-31

Open to Age 4 & Older



We Didn't Invent The Chicken,
Just The Chicken Sandwich.®



Elite

Gymnastics & Recreation Center

2745 Old Washington Rd, Waldorf MD • 301-870-7938 • 301-705-6557



Gymnastics

High quality gymnastics available for boys and girls age 2-18. Class programs follow USA Gymnastics Jr. Olympic Program. Day and evening classes available. Beginner, intermediate, and advanced classes. Monthly fees w/annual registration.

Competitive Teams

Recreational team follows Mason-Dixon standards. USAG competitive team: levels 4-10.

Gymnastics Programs

\$35 annual registration fee, plus monthly fee. Evening programs available. Program fees shown are for Resident. Please add an additional \$1 for Non-Resident.

Recreational Gymnastics

Program teaches achievable goals, frequent success and tangible rewards. This USAG curriculum uses beginner to advanced level system to track achievements. Skills are broken into achievable steps. Parents see their child's successes through their own star poster and award certificates. Each child has a curriculum and evaluation card with monthly progress reports. Elite nurtures an environment where children have an opportunity to be successful and feel like winners. Call Elite for a free class and your child's personal evaluation.



Boys Tumble/Trampoline

One hour novice/intermediate class. Focus on strength, flexibility, endurance.

Age: 6+ Monthly Fee: \$54

Tumble & Trampoline

High energy tumbling, jumps, and more. Designed for cheerleaders.

Age: 5+ Monthly Fee: \$54

Classes & Programs

Mom's Time Out Drop-In

Enjoy free time while your child is in a safe, fun-filled environment. Children will enjoy arts, gymnastics, crafts, playtime, and more. Program is under the direction of Julie Rayle of Julie Rayle's Dance Studio.

Age: 2½+ (must be potty trained)
Thu 10:00am-2:00pm
Fee: \$8/hr

Taekwondo for Kids

Taekwondo is a unique blend of martial arts and physical fitness training. Watch as we develop your child into a stronger, more capable individual by teaching them how to be more confident, respectful and disciplined all while having fun! **8-week Introductory Course (16 sessions). To register call 301-645-1650.**

Age: 4-6	Tue & Thu	6:00-6:30pm
Age: 7-12	Tue & Thu	6:30-7:15pm
Age: 13+	Tue & Thu	8:00-9:00pm
Fee: \$99		

Dance Lab

African, hip hop, and modern dance. For more information, please call 202-359-2741.

Age: 7-16	Tuition: \$35/mo
Every Sat	10:00-11:00am

Dance Combo Class

Learn the fundamentals of ballet, tap, and jazz dance.

Each Mon	Ongoing	
Age: 3-5	Noon-1:00pm	Fee: \$33/mo
Age: 5-8	1:15-2:15pm	Fee: \$36/mo

Dreams Can Come True

C&N Dance Studio

Learn ballet, tap, hip hop, African techniques, and more. Please call 301-653-4129 for details.

Age: 4-18		
Sat	Ongoing	1:30-3:30pm
Fee: \$60/month		

Gymnastics for Home Schooled Kids

Age: 5-13	Monthly Fee: \$34
Mon	1:30-2:30pm or 2:30-3:30pm

Infants & Toddler Programs

Music, Rhythm & Movement

Learn songs, how to keep a beat, sing in tune, use basic instruments, and more. Develop social skills, focusing and listening skills, coordination, and just have fun. Preregistration required.

Age: Infant-4 yrs	Each Mon & Wed
10:00-10:45am or 11:00-11:45am	
Fee: \$55/8 session (siblings 0-8mo: free)	

Learning through Art for Toddlers

Develop focusing skills, how to follow directions, and the joy of creativity. Preregistration required.

Age: 2-4	Fee: \$55/8 sessions
Each Mon	10:00-10:45am or 11:15am-Noon

KidFIT

Spend quality time with your little one while he or she develops body awareness, balance, fitness, listening, and social skills, and more using gymnastic apparatus and fun activities.

Age: 1-3

Tue/Wed/Thu	10:00-10:45am
Mon/Thu	11:00-11:45am
Monthly Fee: \$34	

Kid Fit Drop-In

Music, obstacle courses, games, and creative play. Parents participate. Program is ongoing.

Age: Infant-4	
Each Mon/Fri	9:30-10:15am or 10:15-11:00am
Fee: \$4/visit	

Super Kids

Class transitions children from KidFit to a full gymnastics curriculum.

Age: 3-5	
Mon	Noon-12:45pm
Tue/Wed	11:00-11:45am -or- 1:00-1:45pm
Monthly Fee: \$43	

Registrations for Elite Gymnastics programs are accepted only at Elite.

Program fees shown are for residents. Please add an additional \$1 for non-resident registrations unless otherwise noted.



Special Event!
Snowflake Invitational Gymnastics Meet


Join us for the United States Association of Gymnastics Jr. Olympic Competition for levels 4-9. Over 20 gymnastic teams from across the state will join this spectacular event.

Hosted by the team booster club Elite Gymnastics Parent Organization, Inc.

Open to All Ages!

Sat & Sun • Jan 24-25
8:00am-5:00pm

Tickets
 Adults \$5
 Age 3-12 \$2
 Free to age 2 & younger



Waldorf Action Martial Arts

Gain energy, flexibility, strength, endurance, be less stressed, and learn forms of self-protection. 4th, 5th and 6th Degree Black Belt Master Instructors. Affordable prices! Family memberships, law enforcement/firefighter/military discounts!

Taekwondo Classes
 Te-Geri Fitness Kickboxing
 Adult Morning Classes
 Karate Birthday Parties
 Transported Afterschool Sport Taekwondo Program

For more information call 301-645-1650 or visit www.wama.cmasdirect.com



The newest competitive cheerleading team in Southern Maryland! Program is designed to help develop cheer skills on a competitive and recreational level. The 1Nation All Star coaches are AACCA safety certified and qualified CAC judges.



To register, or for more information, please visit the Center.

Julie Rayle's
DANCE STUDIO

Classes offered each Tuesday, Thursday & Friday
Open to age 3-18 • Afternoon & evening classes

We offer beginner, intermediate, and advanced classes including Melody Bear, Tiny Tots Combo, Tap, Ballet, Jazz, Hip-Hop, Jammin with Songs, Solo Duets, and Trios.

No registration, insurance or recital fees.

Call **301-259-2615** or visit our website at www.julieraylesdancestudio.com



Trips & Tours

For more information, or to register for the trips and tours shown here, please call 301-934-9305 or 301-870-3388, ext. 5151.

National Aquarium Baltimore, MD

Join us on a winter's day at the National Aquarium. Visit the sharks, Giant Pacific Octopus, and the Atlantic Coral Reef. Included is the dolphin show and 4-D experience. Free time after the aquarium for shopping and lunch on your own at the Inner Harbor.

Sat Jan 31 4019.101
Registration Deadline: Jan 5
Departure: La Plata Courthouse 8:15am, Waldorf Rt. 301 Park and Ride 8:30am
Estimated Return: 4:30pm
Age 19-59: \$63 • Age 60+: \$62
Age 12-18: \$54 • Age 3-11: \$52

United States Air Force Band • Guest Artist Series

DAR Constitution Hall • Washington D.C.
The Air Force Band's popular guest artist series is a time-honored tradition in the nation's capital. Series takes place at the historic 3,700 seat *Daughters of the American Revolution Constitution Hall*. Dinner on your own at Union Station.

Sun Feb 22 4063.101
Registration Deadline: Feb 6
Departure: La Plata Courthouse 12:45pm, Waldorf Rt. 301 Park & Ride 1:00pm
Estimated Return: 7:00pm
Trip Fee: \$38

New York City On Your Own

Spend the day in NYC, shopping, sightseeing, or seeing a play, the choice is yours. The bus will drop you off at Macy's. We will depart for home from Macy's at 5:30pm.

Sat Mar 28 4000.101
Registration Deadline: Mar 9
Departure: La Plata Courthouse 6:00am, Waldorf Rt. 301 Park & Ride 6:15am
Estimated Return: 11:00pm
Trip Fee: \$70

Coming in Spring!

Maryland House & Garden Pilgrimage

Queen Anne's County

Dating back to 1631, Queen Anne's County's historic sites and landmarks are evident in their small towns, historic churches, and courthouses. Visit the beautiful homes and gardens found in this historic county. Lunch is included in the fee. More details to follow in the March 2009 issue of *The Guide*.

Sat Apr 25 4087.201
Registration Deadline: Apr 1
Departure: La Plata Courthouse 8:10am, Waldorf Rt. 301 Park & Ride 8:30am
Est. Return: 6:30pm
Trip Fee: \$90

Senior Trips

Senior Citizens, age 60 and older, are invited to enjoy the following trips planned specifically for them. Registrations for senior trips are accepted at the Parks & Recreation Office located at the Department of Community Services building in Port Tobacco and the Richard R. Clark Senior Center in La Plata.

Divine Performing Arts 2009 World Tour

Kennedy Center • Washington D.C.

Brilliant. Inspiring. Glorious. It's traditional Chinese culture as it was meant to be...a brilliant blend of beauty, energy, and grace!

Dozens of dancers in dazzling costumes move in seamless, flowing patterns. Thunderous drums shake the stage, while spectacular back drops take you to another world. See ancient legends of virtue brought to life alongside modern tales of courage. Hear soaring songs by masterful vocalists that will move and inspire. Experience a sense of beauty and enchantment like no other with this unique, thrilling, and unforgettable show. Free time for shopping and lunch at the Georgetown Mall before the show.

Sat Feb 14 4055.101
Registration Deadline: Jan 13
Departure: Clark Center 9:00am, Waldorf Jaycees 9:30am
Estimated Return: 5:30pm
Trip Fee: \$94

Spirit of Washington Cruise Washington, D.C.

This beautiful cruise ship on the Potomac River is the perfect destination for seniors looking for something fun and different to do. The indoor decks are completely climate-controlled for comfort in any season, and each one is surrounded by huge panoramic windows for spectacular sightseeing. The Spirit also boasts the largest outdoor deck in Washington complete with patio-style seating. The two-hour lunch cruise is the perfect afternoon getaway. A stop will be made after the cruise at the Vietnam Memorial.

Tue Mar 31 4031.101
Registration Deadline: Feb 28
Departure: Clark Center 10:00am, Waldorf Jaycees 10:20am
Estimated Return: 5:00pm
Trip Fee: \$80



Bella Italia

Philadelphia Flower Show

Italy, a country of many passions, will be the inspiration for this year's Philadelphia Flower Show. Take a luxurious stroll through displays that depict the famed flower fields of San Reno, past the sparkling canals of Venice and fashionable runways of Milan. From the exotic paradise of the Italian Riviera and Lake region in the North...to Italy's sunny retreats to the South, the Flower Show will embrace Italy in breathtaking displays. Wear your comfortable shoes to the world's largest indoor flower show covering 33 acres. Your ticket gets you great gardens, floral showcases, and fabulous shopping.

Meals are on your own.

Saturday, March 7

4006.101 • Registration Deadline: Feb 16
Departure: La Plata Courthouse 6:00am, Waldorf Rt. 301 Park & Ride 6:15am
Estimated Return: 8:00pm • Trip Fee: \$82

Fly Away Trips & Tours...

Parks & Recreation and Collette Vacations is pleased to present the following trips. These trips include air transportation from the Washington area. Detailed itineraries, pricing, and registration forms are available by calling 301-934-9305 or 301-870-3388, ext. 5151.

- Registrations may be taken after deadline if space is available.
- Trip fees are "per person."
- Online registration is not available for Fly Away Trips & Tours.
- Air rates are subject to change until final payment is made.
- Registrations taken after the deadline date are subject to availability.
- Air rates are subject to change until final payment is made.

Springtime Tulip River Cruise 9 Days, 20 Meals

Cruise through Holland and Belgium as the expansive fields of springtime flowers burst into color. Relax aboard the luxurious *MS Amadeus Princess* on a seven night cruise. Visit the Keukenhof Gardens with its enormous tulip fields and Kinderdijk, UNESCO World heritage site where nineteen historic spinning windmills have pumped water out for centuries. In celebration of Rembrandt's artistic genius, a stop is made at the Rijksmuseum for a tour of the Dutch master painter's famous collection *The Masterpieces*.

4321.000 May 2-10, 2009
Deposit Deadline: Oct 3
Per Person Trip Fee: Double \$3,584, Single \$3,834

Mackinac Island, MI Featuring The Grand Hotel 10 Days, 14 Meals

Stay for two nights in luxury at The Grand Hotel on Mackinac Island. Enjoy a behind-the-scenes look at the kitchen and see a cooking demonstration. Explore the maritime heritage of Door County and indulge in an authentic fish boil. Visit the Bavarian influenced town of Frankenmuth. Air rates are subject to change until the final payment is made.

4322.000 Aug 7-16, 2009
Deposit Deadline: Apr 7, 2009
Per Person Trip Fee: \$3,269 double, \$4,719 single

Discover Croatia Featuring the Dalmatian Coast, Italy & Slovenia 11 Days, 15 Meals

Discover medieval architecture, tranquil lakes and Croatian charm. Explore Zagreb's Old City and Plitvice National Park, where 16 lakes are connected by cascades and waterfalls. Visit the home of the Lipizzaner horses and the coastal city of Trieste, Italy.

4323.000 Sep 14-24, 2009
Deposit Deadline: Apr 14
Per Person Trip Fee: \$3,959 double, \$4,759 single

Historic Trains of California 10 Days, 14 Meals

Join us riding the rails on four of California's historic trains. From the giant redwoods and the rugged coastline, to the fertile valleys and historic gold rush town, your tour turns back the clock and affords countless awe-aspiring views of California's beautiful and varied landscapes.

4324.000 Oct 18-27, 2009
Deposit Deadline: Jun 18, 2009
Per Person Trip Fee: \$3,039 double, \$3,839 single

Discover Sedona Featuring Scottsdale, Arizona 7 Days, 9 Meals

Explore the rugged landscape and experience the western spirit of Arizona on this seven day adventure. Visit Sunny Scottsdale for two nights...the city that prides itself as "*The West's Most Western Town*." Enjoy two train rides...the Verde Canyon Railroad and the Grand Canyon Railway.

4325.000 Nov 6-12, 2009
Deposit Deadline: Jul 6, 2009
Per Person Trip Fee: \$2,269 double, \$2,869 single

Sedona, Arizona



Passport required for all International trips listed on this page.



Oberammergau, Germany

Imperial Cities & Passion Play Vienna, Budapest, Prague & Oberammergau, Germany! 10 Days, 15 Meals

Great sightseeing, traditional entertainment, and fabulous cultural elements await you on your amazing tour of the Imperial cities of Central Europe. The Passion Play in Oberammergau, Germany, is held every ten years. The original performance dates back to 1634. The town of Oberammergau was spared the Plague, for this reason the town vowed to have a play to honor the life of Christ. The performers are native to the town, the men start growing their beards over a year before the play. The play is in German with an English script. The play sells out quickly, so there is an early deadline for registration. In the event that Collette cancels the tour, you will be refunded 100%.

4315.000 **May 27-Jun 5, 2010**
Final Payment Due: 120 days prior to departure
Per Person Trip Fee: \$5,369 double

First deposit of \$850/person (\$500 deposit + \$350 non-refundable waiver insurance) due as soon as possible, first-come, first-served. Second deposit of \$1,000/person due one year before the trip. Final payment due 120 days prior to departure.

School-Based Recreation Center Programs

The following pages contain recreational classes, programs and special events planned for “kids” of all ages...



Registrations for programs offered throughout this Guide are currently being accepted at the Parks & Recreation office at the Community Services building at 8190 Port Tobacco Road, Port Tobacco.
301-934-9305, 301-870-3388

News Items

Square Dance Club

Come join the Southern Merry-Landers who dance the first, third and fifth Friday of each month at the Hanson Community Center in Waldorf. Lively music, bright lights. So much fun...it doesn't even feel like exercise! For more details, please call Hanson Community Center for details.

Southern Maryland Woodcarvers

Southern Maryland Woodcarvers is a nonprofit organization dedicated to the education and preservation of woodcarving as an art and hobby. The group meets 5:00-9:00pm each Wednesday at Somers Community Center in Room 309. For more information, please call Melvin Williams at 301-934-8063 (Home).

Aviation Club

Participants of all ages meet at Somers Community Center to fly rubber-band powered and remote control model airplanes of various shapes and sizes. Meetings are Thursdays, 6:00-9:00pm, at the Center in the gym. For more information, contact Ross Summers at 301-292-5927 or ross@starpower.net.

FREE Teen Drop-In Programs

Center	Code	Days	Time
Age: 13-17			
Davis	5070.000	Sat	10:00-1:00pm
**Saturday Drop-In at Davis will only be held when Youth Basketball games are not scheduled. Check the Center's schedule for exact dates.			
Hanson	0100.000	Mon-Thu	4:00-6:00pm
Picco	CODE	Mon	4:00-5:30pm
Somers	2700.000	Tue/Thu	4:15-5:45pm
Stoddert	3200.000	Mon/Wed	5:30-7:00pm
Stoddert	3200.000	Thu	8:00-9:15pm
Age: 15-17			
Henson	0800.000	Mon/Wed	4:00-6:00pm
Age: 11-14			
Henson	0800.000	Tue/Thu	4:00-6:00pm
Age: 8-14			
Wade	3700.000	Mon/Fri	3:30-5:45pm

Afterschool Activities Program

Designed for children who will benefit from staying after school with peers and friends. Kids enjoy a snack, homework help, gym time, crafts, and more. Closed on school closing days. Fees are not prorated for short weeks. Min 5/Max 15.

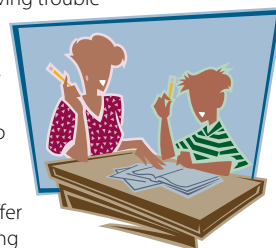
New! Earlier hours are now available on early dismissal dates.

Grades: 6-8 Mon-Fri Ongoing
Registration Deadline: Friday Prior
Resident Fee: \$25/week

School	Code	Time
Somers	2720.000	2:15-6:00pm
Piccowaxen	1807.000	2:15-6:00pm
Mattawoman	1360.000	2:15-6:00pm
Hanson	0190.000	3:15-6:00pm
Henson	0639.000	3:15-6:00pm
Stoddert	3121.000	3:15-6:00pm
Smallwood	2410.000	3:15-6:00pm

Tutoring & Homework Help

If you're having trouble in school and you don't know where to go, come to us. Center staff are proud to offer FREE tutoring and homework help. Min 1/Max 5.



Age: 10-12	3850.000	
Mon	Ongoing	7:00-8:00pm
Age: 13-15	3860.000	
Tue	Ongoing	7:00-8:00pm

Registration Fee: FREE
Site: Wade Community Center, Waldorf

Parent's Night Out

Don't worry about who can watch the kids Friday night...bring them to us! Kids will make a craft, play games, watch a movie, and enjoy a snack. Min 3/Max 10.

Age: 5-12			
0744.001	Fri	Jan 9	6:00-9:00pm
0744.002	Fri	Feb 13	6:00-9:00pm
0744.003	Fri	Mar 13	6:00-9:00pm

Registration Deadline: Two Days Prior
Resident Fee: \$8; Non-Resident: \$9
Site: Henson Community Center, Indian Head

Drop & Shop

Once the holidays have passed, you deserve a break! Go see a movie, do some shopping, or just relax. Bring the kids to us for a fun night of movies, games, crafts, and a pizza dinner. Minimum of five preregistrations required by the Thursday before the program to hold.

Age: 5-12			
3658.001	Fri	Jan 23	5:30-9:00pm
3658.002	Fri	Feb 20	5:30-9:00pm
3658.003	Fri	Mar 20	5:30-9:00pm
3658.004	Fri	Apr 17	5:30-9:00pm

Resident Fee: \$5 in advance; \$10 day of
Non-Resident: \$7 in advance; \$14 day of
Site: Wade Community Center, Waldorf

Program for Tots & Younger Children

Music & Movement

In this basic class your child will explore rhythm and movement with fun and games.

Parents must participate. Fee includes one child and one parent/guardian. Min 5/Max 10. No class Jan 19.

Age: 18 mos-3 yrs

3175.001 Mon Jan 5-Feb 2 5:45-6:30pm

3175.002 Mon Feb 23-Mar 16 5:45-6:30pm

Registration Deadline: One week prior to start

Resident Fee: \$30; Non-Resident: \$32

Site: Stoddert Community Center, Waldorf



Tot Art

Let us worry about the mess! Your preschooler will enjoy all of our hands-on gooeey and messy art projects. Old clothes are a must. Parents are not required to stay. Min 4/Max 10.

Age: 2-5 (must be toilet-trained)

3320.001 Tue Jan 13-27 5:45-6:30pm

3320.003 Tue Mar 10-24 5:45-6:30pm

Registration Deadline: One week prior to start

Resident Fee: \$20; Non-Resident: \$22

Site: Stoddert Community Center, Waldorf

Pre-Tennis

By using balloons, sponge balls, and tennis balls, we will have an informative lesson in tennis skills for the young. You can see if your child has natural skills for this competitive sport. Min 5/Max 15.

Age: 4-7

3210.001 Wed Jan 21 5:45-6:30pm

3210.002 Wed Feb 11 5:45-6:30pm

Registration Deadline: One week prior to start

Resident Fee: \$5; Non-Resident: \$6

Site: Stoddert Community Center, Waldorf

Princess Party!

Parents, bring your princesses over to the Center for mini-manicures, nail painting, games, hot cocoa, and music while making friends. Kids, don't forget to wear your fanciest party dress and bring your favorite doll or stuffed animal for show and tell. Min 5/Max 30.

Age: 3+ 3690.WWA

Fri Feb 27 7:00-9:00pm

Resident Fee: \$3; Non-Resident: \$4

Site: Wade Community Center, Waldorf



General Classes

Basic Dog Obedience Class

Learn correct obedience training techniques with your dog. Dogs must be at least six months of age. A medium link choke collar and 6ft cotton/leather leash is required. Dogs must be current on all vaccinations and be in good health. Children 12 or younger must be accompanied by an adult. First day of class will be an orientation with the dogs. Instructor: Robert Deluca. Min 5/Max 15.

Age: All 0041.WHA

Thu Feb 26-Apr 2 7:00-8:00pm

Registration Deadline: Feb 24

Resident Fee: \$60/dog; Non-Resident: \$65/dog

Site: Hanson Community Center, Waldorf

Let's Get Twisted

Ever wonder how entertainers make those balloon animals and sculptures? A twist here, a twist there, and before you know it you have something mystical and amazing that you created yourself. Min 2/Max 10.

Age: 8-12 0225.001

Sat Mar 21, 28 11:30am-1:00pm

Age: 13+ 0225.002

Wed Mar 18, 25 6:30-8:00pm

Registration Deadline: 3 days before class.

Resident Fee: \$8; Non-Resident Fee: \$10

Site: Hanson Community Center, Waldorf

CPR & First Aid

By learning how to properly administer CPR and first aid, you could save a life. The American Red Cross program prepares people to save lives through health and safety education training. Learn through the use of video-based instruction as well as hands-on exercises. Fee includes handbooks and equipment usage. First aid portions of classes will be combined. Min 4/Max 8.

Age: 13+ 6:30-9:30pm

Resident Fee: \$60 Non-Resident Fee: \$70

Site: Wade Community Center

Adult CPR & Standard First Aid

3506.WWA Tue/Thu Mar 17, 19 6:30-9:30pm

Infant/Child CPR & First Aid

3507.WWA Tue/Thu Mar 24, 26 6:30-9:30pm

Computer

Dare to Deal with Your Digital Photos

Bring your PC laptop and learn to organize all those digital photos using PC/Windows® software. Learn to incorporate pictures into presentations and more. Min 4/Max 8.

Age: 13+ 2539.WSO

Thu Feb 12 7:00-8:00pm

Registration Deadline: Feb 10

Resident Fee: \$10; Non-Resident: \$12

Site: Somers Community Center, La Plata

Start Smart Multi-Sports Development Program

Start Smart is a nationally sanctioned program through the National Alliance of Youth Sports (NAYS). This six week class is a fun introduction to a wide range of sports for children age 3-5. The program includes parents in preparing children for organized youth sports in a fun, non-threatening environment. The program teaches using fun, developmentally age-appropriate equipment to prepare children for traditional sports without the fear of failure. The first night of class is a parents only meeting. The meeting for Saturday class will be held Wednesday, January 7, 6:00pm, at Davis Middle School.

For more information, please call 301-870-3388 or 301-934-9305, ext 5152 or 5159.

Age: 3-5

Resident Fee: \$35 Non Resident: \$40

4540.WPT Tue Jan 6-Feb 17 6:00-7:00pm

Site: Port Tobacco Recreation Center

5090.NO1 Wed Jan 7-Feb 18 6:00-7:00pm

Site: Davis Middle School, Waldorf

0850.WHE Thu Jan 8-Feb 19 6:00-7:00pm

Site: Henson Community Center, Indian Head

5090.NO2 Sat Jan 17-Feb 21 9:00-10:00am

Site: Davis Middle School, Waldorf



NEW! Digital Photography for Beginners



This is a series of lessons designed to introduce beginning photographers to the basic techniques of digital photography. You will learn how to set up a composition, how to use the auto focus function, how to back up and save files to a CD, edit photos on the computer, and much more. You need to bring your own digital camera. We supply the computer lab. Min 5/Max 15.

Age: 18+ 2158.WSM
Mon • Feb 2-23 7:00-8:00pm

Registration Deadline: Jan 27
 Resident Fee: \$50; Non-Resident: \$60
 Site: Smallwood Community Ctr, Indian Head

Cooking

Little Chefs Cooking & Nutrition for Kids!

Join Marcie Leggett of Events by Design and kick your cooking up a notch. Our little chefs will make no-bake recipes, simple desserts, and be introduced to international foods. Kitchen safety will be discussed. A personal chef hat, class cookbook, and supplies are all included. Min 5/Max 10.

Age: 6-12
 1363.M01 Sat Jan10-Jan31 12:45-1:45pm
 1363.M02 Sat Feb 7- Feb 28 12:45-1:45pm
 1363.M03 Sat Mar 7-Mar 28 12:45-1:45pm
 Resident Fee: \$40; Non-Resident: \$45
 Site: Mattawoman Community Center, Waldorf

Chocolate is Always in Season

Learn the edible art of dipping and decorating strawberries, bananas, pretzels, and more with white and milk chocolate. Take home a treat box for yourself or give this delectable gift to someone special. Min 5/Max 10.

Age: 12+ 0213.WHA
 Wed Feb 11 7:00-9:00pm
 Registration Deadline: Feb 9
 Resident Fee: \$10; Non-Resident Fee: \$12
 Site: Hanson Community Center, Waldorf

Crafting & Art

Introduction to Woodcarving

Introduction to basic woodcarving and finishing techniques. Instructor: Melvin Williams Min 4/Max 10.

Age: 16+ 2505.WSO
 Tue Jan 6- Feb 24 7:00-9:00pm
 Resident Fee: \$75; Non-Resident \$80
 Site: Somers Community Center, La Plata

Creative Memories

Learn to create a unique, photo safe album to showcase your favorite photos. Bring 6-10 theme related photos. No Polaroids please. Supply fee due to instructor. Program meets first Saturday of each month. Instructor: Cynthia Simmons. Min 1/Max 20

Age: 18+
 Fee: \$10 supply fee per class

Sat Jan 3 10:00am-2:00pm
 Sat Feb 7 10:00am-2:00pm
 Sat Mar 7 10:00am-2:00pm
 Site: Henson Community Center, Indian Head

Sat Jan 10 10:00am-2:00pm
 Sat Feb 14 10:00am-2:00pm
 Sat Mar 14 10:00am-2:00pm
 Site: Wade Community Center

Knitting/Crochet Classes

Knit one, pearl two. Learn beginning knitting and crocheting with instructor Betty Mudd. Classes separate to learn one or both of the skills. Supplies included. Class and cost is for the two days as specified. Min 5/Max 10.

Age 15+
 Resident Fee: \$15; Non-Resident: \$20

Knitting

2629.WSO Tue Jan 6 & 13 7:00-9:00pm
 Site: Somers Community Center, La Plata

1063.WMA Tue Feb 3 & 10 7:00-9:00pm
 Site: Mattawoman Community Center, Waldorf

Crocheting

2630.WSO Tue Jan 20 & 27 7:00-9:00pm
 Site: Somers Community Center, La Plata

1064.WMA Tue Feb 17 & 24 7:00-9:00pm
 Site: Mattawoman Community Center, Waldorf

New! Mother/Daughter Bracelet Workshop

Mothers and daughters, aunts and nieces, or just you and your best friend can come and create a zig zag bracelet or other type of bracelet. The zig zag bracelet will consist of seed beads and bugle beads to create a delicate zig zag flower design bracelet. Learn how to read a pattern, attach a clasp and complete a bracelet. All supplies included. Min 4/Max 20.

Age: 5+
 0920.HE1 Wed Jan 14 6:00-7:00pm
 0920.HE2 Wed Feb 11 6:00-7:00pm
 0920.HE3 Wed Mar 11 6:00-7:00pm

Registration Deadline: One week prior to start
 Resident Fee: \$10; Non-Resident \$15
 Site: Henson Community Center, Indian Head

New! Trash to Treasures

What better way to recycle than to use an old or broken piece of jewelry to create something new. You supply the piece of jewelry and we'll supply everything else for you to create something new...a necklace, bracelet, earrings, or maybe even just some charms for your cell phone or key chain. This class is for all skill levels. Min 4/Max 20.

Age: 5+
 0849.HE1 Sat Jan 17 11:00-12:00pm
 0849.HE2 Sat Feb 21 11:00-12:00pm
 0849.HE3 Sat Mar 21 11:00-12:00pm

Registration deadline: One week prior to start
 Resident Fee: \$5; Non-Resident; \$6
 Site: Henson Community Center, Indian Head

Beginning Drawing

The focus on this class is learning to draw what you see and to respond to observed subject matter. The class will concentrate on drawing exercises and experimenting with different drawing materials. You will develop an understanding of perception, spatial relationships, process, and the nature of form. No previous experience necessary. Min 3/Max 8.

Age: 12+ 1757.WPI
 Wed Jan 21-Mar 11 6:30-8:30pm
 Registration Deadline: Jan 16
 Resident Fee: \$95; Non-Resident: \$100
 Site: Piccowaxen Community Center, Newburg

Valentines Day

Make your someone special a singing Valentine and a bouquet of balloon flowers. We will provide markers, cards, flowers, and all supplies.



Age: 6+ 1444.WMA
 Mon Feb 9 6:00-6:45pm
 Resident Fee: \$4; Non-Resident: \$5
 Site: Mattawoman Community Center, Waldorf

SHOP • CROP SCRAP & STAMP



Enjoy uninterrupted scrapbooking time, learn new techniques, and take this opportunity to purchase the latest supplies or scrapbooking tools. Vendors will be on hand with a large selection of scrapbook products and supplies available for purchase to help turn your favorite pictures into family heirlooms that you'll proudly display and treasure forever. Event is limited in space to ensure a quality and personable experience for all. Registration is available day of event if space permits. Participant fee includes crop space (2 people per 6'-8' table), demonstrations and tips throughout the day by scrapbooking professionals, lunch, dinner, beverages, and snacks. Child care provided for paid vendors and participants at an additional fee. Children must be toilet trained. Enjoy door prizes throughout the day.

Age: All

Sat • Mar 14
10:00am-9:00pm

Site: Wade Community Ctr, Waldorf

Participants: 2174.WSM

Registration Deadline: Mar 5
Resident Fee: \$40; Non-Resident; \$45

Vendors: 2175.WSM

Set-Up: 9:00-10:00am
Registration Deadline: Mar 5
Resident Fee: \$50; Non-Resident; \$55

Child Care: 2176.WSM

Registration Deadline: Mar 5
Resident Fee: \$10; Non-Resident; \$15

Dance

Line Dancing

Sign up to learn the hottest dances! Be ready to dance at your next event...it ain't just for county music anymore! Come learn synco-pated steps to the newest dance music. Meet new friends and other dance enthusiasts. For beginners and veteran dancers. Refreshments provided. Min 5/Max50.

Age: 16+ 3580.WWA
Thu Jan 8-Feb 12 7:00-8:30pm
Resident Fee: \$35; Non-Resident: \$40
Site: Wade Community Center, Waldorf

Beginner D.C. Hand Dance

Learn to work the dance floor with ease and style. Hand Dance is a partner style, swing dance with a smooth flow. Singles and couples welcome; no partner necessary for class. Eight, 90 minute lessons. Join instructors Billy Parker and Rickie Owens for easy instruction. No rubber-soled shoes. Class size is limited. Min 16/Max 30. Learn more at www.praisehanddance.com.

Age: 18+ 1453.WMA
Sat Jan 24-Mar 14 11:00am-12:30pm
Resident Fee: \$80/person; Non-Resident: \$90
Site: Mattawoman Community Center, Waldorf

Hand Dancing

Learn this fantastic dance style. Singles and partners welcome! Separate beginner and intermediate classes available. Program instruction is provided by The 7th Step Hand Dance Academy. No class Apr 9. Min 8/Max 30.

Age: 18+
Beginner: 3236.WST Intermediate: 3237.WST
Thu Feb 26-May 7 7:00-8:00pm
Registration Deadline: Feb 20
Resident Fee: \$70; Non-Resident: \$75
Site: Stoddert Community Center, Waldorf

Etiquette

Treat Her Like A Lady

Calling all men! Who said that chivalry is dead? This class is a sure way to help you distinguish yourself as a gentleman. Participants will learn gentleman's protocol. Instructor: Sharonda Johnson. Min2/Max10.

Age: 18+
0090.WHA Thu Jan 8-15 6:00-7:00pm
0091.WHA Thu Jan 22-29 6:00-7:00pm
0092.WHA Thu Feb 5-12 6:00-7:00pm
Registration Deadline: One week prior to start
Resident Fee: \$50; Non-Resident Fee: \$55
Site: Hanson Community Center, Waldorf

A Gentleman's Courtesy & A Lady's Response

This is a fun class for couples, married or dating. Participants will learn proper protocol. Topics covered in this course include rules of introduction, conversations that don't offend, seating protocol, and more. Instructor: Sharonda Johnson. Min 1 couple/Max 5 couples.

Age: 18+
0093.WHA Thu Jan 8-15 7:30-8:30pm
0094.WHA Thu Jan 22-29 7:30-8:30pm
0095.WHA Thu Feb 5-12 7:30-8:30pm
Registration Deadline: one week before start
Resident Fee: \$80; Non-Resident Fee:\$85
Site: Hanson Community Center, Waldorf

Diamonds in the Rough • Lessons in Etiquette for Young Ladies



An ongoing series offering something new each session. Learn the importance of self-worth, proper posture, effective communication, formal table settings, and the art of letter writing. Final lesson will be a formal tea and dessert. Instructor, Marcie Leggett, Events by Design. Min 5/Max 15.

Age: 6-12
1365.M01 Sat Jan 10-31 10:00-11:00am
1365.M02 Sat Feb 7-28 10:00-11:00am
1365.M03 Sat Mar 7-28 10:00-11:00am
Resident Fee: \$50; Non-Resident: \$55
Site: Mattawoman Community Center, Waldorf

Boys 2 Gentlemen • Lessons in Grooming for Young Men



Learn to tie a Windsor Knot, cover basic grooming tips, learn proper phone and social etiquette. Be more self-assured and have confidence in social settings. Min5/Max15.

Age: 6-12
1398.M01 Sat Jan 10-31 11:30am-12:30pm
1398.M02 Sat Feb 7-28 11:30am-12:30pm
1398.M03 Sat Mar 7-28 11:30am-12:30pm
Resident Fee: \$50; Non-Resident: \$55
Site: Mattawoman Community Center, Waldorf

Take a trip with Parks & Recreation!

Check out the many getaways planned for the season...See pgs 20-21.

Fitness

Please consult your physician before beginning any exercise program.

Boot Camp

This fitness boot camp is designed to target all body areas. Grab your water bottle and an exercise mat, and come join certified personal trainer Keith Mitchell in a variety of exercises that will help you lose weight, increase your energy level and flexibility, all in a safe group environment. Min 5/Max 20. No class Jan 19 or Feb 16.

Age: 16+

Registration Deadline: One week prior to start

Site: Stoddert Community Center, Waldorf

3151.001 M/W/F Jan 12-Feb 2 7:00-8:00pm
Resident Fee: \$110; Non-Resident: \$120

3151.002 M/W/F Feb 9-Mar 2 7:00-8:00pm
Resident Fee: \$110; Non-Resident: \$120

3151.003 M/W/F Mar 9-27 7:00-8:00pm
Resident Fee: \$108; Non-Resident: \$118

Total Body Toning

Sign up today to tone your stomach, hip, and thigh muscles. The series of exercises performed will help you trim up and shape up for the new year! Min 5/Max 12.

Age: 16+ 2685. WSO

Tue Jan 6-Feb 10 6:30-7:45pm

Registration Deadline: Jan 5

Resident Fee: \$60; Non-Resident: \$65

Site: Somers Community Center, La Plata

Women's Fitness Class

Interested in improving your health or getting into shape? Join us at Hanson Community Center. You will need running/walking shoes and a desire to work hard. Class will include a variety of exercises for total body fitness. Instructor: Marlon Curtis. Class size is limited. Min 3/Max 16. No class Jan 19 or Feb 16.

Age: 18+

Resident Fee: \$50/session; Non-Resident: \$55

Site: Hanson Community Center, Waldorf

Advanced Class

0004.001 Mon/Wed Jan 5-28 7:00-8:00pm

0004.002 Mon/Wed Feb 2-25 7:00-8:00pm

0004.003 Mon/Wed Mar 2-25 7:00-8:00pm

Beginner Class

0003.001 Tue/Thu Jan 6-29 7:00-8:00pm

0003.002 Tue/Thu Feb 3-26 7:00-8:00pm

0003.002 Tue/Thu Mar 3-26 7:00-8:00pm

Weighted Hoop Class

Hula hooping is a unique and fun way to spice up your workout. Besides being oodles of fun, it's great aerobic exercise that can tone your abs, arms, and thighs, increase cardiovascular stamina, and strengthen core muscles. You could burn up to 100 calories in just 10 minutes! Instructor: Risa Montgomery. Min 5/Max 12.

Age 18+

0009.001 Tue/Thu Jan 6-29 4:00-5:00pm

0009.002 Tue/Thu Feb 3-26 4:00-5:00pm

0009.003 Tue/Thu Mar 3-26 4:00-5:00pm

Registration Deadline: One week prior to start

Resident Fee: \$50; Non-Resident: \$55

Site: Hanson Community Center, Waldorf

Integral Yoga

Integral Yoga is a system of fitness that promotes better physical and mental health through gentle movements and stretches. The breathing and deep relaxation are techniques for reducing stress. These techniques, when practiced regularly can promote mental clarity, calmness, focus, optimum functioning of the mind, create a sense of physical well-being, increased flexibility and strength, tones and strengthens internal organs. Clinically proven effective as preventative health maintenance and effectively treats the symptoms and causes of chronic stress. Bring your own mat, small throw blanket, and a water bottle. Instructor: Nefredia Tyagi Covington. Min 5/Max 20.

Class is offered at Stoddert on Tuesdays or at Hanson on Thursdays for a fee of \$90 per session. Register for both days and save \$60; only pay \$120.

Age: 18+

Registration Deadline: Friday before start

Resident Fee: \$90; Non-Resident Fee: \$95

3154.001 Tue Jan 6-Feb 10 6:30-7:45pm

3154.002 Tue Feb 24-Mar 31 6:30-7:45pm

Site: Stoddert Community Center, Waldorf

0085.001 Thu Jan 8-Feb 12 6:30-7:45pm

0085.002 Thu Feb 26-Apr 2 6:30-7:45pm

Site Hanson Community Center, Waldorf

Piloga

This exercise class will introduce you to the mind, body, and spirit connection through the sacred movement of meditation, yoga, pilates, and belly dancing. Wear loose, comfortable clothing and bring an exercise mat. Six sessions each. Instructor: K. Aspelin. Min 5/Max 20.

Age: 15+ 2683.SSO

Sat Jan 10-Feb 28 10:30-11:30am

Registration Deadline: Jan 5

Resident Fee: \$65; Non-Resident: \$70

Site: Somers Community Center, La Plata

CHALLENGE 2B FIT

This class will challenge kids and teens to put away the Xbox and get off the computers for 45 minutes of fitness fun. Instructor Richard Holmes will utilize music during many fun activities to improve all areas of fitness... cardiovascular fitness, muscular strength and flexibility, as well as improve overall stamina, speed, and agility. Min 5/Max 25.

Age: 5-16 Mon/Wed Jan 12-Feb 11

Registration Fee: FREE

Site: Wade Community Center, Waldorf

Age: 5-7 3793.W01 5:30-6:15pm

Age: 8-11 3793.W02 6:15-7:00pm

Age: 12-16 3793.W03 7:00-7:45pm

New at Port Tobacco!

jazzercise®

Beginning January 5

Fresh Moves, New Music, Pure Motivation!

Each 60-minute workout blends dance and muscle toning movements choreographed to today's hottest music. Our instructors make all the routines fun and easy to follow. Every class includes a warm-up, a 30-minute aerobic workout, a muscle toning and strength training segment, and a stretch finale. All fitness levels welcome.

**For more information or to register,
please contact Jazzercise at 301-932-5646.**

**Each Monday & Wednesday • 4:40-5:40pm & 5:45-6:45pm
Each Saturday • 9:00-10:00am**

Monthly Fee: \$38 • Site: Port Tobacco Recreation Center

Receive a free week when you bring this ad. Offer expires Jan 31, 2009.



Cardio Kickboxing & Body Sculpting

Join certified personal trainer, Kelvin Delmar with Resurrect Fitness, who specializes in bringing your body back to life. Shed extra pounds while having fun. Increase stamina, flexibility, strength, and toning. Bring a towel and jump rope. Nutritional counseling and bottled water provided. No class Feb 16. Min 10/Max 30.

Age: 18+ 1225.WMA
 Wed/Mon Jan 21-Feb 23 7:00-8:00pm
 Resident Fee: \$60; Non-Resident: \$65
 Site: Mattawoman Community Center, Waldorf

Seminars & Workshops

Wills, Trusts & Estate Planning

Everyone needs this information for themselves, their parents, or their children. This class will cover wills, living trusts, advanced health care directives, and tax planning. A representative from Edward Jones will discuss. Min 4/Max 10.

Age: 18+
 Registration Deadline: Feb 16
 Resident Fee: Free; Non-Resident: \$2

2529. WSO Wed Feb 18 7:00-8:30pm
 Site: Somers Community Center, La Plata

1629. WPI Wed Feb 25 7:00-8:30pm
 Site: Piccowaxen Community Center, Newburg

Garden Care

Now is the time to do so much in the garden. Where do you start? "Do I trim now or in the fall? What fertilizer should I use?" Come to this informative discussion on general garden care. Other topics include choosing the right plant, spacial relations and needs, as well as soil constraints. Bring a notepad so you don't forget these great pointers! Min 10/Max 20.

Age: 18+ 3109.WST
 Sat Mar 14 11:00am-12:30pm
 Registration Deadline: Mar 6
 Resident Fee: \$5; Non-Resident: \$7
 Site: Stoddert Community Center, Waldorf

Dove Self Esteem Workshop for Girls

Bring your 8-16 year-old young ladies to learn the importance of self respect and acceptance. It is the workshop you have seen promoted in the media, encouraging self-assurance and confidence. Young girls are battered by ads and peer pressure to meet an unattainable standard. This workshop will enable them to be proud of who they are. More than 230,000 girls in the United States have benefited from the activity booklets and sessions included in this workshop.

Age: 8-16 1286.WMA
 Sat Mar 21 10:00am-1:30pm
 Registration Fee: FREE
 Site: Mattawoman Community Center, Waldorf

Annual Egg Hunt with the Easter Bunny

Join us for a hoppin' good time. Activities include a craft project, balloon animals, story time, games, and an "eggcellent" egg hunt. Event held rain or shine. Min 10/Max 100.

Age: 2-10 0499.WHA
Sat • Apr 4 • 10:00am-Noon

Registration Deadline: Apr 1
 Resident Fee: \$7; Non-Resident: \$9
 Site: Hanson Community Center, Waldorf



Personal Protection Self Defense for Women

A hands-on workshop of personal protection at home and away. Techniques will be taught and discussed on an individual basis. Learn how size and strength are not as important as you think in protecting yourself. Be pro-active! Think ahead! Min 8/Max 20.

Age: 12+ Fee: Free
 1769. WPI Mon Mar 9 7:00-8:00pm
 Site: Piccowaxen Community Center, Newburg
 2606. WSO Mon Mar 16 7:00-8:00pm
 Site: Somers Community Center, La Plata

Special Events

Martin Luther King Coloring Contest

Coloring pages are available at all Centers. Return completed form to any of the Community Centers by January 14. One winner will be selected from each age group. Winner will receive a prize. Min 2/Max 99.



Age: 5-6 0115.HA1 Jan 5-14 3:00-9:00pm
 Age: 7-8 0115.HA2 Jan 5-14 3:00-9:00pm
 Age: 9-10 0115.HA3 Jan 5-14 3:00-9:00pm
 Registration Fee: FREE
 Site: Hanson Community Center, Waldorf

La "Tea" Da Social

Enjoy a cup of tea, luscious desserts, and meet new friends. Participants will enjoy activities, discussions, and a craft project. Min 3/Max 10.

Age: 12+ 0434.HA5
 Sat Jan 10 11:00am-1:00pm
 Registration Deadline: Jan 8
 Resident Fee: \$5; Non-Resident: \$7
 Site: Hanson Community Center, Waldorf

Dance Dance Revolution

Stop by the Center to show off your skills at the new craze that has hit Wade Community Center...Dance Dance Revolution. Participants will be divided into groups according to skill level. Refreshments provided. Min 4/Max 20.

Age: 6-17 3792.W02
 Fri Feb 20 6:00-9:00pm
 Resident Fee: \$3; Non-Resident: \$4
 Site: Wade Community Center, Waldorf

The 50s Revisited... No Batteries Required Wright Brothers Anniversary Fun

Using provided balsa wood airplanes that you assemble, perfect your aerial skills through our course of hula hoops, stacks of mats, and hair-pin turns. Take part in an obstacle challenge for the perfect landing. Light refreshments will be served. A fun night out for the family.

Age: 6+ 1449.M03
 Tue Mar 10 6:30-7:30pm
 Resident Fee: \$4/participant; Non-Resident: \$5
 Site: Mattawoman Community Center, Waldorf

Sports Programs

Leagues, Classes, Special Events

Tae Kwon Do

Students learn the basic principles and health benefits of Hapkido and Tae Kwon Do. Topics to be covered include kicks, punches, blocks, forms, tumbling, falls, breathing, history, and self-defense. Learn from certified instructor William Blake. Students should wear loose, comfortable clothing (sweat pants, T-shirt) or you can purchase a uniform from the instructor. Min 3/Max 9.

Resident Fee: \$75; Non-Resident: \$80
Site: Somers Community Center, La Plata

Each Tue Jan 6-Mar 24
Beginner (Age 6-12) 2666.WSO 5:00-6:00pm
Beg & Interm (Age 13+) 2669.WSO 6:00-7:00pm

Each Thu Jan 8-Mar 26
Little Dragons 2665.WSO 5:30-6:00pm
Advanced 2668.WSO 6:00-7:00pm

Beginner/Intermediate Chess Nights

Learn to move the chess pieces, opening moves for the beginner, tournament competition moves and strategy, and more. The first day will be an introduction to the program. Please provide T-shirt size at registration. Sponsored in part by Tri-County Chess Corner, Mr. Felix Cummings. Fee covers 10 classes and cost of T-shirt. Min 6/Max 99.

Age: 6+ 3632.SWA
Fri Jan 9-March 13 7:00-9:00pm
Resident Fee: \$120; Non-Resident: \$130
Site: Wade Community Center, Waldorf

Beginner Tennis Workshop

Join us for some initial skill learning. Forehand and backhand will be addressed with fun and learning. Min 5/Max 15.

Age: 7-9
3181.001 Wed Jan 28 5:45-6:30pm
3181.002 Wed Feb 18 5:45-6:30pm
Registration Deadline: One week prior start
Resident Fee: \$5; Non-Resident: \$6
Site: Stoddert Community Center, Waldorf

Double Dutch Program

Wade Community Center is still looking for youth that are interested in being a part of our FIRST Double Dutch Team. Please contact the Center at 301-645-9291 if you are interested. Practices will begin in the winter with the possibility of attending a competition in the spring.

Age: 8+ Site: Wade Community Center

Special Events

Skate Night

Bring your skates, heelys, or rollerblades for another night of skating with friends. Skating games and an obstacle course will be available. Prizes will be up for grabs! Min 8/Max 40.

Age: 5-13
3693.W02 Fri Feb 13 6:00-9:00pm
3693.W03 Fri Mar 13 6:00-9:00pm
Resident Fee: \$4; Non-Resident: \$5
Site: Wade Community Center, Waldorf

Spring Break Mini Camp

Basketball, soccer, volleyball, and much more will be offered in this four day mini camp. Bring a bag lunch and drink each day. Space is limited. Min 5/Max 25.

Age: 6-12 3649.SWA
Mon-Thu Apr 6-9 8:00am-4:00pm
Registration Deadline: Apr 1
Resident Fee: \$75; Non-Resident: \$85
Site: Wade Community Center, Waldorf

Sports/Game System Tournaments

New! Adult Playstation 2 Madden 2009 Tournament

Got game? We want to see it! Come show off your skills and compete against other Playstation enthusiasts. This is a single elimination tournament. Other activities and video games to play while you wait. Space is limited. Min 4/Max 10.

Age: 18+
0847.HE1 Mon Jan 5 5:00-8:00pm
0847.HE2 Mon Feb 2 5:00-8:00pm
0847.HE3 Mon Mar 2 5:00-8:00pm
Registration deadline: Two days prior
Resident Fee: \$5; Non-Resident: \$6
Site: Henson Community Center, Indian Head

Playstation 2 Madden 2008 Tournament

Like to play Madden? Come by the Center for pizza, soda, chips, and bragging rights. Single elimination tournament with board games and other activities to play while you wait. Space is limited. A gift certificate will be awarded to the winner. Min 6/Max 12.

Age: 12-18 3784.W01
Thu Jan 29 6:00-9:30pm
Registration deadline: Two days prior
Resident Fee: \$5; Non-Resident: \$6
Site: Wade Community Center, Waldorf

Playstation 2 NBA LIVE 2008 Tournament

Like to play Live? Come by the Center for pizza, soda, chips, and bragging rights. Single elimination tournament with board games and other activities to play while you wait. Space is limited. Min 6/Max 18.

Age: 10-18 3778.W03
Fri Mar 13 6:00-9:30pm
Registration deadline: Two days prior
Resident Fee: \$5; Non-Resident: \$6
Site: Wade Community Center, Waldorf

Step On It!

Remote Control Car Races

Do you have a battery powered remote control car? Having trouble finding a place to run? We are taking a list of interested participants to organize a weekly fun time. A light snack will be provided. Min 4/Max 10. Start date to be announced.

Age: 10+ 3300.WST Fri *Jan-Mar 6:30-8:00pm
Resident Fee: \$5/day; Non-Resident Fee: \$7
Site: Stoddert Community Center, Waldorf

*Start Date To Be Announced

Adult Drop-In Programs

All listed programs are ongoing unless otherwise noted. Note: Programs held at Davis and Port Tobacco will start in January. Please call for details.

Fee: \$3/visit (unless otherwise noted)

Adult 18+ Drop-In Basketball

3608.000 Thu 8:00-9:30pm
Site: Wade Community Center, Waldorf

4500.000 Tue 8:00-9:30pm
Site: Port Tobacco Recreation Center

1599.000 Wed 7:00-8:45pm
Site: Piccowaxen Community Center, Newburg

30+ Drop-In Basketball

5090.000 Wed 7:00-9:00pm
Site: Davis Middle School, Waldorf

4505.000 Fri 8:00-9:30pm
Site: Port Tobacco Recreation Center

1622.000 Tue 7:00-8:45pm
Site: Piccowaxen Community Center, Newburg

2245.000 Mon/Wed 7:00-9:00pm
Site: Smallwood Community Center, Indian Head

Ping Pong & Foosball Drop-In

Ping pong balls and paddles provided. Bring your own paddle if you like.

Age: 17+ 3578.WWA
Tue Begins Dec 16 7:00-9:00pm
Registration Fee: FREE
Site: Wade Community Center

Adult Futsal Drop In

Min 1/Max 99

Age: 18+ 3601.000
Tue Ongoing 8:00-9:30pm
Site: Wade Community Center, Waldorf

Adult 18+ Drop-In Co-Ed Volleyball

4510.000 Wed 8:00-9:30pm
Site: Port Tobacco Recreation Center

3600.000 Wed 8:00-9:30pm
Site: Wade Community Center

2200.000 Tue/Thu 7:00-9:00pm
Site: Smallwood Community Center, Indian Head

Youth Drop-In Programs

New! FREE Hang Time

Nothing to do after school? We offer a variety of games such as basketball, soccer, volleyball, and dodgeball.

Age: 13-17 2155.000
Tue/Thu Ongoing 4:00-6:00pm
Fee: FREE
Site: Smallwood Community Center, Indian Head

2009 Elks Hoop Shoot

National Free Throw Contest

This event is FREE and open to the public. Awards presented to all age group winners. Winner moves up to District Level...then Regional and State Finals...State winner advances to National Finals where the winner will have their name enshrined in the James Naismith Memorial Basketball Hall of Fame.

Must include proof of age when registering (copy of birth certificate, passport, or baptismal certificate). Note: Age group eligibility is determined by child's age as of April 1, 2009, not necessarily their current age. Co-sponsored by Waldorf BPO Elks Lodge No. 2421 and the Division of Parks & Recreation.

Age: 8-13

Program Code: Girls: 5208 • Boys: 5207

Age Codes: 8-9: 101 • 10-11: 102 • 12-13: 103

Fri • Jan 16

Registration: 6:00pm • Competition: 7:00pm

Site: Wade Community Center, Waldorf



Adult Volleyball Leagues

Ten-match season (30 games). Players must not be eligible to participate at the high school level. Individuals looking to join a team, can contact the Registration Office and have their name placed on a free agent list.

Games Begin Mar 30 • Registration Deadline: Mar 10

Each league is open to all playing levels—from beginner to power.

Age: 18+ Team Fee: \$285

Late Registrations: Mar 11-12 with \$25 late fee.

Late registrations will only be accepted at the Parks & Recreation office located at the Department of Community Services building in Port Tobacco. When registering late, you must include the \$25 late fee.

Adult Co-Ed	5201.203	Mon/Wed
Women's	5201.208	Tue/Thu
Men's	5201.206	Tue/Thu

**For more information, please call
301-870-3388 or 301-934-9305,
both at ext. 5152 or 5159.**



Registrations for programs offered throughout this Guide are currently being accepted at the Parks & Recreation office at the Community Services building at 8190 Port Tobacco Road, Port Tobacco.

301-934-9305, 301-870-3388

Have a Ball!

Outdoor Sports Leagues for Youth & Adult

For further information on the leagues shown below, please call 301-932-3470 or 301-870-2778.

Adult Outdoor Soccer Leagues

Regular season play will be round-robin format (8-10 games). Post-season tournament will be offered. League will be open to one or more divisions of competition.

Age: 18+ Spring Registration: Mar 2-13
Games Begin: Early Apr Team Fee: \$450-\$700

League	Format	Day
Women's Age 18+	7 vs 7	Sun
Men's Age 18+	11 vs 11	Wed
Men's 35+	7 vs 7	Mon

Youth Outdoor Soccer Leagues

The Southern Maryland Youth Soccer League is first and foremost a recreational sports program. Its purpose is to provide an opportunity for youth to participate in soccer within designated age divisions. League play will be a round-robin schedule consisting of 8-10 games.

Age: 5-17
Spring Registration: Late Jan-Early Mar
Games Begin: Early Apr

League	Format	Field
U-7	7 vs 7, 4 vs 4	Small Field
U-9	7 vs 7	Intermediate Field
U-12	8 vs 8	Intermediate Field
U-14	11 vs 11	Regulation Field
U-18	11 vs 11	Regulation Field

Adult Softball Leagues

Regular season play will be round-robin format (18 games); teams play double-headers. Each team limited to a minimum of 15 players and maximum of 20.

Age: 18+ (and not attending high school)
Spring Registration: Mar 2-20
Games Begin: Late Apr Team Fee: \$550-\$600

League	Day
Adult Co-Rec	Fri/Sun
Men's	Mon/Wed/Thu
Women's	Tue

Youth Outdoor Baseball & Softball Leagues

For information regarding organizations offering youth baseball and softball programs, please call 301-932-3470 or 301-870-2778.

Youth Indoor Basketball Leagues

For further information on the leagues shown below, please call 301-934-9305 or 301-870-3388.

Middle School Spring Developmental Basketball League

Test your skills versus the best Charles County has to offer. This league is designed to allow middle school students who have dreams of playing high school basketball an opportunity to play against their peers. Players practice twice a week with practices starting at 6:00pm (weekdays), and Saturday starting at 10:00am. There will be an eight game regular season with playoffs. Games scheduled for Tuesdays, Wednesdays, Thursdays, and Saturdays. All divisions will be countywide, and based on grade level. Must show proof of age at time of registration. Players can only play at middle school community center they currently attend. Those attending private school must play for the center in their appropriate school zone. Games played twice a week. Postseason tournament played at local-area high schools. Players receive a team shirt along with a participation award at the conclusion of the season.

REGISTRATION IS LIMITED

Practice Begins: Mar 16 (estimate) Post Season Tournament: May 15-17

Registration Deadline: Feb 28

Resident Fee: \$75

Late Registration: Mar 2-5 with add'l \$15 late fee.

Late registrations will only be accepted at the Parks & Recreation office located at the Department of Community Services building in Port Tobacco. When registering late, you must include the \$15 late fee.

Grades for 2008-2009 School Year

Use the code next to your grade/gender then add center ID for the school your child either attends, or for private school students that they are zoned to attend. (Ex. code: 5130.HA6 = 6th Grade/Boys@ Hanson Community Ctr).

Grade/Gender	Code	Grade/Gender	Code
6th Grade/Boys	5130	6-8th Grade/Girls	5140
7th Grade/Boys	5131		
8th Grade/Boys	5132		

Middle School ID

Davis (DA)	Hanson (HA)	Henson (HE)	Mattawoman (MA)
Piccowaxen (PI)	Smallwood (SM)	Somers (SO)	Stoddert (ST)

Spring In-House Basketball Program

Non-competitive, 4 week program designed to develop skills and promote fun while participating in loosely organized games. Players go through four fundamental stations and play round-robin style games. Games and practices will be in one location. Players will be placed on teams by Parks & Recreation staff. Teams meet four week-nights and two Saturdays. Each player receives reversible practice/game jersey.

Open to Age 5-8

Practices Begin: Apr 14 • End of Season/Countywide Event: May 9

Registration is Limited

Registration Deadline: Mar 28 • Late Registration: Mar 30-Apr 2

Late registrations will only be accepted at the Parks & Recreation office located at the Department of Community Services building in Port Tobacco. When registering late, you must include the \$15 late fee.

Resident Fee: \$35

Site: Wade Community Ctr, Waldorf, and Port Tobacco Recreation Center located at the Department of Community Services building in Port Tobacco

Wade Community Center	
Age	Code
5-6	4545.WA1
7-8	4547.MA2

Port Tobacco Recreation Center	
Age	Code
5-6	4550.PT1
7-8	4552.PT2

Sports Code of Conduct

Participation in sports can be a great learning experience for players, coaches, referees, parents, and administrators alike. These experiences often transfer into our daily lives at home, at school, and in the office during our recreational time.

The Division of Parks & Recreation has developed the following Code of Conduct to establish standards for participation in all sports programs. All participants are encouraged to adopt these policies in order to provide a positive and rewarding experience for everybody involved in the programs. The Code of Conduct is based on sportsmanship and fair play while creating a fun and positive environment for all.

Players

Play for fun and enjoyment of the sport.

Winning is a consideration, but not the only one, nor the most important one.

Work hard to improve your skills.

Be a team player—get along with and cooperate with your teammates.

Learn teamwork, sportsmanship, and discipline.

Learn the rules and play by them. Always be a good sport.

Respect your coaches, teammates, parents, opponents, and the officials.

Never argue with decision of officials/coaches.

Respect the school and its facilities; without them you wouldn't have a place to play.

Parents & Spectators

Display good sportsmanship. Always respect players, coaches, and officials.

Know and study the rules of the game and support the officials.

Act appropriately; do not taunt or disturb other fans. Enjoy the game.

Cheer in a positive manner and encourage fair play.

Do not embarrass children by yelling, booing, or criticizing. Be supportive.

Do not use foul language.

Applaud a good effort in victory or defeat.

Recognize the importance of volunteer coaches.

Sports League Registration Information

—Late registrations will only be accepted at the Parks & Recreation office located at the Department of Community Services building in Port Tobacco. When registering late, you must include the \$15 late fee.

—Proof of age required for all new registrants at the time that you register child for sports programs. No exceptions to this rule.

—Carpool requests, practice location requests, or requests for a particular coach cannot be guaranteed.

—Phone-in registrations cannot be taken for sports leagues due to the volume of information required. No exceptions to this rule.

—**Online registration is not available at this time.**

Refund Policy for sports league programs:

—All requests for refunds for sports league programs must be received, in writing (**Middle School Basketball League by March 30, 2009; Spring In-House League by April 20, 2009**). Fax requests for refunds are accepted at 301-934-5624. Late fees are non-refundable. A \$10 administrative fee will be deducted from all approved refunds, regardless of circumstances, unless the program is canceled by the Division of Parks & Recreation.

Youth Sports Leagues Volunteer Coach Application

The Division of Parks & Recreation is looking for volunteer youth sports league coaches.

Complete this form and [mail](#) to:

Department of Community Services Building
Attn: Registration Office
8190 Port Tobacco Road
Port Tobacco, MD 20677

You may also fax the form to 301-934-5624, or drop it by at the above address.

Name: _____

Date: _____

Complete Address: _____

Daytime Phone #: _____

Evening Phone #: _____

E-mail: _____

Age group you prefer (circle):

Middle School Basketball League:

6th Grade Boys 7th Grade Boys (age 12-14)

8th Grade Boys 6th-8th Grade Girls

Spring In-House Basketball League:

Age 5-6 at Wade Community Center

Age 5-6 at Mattawoman Community Center

Age 7-8 at Port Tobacco

Age 7-8 at Port Tobacco

A volunteer coach will receive a 50% refund off the regular fee for one child if they are selected to coach. Coaching refunds will be processed after games begin.

Child's Name: _____

Coach Shirt Size: (circle one)

S M L XL XXL Other _____
(Shirt sizes run small)

**This is not a program registration form.
See page 39 for program registration.**

Earn A Refund!

If you volunteer to coach, you will receive a 50% refund off of your child's registration fee, if selected to coach.

This refund applies to one participating child only. The refund will be processed after the first game. Please do not exclude the refund from your enrollment fee.

Nanjemoy Community Center

301-246-9612 • 301-609-7639 • 301-753-1647 • Fax 246-9031
 4375 Port Tobacco Road, Nanjemoy
 Hours: Mon-Wed & Fri 8:00am-9:00pm • Thu 8:00-5:00pm

Take a look at the many programs offered at the Nanjemoy Community Center. Please call if you have questions or require more information.



News & Notes

SHARE Food Network

The SHARE Food Network provides a nutritious food package of frozen meat, fish, poultry, and fresh fruit and vegetables each month to area residents. SHARE is very affordable. For \$19.50 and two hours of volunteer service each month, participants receive food that would cost approximately \$35 in a grocery store. The program is open to everyone! Nanjemoy Community Center is an official distribution site. For more details contact the Center at 301-246-9612 or Zelford Platt at 240-682-5432

Volunteer Hours

Need Community Service Hours for Graduation? The Center is host to various events and programs. We are in constant need of volunteers to make these events a success. Call for details.

Calling Local Artists!

The Nanjemoy Community Center is looking for local artists who wish to display their paintings and artwork on the wall of NCC. Only local, original artwork will be accepted. Call for details.

Rent the Center

Looking for a fabulous location for your son's 3rd birthday party, a neighbor's retirement, your best friend's baby shower, or a wedding? Nanjemoy Community Center is the perfect facility for all varieties of events. Rental rates range between \$20 and \$40 an hour. Call the Center for details.

Instructors Needed

Do you have a special skill you would like to share with others? We are always looking for instructors for new and exciting programs. Call for details.

Programs for Toddlers & Younger Children

Pee Wee Parties

Bring the little ones to these fun and age appropriate theme parties. Each theme will have different activities. All children must be accompanied by an adult. Min 5/Max 10.

Age: 3-5

Registration Deadline: One week prior to start
 Resident Fee: \$3; Non-Resident: \$5

New Years

9255.001 Wed Jan 7 10:00-11:00am

Valentine's Day

9255.002 Wed Feb 11 10:00-11:00am

St. Patrick's Day

9255.003 Wed Mar 11 10:00-11:00am

Story Time Series

Enjoy delightful children's stories followed by activities and refreshments. Children must be accompanied by an adult. Min 4/Max 8.

Age: 3-6

Registration Deadline: One week prior to start
 Registration Fee: FREE

The Cat in the Hat

9214.001 Mon Jan 12 6:00-7:00pm

Clifford, the Big Red Dog

9214.002 Mon Feb 9 6:00-7:00pm

Cinderella

9214.003 Mon Mar 9 6:00-7:00pm

Toddler Time

Fun and learning with a story, music, crafts, and play time. Parent/adult caregiver participates in all activities. Scholarships available. Min 4/Max 8.

Age: 18 mos-3 yrs 9150.WNA

Tue Jan 13-Mar 3 10:30-11:30am

Registration Deadline: Jan 9

Resident Fee: \$25; Non-Resident \$30

Winnie the Pooh Super Sleuth's Party

Celebrate Winnie the Pooh Day at the Center. We'll play Pooh games, activities and do some super sleuthing. All children must be accompanied by an adult. Min 4/Max 10.

Age: 2-5 9276.WNA

Fri Jan 16 3:00-4:00pm

Registration Deadline: Jan 11

Resident Fee: \$2; Non-Resident: \$3

Music, Rhythm & Movement

Class teaches songs, how to keep a beat, sing a tune, use basic instruments, and more. Children will develop social skills, focusing and listening skills, coordination, and just have fun. Preregistration is required. Scholarships available.

Age: birth-4 years 9151.WNA

Fri Jan 16-Mar 6 10:00-11:00am

Registration Deadline: Jan 9

Resident Fee: \$25; Non-Resident \$30

JumpBunch

This age-appropriate program introduces sports and fitness to children in a safe and noncompetitive environment. Teaching consists of praise and encouragement enabling kids to build self confidence, develop healthy habits and a positive attitude. Students are guided through all phases of physical development: eye/hand coordination, fine and gross motor skills, strength and balance. A different activity each week like sports, sports readiness skills, fitness activities, and working together. Awards given at the end of session. The director of the program is an AFPA Certified Children's Fitness Specialist. For more information, please call 301-737-4700 or e-mail: southernmd@jumpbunch.com. No class Jan 19 or Feb 16. Min 7/Max 16.

Age: 2-5 9092.WNA

Registration Deadline: December 29

Mon Jan 5-Mar 9 10:00-10:30am

Resident Fee: \$56; Non-Resident: \$60



Thursdays at the Center

Are you watching your grandkids, nieces, nephews, or your own kids during the winter months? Got cabin fever? Want to get them out of the house for some local fun? Bring them to the Center. You and the kids will participate in great activities including crafts, movies, games, and more. Fee is for one adult and one child. Fee includes all supplies. Min 4/Max 12.

Age: 2-5 9241.WNA
 Thu Jan 22-Mar 12 10:00-11:30am
 Registration Deadline: Jan 2
 Resident Fee: \$8; \$3/add'l child;
 Non-Resident: \$10; \$5/add'l child

Pre-School Obstacle Course

Run, crawl, twist, and turn through our obstacle course. Enjoy a much needed snack and drink following all your hard work. Children must be accompanied by an adult. Min 4/Max 10.

Age: 2-5 9152.WNA
 Wed Feb 18 3:00-4:00pm
 Registration Deadline: Feb 11
 Registration Fee: Free

Dr. Seuss Birthday Party

Join us to celebrate Dr. Seuss's birthday. We'll read a classic Dr. Seuss story, do some fun activities and eat birthday cake. All children must be accompanied by an adult. Min 4/Max 8.

Age: 4-6 9218.WNA
 Mon Mar 2 3:00-4:00pm
 Registration Deadline: Feb 25
 Resident Fee: \$2; Non-Resident: \$3

Tea Party

You are cordially invited to a tea party at NCC. We will sip tasty teas and enjoy delicious treats. Dress in your best tea-time attire. Bring your little ladies to learn all about tea! All children must be accompanied by an adult. Min 4/Max 20.

Age: All 9215.WNA
 Mon Mar 9 1:00-2:00pm
 Registration Deadline: Mar 3
 Resident Fee: \$2; Non-Residents \$3

Pee Wee Soccer

Kids will run through various drill stations that teach game fundamentals: ball control, passing and receiving, shooting, and teamwork. Practice ends with a mini-game on a small field with small goals. No goal keepers will be used. All players should wear shin guards covered by socks, sneakers (or cleats if you have them). Bring a No. 3 soccer ball and bottle of water. All children must be accompanied by an adult. Min 6/Max 12.

Age: 4-5 9048.WNA
 Tue Mar 24-Apr 28 6:00-6:45pm
 Registration Deadline: Mar 17
 Resident Fee: \$24; Non-Resident: \$30

Clubs

Kids Club Night

Hey, kids! Leave your parents at home and join us at the Center for fabulous fun! Enjoy pizza and a drink for dinner followed by fun activities. Each night will have a special theme. Activities will include games, crafts, contests, movies, and more.

Age: 6-12
 Registration Deadline: Monday prior to start
 Resident Fee: \$3 in advance/\$5 night of;
 Non-Resident: \$5 in advance/\$7 night of

Mystery Night

9025.0001 Fri Jan 23 5:30-8:30pm

What a Mess!

9025.002 Fri Feb 27 5:30-8:30pm

Cinema Night

9025.003 Fri Mar 27 5:30-8:30pm

Kids Club

Come hang out at the Center after school. The afternoon will consist of homework help, as well as independent and structured activities. Fun stuff will include games, crafts, video games, movies, contests, and more.

Age: 6-12 9029.000
 Mon/Wed Ongoing 4:00-6:30pm
 Registration Fee: FREE

Teen Club

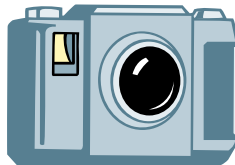
Hang out at the Center playing pool, basketball, air hockey, Playstation, and more. Talk to Center Staff about programs you would like to see for your age group.

Age: 13-17 9003.000
 M/W/F Ongoing 4:00-8:00pm
 Registration Fee: FREE

General Interest Classes

Getting the Most from your Digital Camera

Certified professional photographer Irving Harris will explain in clear, easy-to-follow terms how to get the best results from your digital camera. From basic information about the many settings on your camera to composition rules that set your images apart. This will be a "hands-on" class with plenty of opportunities to answer individual questions. Manual fee due to the instructor. Min 12/Max 25



Age: 16+ 9300.WNA
 Tue Jan 20-Mar 10 6:00-7:30pm
 Registration Deadline: Jan 12
 Resident Fee: \$125; Non-Resident: \$130

Kids in the Kitchen

Hungry? Don't know what to eat? Join us in the kitchen for this fun and informative series. Topics covered will be basic kitchen skills, breakfast, lunch, dinner, snacks, and desserts. Come hungry! Min 3/Max 6.

Age: 10-14 9080.WNA
 Mon Mar 16-Apr 6 6:30-7:30
 Registration Deadline: March 2
 Resident Fee: \$20; Non-Resident Fee: \$25

American Red Cross Babysitters Training

This two day course covers infant and child CPR as well as training in care giving, decision making, safety and first aid skills, and preventing and responding to emergencies. Course participants receive *The Babysitters Handbook*, which provides course review and 30 easy-to-follow first aid action plans for handling emergencies as well as infant and child CPR skills card. Participants are advised to bring a lunch, writing implement, and wear suitable clothing for performing CPR skills on the floor. Min 4/Max 10.

Age: 11-15 9045.WNA
 Tue/Thu Apr 6-7 9:00am-4:00pm
 Registration Deadline: Mar 30
 Resident Fee: \$64; Non-Resident: \$70

Computer Programs

NEW! Web Design

Learn HTML introduction for web design. Learn the basic skills to get you started creating your own website! Instructor: Elvia Butler. Min 8/Max 12.

Age: 10+ 9144.WNA
 Mon/Tue Jan 13-Feb 3 6:30-8:30pm
 Registration Deadline: Jan 6
 Resident Fee: \$25; Non-Resident: \$30

Computer Class

Basic computer instruction based on individual skill level. One-on-one instruction. Small class; fills quickly. Min 3/Max 4

Age: 18 + 9143.001
 Wed Jan 14-Feb 18 6:30-8:30pm
 Registration Deadline: Jan 7
 Resident Fee: \$54; Non-Resident: \$56

Children's Computer Camp

All levels welcome. Learn basic computer skills, Microsoft applications, and more. Instructor: Elvia Butler. Min 8/Max 12.

Resident Fee: \$25; Non-Resident: \$30
 Registration Deadline: Feb 13

Age: 7-10
 9154.001 Sat Feb 21-Mar 14 10:30-12:20pm

Age: 11-14
 9154.002 Sat Feb 21-Mar 14 1:00-3:00pm

Computer Lab

Type your resume, school paper, or other project. Internet access available. Age 17 and younger must have parental consent to use the Internet. Consent forms available in the office.

Age: All 9161.000
 Mon/Fri Ongoing 8:30am-8:30pm
 Tue/Wed Ongoing 8:30am-6:30pm
 Thu Ongoing 8:30am-4:30pm
 Registration Fee: FREE

Craft Classes

Bird Feeder Craft

Create a bird feeder for hungry birds during the winter months, when the snow covered ground makes food scarce. Join the Head Start students and the Senior Center participants for the afternoon session. All materials included. Min 4/Max 8.

Age: All
 9076.WNA Mon Jan 5 1:00-2:00pm
 9077.WNA Mon Jan 5 6:30-8:00pm
 Registration Deadline: Jan 7
 Registration Fee: \$3; Non-Resident: \$4

Snowman Crafts

Create fun snowmen crafts for the winter months. All supplies included. Children must be accompanied by an adult. Must preregister to ensure adequate supplies. Min 4/Max 8.

Age: All 9195.WNA
 Wed Jan 21 1:00-2:00pm
 Registration Deadline: Jan 7
 Resident Fee: \$3; Non-Resident: \$5

Quilting

Create an easy, but beautiful table runner. It's a great accent to any table. Stop by the Center to pick up a supply list. Min 2/Max 8.

Age: 18+ 9058.WNA
 Mon/Wed Jan 26-28 6:30-9:00pm
 Registration Deadline: Jan 19
 Resident Fee: \$20; Non-Resident: \$

Kids Craft Club

Create a different craft each session, like beading, painting, coloring, and more. All supplies provided. Preregistration required to ensure adequate supplies. Min 5/Max 12.

Age: 8-12 9029.WNA
 Tue Feb 3-24 6:30-7:30pm
 Registration Deadline: Jan 20
 Resident Fee: \$15; Non-Resident: \$18

Sew Easy

Create some "easy" sewing projects. All supplies are included. Preregistration required to ensure adequate supplies. Min 4/Max 8.

Age: 8-13 9090.WNA
 Tue Mar 3-24 6:30-7:30pm
 Registration Deadline: Feb 17
 Registration Fee: \$10

Easter Egg Dying & Decorating

Forget the mess. Decorate your Easter eggs at the Center. All supplies are provided. Children 12 and younger must be accompanied by an adult. Min 4/Max 15.



Age: All 9245.WNA
 Wed Apr 1 6:30-7:30pm
 Registration Deadline: Mar 25
 Registration Fee: \$5; Non-Resident \$7

Stamping with Staci Siwecki

We will be making 2-3 stamped projects. All supplies are included as well as door prizes and refreshments. Space is limited, so register early. You are welcome to bring a friend, but all guests must be registered. For more information on Stampin' Up, go to www.stampinwithstaci.stampinup.net to see what all the BUZZ is about. Min 4/Max 12.

Age: 9+
 9185.001 Tue Jan 13 7:00-9:00pm
 9185.002 Tue Feb 10 7:00-9:00pm
 9185.003 Tue Mar 10 7:00-9:00pm
 Registration Deadline: One week prior
 Resident Fee: \$12; Non-Resident: \$14

Art Classes with Nancy Knudsen Basics of Acrylic Painting

Increase your awareness of composition and develop your individual painting technique. Class teaches the basics of acrylic painting. Stop by the Center for a supply list.

Age: 18+ 9205.WNA
 Wed Jan 28-Mar 4 10:00-11:00am
 Registration Deadline: Jan 21
 Resident Fee: \$25; Non-Resident: \$30
 Registration Deadline: One week prior

Fitness Programs

Please consult your physician before beginning any exercise program.

FREE Fitness Orientation

Do you have questions about the fitness center? Sign up now to learn proper techniques on the fitness equipment and how to safely exercise. You will also receive a personalized chart that will remain at the Center to monitor your progress.

Age: 18 +
 9047.001 Tue Jan 6 6:00-7:00pm
 9047.002 Tue Feb 3 6:00-7:00pm
 9047.003 Tue Mar 3 6:00-7:00pm

Fitness Program

Take advantage of the fitness center with a NuStep machine, crunch boards, recumbent bike, Hoist single stack gym, and treadmills. This is an on-your-own program.

Age: 18 + 9046.000
 M/T/W/F Ongoing 8:30am-8:30pm
 Thu Ongoing 8:30am-4:30pm
 Registration Fee: FREE

Aerobics

Instructor Anita Butler will help get you in shape. This class is for all levels of fitness.

Age: 18+ 9015.001
 Mon/Wed Jan 5-Feb 11 6:30-7:30pm
 Registration Deadline: Jan 2
 Resident fee: \$50; Non-Resident: \$

Teen Fit

Group and individual exercises. Learn proper techniques and healthy eating habits. Parent/Guardian permission required. Min 2/Max 4.

Age: 13-17 9134.WNA
 Tue Jan 6-Feb 10 6:00-7:00pm
 Registration Deadline: Dec 30
 Resident Fee: \$10; Non-Resident: \$12

Fitness Challenge

The challenge is simple...participate in our various fitness classes or workout in the Fitness Center and earn points. The individual with the most points at the end of the month will receive a special prize. Challenge begins January 2. We will meet January 27 and February 24 at 6:30pm to tally points. The final day, March 31, we will determine a winner. Light refreshments will be provided. We will also discuss exercise strategies and success stories. Min 4/Max 100.

Age: 18+ 9127.WNA
 Mon-Fri Jan 2-Mar 31 Center hours
 Registration Fee: FREE

Teen Fitness Challenge

That's right we have one for teens, too! Min 4/Max 100.

Age: 13-17 9128.WNA
 Mon-Fri Jan 2-Mar 31 Center hours
 Registration Fee: FREE



Wednesday Wii Workouts

Drop-in Wii Workouts two times a day each Wednesday! Play games while working out. Min 2/Max 6

Age: All
 9184.001 Wed Jan 7-Mar 25 9:00-10:00am
 9184.002 Wed Jan 7-Mar 25 6:00-7:00pm
 Registration Fee: FREE

Yoga for Heart Health

Class is geared toward all levels and focuses on classic Yoga poses. This class is designed to increase flexibility, strength, and heart health. Sponsored by Suburban Hospital and NIH.

Age: 18+ 9087.WNA
 Thu Jan 8-Mar 26 10:15-11:15AM
 Resident Fee: \$10; Non-Resident: \$12

Sports Programs

Adult Pool Tournament

Standard pool rules apply. Awards presented to first and second place. This will be a single elimination tournament. Min 5/Max 15.

Age: 18 +
 9280.001 Mon Jan 12 7:00-9:00pm
 9280.002 Mon Feb 9 7:00-9:00pm
 9280.003 Mon Mar 23 7:00-9:00pm
 Registration Deadline: One week prior to start
 Resident Fee: \$1; Non-Resident: \$2



Tae Kwon Do

Learn the art of martial arts from 5th Degree Black Belt Michael Norwood, Sr. Benefits include exercise, strength building, and self discipline. Fees will be prorated for mid-season registration. \$15 discount for second child or other immediate family member. Min 4/Max 20.

Intermediate Juniors & Adults

Age: 6+ 9059.WNA
 Tue & Wed Jan 13-Apr 1
 Tue, 7:00-7:50pm Wed, 8:00-8:50pm
 Registration Fee: \$150; Non-Resident: \$155

Advanced Juniors & Adults

Age: 6+ 9055.WNA
 Tue/Wed Jan 13-Apr 1 8:00-8:50pm
 Registration Fee: \$150; Non-Resident: \$155

Beginners

Age: 7+ 9053.WNA
 Wed & Sat Jan 14-Apr 4
 Wed, 7:00-7:50pm Sat, 11:00-11:50am
 Registration Fee: \$150; Non-Resident: \$155

Little Dragons

Age: 5-6 9207.WNA
 Sat Jan 17-Apr 4 10:30-11:00am
 Resident Fee: \$75; Non-Resident: \$80

Easter Eggstravaganza



Enjoy a puppet show followed by our annual egg hunt. Get your picture taken with the Easter Bunny for \$3. Enter our Easter coloring contest. Stop by the Center to pick up your coloring page beginning March 16. Be sure to return your page on the day of the event for judging.

Age: 1-11 9020.WNA
Sat Apr 4 10:00-11:30am
 Registration Deadline: One week prior
 Resident Fee: \$3 in advance/\$5 at door;
 Non-Resident: \$5 in advance/\$7 at door

Horseshoe Tournament

Join us for an evening of pitching horseshoes. Register as a pair or we can pair you up. Award presented to first place team. Min 6/Max 12.

Age: 18+ 9093.WNA
 Fri Mar 20 6:00-8:00pm
 Registration Deadline: Mar 13
 Resident Fee: \$2; Non-Resident: \$3

Aquafina MLB Pitch, Hit & Run Competition

Aquafina MLB Pitch, Hit & Run is a free skill competition that allows kids to showcase pitching, hitting, and running abilities. Winners can advance through four levels of competition to the National Finals at the MLB All-Star Game! Call for more information 301-246-9612. Min 8/Max 40.

Age: 7-14 9027.SNA
 Sat Apr 18 Noon-2:00pm
 Registration Deadline: Apr 9
 Registration Fee: FREE

Adult Pool League

Age: 18 + 9088.000
 Wed/Fri Ongoing 7:00-9:00pm
 Registration Fee: FREE

Family Fun Nights

Family Game Night

Play classic board games or try something new. Compete against other families for bragging rights. Games and light refreshments provided. All children must be accompanied by an adult.

Age: All 9401.000
 Wed Ongoing 6:30-8:30pm
 Registration Fee: FREE

NCC Cinema

Join us for family fun night at the Center's very own movie theater. ...complete with projector and screen. Refreshments are available for purchase or bring your own. All children must be accompanied by a paying adult. Min 5/Max 100.

Age: All
 9140.001 Fri Jan 30 6:30-8:30pm
 9140.002 Fri Feb 13 6:30-8:30pm
 9140.003 Fri Mar 13 6:30-8:30pm
 Registration Deadline: One week Prior
 Resident Fee: \$1 in advance/\$2 at door;
 Non-Resident: \$2 in advance/\$3 at door

Holiday Special Events

New Year's Party

Dance the night away with your friends. Live local teen band will keep the party going. Refreshments will be provided. Min 20/Max 100.

Age: 13-17 9013.WNA
 Fri Jan 2 7:00-9:00pm
 Resident Fee: \$3 in advance/\$5 at the door;
 Non-Resident: \$5 in advance/\$7 at the door

Youth Valentine's Dance

Join us for some Valentine's Day fun with dance music, special games, and goodies. DJ Rockin' Roger will be on hand to entertain all of the young lovebirds. Have your picture taken with your sweetheart, best friend, siblings, or by yourself for \$3.

Age: 1-12 9010.WNA
 Fri Feb 6 7:00-9:00pm
 Resident Fee: \$3 in advance/\$5 at the door;
 Non-Resident: \$5 in advance/\$7 at the door

Daddy & Daughter Valentine’s Brunch

Daddies, bring your darling daughters to the Center for a lovely Saturday brunch. Fee is for one daddy and one daughter; additional daughters for \$3. Min 4/Max 12

Age: 1-12 9222.WNA
 Sat Feb 7 11:00am-1:00pm
 Registration Deadline: Jan 30
 Resident Fee: \$8; Non-Resident: \$10

Valentine’s Day Party

Join the Center and Nanjemoy Head Start for a Valentine’s Day Party. Play games, have treats, and of course, exchange valentine cards. Joe Dungan, of Southern Marylanders Square Dance Club, will provide line and square dancing instruction. Reservations required for lunch.

Age: All 9283.WNA
 Thu Feb 12 10:00-11:00am
 Registration Deadline: Feb 5
 Lunch Fee: \$4.50; Age 60+ by donation

Shamrock Hunt

Shamrocks will be hidden March 2-17. All found shamrocks will be placed in the *Pot of Gold* for the grand prize drawing March 17.

Age: All 9232.WNA
 Mon-Fri Mar 2-17 Center Hours
 Registration Fee: FREE

St. Patrick’s Day Party

Join the Center and Nanjemoy Head Start for a St. Patrick’s Day Party. Don’t forget to wear your GREEN. Reservations required for lunch.

Age: All 9284.WNA
 Tue Mar 17 10:00-11:30am
 Lunch Fee: \$4.50; Age 60+ by donation

Easter Egg Hunt

The Easter Bunny has come early and left some eggs. They are hidden all over the Center. Search around March 23-April 9. All found eggs will be placed in the basket for the grand prize drawing April 9.

Age: All 9232.WNA
 Mon-Fri Mar 23-Apr 9 Center Hours
 Registration Fee: FREE

Special Events

Schools Out Fun Days

Spend the whole day or just a few hours at the Center having fun! All day participants, please bring a lunch and snack. Min 6/Max 15.

Age: 6-12
 9115.001 Fri Jan 2 8:30am-4:30pm
 9115.002 Fri Jan 23 8:30am-4:30pm
 9115.003 Wed Mar 4 8:30am-4:30pm
 9115.004 Mon Apr 13 8:30am-4:30pm
 Registration Deadline: one week prior
 Resident Fee: \$10; Non-Resident: \$12

Patuxent Partners Bluegrass Concert & Spaghetti Dinner

Enjoy a night of great bluegrass and food. Since 1975, the Patuxent Partners have been entertaining with their “exciting brand of bluegrass”. Enjoy a delicious spaghetti dinner before the show sponsored by Nanjemoy Senior Center Council. Dinner will be served 5:30-6:30pm. Doors open at 5:00pm. This program is sponsored in part by the Maryland State Arts Council and the Charles County Arts Alliance.

Age: All 9231.WNA
 Sat Jan 31 5:30-9:00pm
 Resident Fee: \$15 advance/\$20 at the door
 Non-Resident: \$20 advance/\$25 at door

Black History Presentation: African American Heritage Society

Join Nanjemoy Community Center and Senior Center, and the African American Heritage Society for an exciting and informative Black History presentation. Nanjemoy Historical Figures will be discussed.

Age: All 9026.WNA
 Fri Feb 6 10:00am
 Registration Fee: FREE

Pancake Breakfast

It’s Pancake Tuesday! Join us for a pancake breakfast and participate in some trivia to win some Mardi Gras beads. Person with the most beads wins a prize!

Age: All 9060.WNA
 Tue Feb 24 9:00-10:30am
 Registration deadline: Feb 17
 Registration Fee: \$5

Pizza Party

Tired of hearing “what’s for dinner?” Join us for dinner: pizza, a drink, and dessert included. All children must be accompanied by an adult. Preregistration required. Min 4/Max 20.

Age: ALL 9274.WNA
 Mon Mar 9 6:00-7:30pm
 Registration Deadline: Mar 2
 Resident Fee: \$3; Non-Resident: \$5

Spring Fling

Kick off the first day of spring with Nanjemoy Community Center and Senior Center as we host a spring concert and luncheon. The Lackey High School Choir and Head Start children will perform for your listening pleasure. Reservations required for lunch.

Age: All 9278.WNA
 Thu Mar 19 10:30-12:00
 Registration Deadline: Mar 16
 Resident Fee: Lunch: \$4.50; 60+ by donation

“Old Time” Western Dance Party

Put on the cowboy hat and dust off those boots...there’s a hoe down at the Center. Join Joe Dungan, Southern Marylanders Square Dance Club, for Country Western dancing. Basic line and square dancing covered. Light refreshments served.

Ages: 18 + 9172.WNA
 Fri Mar 27 7:00-9:00pm
 Registration Deadline: Mar 18
 Resident Fee: \$5; Non-Resident: \$8

Egg Drop Crash Survivability Contest

The object of the contest is to design a container in which a raw egg can survive a fall. Stop by the Center to pick up a rule sheet and entry form. Min 4/Max 30.

Age: 12-18 9268.WNA
 Sat Mar 28 11:00-12:30pm
 Registration Deadline: Feb 9
 Registration Fee: FREE

Spring Break Camp

Join us for spring break fun. Play games, activities, arts and crafts, sports, and more! We’ll also have special guests. Please bring a bag lunch and snack everyday. Min 6/Max 20.

Age: 6-12 9286.WNA
 Mon-Fri Apr 6-9 8:30am-4:30pm
 Registration Deadline: Apr 1
 Resident Fee: \$50/week; Non-Resident: \$

Charles County Heritage Photo Scavenger Hunt

Celebrate Charles County’s vast beauty, places of interest, and history by taking your family on a Photo Scavenger Hunt. Pick up the list March 2-9. All photos will be reviewed Tuesday, April 14, 6:30pm. Any entries received after 6:45pm will not be eligible for the contest. Photos may be presented printed or on CD, and must be original photos taken by participants. Refreshments provided. Family/Individual with the most correct or accurate photos will win a prize. In the event of a tie, winner will be chosen at random from eligible entries.

Age: All 9279.WNA
 Tue Apr 14 6:30-7:30pm
 Registration Deadline: Mar 9
 Registration Fee: FREE

Workshops & Seminars

Speed Stacking Workshop & Competition

Learn basic stacks and participate in fun competitions. Really like speed stacking? We’ll also discuss starting our own club. Min 4/Max 12.

Age: 6 + 9078.SNA
 Fri Mar 6 6:00-7:30pm
 Registration Deadline: Mar 2
 Registration Fee: FREE

SPECIAL OLYMPICS • Charles County



Special Olympics Maryland and the Division of Parks & Recreation, in a joint partnership, offer a year-round program for athletic conditioning, training, and competition for individuals with intellectual disabilities who are at least 8 years of age. There is no maximum age limit. All Special Olympics sports activities are free of charge to athletes. Currently, Special Olympics Charles County offers a chance to compete in 16 Olympic-style sports throughout the year.

For more information, please visit our web page at www.charlescounty.org/specialolympics.

Coaching Opportunities

Coaches must be 18 or older and are subject to a criminal background investigation. Training is offered. If interested, please contact Marilyn Borrell at 301-743-3618.

Unified Sports®

Unified Sports® is a unique opportunity for traditional Special Olympics athletes and partners (without intellectual disabilities, with similar ability levels) to train and compete as a team against other Unified Sports® teams. We currently offer this opportunity in basketball, volleyball, ten-pin bowling, golf, and athletics.

Upcoming March Registrations

Bocce 7519.009
Track & Field.....7504.009

And Don't Forget... Spring Games • May 2



Special Olympics Bowling

Ten-Pin Traditional & Unified®

Bowling will be practicing in anticipation of representing Charles County at the 2009 Special Olympics Maryland Bowling Competition February 14. All skill levels are welcome.

Age: 8+ & Unified® Partners 7503.009
Sun Dec 7-Feb 1 9:30am-Noon
Site: AMF Waldorf Lanes

Special Olympics Basketball

5v5 Traditional

Age: 8+ 7507.009
Tue Dec 2-Mar 3 6:00-7:00pm
Site: F.B. Gwynn Center, La Plata

Basketball Unified®

Age: 8+ & Unified Partners® 7501.009
Mon Jan 5-Mar 2 6:00-7:00pm
Site: Hanson Community Center, Waldorf

Special Olympics Ski Team

Medicals need to be updated and on file before beginning training. There will be a weekend ski trip. No practice Dec 24.

Age: 8+
Alpine 7506.109
Nordic 7506.209
Snowshoes 7506.309
Wed Dec 3-Feb 18 6:00-7:00pm
Site: F.B. Gwynn Center, La Plata

Special Olympics Swimming

Age: 8+ 7502.009
Sat Mar 21-May 30
Swim Team: 4:00-5:00pm
Beginners: 5:00-5:45pm
Site: North Point Indoor Pool, Waldorf

Swim Meet at Lackey Sat, May 2

Special Populations

The Special Populations program area offers a variety of recreational classes and programs designed to meet the needs of individuals with intellectual disabilities. Not all programs in this area will meet the needs and interests of all residents with special needs. We are currently developing programs for those with physical disabilities such as arthritis, minor injury rehabilitations and more.

New! Special Populations Drop-In Volleyball

Age: 18+ 0950.000
Mon Starts Jan 5 7:00-8:00pm
Resident Fee: \$3; Non-Resident: \$4
Site: Henson Community Center, Indian Head

Special Populations Dances

Get into the spirit and dance the night away with your loved ones. And what a great way to work in some physical activity. Not sure how to dance? We'll teach you. Individuals in wheelchairs are welcome to participate in this program. Please wear comfortable clothing and flat-bottomed shoes. Light refreshments will be provided. Min8/Max 50.

Pop Sock Hop Night

Age: 18+ 5901.HE1
Fri Jan 30 6:30-8:30pm
Registration Deadline: Jan 23
Resident Fee: \$5; Non-Resident \$6
Site: Henson Community Center, Bryans Road

Sweetheart's Dance

Age: 18+ 5902.WHE
Fri Feb 13 6:30-8:30pm
Registration Deadline: Feb 10
Resident Fee: \$5; Non-Resident \$6
Site: Hanson Community Center, Waldorf

St. Patricks Day Celebration

Age: 18+ 5901.HE3
Fri Mar 20 6:30-8:30pm
Registration Deadline: Mar 13
Resident Fee: \$5; Non-Resident \$6
Site: Henson Community Center, Bryans Road

Program/Class Registration Policies & Procedures

Standard Enrollment

Payment is due at the time of registration. Checks and money orders must specify the program by code and must be for the exact amount, payable to:

Charles County Commissioners

Checks must include the current address, telephone number, and drivers license number with expiration. Information must be included for the person making payment.

Cash payment is only accepted at the main office at 8190 Port Tobacco Road, Elite Gymnastics, Capital Clubhouse, and the Nanjemoy Community Center. Except for limited programs/activities, cash is not accepted at our Community Centers or the indoor pools.

MasterCard and Visa payments are accepted by mail, phone, or via fax at all Community Centers and the Parks & Recreation office located at the Department of Community Services building in Port Tobacco. See page 6 for a listing of Centers in your area with telephone numbers and addresses.

Mail-in payments with a signed registration form are only accepted at: (must include registration form)

Dept. of Community Services Building

Parks & Recreation Registration Office
8190 Port Tobacco Road
Port Tobacco, MD 20677

Refund Policies

All requests for refunds must be received, in writing, **seven working days prior** to the start of a program. Fax requests for refunds are accepted at 301-934-5624.

After the program has begun, a prorated refund, based on participation, may be approved if requested in writing with medical verification received prior to the end of the program.

No refunds will be considered after a program has ended.

For select sports programs, league rules determine program refund amount.

Overnight trips may not qualify for a refund.

Approved refunds will be assessed a \$10 administrative fee per child, per session regardless of circumstances.

Late fees are non-refundable.

Returned Check Fees

Checks returned for insufficient funds or other reason will incur a fee of up to, but not more than, \$35 for each occurrence. We do not re-deposit returned checks; only cash or money order accepted for face value of check, plus above-mentioned return check fee. Persons who fail to rectify this obligation will be denied participation in all Charles County Government programs.

Online registration is unavailable at this time.

We apologize for any inconvenience.



Department of Community Services

8190 Port Tobacco Road, Port Tobacco. Registrations for programs offered throughout this Guide are currently being accepted at the Parks & Recreation Office located at the Department of Community Services building at the above address.

301-934-9305 • 301-870-3388

Check out *The Latest SCOOP!*

Senior Center class and program listings can be found in the Latest SCOOP, a monthly senior citizen publication available online at www.charlescounty.org/cs.

And don't forget, you can also pick up a copy of the SCOOP at each of the four Senior Centers and the Department of Community Services in Port Tobacco.



Program Registration Form • Please Print | One Form Per Participant

Registration for Elite Gymnastics and Capital Clubhouse programs is accepted only at those facilities.

This form may not be used for summer camps (except sports). Please call 301-934-9305 or 301-870-3388 for a camp registration packet, or you may download your packet at www.charlescounty.org



This section must be completed—If participant is a minor, this section should list parent or guardian information.

Name	Phone #'s	Home	Work	Cell
Mailing Address			City	State
COUNTY:		Emergency Contact Name	Emergency Contact Phone	

Participant/Child's Information		Age	Date of Birth	Sex (circle)	M	F
First Name			Last Name			
Special Health Conditions			School Currently Attending			

Youth Sports League Registration			
Program Title			
Code			
Community Ctr		Grade	
Height	Weight		
Experience in years (Please provide number of years child has played this sport.)			
I/my child will abide by the Code of Conduct. (must initial)			Initials
Please include proof of age in the form of a birth certificate, passport, or baptismal certificate if registering for the first time. First-time registrations received without proof of age will be returned.			
Amount/Fee Due \$ _____ Please add \$15 late fee if registering after the deadline.			

No confirmations will be sent. You may assume you are registered unless otherwise contacted. Charles County Government is not responsible for program cancellations due to Charles County Public Schools programming. I agree to participate or to allow my child to participate in these programs knowing that safety precautions will be taken but realizing that the Charles County Government does not have accident insurance for participants. I do hereby release and hold harmless Charles County, Maryland, its officials, employees, instructors, and volunteers from any and all liabilities arising from any injuries that might occur during the supervised programs. I also authorize the Division of Parks & Recreation to take photographs of me/my child for promotional and/or educational purposes. I hereby state and declare that this information is freely, willingly, and voluntarily made.

Registration for Trips, Sports Camps, Classes & Programs	
1	Title
	Date
	Code
	Amount
	Trip P/U
2	Title
	Date
	Code
	Amount
	Trip P/U
3	Title
	Date
	Code
	Amount
	Trip P/U

League Shirt Size Selection	
Please CIRCLE the proper shirt size if you are registering for the youth basketball leagues: Selecting the proper shirt size is the responsibility of the parent/guardian.	
SIZES MAY RUN SMALL.	
Youth Size:	10-12 14-16
Adult Sizes:	S M L XL Other: _____

Forms without signatures will be returned.

Your signature acknowledges that you have read and understand the above.

Signature _____
Date _____

**Make checks payable to:
Charles County Commissioners**



Would you like to receive e-mail updates about upcoming programs, registration information, events, and more?	
Yes _____	No _____ E-mail address: _____

OFFICE USE ONLY		Proof of age verified: Yes _____ No _____ N/A _____										
OFFICE USE ONLY	Cash	Check	M/O	M/C	Visa	Staff Initials	Reg #		W/I	M	PH	FX
Check/Card Name			Total	\$		Date Entered	HA	HE	MA	NCC	PI	SM
Check/Card #						Card Exp.	SO	ST	WA	DCS	LK	NP

Have the kids been dreaming about an extra special birthday party?

We have the Perfect... Birthday Solutions!

THREE Party Options Available!

Capital Clubhouse Recreation Center

Basic & Combo parties available for ice skating, indoor court sports, and rock climbing!

All packages include one hour room rental. Designated party area includes tables, chairs, paper products, drinks, pizza, and party favor for each child. We also provide invitations. Ice parties include skate rental and a one hour skating session. Sports parties include one hour on dry court with activities.

Contact the Clubhouse for details: 301-932-4348.

Number of Children	Basic Party Fee	Combo Party Fee	Deposit
1-10	\$170 \$15 ea add'l child	\$250 \$20 ea add'l child	\$75
Rates shown are for residents. If non-resident, please add \$15.			

Jumpin' Gymnastics Parties

Have your next birthday party at Elite Gymnastics & Recreation Center in Waldorf!

One hour of gym activities, group games, and relays. A 1/2 hour of birthday refreshments and gifts that you provide in our spacious party room. We provide the paper products, ice cream, drinks, goodie bags, and invitations. You must supply the cake. All children must be age 4 or older. Weekday parties available for age 1-6.

Contact Elite for details: 301-705-6557, or 301-870-7938.

Guests	Fee	Deposit
1-12 children	\$145	\$72.50
13-25 children	\$185	\$92.50
Rates shown are for residents. If non-resident, please add \$5.		

Big Splash Birthday Parties

The Indoor Community Pools at Lackey and North Point offer Pizza Parties with a Splash!

All parties include two hours of party FUN! (one hour in the pool). Invitations for your event are included in the prices shown. Each child must return the signed permission statement that is included in the invitation. The designated party area includes tables, chairs, paper products, drinks, pizza, and goodie bags for each child. Parent/Guardian is responsible for providing the birthday cake.

Parties are offered for children age 6-12 at Lackey; and children age 8-12 at North Point. Guests age 6 and younger must be accompanied by a supervising adult. Individuals not on the birthday guest list, including parents, will be required to pay daily admission price if they expect to use the pool.

For available dates or more information, please call the Aquatics offices at Lackey: 301-743-2470 or 301-753-6003, North Point: 301-934-7475.

Guests	Fee	Deposit
1-10 children	\$140	\$70
11-20 children	\$180	\$90
Rates shown are for residents. If non-resident, please add \$5.		

Ready to Get Started?

Stop by or give us a call today!

We offer birthday packages sure to please everyone!

A 50% non-refundable deposit is required for all parties. The deposit must be paid the day of the reservation to book your requested party date and time. The remaining balance is required no later than the day of the party. Pay using cash, check, MasterCard, or Visa. Party reservations must be made in person at least two weeks in advance of the party date.

