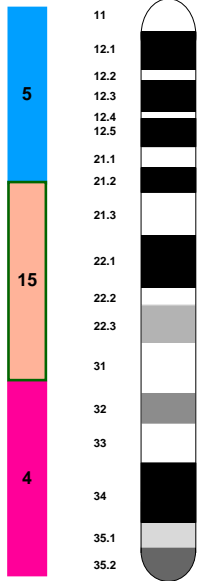


CFA 3

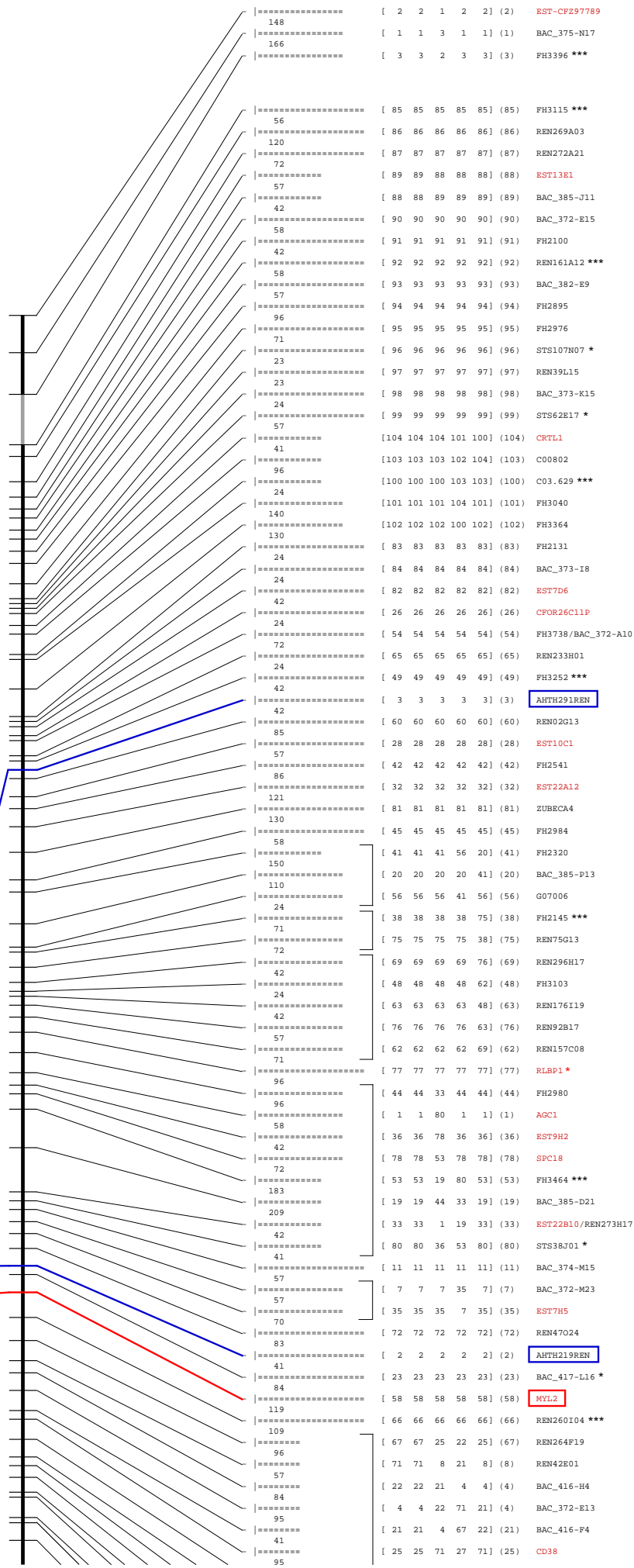


H291

H219

MYL2

0 20 40 60 80 100 %



5q21.1 [102,6]

5q14.3 [83,2]

5q13.3 [74,9]

15q13.1 [22,8]

15q26.3 [95,7]

15q26.1 [83,1]

15q26.1 [82,7]

15q26.1 [83,5]

15q25.3 [78,3]

15q25.2 [76,7]

4p16.1 [6,8]

4p15.32 [15,7]

Size	Scale
105 Mb	1 Mb = 82 U
8602 U	1 U = 12 Kb

	95	[8 8 67 8 67] (8)	BAC_372-O21	
	83	[27 27 27 25 27] (27)	CPH19	
	41	[68 68 57 40 57] (68)	REN273N19	
	56	[40 40 68 68 68] (40)	FH2316 ***	
	70	[57 57 40 57 40] (57)	HUEST-D25247	4p15.33 [13,8]
	23	[17 17 17 17 17] (17)	BAC_382-A18	
	97	[31 31 31 31 31] (31)	EST1584	4p16.1 [10,4]
	24	[43 43 43 43 43] (43)	FH2858	
	84	[18 61 18 73 18] (18)	BAC_382-A8	
	126	[61 18 61 34 61] (61)	REN153P03	
	71	[34 34 73 61 34] (34)	EST25E5	4p14 [40,8]
	57	[73 73 34 18 73] (73)	REN64M14	
	72	[30 64 30 30 64] (30)	EST15A9/EST12C4	4p14 [39,5/39,7]
	85	[64 30 64 64 30] (64)	REN216N05	
	57	[70 70 12 70 70] (70)	REN319U10	
	97	[52 52 52 52 52] (52)	REN249K02/FH3377 ***	
	96	[9 9 9 9 12] (9)	BAC_373-M7	
	95	[15 12 70 12 9] (12)	BAC_375-A20	
	71	[16 15 15 16 16] (16)	BAC_381-N2	
	96	[12 16 16 15 15] (15)	BAC_381-N10	
	105	[37 55 55 55 55] (55)	FH4076	
	80	[55 14 14 10 14] (14)	BAC_381-A16 *	
	176	[14 79 47 47 47] (47)	FH3068	
	85	[79 47 79 14 79] (79)	STS181A21 *	
	41	[47 10 24 46 10] (10)	BAC_374-E17	
	71	[10 46 51 37 46] (46)	FH2993	
	130	[46 37 37 51 37] (37)	FH2107	
	42	[51 51 10 24 51] (51)	FH3373	
	73	[24 24 46 79 24] (24)	CO3.445	
	131	[6 29 29 29 29] (29)	EST10C11-B	4p15.2 [25,3]
	96	[29 6 6 6 6] (6)	BAC_372-G5	
	118	[50 50 50 50 50] (50)	FH3259	
	180	[74 74 74 74 74] (74)	REN73P04	
	60	[39 39 39 39 39] (39)	FH2302 ***	
	168	[5 5 5 5 5] (5)	BAC_372-G17	
	103	[13 13 13 13 13] (13)	BAC_376-N15	
	170	[59 59 59 59 59] (59)	PDE6B	4p16.3 [0,6]