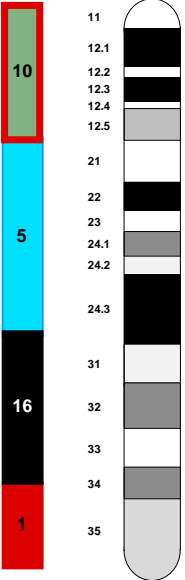


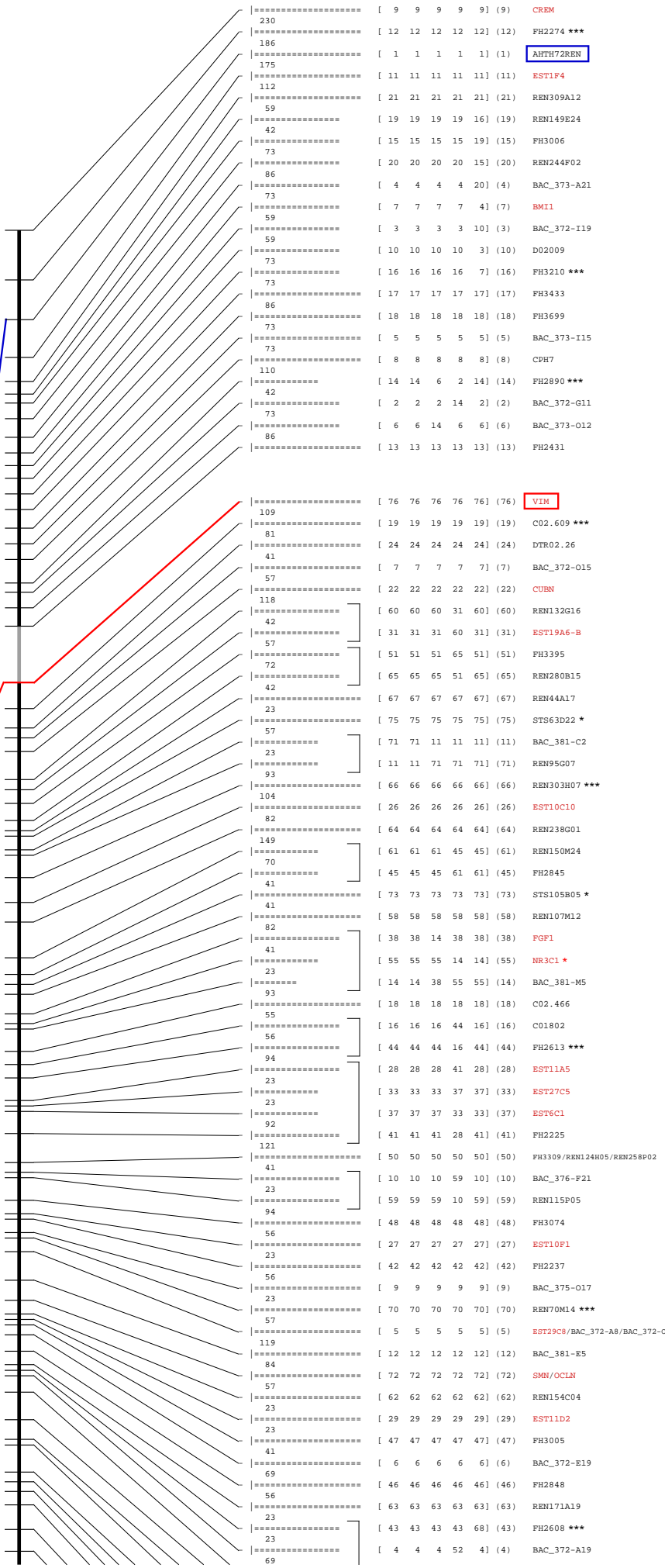
CFA 2



VIM
H72

H255

0 20 40 60 80 100 %



10p11.21 [35,1]
10p12.1 [27,2]
10p12.2 [22,3]
10p13 [17,2]
10p13 [17,0]
10p13 [13,3]
10p15.2 [3,8]

5q31.3 [142,6]
5q31.3 [143,3]
5q32 [148,1]
5q11.2 [55,9]
5q11.2 [56,1]
5q12.2 [63,5]
5q12.3 [66,4]
5q13.2 [70,5/70,4]
5q13.2 [72,4]

Accession	Strain	Support	Gene
230	[9 9 9 9 9] (9)		CREM
186	[12 12 12 12 12] (12)		FH2274 ***
175	[1 1 1 1 1] (1)		AHTH72REN
112	[11 11 11 11 11] (11)		EST1F4
59	[21 21 21 21 21] (21)		REN309A12
42	[19 19 19 19 16] (19)		REN149E24
73	[15 15 15 15 19] (15)		FH3006
96	[20 20 20 20 15] (20)		REN244F02
73	[4 4 4 4 20] (4)		BAC_373-A21
59	[7 7 7 7 4] (7)		BM11
59	[3 3 3 3 10] (3)		BAC_372-I19
73	[10 10 10 10 3] (10)		D02009
73	[16 16 16 16 7] (16)		FH3210 ***
86	[17 17 17 17 17] (17)		FH3433
73	[18 18 18 18 18] (18)		FH3699
73	[5 5 5 5 5] (5)		BAC_373-I15
110	[8 8 8 8 8] (8)		CPH7
42	[14 14 6 2 14] (14)		FH2890 ***
73	[2 2 2 14 2] (2)		BAC_372-G11
86	[6 6 14 6 6] (6)		BAC_373-O12
109	[76 76 76 76 76] (76)		VIM
81	[19 19 19 19 19] (19)		CO2.609 ***
41	[24 24 24 24 24] (24)		DTR02.26
57	[7 7 7 7 7] (7)		BAC_372-O15
118	[22 22 22 22 22] (22)		CUBN
42	[60 60 60 31 60] (60)		REN132G16
57	[31 31 31 60 31] (31)		EST19A6-B
72	[51 51 51 65 51] (51)		FH3395
42	[65 65 65 51 65] (65)		REN280B15
23	[67 67 67 67 67] (67)		REN44A17
57	[75 75 75 75 75] (75)		STS63D22 *
23	[71 71 11 11 11] (11)		BAC_381-C2
93	[11 11 71 71 71] (71)		REN95G07
104	[66 66 66 66 66] (66)		REN303H07 ***
82	[26 26 26 26 26] (26)		EST10C10
149	[64 64 64 64 64] (64)		REN238G01
70	[61 61 61 45 45] (61)		REN150M24
41	[45 45 45 61 61] (45)		FH2845
41	[73 73 73 73 73] (73)		STS105B05 *
82	[58 58 58 58 58] (58)		REN107M12
41	[38 38 14 38 38] (38)		FGF1
23	[55 55 55 14 14] (55)		NR3C1 *
93	[14 14 38 55 55] (14)		BAC_381-M5
55	[18 18 18 18 18] (18)		CO2.466
56	[16 16 16 44 16] (16)		CO1802
94	[44 44 44 16 44] (44)		FH2613 ***
23	[28 28 28 41 28] (28)		EST11A5
23	[33 33 33 37 37] (33)		EST27C5
92	[37 37 37 33 37] (37)		EST6C1
121	[41 41 41 28 41] (41)		FH2225
41	[50 50 50 50 50] (50)		FH3309/REN124H05/REN258P02
23	[10 10 10 59 10] (10)		BAC_376-F21
94	[59 59 59 10 59] (59)		REN115P05
56	[48 48 48 48 48] (48)		FH3074
23	[27 27 27 27 27] (27)		EST10F1
56	[42 42 42 42 42] (42)		FH2237
23	[9 9 9 9 9] (9)		BAC_375-O17
57	[70 70 70 70 70] (70)		REN70M14 ***
119	[5 5 5 5 5] (5)		EST29C8/BAC_372-A8/BAC_372-O7
84	[12 12 12 12 12] (12)		BAC_381-E5
57	[72 72 72 72 72] (72)		SMN/OCLN
23	[62 62 62 62 62] (62)		REN154C04
23	[29 29 29 29 29] (29)		EST11D2
41	[47 47 47 47 47] (47)		FH3005
69	[6 6 6 6 6] (6)		BAC_372-E19
56	[46 46 46 46 46] (46)		FH2848
23	[63 63 63 63 63] (63)		REN171A19
23	[43 43 43 43 68] (43)		FH2608 ***
69	[4 4 4 52 4] (4)		BAC_372-A19

Size	Scale
99 Mb	1 Mb = 77 U
7608 U	1 U = 12 Kb

