

Line #	Coordinates	Gene/Label	Chromosome	Position
186	[138 138 138 138 138] (138)	REN285G14		
79	[66 66 66 141 66] (66)	FH3325 ***		
199	[141 141 141 66 141] (141)	REN303J04		
185	[41 41 41 41 41] (41)	BAC_385-M17		
72	[30 30 30 30 30] (30)	BAC_381-G24		
156	[125 125 125 125 125] (125)	REN138G03		
76	[3 3 3 3 3] (3)	BAC_372-E8		
91	[8 8 8 76 8] (8)	BAC_373-K23		
137	[76 76 76 8 76] (76)	FH3646		
184	[54 54 54 54 54] (54)	FH2663 ***		
60	[135 135 135 106 135] (135)	REN242N13		
51	[24 24 24 135 24] (24)	BAC_376-I21		
74	[106 106 106 24 106] (106)	FH2016		
87	[13 13 13 13 13] (13)	BAC_375-B21		
43	[69 69 69 69 69] (69)	FH3419		
100	[93 93 93 93 93] (93)	AHTK338		
169	[75 75 75 75 75] (75)	FH3603 ***		
97	[49 49 49 22 49] (49)	EST4E10		
109	[22 22 22 49 22] (22)	BAC_376-H17		
98	[87 87 87 87 87] (87)	STS189J17 *		
86	[44 44 44 44 44] (44)	EST15G8-B/REN276B08		
143	[109 109 109 109 109] (109)	FH2313		
125	[130 130 130 130 130] (130)	REN189I14		
58	[20 20 20 20 20] (20)	BAC_376-E19		
66	[137 137 137 137 137] (137)	REN280C08		
99	[60 60 60 60 60] (60)	FH3219		
80	[68 68 68 68 68] (68)	FH3413 ***		
73	[124 124 142 142 124] (124)	REN136G19		
109	[142 142 124 124 142] (142)	REN307D02		
42	[101 101 101 101 101] (101)	COL.673		
118	[26 26 26 26 26] (26)	BAC_380-F2		
131	[118 118 118 118 118] (118)	RAB2		
108	[95 95 95 95 95] (95)	MYB		
121	[50 50 50 50 50] (50)	EST4E11/REN135K06		
104	[36 36 36 36 36] (36)	BAC_382-A13		
42	[23 23 23 38 23] (23)	BAC_376-H19		
138	[38 38 38 23 38] (38)	BAC_382-K5		
146	[80 80 80 80 80] (80)	FH3922 ***		
107	[61 61 61 61 61] (61)	FH3225		
50	[51 51 51 51 51] (51)	EST7A6		
80	[70 70 70 70 70] (70)	FH3439		
67	[128 128 128 128 128] (128)	REN162B09		
73	[47 47 47 47 47] (47)	EST1F7		
138	[63 63 63 63 63] (63)	FH3300 ***		
131	[83 83 83 83 83] (83)	ESR1		
180	[99 99 99 99 99] (99)	COL.246		
152	[40 40 40 40 40] (40)	BAC_385-E7		
140	[28 28 28 28 28] (28)	BAC_381-F2		
80	[67 67 67 122 67] (67)	FH3370		
80	[122 122 122 67 122] (122)	REN112I02 ***		
105	[88 88 88 88 88] (88)	STS318L10 *		
79	[139 139 139 139 139] (139)	REN288J16		
65	[15 15 15 15 15] (15)	BAC_375-G16		
78	[114 114 114 114 114] (114)	HUEST-M13150		
124	[73 73 73 73 73] (73)	FH3583		
34	[74 74 74 74 74] (74)	FH3598		
34	[10 10 10 132 10] (10)	BAC_374-C5/DGN3		
72	[132 132 132 10 132] (132)	REN210H04		
24	[62 62 62 62 62] (62)	FH3284		
50	[81 81 81 81 81] (81)	FH3993		
43	[34 34 34 32 32] (34)	BAC_381-P10/BAC_385-I15		
97	[32 32 32 34 34] (32)	BAC_381-N24		
57	[43 43 43 43 43] (43)	BAC_385-O21		
77	[11 11 11 89 89] (11)	BAC_374-I3/CO1.424 ***		
145	[89 89 89 11 89] (89)	AHT107		
66	[117 117 136 136 136] (136)	REN256I19		
71	[136 136 117 117 117] (117)	PLN		
41	[98 102 98 102 102] (102)	C02509		
23	[102 98 102 98 98] (98)	COL.236		
71	[18 18 18 18 18] (18)	EST20H2/BAC_376-A13		
107	[6 6 6 6 6] (6)	BAC_373-E21		
95	[33 33 33 33 33] (33)	BAC_381-N4		
104	[100 100 100 100 100] (100)	COL.251 ***		

18q23 [73,2]

18q21.33 [59,7]

18q21.32 [56,8]

18q21.31 [54,7]

18q21.2 [53,0]

8q12.1 [61,4]

6q23.3 [135,3]

6q23.3 [135,1]

6q24.2 [144,0]

6q24.2 [145,0]

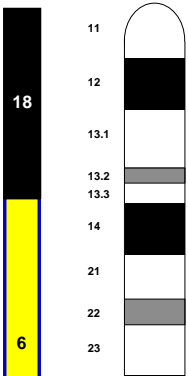
6q25.1 [152,2]

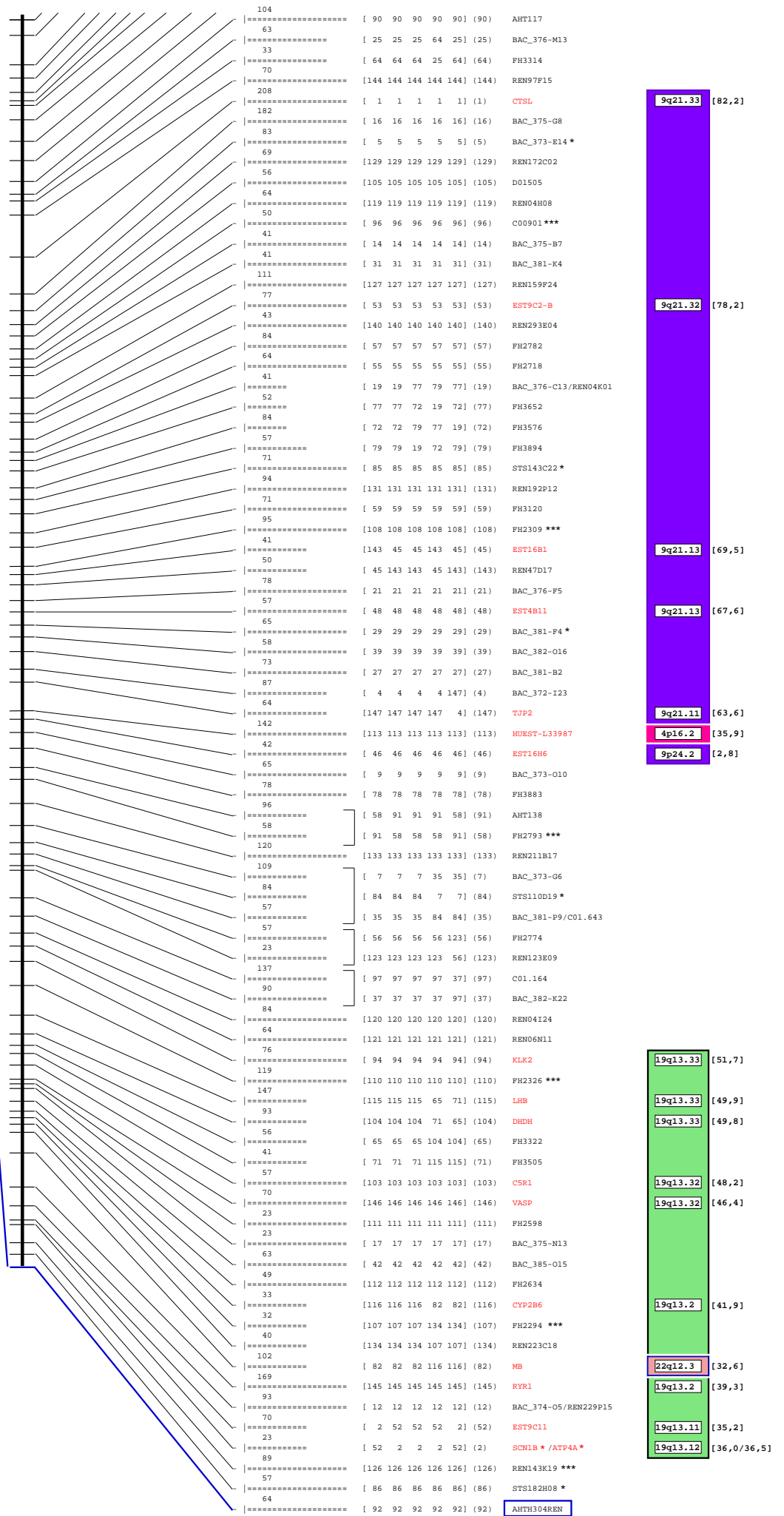
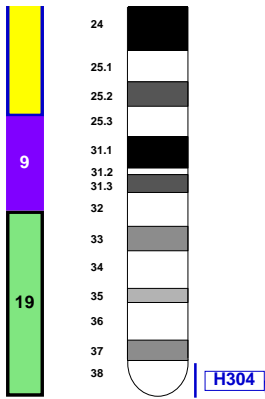
6q25.3 [160,2]

6q22.31 [118,9]

6q22.31 [121,6]

CFA 1





Size	Scale
137 Mb	1 Mb = 90 U
12353 U	1 U = 11 Kb