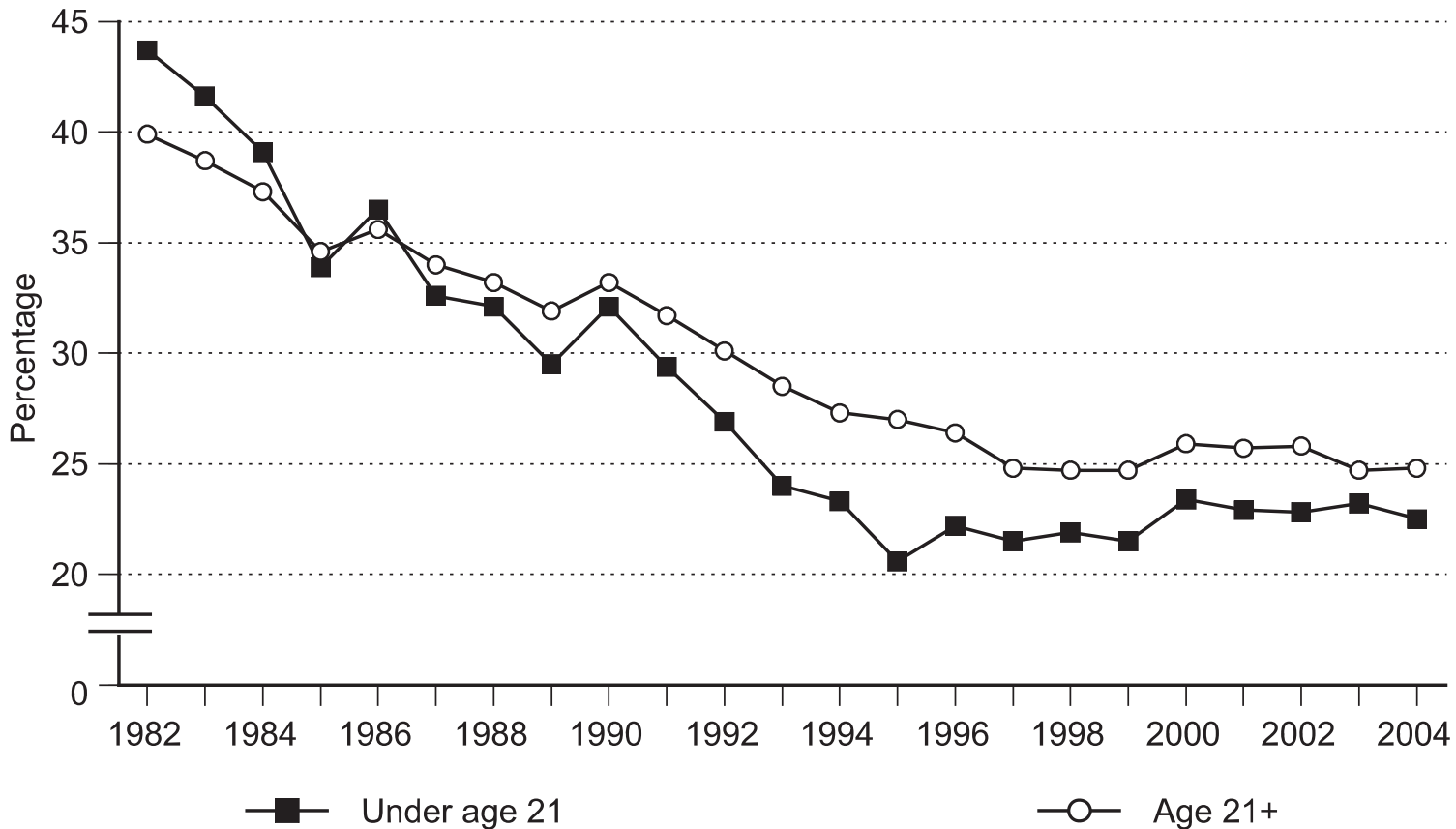


Percentage of alcohol involvement among young drivers ages 16 to 20 and drivers ages 21 and older in fatal traffic crashes, United States, 1982–2004



Source: Yi, H.; Chen, C.M.; and Williams, G.D. *Surveillance Report #76: Trends in Alcohol-Related Fatal Traffic Crashes, United States, 1977–2004*. Bethesda, MD: NIAAA, Division of Epidemiology and Prevention Research, Alcohol Epidemiologic Data System, August 2006, e-pub @ <http://pubs.niaaa.nih.gov/publications/surveillance76/fars04.htm>.

Prepared: September 2006