

Comparative Pathology And Biomedical Research Training Program

National Institutes of Health

U.S. Department of Health and Human Services



Opportunities for Training in Veterinary Pathology, Molecular Pathology, and Biomedical Research from NIH

Leading Veterinary Medicine's Next Contribution to the Public's Health

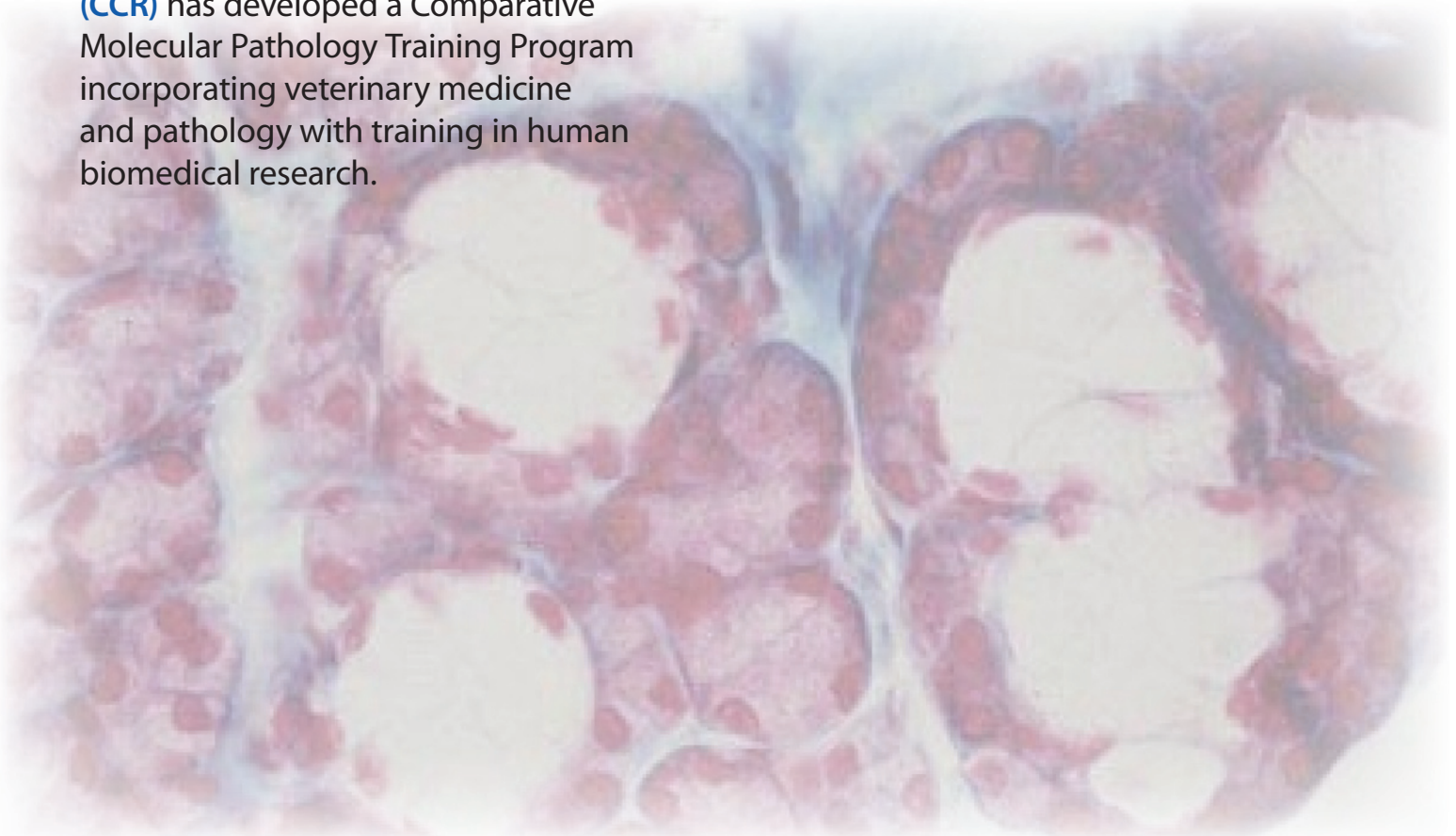
Today the concept of One Medicine is highlighting a call for increased integration of veterinary medicine among other biomedical scientific disciplines. Interdisciplinary training as a veterinary pathologist and comparative biomedical scientist sets the stage for a fulfilling career exploring challenges in detecting and understanding the biology of diseases.

The **National Cancer Institute (NCI), Center for Cancer Research (CCR)** has developed a Comparative Molecular Pathology Training Program incorporating veterinary medicine and pathology with training in human biomedical research.

Interdisciplinary training in:

- Veterinary pathology, including NHP and/or rodent pathology
- Human pathology
- Molecular biology
- Medical research

Training leads to a Ph.D. and eligibility for certification as a veterinary pathologist.



Participating Institutes:



National Cancer Institute



National Heart, Lung, and Blood Institute



National Institute of Allergy and Infectious Diseases



National Institute of Diabetes and Digestive and Kidney Diseases



Graduate Partnership Program Universities:

North Carolina State University

Program in Comparative Biomedical Sciences

Michigan State University

Program in Pathobiology and Diagnostic Investigation

University of Illinois

Program in Comparative Pathology

University of Maryland

Program in Veterinary Medical Sciences

Training support includes:

- Attractive stipend
- University tuition
- Health insurance
- Research project resources
- Allowance for relocation to NIH
- Other training support

Up to 5 years support in both the university (~2 years) and NIH (~3 years) phases of the program.



Applicants:

- Applicants must be US citizens or permanent residents with DVM/VMD from a recognized college
- Must have less than 5 years relevant postdoctoral experience
- Open to those initiating pathology training as well as current pathology residents from any recognized DVM program.

1. Apply on-line at:

<http://gpp.nih.gov/Applicants/ProspectiveStudents/>

2. Apply separately to each University Partnership Graduate School of interest for graduate admission and pathology training

Fellowships typically begin July 1

Careers in research, teaching, academia, product development, diagnostic pathology, tox path, disease surveillance, biodefense, others.

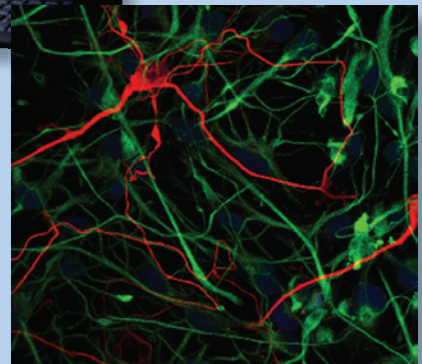
Educational Benefits:

Combines the unique training strengths from both leading university diagnostic pathology and graduate programs with training at the National Institutes of Health

- University courses and PhD guidance committee
- University and NIH training in veterinary pathology
- 8+ ACVP-certified NIH pathologists
- 6+ veterinary pathology trainees at NIH
- Interact with MD pathologists-in-training
- Core research technologies resources
- NIH Graduate Partnership Program student office
- National Cancer Institute molecular pathology training curriculum
- Research faculty and resources of the National Institutes of Health - NCI, NIAID, NIDDK, and NHLBI

Phenomenal basic, translational and clinical research opportunities allow for integration across classic disciplines, including:

- Digestive disease
- Renal diseases
- Cancer prevention
- Carcinogenesis
- Immunology
- Metastasis
- Molecular pathology
- Molecular targets
- Infectious diseases
- Autoimmunity
- Asthma
- Allergy
- Bioterrorism
- Emerging infections
- Lipid metabolism
- Cardiopulmonary disease
- Hematologic diseases
- Diabetes
- Endocrine disorders
- Nutrition
- Cardiac energetics
- Pathogenesis and animal models
- Vascular biology, disease and remodeling
- Cell, stem cell and developmental biology



<http://ccr.nci.nih.gov/resources/training/default.asp>

National Cancer Institute, Center for Cancer Research Partnership Directors

R. Mark Simpson, D.V.M., Ph.D.,
Diplomate A.C.V.P.
Molecular Pathology Unit
NCI Center for Cancer Research
Telephone: 301-435-6276
E-mail: ncimolpathol@mail.nih.gov

Jonathan S. Wiest, Ph.D.
Associate Director for Training
and Education
Office of the Director
NCI Center for Cancer Research
31 Center Drive, Room 4A 48
Bethesda, MD 20892
wiestj@mail.nih.gov



National Institutes of Health
Graduate Partnerships Program

DHHS, NIH, NCI, NHLBI, NIAID, and NIDDK
are Equal Opportunity Employers