



The National Children's Study

Vanguard Center in Duplin County, NC

November 2005

Barbara Entwisle

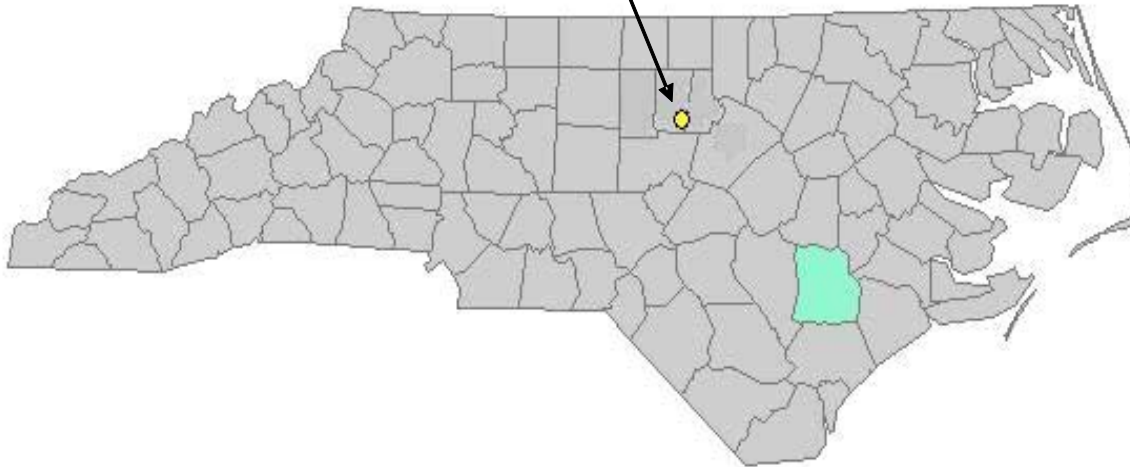
Carolina Population Center

University of North Carolina at Chapel Hill



Vanguard Location – Duplin County, NC

UNC 



Duplin County Tour



*Photo taken by Christopher W. Lyu, MPA,
Battelle/Centers for Public Health Research & Evaluation Duplin County Vanguard Center – University of North Carolina.*



Duplin County Tour



*Photo taken by Christopher W. Lyu, MPA,
Battelle/Centers for Public Health Research & Evaluation Duplin County Vanguard Center – University of North Carolina.*



Duplin County Tour



*Photo taken by Christopher W. Lyu, MPA,
Battelle/Centers for Public Health Research & Evaluation Duplin County Vanguard Center – University of North Carolina.*



Duplin County Tour



Chinquapin

*Photo taken by Christopher W. Lyu, MPA,
Battelle/Centers for Public Health Research & Evaluation Duplin County Vanguard Center – University of North Carolina.*



Duplin County Tour



Wallace

*Photo taken by Christopher W. Lyu, MPA,
Battelle/Centers for Public Health Research & Evaluation Duplin County Vanguard Center – University of North Carolina.*



Duplin County Tour



Duplin County Court House, Kenansville

Photo taken by Christopher W. Lyu, MPA,

Battelle/Centers for Public Health Research & Evaluation Duplin County Vanguard Center – University of North Carolina.



Duplin County Tour



Duplin County Hog Farm

Photo taken by Christopher W. Lyu, MPA,

Battelle/Centers for Public Health Research & Evaluation Duplin County Vanguard Center – University of North Carolina.



Duplin County Tour

WORLD'S LARGEST FRYING PAN

In Recognition of the Duplin County Poultry Industry

Designed and built in 1963 by Ramsey Feed Company of Rose Hill. Used during the first Rose Hill Poultry Jubilee



First Poultry Jubilee, 1963

October 19, 1963, honoring the poultry growers in the area. Continuing for almost two decades, the Rose Hill Jaycees used the frying pan in the annual celebration promoting the emerging poultry industry in the county and state. This celebration eventually gained statewide attention

and became the North Carolina Poultry Jubilee which continued for several years. Today the frying pan is used for community fundraising events, maintaining its long history as a unique and special symbol of the poultry industry benefitting the people of Rose Hill and the community at large.

WEIGHT:2 tons	COOKING OIL:200 gals.
DIAMETER:15 feet	AREA:176 sq. ft.
CIRCUMFERENCE:45 feet	HEAT:40 gas burners
HANDLE LENGTH:6 feet	CAPACITY:365 chickens



Dennis Ramsey, 1993

Photo taken by Christopher W. Lyu, MPA,

Battelle/Centers for Public Health Research & Evaluation Duplin County Vanguard Center – University of North Carolina.



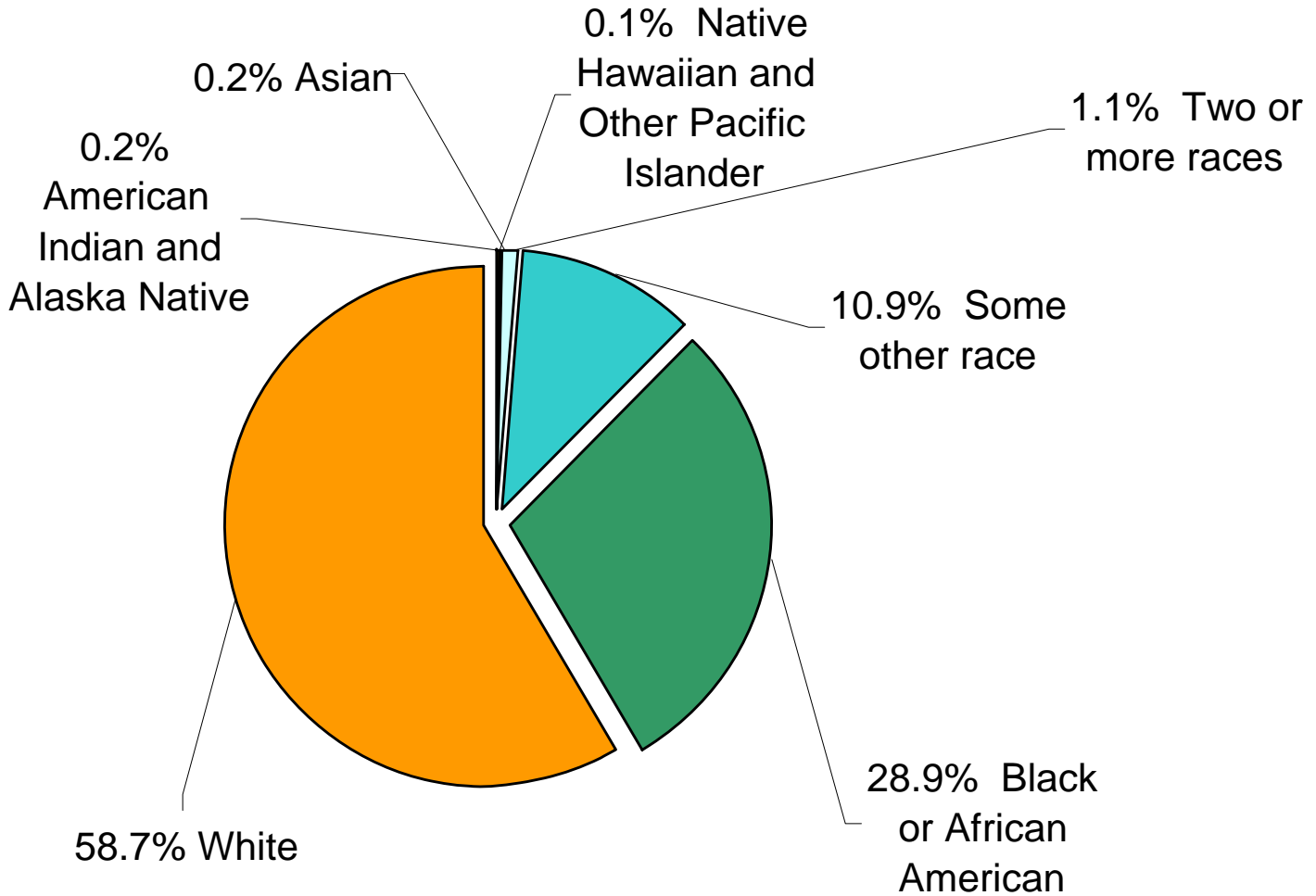
Duplin County's Largest Employers - 2000



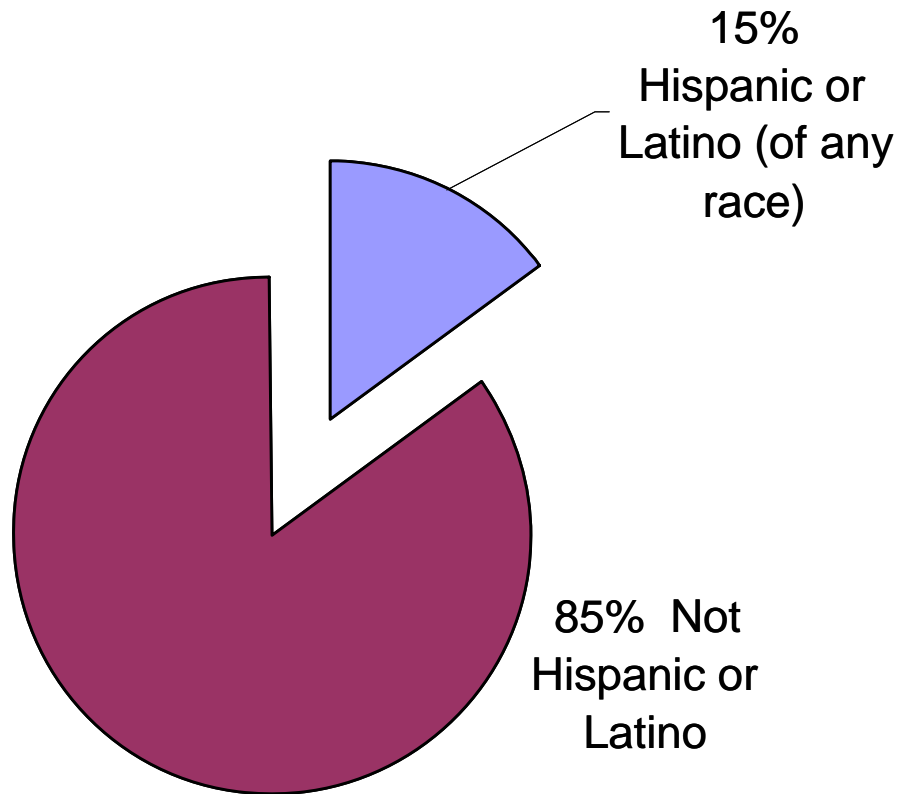
Employer	Product	Employees
Murphy-Brown's Company, Inc.	Pork and Poultry Production Feed Preparation	2,400
Carolina Turkeys	Turkey Processing	2,100
Duplin County Schools	K-12 Public Education	1,300
Guilford Mills, Inc.	Warp Knitting, Dyeing, Finishing; Automotive Textiles	1,040
House of Raeford	Poultry Processing	800
Dean Pickle & Specialty Products Company	Pickles and Relishes	600
Nash Johnson & Sons Farms	Poultry Production Feed Preparation	570
Duplin County Local Government	Local Government	453
Circle S Foods, Inc.	Turkey Processing	400
National Spinning Company	Synthetic Yarns	247
Precision Hydraulic Cylinders, Inc.	Hydraulic Cylinders	142
Allied Duralux, Co.	Athletic Sportswear & Filter Bags	100
Valley Proteins, Inc.	Feed Preparation	100
Amital Spinning Corp.	Acrylic Yarn	60
Amilon, LLC	Chenille Yarn	50
James Sprunt Community College	North Carolina Community College	550
Duplin General Hospital	Local Healthcare Facility	438



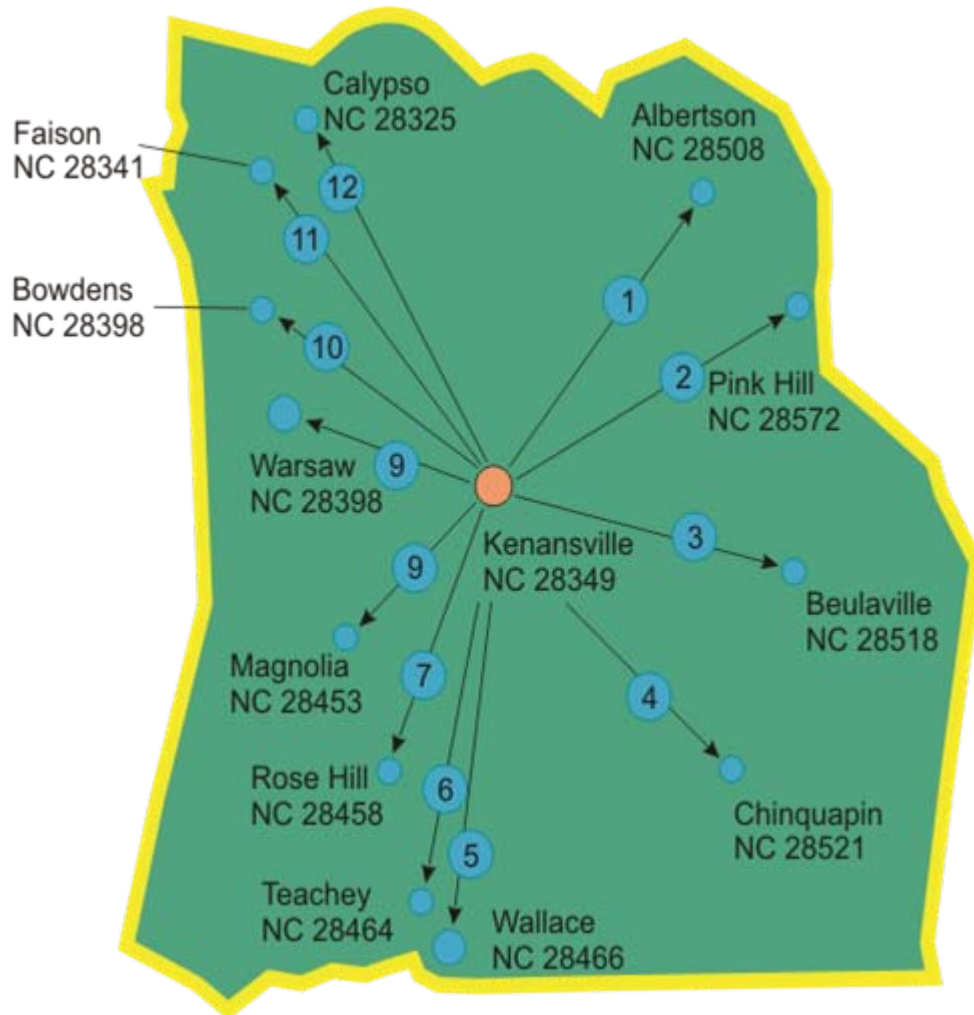
Duplin County Racial Diversity-2000



Duplin County Ethnic Diversity - 2000



Major Towns and Zip Codes



Est. Distance from Kenansville To:

1. 15 miles
2. 20 miles
3. 13 miles
4. 22 miles
5. 19 miles
6. 18 miles
7. 16 miles
8. 9 miles
9. 10 miles
10. 13 miles
11. 21 miles
12. 27 miles

From Christopher W. Lyu, MPA,
Battelle/Centers for Public Health Research & Evaluation Duplin County Vanguard Center – University of North Carolina.



Duplin County Female Population by Township and Age Groups, 2003 Population Estimate

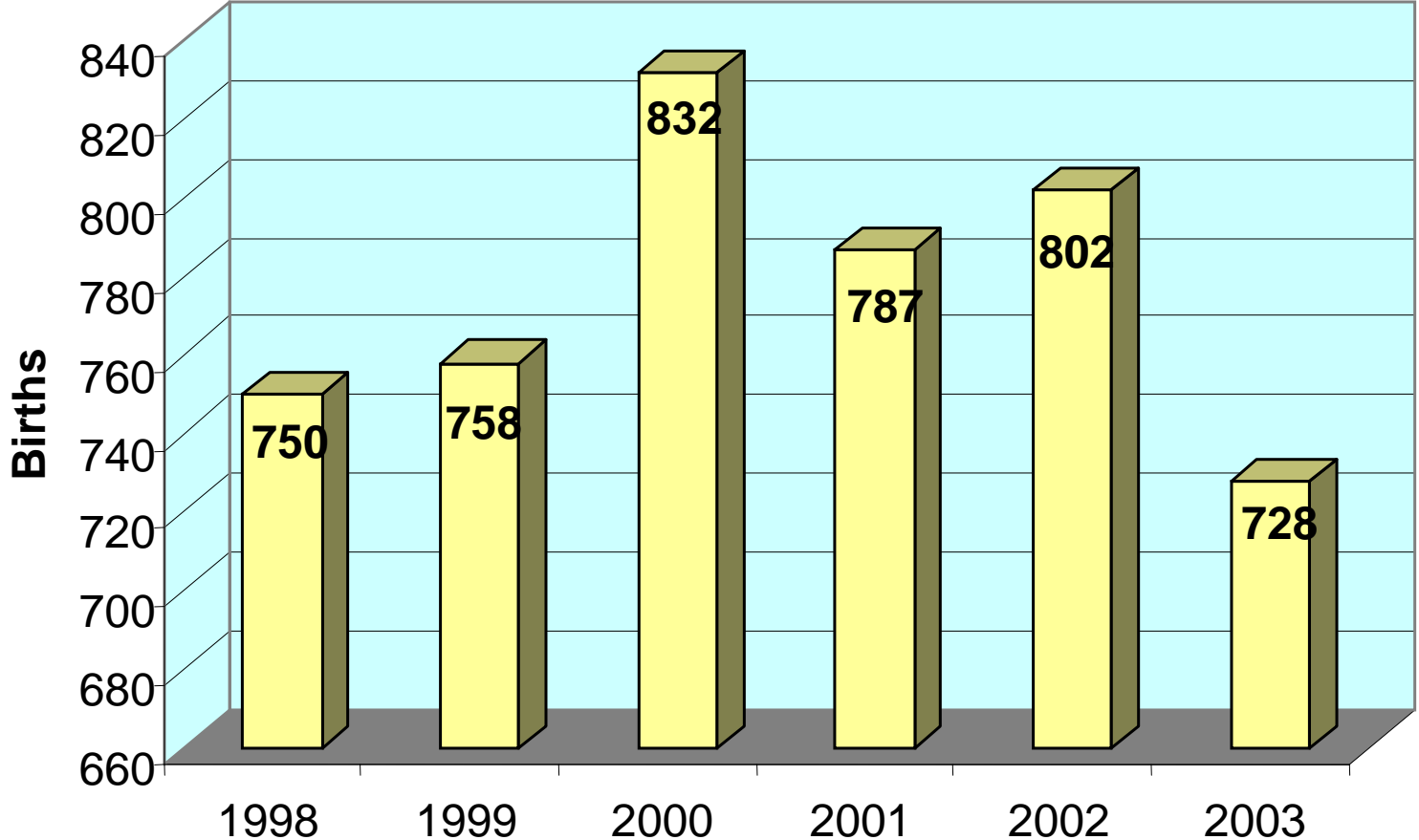


Geographic Area	12 to 17 years	18 to 24 years	25 to 29 years	30 to 34 years	35 to 39 years	40 to 44 years
Albertson township	70	126	177	152	96	50
Cypress Creek township	87	89	113	135	106	142
Faison township	160	153	147	94	175	135
Glisson township	45	81	43	67	59	56
Island Creek township	404	347	275	325	368	304
Kenansville township	179	164	115	156	237	175
Limestone township	257	289	262	213	219	272
Magnolia township	103	177	126	126	120	80
Rockfish township	92	49	40	27	58	65
Rose Hill township	166	122	99	155	132	124
Smith township	82	115	86	88	100	151
Warsaw township	255	316	198	164	221	183
Wolfscrape township	130	115	130	92	77	89
Total	2,029	2,144	1,811	1,794	1,971	1,826



Numbers of Births

Duplin County Resident Births 1998 - 2003



Top 5 Delivery Hospitals for Duplin County Births



Rank	Hospital Name	2001		2002		2003		3-year total	
		number	% of total	number	% of total	number	% of total	number	% of total
1	Duplin General Hosp, Kenansville	504	64.0%	540	67.3%	504	69.2%	1548	66.8%
2	New Hanover Reg Med Center, Wilmington	120	15.2%	100	12.5%	88	12.1%	308	13.3%
3	Wayne Co Memorial Hosp, Goldsboro	41	5.2%	31	3.9%	37	5.1%	109	4.7%
4	Lenoir Memorial Hosp, Kinston	25	3.20%	26	3.20%	26	3.60%	77	3.30%
5	Onslow Memorial Hosp, Jacksonville	35	4.40%	40	5.00%	0	0.00%	75	3.30%
Total Top 5 Hospitals		725	92.00%	737	91.90%	655	90.00%	2117	91.30%
TOTAL Duplin		787	100.0%	802	100%	728	100%	2317	100%



Duplin General Hospital - Kenansville



*Photo taken by Christopher W. Lyu, MPA,
Battelle/Centers for Public Health Research & Evaluation Duplin County Vanguard Center – University of North Carolina.*



Collaboration

UNC – Prime

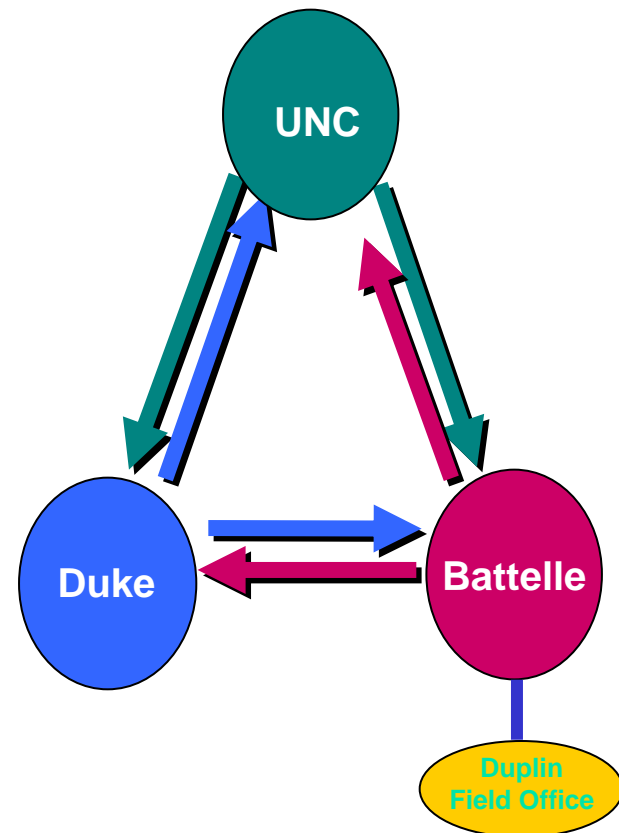
Epidemiology, Ob/Gyn, Child
Development
Liaison with Duplin County
Research Methods

Duke – Sub to UNC

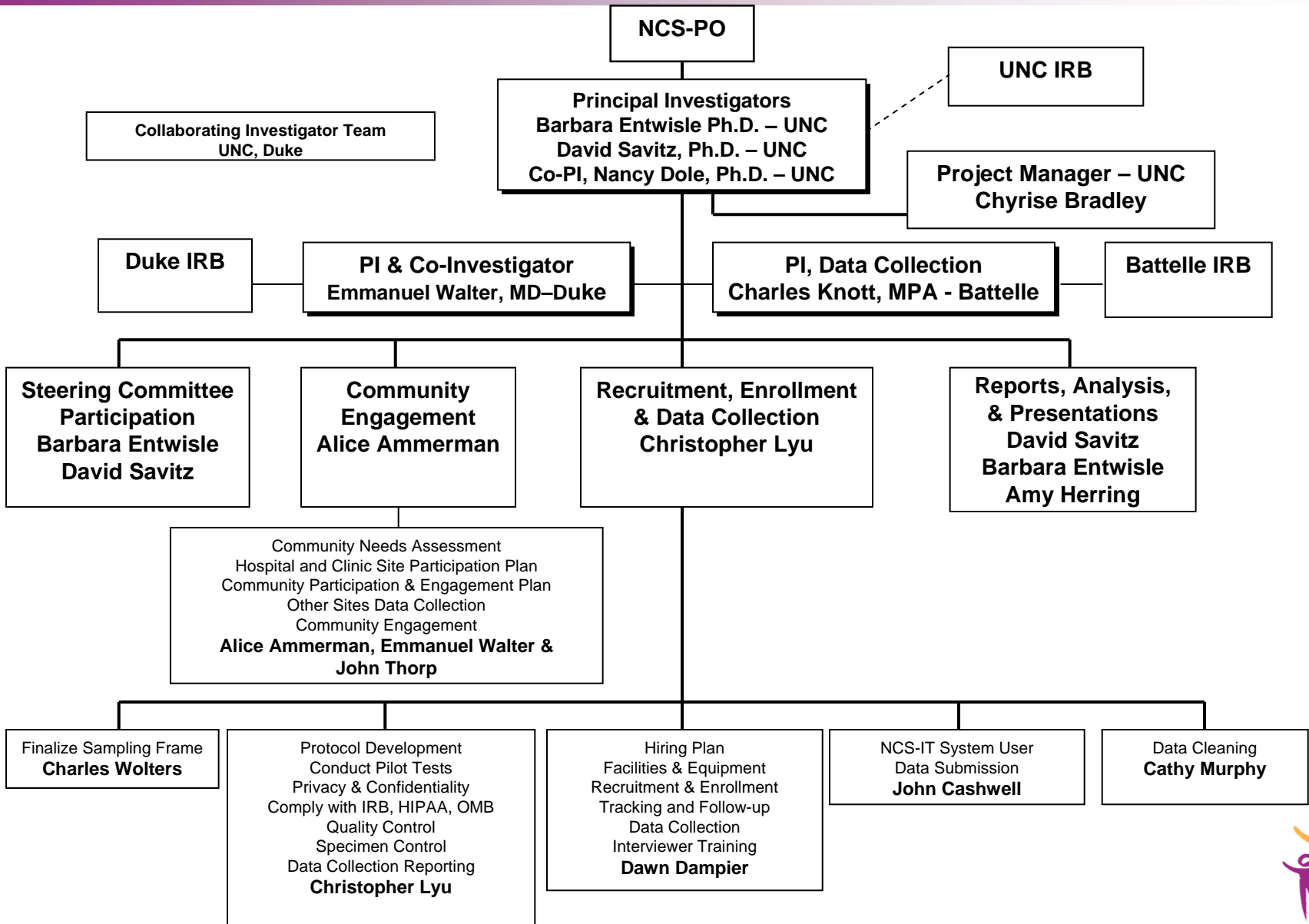
Pediatrics
Child mental health
Environmental exposure assessment

Battelle – Sub to UNC

Coordinate Sampling with CC
Recruitment and enrollment
Field data collection in homes and
clinics



Duplin County Management Chart



Indicators of Infant and Child Health



	Duplin County	NC Average
Infant Mortality, 1998-2002	9.4	8.7
Low Birth Weight Babies, 2002	9.6	9.0
Child Deaths, 0-17, all causes (per 100,000)	106.4	79.9
Children in Poverty, 2000	22.9	16.1

