

The National Children's Study Study Assembly

Salt Lake County Vanguard Center
November 29-30, 2005

Edward B. Clark, MD
Department of Pediatrics
University of Utah

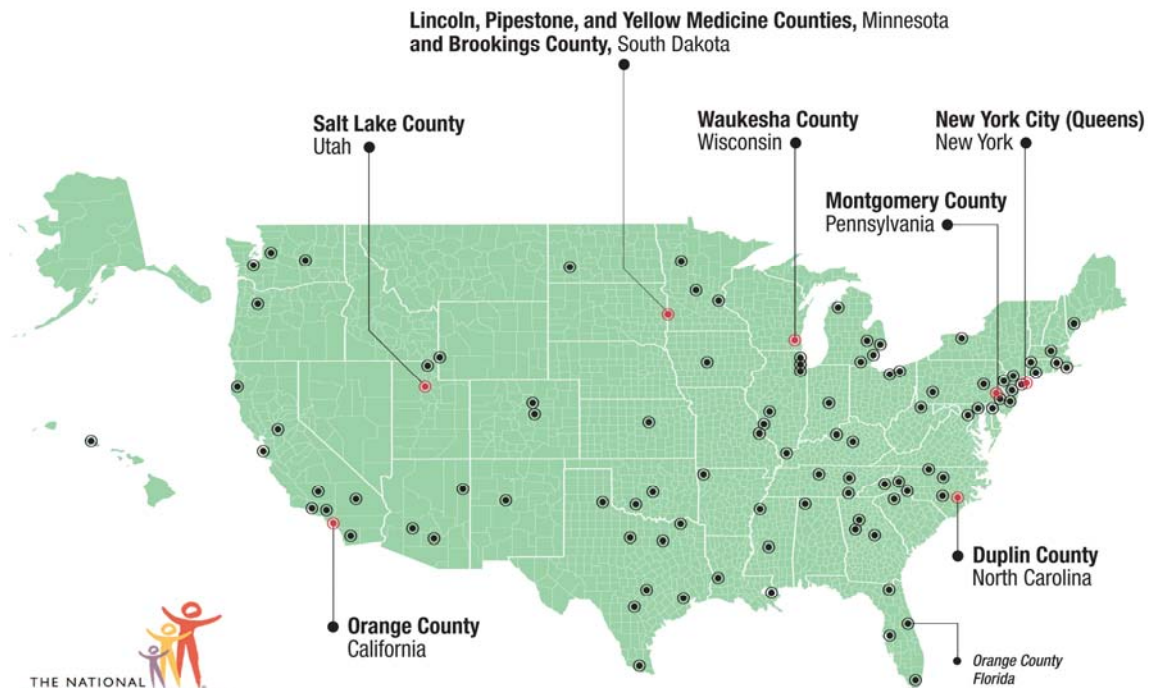


Vanguard Locations & Sample Sites

National Children's Study Locations

Vanguard locations: Study Centers awarded (bold)

Vanguard locations: Study Centers pending award (italic)



November 2005



State of Utah

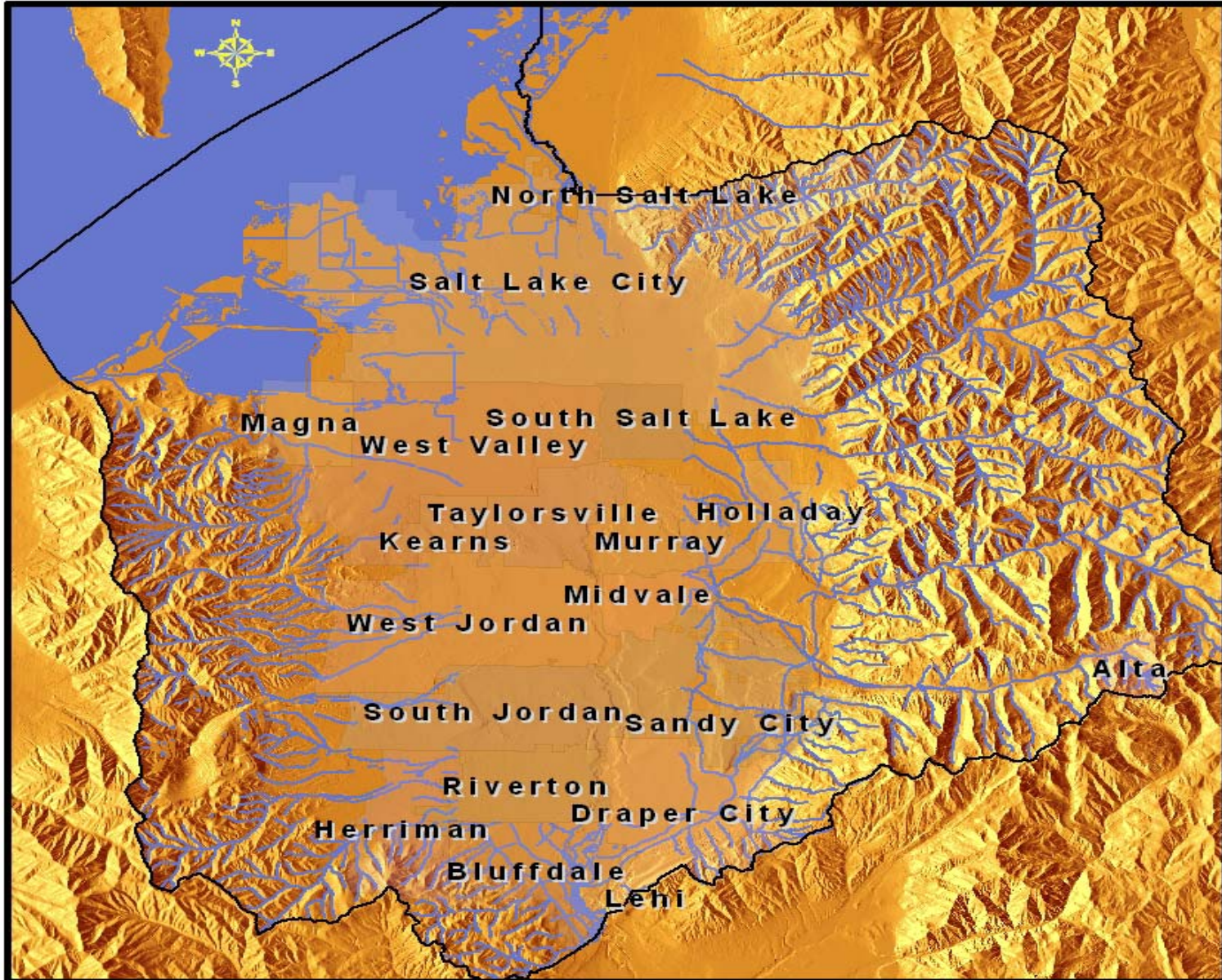


Copyright 2005 digital-topo-maps.com

Map image from <http://www.digital-topo-maps.com/utah.shtml>



Topography Surrounding Salt Lake County



Map image from CD Rom/Software Package: ArcGIS. Done by Sean Firth, PhD, MPH

Population Characteristics*

■ Total Population	920,666
■ Male	465,579 (50.6%)
■ Female	455,087 (49.4%)
■ Median Age (years)	29.6 (US 36.2)
■ < 5	86,841 (9.4%)
■ 18+	644,153 (70.0%)
■ 65+	71,548 (7.8%)

*From 2004 American Community Survey



Economic Characteristics

- In labor Force (16+ yrs) 494,058
73.4%
- Med. Household Income \$48,578
(US \$44,684)
- Med. Family Income \$55,751
(US \$53,692)
- Families below poverty level 7.9%
(US 10.1%)
- Individuals below poverty level 10.9%
(US 13.1%)



Ethnicity by Birth Year

Ethnicity	Birth Year			
	2000 N(%)	2001 N(%)	2002 N(%)	2003 N(%)
White	16,854 (92.69)	16,536 (92.72)	17,064 (92.42)	16,705 (92.18)
African-American	196 (1.08)	201 (1.13)	205 (1.11)	231 (1.27)
Native American	214 (1.18)	186 (1.04)	167 (0.90)	171 (0.94)
Asian	155 (0.85)	152 (0.85)	563 (3.05)	552 (3.05)
Pacific Islander	10 (0.05)	7 (0.04)	425 (2.30)	424 (2.34)
Other Entries N.E.C.	0 (0.00)	0 (0.00)	40 (0.22)	39 (0.22)
Not Reported	754 (4.15)	752 (4.22)	0 (0.00)	0 (0.00)
Total	18,183	17,834	18,464	18,122



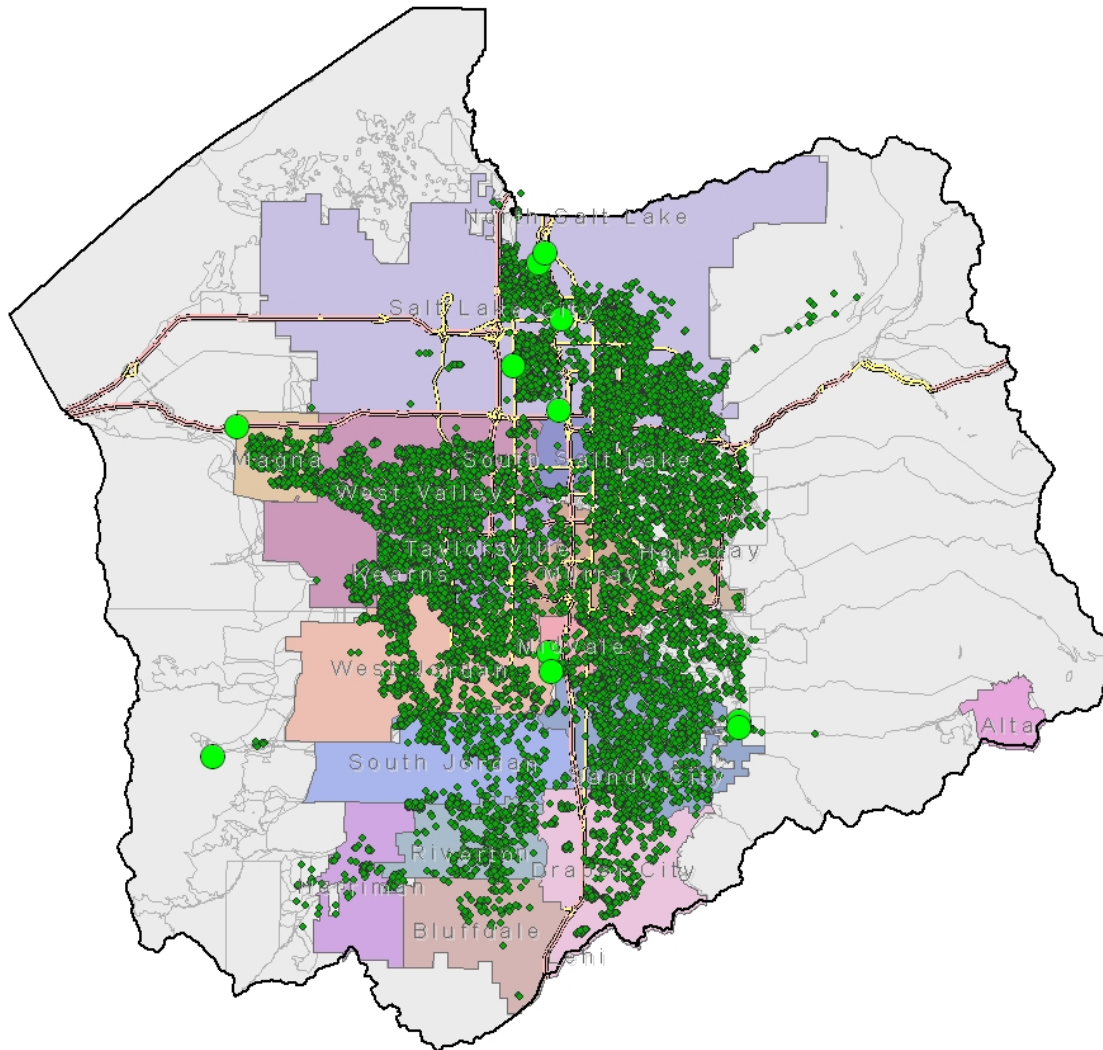
Hispanic by Birth Year



	Birth Year			
	2000 N(%)	2001 N(%)	2002 N(%)	2003 N(%)
Non-Hispanic	15,193 (82.87)	14,671 (81.04)	14,894 (80.25)	14,614 (80.19)
Hispanic	3,140 (17.13)	3,433 (18.96)	3,665 (19.75)	3,610 (19.81)
Total	18,333	18,104	18,559	18,224



Births in Salt Lake County 2000-2003



NPL Sites

Map image from CD Rom/Software Package: ArcGIS. Done by Sean Firth, PhD, MPH



Salt Lake County

- Urban Region: surrounded by mountains and wilderness
- All births link to the Utah Population Data Base
 - > 10 million records and genealogy of >4 million individuals
- High birth rate: large family size
 - Young population: 10% <5 yr, 23% < 18 yr
- Ethnic and cultural considerations
 - Large undocumented community
 - 81 languages spoken/ health literature in 24 languages
- Environmental issues
 - 11 NPL sites
 - Air quality compromised by “stagnant bowl” effect
 - Critical water supply
 - Underground aquifers
 - Surface water capture

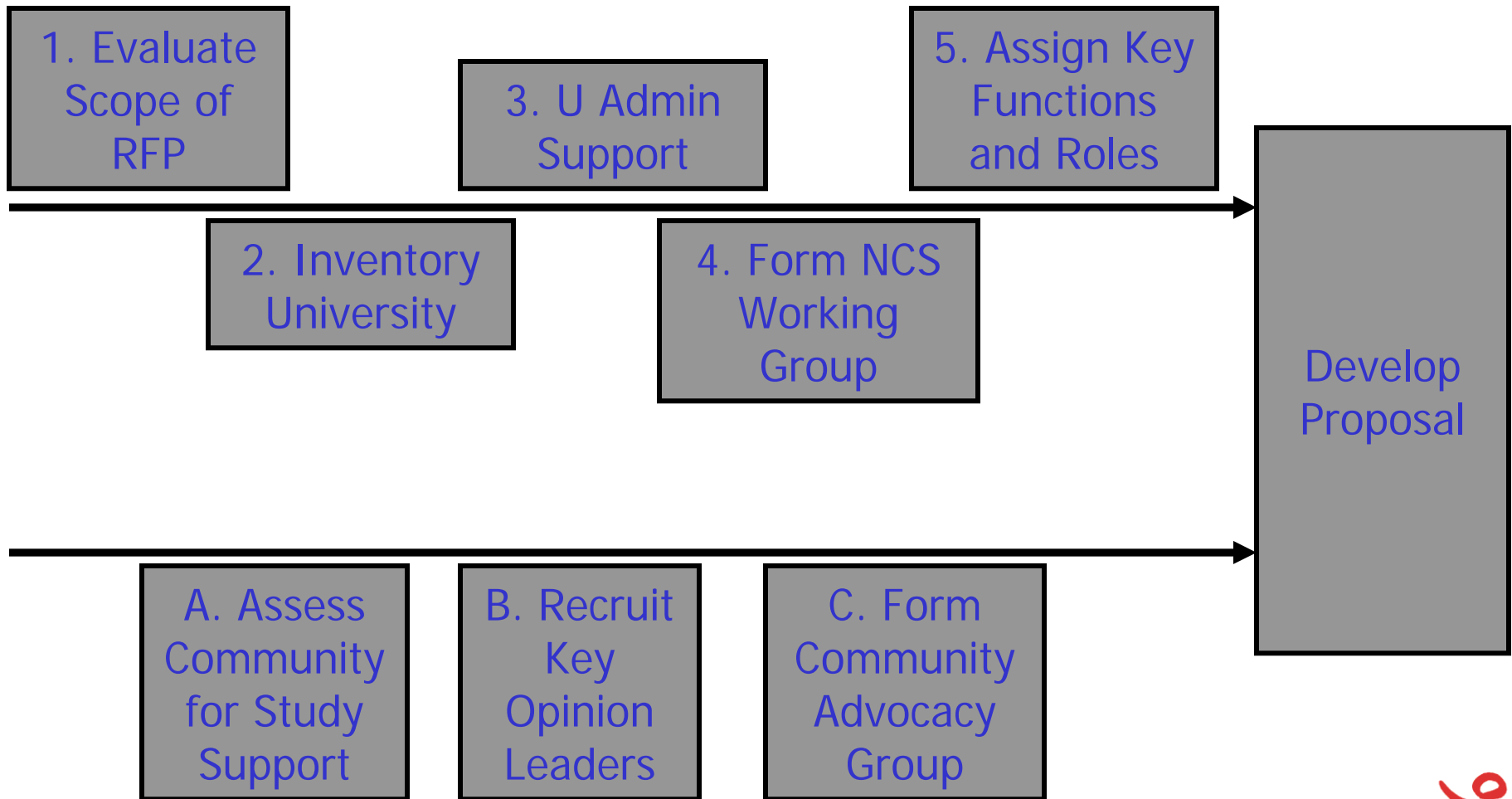




Process of Organizing the Utah Vanguard Center



Process Model for Organization



1. Evaluate RFP

- Do not underestimate the scope of the project
- Define the study as related to your community- SWOT
 - Strengths
 - Challenges
- Decide if you can commit the time and resources to the project



2. Inventory the University

- Define resources available within the university
- Inventory past and current research for activities in the RFP
- Identify the gaps in skills, tools and people
- Seek and engage extramural partners to fill gaps and create coherent teams



3. Obtain University Support – Inform and Engage Higher Admin



- Administrative support for the project
 - Engage key personnel from sponsored projects and research accounting
 - Define assets needed for the implementation
- Financial support to offset development costs
 - Time, effort, costs over 4 years \$0.5 M
- Get approval for access to political support from community component



4. Form NCS Working Group

- Identify and enroll key faculty and staff in a working group
- Provide support for efforts
- Recognize that not all components of a proposal may be funded



5. Develop Organization Plan

- Assign key functions with accountabilities, deliverables and dates
- Develop organization structure including large and small group meetings
- Communication tools and motivation
 - eRoom
 - Fixed meeting site



A. Community Support

- Test the waters for a large scale community study
- Identify key opinion leaders
 - Political spectrum from left to right
 - Under represented ethnic groups
 - Faith groups
 - Medical community
 - Business and labor
 - Local and state health departments
 - All others who will have a stake in the project including special interest groups



B. Community Advisory Committee

- From the prior groups, draw individuals who will speak for and about the study
- Serve as trust builders with the more skeptical segments of the community
- Identify individuals who are creditable with regional and national groups

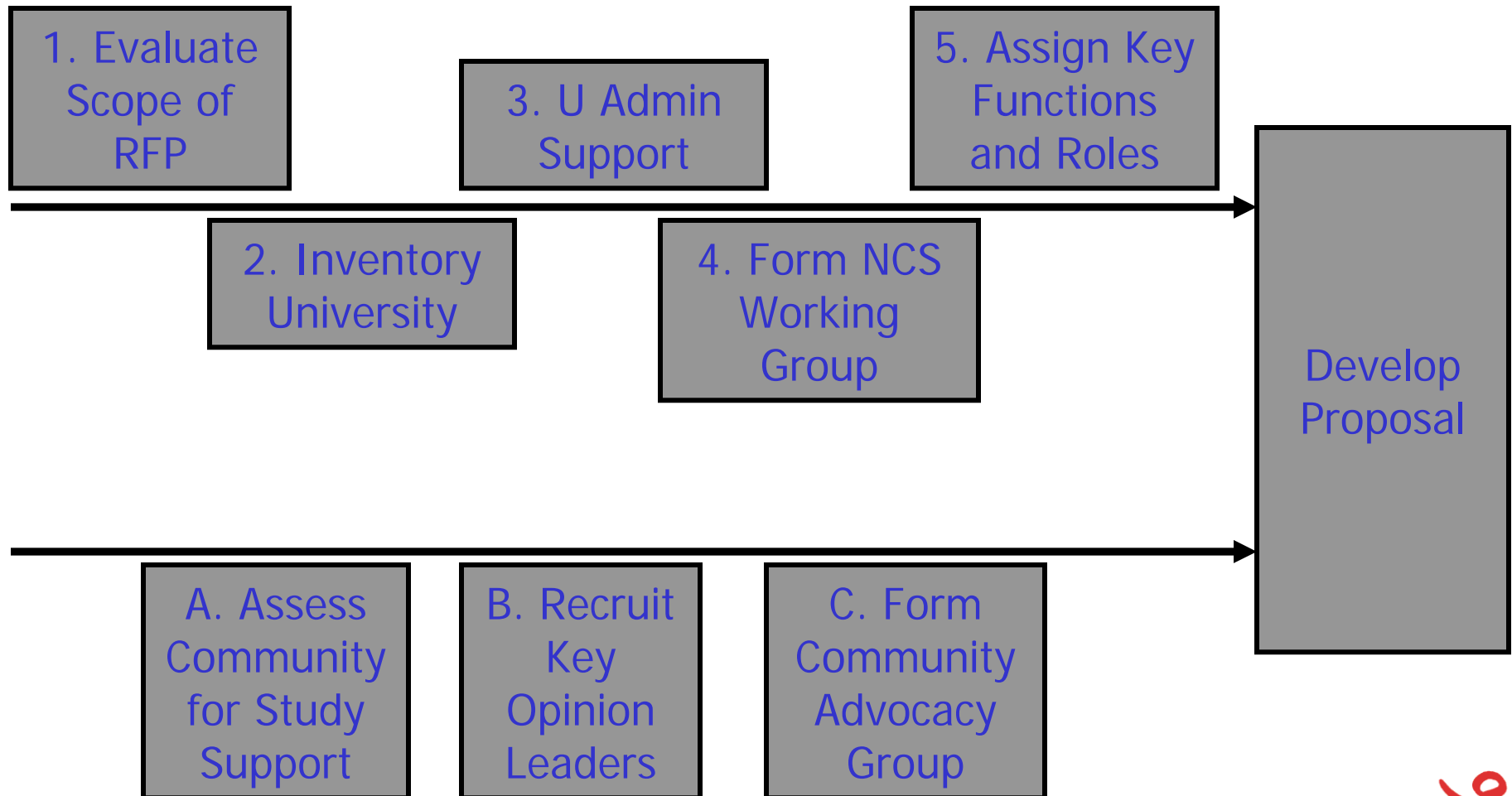


C. Identify Neighborhood Champions

- Assess regions of the community likely to be sampled
- Employ community assessment strategies to define key issues
- Use focus groups and individual discussions to find bubble-up champions



Process Model for Organization



Salt Lake County, Utah



Photo from www.istockphoto.com



Household Characteristics

Average Household Size	2.94	(US 2.60)
Average Family Size	3.48	(US 3.18)
Total Housing Units	331,749	
Occupied housing units	313,001	(94.3%)
Owner-occupied units	212,772	(68.0%)
Renter-occupied units	100,229	(32.0%)
Vacant units	18,748	(5.7%)



Social Characteristics

- Population 25 + yrs. 536,530
 - High school graduate+ 86.5%
 - Bachelor's degree+ 28.8%
- Foreign born 98,879 (10.7%)
- Language other than English at home 132,994 (15.9%)



Total Births by Year



Birth Year	N
2000	18,333
2001	18,104
2002	18,559
2003	18,224
Total	73,220



Birth Sex by Year

	Birth Year			
	2000 N(%)	2001 N(%)	2002 N(%)	2003 N(%)
Male	9,398 (51.26)	9,335 (51.56)	9,481 (51.09)	9,278 (50.91)
Female	8,935 (48.74)	8,767 (48.43)	9,078 (48.91)	8,946 (49.09)
Indeterminable	0	2 (0.01)	0	0
Total	18,333	18,104	18,559	18,224

