

Celebrating Nursing Science: The Research-Practice Link

Wound Care Panel



Linda Schakenbach, MSN, RN, CNS, CCRN, CWCN, APRN, BC
Clinical Nurse Specialist, Medical Cardiac Nursing
Inova Fairfax Hospital/Inova Heart and Vascular Institute
Falls Church, VA

Celebrating Nursing Science: The Research-Practice Link - Wound Care Panel

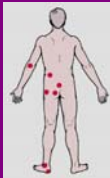


• How does research get to practice???

- Journals
- Conferences/seminars
- Poster presentations
- National standards
 - Professional organizations
 - Government standards
 - Public groups/organizations
- Research grants
- List serves
- Answer to a question

Schakenbach

Celebrating Nursing Science: The Research-Practice Link - Wound Care Panel



- 1992 Clinical Nurse Specialists **identified need** for pressure ulcer prevention
- **Validated need** with
 - Staff
 - WOCN
 - Quality Department
 - Administration
 - Risk Management
 - Physicians
 - Annual Pressure Ulcer prevalence survey data

Schakenbach

What should 'we' do???



Schakenbach

- **Brainstorm**
- **Benchmark**
 - Professional organizations
 - National/proprietary databases
 - List serves
 - Phone calls/e-mails
- **Review the literature**
 - Are there current standards?
 - Do any research reports have questions relevant to our needs?

Current standards:



Schakenbach

- Pressure Ulcers in Adults: Prediction and Prevention (Clinical Practice Guideline, May 1992, US Dept. HHS, AHCPR [nowAHRQ])
- Pressure Ulcers: Incidence, economics, risk assessment. Consensus development conference statement (National Pressure Ulcer Advisory Panel, 1989)

Should we use the research literature we found???



- Research question relevant
- Literature review/reference list 'current'
- Number of subjects and sampling procedure
- Characteristics of subjects
- Characteristics of facility
- Protocol logical for research question
- Tools reliable and valid
- Resources available
- Conclusions and discussion correlate with the data
- Results clinically significant (vs. statistically significant)



Schakenbach

What did we learn from the literature???

- Perform systematic risk assessment and reassessment at periodic intervals
- Research determined validity and reliability of the Braden Scale
- Research identified the Braden Scale was:
 - best performed by RNs
 - easy to gather the data and complete the tool
 - quick (< 1 minute/patient)
 - easy math (user friendly)
- Braden Scale literature primarily long-term care



Schakenbach

Question:



- Are the benefits of the change worth the costs to
 - patient
 - family
 - staff
 - expenditure on other resources (equipment, supplies, personnel)?

Schakenbach

What has research demonstrated over time?

Bergstrom, N., Braden, B., Kemp, M., Champagne, M., & Ruby, E. (1996). Multi-site study of incidence of pressure ulcers and the relationship between risk level, demographic characteristics, diagnoses, and prescription of preventing interventions. *Journal of the American Geriatric Society*, 44, 22-30.

- Risk assessment with the Braden Scale good predictive value
- Braden Scale assists with identification of patient interventions
- Tertiary care facilities studied
- 100% sensitivity (!); 64-90% specificity
- Pressure ulcer distribution described



Schakenbach

What has research demonstrated over time?

Bergstrom, N., Braden, B., Champagne, M., Kemp, M., & Ruby, E. (1998). Predicting pressure ulcer risk: A multisite study of the predictive validity of the Braden Scale. *Nursing Research*, 47 (5). 261-269.

- Assess patients on admission
- Re-assess at 48-72 hours
- Best sensitivity of assessment: 48-72 hours after admission
- Validated score of 18 cutoff for patients at low risk for pressure ulcer development
- Identified pressure ulcer developed Day 11 (mean)
- Formal risk assessments → best use of resources



Schakenbuch

What has research demonstrated over time?

Bergstrom, N., & Braden, B.J. (2002). Predictive validity of the Braden Scale among black and white subjects. *Nursing Research*, 51 (6). 398-403.

- Braden Scale score cutoff of 18 valid for both black and white patients



Schakenbuch

Translation into practice:

- Awareness of trends provides a preview of possible practice changes
- Access research reports
- Evaluate quality of research
- Evaluate 'fit' of research to practice situation
- Develop co-champions
- Develop the plan: implement, evaluate, maintain, continue to improve & advance practice/patient care



- **Keep asking WHY???**

Schakenbuch

Celebrating Nursing Science: The Research-Practice Link - Wound Care Panel



Thank you

Schakenbach
