



Research Centers in Minority Institutions (RCMI) Translational Research Network (RTRN)

**Supporting Connectivity for
Biomedical Research:**

Keith C. Norris, M.D., FACP

What is the RCMI “Translational” Research Network (RTRN) ?

- ★ A cooperative research network that will facilitate translational research in health disparity areas.
- ★ A consortium of investigators from RCMI and partnering institutions (academic & community)
- ★ Core: Data and Technology Coordinating Center (DTCC)



Clinical Research to Clinical Practice – Lost in Translation?

- ✦ Enormous amounts of new knowledge are barreling down the information highway, but they are not arriving at the doorsteps of our patients.
- ✦ This is particularly true for a disproportionately high percentage of women, racial and ethnic minorities, and other high-risk groups in the US healthcare system.

Lenfant C. Clinical Research to Clinical Practice - Lost in Translation?
N Engl J Med 2003;349:868-74.



Clinical Research to Clinical Practice – Lost in Translation?

- ★ This issue of who will really benefit from research results is especially critical as we look toward applications of proteomic/genomic research.

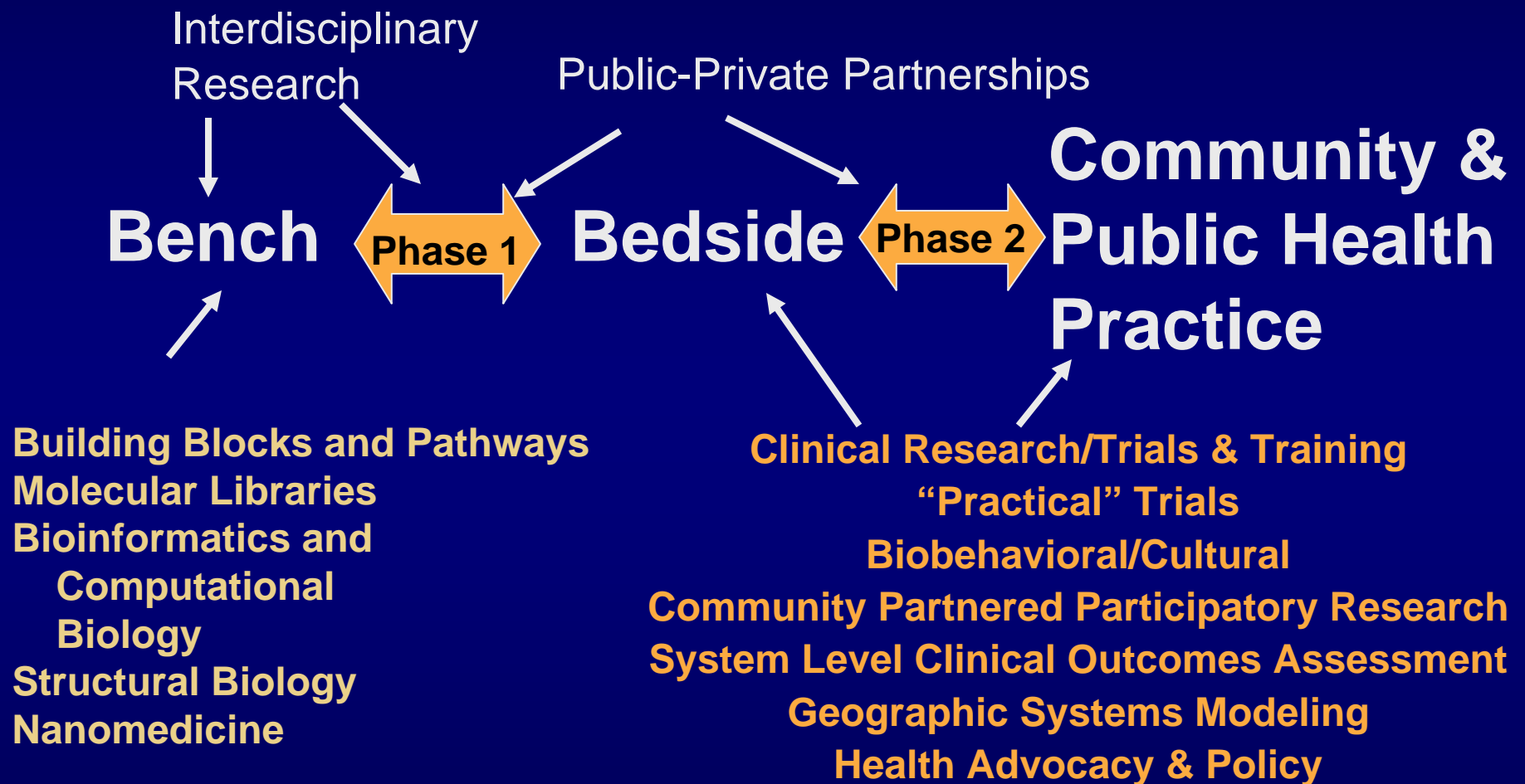
And we must direct our attention, our commitment, our energies, our creativity, and our resourcefulness to making sure that the beneficiaries will be the patients —

all the patients!

Lenfant C. Clinical Research to Clinical Practice - Lost in Translation?
N Engl J Med 2003;349:868-74.



Why “Translational” Research and a “Translational” Research Network?



Garfield SA, et al and the Diabetes Mellitus Interagency Coordinating Committee Translation Conference Working Group.

Diabetes Care. 2003; 26:2670-2674. &

Sung NS et al. Central challenges facing the national clinical research enterprise. *JAMA.* 2003; 289:1278–1287.

Norris KC. Translational Research: Moving Scientific Advances into the Real-World Setting. *Ethn Dis.* 2005;15(3):363-4

RCMI Translational Research Network (RTRN) Overview

- ✦ Initiate and perform multi-center clinical trials
 - e.g. Minority involvement in clinical research
 - Gene-environment interactions, advancing personalized medicine, Community focused research.
- ✦ Data & Technology Coordinating Center
- ✦ Highly active educational/training platform
- ✦ Integrated basic biomedical research platform
 - Computational biology
 - Imaging



Who can Participate in RTRN?

★ The RCMI Community & partners

- IDEA institutions, GCRC/CTSA, community providers, health networks, others.

★ Project Activity

- Preferably (not necessarily) two levels of activity: across and within disciplines
 - Disease, Stage (e.g. cell, animal, individual, community), Discipline e.g. nanotechnology, clinical trials, community research, computational modeling, economic modeling, etc.
 - Similar activities/levels may involve critical resource sharing

★ Other Considerations

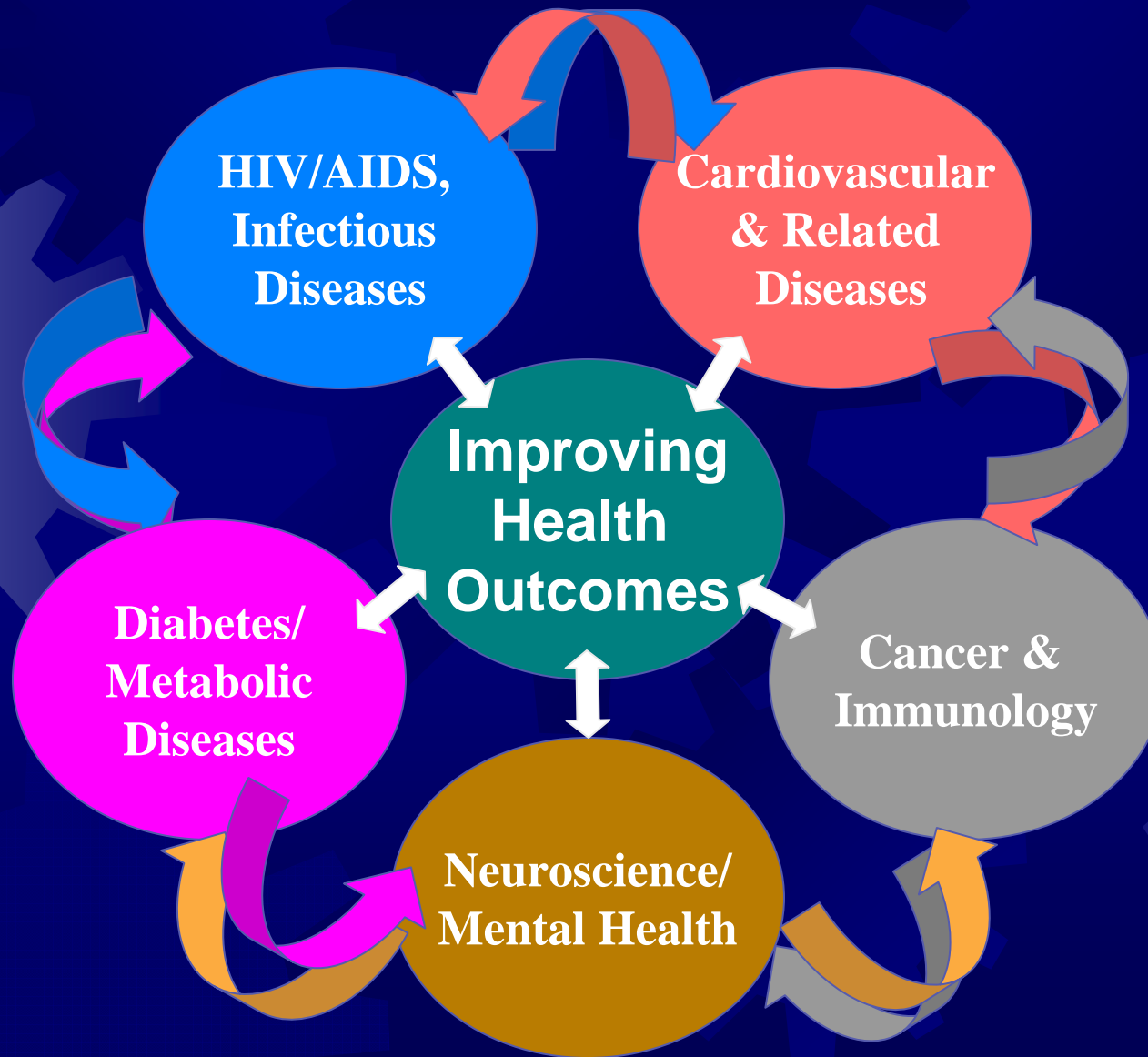
- Institutional culture - promotion/credit, innovation -IP
- Cyber Workspaces

★ Educational Activities

- Faculty, trainees, community



RTRN Research Disease Cluster



Jackson State University DTCC



Cyber-Workspaces

- ★ Active inter-and intra-institutional collaborations across disciplines with Structure & Functional Processes
- ★ Research Clusters & Workgroups
 - Interdisciplinary, organized by disease/methods/other with a shared theme
- ★ Admin/Technical support
 - Provide structure & ensure the process is active, not passive.



Health Level Seven (HL7)

- ★ *Develops specifications that enable the semantically interoperable interchange of healthcare and research data between information systems across the entire healthcare continuum.*
- ★ *This is critical for health related research data issues.*



Interchange vs Interoperability

★ Interoperability

Ability of ≥ 2 systems or components to **exchange** information and **to predictably use** the information that has been exchanged.

Source: IEEE Standard Computer Dictionary: A Compilation of IEEE Standard Computer Glossaries, IEEE, 1990]

Syntactic
interoperability
(interchange)

Time flies-Fruit flies

Semantic
interoperability
Meaning & Context

Adapted from C. Meade, MD

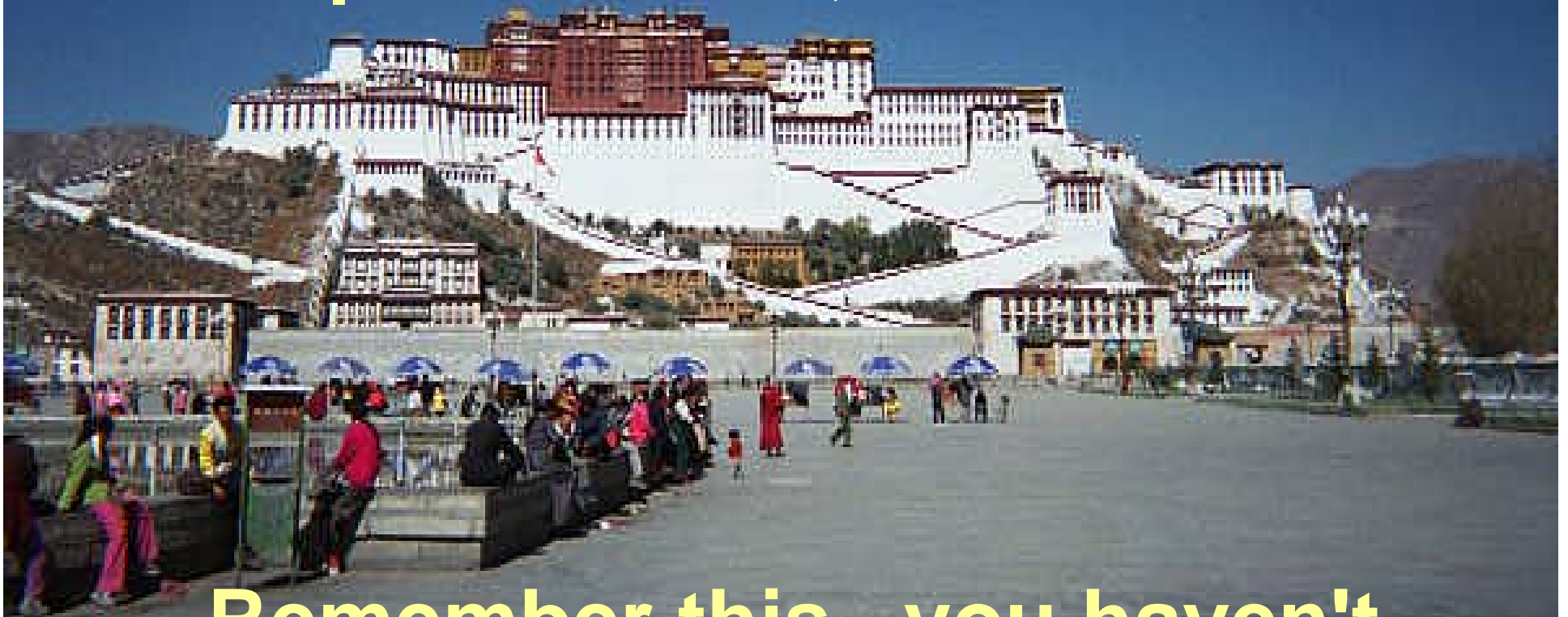
NIH-NCRR: RCMi SITES





Global-World HIV/AIDS Alliance

**When you have exhausted
all possibilities,**



Remember this...you haven't.

- Author Unknown