

Table XXIV-1
STOMACH CANCER (Invasive)

TRENDS IN SEER INCIDENCE^a AND U.S. MORTALITY^b USING THE JOINTPOINT REGRESSION PROGRAM, 1975-2005
WITH UP TO THREE JOINTPOINTS BY RACE AND SEX

		<u>Joinpoint Trend 1</u>		<u>Joinpoint Trend 2</u>		<u>Joinpoint Trend 3</u>		<u>Joinpoint Trend 4</u>		<u>AAPC^c</u>	
		<u>Years</u>	<u>APC</u>	<u>Years</u>	<u>APC</u>	<u>Years</u>	<u>APC</u>	<u>Years</u>	<u>APC</u>	<u>1996-2005</u>	<u>2001-2005</u>
<u>SEER Cancer Incidence^a</u>											
All Races	Both Sexes	1975-2005	-1.6*							-1.6*	-1.6*
All Races	Male	1975-1988	-1.2*	1988-2005	-2.1*					-2.1*	-2.1*
All Races	Female	1975-2005	-1.6*							-1.6*	-1.6*
White	Both Sexes	1975-2005	-1.9*							-1.9*	-1.9*
White	Male	1975-2005	-1.9*							-1.9*	-1.9*
White	Female	1975-2005	-2.0*							-2.0*	-2.0*
Black	Both Sexes	1975-1982	1.2	1982-2005	-1.8*					-1.8*	-1.8*
Black	Male	1975-1982	2.4	1982-2005	-2.2*					-2.2*	-2.2*
Black	Female	1975-2005	-1.0*							-1.0*	-1.0*
<u>SEER Delay-Adjusted Incidence^a</u>											
All Races	Both Sexes	1975-2005	-1.6*							-1.6*	-1.6*
All Races	Male	1975-1988	-1.2*	1988-2005	-2.0*					-2.0*	-2.0*
All Races	Female	1975-2005	-1.6*							-1.6*	-1.6*
White	Both Sexes	1975-2005	-1.9*							-1.9*	-1.9*
White	Male	1975-2005	-1.9*							-1.9*	-1.9*
White	Female	1975-2005	-2.0*							-2.0*	-2.0*
Black	Both Sexes	1975-1982	1.1	1982-2005	-1.7*					-1.7*	-1.7*
Black	Male	1975-1982	2.3	1982-2005	-2.1*					-2.1*	-2.1*
Black	Female	1975-2005	-0.9*							-0.9*	-0.9*
<u>U.S. Cancer Mortality^b</u>											
All Races	Both Sexes	1975-1987	-2.6*	1987-1990	-0.2	1990-2005	-3.0*			-3.0*	-3.0*
All Races	Male	1975-1987	-2.3*	1987-1991	-0.9	1991-2005	-3.5*			-3.5*	-3.5*
All Races	Female	1975-1987	-2.8*	1987-1990	-0.4	1990-2005	-2.7*			-2.7*	-2.7*
White	Both Sexes	1975-1987	-2.8*	1987-1990	-0.7	1990-2005	-3.2*			-3.2*	-3.2*
White	Male	1975-1994	-2.3*	1994-2005	-3.9*					-3.9*	-3.9*
White	Female	1975-1987	-3.1*	1987-1990	-1.0	1990-2005	-2.9*			-2.9*	-2.9*
Black	Both Sexes	1975-1987	-1.6*	1987-1990	0.9	1990-1999	-2.5*	1999-2005	-3.9*	-3.4*	-3.9*
Black	Male	1975-1993	-1.1*	1993-2005	-3.4*					-3.4*	-3.4*
Black	Female	1975-2000	-1.2*	2000-2005	-5.3*					-3.5*	-5.3*

Joinpoint Regression Program Version 3.3.1, April 2008, National Cancer Institute. (<http://srab.cancer.gov/joinpoint/>).

The APC is the Annual Percent Change based on rates age-adjusted to the 2000 US Std Population (19 age groups - Census P25-1130). Trends are from the SEER 9 areas (San Francisco, Connecticut, Detroit, Hawaii, Iowa, New Mexico, Seattle, Utah, and Atlanta).

Trends are from US Mortality Files, National Center for Health Statistics, Centers for Disease Control and Prevention.

The AAPC is the Average Annual Percent Change and is based on the APCs calculated by Joinpoint over the time range of 1975-2005.

The APC/AAPC is significantly different from zero ($p < .05$).

a
b
c
*

Table XXIV-1a
STOMACH CANCER (Invasive)

TRENDS IN SEER INCIDENCE^a AND U.S. MORTALITY^b USING THE JOINPOINT REGRESSION PROGRAM, 1975-2005
 WITH UP TO FOUR JOINPOINTS BY RACE AND SEX

		<u>Joinpoint Trend 1</u>		<u>Joinpoint Trend 2</u>		<u>Joinpoint Trend 3</u>		<u>Joinpoint Trend 4</u>		<u>Joinpoint Trend 5</u>		<u>AAPC^c</u>
		Years	APC	Years	APC	Years	APC	Years	APC	Years	APC	2001-2005
<u>SEER Cancer Incidence^a</u>												
All Races	Both Sexes	1975-2005	-1.6*									-1.6*
All Races	Male	1975-1988	-1.2*	1988-2005	-2.1*							-2.1*
All Races	Female	1975-2005	-1.6*									-1.6*
White	Both Sexes	1975-2005	-1.9*									-1.9*
White	Male	1975-2005	-1.9*									-1.9*
White	Female	1975-2005	-2.0*									-2.0*
Black	Both Sexes	1975-1982	1.2	1982-2005	-1.8*							-1.8*
Black	Male	1975-1982	2.4	1982-2005	-2.2*							-2.2*
Black	Female	1975-2005	-1.0*									-1.0*
<u>SEER Delay-Adjusted Incidence^a</u>												
All Races	Both Sexes	1975-2005	-1.6*									-1.6*
All Races	Male	1975-1988	-1.2*	1988-2005	-2.0*							-2.0*
All Races	Female	1975-2005	-1.6*									-1.6*
White	Both Sexes	1975-2005	-1.9*									-1.9*
White	Male	1975-2005	-1.9*									-1.9*
White	Female	1975-2005	-2.0*									-2.0*
Black	Both Sexes	1975-2005	-1.4*									-1.4*
Black	Male	1975-1982	2.3	1982-2005	-2.1*							-2.1*
Black	Female	1975-2005	-0.9*									-0.9*
<u>U.S. Cancer Mortality^b</u>												
All Races	Both Sexes	1975-1987	-2.6*	1987-1990	-0.2	1990-2005	-3.0*					-3.0*
All Races	Male	1975-1994	-2.1*	1994-2005	-3.7*							-3.7*
All Races	Female	1975-1987	-2.8*	1987-1990	-0.4	1990-2005	-2.7*					-2.7*
White	Both Sexes	1975-1987	-2.8*	1987-1990	-0.7	1990-2005	-3.2*					-3.2*
White	Male	1975-1994	-2.3*	1994-2005	-3.9*							-3.9*
White	Female	1975-1987	-3.1*	1987-1990	-1.0	1990-2005	-2.9*					-2.9*
Black	Both Sexes	1975-1987	-1.6*	1987-1990	0.9	1990-1999	-2.5*	1999-2005	-3.9*			-3.9*
Black	Male	1975-1993	-1.1*	1993-2005	-3.4*							-3.4*
Black	Female	1975-2000	-1.2*	2000-2005	-5.3*							-5.3*

Joinpoint Regression Program Version 3.3.1, April 2008, National Cancer Institute. (<http://srab.cancer.gov/joinpoint/>).

The APC is the Annual Percent Change based on rates age-adjusted to the 2000 US Std Population (19 age groups - Census P25-1130).

Trends are from the SEER 9 areas (San Francisco, Connecticut, Detroit, Hawaii, Iowa, New Mexico, Seattle, Utah, and Atlanta).

Trends are from US Mortality Files, National Center for Health Statistics, Centers for Disease Control and Prevention.

The AAPC is the Average Annual Percent Change and is based on the APCs calculated by Joinpoint over the time range of 1975-2005.

The APC/AAPC is significantly different from zero ($p < .05$).

a
b
c
*

Table XXIV-2
STOMACH CANCER (Invasive)

AGE ADJUSTED SEER INCIDENCE^a RATES BY YEAR, RACE AND SEX

	<u>All Races</u>			<u>Whites</u>			<u>Blacks</u>		
	<u>Total</u>	<u>Males</u>	<u>Females</u>	<u>Total</u>	<u>Males</u>	<u>Females</u>	<u>Total</u>	<u>Males</u>	<u>Females</u>
<u>AGE-ADJUSTED RATES</u>									
<u>YEAR OF DIAGNOSIS:</u>									
1975	11.7	17.1	7.8	10.7	16.0	7.0	17.0	24.8	11.5
1976	12.2	17.5	8.3	11.2	16.0	7.7	15.8	23.5	10.1
1977	11.5	16.6	7.9	10.3	15.0	7.0	17.3	24.7	11.6
1978	11.5	16.5	7.9	10.3	15.0	7.0	17.6	22.9	13.5
1979	12.0	17.4	8.2	10.8	15.6	7.5	18.5	28.2	11.7
1980	11.3	17.1	7.2	10.3	15.7	6.6	15.1	26.3	7.3
1981	11.1	16.6	7.4	10.1	15.1	6.7	17.6	27.8	10.4
1982	10.9	16.3	7.1	9.7	14.6	6.3	19.0	31.2	10.3
1983	10.9	15.8	7.5	9.5	13.7	6.6	18.0	27.8	11.2
1984	10.6	15.3	7.3	9.4	13.9	6.4	16.5	21.8	12.3
1985	10.2	15.1	6.9	8.9	13.3	6.0	16.4	23.5	11.3
1986	10.2	15.0	6.8	9.1	13.5	5.9	16.5	23.2	11.9
1987	10.2	15.1	6.8	9.0	13.3	6.0	17.1	26.7	10.7
1988	10.2	15.5	6.5	8.8	13.6	5.5	16.2	24.8	10.1
1989	10.0	15.1	6.3	8.7	13.5	5.3	15.8	23.2	10.7
1990	9.3	13.7	6.2	8.0	11.9	5.2	14.4	21.8	9.4
1991	9.7	14.2	6.6	8.3	12.3	5.5	16.5	25.6	10.5
1992	9.2	13.4	6.1	8.0	11.7	5.2	14.0	19.9	9.8
1993	9.0	13.6	5.8	7.7	11.6	4.9	14.4	23.7	8.4
1994	9.0	13.6	5.7	7.7	11.8	4.8	15.0	24.7	8.8
1995	8.3	12.6	5.2	7.3	11.2	4.4	13.3	18.8	9.5
1996	8.5	12.6	5.5	7.3	11.0	4.7	14.5	22.6	8.9
1997	8.6	12.7	5.6	7.2	10.8	4.5	15.6	22.1	10.9
1998	8.6	12.2	5.9	7.2	10.5	4.7	14.9	20.1	11.4
1999	8.6	12.1	6.0	7.4	10.5	5.0	13.0	18.2	9.8
2000	8.1	11.7	5.4	6.8	9.8	4.5	12.8	19.8	8.2
2001	7.7	11.2	5.1	6.4	9.6	4.0	12.9	18.2	9.0
2002	7.9	11.2	5.4	6.7	9.8	4.3	12.8	15.4	10.8
2003	7.7	10.7	5.4	6.5	9.2	4.3	13.0	17.7	9.7
2004	7.8	11.1	5.2	6.8	9.8	4.5	10.8	16.2	7.3
2005	7.2	10.4	4.8	6.3	9.0	4.1	10.9	17.3	6.9
1975-2005	9.4	13.8	6.3	8.2	12.2	5.4	14.9	22.0	9.9

^a SEER 9 areas (San Francisco, Connecticut, Detroit, Hawaii, Iowa, New Mexico, Seattle, Utah, and Atlanta). Rates are per 100,000 and are age-adjusted to the 2000 US Std Population (19 age groups - Census P25-1130).
 - Statistic not shown. Rate based on less than 16 cases for the time interval.

Table XXIV-3
STOMACH CANCER (Invasive)

AGE-ADJUSTED U.S. DEATH^a RATES BY YEAR, RACE AND SEX

	<u>All Races</u>			<u>Whites</u>			<u>Blacks</u>		
	<u>Total</u>	<u>Males</u>	<u>Females</u>	<u>Total</u>	<u>Males</u>	<u>Females</u>	<u>Total</u>	<u>Males</u>	<u>Females</u>
<u>AGE-ADJUSTED RATES</u>									
<u>YEAR OF DEATH:</u>									
1975	8.5	12.3	5.9	7.9	11.4	5.6	13.9	21.0	8.6
1976	8.3	12.0	5.7	7.7	11.2	5.4	13.5	20.2	8.6
1977	7.9	11.5	5.4	7.3	10.7	5.0	13.4	19.5	9.0
1978	7.7	11.0	5.5	7.2	10.2	5.1	12.6	18.7	8.3
1979	7.6	11.0	5.2	7.0	10.2	4.8	12.9	18.7	8.7
1980	7.4	10.6	5.1	6.8	9.8	4.8	12.2	18.3	8.0
1981	7.3	10.6	5.0	6.7	9.8	4.6	12.5	18.1	8.6
1982	7.0	10.3	4.9	6.5	9.4	4.5	12.2	19.2	7.4
1983	6.8	9.9	4.8	6.2	9.0	4.4	12.3	18.4	8.1
1984	6.8	9.9	4.7	6.2	9.1	4.3	11.9	17.9	7.9
1985	6.5	9.5	4.4	6.0	8.8	4.1	11.5	17.0	7.8
1986	6.4	9.4	4.2	5.8	8.6	3.8	11.4	17.4	7.4
1987	6.2	9.1	4.2	5.6	8.3	3.8	11.3	17.0	7.5
1988	6.1	8.8	4.2	5.5	7.9	3.8	11.0	17.0	7.1
1989	6.2	9.2	4.2	5.6	8.3	3.8	11.5	17.7	7.3
1990	6.1	8.9	4.2	5.4	8.0	3.7	11.5	17.2	7.7
1991	6.0	8.9	4.0	5.4	8.0	3.6	11.5	17.6	7.5
1992	5.6	8.1	3.9	5.0	7.3	3.4	10.7	15.6	7.5
1993	5.6	8.2	3.8	5.0	7.3	3.4	10.7	16.3	7.1
1994	5.4	7.9	3.7	4.8	7.0	3.3	10.3	15.4	7.0
1995	5.3	7.7	3.7	4.7	6.9	3.2	10.4	14.9	7.4
1996	5.1	7.4	3.5	4.5	6.6	3.1	10.0	15.1	6.8
1997	4.9	7.2	3.4	4.3	6.3	2.9	9.7	14.6	6.5
1998	4.8	6.8	3.4	4.3	6.1	3.0	9.3	13.7	6.4
1999	4.6	6.6	3.3	4.0	5.8	2.8	9.2	13.7	6.5
2000	4.5	6.4	3.2	4.0	5.6	2.8	8.9	12.8	6.5
2001	4.4	6.1	3.1	3.8	5.4	2.7	8.3	12.0	5.8
2002	4.2	5.9	3.0	3.7	5.3	2.5	8.4	12.0	6.1
2003	4.1	5.7	3.0	3.6	5.0	2.6	7.8	11.4	5.4
2004	4.0	5.5	2.8	3.5	4.9	2.5	7.6	11.2	5.2
2005	3.8	5.2	2.7	3.3	4.5	2.4	7.2	10.7	5.0
1975-2005	5.8	8.3	4.0	5.2	7.5	3.6	10.5	15.7	7.1

^a US Mortality Files, National Center for Health Statistics, Centers for Disease Control and Prevention. Rates are per 100,000 and are age-adjusted to the 2000 US Std Population (19 age groups - Census P25-1130).

- Statistic not shown. Rate based on less than 16 cases for the time interval.

Table XXIV-4
STOMACH CANCER (Invasive)

SEER INCIDENCE^a AND U.S. DEATH^b RATES, AGE-ADJUSTED AND AGE-SPECIFIC RATES, BY RACE AND SEX

	All Races			Whites			Blacks		
	Total	Males	Females	Total	Males	Females	Total	Males	Females
<u>SEER INCIDENCE</u>									
<u>AGE AT DIAGNOSIS</u>									
AGE-ADJUSTED RATES, 2001-2005									
All ages	8.0	11.3	5.5	7.0	10.0	4.7	12.4	17.4	8.9
Under 65	3.0	3.9	2.1	2.6	3.5	1.8	4.3	5.8	2.9
65 and over	42.8	62.1	29.3	37.2	54.8	24.8	68.3	96.9	50.4
All ages(IARC world std) ^c	4.9	6.8	3.3	4.3	6.1	2.8	7.4	10.5	5.2
AGE-SPECIFIC RATES, 2001-2005									
<1	-	-	-	-	-	-	-	-	-
1-4	-	-	-	-	-	-	-	-	-
5-9	-	-	-	-	-	-	-	-	-
10-14	-	-	-	-	-	-	-	-	-
15-19	-	-	-	-	-	-	-	-	-
20-24	0.2	0.2	0.2	0.2	0.2	-	-	-	-
25-29	0.5	0.6	0.4	0.4	0.5	0.3	0.5	-	-
30-34	1.0	1.0	1.0	0.9	1.0	0.8	1.0	-	1.0
35-39	1.7	1.9	1.6	1.6	1.8	1.5	1.7	2.1	1.4
40-44	2.8	3.2	2.4	2.4	2.8	2.0	4.3	5.3	3.4
45-49	5.0	6.4	3.6	4.4	5.8	3.1	6.6	8.6	4.8
50-54	7.6	9.9	5.4	6.7	8.8	4.6	11.1	15.1	7.7
55-59	11.8	16.2	7.7	10.4	14.5	6.5	16.9	23.8	11.2
60-64	17.9	25.8	10.6	16.0	23.4	9.0	29.0	42.7	18.0
65-69	27.8	40.5	16.9	24.3	35.6	14.3	42.0	64.8	24.5
70-74	37.6	53.4	24.9	32.8	47.5	20.7	57.2	78.4	42.3
75-79	47.5	69.4	31.9	41.1	61.7	26.4	76.1	111.2	54.4
80-84	58.3	87.0	40.4	51.5	76.9	35.7	90.2	136.2	65.0
85+	60.3	86.5	48.2	51.4	74.7	40.8	110.1	135.4	99.8
<u>U.S. MORTALITY</u>									
<u>AGE AT DEATH</u>									
AGE-ADJUSTED RATES, 2001-2005									
All ages	4.1	5.7	2.9	3.6	5.0	2.5	7.8	11.5	5.5
Under 65	1.3	1.8	0.9	1.1	1.5	0.8	2.5	3.6	1.6
65 and over	23.1	32.8	16.6	20.5	29.1	14.6	44.8	65.8	32.4
All ages(IARC world std) ^c	2.4	3.3	1.7	2.1	2.9	1.4	4.5	6.7	3.0
AGE-SPECIFIC RATES, 2001-2005									
<1	-	-	-	-	-	-	-	-	-
1-4	-	-	-	-	-	-	-	-	-
5-9	-	-	-	-	-	-	-	-	-
10-14	-	-	-	-	-	-	-	-	-
15-19	0.0	-	-	-	-	-	-	-	-
20-24	0.1	0.1	0.1	0.1	0.0	0.1	0.1	-	-
25-29	0.2	0.2	0.2	0.2	0.2	0.1	0.3	0.4	-
30-34	0.4	0.5	0.4	0.4	0.4	0.3	0.7	0.6	0.7
35-39	0.7	0.8	0.7	0.6	0.7	0.6	1.1	1.2	1.0
40-44	1.3	1.5	1.1	1.1	1.2	0.9	2.4	3.0	1.9
45-49	2.1	2.7	1.6	1.8	2.2	1.3	3.9	5.4	2.6
50-54	3.5	4.7	2.4	2.9	3.9	2.0	6.9	10.1	4.2
55-59	5.3	7.4	3.3	4.6	6.4	2.8	9.8	14.6	5.9
60-64	8.3	11.9	5.1	7.2	10.1	4.4	16.1	25.4	8.9
65-69	12.4	17.7	7.9	10.7	15.1	6.7	24.9	38.4	14.9
70-74	18.3	26.0	12.1	16.2	22.9	10.7	34.1	54.4	20.4
75-79	24.7	35.1	17.3	21.8	31.3	15.0	48.8	70.7	35.8
80-84	32.1	45.5	23.9	28.7	40.7	21.2	62.5	91.1	47.5
85+	43.4	61.5	35.5	39.1	56.0	31.7	83.6	112.3	72.5

^a SEER 17 areas. Rates are per 100,000 and are age-adjusted to the 2000 US Std Population (19 age groups - Census P25-1130), unless noted.

^b US Mortality Files, National Center for Health Statistics, Centers for Disease Control and Prevention. Rates are per 100,000 and are age-adjusted to the 2000 US Std Population (19 age groups - Census P25-1130), unless noted.

^c Rates are per 100,000 and are age-adjusted to the IARC world standard population.

- Statistic not shown. Rate based on less than 16 cases for the time interval.

Table XXIV-5
STOMACH CANCER (Invasive)

SURVIVAL RATES, BY RACE, SEX, DIAGNOSIS YEAR, STAGE AND AGE

	All Races			Whites			Blacks		
	Total	Males	Females	Total	Males	Females	Total	Males	Females
<u>5-YR RELATIVE SURVIVAL RATES</u>									
YEAR OF DIAGNOSIS:									
1960-1963 ^a	-	-	-	11	10	13	8	5	14
1970-1973 ^a	-	-	-	13	12	14	13	15	10
1975-1977 ^b	15.8	15.0	17.1	14.8	13.7	16.4	16.3	16.4	16.1
1978-1980 ^b	16.8	14.9	19.9	16.2	14.4	19.1	16.9	16.0	18.6
1981-1983 ^b	18.0	17.1	19.5	16.9	16.0	18.3	17.2	16.8	17.7
1984-1986 ^b	18.4	16.2	21.8	17.6	15.1	21.6	20.0	17.5	23.4
1987-1989 ^b	20.7	17.5	26.0	19.1	16.0	24.5	20.0	17.2	24.5
1990-1992 ^b	21.7	18.6	26.5	19.3	16.4	24.1	23.8	22.9	24.9
1993-1995 ^b	21.7	20.4	23.9	20.6	19.3	23.1	19.8	17.6	23.0
1996-2004 ^b	24.8 ^e	23.3 ^e	27.2 ^e	23.1 ^e	21.2 ^e	26.3 ^e	24.5 ^e	22.6 ^e	26.9 ^e
<u>5-YR PERIOD SURVIVAL RATES^{cd}</u>									
YEAR OF DIAGNOSIS:									
1996-2004	26.2	24.0	29.7	24.4	22.4	28.1	24.6	21.5	28.4
<u>STAGE DISTRIBUTION (%) 1996-2004^c</u>									
All Stages									
Number of cases	33,774	20,398	13,376	23,855	14,722	9,133	4,237	2,371	1,866
Percent	100%	100%	100%	100%	100%	100%	100%	100%	100%
Localized	24	23	26	23	22	25	24	22	27
Regional	30	31	27	29	30	26	28	30	26
Distant	35	36	33	36	37	34	34	37	31
Unstaged	12	10	14	12	10	15	13	11	16
<u>5-YR RELATIVE SURVIVAL RATES, 1996-2004^c</u>									
AGE AT DIAGNOSIS:									
<45	28.5	26.3	31.4	27.0	24.3	30.9	34.5	30.1	40.4
45-54	27.3	24.8	32.2	24.5	21.9	29.9	30.1	26.0	37.1
55-64	25.3	24.0	28.2	23.0	22.0	25.4	24.4	19.9	32.8
65-74	25.3	23.4	28.5	23.2	21.0	27.4	23.0	22.1	24.1
75+	21.3	19.6	23.1	20.3	19.1	21.7	14.7	11.4	16.8
Under 65	26.6	24.7	30.4	24.2	22.4	28.2	28.9	24.3	36.7
65 and over	23.3	21.7	25.4	21.8	20.2	24.1	19.3	18.1	20.3
STAGE:									
All Stages	24.7	23.1	27.2	22.8	21.2	25.5	24.1	21.6	27.2
Localized	60.7	58.1	64.4	58.1	54.9	62.8	56.2	53.9	58.5
Regional	24.8	23.9	26.3	22.6	22.1	23.7	26.3	24.6	28.0
Distant	3.7	3.5	3.9	3.4	3.3	3.6	3.3	2.5	4.5
Unstaged	14.9	12.4	17.7	13.9	11.2	17.3	13.7	11.3	15.7

^a Rates are based on End Results data from a series of hospital registries and one population-based registry.
^b Rates are from the SEER 9 areas (San Francisco, Connecticut, Detroit, Hawaii, Iowa, New Mexico, Seattle, Utah, Atlanta).
Rates are based on follow-up of patients into 2005.
^c Rates are from the SEER 17 areas (San Francisco, Connecticut, Detroit, Hawaii, Iowa, New Mexico, Seattle, Utah, Atlanta, San Jose-Monterey, Los Angeles, Alaska Native Registry, Rural Georgia, California excluding SF/SJM/LA, Kentucky, Louisiana and New Jersey). California excluding SF/SJM/LA, Kentucky, Louisiana, and New Jersey contribute cases for diagnosis years 2000-2004. The remaining 13 SEER Areas contribute cases for the entire period 1996-2004. Rates are based on follow-up of patients into 2005.
^d Period survival provides a more up-to-date estimate of survival by piecing together the most recent conditional survival estimates from several cohorts. It is computed here using three calendar year blocks (2002-2004: 0-1 year survival), (2001-2003: 1-2 year survival), (2000-2002: 2-3 year survival), (1999-2001: 3-4 year survival), (1998-2000: 4-5 years survival).
^e The difference in rates between 1975-1977 and 1996-2004 is statistically significant (p<.05).
^f The standard error of the survival rate is between 5 and 10 percentage points.
^g The standard error of the survival rate is greater than 10 percentage points.
- Statistic could not be calculated due to fewer than 16 cases during the time period.

Table XXIV-6
STOMACH CANCER (Invasive)

SURVIVAL RATES^a

By Year of Diagnosis

All Races, Males and Females

Year of Diagnosis

	1975- 1979	1980- 1984	1985	1986	1987	1988	1989	1990	1991	1992	1993	1994	1995	1996	1997	1998	1999	2000	2001	2002	2003	2004
Relative Survival Rates (SEER ^b)																						
1-year	39.8	42.9	43.8	45.2	43.8	46.9	46.6	46.5	44.7	47.4	45.3	46.3	47.2	46.7	46.0	49.2	47.7	48.5	49.8	50.7	51.5	53.3
2-year	25.5	27.5	28.8	29.1	27.6	32.7	31.8	32.6	30.7	32.7	31.0	33.6	32.0	32.4	33.3	34.4	34.6	33.2	34.1	35.8	39.1	
3-year	20.2	21.9	22.4	23.6	22.0	26.4	25.6	25.4	25.3	26.5	24.5	26.9	27.0	27.4	26.6	29.0	28.4	27.6	29.6	30.7		
4-year	17.8	19.0	19.7	21.5	19.6	22.8	22.5	22.8	22.8	24.2	21.4	24.4	23.7	24.1	23.9	26.1	25.7	25.2	28.4			
5-year	16.3	17.5	18.1	20.3	18.8	22.0	21.3	20.7	21.4	22.8	20.1	22.5	22.4	22.7	22.5	23.9	24.4	23.6				
6-year	15.4	16.8	17.2	19.4	18.1	20.9	20.3	18.9	19.9	21.8	19.2	20.7	21.3	20.9	21.4	23.0	22.7					
7-year	14.9	16.1	17.0	19.4	16.6	20.3	19.0	18.3	19.4	20.5	18.2	19.8	20.2	20.3	20.7	22.4						
8-year	14.3	15.5	16.2	19.0	16.0	19.8	18.7	17.9	18.9	19.3	17.2	18.7	20.2	20.1	20.2							
9-year	14.0	15.2	15.9	18.5	15.3	19.8	18.0	16.8	18.1	18.5	16.5	18.7	20.0	19.8								
10-year	13.7	15.1	15.3	17.9	14.5	19.1	17.3	16.2	17.7	17.9	15.8	17.9	19.1									
11-year	13.3	14.7	15.1	17.3	14.0	19.1	16.9	16.0	17.7	17.1	15.5	17.7										
12-year	13.2	14.3	15.1	17.2	13.6	18.6	16.3	15.6	17.7	16.7	15.4											
13-year	12.9	14.3	15.1	16.5	13.2	18.5	16.3	15.6	17.4	16.7												
14-year	12.6	14.3	15.1	16.3	12.9	18.4	16.2	15.6	17.2													
15-year	12.2	13.9	15.1	15.9	12.6	18.4	16.2	15.6														
16-year	12.0	13.5	15.1	15.5	12.4	17.8	16.2															
17-year	11.9	13.4	15.0	15.2	12.4	17.8																
18-year	11.5	13.1	14.7	15.2	12.4																	
19-year	11.4	13.1	14.0	15.2																		
20-year	11.2	12.7	12.7																			

^a Survival rates are relative rates expressed as percents.

^b Rates are from the SEER 9 areas (San Francisco, Connecticut, Detroit, Hawaii, Iowa, New Mexico, Seattle, Utah, and Atlanta).

Table XXIV-7
STOMACH CANCER (Invasive)

SURVIVAL RATES^a

By Year of Diagnosis

All Races, Males

Year of Diagnosis

	1975- 1979	1980- 1984	1985	1986	1987	1988	1989	1990	1991	1992	1993	1994	1995	1996	1997	1998	1999	2000	2001	2002	2003	2004
Relative Survival Rates (SEER ^b)																						
1-year	39.3	42.3	43.0	42.5	42.5	46.2	47.0	46.2	42.8	45.7	43.8	46.5	48.0	44.7	46.2	50.7	47.4	47.6	50.8	49.0	51.3	53.8
2-year	24.5	26.5	27.8	26.8	25.0	30.7	30.8	31.5	27.2	30.5	28.5	32.9	32.0	29.1	31.8	36.3	34.1	33.3	33.7	33.3	37.2	
3-year	19.1	20.9	21.1	21.2	19.6	24.1	23.5	24.1	21.7	24.6	22.9	26.0	26.0	24.5	25.0	30.1	27.7	27.5	29.2	27.5		
4-year	16.6	17.8	18.4	18.8	17.0	19.8	19.4	20.8	18.7	22.3	20.1	23.7	22.6	21.7	21.9	26.5	24.8	24.7	27.5			
5-year	15.1	16.1	16.1	17.5	15.8	18.6	18.1	18.3	16.6	20.9	18.6	21.6	21.0	20.5	20.1	24.3	23.2	22.7				
6-year	14.1	15.3	15.1	16.7	15.3	17.9	17.2	17.1	14.8	19.5	17.5	19.6	19.9	19.2	18.8	23.4	21.6					
7-year	13.6	14.6	14.5	16.6	14.0	17.3	15.8	16.4	13.9	18.3	16.0	18.6	18.9	18.9	18.0	22.7						
8-year	13.2	14.1	13.9	16.2	13.2	17.0	15.3	15.5	13.1	17.1	14.8	17.6	18.9	18.9	17.9							
9-year	13.1	13.9	13.4	15.8	12.9	16.6	14.4	14.9	12.6	16.1	14.2	17.4	18.9	18.1								
10-year	12.7	13.8	12.6	15.7	12.2	16.2	13.7	14.1	12.1	15.5	13.0	16.4	17.8									
11-year	12.4	13.4	12.2	15.3	11.6	16.0	13.2	13.4	12.1	15.1	13.0	16.3										
12-year	12.3	12.8	12.0	15.2	11.2	15.8	12.5	13.1	12.1	14.7	12.7											
13-year	12.3	12.8	12.0	15.2	11.2	15.6	12.4	13.1	11.4	14.7												
14-year	11.6	12.8	11.8	14.9	10.4	15.6	12.1	13.0	11.0													
15-year	11.2	12.4	11.8	14.8	9.8	15.6	11.8	12.6														
16-year	11.0	11.9	11.7	14.4	9.2	15.1	11.8															
17-year	10.8	11.7	11.4	14.4	9.2	15.1																
18-year	10.2	11.4	11.1	14.4	9.2																	
19-year	10.2	11.4	10.1	14.1																		
20-year	10.2	11.1	9.6																			

^a

Survival rates are relative rates expressed as percents.

^b

Rates are from the SEER 9 areas (San Francisco, Connecticut, Detroit, Hawaii, Iowa, New Mexico, Seattle, Utah, and Atlanta).

Table XXIV-8
STOMACH CANCER (Invasive)

SURVIVAL RATES^a

By Year of Diagnosis

All Races, Females

Year of Diagnosis

	1975- 1979	1980- 1984	1985	1986	1987	1988	1989	1990	1991	1992	1993	1994	1995	1996	1997	1998	1999	2000	2001	2002	2003	2004
Relative Survival Rates (SEER ^b)																						
1-year	40.7	43.8	45.2	49.7	45.9	48.1	45.8	47.0	47.8	50.3	47.7	46.0	45.7	50.0	45.7	46.9	48.1	49.9	48.1	53.1	51.8	52.6
2-year	27.1	29.1	30.4	32.9	31.8	36.2	33.6	34.5	36.0	36.3	35.2	34.9	32.1	37.8	35.8	31.4	35.5	33.1	34.9	39.5	42.3	
3-year	22.1	23.5	24.7	27.6	25.9	30.5	29.3	27.7	31.0	29.7	27.1	28.4	28.5	32.4	29.2	27.2	29.4	27.6	30.2	35.4		
4-year	19.8	21.1	21.9	25.9	23.7	28.0	27.8	26.0	29.0	27.3	23.4	25.6	25.6	28.2	27.1	25.4	27.2	26.1	29.9			
5-year	18.1	19.7	21.2	24.9	23.4	27.8	26.6	24.5	28.8	25.8	22.5	24.1	24.9	26.3	26.2	23.4	26.2	25.0				
6-year	17.3	19.2	20.5	23.9	22.3	26.2	25.7	21.8	27.7	25.8	22.0	22.5	23.8	23.7	25.3	21.9	24.3					
7-year	17.0	18.5	20.5	23.9	20.7	25.5	24.6	21.2	27.6	24.0	21.5	21.9	22.6	22.4	24.8	21.8						
8-year	16.0	17.7	20.1	23.2	20.4	24.6	24.4	21.2	27.6	22.8	21.0	20.6	22.4	21.7	23.8							
9-year	15.4	17.4	19.7	22.7	19.3	24.6	24.4	19.4	26.8	22.3	20.4	20.6	21.4	21.7								
10-year	15.3	17.2	19.6	21.5	18.0	24.1	23.7	19.4	26.2	22.0	20.4	20.3	21.2									
11-year	14.8	16.7	19.6	20.5	17.6	24.1	23.4	19.4	26.2	20.5	19.8	20.0										
12-year	14.5	16.6	19.6	20.1	17.2	23.4	23.2	19.4	26.2	20.0	19.8											
13-year	14.0	16.5	19.6	18.4	16.6	23.2	23.2	19.4	26.2	20.0												
14-year	13.9	16.5	19.6	18.3	16.5	22.6	23.2	19.4	26.2													
15-year	13.8	16.1	19.6	17.5	16.5	22.6	23.2	19.4														
16-year	13.5	15.9	19.6	16.9	16.5	22.2	23.2															
17-year	13.4	15.8	19.6	16.4	16.5	22.2																
18-year	13.4	15.7	19.6	16.4	16.5																	
19-year	13.1	15.5	19.4	16.4																		
20-year	12.5	15.1	17.1																			

^a Survival rates are relative rates expressed as percents.

^b Rates are from the SEER 9 areas (San Francisco, Connecticut, Detroit, Hawaii, Iowa, New Mexico, Seattle, Utah, and Atlanta).

Table XXIV-9
STOMACH CANCER (Invasive)

Risk of Being Diagnosed With Cancer in 10, 20 and 30 Years, Lifetime Risk of Being Diagnosed with Cancer, and
Lifetime Risk of Dying from Cancer Given Cancer Free At Current Age
Both Sexes, 2003-2005 By Race/Ethnicity

Race/ Ethnicity	Current Age	Risk of Being Diagnosed with Cancer			Risk of Dying from Cancer	
		+10 yrs Percent (95% C.I.)	+20 yrs Percent (95% C.I.)	+30 yrs Percent (95% C.I.)	Eventually Percent (95% C.I.)	Eventually Percent (95% C.I.)
All Races	0	0.00 (0.00, 0.00)	0.00 (0.00, 0.00)	0.00 (0.00, 0.00)	0.89 (0.87, 0.90)	0.45 (0.45, 0.46)
	10	0.00 (0.00, 0.00)	0.00 (0.00, 0.00)	0.02 (0.02, 0.02)	0.90 (0.88, 0.91)	0.46 (0.45, 0.46)
	20	0.00 (0.00, 0.00)	0.02 (0.02, 0.02)	0.06 (0.05, 0.06)	0.90 (0.89, 0.91)	0.46 (0.46, 0.47)
	30	0.01 (0.01, 0.02)	0.05 (0.05, 0.06)	0.15 (0.14, 0.15)	0.91 (0.89, 0.92)	0.46 (0.46, 0.47)
	40	0.04 (0.04, 0.04)	0.13 (0.13, 0.14)	0.33 (0.32, 0.33)	0.90 (0.89, 0.92)	0.46 (0.46, 0.47)
	50	0.10 (0.09, 0.10)	0.29 (0.29, 0.30)	0.59 (0.57, 0.60)	0.89 (0.87, 0.90)	0.46 (0.45, 0.46)
	60	0.21 (0.21, 0.22)	0.52 (0.51, 0.53)	0.77 (0.76, 0.79)	0.84 (0.83, 0.86)	0.44 (0.44, 0.45)
	70	0.36 (0.35, 0.37)	0.65 (0.63, 0.66)	- (- , -)	0.73 (0.71, 0.74)	0.41 (0.40, 0.41)
80	0.41 (0.40, 0.42)	- (- , -)	- (- , -)	0.52 (0.51, 0.54)	0.33 (0.32, 0.33)	
White	0	0.00 (0.00, 0.00)	0.00 (0.00, 0.00)	0.00 (0.00, 0.00)	0.78 (0.76, 0.79)	0.40 (0.40, 0.41)
	10	0.00 (0.00, 0.00)	0.00 (0.00, 0.00)	0.02 (0.02, 0.02)	0.79 (0.77, 0.80)	0.41 (0.40, 0.41)
	20	0.00 (0.00, 0.00)	0.02 (0.02, 0.02)	0.05 (0.05, 0.05)	0.79 (0.77, 0.80)	0.41 (0.40, 0.41)
	30	0.01 (0.01, 0.01)	0.05 (0.05, 0.05)	0.13 (0.13, 0.13)	0.79 (0.78, 0.81)	0.41 (0.41, 0.42)
	40	0.03 (0.03, 0.04)	0.12 (0.11, 0.12)	0.29 (0.28, 0.30)	0.79 (0.77, 0.80)	0.41 (0.41, 0.42)
	50	0.09 (0.08, 0.09)	0.26 (0.25, 0.27)	0.52 (0.51, 0.53)	0.77 (0.76, 0.79)	0.41 (0.40, 0.41)
	60	0.19 (0.18, 0.19)	0.46 (0.45, 0.47)	0.68 (0.66, 0.69)	0.73 (0.71, 0.74)	0.39 (0.39, 0.40)
	70	0.31 (0.30, 0.32)	0.56 (0.55, 0.58)	- (- , -)	0.62 (0.61, 0.64)	0.36 (0.36, 0.37)
80	0.36 (0.34, 0.37)	- (- , -)	- (- , -)	0.44 (0.43, 0.46)	0.29 (0.29, 0.30)	
Black	0	0.00 (0.00, 0.00)	0.00 (0.00, 0.00)	0.00 (0.00, 0.00)	1.08 (1.03, 1.13)	0.71 (0.69, 0.73)
	10	0.00 (0.00, 0.00)	0.00 (0.00, 0.00)	0.02 (0.01, 0.02)	1.10 (1.05, 1.16)	0.73 (0.71, 0.75)
	20	0.00 (0.00, 0.00)	0.02 (0.01, 0.02)	0.07 (0.06, 0.08)	1.11 (1.06, 1.16)	0.73 (0.71, 0.75)
	30	0.02 (0.01, 0.02)	0.07 (0.06, 0.07)	0.18 (0.17, 0.20)	1.13 (1.07, 1.18)	0.74 (0.72, 0.76)
	40	0.05 (0.05, 0.06)	0.17 (0.16, 0.19)	0.43 (0.41, 0.46)	1.14 (1.08, 1.19)	0.75 (0.73, 0.77)
	50	0.13 (0.12, 0.14)	0.40 (0.38, 0.43)	0.76 (0.72, 0.80)	1.14 (1.09, 1.20)	0.76 (0.73, 0.78)
	60	0.31 (0.29, 0.34)	0.71 (0.67, 0.75)	1.03 (0.98, 1.09)	1.14 (1.08, 1.21)	0.76 (0.73, 0.78)
	70	0.50 (0.47, 0.54)	0.91 (0.85, 0.97)	- (- , -)	1.05 (0.98, 1.12)	0.72 (0.69, 0.75)
80	0.65 (0.59, 0.71)	- (- , -)	- (- , -)	0.87 (0.80, 0.96)	0.62 (0.59, 0.66)	

Devcan Version 7.0.0, April 2008, National Cancer Institute (<http://srab.cancer.gov/devcan/>).

Source: Incidence data are from the SEER 17 areas (San Francisco, Connecticut, Detroit, Hawaii, Iowa, New Mexico, Seattle, Utah, Atlanta, San Jose-Monterey, Los Angeles, Alaska Native Registry, Rural Georgia, California excluding SF/SJM/LA, Kentucky, Louisiana and New Jersey). Mortality data are from the NCHS public use data file for the total US.

- Statistic could not be calculated.

A percent or confidence interval value of 0.00 represents a value that is below 0.005.

Table XXIV-9 - continued
 STOMACH CANCER (Invasive)

Risk of Being Diagnosed With Cancer in 10, 20 and 30 Years, Lifetime Risk of Being Diagnosed with Cancer, and
 Lifetime Risk of Dying from Cancer Given Cancer Free At Current Age
 Both Sexes, 2003-2005 By Race/Ethnicity

Race/ Ethnicity	Current Age	Risk of Being Diagnosed with Cancer				Risk of Dying from Cancer	
		+10 yrs Percent (95% C.I.)	+20 yrs Percent (95% C.I.)	+30 yrs Percent (95% C.I.)	Eventually Percent (95% C.I.)	Eventually Percent (95% C.I.)	
Asian/ Pacific Islander	0	0.00 (0.00, 0.00)	0.00 (0.00, 0.00)	0.01 (0.00, 0.01)	2.07 (1.96, 2.18)	1.27 (1.19, 1.36)	
	10	0.00 (0.00, 0.00)	0.01 (0.00, 0.01)	0.03 (0.02, 0.03)	2.08 (1.98, 2.20)	1.28 (1.20, 1.37)	
	20	0.01 (0.00, 0.01)	0.03 (0.02, 0.03)	0.09 (0.08, 0.10)	2.09 (1.98, 2.20)	1.29 (1.21, 1.38)	
	30	0.02 (0.02, 0.03)	0.08 (0.08, 0.09)	0.23 (0.21, 0.24)	2.09 (1.99, 2.21)	1.29 (1.21, 1.38)	
	40	0.06 (0.06, 0.07)	0.21 (0.19, 0.22)	0.54 (0.50, 0.57)	2.08 (1.98, 2.20)	1.28 (1.20, 1.38)	
	50	0.15 (0.13, 0.16)	0.48 (0.45, 0.51)	1.08 (1.02, 1.13)	2.05 (1.94, 2.17)	1.27 (1.18, 1.36)	
	60	0.34 (0.32, 0.37)	0.96 (0.91, 1.02)	1.65 (1.57, 1.73)	1.97 (1.86, 2.09)	1.24 (1.15, 1.33)	
	70	0.67 (0.63, 0.72)	1.41 (1.34, 1.50)	- (- , -)	1.76 (1.65, 1.89)	1.16 (1.07, 1.26)	
	80	0.92 (0.85, 1.00)	- (- , -)	- (- , -)	1.35 (1.23, 1.49)	0.99 (0.89, 1.11)	
American Indian/ Alaska Native ^a	0	0.00 (0.00, 0.02)	0.00 (0.00, 0.02)	0.00 (0.00, 0.03)	1.21 (0.94, 1.64)	0.67 (0.55, 0.82)	
	10	0.00 (0.00, 0.01)	0.00 (0.00, 0.02)	0.03 (0.01, 0.06)	1.24 (0.96, 1.67)	0.68 (0.56, 0.84)	
	20	0.00 (0.00, 0.02)	0.03 (0.01, 0.06)	0.08 (0.05, 0.12)	1.25 (0.97, 1.68)	0.69 (0.57, 0.85)	
	30	0.03 (0.01, 0.05)	0.08 (0.05, 0.12)	0.22 (0.16, 0.29)	1.26 (0.98, 1.71)	0.70 (0.58, 0.86)	
	40	0.06 (0.03, 0.09)	0.20 (0.15, 0.27)	0.45 (0.34, 0.57)	1.27 (0.98, 1.73)	0.70 (0.58, 0.87)	
	50	0.15 (0.10, 0.21)	0.41 (0.31, 0.53)	0.73 (0.57, 0.93)	1.27 (0.97, 1.74)	0.69 (0.57, 0.87)	
	60	0.28 (0.19, 0.39)	0.63 (0.47, 0.82)	1.00 (0.77, 1.29)	1.20 (0.89, 1.71)	0.70 (0.56, 0.89)	
	70	0.41 (0.28, 0.59)	0.85 (0.61, 1.16)	- (- , -)	1.08 (0.74, 1.67)	0.64 (0.49, 0.86)	
	80	0.61 (0.37, 0.96)	- (- , -)	- (- , -)	0.94 (0.53, 1.72)	0.51 (0.32, 0.81)	
Hispanic ^b	0	0.00 (0.00, 0.00)	0.00 (0.00, 0.00)	0.01 (0.00, 0.01)	1.57 (1.49, 1.65)	0.87 (0.83, 0.91)	
	10	0.00 (0.00, 0.00)	0.01 (0.00, 0.01)	0.03 (0.02, 0.03)	1.58 (1.51, 1.67)	0.88 (0.84, 0.92)	
	20	0.01 (0.00, 0.01)	0.03 (0.02, 0.03)	0.09 (0.08, 0.09)	1.59 (1.51, 1.68)	0.89 (0.85, 0.93)	
	30	0.02 (0.02, 0.03)	0.08 (0.08, 0.09)	0.22 (0.21, 0.23)	1.60 (1.52, 1.68)	0.89 (0.85, 0.93)	
	40	0.06 (0.05, 0.07)	0.20 (0.19, 0.21)	0.49 (0.47, 0.52)	1.59 (1.51, 1.68)	0.89 (0.85, 0.93)	
	50	0.14 (0.13, 0.15)	0.44 (0.42, 0.47)	0.94 (0.90, 0.99)	1.57 (1.49, 1.66)	0.88 (0.84, 0.92)	
	60	0.32 (0.29, 0.34)	0.84 (0.79, 0.88)	1.30 (1.23, 1.36)	1.50 (1.41, 1.59)	0.84 (0.80, 0.89)	
	70	0.58 (0.55, 0.62)	1.10 (1.03, 1.16)	- (- , -)	1.32 (1.23, 1.42)	0.77 (0.73, 0.82)	
	80	0.67 (0.61, 0.74)	- (- , -)	- (- , -)	0.97 (0.87, 1.08)	0.62 (0.57, 0.67)	

Devcan Version 7.0.0, April 2008, National Cancer Institute (<http://srab.cancer.gov/devcan/>).

Source: Incidence data are from the SEER 17 areas (San Francisco, Connecticut, Detroit, Hawaii, Iowa, New Mexico, Seattle, Utah, Atlanta, San Jose-Monterey, Los Angeles, Alaska Native Registry, Rural Georgia, California excluding SF/SJM/LA, Kentucky, Louisiana and New Jersey). Mortality data are from the NCHS public use data file for the total US.

^a Underlying incidence and mortality data for American Indian/Alaska Native are based on the CHSDA (Contract Health Service Delivery Area) counties.

^b Hispanic is not mutually exclusive from whites, blacks, Asian/Pacific Islanders, and American Indians/Alaska Natives. Underlying incidence data for Hispanics are based on NHIA and exclude cases from the Alaska Native Registry and Kentucky. Underlying mortality data for Hispanics exclude deaths from Minnesota, New Hampshire and North Dakota.

- Statistic could not be calculated.

A percent or confidence interval value of 0.00 represents a value that is below 0.005.

Table XXIV-9 - continued
 STOMACH CANCER (Invasive)

Risk of Being Diagnosed With Cancer in 10, 20 and 30 Years, Lifetime Risk of Being Diagnosed with Cancer, and
 Lifetime Risk of Dying from Cancer Given Cancer Free At Current Age
 Males, 2003-2005 By Race/Ethnicity

Race/ Ethnicity	Current Age	Risk of Being Diagnosed with Cancer						Risk of Dying from Cancer	
		+10 yrs Percent (95% C.I.)	+20 yrs Percent (95% C.I.)	+30 yrs Percent (95% C.I.)	Eventually Percent (95% C.I.)	Eventually Percent (95% C.I.)			
All Races	0	0.00 (0.00, 0.00)	0.00 (0.00, 0.00)	0.00 (0.00, 0.00)	1.11 (1.09, 1.14)	0.55 (0.54, 0.56)			
	10	0.00 (0.00, 0.00)	0.00 (0.00, 0.00)	0.02 (0.02, 0.02)	1.13 (1.11, 1.15)	0.56 (0.55, 0.57)			
	20	0.00 (0.00, 0.00)	0.02 (0.02, 0.02)	0.07 (0.06, 0.07)	1.13 (1.11, 1.16)	0.56 (0.55, 0.57)			
	30	0.02 (0.01, 0.02)	0.06 (0.06, 0.07)	0.18 (0.18, 0.19)	1.15 (1.12, 1.17)	0.57 (0.56, 0.58)			
	40	0.05 (0.05, 0.05)	0.17 (0.16, 0.18)	0.44 (0.43, 0.45)	1.15 (1.13, 1.17)	0.57 (0.56, 0.58)			
	50	0.13 (0.12, 0.13)	0.41 (0.39, 0.42)	0.79 (0.77, 0.81)	1.14 (1.12, 1.17)	0.57 (0.56, 0.58)			
	60	0.30 (0.29, 0.31)	0.72 (0.70, 0.74)	1.02 (1.00, 1.05)	1.10 (1.07, 1.12)	0.56 (0.55, 0.57)			
	70	0.50 (0.48, 0.51)	0.86 (0.84, 0.89)	- (- , -)	0.95 (0.92, 0.97)	0.51 (0.50, 0.52)			
80	0.56 (0.54, 0.58)	- (- , -)	- (- , -)	0.69 (0.66, 0.72)	0.42 (0.41, 0.43)				
White	0	0.00 (0.00, 0.00)	0.00 (0.00, 0.00)	0.00 (0.00, 0.00)	0.99 (0.97, 1.01)	0.49 (0.48, 0.50)			
	10	0.00 (0.00, 0.00)	0.00 (0.00, 0.00)	0.02 (0.02, 0.02)	1.00 (0.98, 1.02)	0.50 (0.49, 0.51)			
	20	0.00 (0.00, 0.00)	0.02 (0.02, 0.02)	0.06 (0.06, 0.06)	1.01 (0.98, 1.03)	0.50 (0.49, 0.51)			
	30	0.01 (0.01, 0.02)	0.06 (0.05, 0.06)	0.17 (0.16, 0.17)	1.01 (0.99, 1.04)	0.51 (0.50, 0.51)			
	40	0.04 (0.04, 0.05)	0.15 (0.15, 0.16)	0.39 (0.38, 0.40)	1.02 (0.99, 1.04)	0.51 (0.50, 0.52)			
	50	0.11 (0.11, 0.12)	0.36 (0.35, 0.37)	0.71 (0.69, 0.73)	1.01 (0.98, 1.03)	0.51 (0.50, 0.52)			
	60	0.26 (0.25, 0.28)	0.64 (0.62, 0.66)	0.90 (0.88, 0.93)	0.96 (0.93, 0.99)	0.49 (0.48, 0.50)			
	70	0.44 (0.43, 0.46)	0.76 (0.73, 0.78)	- (- , -)	0.82 (0.80, 0.85)	0.45 (0.44, 0.46)			
80	0.48 (0.46, 0.50)	- (- , -)	- (- , -)	0.58 (0.56, 0.61)	0.37 (0.36, 0.39)				
Black	0	0.00 (0.00, 0.00)	0.00 (0.00, 0.00)	0.00 (0.00, 0.01)	1.28 (1.20, 1.36)	0.85 (0.82, 0.88)			
	10	0.00 (0.00, 0.00)	0.00 (0.00, 0.01)	0.02 (0.01, 0.03)	1.31 (1.23, 1.40)	0.88 (0.85, 0.91)			
	20	0.00 (0.00, 0.01)	0.02 (0.01, 0.03)	0.08 (0.07, 0.09)	1.32 (1.24, 1.41)	0.88 (0.85, 0.92)			
	30	0.02 (0.01, 0.02)	0.08 (0.07, 0.09)	0.24 (0.22, 0.26)	1.35 (1.27, 1.44)	0.90 (0.87, 0.94)			
	40	0.06 (0.05, 0.08)	0.23 (0.21, 0.25)	0.60 (0.55, 0.65)	1.38 (1.30, 1.47)	0.92 (0.89, 0.96)			
	50	0.18 (0.16, 0.20)	0.57 (0.53, 0.62)	1.01 (0.94, 1.08)	1.41 (1.32, 1.50)	0.94 (0.90, 0.97)			
	60	0.46 (0.41, 0.51)	0.96 (0.89, 1.04)	1.31 (1.22, 1.41)	1.43 (1.33, 1.54)	0.95 (0.91, 0.99)			
	70	0.68 (0.61, 0.75)	1.15 (1.05, 1.25)	- (- , -)	1.30 (1.19, 1.43)	0.90 (0.86, 0.95)			
80	0.86 (0.75, 0.98)	- (- , -)	- (- , -)	1.14 (0.99, 1.31)	0.78 (0.72, 0.84)				

Devcan Version 7.0.0, April 2008, National Cancer Institute (<http://srab.cancer.gov/devcan/>).

Source: Incidence data are from the SEER 17 areas (San Francisco, Connecticut, Detroit, Hawaii, Iowa, New Mexico, Seattle, Utah, Atlanta, San Jose-Monterey, Los Angeles, Alaska Native Registry, Rural Georgia, California excluding SF/SJM/LA, Kentucky, Louisiana and New Jersey). Mortality data are from the NCHS public use data file for the total US.

- Statistic could not be calculated.

A percent or confidence interval value of 0.00 represents a value that is below 0.005.

Table XXIV-9 - continued
 STOMACH CANCER (Invasive)

Risk of Being Diagnosed With Cancer in 10, 20 and 30 Years, Lifetime Risk of Being Diagnosed with Cancer, and
 Lifetime Risk of Dying from Cancer Given Cancer Free At Current Age
 Males, 2003-2005 By Race/Ethnicity

Race/ Ethnicity	Current Age	Risk of Being Diagnosed with Cancer				Risk of Dying from Cancer	
		+10 yrs Percent (95% C.I.)	+20 yrs Percent (95% C.I.)	+30 yrs Percent (95% C.I.)	Eventually Percent (95% C.I.)	Eventually Percent (95% C.I.)	
Asian/ Pacific Islander	0	0.00 (0.00, 0.00)	0.00 (0.00, 0.00)	0.00 (0.00, 0.01)	2.51 (2.35, 2.69)	1.54 (1.41, 1.68)	
	10	0.00 (0.00, 0.00)	0.00 (0.00, 0.01)	0.02 (0.02, 0.03)	2.53 (2.37, 2.71)	1.55 (1.43, 1.69)	
	20	0.00 (0.00, 0.01)	0.02 (0.02, 0.03)	0.09 (0.08, 0.11)	2.54 (2.38, 2.72)	1.56 (1.43, 1.70)	
	30	0.02 (0.01, 0.03)	0.09 (0.08, 0.10)	0.26 (0.24, 0.29)	2.55 (2.39, 2.73)	1.56 (1.44, 1.70)	
	40	0.07 (0.06, 0.08)	0.24 (0.22, 0.27)	0.69 (0.64, 0.75)	2.55 (2.39, 2.73)	1.56 (1.44, 1.70)	
	50	0.18 (0.16, 0.20)	0.64 (0.58, 0.69)	1.41 (1.32, 1.51)	2.53 (2.36, 2.71)	1.55 (1.43, 1.70)	
	60	0.48 (0.43, 0.53)	1.29 (1.20, 1.38)	2.16 (2.02, 2.30)	2.45 (2.28, 2.65)	1.52 (1.39, 1.67)	
	70	0.90 (0.83, 0.98)	1.87 (1.73, 2.01)	- (- , -)	2.19 (2.02, 2.40)	1.43 (1.29, 1.59)	
	80	1.26 (1.13, 1.41)	- (- , -)	- (- , -)	1.69 (1.50, 1.93)	1.23 (1.06, 1.42)	
American Indian/ Alaska Native ^a	0	0.00 (0.00, 0.05)	0.00 (0.00, 0.05)	0.00 (0.00, 0.05)	1.68 (1.18, 2.57)	0.80 (0.65, 1.06)	
	10	0.00 (0.00, 0.02)	0.00 (0.00, 0.02)	0.03 (0.01, 0.08)	1.71 (1.20, 2.62)	0.82 (0.66, 1.09)	
	20	0.00 (0.00, 0.02)	0.03 (0.01, 0.08)	0.10 (0.06, 0.17)	1.73 (1.22, 2.65)	0.83 (0.67, 1.10)	
	30	0.03 (0.01, 0.07)	0.10 (0.06, 0.17)	0.29 (0.20, 0.41)	1.77 (1.24, 2.71)	0.85 (0.69, 1.13)	
	40	0.08 (0.04, 0.13)	0.27 (0.18, 0.39)	0.63 (0.46, 0.85)	1.80 (1.26, 2.77)	0.87 (0.70, 1.16)	
	50	0.20 (0.13, 0.31)	0.59 (0.42, 0.81)	1.10 (0.82, 1.46)	1.82 (1.25, 2.85)	0.89 (0.71, 1.19)	
	60	0.42 (0.27, 0.64)	0.99 (0.70, 1.37)	1.44 (1.03, 2.00)	1.78 (1.17, 2.91)	0.92 (0.72, 1.26)	
	70	0.68 (0.42, 1.04)	1.22 (0.80, 1.83)	- (- , -)	1.62 (0.95, 2.96)	0.86 (0.64, 1.27)	
	80	0.81 (0.38, 1.55)	- (- , -)	- (- , -)	1.40 (0.56, 3.37)	0.69 (0.43, 1.27)	
Hispanic ^b	0	0.00 (0.00, 0.00)	0.00 (0.00, 0.00)	0.01 (0.00, 0.01)	1.82 (1.70, 1.96)	1.04 (0.99, 1.11)	
	10	0.00 (0.00, 0.00)	0.01 (0.00, 0.01)	0.03 (0.02, 0.03)	1.84 (1.72, 1.98)	1.06 (1.00, 1.13)	
	20	0.01 (0.00, 0.01)	0.03 (0.02, 0.03)	0.09 (0.08, 0.10)	1.85 (1.73, 1.99)	1.06 (1.00, 1.13)	
	30	0.02 (0.02, 0.03)	0.09 (0.08, 0.09)	0.25 (0.23, 0.27)	1.87 (1.74, 2.01)	1.07 (1.01, 1.14)	
	40	0.07 (0.06, 0.07)	0.23 (0.21, 0.25)	0.61 (0.56, 0.65)	1.87 (1.75, 2.02)	1.08 (1.02, 1.15)	
	50	0.17 (0.15, 0.19)	0.56 (0.52, 0.60)	1.17 (1.10, 1.25)	1.86 (1.73, 2.01)	1.08 (1.02, 1.15)	
	60	0.41 (0.38, 0.45)	1.07 (1.00, 1.15)	1.61 (1.51, 1.72)	1.81 (1.67, 1.96)	1.05 (0.99, 1.13)	
	70	0.76 (0.69, 0.83)	1.38 (1.27, 1.50)	- (- , -)	1.60 (1.46, 1.77)	0.99 (0.92, 1.07)	
	80	0.87 (0.76, 0.99)	- (- , -)	- (- , -)	1.18 (1.01, 1.40)	0.79 (0.70, 0.90)	

Devcan Version 7.0.0, April 2008, National Cancer Institute (<http://srab.cancer.gov/devcan/>).

Source: Incidence data are from the SEER 17 areas (San Francisco, Connecticut, Detroit, Hawaii, Iowa, New Mexico, Seattle, Utah, Atlanta, San Jose-Monterey, Los Angeles, Alaska Native Registry, Rural Georgia, California excluding SF/SJM/LA, Kentucky, Louisiana and New Jersey). Mortality data are from the NCHS public use data file for the total US.

^a Underlying incidence and mortality data for American Indian/Alaska Native are based on the CHSDA (Contract Health Service Delivery Area) counties.

^b Hispanic is not mutually exclusive from whites, blacks, Asian/Pacific Islanders, and American Indians/Alaska Natives. Underlying incidence data for Hispanics are based on NHIA and exclude cases from the Alaska Native Registry and Kentucky. Underlying mortality data for Hispanics exclude deaths from Minnesota, New Hampshire and North Dakota.

- Statistic could not be calculated.

A percent or confidence interval value of 0.00 represents a value that is below 0.005.

Table XXIV-9 - continued
 STOMACH CANCER (Invasive)

Risk of Being Diagnosed With Cancer in 10, 20 and 30 Years, Lifetime Risk of Being Diagnosed with Cancer, and
 Lifetime Risk of Dying from Cancer Given Cancer Free At Current Age
 Females, 2003-2005 By Race/Ethnicity

Race/ Ethnicity	Current Age	Risk of Being Diagnosed with Cancer						Risk of Dying from Cancer	
		+10 yrs Percent (95% C.I.)	+20 yrs Percent (95% C.I.)	+30 yrs Percent (95% C.I.)	Eventually Percent (95% C.I.)	Eventually Percent (95% C.I.)			
All Races	0	0.00 (0.00, 0.00)	0.00 (0.00, 0.00)	0.00 (0.00, 0.00)	0.68 (0.67, 0.70)	0.37 (0.36, 0.37)			
	10	0.00 (0.00, 0.00)	0.00 (0.00, 0.00)	0.02 (0.02, 0.02)	0.69 (0.67, 0.71)	0.37 (0.37, 0.38)			
	20	0.00 (0.00, 0.00)	0.02 (0.02, 0.02)	0.05 (0.04, 0.05)	0.69 (0.68, 0.71)	0.37 (0.37, 0.38)			
	30	0.01 (0.01, 0.02)	0.04 (0.04, 0.05)	0.11 (0.10, 0.11)	0.69 (0.68, 0.71)	0.37 (0.37, 0.38)			
	40	0.03 (0.03, 0.03)	0.10 (0.09, 0.10)	0.22 (0.21, 0.23)	0.68 (0.67, 0.70)	0.37 (0.36, 0.38)			
	50	0.07 (0.06, 0.07)	0.19 (0.18, 0.20)	0.40 (0.39, 0.41)	0.67 (0.65, 0.68)	0.36 (0.36, 0.37)			
	60	0.13 (0.12, 0.14)	0.35 (0.34, 0.36)	0.56 (0.55, 0.58)	0.63 (0.61, 0.65)	0.35 (0.35, 0.36)			
	70	0.25 (0.24, 0.26)	0.48 (0.47, 0.50)	- (- , -)	0.56 (0.54, 0.58)	0.33 (0.32, 0.34)			
80	0.31 (0.30, 0.33)	- (- , -)	- (- , -)	0.42 (0.40, 0.44)	0.27 (0.27, 0.28)				
White	0	0.00 (0.00, 0.00)	0.00 (0.00, 0.00)	0.00 (0.00, 0.00)	0.59 (0.57, 0.60)	0.33 (0.32, 0.33)			
	10	0.00 (0.00, 0.00)	0.00 (0.00, 0.00)	0.02 (0.01, 0.02)	0.59 (0.57, 0.61)	0.33 (0.32, 0.34)			
	20	0.00 (0.00, 0.00)	0.01 (0.01, 0.02)	0.04 (0.04, 0.04)	0.59 (0.57, 0.61)	0.33 (0.32, 0.34)			
	30	0.01 (0.01, 0.01)	0.04 (0.04, 0.04)	0.09 (0.09, 0.10)	0.59 (0.57, 0.61)	0.33 (0.32, 0.34)			
	40	0.03 (0.02, 0.03)	0.08 (0.08, 0.09)	0.19 (0.18, 0.20)	0.58 (0.57, 0.60)	0.33 (0.32, 0.34)			
	50	0.06 (0.05, 0.06)	0.16 (0.16, 0.17)	0.34 (0.33, 0.35)	0.57 (0.55, 0.59)	0.32 (0.32, 0.33)			
	60	0.11 (0.11, 0.12)	0.30 (0.29, 0.31)	0.48 (0.46, 0.50)	0.54 (0.52, 0.55)	0.31 (0.31, 0.32)			
	70	0.21 (0.20, 0.22)	0.41 (0.40, 0.43)	- (- , -)	0.47 (0.46, 0.49)	0.29 (0.29, 0.30)			
80	0.27 (0.26, 0.29)	- (- , -)	- (- , -)	0.36 (0.34, 0.37)	0.24 (0.24, 0.25)				
Black	0	0.00 (0.00, 0.00)	0.00 (0.00, 0.00)	0.00 (0.00, 0.01)	0.90 (0.84, 0.97)	0.59 (0.56, 0.61)			
	10	0.00 (0.00, 0.00)	0.00 (0.00, 0.01)	0.02 (0.01, 0.02)	0.92 (0.86, 0.99)	0.60 (0.57, 0.62)			
	20	0.00 (0.00, 0.01)	0.02 (0.01, 0.02)	0.06 (0.05, 0.07)	0.92 (0.86, 0.99)	0.60 (0.58, 0.63)			
	30	0.01 (0.01, 0.02)	0.05 (0.04, 0.06)	0.13 (0.12, 0.15)	0.93 (0.86, 1.00)	0.60 (0.58, 0.63)			
	40	0.04 (0.03, 0.05)	0.12 (0.11, 0.14)	0.29 (0.26, 0.32)	0.93 (0.86, 1.00)	0.61 (0.58, 0.63)			
	50	0.08 (0.07, 0.10)	0.26 (0.23, 0.29)	0.55 (0.50, 0.60)	0.93 (0.86, 1.00)	0.61 (0.58, 0.63)			
	60	0.19 (0.16, 0.22)	0.51 (0.46, 0.56)	0.80 (0.74, 0.87)	0.92 (0.85, 1.00)	0.61 (0.58, 0.64)			
	70	0.38 (0.34, 0.43)	0.73 (0.67, 0.81)	- (- , -)	0.88 (0.80, 0.96)	0.60 (0.57, 0.63)			
80	0.53 (0.46, 0.60)	- (- , -)	- (- , -)	0.73 (0.65, 0.83)	0.54 (0.51, 0.58)				

Devcan Version 7.0.0, April 2008, National Cancer Institute (<http://srab.cancer.gov/devcan/>).

Source: Incidence data are from the SEER 17 areas (San Francisco, Connecticut, Detroit, Hawaii, Iowa, New Mexico, Seattle, Utah, Atlanta, San Jose-Monterey, Los Angeles, Alaska Native Registry, Rural Georgia, California excluding SF/SJM/LA, Kentucky, Louisiana and New Jersey). Mortality data are from the NCHS public use data file for the total US.

- Statistic could not be calculated.

A percent or confidence interval value of 0.00 represents a value that is below 0.005.

Table XXIV-9 - continued
 STOMACH CANCER (Invasive)

Risk of Being Diagnosed With Cancer in 10, 20 and 30 Years, Lifetime Risk of Being Diagnosed with Cancer, and
 Lifetime Risk of Dying from Cancer Given Cancer Free At Current Age
 Females, 2003-2005 By Race/Ethnicity

Race/ Ethnicity	Current Age	Risk of Being Diagnosed with Cancer				Risk of Dying from Cancer	
		+10 yrs Percent (95% C.I.)	+20 yrs Percent (95% C.I.)	+30 yrs Percent (95% C.I.)	Eventually Percent (95% C.I.)	Eventually Percent (95% C.I.)	
Asian/ Pacific Islander	0	0.00 (0.00, 0.00)	0.00 (0.00, 0.01)	0.01 (0.00, 0.01)	1.68 (1.55, 1.84)	1.05 (0.94, 1.17)	
	10	0.00 (0.00, 0.00)	0.01 (0.00, 0.01)	0.03 (0.02, 0.04)	1.70 (1.56, 1.86)	1.06 (0.95, 1.18)	
	20	0.01 (0.00, 0.01)	0.03 (0.02, 0.04)	0.09 (0.07, 0.10)	1.70 (1.56, 1.86)	1.06 (0.95, 1.18)	
	30	0.02 (0.02, 0.03)	0.08 (0.07, 0.09)	0.20 (0.18, 0.22)	1.70 (1.56, 1.86)	1.06 (0.95, 1.18)	
	40	0.06 (0.05, 0.07)	0.18 (0.16, 0.20)	0.40 (0.36, 0.44)	1.68 (1.54, 1.84)	1.05 (0.94, 1.18)	
	50	0.12 (0.10, 0.14)	0.34 (0.31, 0.38)	0.80 (0.74, 0.86)	1.64 (1.50, 1.80)	1.03 (0.92, 1.15)	
	60	0.23 (0.20, 0.26)	0.70 (0.64, 0.76)	1.23 (1.13, 1.32)	1.56 (1.42, 1.73)	1.00 (0.89, 1.13)	
	70	0.50 (0.45, 0.55)	1.06 (0.97, 1.16)	- (- , -)	1.42 (1.27, 1.59)	0.95 (0.83, 1.08)	
	80	0.67 (0.59, 0.76)	- (- , -)	- (- , -)	1.09 (0.94, 1.28)	0.82 (0.69, 0.97)	
American Indian/ Alaska Native ^a	0	0.00 (0.00, 0.05)	0.00 (0.00, 0.05)	0.01 (0.00, 0.05)	0.81 (0.54, 1.40)	0.54 (0.39, 0.78)	
	10	0.00 (0.00, 0.02)	0.01 (0.00, 0.03)	0.03 (0.01, 0.07)	0.82 (0.55, 1.42)	0.55 (0.40, 0.79)	
	20	0.01 (0.00, 0.03)	0.03 (0.01, 0.07)	0.06 (0.03, 0.12)	0.82 (0.55, 1.43)	0.56 (0.40, 0.80)	
	30	0.02 (0.00, 0.06)	0.06 (0.03, 0.11)	0.15 (0.09, 0.24)	0.83 (0.55, 1.44)	0.56 (0.40, 0.80)	
	40	0.04 (0.01, 0.08)	0.13 (0.08, 0.22)	0.27 (0.16, 0.42)	0.82 (0.54, 1.44)	0.55 (0.39, 0.80)	
	50	0.10 (0.05, 0.18)	0.24 (0.14, 0.39)	0.40 (0.25, 0.61)	0.81 (0.52, 1.45)	0.53 (0.36, 0.78)	
	60	0.15 (0.07, 0.28)	0.31 (0.18, 0.52)	0.63 (0.39, 0.99)	0.75 (0.46, 1.42)	0.52 (0.34, 0.79)	
	70	0.19 (0.08, 0.39)	0.56 (0.31, 0.94)	- (- , -)	0.69 (0.38, 1.46)	0.48 (0.28, 0.79)	
	80	0.49 (0.23, 0.93)	- (- , -)	- (- , -)	0.66 (0.32, 1.66)	0.39 (0.16, 0.82)	
Hispanic ^b	0	0.00 (0.00, 0.00)	0.00 (0.00, 0.00)	0.01 (0.00, 0.01)	1.36 (1.26, 1.47)	0.73 (0.68, 0.78)	
	10	0.00 (0.00, 0.00)	0.01 (0.00, 0.01)	0.03 (0.02, 0.03)	1.37 (1.27, 1.49)	0.74 (0.69, 0.79)	
	20	0.01 (0.00, 0.01)	0.03 (0.02, 0.03)	0.08 (0.07, 0.09)	1.37 (1.27, 1.49)	0.74 (0.69, 0.79)	
	30	0.02 (0.02, 0.03)	0.08 (0.07, 0.09)	0.20 (0.18, 0.21)	1.37 (1.27, 1.49)	0.74 (0.69, 0.79)	
	40	0.05 (0.05, 0.06)	0.17 (0.16, 0.19)	0.39 (0.36, 0.43)	1.36 (1.26, 1.48)	0.74 (0.69, 0.79)	
	50	0.12 (0.11, 0.13)	0.34 (0.31, 0.37)	0.74 (0.69, 0.80)	1.32 (1.22, 1.44)	0.72 (0.67, 0.77)	
	60	0.23 (0.21, 0.26)	0.64 (0.59, 0.70)	1.04 (0.96, 1.12)	1.25 (1.14, 1.37)	0.68 (0.63, 0.73)	
	70	0.45 (0.41, 0.50)	0.88 (0.81, 0.96)	- (- , -)	1.11 (1.00, 1.24)	0.62 (0.56, 0.67)	
	80	0.54 (0.47, 0.62)	- (- , -)	- (- , -)	0.83 (0.71, 0.97)	0.51 (0.45, 0.57)	

Devcan Version 7.0.0, April 2008, National Cancer Institute (<http://srab.cancer.gov/devcan/>).

Source: Incidence data are from the SEER 17 areas (San Francisco, Connecticut, Detroit, Hawaii, Iowa, New Mexico, Seattle, Utah, Atlanta, San Jose-Monterey, Los Angeles, Alaska Native Registry, Rural Georgia, California excluding SF/SJM/LA, Kentucky, Louisiana and New Jersey). Mortality data are from the NCHS public use data file for the total US.

^a Underlying incidence and mortality data for American Indian/Alaska Native are based on the CHSDA (Contract Health Service Delivery Area) counties.

^b Hispanic is not mutually exclusive from whites, blacks, Asian/Pacific Islanders, and American Indians/Alaska Natives. Underlying incidence data for Hispanics are based on NHIA and exclude cases from the Alaska Native Registry and Kentucky. Underlying mortality data for Hispanics exclude deaths from Minnesota, New Hampshire and North Dakota.

- Statistic could not be calculated.

A percent or confidence interval value of 0.00 represents a value that is below 0.005.

Table XXIV-10
STOMACH CANCER (Invasive)

SEER INCIDENCE AND U.S. MORTALITY
AGE-ADJUSTED RATES AND TRENDS^a
By Race/Ethnicity and Sex

SEER Incidence	Rate 2001-2005 ^b			Seer 13 Areas ^c Trend 1996-2005 AAPC (%)			SEER 9 Areas ^d Trend 1996-2005 AAPC (%)		
	Rate per 100,000 persons			Total	Males	Females	Total	Males	Females
	Total	Males	Females	Total	Males	Females	Total	Males	Females
RACE/ETHNICITY									
All Races	8.0	11.3	5.5	-1.5*	-2.0*	-0.9*	-1.6*	-2.1*	-1.6*
White	7.0	10.0	4.7	-1.5*	-2.1*	-0.9*	-1.9*	-1.9*	-2.0*
White Hispanic ^e	12.4	15.9	9.7	-1.9*	-2.8*	-0.9*	-	-	-
White Non-Hispanic ^e	6.3	9.3	4.0	-1.9*	-2.3*	-1.7*	-	-	-
Black	12.4	17.4	8.9	-2.0*	-2.5*	-2.8*	-1.8*	-2.2*	-1.0*
Asian/Pacific Islander	13.9	18.6	10.5	-3.1*	-3.0*	-2.9*	-	-	-
Amer Ind/Alaska Nat ^f	11.6	16.8	7.7	1.1	-	-	-	-	-
Hispanic ^e	12.1	15.5	9.5	-1.7*	-2.6*	-0.7	-	-	-
U.S. Mortality ^g									
	Rate 2001-2005			Trend 1996-2005 ^h					
	Rate per 100,000 persons			AAPC (%)					
	Total	Males	Females	Total	Males	Females			
RACE/ETHNICITY									
All Races	4.1	5.7	2.9	-3.1*	-3.7*	-2.7*			
White	3.6	5.0	2.5	-3.2*	-3.7*	-2.8*			
White Hispanic ^e	6.8	9.0	5.2	-2.1*	-2.4*	-1.8*			
White Non-Hispanic ^e	3.3	4.7	2.3	-3.5*	-4.2*	-3.2*			
Black	7.8	11.5	5.5	-3.4*	-3.2*	-2.8*			
Asian/Pacific Islander	7.6	10.1	5.9	-4.0*	-3.7*	-4.1*			
Amer Ind/Alaska Nat									
Total U.S.	4.8	6.7	3.5	-2.3*	-2.1*	-2.6			
CHSDA Counties	7.1	9.9	5.2	-0.9	-1.2	-0.2			
Non-CHSDA Counties	1.9	2.6	1.4	-	-	-			
Hispanic ^e	6.5	8.7	4.9	-2.1*	-2.3*	-1.7*			

The AAPC is the Average Annual Percent Change over the time interval. The AAPCs are calculated by the Joinpoint Regression Program Version 3.3, April 2008, National Cancer Institute.

Statistic not shown. Rate based on less than 16 cases for the time interval. Trend based on less than 10 cases for at least one year within the time interval.

Rates are age-adjusted to the 2000 US Std Population (19 age groups - Census P25-1130). Trends are based on rates age-adjusted to the 2000 US Std Population (19 age groups - Census P25-1130).

Incidence data used in calculating the 2001-2005 rates are from the SEER 17 areas (San Francisco, Connecticut, Detroit, Hawaii, Iowa, New Mexico, Seattle, Utah, Atlanta, San Jose-Monterey, Los Angeles, Alaska Native Registry, Rural Georgia, California excluding SF/SJM/LA, Kentucky, Louisiana and New Jersey).

The SEER 13 areas are San Francisco, Connecticut, Detroit, Hawaii, Iowa, New Mexico, Seattle, Utah, Atlanta, San Jose-Monterey, Los Angeles, Alaska Native Registry and Rural Georgia. The 1996-2005 AAPC trends are based on a Joinpoint analysis using diagnosis years 1992-2005.

The SEER 9 areas are San Francisco, Connecticut, Detroit, Hawaii, Iowa, New Mexico, Seattle, Utah, and Atlanta. The 1996-2005 AAPC trends are based on a Joinpoint analysis using diagnosis years 1975-2005.

Hispanic and Non-Hispanic are not mutually exclusive from whites, blacks, Asian/Pacific Islanders, and American Indians/Alaska Natives. Incidence data for Hispanics and Non-Hispanics are based on NHIA and exclude cases from the Alaska Native Registry and Kentucky. The 2001-2005 Hispanic and Non-Hispanic death rates exclude deaths from Minnesota, New Hampshire and North Dakota. The 1996-2005 Hispanic and Non-Hispanic mortality trends exclude deaths from Connecticut, Maine, Maryland, Minnesota, New Hampshire, New York, North Dakota, Oklahoma and Vermont.

Incidence data for American Indian/Alaska Native are based on the CHSDA(Contract Health Service Delivery Area) counties.

US Mortality Files, National Center for Health Statistics, CDC.

The 1996-2005 mortality AAPCs are based on a Joinpoint analysis using years of death 1992-2005.

The APC is significantly different from zero (p<.05).

Table XXIV-11
STOMACH CANCER (Invasive)

AGE-ADJUSTED SEER INCIDENCE RATES^a
 By Registry, Race and Sex

	<u>All Races</u>			<u>Whites</u>			<u>Blacks</u>		
	<u>Total</u>	<u>Males</u>	<u>Females</u>	<u>Total</u>	<u>Males</u>	<u>Females</u>	<u>Total</u>	<u>Males</u>	<u>Females</u>
<u>SEER INCIDENCE RATES^a, 2001-2005</u>									
<u>REGISTRY</u>									
Atlanta & Rural Georgia	6.3	8.6	4.7	4.5	5.9	3.4	10.2	15.0	7.2
Atlanta	6.4	8.5	4.8	4.5	5.8	3.5	10.5	15.1	7.6
Rural Georgia	5.7	10.2	-	5.0	8.6	-	7.4	-	-
California	8.2	11.4	5.8	7.2	10.1	5.0	11.4	15.9	8.2
Greater Bay Area	8.4	11.8	5.9	7.0	9.9	4.7	11.9	17.1	8.0
San Francisco-Oakland	8.5	12.0	5.8	6.9	9.8	4.5	12.0	17.0	8.3
San Jose-Monterey	8.4	11.4	6.2	7.2	10.0	5.1	10.3	19.9	-
Los Angeles	10.3	13.7	7.8	8.8	11.8	6.6	11.7	15.9	8.8
Greater California	7.2	10.1	4.9	6.7	9.5	4.4	10.7	15.2	7.3
Connecticut	8.7	12.8	5.6	8.2	12.2	5.3	14.7	21.7	9.9
Detroit	8.8	12.6	6.0	7.8	11.3	5.0	12.8	17.4	9.8
Hawaii	12.8	17.1	9.4	7.5	11.4	4.3	-	-	-
Iowa	5.5	8.3	3.4	5.4	8.0	3.4	10.6	19.4	-
Kentucky	5.9	8.5	3.8	5.6	8.2	3.5	10.6	13.4	8.4
Louisiana	8.4	11.7	5.9	6.2	9.0	4.1	14.7	20.7	10.8
New Jersey	9.1	13.2	6.1	8.4	12.3	5.5	12.9	18.6	9.2
New Mexico	7.3	10.0	5.1	6.9	9.5	4.7	-	-	-
Seattle-Puget Sound	6.6	9.3	4.5	6.0	8.6	3.8	10.1	15.1	6.5
Utah	5.1	7.2	3.2	4.8	7.0	3.0	-	-	-
9 SEER Areas ^b	7.7	10.9	5.2	6.5	9.5	4.3	12.1	17.0	8.7
11 SEER Areas ^b	8.3	11.6	5.8	7.1	10.0	4.8	11.9	16.7	8.7
13 SEER Areas ^b	8.3	11.6	5.8	7.0	10.0	4.8	11.9	16.7	8.6
17 SEER Areas ^b	8.0	11.3	5.5	7.0	10.0	4.7	12.4	17.4	8.9

^a Rates are per 100,000 and are age-adjusted to the 2000 US Std Population (19 age groups - Census P25-1130)

^b The SEER 9 areas are San Francisco, Connecticut, Detroit, Hawaii, Iowa, New Mexico, Seattle, Utah and Atlanta.

The SEER 11 areas comprise the SEER 9 areas plus San Jose-Monterey and Los Angeles.

The SEER 13 areas comprise the SEER 11 areas plus the Alaska Native Registry and Rural Georgia.

The SEER 17 areas comprise the SEER 13 areas plus California excluding SF/SJM/LA, Kentucky, Louisiana and New Jersey.

- Statistic not shown. Rate based on less than 16 cases for the time interval.

Table XXIV-12
STOMACH CANCER (Invasive)

AGE-ADJUSTED SEER DEATH RATES^a
By Registry, Race and Sex

	All Races			Whites			Blacks		
	Total	Males	Females	Total	Males	Females	Total	Males	Females
<u>SEER DEATH RATES^a, 2001-2005</u>									
REGISTRY									
Atlanta & Rural Georgia	3.8	5.3	2.8	2.4	3.0	1.9	7.0	10.8	4.8
Atlanta	3.8	5.2	2.8	2.4	3.0	1.9	7.2	10.9	5.0
Rural Georgia	3.7	5.9	-	-	-	-	-	-	-
California	4.9	6.7	3.6	4.4	5.9	3.2	7.7	11.1	5.3
Greater Bay Area	4.9	6.6	3.7	4.0	5.5	2.9	8.2	11.9	5.5
San Francisco-Oakland	5.0	6.7	3.8	3.9	5.3	2.8	8.7	12.4	6.0
San Jose-Monterey	4.7	6.5	3.5	4.2	5.9	3.0	-	-	-
Los Angeles	6.3	8.5	4.7	5.5	7.4	4.3	7.8	10.7	5.7
Greater California	4.3	5.9	3.1	4.0	5.5	2.9	7.2	11.3	4.3
Connecticut	4.7	6.6	3.3	4.5	6.4	3.0	8.3	11.5	6.3
Detroit	4.6	6.2	3.4	3.8	5.2	2.8	7.5	10.2	5.7
Hawaii	7.3	10.0	5.1	4.1	6.4	2.2	-	-	-
Iowa	2.9	4.2	1.9	2.8	4.1	1.9	-	-	-
Kentucky	3.5	5.0	2.4	3.3	4.8	2.2	6.1	8.0	4.6
Louisiana	5.0	7.4	3.4	3.4	4.9	2.2	10.2	15.5	6.9
New Jersey	4.9	7.1	3.5	4.5	6.5	3.1	8.1	11.7	5.9
New Mexico	4.7	6.7	3.2	4.5	6.3	3.1	-	-	-
Seattle-Puget Sound	3.6	4.8	2.6	3.1	4.2	2.2	6.9	11.4	-
Utah	2.8	3.5	2.2	2.7	3.4	2.2	-	-	-
9 SEER Areas ^b	4.3	5.9	3.1	3.5	4.9	2.5	7.7	11.0	5.4
11 SEER Areas ^b	4.8	6.5	3.5	4.0	5.4	2.9	7.7	10.9	5.5
13 SEER Areas ^b	4.8	6.5	3.5	4.0	5.4	2.9	7.6	10.9	5.4
17 SEER Areas ^b	4.6	6.4	3.3	4.0	5.5	2.8	8.1	11.8	5.6
Total U.S.	4.1	5.7	2.9	3.6	5.0	2.5	7.8	11.5	5.5

^a US Mortality Files, National Center for Health Statistics, Centers for Disease Control and Prevention. Rates are per 100,000 and are age-adjusted to the 2000 US Std Population (19 age groups - Census P25-1130).

^b The SEER 9 areas are San Francisco, Connecticut, Detroit, Hawaii, Iowa, New Mexico, Seattle, Utah and Atlanta.

The SEER 11 areas comprise the SEER 9 areas plus San Jose-Monterey and Los Angeles.

The SEER 13 areas comprise the SEER 11 areas plus the Alaska Native Registry and Rural Georgia.

The SEER 17 areas comprise the SEER 13 areas plus California excluding SF/SJM/LA, Kentucky, Louisiana and New Jersey.

- Statistic not shown. Rate based on less than 16 cases for the time interval.

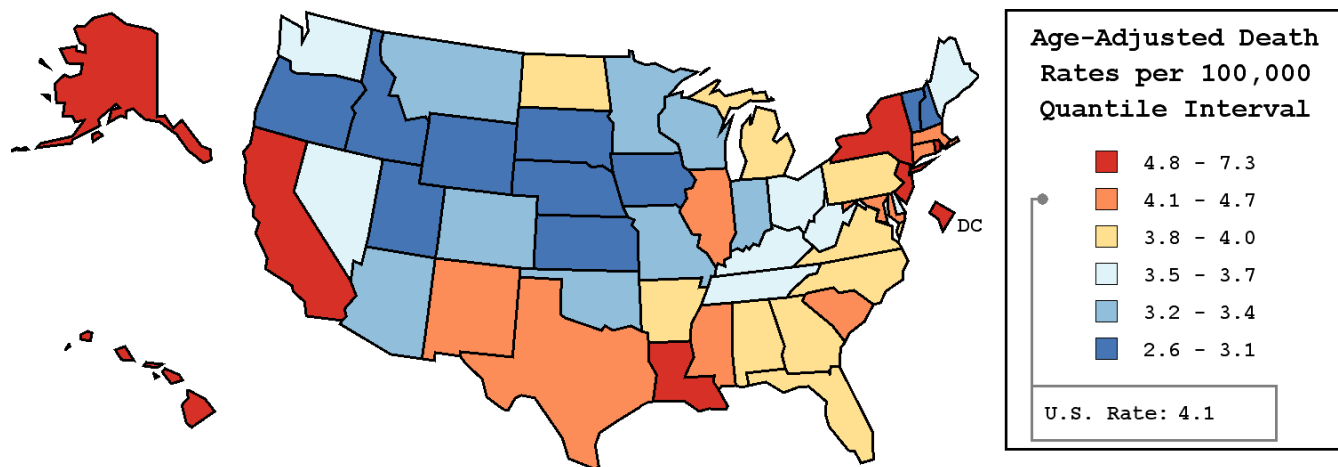
Table XXIV-13
STOMACH CANCER (Invasive)

AVERAGE ANNUAL AGE-ADJUSTED CANCER DEATH^a RATES BY STATE, ALL RACES, 2001-2005

Males and Females

State	Rate	SE	Rank	PD
TOTAL U.S.	4.1	0.02		
High Five States				
Hawaii	7.3 ^b	0.33	(01)	78.0 ^c
D.C.	6.2 ^b	0.46	(02)	51.2 ^c
Rhode Island	5.6 ^b	0.30	(03)	36.6 ^c
Alaska	5.3	0.57	(04)	29.3 ^c
Louisiana	5.0 ^b	0.15	(05)	22.0 ^c
Low Five States				
Wyoming	3.0	0.35	(47)	-26.8 ^c
Iowa	2.9 ^b	0.13	(48)	-29.3 ^c
Utah	2.8 ^b	0.18	(49)	-31.7 ^c
Idaho	2.7 ^b	0.20	(50)	-34.1 ^c
Nebraska	2.6 ^b	0.17	(51)	-36.6 ^c

State	Rate	SE	Rank	PD	State	Rate	SE	Rank	PD
Alabama	4.0	0.13	(18)	-2.4	Montana	3.3	0.26	(37)	-19.5 ^c
Alaska	5.3	0.57	(04)	29.3 ^c	Nebraska	2.6 ^b	0.17	(51)	-36.6 ^c
Arizona	3.4 ^b	0.11	(34)	-17.1 ^c	Nevada	3.7	0.19	(27)	-9.8
Arkansas	3.8	0.16	(25)	-7.3	New Hampshire	3.1 ^b	0.22	(45)	-24.4 ^c
California	4.9 ^b	0.06	(08)	19.5 ^c	New Jersey	4.9 ^b	0.10	(07)	19.5 ^c
Colorado	3.3 ^b	0.13	(39)	-19.5 ^c	New Mexico	4.7	0.23	(09)	14.6
Connecticut	4.7 ^b	0.16	(10)	14.6	New York	5.0 ^b	0.07	(06)	22.0 ^c
Delaware	3.7	0.29	(26)	-9.8	North Carolina	3.8	0.10	(22)	-7.3
D.C.	6.2 ^b	0.46	(02)	51.2 ^c	North Dakota	3.8	0.33	(23)	-7.3
Florida	3.8 ^b	0.06	(24)	-7.3	Ohio	3.5 ^b	0.08	(31)	-14.6
Georgia	3.9	0.10	(20)	-4.9	Oklahoma	3.2 ^b	0.13	(40)	-22.0 ^c
Hawaii	7.3 ^b	0.33	(01)	78.0 ^c	Oregon	3.1 ^b	0.13	(43)	-24.4 ^c
Idaho	2.7 ^b	0.20	(50)	-34.1 ^c	Pennsylvania	3.9	0.07	(19)	-4.9
Illinois	4.5 ^b	0.09	(11)	9.8	Rhode Island	5.6 ^b	0.30	(03)	36.6 ^c
Indiana	3.2 ^b	0.10	(41)	-22.0 ^c	South Carolina	4.5	0.15	(12)	9.8
Iowa	2.9 ^b	0.13	(48)	-29.3 ^c	South Dakota	3.1	0.27	(42)	-24.4 ^c
Kansas	3.1 ^b	0.15	(44)	-24.4 ^c	Tennessee	3.5 ^b	0.11	(32)	-14.6
Kentucky	3.5 ^b	0.13	(33)	-14.6	Texas	4.5 ^b	0.07	(14)	9.8
Louisiana	5.0 ^b	0.15	(05)	22.0 ^c	Utah	2.8 ^b	0.18	(49)	-31.7 ^c
Maine	3.6	0.22	(28)	-12.2	Vermont	3.0 ^b	0.30	(46)	-26.8 ^c
Maryland	4.1	0.13	(16)	0.0	Virginia	4.0	0.11	(17)	-2.4
Massachusetts	4.4	0.11	(15)	7.3	Washington	3.6 ^b	0.11	(30)	-12.2
Michigan	3.8	0.09	(21)	-7.3	West Virginia	3.6	0.18	(29)	-12.2
Minnesota	3.4 ^b	0.12	(35)	-17.1 ^c	Wisconsin	3.3 ^b	0.11	(36)	-19.5 ^c
Mississippi	4.5	0.18	(13)	9.8	Wyoming	3.0	0.35	(47)	-26.8 ^c
Missouri	3.3 ^b	0.10	(38)	-19.5 ^c					



^a US Mortality Files, National Center for Health Statistics, Centers for Disease Control and Prevention. Rates are per 100,000 and are age-adjusted to the 2000 US Std Population (19 age groups - Census P25-1130).
^b Difference between state rate and total U.S. rate is statistically significant ($p \leq .0002$).
^c Absolute percent difference between state rate and total U.S. rate is 15% or more.
SE Standard error of the rate.
PD Percent difference between state rate and total U.S. rate.

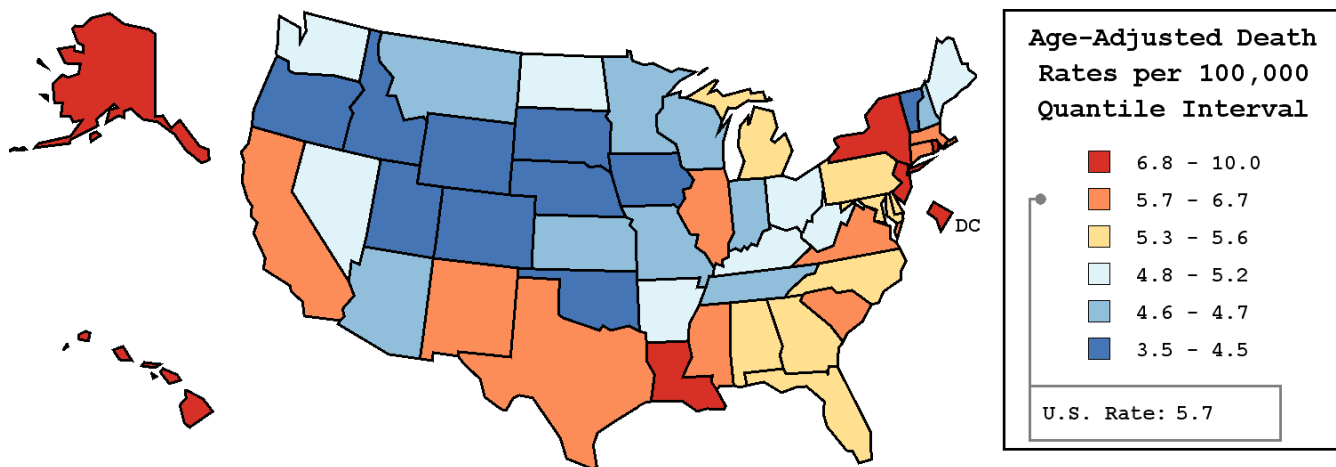
Table XXIV-14
STOMACH CANCER (Invasive)

AVERAGE ANNUAL AGE-ADJUSTED CANCER DEATH^a RATES BY STATE, ALL RACES, 2001-2005

Males

State	Rate	SE	Rank	PD
TOTAL U.S.	5.7	0.03		
High Five States				
Hawaii	10.0 ^b	0.58	(01)	75.4 ^c
D.C.	8.9 ^b	0.89	(02)	56.1 ^c
Rhode Island	8.2 ^b	0.58	(03)	43.9 ^c
Alaska	7.6	1.07	(04)	33.3 ^c
Louisiana	7.4 ^b	0.30	(05)	29.8 ^c
Low Five States				
Wyoming	4.2	0.63	(47)	-26.3 ^c
Oregon	4.1 ^b	0.23	(48)	-28.1 ^c
Nebraska	3.7 ^b	0.31	(49)	-35.1 ^c
Utah	3.5 ^b	0.31	(50)	-38.6 ^c
Idaho	3.5 ^b	0.35	(51)	-38.6 ^c

State	Rate	SE	Rank	PD	State	Rate	SE	Rank	PD
Alabama	5.6	0.24	(17)	-1.8	Montana	4.7	0.47	(34)	-17.5 ^c
Alaska	7.6	1.07	(04)	33.3 ^c	Nebraska	3.7 ^b	0.31	(49)	-35.1 ^c
Arizona	4.7 ^b	0.19	(38)	-17.5 ^c	Nevada	4.9	0.34	(31)	-14.0
Arkansas	5.1	0.29	(28)	-10.5	New Hampshire	4.7	0.42	(36)	-17.5 ^c
California	6.7 ^b	0.10	(09)	17.5 ^c	New Jersey	7.1 ^b	0.20	(06)	24.6 ^c
Colorado	4.5 ^b	0.24	(43)	-21.1 ^c	New Mexico	6.7	0.42	(08)	17.5 ^c
Connecticut	6.6	0.29	(10)	15.8 ^c	New York	7.0 ^b	0.13	(07)	22.8 ^c
Delaware	5.4	0.55	(19)	-5.3	North Carolina	5.3	0.18	(23)	-7.0
D.C.	8.9 ^b	0.89	(02)	56.1 ^c	North Dakota	5.2	0.58	(25)	-8.8
Florida	5.3 ^b	0.11	(22)	-7.0	Ohio	5.0 ^b	0.14	(29)	-12.3
Georgia	5.4	0.20	(20)	-5.3	Oklahoma	4.5 ^b	0.24	(42)	-21.1 ^c
Hawaii	10.0 ^b	0.58	(01)	75.4 ^c	Oregon	4.1 ^b	0.23	(48)	-28.1 ^c
Idaho	3.5 ^b	0.35	(51)	-38.6 ^c	Pennsylvania	5.6	0.14	(18)	-1.8
Illinois	6.4 ^b	0.16	(12)	12.3	Rhode Island	8.2 ^b	0.58	(03)	43.9 ^c
Indiana	4.6 ^b	0.19	(41)	-19.3 ^c	South Carolina	6.3	0.27	(13)	10.5
Iowa	4.2 ^b	0.24	(46)	-26.3 ^c	South Dakota	4.5	0.49	(44)	-21.1 ^c
Kansas	4.6 ^b	0.27	(40)	-19.3 ^c	Tennessee	4.7 ^b	0.20	(33)	-17.5 ^c
Kentucky	5.0	0.24	(30)	-12.3	Texas	6.2 ^b	0.13	(14)	8.8
Louisiana	7.4 ^b	0.30	(05)	29.8 ^c	Utah	3.5 ^b	0.31	(50)	-38.6 ^c
Maine	5.1	0.41	(27)	-10.5	Vermont	4.2	0.56	(45)	-26.3 ^c
Maryland	5.3	0.22	(24)	-7.0	Virginia	5.9	0.21	(16)	3.5
Massachusetts	6.2	0.21	(15)	8.8	Washington	4.8 ^b	0.20	(32)	-15.8 ^c
Michigan	5.3	0.16	(21)	-7.0	West Virginia	5.2	0.35	(26)	-8.8
Minnesota	4.7 ^b	0.21	(37)	-17.5 ^c	Wisconsin	4.7 ^b	0.20	(35)	-17.5 ^c
Mississippi	6.5	0.34	(11)	14.0	Wyoming	4.2	0.63	(47)	-26.3 ^c
Missouri	4.6 ^b	0.19	(39)	-19.3 ^c					



^a US Mortality Files, National Center for Health Statistics, Centers for Disease Control and Prevention. Rates are per 100,000 and are age-adjusted to the 2000 US Std Population (19 age groups - Census P25-1130).
^b Difference between state rate and total U.S. rate is statistically significant ($p \leq .0002$).
^c Absolute percent difference between state rate and total U.S. rate is 15% or more.
SE Standard error of the rate.
PD Percent difference between state rate and total U.S. rate.

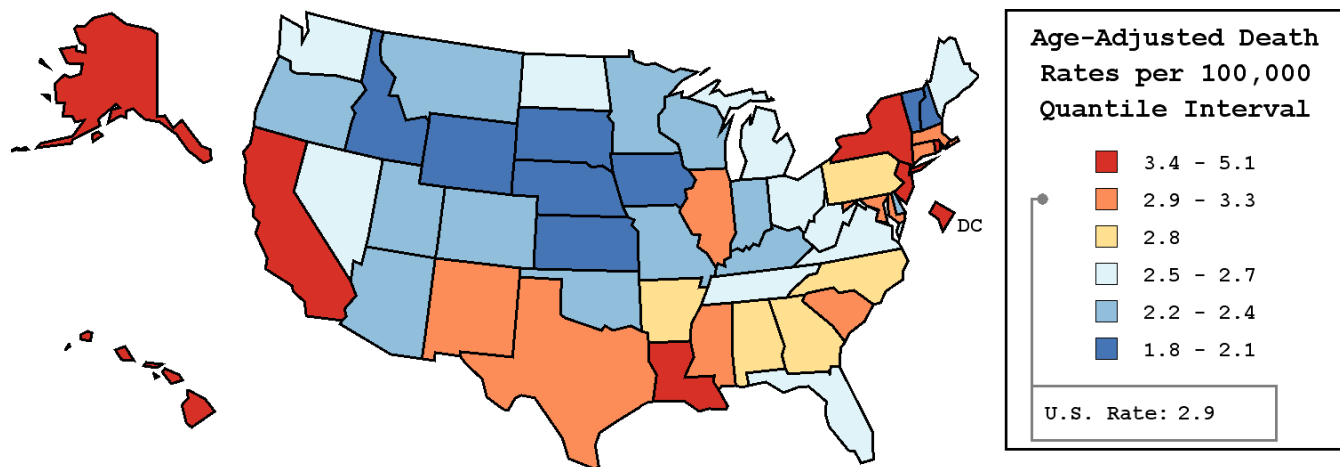
Table XXIV-15
STOMACH CANCER (Invasive)

AVERAGE ANNUAL AGE-ADJUSTED CANCER DEATH^a RATES BY STATE, ALL RACES, 2001-2005

Females

State	Rate	SE	Rank	PD
TOTAL U.S.	2.9	0.02		
High Five States				
Hawaii	5.1 ^b	0.37	(01)	75.9 ^c
D.C.	4.2	0.49	(02)	44.8 ^c
Rhode Island	3.8	0.32	(03)	31.0 ^c
New York	3.7 ^b	0.08	(04)	27.6 ^c
California	3.6 ^b	0.06	(05)	24.1 ^c
Low Five States				
Kansas	2.0 ^b	0.16	(47)	-31.0 ^c
Wyoming	1.9	0.37	(48)	-34.5 ^c
Iowa	1.9 ^b	0.14	(49)	-34.5 ^c
Nebraska	1.9 ^b	0.19	(50)	-34.5 ^c
New Hampshire	1.8 ^b	0.22	(51)	-37.9 ^c

State	Rate	SE	Rank	PD	State	Rate	SE	Rank	PD
Alabama	2.8	0.14	(20)	-3.4	Montana	2.3	0.28	(40)	-20.7 ^c
Alaska	3.4	0.61	(07)	17.2 ^c	Nebraska	1.9 ^b	0.19	(50)	-34.5 ^c
Arizona	2.4 ^b	0.13	(32)	-17.2 ^c	Nevada	2.7	0.22	(26)	-6.9
Arkansas	2.8	0.18	(19)	-3.4	New Hampshire	1.8 ^b	0.22	(51)	-37.9 ^c
California	3.6 ^b	0.06	(05)	24.1 ^c	New Jersey	3.5 ^b	0.11	(06)	20.7 ^c
Colorado	2.4 ^b	0.15	(35)	-17.2 ^c	New Mexico	3.2	0.25	(10)	10.3
Connecticut	3.3	0.17	(09)	13.8	New York	3.7 ^b	0.08	(04)	27.6 ^c
Delaware	2.4	0.31	(36)	-17.2 ^c	North Carolina	2.8	0.11	(18)	-3.4
D.C.	4.2	0.49	(02)	44.8 ^c	North Dakota	2.7	0.36	(27)	-6.9
Florida	2.6 ^b	0.07	(28)	-10.3	Ohio	2.5 ^b	0.08	(31)	-13.8
Georgia	2.8	0.12	(17)	-3.4	Oklahoma	2.2 ^b	0.15	(41)	-24.1 ^c
Hawaii	5.1 ^b	0.37	(01)	75.9 ^c	Oregon	2.3 ^b	0.15	(37)	-20.7 ^c
Idaho	2.0 ^b	0.24	(46)	-31.0 ^c	Pennsylvania	2.8	0.08	(21)	-3.4
Illinois	3.2	0.09	(11)	10.3	Rhode Island	3.8	0.32	(03)	31.0 ^c
Indiana	2.2 ^b	0.11	(43)	-24.1 ^c	South Carolina	3.1	0.16	(15)	6.9
Iowa	1.9 ^b	0.14	(49)	-34.5 ^c	South Dakota	2.1	0.31	(44)	-27.6 ^c
Kansas	2.0 ^b	0.16	(47)	-31.0 ^c	Tennessee	2.7	0.12	(25)	-6.9
Kentucky	2.4 ^b	0.14	(34)	-17.2 ^c	Texas	3.1	0.08	(13)	6.9
Louisiana	3.4	0.16	(08)	17.2 ^c	Utah	2.2	0.22	(42)	-24.1 ^c
Maine	2.6	0.25	(29)	-10.3	Vermont	2.1	0.33	(45)	-27.6 ^c
Maryland	3.2	0.14	(12)	10.3	Virginia	2.7	0.12	(24)	-6.9
Massachusetts	3.1	0.12	(14)	6.9	Washington	2.7	0.13	(23)	-6.9
Michigan	2.7	0.10	(22)	-6.9	West Virginia	2.6	0.20	(30)	-10.3
Minnesota	2.4 ^b	0.13	(33)	-17.2 ^c	Wisconsin	2.3 ^b	0.12	(38)	-20.7 ^c
Mississippi	3.0	0.19	(16)	3.4	Wyoming	1.9	0.37	(48)	-34.5 ^c
Missouri	2.3 ^b	0.12	(39)	-20.7 ^c					



^a US Mortality Files, National Center for Health Statistics, Centers for Disease Control and Prevention. Rates are per 100,000 and are age-adjusted to the 2000 US Std Population (19 age groups - Census P25-1130).
^b Difference between state rate and total U.S. rate is statistically significant ($p \leq .0002$).
^c Absolute percent difference between state rate and total U.S. rate is 15% or more.
SE Standard error of the rate.
PD Percent difference between state rate and total U.S. rate.

Table XXIV-16
STOMACH CANCER (Invasive)

Estimated United States Cancer Prevalence Counts^a on January 1, 2005
By Race/Ethnicity, Sex and Years Since Diagnosis

Years Since Diagnosis	0 to <5	5 to <10	10 to <15	15 to <20	20 to <25	25 to <30	0 to <15 ^e	0 to <30 ^e	>=30 ^g	Complete ^h
<u>Race/Sex</u>										
All Races ^b	31,518	12,494	7,436	5,263	2,692	1,482	51,447	60,885	2,326	63,211
Males	18,834	7,223	3,806	2,668	1,407	851	29,862	34,789	1,329	36,118
Females	12,684	5,271	3,630	2,595	1,285	631	21,585	26,096	997	27,093
White ^b	24,038	9,323	5,610	4,072	2,022	1,233	38,972	46,299	1,886	48,185
Males	14,804	5,403	2,840	2,069	1,098	697	23,047	26,911	1,027	27,938
Females	9,234	3,920	2,770	2,003	924	536	15,925	19,388	859	20,247
Black ^b	4,559	1,829	920	699	415	132	7,308	8,554	303	8,857
Males	2,357	959	512	358	215	93	3,828	4,494	176	4,670
Females	2,202	870	408	341	200	39	3,480	4,060	127	4,187
Asian/Pacific Islander ^c	2,669	1,215	803	+	+	+	4,687	+	+	+
Males	1,462	713	439	+	+	+	2,614	+	+	+
Females	1,207	502	364	+	+	+	2,073	+	+	+
Hispanic ^d	3,749	1,450	786	+	+	+	5,985	+	+	+
Males	2,038	687	400	+	+	+	3,126	+	+	+
Females	1,711	763	386	+	+	+	2,859	+	+	+

Estimated prevalence percent^a on January 1, 2005, of the SEER 11 population diagnosed in the previous 15 years
By Age at Prevalence, Race/Ethnicity and Sex

Age at Prevalence	Age Specific (Crude)										Age-Adjusted ^f
	All Ages	0-9	10-19	20-29	30-39	40-49	50-59	60-69	70-79	80+	All Ages
<u>Race/Sex</u>											
All Races ^c	0.0196%	-	0.0001%	0.0005%	0.0028%	0.0100%	0.0258%	0.0575%	0.1123%	0.1488%	0.0207%
Males	0.0224%	-	-	0.0003%	0.0029%	0.0108%	0.0313%	0.0787%	0.1511%	0.2001%	0.0270%
Females	0.0168%	-	-	0.0006%	0.0027%	0.0092%	0.0205%	0.0383%	0.0827%	0.1205%	0.0159%
White ^c	0.0163%	-	0.0001%	0.0004%	0.0026%	0.0081%	0.0208%	0.0476%	0.0860%	0.1138%	0.0164%
Males	0.0189%	-	-	0.0003%	0.0026%	0.0090%	0.0257%	0.0654%	0.1178%	0.1534%	0.0216%
Females	0.0138%	-	-	0.0005%	0.0026%	0.0072%	0.0160%	0.0311%	0.0611%	0.0922%	0.0123%
Black ^c	0.0183%	-	-	-	0.0026%	0.0147%	0.0367%	0.0672%	0.1353%	0.1838%	0.0259%
Males	0.0202%	-	-	-	0.0042%	0.0166%	0.0430%	0.0940%	0.1802%	0.2185%	0.0329%
Females	0.0166%	-	-	-	-	0.0131%	0.0315%	0.0462%	0.1055%	0.1671%	0.0209%
Asian/Pacific Islander ^c	0.0415%	-	-	-	0.0042%	0.0178%	0.0475%	0.1148%	0.2701%	0.4139%	0.0469%
Males	0.0476%	-	-	-	0.0037%	0.0178%	0.0573%	0.1586%	0.3629%	0.5289%	0.0605%
Females	0.0358%	-	-	-	0.0046%	0.0177%	0.0389%	0.0779%	0.2027%	0.3375%	0.0368%
Hispanic ^d	0.0141%	-	-	0.0006%	0.0043%	0.0133%	0.0353%	0.0787%	0.1457%	0.2066%	0.0282%
Males	0.0141%	-	-	-	0.0041%	0.0116%	0.0371%	0.1062%	0.1846%	0.2439%	0.0338%
Females	0.0140%	-	-	-	0.0047%	0.0151%	0.0336%	0.0556%	0.1176%	0.1852%	0.0242%

^a US 2005 cancer prevalence counts are based on 2005 cancer prevalence proportions from the SEER registries and 1/1/2005 US population estimates based on the average of 2004 and 2005 population estimates from the US Bureau of the Census. Prevalence was calculated using the First Malignant Primary Only for a person.

^{b c d} Statistics based on (b) SEER 9 Areas (c) SEER 11 Areas and Rural Georgia (d) NHIA for Hispanic for SEER 11 Areas and Rural Georgia.

^e Maximum limited-duration prevalence: 30 years for 1975-2005 SEER 9 data; 15 years for 1990-2005 SEER 11 data (used to calculate prevalence for Hispanics and Asian Pacific Islanders).

^f Percentages are age-adjusted to the 2000 US Standard Population (19 age groups - Census P25-1130) by 5-year age groups.

^{g h} (g) Cases diagnosed more than 30 years ago were estimated using the completeness index method (Capocaccia et. al. 1997, Merrill et. al. 2000). (h) Complete prevalence is obtained by summing 0 to <30 and >=30.

- Statistic not shown. Statistic based on fewer than 5 cases estimated alive in SEER for the time interval.

+ Not available.

Table XXIV-17

STOMACH CANCER(Invasive)

Percent Distribution and Counts by Histology among Histologically Confirmed Cases, 2001-2005
Both Sexes by Race

Histology ^a	All Races		White		Black		API		AI/AN		Hispanic ^b	
	Count	Percent	Count	Percent	Count	Percent	Count	Percent	Count	Percent	Count	Percent
Carcinoma	26,270	95.1%	19,098	95.3%	3,134	92.0%	3,705	96.0%	192	99.5%	4,231	97.1%
Epidermoid carcinoma ^c	217	0.8%	160	0.8%	40	1.2%	-	-	-	-	-	-
(8051-8131)												
Squamous cell carcinoma	213	0.8%	158	0.8%	39	1.1%	-	-	-	-	-	-
(8070-8078,8083-8084)												
Adenocarcinoma	24,091	87.2%	17,407	86.9%	2,855	83.8%	3,541	91.7%	172	89.1%	3,893	89.3%
(8050,8140-8147, 8160-8162,8180-8221, 8250-8507,8514,8520-8551, 8560,8570-8574, 8576,8940-8941)												
Adenocarcinoma, NOS	13,939	50.4%	10,419	52.0%	1,724	50.6%	1,635	42.4%	106	54.9%	1,975	45.3%
(8140)												
Adenocarcinoma, intestinal type (8144)	2,109	7.6%	1,218	6.1%	266	7.8%	603	15.6%	-	-	321	7.4%
Carcinoma, diffuse type (8145)	733	2.7%	435	2.2%	75	2.2%	214	5.5%	-	-	156	3.6%
Linitus plastica (8142)	401	1.5%	309	1.5%	35	1.0%	50	1.3%	-	-	100	2.3%
Mucinous adenocarcinoma	486	1.8%	360	1.8%	57	1.7%	59	1.5%	-	-	62	1.4%
(8470-8473,8480,8482)												
Mucin-producing adenocarcinoma (8481)	337	1.2%	258	1.3%	49	1.4%	23	0.6%	-	-	44	1.0%
Signet ring adenocarcinoma (8490)	4,962	18.0%	3,619	18.1%	509	14.9%	773	20.0%	30	15.5%	1,039	23.8%
Other adenocarcinomas ^d	1,124	4.1%	789	3.9%	140	4.1%	184	4.8%	-	-	196	4.5%
Other specific carcinomas	1,258	4.6%	1,010	5.0%	148	4.3%	71	1.8%	-	-	208	4.8%
(8012-8015,8030-8046, 8150-8155,8170-8175, 8230-8249,8508,8510-8513, 8561-8562,8575,8580-8671)												
Unspecified, Carcinoma, NOS	704	2.5%	521	2.6%	91	2.7%	78	2.0%	-	-	116	2.7%
(8010-8011,8020-8022)												

Source: SEER 17 areas (San Francisco, Connecticut, Detroit, Hawaii, Iowa, New Mexico, Seattle, Utah, Atlanta, San Jose-Monterey, Los Angeles, Alaska Native Registry, Rural Georgia, California excluding SF/SJM/LA, Kentucky, Louisiana and New Jersey). Percents may not sum to 100 due to rounding.

- Statistic not shown due to fewer than 16 cases during the time period.

^a Excludes Kaposi Sarcoma, mesothelioma, lymphomas, leukemias, myelomas, lymphoreticular, and immunoproliferative diseases.

^b Hispanic is not mutually exclusive from whites, blacks, Asian/Pacific Islanders, and American Indians/Alaska Natives.

^c Underlying incidence data for Hispanics are based on NHIA and exclude cases from the Alaska Native Registry and Kentucky.

^d Epidermoid carcinoma includes squamous, basal, and transitional cell carcinomas.

^d Other adenocarcinomas includes histologies 8050, 8141, 8143, 8146-8147, 8160-8162, 8180-8221, 8250-8469, 8474-8479, 8483-8489, 8491-8507, 8514, 8520-8551, 8560, 8570-8574, 8576, 8940-8941.

Table XXIV-17 - continued

STOMACH CANCER(Invasive)

Percent Distribution and Counts by Histology among Histologically Confirmed Cases, 2001-2005
Both Sexes by Race

Histology ^a	All Races		White		Black		API		AI/AN		Hispanic ^b	
	Count	Percent	Count	Percent	Count	Percent	Count	Percent	Count	Percent	Count	Percent
Sarcoma and other soft tissue tumors (8680-8713,8800-8921, 8990-8991,9040-9044, 9120-9136,9150-9252, 9370-9373,9540-9582)	100	0.4%	80	0.4%	-	-	-	-	-	-	-	-
Other specific types (8720-8790,8930-8936, 8950-8983,9000-9030, 9060-9110,9260-9365, 9380-9539)	1,134	4.1%	753	3.8%	239	7.0%	135	3.5%	-	-	96	2.2%
Unspecified (8000-8005)	134	0.5%	99	0.5%	21	0.6%	-	-	-	-	19	0.4%
Total ^c	27,638	100.0%	20,030	100.0%	3,407	100.0%	3,860	100.0%	193	100.0%	4,359	100.0%

Source: SEER 17 areas (San Francisco, Connecticut, Detroit, Hawaii, Iowa, New Mexico, Seattle, Utah, Atlanta, San Jose-Monterey, Los Angeles, Alaska Native Registry, Rural Georgia, California excluding SF/SJM/LA, Kentucky, Louisiana and New Jersey). Percents may not sum to 100 due to rounding.

- Statistic not shown due to fewer than 16 cases during the time period.

^a Excludes Kaposi Sarcoma, mesothelioma, lymphomas, leukemias, myelomas, lymphoreticular, and immunoproliferative diseases.

^b Hispanic is not mutually exclusive from whites, blacks, Asian/Pacific Islanders, and American Indians/Alaska Natives.

^c Underlying incidence data for Hispanics are based on NHIA and exclude cases from the Alaska Native Registry and Kentucky.

^c Total includes carcinoma cases from the previous page.

SEER Incidence, Delay Adjusted Incidence and US Death Rates^a Stomach Cancer, by Race and Sex

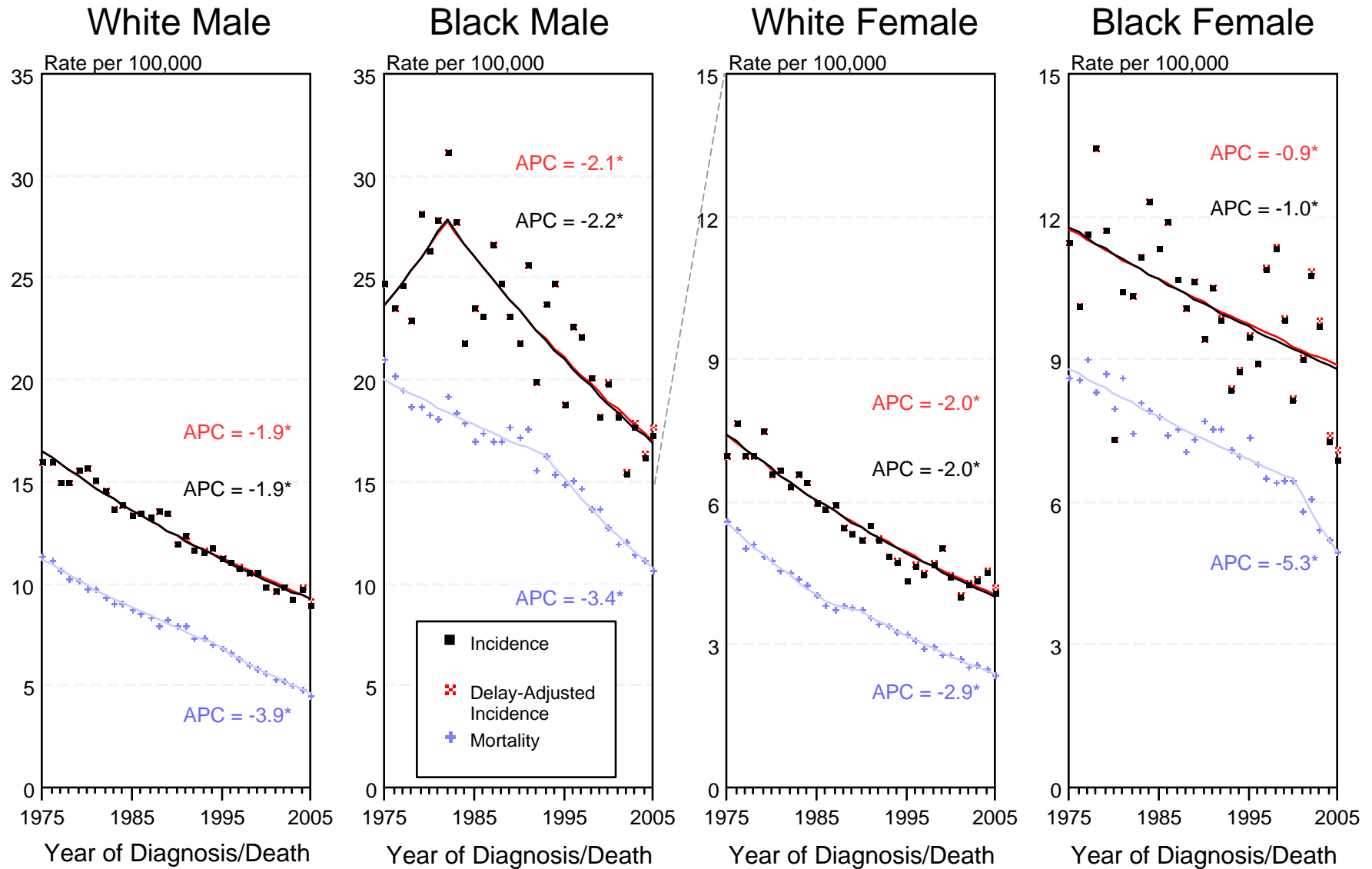


Figure XXIV-1

^a Source: SEER 9 areas and US Mortality Files (National Center for Health Statistics, CDC). Rates are age-adjusted to the 2000 US Std Population (19 age groups - Census P25-1103). Regression lines and APCs are calculated using the Joinpoint Regression Program Version 3.3.1, April 2008, National Cancer Institute. The APC is the Annual Percent Change for the regression line segments. The APC shown on the graph is for the most recent trend.

* The APC is significantly different from zero ($p < 0.05$).

SEER Incidence and US Death Rates^a Stomach Cancer, Both Sexes

Joinpoint Analyses for Whites and Blacks from 1975-2005
and for Asian/Pacific Islanders, American Indians/Alaska Natives and Hispanics from 1992-2005

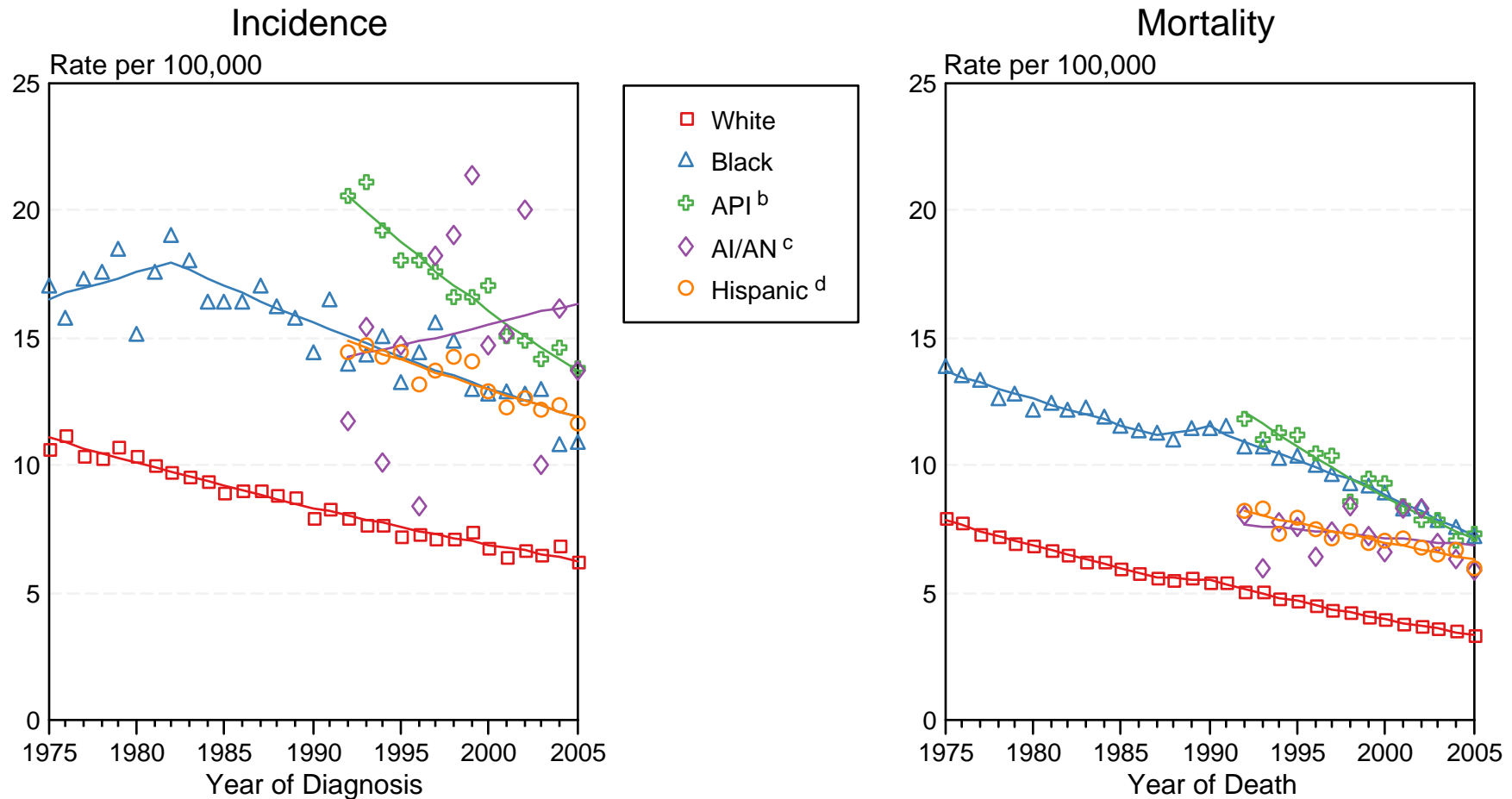


Figure XXIV-2

Source: Incidence data for whites and blacks are from the SEER 9 areas (San Francisco, Connecticut, Detroit, Hawaii, Iowa, New Mexico, Seattle, Utah, Atlanta). Incidence data for Asian/Pacific Islanders, American Indians/Alaska Natives and Hispanics are from the SEER 13 Areas (SEER 9 Areas, San Jose-Monterey, Los Angeles, Alaska Native Registry and Rural Georgia). Mortality data are from US Mortality Files, National Center for Health Statistics, CDC.

^a Rates are age-adjusted to the 2000 US Std Population (19 age groups - Census P25-1103).

Regression lines are calculated using the Joinpoint Regression Program Version 3.3.1, April 2008, National Cancer Institute. Joinpoint analyses for Whites and Blacks during the 1975-2005 period allow a maximum of 4 joinpoints. Analyses for other ethnic groups during the period 1992-2005 allow a maximum of 3 joinpoints.

^b API = Asian/Pacific Islander.

^c AI/AN = American Indian/Alaska Native. Rates for American Indian/Alaska Native are based on the CHSDA(Contract Health Service Delivery Area) counties.

^d Hispanic is not mutually exclusive from whites, blacks, Asian/Pacific Islanders, and American Indians/Alaska Natives. Incidence data for Hispanics are based on NHIA and exclude cases from the Alaska Native Registry. Mortality data for Hispanics exclude cases from Connecticut, Maine, Maryland, Minnesota, New Hampshire, New York, North Dakota, Oklahoma, and Vermont.