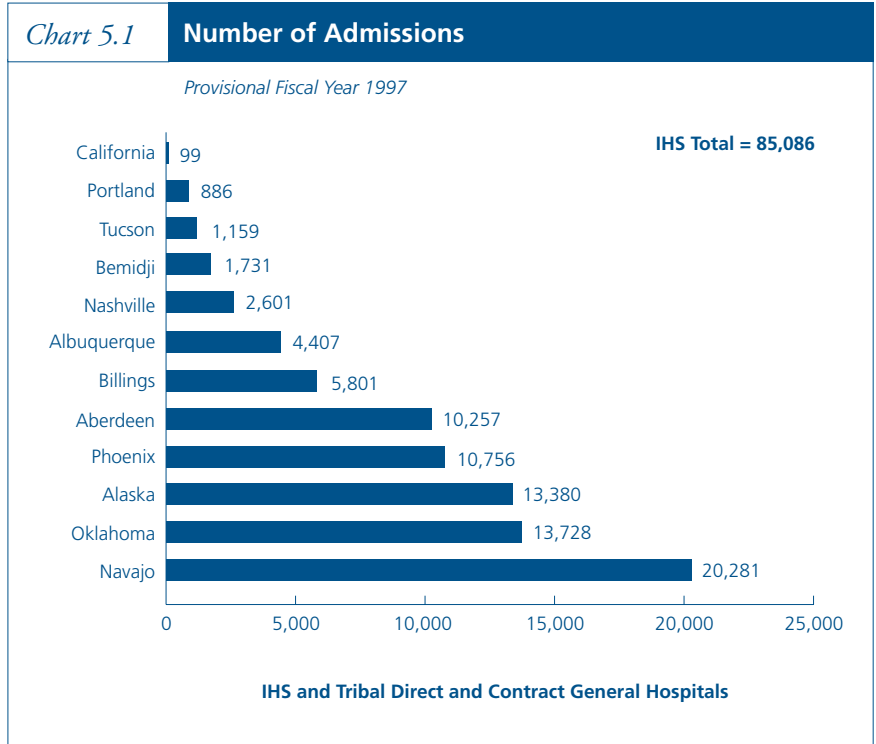


Part 5: Patient Care Statistics

In FY 1997 (provisional), there were over 85,000 admissions to IHS and Tribal direct and contract general hospitals. Approximately 40 percent of these admissions (provisional) were in two IHS Areas, Navajo (20,281) and Oklahoma (13,728).



The IHS admission rate of 654.2 admissions per 10,000 user population in FY 1997 (provisional) was 43 percent lower than the U.S. All Races rate of 1,143.0 in CY 1997. The IHS Area rates (provisional) ranged from 15.7 in California, where the IHS provides little inpatient care, to 1,267.8 in Alaska.

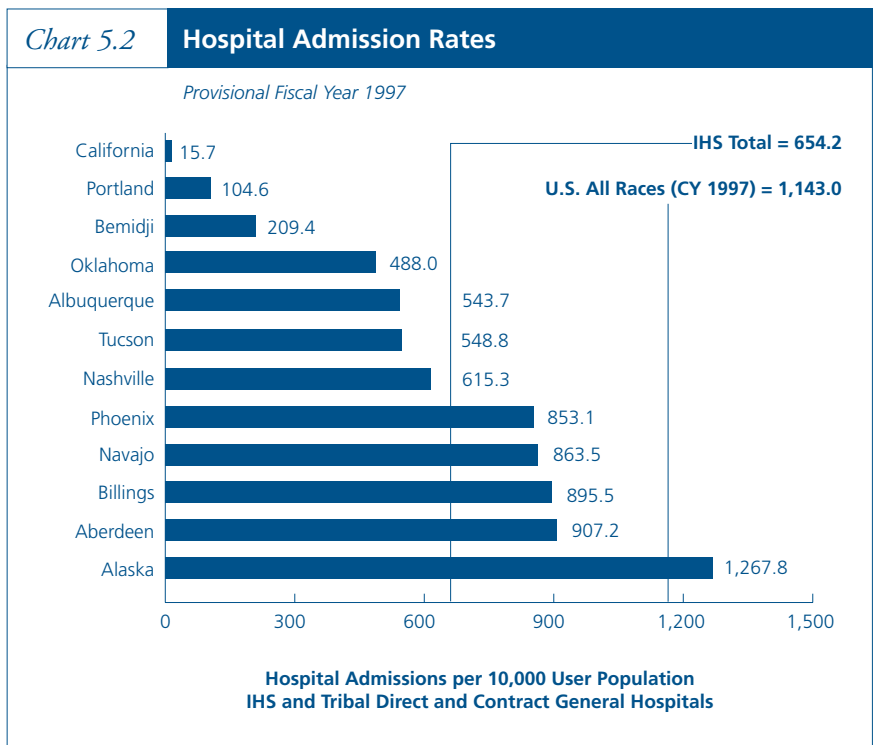




Table 5.1 Number and Rate of Admissions

*Indian Health Service and Tribal Direct and
Contract General Hospitals, Provisional FY 1997
U.S. Short-Stay Community Hospitals, CY 1997*

	Total		IHS Admissions		Tribal Admissions	
	Admission Rate ¹	Total Admissions	Direct	Contract	Direct	Contract
U.S. All Races	1,143.0	30,914 ²				
All IHS Areas	654.2	85,086	56,219	13,932	12,188	2,747
Aberdeen	907.2	10,257	7,006	3,251	0	0
Alaska	1,267.8	13,380	5,645	267	6,070	1,398
Albuquerque	543.7	4,407	3,141	1,266	0	0
Bemidji	209.4	1,731	1,069	430	0	232
Billings	895.5	5,801	3,468	2,166	0	167
California	15.7	99	0	0	0	99
Nashville	615.3	2,601	1,047	253	570	731 ³
Navajo	863.5	20,281	18,419	1,862	0	0
Oklahoma	488.0	13,728	6,856	1,893	4,979	0
Phoenix	853.1	10,756	8,652	1,533	569	2
Portland	104.6	886	0	768	0	118
Tucson	548.8	1,159	916	243	0	0

¹ Number of admissions per 10,000 population.

² Number of admissions in thousands.

³ FY 1997 not available; used FY 1996 as estimate.

SOURCES: IHS and Tribal Direct: Monthly Report of Inpatient Services
IHS Contract: Contract Statistical System (Report 3I)
Tribal Contract: IHS Area submissions
U.S.: Unpublished Data, NCHS Hospital Discharge Survey Branch



The number of inpatient days in IHS and Tribal direct and contract general hospitals was more than 358,000 in FY 1997 (provisional). The number (provisional) varied considerably among the IHS Areas, ranging from 505 in California to 76,066 in Navajo.

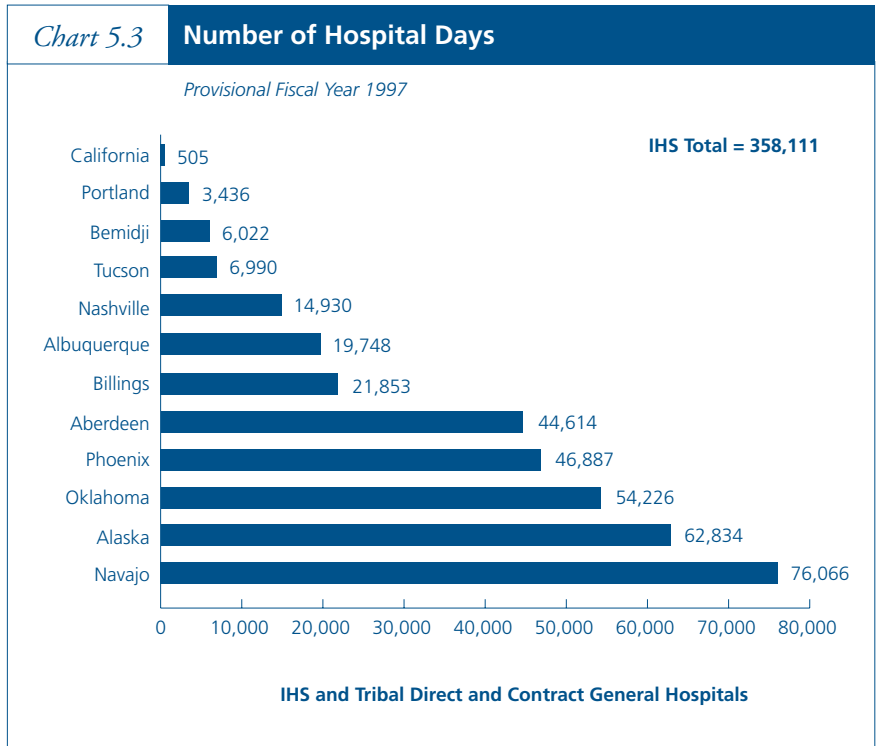


Table 5.3 Number of Hospital Days

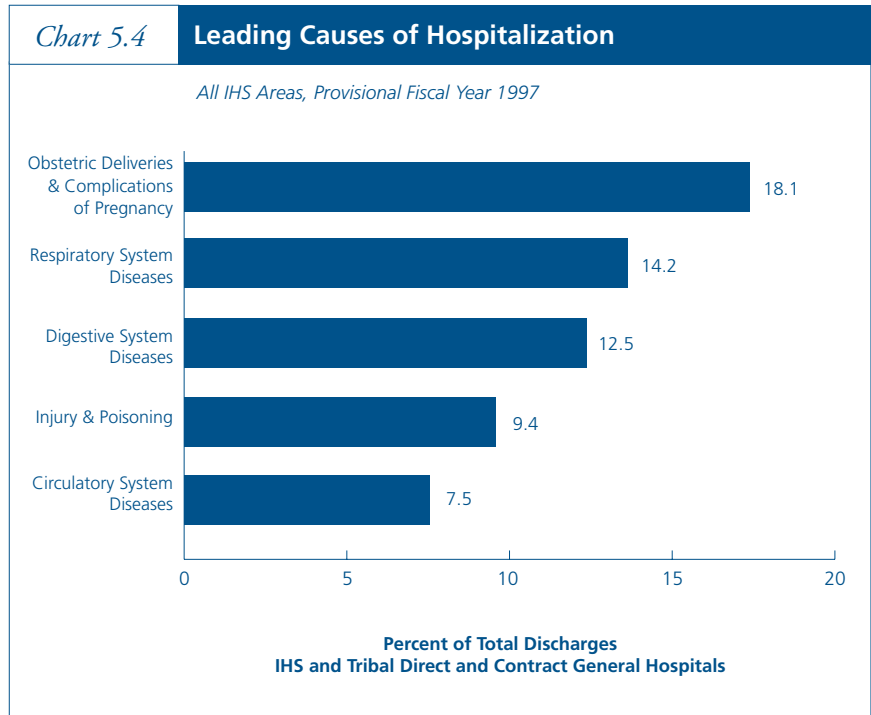
Indian Health Service and Tribal Direct and Contract General Hospitals, Provisional FY 1997

	Total Days	IHS Days		Tribal Days	
		Direct	Contract	Direct	Contract
All IHS Areas	358,111	234,077	68,584	44,970	10,480
Aberdeen	44,614	28,600	16,014	0	0
Alaska	62,834	35,616	1,929	21,381	3,908
Albuquerque	19,748	14,295	5,453	0	0
Bemidji	6,022	3,542	1,724	0	756
Billings	21,853	10,575	10,514	0	764
California	505	0	0	0	505
Nashville	14,930	6,205	1,285	3,321	4,119 ¹
Navajo	76,066	66,354	9,712	0	0
Oklahoma	54,226	25,774	10,778	17,674	0
Phoenix	46,887	37,324	6,965	2,594	4
Portland	3,436	0	3,012	0	424
Tucson	6,990	5,792	1,198	0	0

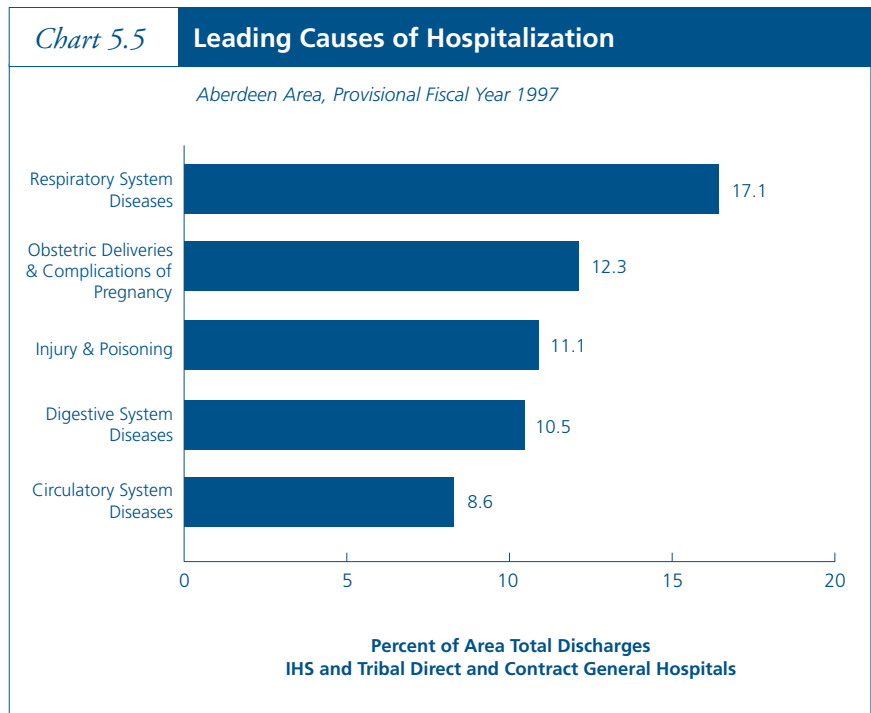
¹ FY 1997 not available; used FY 1996 as estimate.

SOURCES: IHS and Tribal Direct: Monthly Report of Inpatient Services
 IHS Contract: Contract Statistical System (Report 3I)
 Tribal Contract: IHS Area submissions

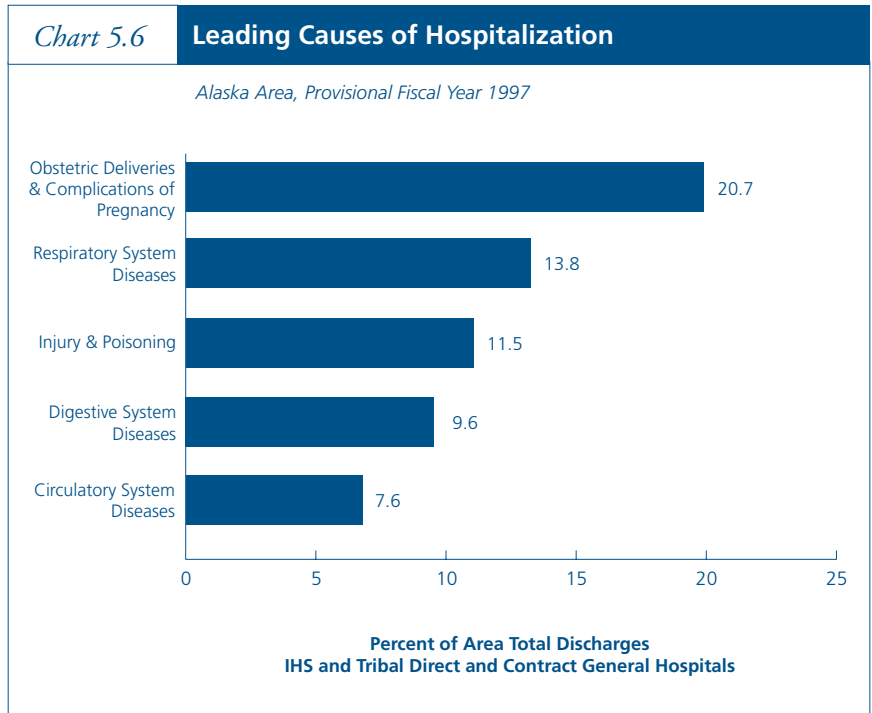
In FY 1997 (provisional), 18.1 percent of all discharges from IHS and Tribal direct and contract general hospitals pertained to obstetric deliveries and complications of pregnancy. This was followed by respiratory system diseases at 14.2 percent.



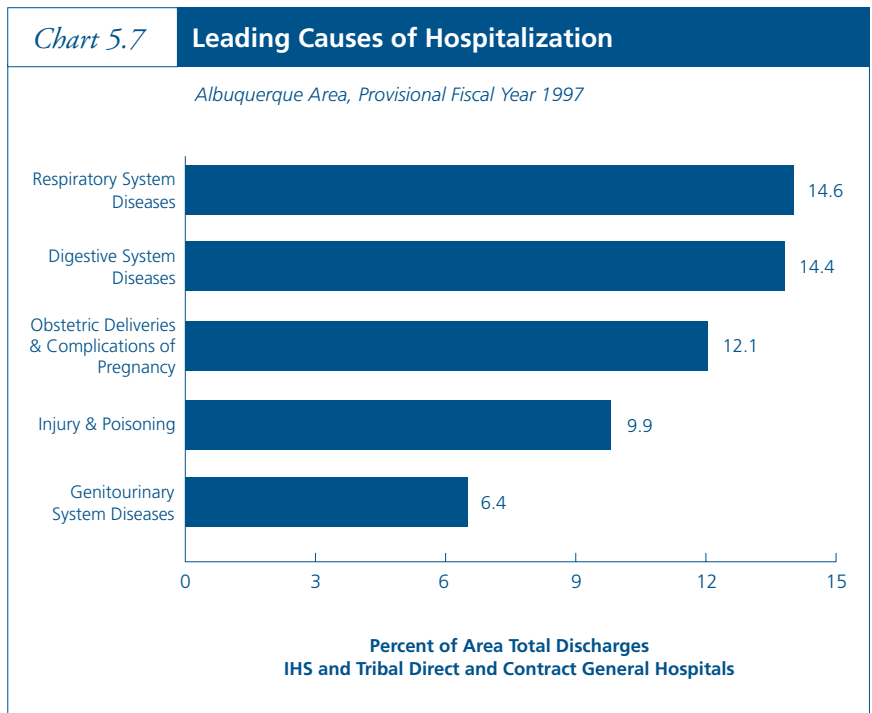
For the Aberdeen Area in FY 1997 (provisional), 17.1 percent of all discharges from IHS and Tribal direct and contract general hospitals pertained to respiratory system diseases. This was followed by obstetric deliveries and complications of pregnancy at 12.3 percent.



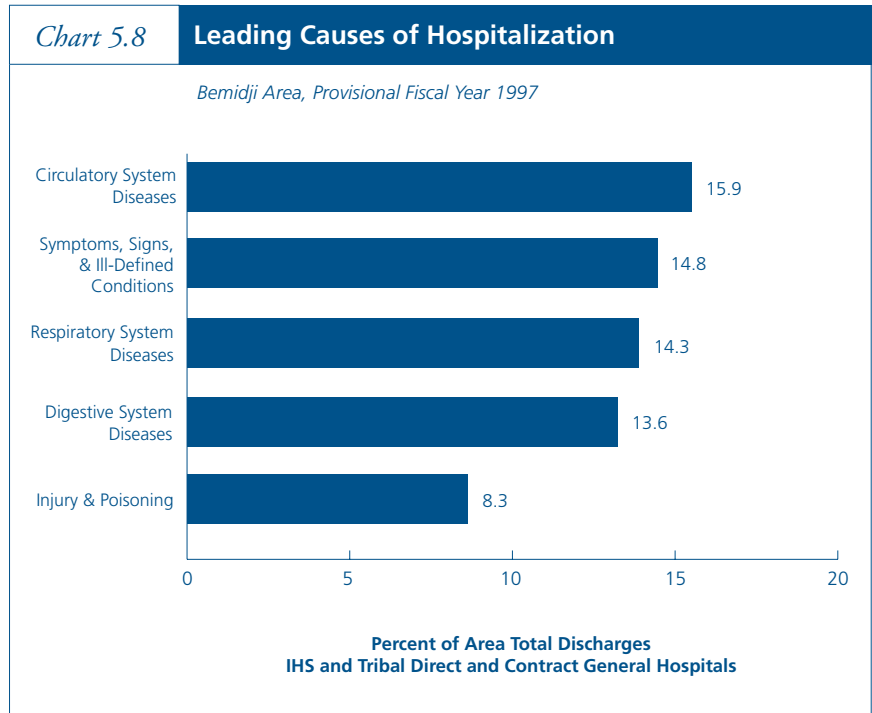
For the Alaska Area in FY 1997 (provisional), 20.7 percent of all discharges from IHS and Tribal direct and contract general hospitals pertained to obstetric deliveries and complications of pregnancy. This was followed by respiratory system diseases at 13.8 percent.



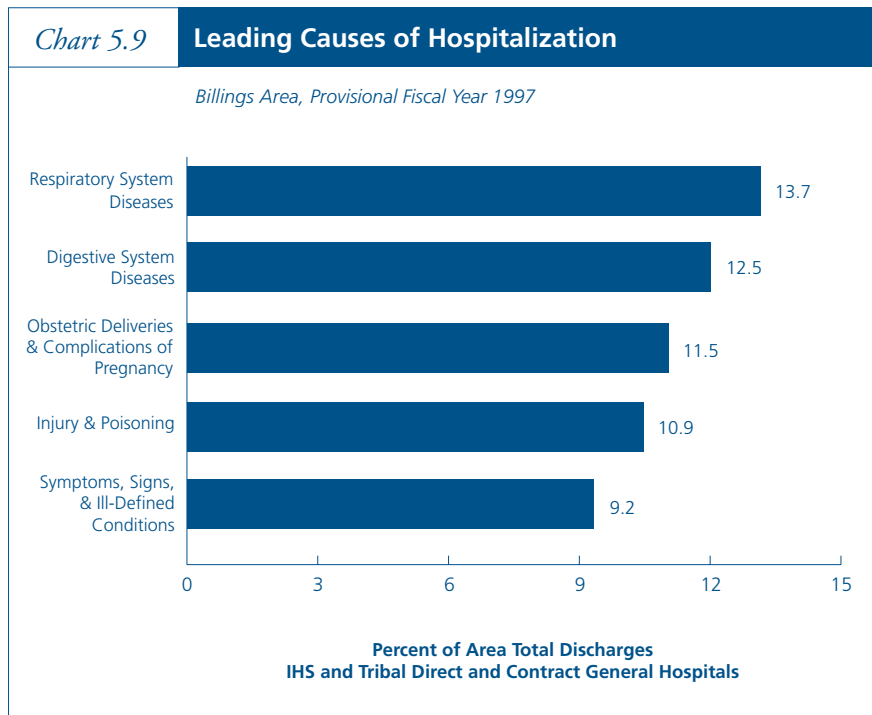
For the Albuquerque Area in FY 1997 (provisional), 14.6 percent of all discharges from IHS and Tribal direct and contract general hospitals pertained to respiratory system diseases. This was closely followed by digestive system diseases at 14.4 percent.



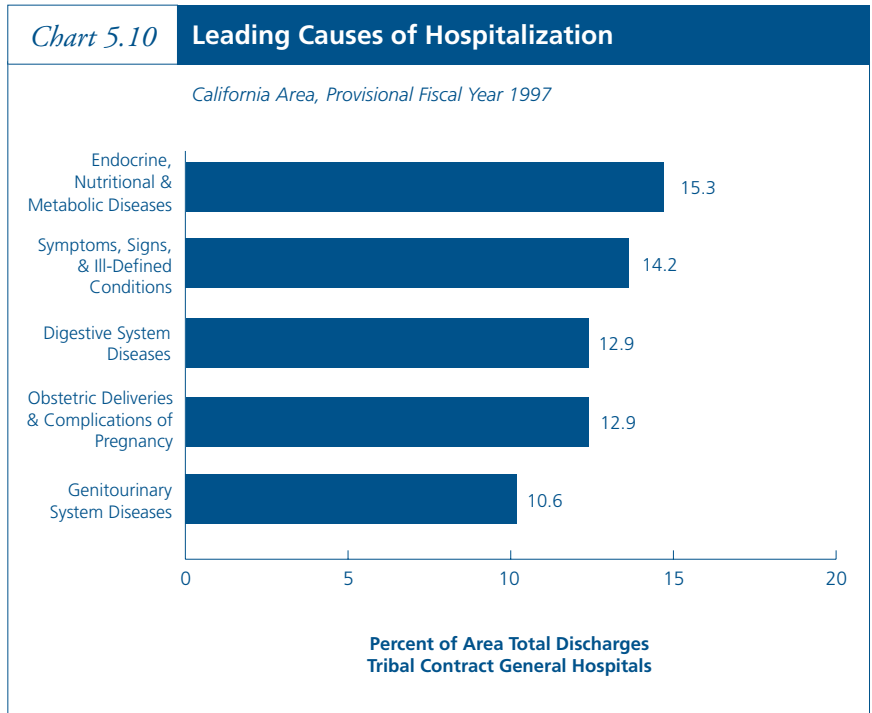
For the Bemidji Area in FY 1997 (provisional), 15.9 percent of all discharges from IHS and Tribal direct and contract general hospitals pertained to circulatory system diseases. This was followed by symptoms, signs, and ill-defined conditions at 14.8 percent.



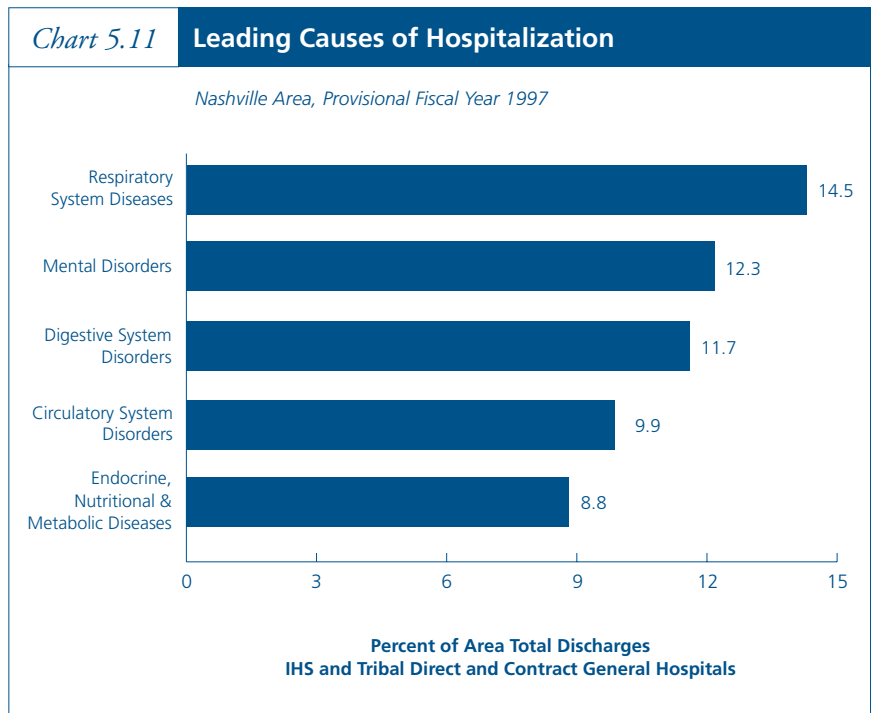
For the Billings Area in FY 1997 (provisional), 13.7 percent of all discharges from IHS and Tribal direct and contract general hospitals pertained to respiratory system diseases. This was followed by digestive system diseases at 12.5 percent.



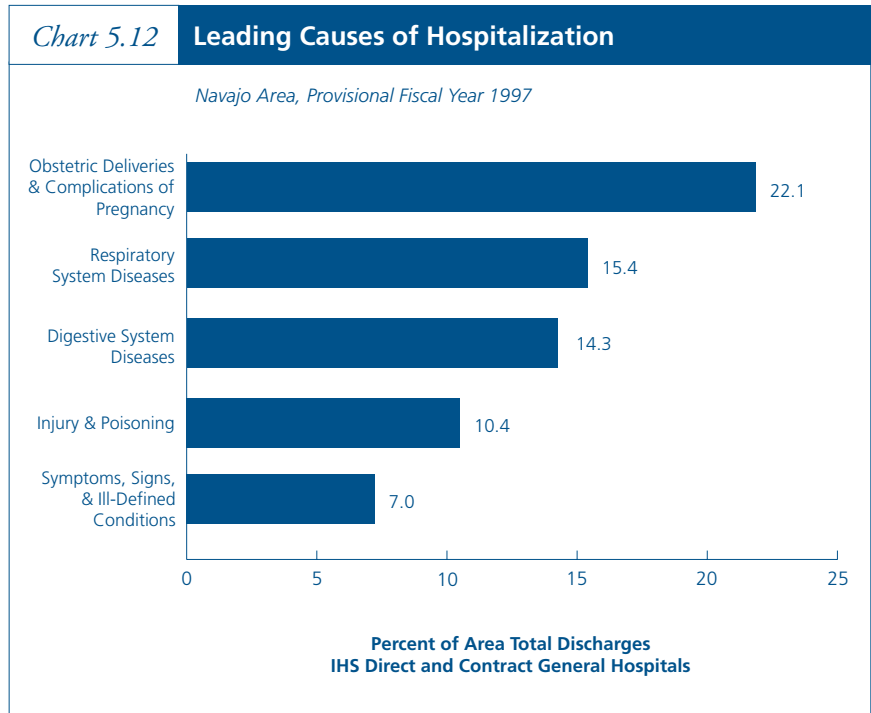
For the California Area in FY 1997 (provisional), 15.3 percent of all discharges from Tribal contract health service hospitals pertained to endocrine, nutritional, and metabolic diseases. This was followed by symptoms, signs, and ill-defined conditions at 14.2 percent.



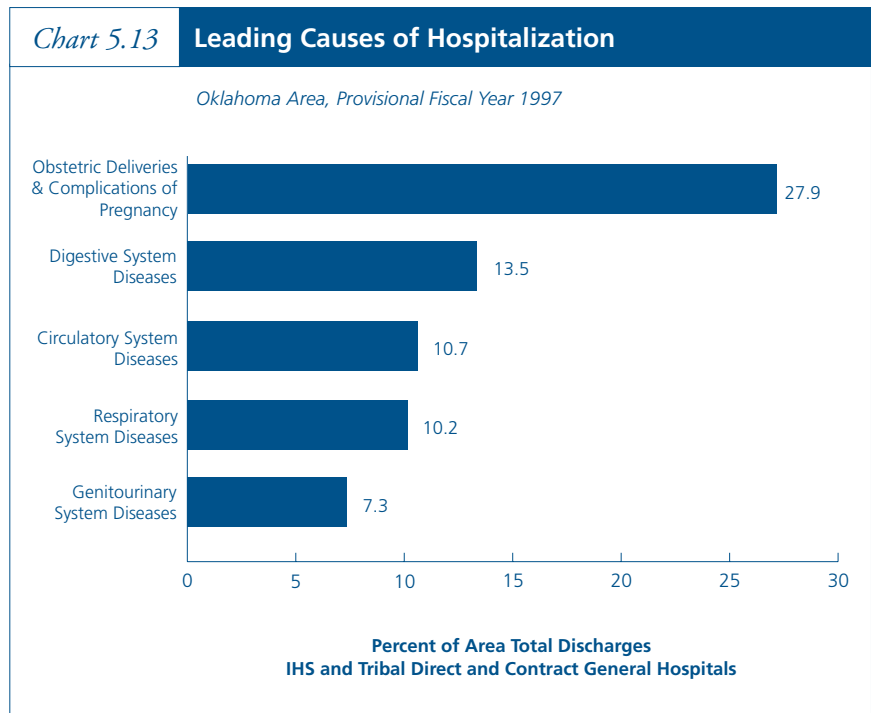
For the Nashville Area in FY 1997 (provisional), 14.5 percent of all discharges from IHS and Tribal direct and contract general hospitals pertained to respiratory system diseases. This was followed by mental disorders at 12.3 percent.



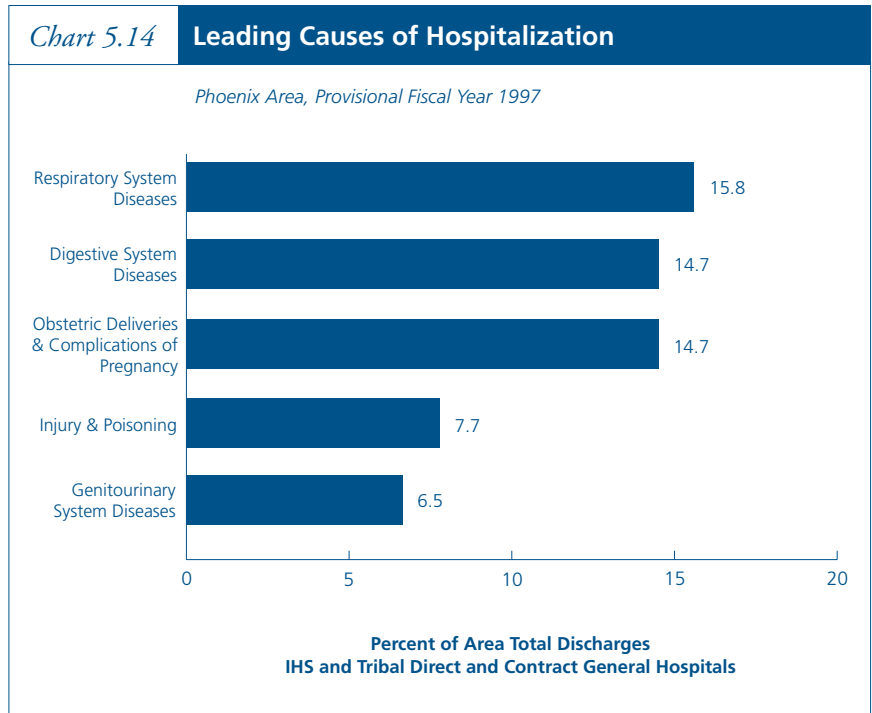
For the Navajo Area in FY 1997 (provisional), 22.1 percent of all discharges from IHS direct and contract general hospitals pertained to obstetric deliveries and complications of pregnancy. This was followed by respiratory system diseases at 15.4 percent.



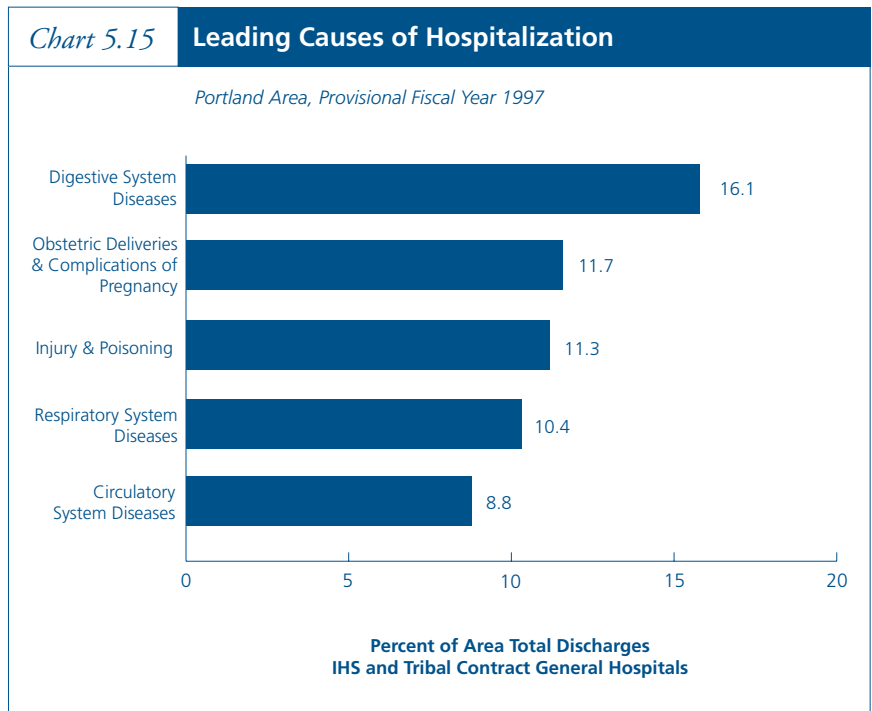
For the Oklahoma Area in FY 1997 (provisional), 27.9 percent of all discharges from IHS and Tribal direct and contract general hospitals pertained to obstetric deliveries and complications of pregnancy. This was followed by digestive system diseases at 13.5 percent.



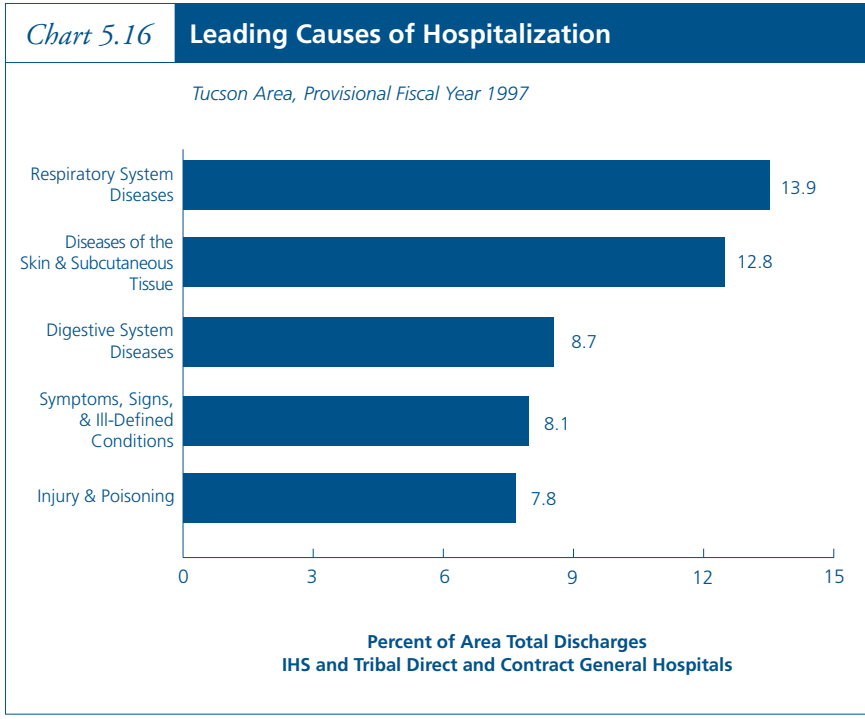
For the Phoenix Area in FY 1997 (provisional), 15.8 percent of all discharges from IHS and Tribal direct and contract general hospitals pertained to respiratory system diseases. This was followed by digestive system diseases and obstetric deliveries and complications of pregnancy, each at 14.7 percent.



For the Portland Area in FY 1997 (provisional), 16.1 percent of all discharges from IHS and Tribal contract general hospitals pertained to digestive system diseases. This was followed by obstetric deliveries and complications of pregnancy at 11.7 percent.



For the Tucson Area in FY 1997 (provisional), 13.9 percent of all discharges from IHS and Tribal direct and contract general hospitals pertained to respiratory system diseases. This was followed by diseases of the skin and subcutaneous tissue at 12.8 percent.



In FY 1997 (provisional), there were more than 7.3 million ambulatory medical visits to IHS and Tribal direct and contract facilities. Two IHS Areas had 32 percent of the visits (provisional), Oklahoma (1,333,944) and Navajo (1,004,195).

Chart 5.17

Number of Ambulatory Medical Visits

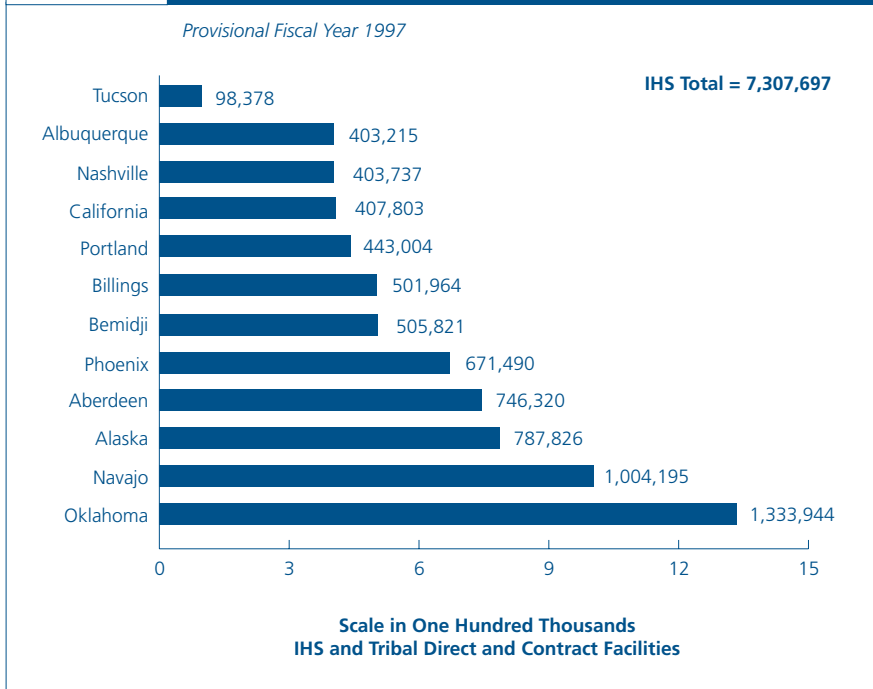


Table 5.17

Number of Ambulatory Medical Visits

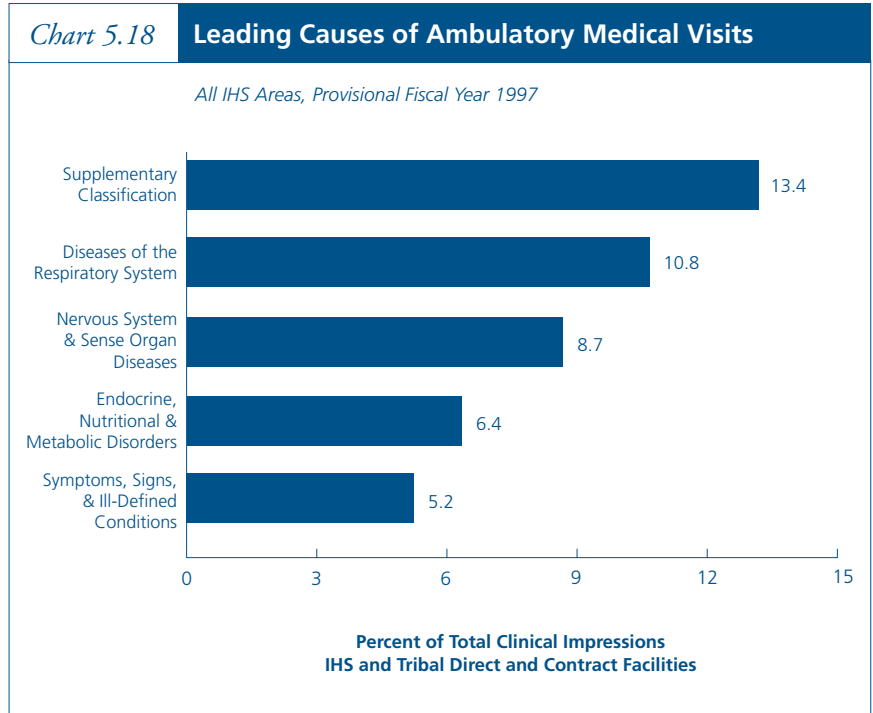
Indian Health Service and Tribal Direct and Contract Facilities, Provisional FY 1997

	Total	Indian Health Service		Tribal	
		Direct	Contract	Direct	Contract
All IHS Areas	7,307,697	4,288,120	129,459	2,710,775	179,343
Aberdeen	746,320	675,587	17,080	53,653	0
Alaska	787,826	214,487	2,782	504,181	66,376
Albuquerque	403,215	365,346	7,823	30,046	0
Bemidji	505,821	147,206	6,234	343,021	9,360
Billings	501,964	390,978	10,847	76,636	23,503
California	407,803	0	0	371,814	35,989
Nashville	403,737	64,877	2,051	302,638 ¹	34,171 ¹
Navajo	1,004,195	971,830	32,365	0	0
Oklahoma	1,333,944	684,885	15,760	633,296	3
Phoenix	671,490	483,742	14,889	172,442	417
Portland	443,004	206,153	18,234	209,093	9,524
Tucson	98,378	83,029	1,394	13,955	0

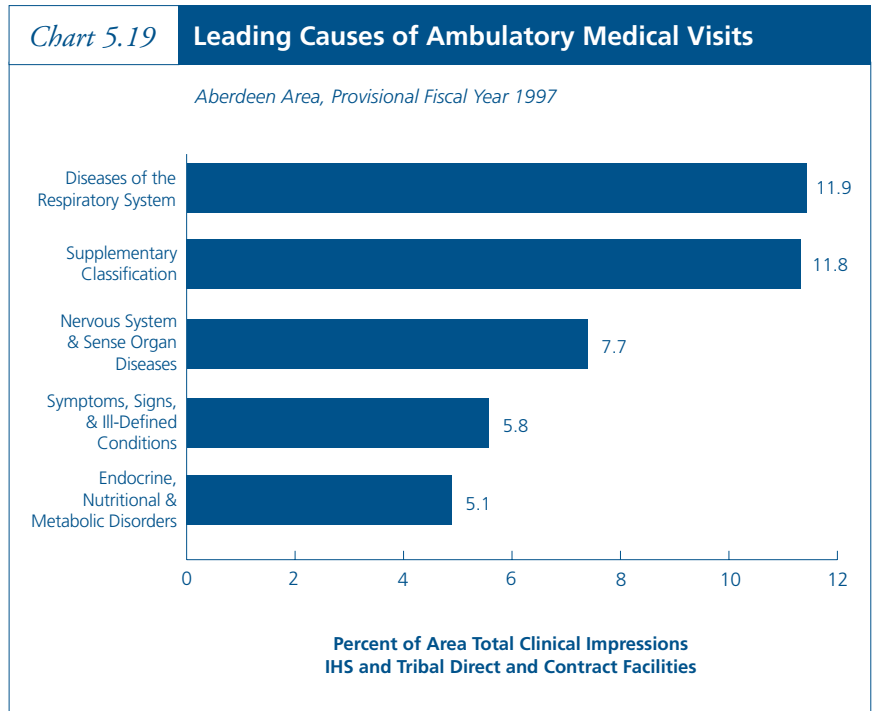
¹ FY 1997 not available; used FY 1996 as estimate.

SOURCES: IHS Direct: APC Data System (Report 1A)
IHS Contract: Contract Statistical System (Report 3G)
Tribal Direct and Contract: Area Submissions

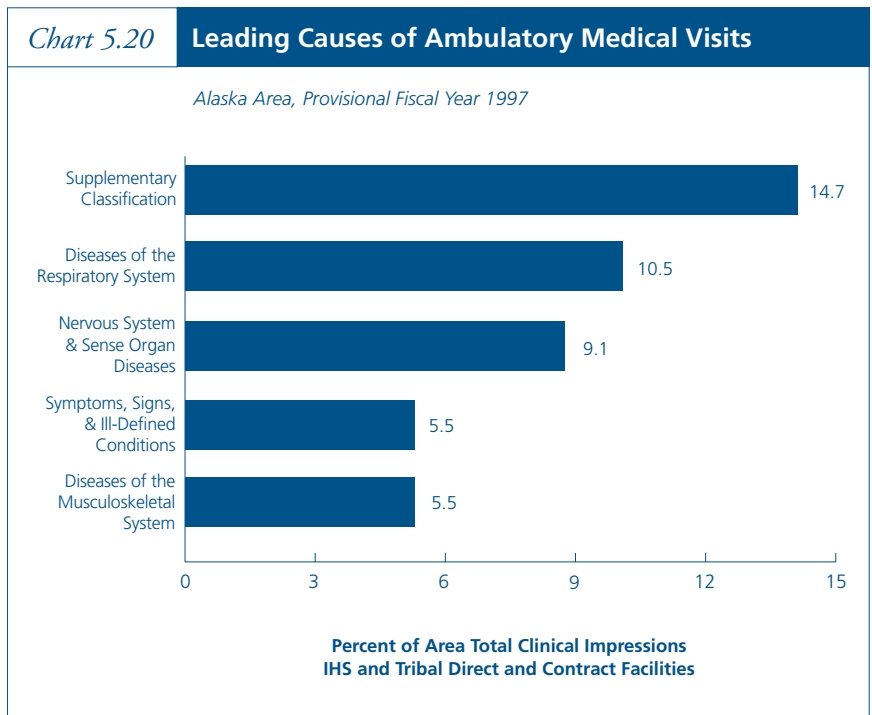
In FY 1997 (provisional), 13.4 percent of all clinical impressions in IHS and Tribal direct and contract facilities pertained to supplementary classifications. This was followed by diseases of the respiratory system at 10.8 percent.



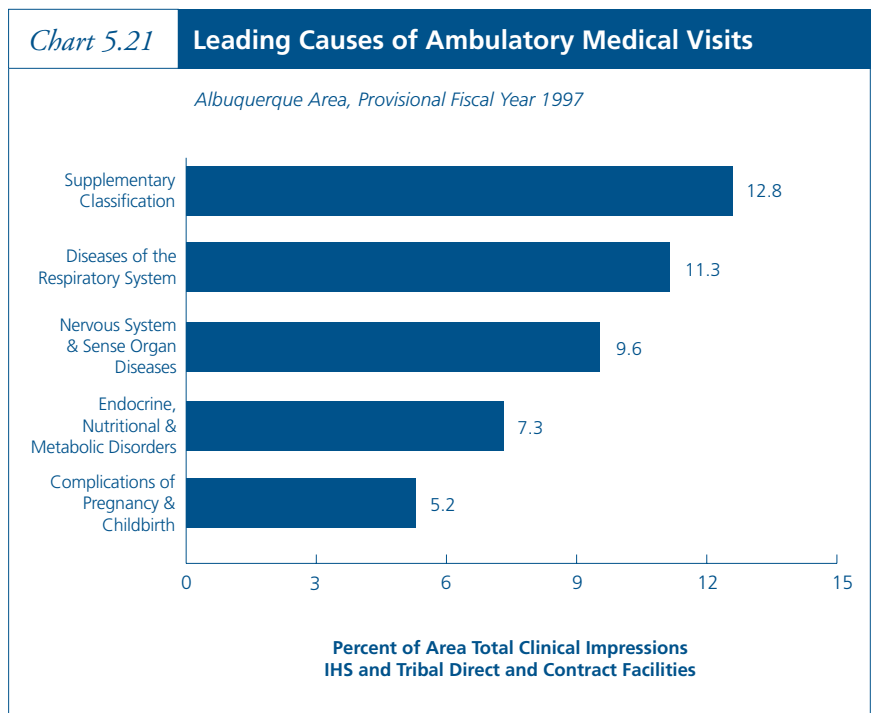
For the Aberdeen Area in FY 1997 (provisional), 11.9 percent of all clinical impressions in IHS and Tribal direct and contract facilities pertained to diseases of the respiratory system. This was followed by supplementary classifications at 11.8 percent.



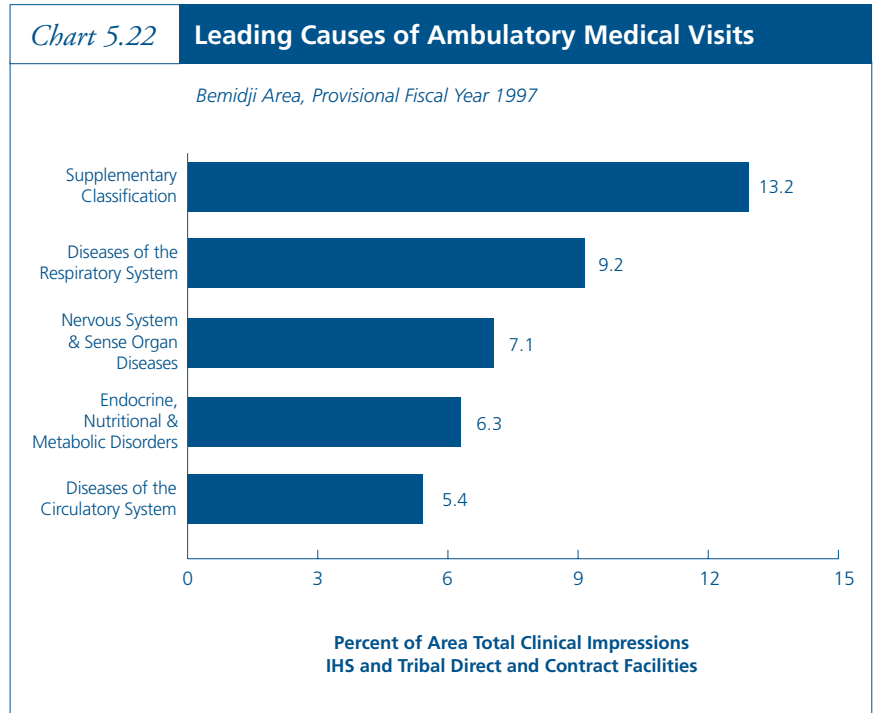
For the Alaska Area in FY 1997 (provisional), 14.7 percent of all clinical impressions in IHS and Tribal direct and contract facilities pertained to supplementary classifications. This was followed by diseases of the respiratory system at 10.5 percent.



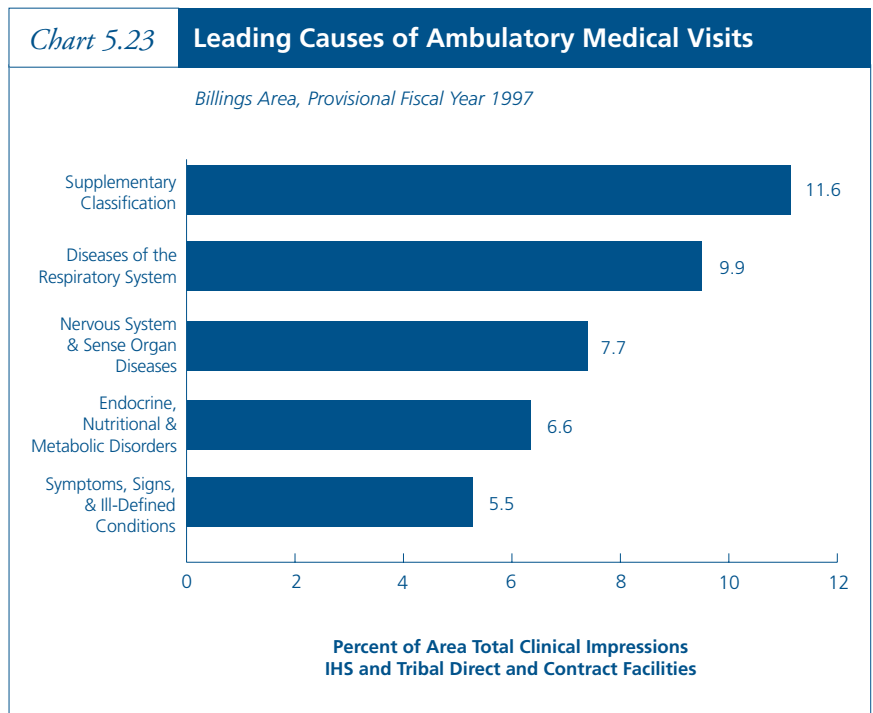
For the Albuquerque Area in FY 1997 (provisional), 12.8 percent of all clinical impressions in IHS and Tribal direct and contract facilities pertained to supplementary classifications. This was followed by diseases of the respiratory system at 11.3 percent.



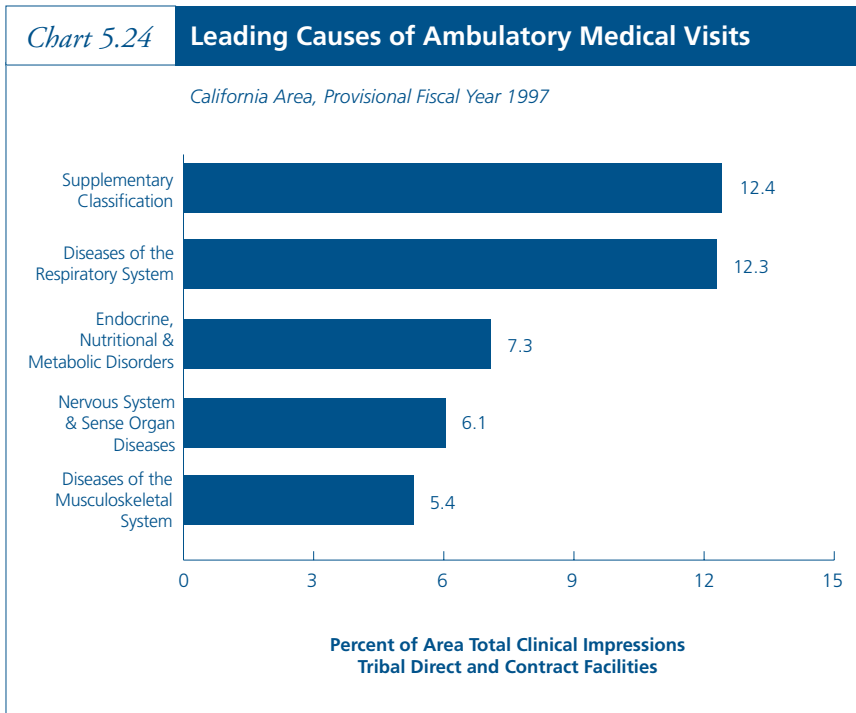
For the Bemidji Area in FY 1997 (provisional), 13.2 percent of all clinical impressions in IHS and Tribal direct and contract facilities pertained to supplementary classifications. This was followed by diseases of the respiratory system at 9.2 percent.



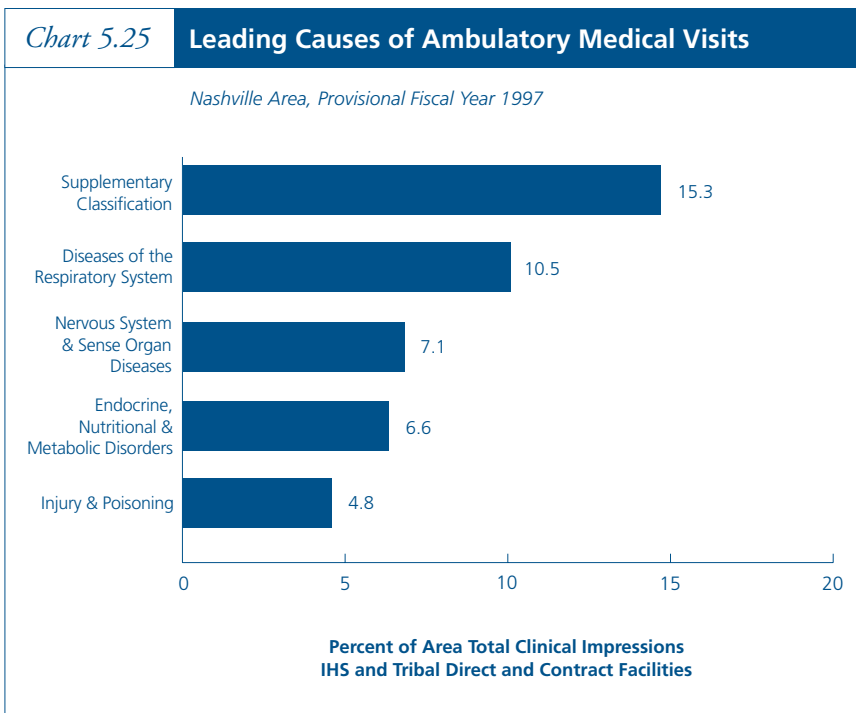
For the Billings Area in FY 1997 (provisional), 11.6 percent of all clinical impressions in IHS and Tribal direct and contract facilities pertained to supplementary classifications. This was followed by diseases of the respiratory system at 9.9 percent.



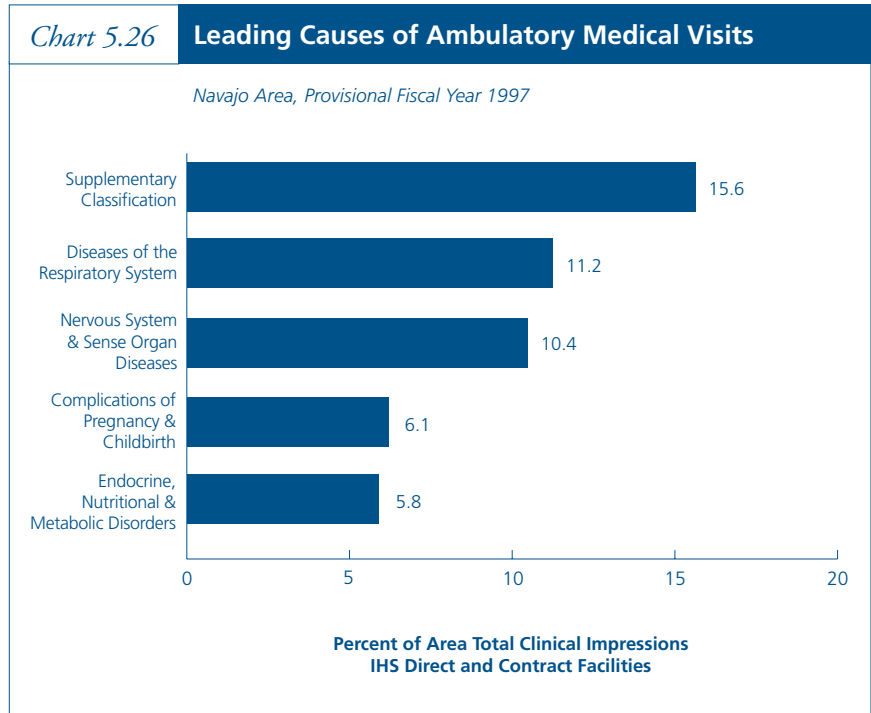
For the California Area in FY 1997 (provisional), 12.4 percent of all clinical impressions in Tribal direct and contract facilities pertained to supplementary classifications. This was followed by diseases of the respiratory system at 12.3 percent.



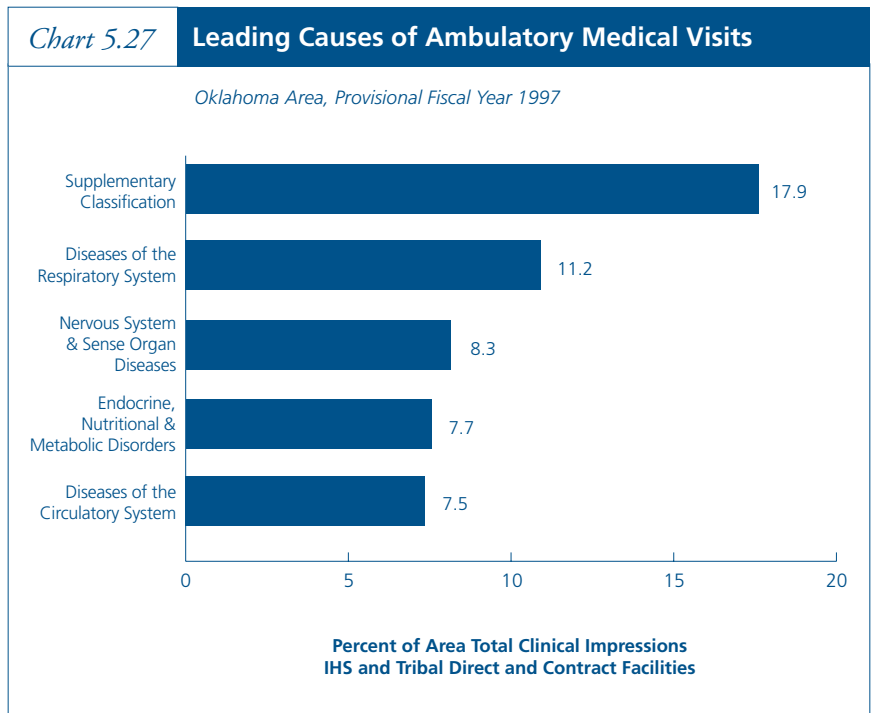
For the Nashville Area in FY 1997 (provisional), 15.3 percent of all clinical impressions in IHS and Tribal direct and contract facilities pertained to supplementary classifications. This was followed by diseases of the respiratory system at 10.5 percent.



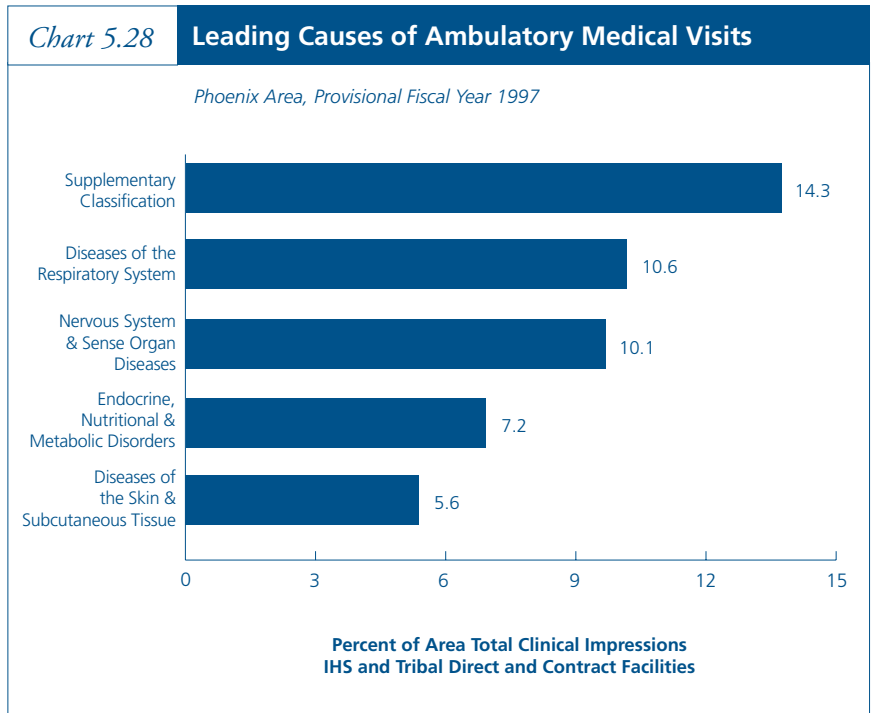
For the Navajo Area in FY 1997 (provisional), 15.6 percent of all clinical impressions in IHS direct and contract facilities pertained to supplementary classifications. This was followed by diseases of the respiratory system at 11.2 percent.



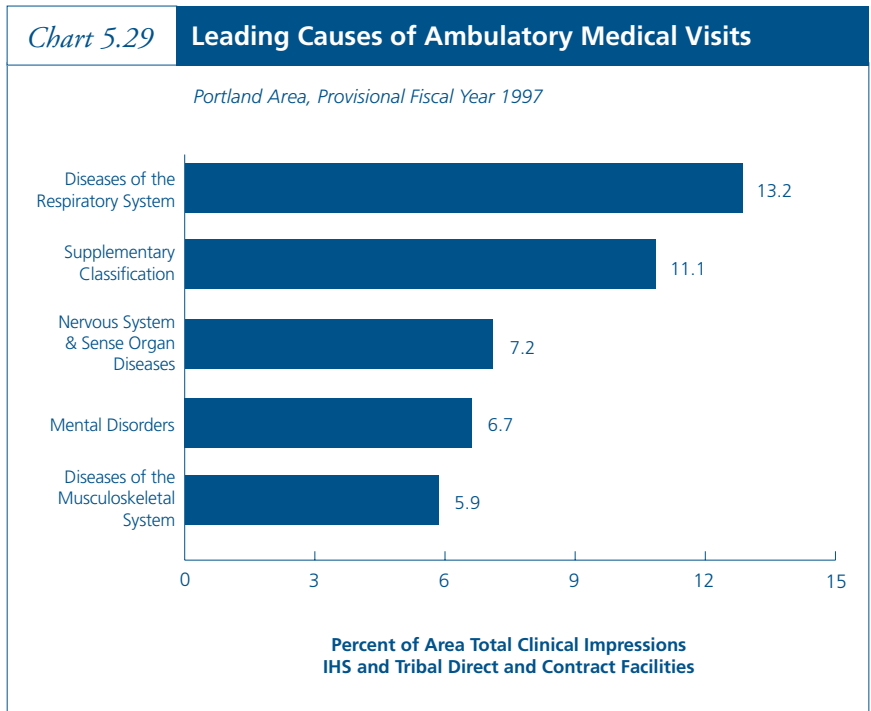
For the Oklahoma Area in FY 1997 (provisional), 17.9 percent of all clinical impressions in IHS and Tribal direct and contract facilities pertained to supplementary classifications. This was followed by diseases of the respiratory system at 11.2 percent.



For the Phoenix Area in FY 1997 (provisional), 14.3 percent of all clinical impressions in IHS and Tribal direct and contract facilities pertained to supplementary classifications. This was followed by diseases of the respiratory system at 10.6 percent.



For the Portland Area in FY 1997 (provisional), 13.2 percent of all clinical impressions in IHS and Tribal direct and contract facilities pertained to diseases of the respiratory system. This was followed by supplementary classifications at 11.1 percent.

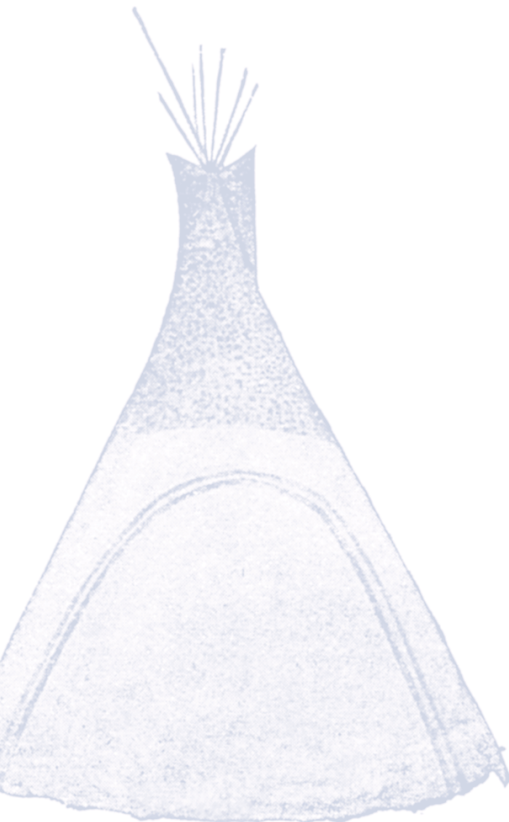
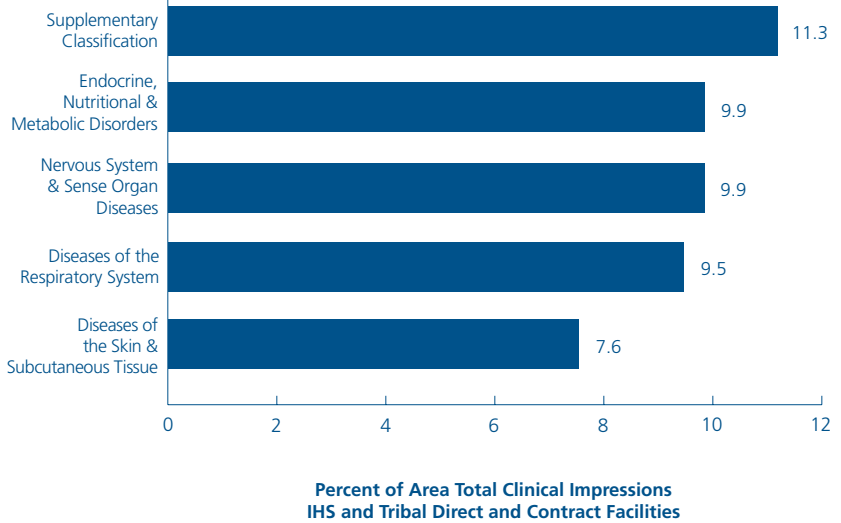


For the Tucson Area in FY 1997 (provisional), 11.3 percent of all clinical impressions in IHS and Tribal direct and contract facilities pertained to supplementary classifications. This was followed by endocrine, nutritional, and metabolic disorders and nervous system and sense organ diseases, each at 9.9 percent.

Chart 5.30

Leading Causes of Ambulatory Medical Visits

Tucson Area, Provisional Fiscal Year 1997



Indian women of childbearing age (15 to 44 years) had family planning visits to IHS and Tribal direct and contract facilities in FY 1997 (provisional) at a rate of 573.0 visits per 1,000 women (15 to 44 years). The rate (provisional) varied considerably by IHS Area, ranging from 268.7 in California to 838.1 in Alaska.

Chart 5.31

Family Planning Visit Rates

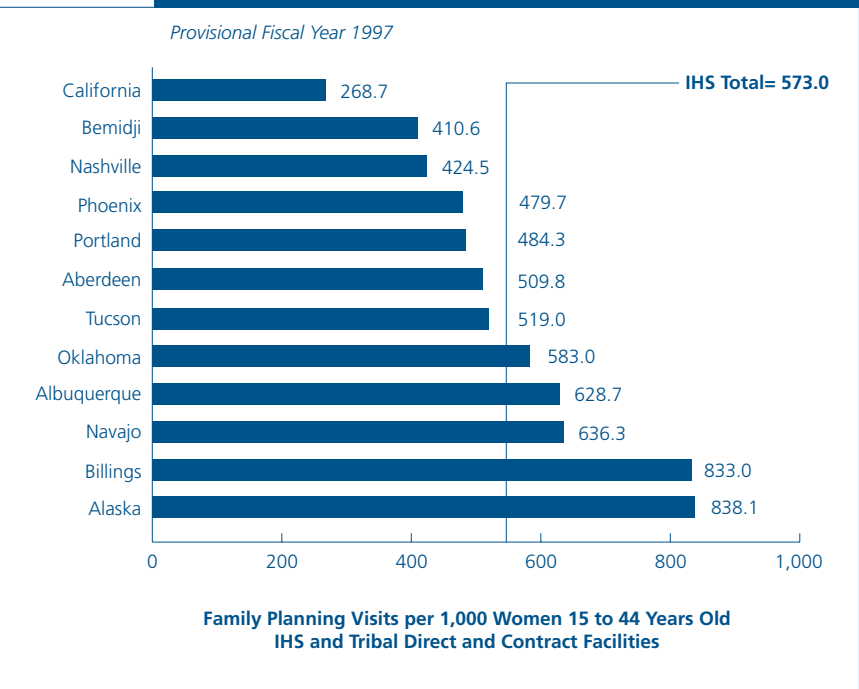


Table 5.31

Number and Rate of Family Planning Visits

Indian Health Service and Tribal Direct and Contract Facilities, Provisional FY 1997

	Total Visit Rate ¹	Total Visits	Direct Visits	Contract Visits	Women 15 to 44 Years
All IHS Areas	573.0	185,282	183,799	1,483	323,328
Aberdeen	509.8	13,955	13,928	27	27,373
Alaska	838.1	21,242	21,237	5	25,344
Albuquerque	628.7	13,702	13,648	54	21,794
Bemidji	410.6	7,705	7,635	70	18,767
Billings	833.0	13,094	12,930	164	15,720
California	268.7	4,283	4,277	6	15,940
Nashville	424.5	3,801	3,801	0	8,954
Navajo	636.3	35,707	34,910	797	56,115
Oklahoma	583.0	42,447	42,410	37	72,809
Phoenix	479.7	16,036	15,974	62	33,432
Portland	484.3	10,380	10,130	250	21,434
Tucson	519.0	2,930	2,919	11	5,646

¹ Number of family planning visits per 1,000 women of childbearing age (15-44 years) in the IHS user population.

SOURCES: IHS Direct: APC Data System (Report 1A)
IHS Contract: Contract Statistical System (Report 3G)
Tribal Direct and Contract: Area Submissions

In FY 1998, 88.0 percent of Indian children, 0-27 months, residing in the IHS service area received all required immunizations. In the general population in CY 1996, 77.0 percent of children ages 19 to 35 months received all required immunizations. The Nashville Area had the lowest IHS rate at 78.0 percent, while the Phoenix Area had the highest rate, 96.0.

Chart 5.32

Immunization Rates, 0-27 Months

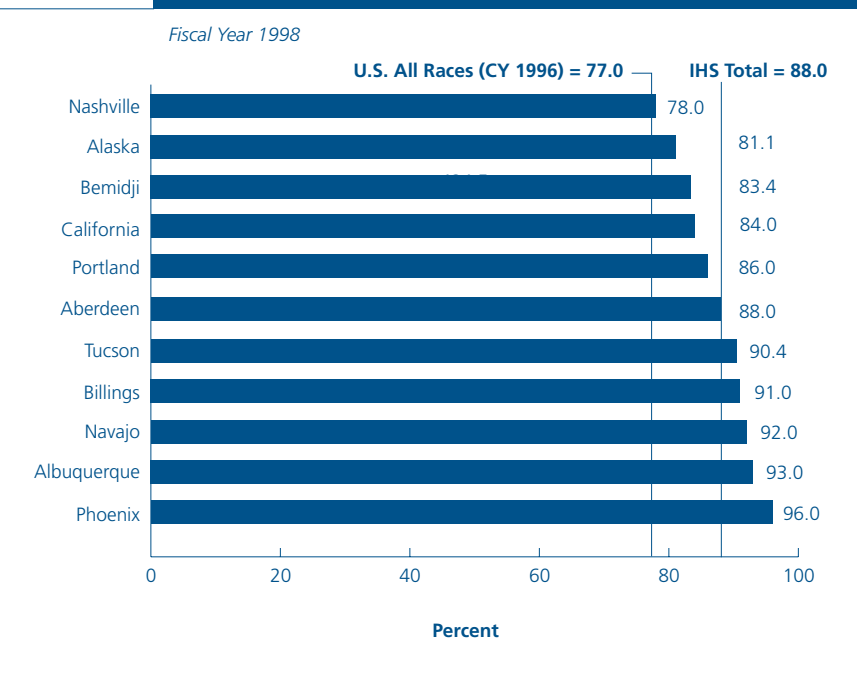


Table 5.32

Population and Rate of Immunizations, 0-27 Months

Fiscal Year 1998

	Population Immunized	Immunization Rate ¹
U.S. All Races ²		77.0
All IHS Areas	77,404	88.0
Aberdeen	15,233	88.0
Alaska	3,342	81.1
Albuquerque	7,546	93.0
Bemidji	1,880	83.4
Billings	8,465	91.0
California	5,676	84.0
Nashville	1,298	78.0
Navajo	29,097	92.0
Oklahoma ³	—	—
Phoenix	1,060	96.0
Portland	2,021	86.0
Tucson	1,786	90.4

¹ Number of children who have completed all required immunizations divided by the service population for the age group.
² Vaccination coverage levels among children ages 19-35 months, 1996.
³ Data not reported to IHS.

SOURCES: U.S. - National Immunization Survey, CDC.
 IHS - Area Immunization Coordinators from facility quarterly reports.

In FY 1998, there were nearly 2.1 million dental services provided at IHS and Tribal direct and contract facilities, as reported to the IHS central database. Two IHS Areas provided 37 percent of these dental services, Navajo (391,727) and Oklahoma (378,550).

Chart 5.33

Number of Dental Services Provided

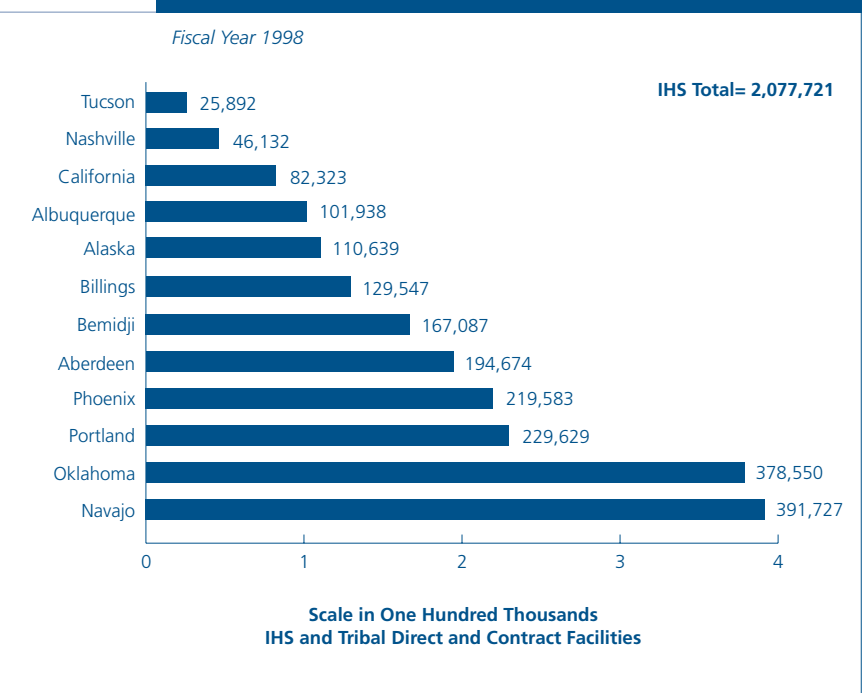


Table 5.33

Number of Dental Services Provided

Indian Health Service and Tribal Direct and Contract Facilities, FY 1998

	Total		IHS Direct		IHS Contract		Tribal Direct		Tribal Contract	
	Patients	Services	Patients	Services	Patients	Services	Patients	Services	Patients	Services
All IHS Areas	318,521	2,077,721	206,385	1,382,583	269	15,773	111,769	673,978	98	5,387
Aberdeen	27,359	194,674	23,962	168,649	0	2,423	3,392	22,926	5	676
Alaska	42,151	110,639	10,110	24,051	20	702	32,021	85,886	0	0
Albuquerque	17,393	101,938	15,596	91,535	151	1,035	1,646	9,368	0	0
Bemidji	26,516	167,087	6,909	38,782	0	305	19,607	127,999	0	1
Billings	18,727	129,547	18,727	129,438	0	109	0	0	0	0
California	9,571	82,323	0	0	0	0	9,571	82,321	0	2
Nashville	3,875	46,132	2,006	11,689	0	46	1,777	32,500	92	1,897
Navajo	54,938	391,727	54,840	389,772	98	1,955	0	0	0	0
Oklahoma	50,848	378,550	30,307	220,779	0	8,165	20,541	149,006	0	600
Phoenix	31,949	219,583	25,277	172,474	0	273	6,672	46,473	0	363
Portland	31,319	229,629	14,776	109,522	0	760	16,542	117,499	1	1,848
Tucson	3,875	25,892	3,875	25,892	0	0	0	0	0	0

SOURCE: IHS Dental Workload Data Reporting System, 1998

The rate of new tuberculosis cases for the IHS in CY 1998 was 2.4 times the rate for the U.S., 16.1 new cases per 100,000 population compared to 6.8. The Tucson Area rate (42.0) was 6.2 times the U.S. rate. However, the Tucson rate should be interpreted with caution since it is only based on 9 cases.

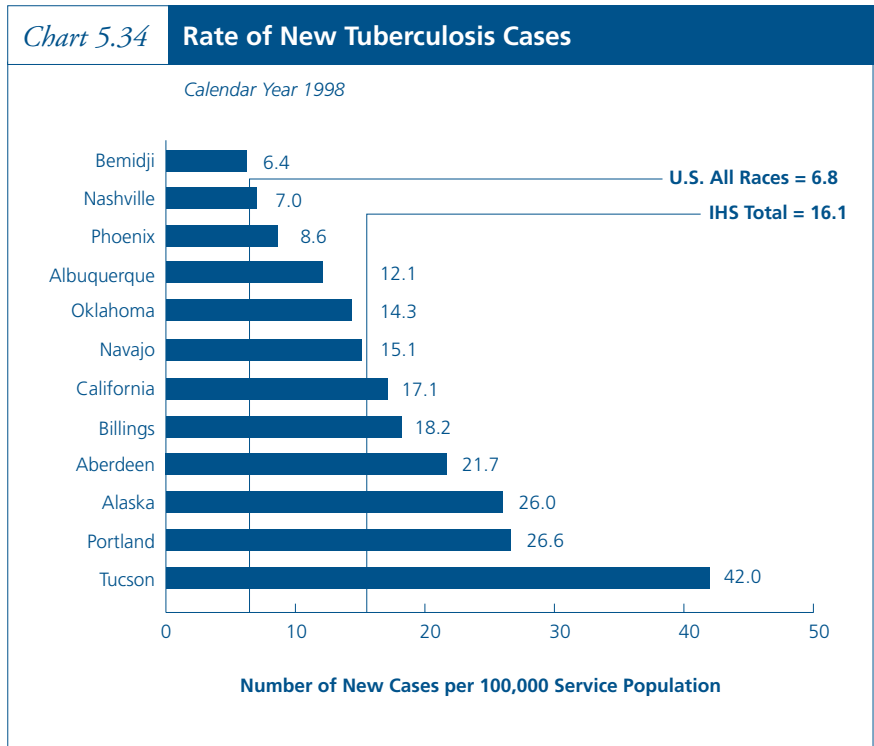


Table 5.34 Number and Rate of New Tuberculosis Cases

Calendar Year 1998

	Case Rate ¹	Number of Cases ¹
U.S. All Races	6.8	18,361
All IHS Areas	16.1	215
Aberdeen	21.7	25
Alaska	26.0	28
Albuquerque	12.1	10
Bemidji	6.4	6
Billings	18.2	12
California	17.1	11
Nashville	7.0	3
Navajo	15.1	36
Oklahoma	14.3	41
Phoenix	8.6	11
Portland	26.6	23
Tucson	42.0	9

¹ Number of new cases per 100,000 service population. Rates are based on a small number of new cases and should be interpreted with caution.

SOURCE: Centers for Disease Control and Prevention (data by State and County)

Glossary of ICD-9 Codes

List of 72 Selected Causes of Death (1979-Present)

Cause of death	ICD-9 Codes
Shigellosis and amebiasis	004, 006
Certain other intestinal infections	007-009
Tuberculosis	010-018
Tuberculosis of respiratory system	010-012
Other tuberculosis	013-018
Whooping cough	033
Streptococcal sore throat, scarlatina, and erysipelas	034-035
Meningococcal infection	036
Septicemia	038
Acute poliomyelitis	045
Measles	055
Viral hepatitis	070
Syphilis	090-097
All other infectious and parasitic diseases	001-003, 005, 020-032, 037, 039-041, 042-044, 046-054, 056-066, 071-088, 098-139
Malignant neoplasms, including neoplasms of lymphatic and hematopoietic tissues	140-208
Malignant neoplasms of lip, oral cavity, and pharynx	140-149
Malignant neoplasms of digestive organs and peritoneum	150-159
Malignant neoplasms of respiratory and intrathoracic organs	160-165
Malignant neoplasm of breast	174-175
Malignant neoplasms of genital organs	179-187
Malignant neoplasms of urinary organs	188-189
Malignant neoplasms of all other and unspecified sites	170-173, 190-199
Leukemia	204-208
Other malignant neoplasms of lymphatic and hematopoietic tissues	200-203
Benign neoplasms, carcinoma in situ, and neoplasms of uncertain behavior and of unspecified nature	210-239
Diabetes mellitus	250
Nutritional deficiencies	260-269
Anemias	280-285
Meningitis	320-322
Major cardiovascular diseases	390-448
Diseases of heart	390-398, 402, 404-429
Rheumatic fever and rheumatic heart disease	390-398
Hypertensive heart disease	402
Hypertensive heart and renal disease	404
Ischemic heart disease	410-414
Acute myocardial infarction	410
Other acute and subacute forms of ischemic heart disease	411
Angina pectoris	413
Old myocardial infarction and other forms of chronic ischemic heart disease	412, 414

List of 72 Selected Causes of Death (1979-Present)

Cause of death	ICD-9 Codes
Other diseases of endocardium	424
All other forms of heart disease	415-423, 425-429
Hypertension with or without renal disease	401, 403
Cerebrovascular diseases	430-438
Intracerebral and other intracranial hemorrhage	431-432
Cerebral thrombosis and unspecified occlusion of cerebral arteries	434.0, 434.9
Cerebral embolism	434.1
All other and late effects of cerebrovascular diseases	430, 433, 435-438
Atherosclerosis	440
Other diseases of arteries, arterioles, and capillaries	441-448
Acute bronchitis and bronchiolitis	466
Pneumonia and influenza	480-487
Pneumonia	480-486
Influenza	487
Chronic obstructive pulmonary diseases and allied conditions	490-496
Bronchitis, chronic and unspecified	490-491
Emphysema	492
Asthma	493
Other chronic obstructive pulmonary diseases and allied conditions	494-496
Ulcer of stomach and duodenum	531-533
Appendicitis	540-543
Hernia of abdominal cavity and intestinal obstruction without mention of hernia	550-553, 560
Chronic liver disease and cirrhosis	571
Cholelithiasis and other disorders of gallbladder	574-575
Nephritis, nephrotic syndrome, and nephrosis	580-589
Acute glomerulonephritis and nephrotic syndrome	580-581
Chronic glomerulonephritis, nephritis and nephropathy, not specified as acute or chronic, and renal sclerosis, unspecified	582-583, 587
Renal failure, disorders resulting from impaired renal function, and small kidney of unknown cause	584-586, 588-589
Infections of kidney	590
Hyperplasia of prostate	600
Complications of pregnancy, childbirth, and the puerperium	630-676
Pregnancy with abortive outcome	630-638
Other complications of pregnancy, childbirth, and the puerperium	640-676
Congenital anomalies	740-759
Certain conditions originating in the perinatal period	760-779
Birth trauma, intrauterine hypoxia, birth asphyxia, and respiratory distress syndrome	767-769
Other conditions originating in the perinatal period	760-766, 770-779
Symptoms, signs, and ill-defined conditions	780-799
All other diseases	Residual
Accidents and adverse effects	E800-E949
Motor vehicle accidents	E810-E825
All other accidents and adverse effects	E800-E807, E826-E949
Suicide	E950-E959
Homicide and legal intervention	E960-E978
All other external causes	E980-E999

List of 61 Selected Causes of Infant Death (1979-Present)

Cause of death	ICD-9 Codes
Certain intestinal infections	008-009
Whooping cough	033
Meningococcal infection	036
Septicemia	038
Viral diseases	045-079
Congenital syphilis	090
Remainder of infectious and parasitic diseases	001-007, 010-032, 034-035, 037, 039-041, 042-044, 080-088, 091-139
Malignant neoplasms, including neoplasms of lymphatic and hematopoietic tissues	140-208
Benign neoplasms, carcinoma in situ, and neoplasms of uncertain behavior and of unspecified nature	210-239
Diseases of thymus gland	254
Cystic fibrosis	277.0
Diseases of blood and blood-forming organs	280-289
Meningitis	320-322
Other diseases of nervous system and sense organs	323-389
Acute upper respiratory infections	460-465
Bronchitis and bronchiolitis	466, 490-491
Pneumonia and influenza	480-487
Pneumonia	480-486
Influenza	487
Remainder of diseases of respiratory system	470-478, 492-519
Hernia of abdominal cavity and intestinal obstruction without mention of hernia	550-553, 560
Gastritis, duodenitis, and noninfective enteritis and colitis	535, 555-558
Remainder of diseases of digestive system	520-534, 536-543, 562-579
Congenital anomalies	740-759
Anencephalus and similar anomalies	740
Spina bifida	741
Congenital hydrocephalus	742.3
Other congenital anomalies of central nervous system and eye	742.0-742.2, 742.4-742.9, 743
Congenital anomalies of heart	745-746
Other congenital anomalies of circulatory system	747
Congenital anomalies of respiratory system	748
Congenital anomalies of digestive system	749-751
Congenital anomalies of genitourinary system	752-753
Congenital anomalies of musculoskeletal system	754-756
Down's syndrome	758.0
Other chromosomal anomalies	758.1-758.9
All other and unspecified congenital anomalies	744, 757, 759
Certain conditions originating in the perinatal period	760-779
Newborn affected by maternal conditions that may be unrelated to present pregnancy	760
Newborn affected by maternal complications of pregnancy	761
Newborn affected by complications of placenta, cord, and membranes	762
Newborn affected by other complications of labor and delivery	763
Slow fetal growth and fetal malnutrition	764
Disorders relating to short gestation and unspecified low birthweight	765
Disorders relating to long gestation and high birthweight	766

List of 61 Selected Causes of Infant Death (1979-Present)

Cause of death	ICD-9 Codes
Birth trauma	767
Intrauterine hypoxia and birth asphyxia	768
Fetal distress in liveborn infant	768.2-768.4
Birth asphyxia	768.5-768.9
Respiratory distress syndrome	769
Other respiratory conditions of newborn	770
Infections specific to the perinatal period	771
Neonatal hemorrhage	772
Hemolytic disease of newborn, due to isoimmunization, and other perinatal jaundice	773-774
Syndrome of "infant of a diabetic mother" and neonatal diabetes mellitus	775.0-775.1
Hemorrhagic disease of newborn	776.0
All other and ill-defined conditions originating in the perinatal period	775.2-775.9, 776.1-779
Symptoms, signs, and ill-defined conditions	780-799
Sudden infant death syndrome	798.0
Symptoms, signs, and all other ill-defined conditions	780-797, 798.1-799
Accidents and adverse effects	E800-E949
Inhalation and ingestion of food or other object causing obstruction of respiratory tract or suffocation	E911-E912
Accidental mechanical suffocation	E913
Other accidental causes and adverse effects	E800-E910, E914-E949
Homicide	E960-E969
Child battering and other maltreatment	E967
Other homicide.	E960-E966, E968-E969
All other causes	Residual

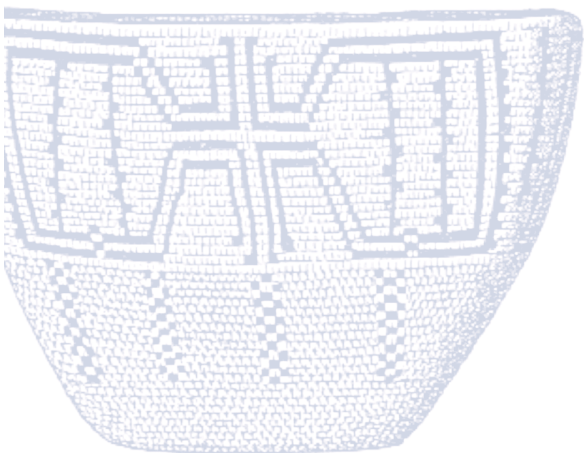
Additional Causes of Death and Their Corresponding ICD-9 Codes That Are Found in This Publication

(These categories are not included as part of the 72 cause of death or 61 cause of infant death lists. They are independent of these two lists but are valid cause of death codes to use for the causes indicated.)

Cause of death	ICD-9 Codes
Alcoholism deaths	291, 303, 305.0, 357.5, 425.5, 535.3, 571.0-571.3, 790.3, E860
Breast cancer (females)	174
Cervical cancer	180
Colon-rectal cancer	153.0-154.3, 154.8, 159.0
Drug-related deaths	292, 304, 305.2-305.9, E850-E858, E950-E950.5, E962.0, E980.0-E980.5
Gastroenteric deaths	004, 006-009, 535, 555-556, 558, 562
Human immunodeficiency virus (HIV) infection	042-044
Injury by firearms	E922, E955.0-E955.4, E965.0-E965.4, E970, E985.0-E985.4
Injury and poisoning	E800-E807, E810-E825, E826-E949, E950-E959, E960-E978, E980-E989, E990-E999
Other injuries	E980-E989, E990-E999
Lung cancer	162.2-162.9
Maternal deaths	630-676
Prostate cancer	185

List of ICD-9-CM Codes Used in Patient Care Charts and Tables

Cause of death	ICD-9 Codes
Infectious and parasitic diseases	001-139
Neoplasms	140-239
Endocrine, nutritional, and metabolic diseases and immunity disorders	240-279
Diseases of the blood and blood-forming organs	280-289
Mental disorders	290-319
Diseases of the nervous system and sense organs	320-389
Diseases of the circulatory system	390-459
Diseases of the respiratory system	460-519
Diseases of the digestive system	520-579
Diseases of the genitourinary system	580-629
Complications of pregnancy, childbirth, and the puerperium	630-676
Diseases of the skin and subcutaneous tissue	680-709
Diseases of the musculoskeletal system and connective tissue	710-739
Congenital anomalies	740-759
Certain conditions originating in the perinatal period	760-779
Symptoms, signs, and ill-defined conditions	780-799
Injury and poisoning	800-999
Supplementary classification (classification of factors influencing health status and contact with health service)	E01-E99



Index to Chart and Tables

(Numbers refer to chart and table numbers)

	Chart	Table		Chart	Table
A					
Accidents	4.18	4.18	Infant mortality, leading causes	3.14-3.27	
Acquired Immune Deficiency Syndrome	4.36	4.36	Injury and poisoning	4.17-4.22	4.17-4.22
Alcoholism	4.23	4.23	Inpatient admissions	5.1-5.2	5.1
Ambulatory medical visits	5.17	5.17	Inpatient days	5.3	5.3
Ambulatory medical visits, leading causes	5.18-5.30		Inpatient, leading causes	5.4-5.16	
Area Offices	1.1		L		
B					
Births	3.1-3.9	3.1-3.9	Life expectancy at birth	4.37-4.39	
C					
Cancer, all sites	4.30	4.30	M		
Cancer, breast	4.32	4.32	Malignant neoplasms, all sites	4.30	4.30
Cancer, cervical	4.33	4.33	Malignant neoplasms, breast	4.32	4.32
Cancer, colon-rectal	4.34	4.34	Malignant neoplasms, cervical	4.33	4.33
Cancer, lung	4.31	4.31	Malignant neoplasms, colon-rectal	4.34	4.34
Cancer, prostate	4.35	4.35	Malignant neoplasms, lung	4.31	4.31
Cerebrovascular diseases	4.29	4.29	Malignant neoplasms, prostate	4.35	4.35
D					
Dental	5.33	5.33	Map of Area Offices	1.1	
Diabetes	4.24	4.24	Maternal deaths	3.10	
E					
Education	2.5, 2.6		Mortality rates, all causes	4.1	4.1
F					
Facilities	1.2-1.14		Mortality rates, specific causes	see cause name	
Family planning visits	5.31	5.31	Mortality, leading causes	4.3-4.16	
Firearm injuries	4.21	4.21	N		
G					
Gastrointestinal diseases	4.27	4.27	Neonatal mortality	3.12	3.12
H					
Homicide	4.20	4.20	O		
Heart diseases	4.28	4.28	Outpatient visits	5.17	5.17
Hospital admissions	5.1-5.2	5.1	Outpatient visits, leading causes	5.18-5.30	
Hospital days	5.3	5.3	P		
Hospitalization, leading causes	5.4-5.16		Pneumonia and influenza	4.25	4.25
Human immunodeficiency virus	4.36	4.36	Population, user	2.1-2.4	
I					
Immunizations	5.32	5.32	Postneonatal mortality	3.13	3.13
Income	2.9, 2.10		Poverty level	2.10	
Infant mortality, rates	3.11-3.13, 3.28	3.11-3.13, 3.28	Prenatal care	3.4	3.4
J					
K					
L					
M					
N					
O					
P					
Q					
R					
S					
T					
U					
V					
W					
X					
Y					
Years of Potential Life	4.2	4.2	Z		