

# John Krebs Wilderness









September 16, 2008

Map 102/60014b  
Sheet 2 of 2

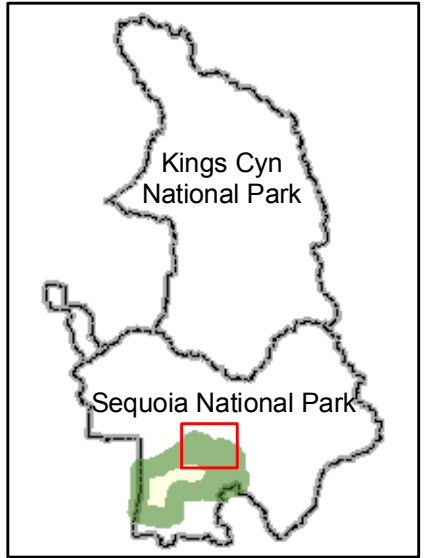
## Sequoia - Kings Canyon Wilderness

## John Krebs Wilderness

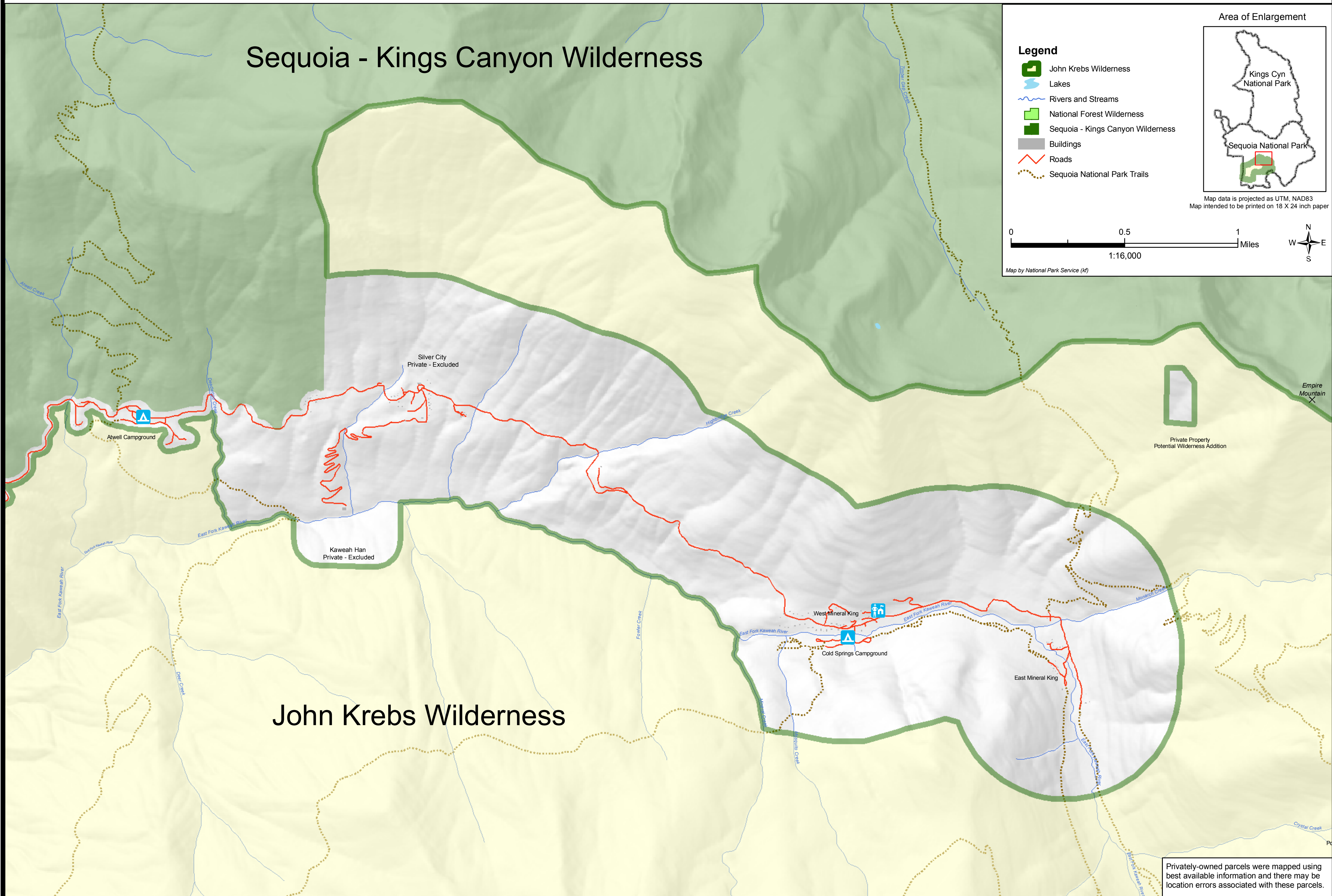
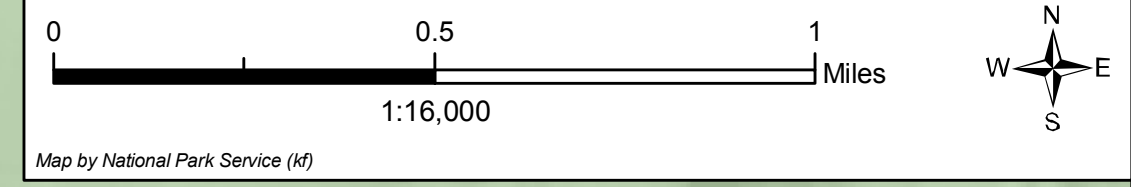
### Legend

-  John Krebs Wilderness
-  Lakes
-  Rivers and Streams
-  National Forest Wilderness
-  Sequoia - Kings Canyon Wilderness
-  Buildings
-  Roads
-  Sequoia National Park Trails

### Area of Enlargement



Map data is projected as UTM, NAD83  
Map intended to be printed on 18 X 24 inch paper



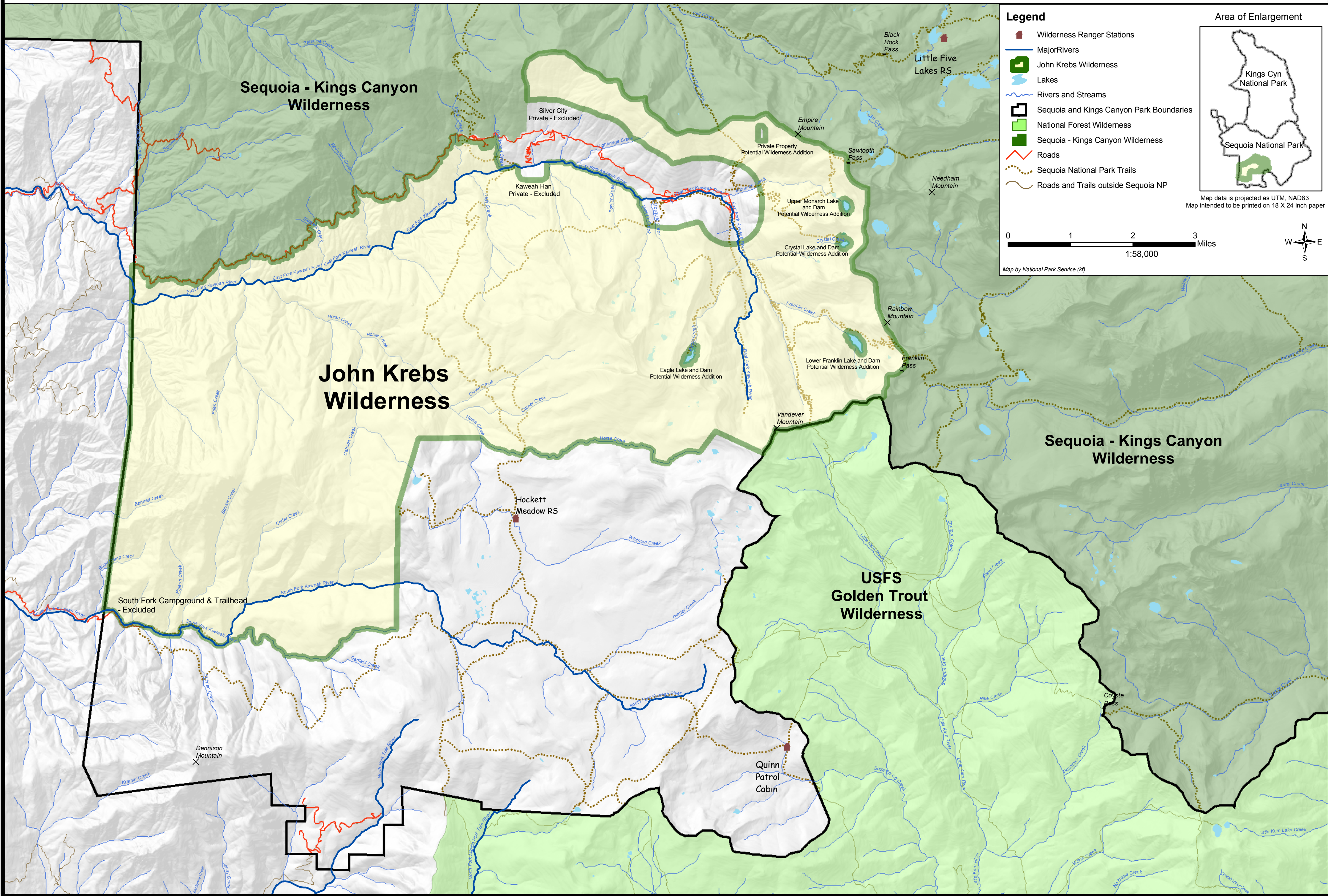
Privately-owned parcels were mapped using best available information and there may be location errors associated with these parcels.



# John Krebs Wilderness

September 16, 2008

Map 102/60014b  
Sheet 1 of 2



**Legend**

- Wilderness Ranger Stations
- Major Rivers
- John Krebs Wilderness
- Lakes
- Rivers and Streams
- Sequoia and Kings Canyon Park Boundaries
- National Forest Wilderness
- Sequoia - Kings Canyon Wilderness
- Roads
- Sequoia National Park Trails
- Roads and Trails outside Sequoia NP

**Area of Enlargement**

Map data is projected as UTM, NAD83  
Map intended to be printed on 18 X 24 inch paper

0 1 2 3 Miles  
1:58,000

Map by National Park Service (K)



# Sequoia - Kings Canyon Wilderness Addition

March 10, 2008

Map 102/60015a

