

**National Health Interview Survey/  
National Immunization Provider Record  
Check Study**

**User=s Guide for the  
1998 Public-Use Data File**

*Prepared for*  
U.S. Department of Health and Human Services  
Centers for Disease Control and Prevention  
National Center for Health Statistics  
and  
National Immunization Program

*Prepared by*  
Abt Associates Inc.

**October 2002**

# Table of Contents

|  |    |
|--|----|
| Appendices .....   | 3  |
| Glossary of Commonly Used Terms and Abbreviations.....                             | 4  |
| Chapter 1. Introduction .....  | 5  |
| Chapter 2. Sample and Data Collection .....  | 8  |
| 2.1 Summary of 1998 Sample .....   | 8  |
| 2.2 NHIS Immunization Supplement .....   | 10 |
| 2.3 National Immunization Provider Record Check Study .....                        | 10 |
| 2.3.1 Original Data Collection .....   | 10 |
| 2.3.2 Nonresponse Follow-Up Survey .....   | 12 |
| 2.3.3 Matching and Reconciliation.....   | 13 |
| 2.4 Data Processing .....  | 17 |
| 2.5 Informed Consent, Security, and Confidentiality of Information .....           | 18 |
| Chapter 3. Estimation of Vaccination Coverage .....                                | 19 |
| 3.1 NHIS Weighting Information .....   | 19 |
| 3.2 Provider-Adjusted Estimates .....  | 19 |
| 3.3 Best Values .....  | 19 |
| 3.4 Best Value Weights .....   | 20 |
| 3.5 Imputed Best Values .....  | 21 |
| 3.6 Children Aged 12-18 months .....   | 21 |
| Chapter 4. Calculating Estimates of Vaccination Coverage and Standard Errors ..... | 22 |
| 4.1 Provider-Adjusted Estimates of Vaccination Coverage .....                      | 22 |
| 4.2 Best Value Estimates and Using Imputed Best Values .....                       | 25 |
| 4.3 Calculating Standard Errors .....  | 25 |
| 4.3.1 Standard Errors of NHIS Estimates .....                                      | 25 |
| 4.3.2 Standard Errors of Best Value Estimates .....                                | 25 |
| 4.3.3 Standard Errors of Estimates Based on Imputed Best Values .....              | 26 |
| Chapter 5. Public -Use Data File .....   | 27 |
| 5.1 File Description.....  | 27 |
| 5.2 Data Cleaning .....  | 27 |
| 5.3 Missing Value Codes .....  | 27 |
| 5.4 Variable Naming Conventions .....  | 28 |
| 5.5 Changes from 1997 NHIS/NIPRCS Data File .....                                  | 28 |
| 5.5.1 New Variables .....  | 28 |
| 5.5.2 Variables with Different Response Categories .....                           | 29 |
| 5.6 Explanatory Notes for Specific Variables .....                                 | 30 |
| 5.7 Flags .....  | 32 |
| 5.8 Data Alerts .....  | 32 |
| 5.9 Code Book.....   | 33 |
| 5.10 Guidelines for Citation of Data.....  | 33 |
| References .....   | 34 |

## Appendices

|            |   |
|------------|---|
| Appendix A | Estimates of Vaccination Coverage Rates among Children Aged 19-35 Months  |
| Appendix B | 1998 NHIS/NIPRCS Immunization History Questionnaire   |
| Appendix C | Estimates of Vaccination Coverage among Children Aged 12-18 Months  |
| Appendix D | Weighting Classes and Calculations for Provider-Adjusted Estimates  |
| Appendix E | Example of a SAS Program That Calls SUDAAN for Calculating Standard Errors  |
| Appendix F | Unweighted Distribution of Children Aged 12-35 Months in the 1998 NHIS/NIPRCS by Selected Demographic Characteristics |
| Appendix G | Weighted Distribution of Children Aged 12-35 Months in the 1998 NHIS/NIPRCS by Selected Demographic Characteristics   |
| Appendix H | Descriptive Statistics for Two Sampling Weight Variables Included in the 1998 NHIS/NIPRCS Data File                   |

## Glossary of Commonly Used Terms and Abbreviations

|           |  |
|-----------|--|
| 4:3:1     | Child has received 4 or more DTP, 3 or more polio, and 1 or more MCV vaccinations.                                       |
| 4:3:1:3   | Child has received 4 or more DTP, 3 or more polio, 1 or more MCV, and 3 or more Hib vaccinations.                        |
| 4:3:1:3:3 | Child has received 4 or more DTP, 3 or more polio, 1 or more MCV, 3 or more Hib, and 3 or more hepatitis B vaccinations. |
| CAPI      | Computer-assisted personal interviewing  |
| CDC       | Centers for Disease Control and Prevention   |
| DTaP      | Diphtheria, tetanus, acellular pertussis   |
| DTP       | Diphtheria, tetanus, pertussis   |
| Hep B     | Hepatitis B  |
| Hib       | <i>Haemophilus influenzae</i> type b   |
| IHQ       | Immunization History Questionnaire   |
| IPV       | Inactivated poliovirus vaccine   |
| MCV       | Measles-containing vaccine   |
| MMR       | Measles, mumps, rubella  |
| NCHS      | National Center for Health Statistics  |
| NHIS      | National Health Interview Survey   |
| NHIS/IM   | National Health Interview Survey Immunization Supplement   |
| NIP       | National Immunization Program  |
| NIPRCS    | National Immunization Provider Record Check Study  |
| NRFUS     | Nonresponse Follow-Up Survey   |
| OPV       | Oral poliovirus vaccine  |

# Chapter 1. Introduction

Since 1991, national estimates of vaccination coverage have been available through the National Health Interview Survey - Immunization Supplement (NHIS/IM), sponsored by the National Center for Health Statistics (NCHS) of the Centers for Disease Control and Prevention (CDC) and conducted by the Census Bureau. The NHIS questionnaire includes a core module that collects demographic information on all household members, a module of health questions about one sampled adult, and a module of health questions about one sampled child.<sup>1</sup> At the end of the core interview, the NHIS/IM is administered for the sampled child and all other children in the household between the ages of 12 and 35 months. The NHIS/IM asks for a vaccination history of the child. Respondents can either report vaccination dates from a written shot record, if one is available for the child, or they can report the total number of doses for each vaccine from memory recall if no shot record is available.

Reliance on household reports of childhood immunizations has two potential inaccuracies that influence the estimation of vaccination coverage (Zell et al. 1996). First, a large proportion (61%) of respondents rely only on memory recall to report their child's immunization history, which is subject to the potential bias inherent in recall data. In 1998, only 39% of respondents used a shot card to report all or some of their child's vaccinations. Second, even when shot records are used, dates of vaccinations may be missing if the respondent did not have the shot record at the time of the immunization or the original shot record has been lost. Thus, the validity of the vaccination coverage estimates produced from the NHIS has been a major concern. Therefore, to determine the accuracy of the household responses in the NHIS, the NCHS and the National Immunization Program (NIP) of the CDC implemented the National Immunization Provider Record Check Study (NHIS/NIPRCS) in 1994. Its purpose is to evaluate the accuracy of household reports of children's immunization histories by comparing the household reports with the reports from the children's immunization providers, and to produce national estimates of vaccination coverage using both the household and provider reports (Ezzati-Rice et al. 1996; Peak and Cadell 1996). The estimates of vaccination coverage from the NHIS/NIPRCS are also used to adjust for non-telephone coverage bias in the National Immunization Survey (NIS), a telephone survey of households with children aged 19-35 months.

The NHIS/NIPRCS produces estimates of coverage for nine vaccines and series of vaccines. Table 1.1 lists these vaccines and the number of doses required to be up-to-date for each vaccine and series.

---

<sup>1</sup> For details on the NHIS sample design and data collection procedures, see the documentation on the NHIS Web site: <http://www.cdc.gov/nchs/nhis.htm>

| <b>Table 1.1: Vaccines and Combinations of Vaccines Monitored in the 1998 NHIS/NIPRCS</b> |   |
|---|---|
| DTP   | 4 or more doses of diphtheria-tetanus-pertussis vaccine   |
| DTP3  | 3 or more doses of diphtheria-tetanus-pertussis vaccine   |
| Polio   | 3 or more doses of polio vaccine  |
| MCV   | 1 or more doses of measles-containing vaccine   |
| Hib   | 3 or more doses of <i>Haemophilus influenzae</i> type b vaccine   |
| Hep B   | 3 or more doses of hepatitis B vaccine  |
| 4:3:1   | 4 or more doses of DTP, 3 or more doses of polio, and 1 or more doses of measles-containing vaccine   |
| 4:3:1:3   | 4 or more doses of DTP, 3 or more doses of polio, 1 or more doses of measles-containing vaccine, and 3 or more doses of Hib vaccine                                 |
| 4:3:1:3:3   | 4 or more doses of DTP, 3 or more doses of polio, 1 or more doses of measles-containing vaccine, 3 or more doses of Hib, and 3 or more doses of hepatitis B vaccine |

## General Information about the 1998 NHIS/NIPRCS

The NHIS/NIPRCS begins with households that completed an NHIS/IM for a child or children aged 12-35 months. As part of completing the Immunization Supplement, the parent or legal guardian is asked to sign a permission form allowing the survey staff to contact the child's medical providers. Only households that signed permission forms are eligible for the NHIS/NIPRCS. The permission form has space for the names and addresses of up to three providers. It also contains identifying information and the signature of the parent or guardian. Permission forms are valid for one year from the date of the interview. The permission forms are sent to the NHIS/NIPRCS contractor for data collection, Abt Associates Inc.

All providers for whom households gave adequate locating information are mailed an Immunization History Questionnaire (IHQ). (See Appendix B for a copy of the 1998 IHQ.) A label on the IHQ gives the child's name, date of birth, and gender, so the provider can locate the child's records. The form includes a grid for the provider to record the date of each vaccination the child has received. The provider is asked to enter all known vaccinations, whether they were given at that practice or elsewhere. In addition to the child's immunization history, the form collects characteristics of the provider's practice, such as whether the practice is a public or private facility and the types of care provided.

The returned IHQs are reviewed for legibility and consistency, and edited as appropriate before being sent to a vendor for data entry. The data from the IHQ are entered in a database, with 100% double-keying, and the raw data file is returned to the contractor for cleaning and further editing.

In 1998, a Nonresponse Follow-Up Survey (NRFUS) was conducted with households who were not eligible for the original NIPRCS data collection, because (1) the permission form was refused or not valid, (2) there was inadequate information to contact providers, or (3) the household respondent reported the child had not received any vaccines or was unsure if the child had received any vaccinations. Eligible households were recontacted and asked for permission to request the eligible child's immunization records from his or her providers. If the household consented, IHQs were sent to the providers as in the original study.

The immunization information reported by the households and providers is compared for each child. If discrepancies are discovered, the case is eligible for reconciliation. That process contacts the providers, the household, or both to resolve the inconsistencies between the reports. The household is asked to verify some information and whether any additional providers should be contacted, and the providers are asked about specific vaccination dates or whether another provider could have immunization records for the child. If discrepancies remain in the data after these contacts, either the provider information or a combination of the household and provider information is considered to be the most accurate or the "best values" for immunization information.

The NHIS interviews were conducted between January and December of 1998. Data collection for the 1998 NHIS/NIPRCS began in May 1999 and continued through October 2000. The NRFUS was conducted between February and December 2000. Reconciliation for both the original data and the NRFUS data was conducted between June and August 2001.

The 1998 NHIS/NIPRCS public-use data file (PUF) includes data for 2,966 children with completed NHIS/IM interviews. The variables included in the file come from the 1998 NHIS and the 1998 NHIS/NIPRCS IHQ. The NHIS variables were selected from the following NHIS data files: Household, Family, Person, Sample Adult, Sample Child, and Immunization Supplement.

For further information on the NHIS data products, please contact the NCHS Data Dissemination Branch:

Phone: 301-458-4901

FAX: 301-458-4035

E-mail: [nhislist@cdc.gov](mailto:nhislist@cdc.gov)

Internet: <http://www.cdc.gov/nchs/nhis.htm>

## Chapter 2. Sample and Data Collection

### 2.1 Summary of 1998 Sample

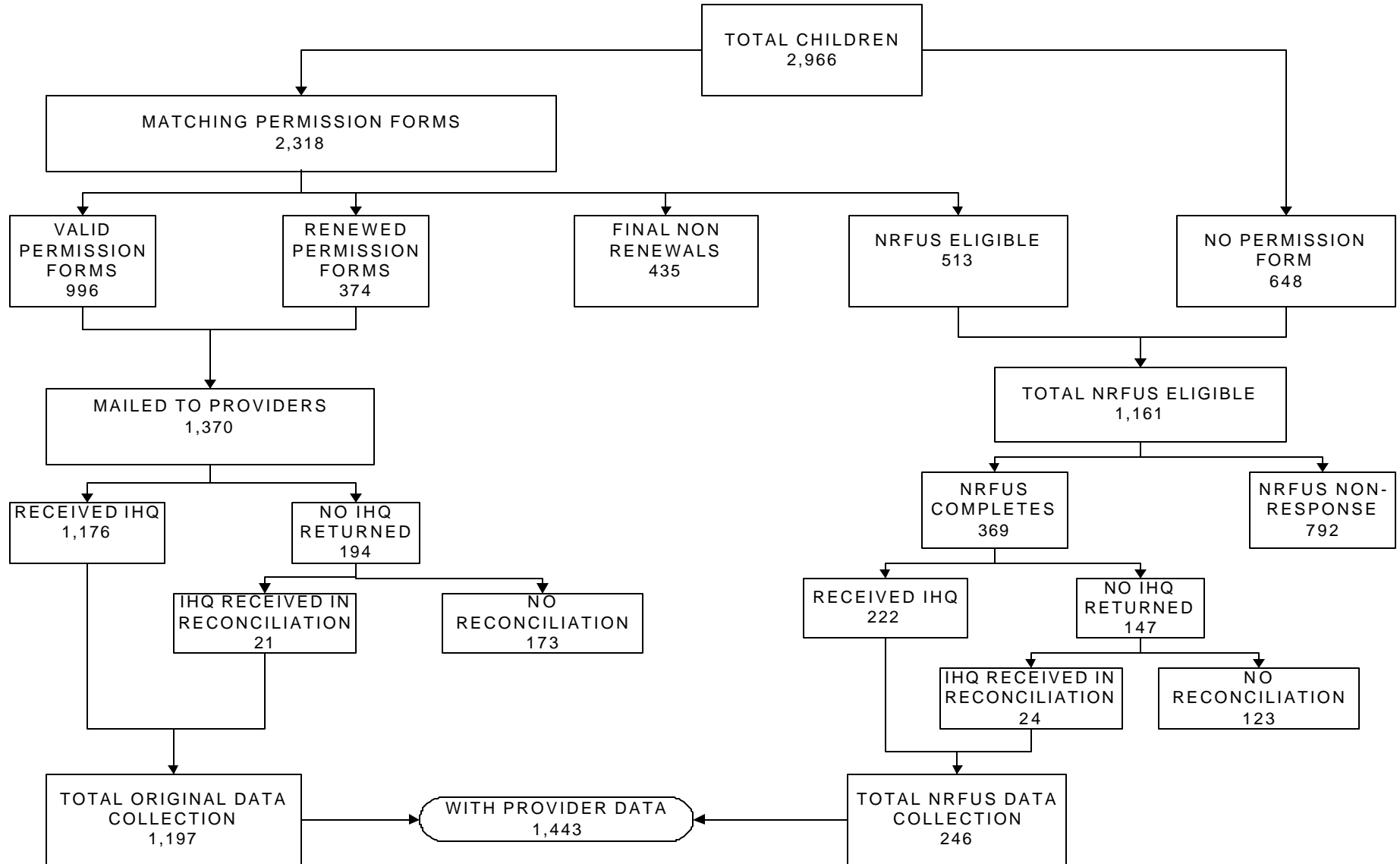
The 1998 NHIS/NIPRCS sample contains 2,966 children aged 12-35 months with a completed NHIS/IM. Of these children, 894 (30.1%) were aged 12-18 months at the time of the NHIS interview and 2,072 (69.9%) were 19-35 months. IHQs were mailed to the providers for the 1,370 children (46%) who had valid original or renewed permission forms. Providers returned IHQs with vaccination data for 1,197 (87%) of the children. Provider data were collected in the NRFUS for an additional 246 children. In total, 1,443 (49%) of the children with a completed NHIS/IM had provider data. (See Figure 2.1.)

Of the 2,966 children, best values for vaccination dates could be determined for 1,691 (57.0%). The number of children with best values for vaccination dates is greater than the number of children with provider vaccination data. Some children without provider vaccination data have best vaccination values because they are 4:3:1:3 up-to-date from a household shot card. For the children without best values, up-to-date status was imputed. (The imputation procedures are described in Section 3.6.) Table 2.1 shows the results of the provider data collection and best value construction for the two age groups. See Appendices F and G for tables summarizing the distribution of the sample by various demographic characteristics.

| <b>Table 2.1: Distribution of Children with Provider and Best Value Data by Age Group, 1998 NHIS/NIPRCS</b> |                     |                               |                               |       |
|---|---------------------|-------------------------------|-------------------------------|-------|
|   |                     | Children aged<br>12-18 months | Children aged<br>19-35 months | Total |
| Total Number of Children  |                     | 894                           | 2,072                         | 2,966 |
| Number of children<br>with requests mailed<br>to providers  | Original            | n/a                           | n/a                           | 1,370 |
|   | Original +<br>NRFUS | n/a                           | n/a                           | 1,739 |
| Number of children<br>with provider data  | Original            | 347                           | 850                           | 1,197 |
|   | Original +<br>NRFUS | 418                           | 1,025                         | 1,443 |
| Number of children<br>with best values  | Original            | 439                           | 1,044                         | 1,483 |
|   | Original +<br>NRFUS | 497                           | 1,194                         | 1,691 |
| Number of children with imputed best values   |                     | 397                           | 878                           | 1,275 |



FIGURE 2.1: 1998 NHIS/NIPRCS SAMPLE



## **2.2 NHIS Immunization Supplement**

The U.S. Bureau of the Census collects data for the NHIS under a contract with the NCHS. Census Bureau interviewers conduct personal, in-home interviews with individuals in sampled households. For the Family Core component of the NHIS Basic Module, all members of an eligible household who are at home at the time of the interview and 17 years of age and over are asked to participate and to respond for themselves. For children and those adults not at home during the interview, information is provided by a knowledgeable adult family member (18 years of age or over) residing in the household. For the Sample Adult questionnaire, one adult per family is randomly selected; this individual responds for him/herself to the questions in this interview. Information for the Sample Child questionnaire is obtained from a knowledgeable adult in the household.

The 1998 NHIS interview was conducted using a computer-assisted personal interviewing (CAPI) version of the NHIS questionnaire. Interviewers administered the instrument using laptop computers, entering responses directly into the computer during the household interview. This computerized mode of administration offers distinct advantages in timeliness of the data and improved data quality. The data for the NHIS/IM are collected for children selected for the Sample Child questionnaire, and all other children in the household between the ages of 12 and 35 months.

## **2.3 National Immunization Provider Record Check Study**

The data in the provider record check study are collected in two phases: original data collection and reconciliation. In the original data collection, immunization records are collected from the providers. In reconciliation, the data collected from the providers are compared and reconciled with the data collected from the household. During reconciliation, some new IHQs are received for children for whom provider data were not obtained in the original data collection.

### **2.3.1 Original Data Collection**

Once the NHIS/IM is completed, the names and addresses of immunization providers identified by household respondents are written on permission forms. The NHIS CAPI questionnaire captures whether a permission form was completed (or ~~generated~~), and whether the permission form was signed by the child's parent or legal guardian. An electronic file of eligible household ID numbers with child and household data is forwarded to the NHIS/NIPRCS contractor, Abt Associates Inc., where it is entered into a case management and tracking system. The Regional Offices of the Census Bureau send the signed permission forms to the contractor.

The first step in data collection matches the permission forms with the file of eligible households. The file is loaded into a case management system. After the forms have been matched, provider names, addresses and telephone numbers are entered from the hard-copy permission forms. After data entry and editing are completed, a scannable label with a bar code is printed for each case ID and attached to the appropriate permission form in order to facilitate tracking and reporting.

Once the provider address information has been entered, the next step is to check its completeness. (Complete addresses are necessary to mail questionnaires to immunization providers.) When the household did not supply a complete address for a provider, locating clerks use multiple methods to find additional information, including searching a database of providers from the NIS and calling Directory Assistance.

After the provider addresses have been reviewed and updated, the initial requests are mailed. The initial mailing packet includes the following documents:

- \$ A cover letter from the Director of the NCHS describing the purpose of the NHIS/NIPRCS, the importance of provider participation, and how the parent's consent was obtained. Separate letters are used for cases with a parent's signature and cases with an interviewer's signature verifying a parent's verbal consent during a telephone contact.
- \$ An excerpt from the permission form signed by the parent or guardian, or signed by the interviewer for cases with verbal consent.
- \$ An Immunization History Questionnaire labeled with sufficient information to identify the child whose immunization records are requested.
- \$ An excerpt from an article in the *Morbidity and Mortality Weekly Report (MMWR)* containing information on national vaccination rates.
- \$ A pre-addressed, postage-paid return envelope.

Providers are asked to complete the IHQ, or to attach a copy of the child's immunization records. Providers are also given the option to return the forms by mail, or to a toll-free fax number. Reminder/thank you postcards are mailed two weeks after the initial mailing. The postcards contain the CDC logo to identify study sponsorship, a "thank-you" to those who have already returned the original IHQ, and a brief message about the need for and importance of collecting these data to measure vaccination coverage among children in the U.S.

The IHQ used in 1998 was very similar to the one used in 1997. Only two small changes were made between the years. A check box was added to the DTP-Hib row in the shot grid so the provider could indicate if the vaccination administered was a DTP-Hib or DtaP-Hib. The response categories to Question 5 on the second page of the IHQ were updated. (See Appendix B.)

Reminder packets containing a second copy of the IHQ are mailed three weeks after the postcard mailing (five weeks from the initial mailing) to providers who have not yet returned the IHQ from the first mailing. A one-page letter reiterates the importance of provider participation and requests return of the completed questionnaire. Seven weeks after the initial mailing, provider offices that still have not responded to the initial request or subsequent mailed reminders receive

a telephone prompt from an experienced interviewer trained to elicit cooperation and record medical information. The prompting call is a final attempt to complete and return the provider questionnaires. Generally, these prompting calls serve to remind providers to return the completed questionnaires, and they provide an opportunity to mail or fax new materials to those providers who request them. In some cases, the questionnaire is completed with the interviewer over the telephone.

The IHQ is then manually edited. If a provider returned a copy of the child's medical records, the information is transcribed onto a new IHQ. Every IHQ is reviewed by a quality control clerk. The cases are then sent to a vendor for data entry. The forms are keyed twice for verification. The data from the IHQs are then merged with the NHIS data to create the initial dataset.

### **2.3.2 Nonresponse Follow-Up Survey**

In 1998, a NRFUS was conducted for the NHIS/NIPRCS. The NRFUS followed up with households with children who completed the NHIS immunization supplement but:

- did not complete a permission form to contact the providers;
- the provider contact information was inadequate; or
- reported no shots, or were uncertain of the child's vaccination status.

The first step in the NRFUS was to send households for which an address was available a packet that included a cover letter, a provider information sheet to list provider names and addresses, and a form granting permission to contact providers. Two weeks after the packet was mailed, the households were contacted by telephone. The telephone interviewer asked the household respondent for provider information and permission to contact those providers.

If the household gave permission to contact a provider, an Immunization History Questionnaire was sent to the provider following the same protocol as the original provider data collection described in Section 2.3.1 above.

A total of 1,161 were cases identified as eligible for NRFUS. Of these cases, provider data were obtained for 222 cases.

The results for all the cases in the initial data collection for the 1998 NRFUS are listed in Table 2.2.

| <b>Table 2.2: 1998 NRFUS Results</b>                                   |              |
|--|--------------|
| Inadequate information to field case                                   | 257          |
| Refusal  | 120          |
| Unlocatable  | 375          |
| Other final non-interview (e.g., other language, child in foster care) | 40           |
| Permission renewed - provider did not respond                          | 104          |
| Provider responded - no immunization data                              | 43           |
| Provider responded with immunization data*                             | 222          |
| <b>TOTAL CASES</b>   | <b>1,161</b> |

\*Of these 222 cases, 154 were in the 19-35 month age range.

### 2.3.3 Matching and Reconciliation

In matching and reconciliation, every case with provider data is reviewed and compared with the corresponding data from the NHIS/IM interview. For cases in which the household and provider data are discrepant, or where provider data are missing, either the household, the provider, or both are recontacted by telephone or mail to clarify the discrepant data.

The first step in the matching process is to classify the cases into ten adjudication groups. First, the cases are separated by whether a shot card was used in the initial household interview. Cases with shot cards are further divided into five groups, depending on whether there is a discrepancy between the dates and/or doses of the household and provider reports. Cases in which the household reported only the number of doses of each vaccine from recall are divided into four groups. Finally, cases in which multiple providers responded for a child but the provider reports disagreed form the tenth adjudication group. Table 2.3 defines the adjudication groups and gives the number of children in each in 1998.

A matching sheet is printed for every case. The matching sheet displays key data items for the child, and all of the household and provider-reported vaccination data. The matching sheets from each adjudication group are reviewed for discrepancies. Cases that need reconciliation because of differences between household and provider reports of the number or dates of specific vaccinations are assigned problem codes that describe the type of discrepancy. These cases are sent to a specially trained team of telephone interviewers and supervisors for reconciliation. Additionally, sample children for whom no providers responded in the initial data collection are sent to reconciliation. (See Figure 2.2 for an illustration of the reconciliation process.)

In reconciliation, the providers are called, and interviewers attempt to resolve the discrepancy. The providers are asked to check their medical records to verify the information returned on the IHQ or reported by the household. Providers are also asked whether they know of any other vaccination providers for the child.

If the provider is unable to reconcile the discrepancy or cannot be reached, or if the problem appears to be in the household data, telephone interviewers attempt to contact the household to

**Table 2.3: Distribution of Cases by Adjudication Group before Reconciliation, 1998 NHIS/NIPRCS<sup>1</sup>**

| Adjudication Group                            | Description  | Original Cases w/ Provider Data | Requiring Reconciliation | NRFUS Cases w/ Provider Data | Requiring Reconciliation |
|---|--|---------------------------------|--------------------------|------------------------------|--------------------------|
| <b>Household reports from shot record</b>     |  |                                 |                          |                              |                          |
| R1  | All dates and numbers of doses matched provider reports  | 63                              | 6                        | 1                            | 1                        |
| R2  | All number of doses matched provider reports, but at least one date was discrepant               | 60                              | 48                       | 0                            | 0                        |
| R3  | At least one discrepancy in number of doses; all discrepancies involved a household over-report  | 77                              | 67                       | 52                           | 44                       |
| R4  | At least one discrepancy in number of doses; all discrepancies involved a household under-report | 160                             | 99                       | 3                            | 3                        |
| R5  | At least two discrepancies in number of doses; at least one over-report and one under-report     | 67                              | 59                       | 2                            | 2                        |
| <b>Household reports from memory (recall)</b> |  |                                 |                          |                              |                          |
| H1  | No discrepancies in number of doses (including cases where the household responded "Don't Know") | 149                             | 23                       | 39                           | 16                       |
| H2  | At least one discrepancy in number of doses; all discrepancies involved a household over-report  | 132                             | 89                       | 95                           | 41                       |
| H3  | At least one discrepancy in number of doses; all discrepancies involved a household under-report | 205                             | 25                       | 7                            | 3                        |
| H4  | At least two discrepancies in number of doses; at least one over-report and one under-report     | 115                             | 99                       | 6                            | 4                        |
| <b>Multiple provider reports</b>              |  |                                 |                          |                              |                          |
| M   | Non-identical reports from two or more providers   | 148                             | 87                       | 17                           | 9                        |
| <b>Total number of children:</b>              |  | 1176 <sup>2</sup>               | 602                      | 222                          | 123                      |

<sup>1</sup> The distribution of adjudication groups in this table is different than the values of the variable ADJ\_GRP in the final data file. This table shows the number of cases in each group before reconciliation. A case may have a different adjudication group after reconciliation is completed.

<sup>2</sup> The number of children with provider data before reconciliation is less than the total number with provider data in the data file, because in reconciliation some providers returned data for children whom provider data were not returned in the initial data collection.

resolve the discrepancy. When contacted, the original household respondent or another knowledgeable adult is asked whether a shot card is available for the child. If the household has a shot card, specific dates are verified. If no shot card is available, the household respondent is asked to verify that the child had received vaccinations.

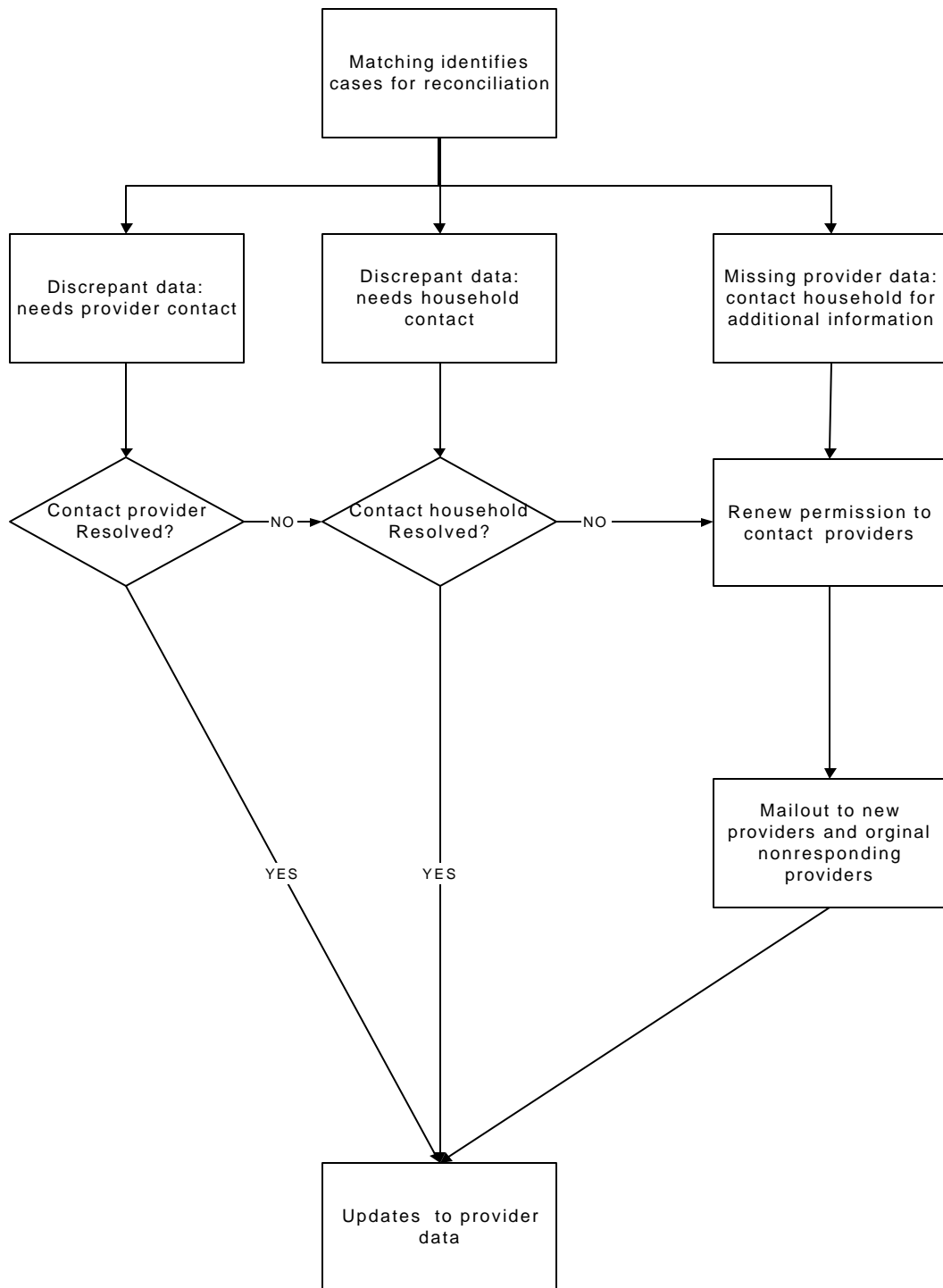
For those cases in which none of the providers for a child responded with vaccination data, a telephone interviewer contacts the household, verifies the names and addresses of providers previously reported, and asks for any other providers who may have immunization information for the child. This group includes cases in which:

- \$ The provider reported never treating the child.
- \$ The provider reported treating the child but not having immunization records, or indicated that the immunization records had been forwarded to another provider.
- \$ No provider responded for the child.
- \$ The provider contact information originally reported by the household was inadequate.
- \$ An original provider responded with some vaccination information, but it appeared that the child may have had another vaccination provider.

These households are mailed an advance letter that includes a provider information form and a consent form that the respondent can return by mail. Ten days after the advance letter is mailed, telephone interviewers attempt to contact the household by phone. The interviewer confirms the provider information originally reported by the respondent, and probes the respondent for additional providers. The interviewer obtains verbal consent to recontact the original providers and to contact any additional providers. In 1998, 341 cases in which the original provider never responded were eligible for reconciliation. However, if a household had been recontacted in the NRFUS, it was not called again, but some providers who had not responded in the NRFUS data collection were recontacted, as the permission form collected in the NRFUS was still valid.

Matching sheets were reviewed separately for the cases that had provider data from the original data collection and the NRFUS. However, reconciliation was conducted simultaneously for the two groups.

**Figure 2.2: Flow Diagram of 1998 NHIS/NIPRCS Reconciliation Process**





Of the 1,066 total cases eligible for reconciliation, the provider gave new information to reconcile a discrepancy in 145 cases. Seventeen discrepancies in provider data were resolved by reviewing the original IHQ. In 46 cases, the household reconciled a discrepancy. Additionally, providers returned data for 45 children for whom provider data were not returned in the initial data collection. These additional data were added to the original provider data for estimation. Table 2.4 summarizes the impact reconciliation had on the numbers of vaccinations reported.

| <b>Table 2.4: Reconciliation for 1998 NHIS/NIPRCS</b>                       |       |
|---|-------|
| Total number of children in reconciliation                                  | 1,066 |
| Number of children with changes to provider-reported number of doses        |       |
| DTP   | 155   |
| Polio   | 125   |
| MCV   | 115   |
| Hib   | 157   |
| Hep B   | 141   |
| Varicella   | 95    |
| Number of children aged 19-35 months who were <b>not</b> 4:3:1:3 up-to-date |       |
| Before reconciliation   | 174   |
| After reconciliation  | 140   |
| Change in 4:3:1:3 up-to-date status   | -34   |
| Number of children with changes to shot dates                               |       |
| Changes to household-reported shot dates                                    | 36    |
| Changes to provider-reported shot dates                                     | 198   |

## 2.4 Data Processing

After reconciliation is completed, the new data are combined with the original data for the estimation of vaccination coverage rates. The combined data are reviewed for certain kinds of discrepancies that may remain, including:

- the date of birth, name, or gender given by the provider did not match the NHIS data;
- multiple providers reported different dates of birth;
- the provider reported a MCV or varicella shots before 9 months of age;
- vaccination dates before the date of birth;

- a single provider report that contained consecutive vaccination dates within 28 days, or multiple provider reports had vaccination dates within 14 days; and
- vaccination dates that were out of sequence.

If the discrepancy can be resolved by reviewing the dates of other vaccinations the child had received (e.g., it may be evident that part of the date was transposed or incorrectly written), the data are then edited.

Once all the data have been edited, a disposition code (DISPCODE) that indicates the completeness and validity of the immunization data is assigned to every case with provider data. Cases with DISPCODE equal to 7 have provider data, but the completeness of the provider data is unknown. Therefore, cases with DISPCODE = 7 are not used in calculating the estimates of vaccination coverage. All other cases with a nonmissing DISPCODE are considered to have usable provider data.

## **2.5 Informed Consent, Security, and Confidentiality of Information**

The data collection procedures of the NHIS assure the respondent of the confidentiality of his/her responses and the voluntary nature of the survey. Informed consent is obtained from the respondent (generally the parent or guardian of the child) to participate in the household interview and also (at the end of the interview) to contact the child's vaccination providers.

Information in the NHIS/NIPRCS is collected and processed under high security. To ensure privacy of the respondents and confidentiality of sensitive information, NCHS has established standards for release of data from all NCHS surveys. All CDC staff and contractor staff involved with the NHIS/NIPRCS sign the NCHS confidentiality agreement and follow procedures to prevent disclosure.

All information in the NHIS/NIPRCS is collected under strict confidentiality and can be used only for research purposes [Section 308(d) of the Public Health Service Act, 42 U.S. Code 242m(d), and the Privacy Act of 1974 (5 U.S. Code 552a)]. Prior to the public release, the

contents of the public-use data file go through an extensive review by the NCHS Disclosure Review Board to protect confidentiality of the participants as well as the data.

## **Chapter 3. Estimation of Vaccination Coverage**

### **3.1 NHIS Weighting Information**

The NHIS uses a multistage sample design to represent the civilian noninstitutionalized population of the U.S.; each person interviewed has a known probability of selection. The resulting sampling weights (initially equal to the reciprocal of the selection probability) are adjusted for unit nonresponse and poststratified to population control totals from the Census by sex, age, and race/ethnicity. Thus, each respondent has a sample weight that can be used to produce national estimates.

The foundation for the 1998 NHIS/NIPRCS sampling weight is a child-level weight that comes from the NHIS Immunization Supplement data file. This Final Annual Weight (WTFA\_IM) is included in the public-use data file. It includes design, nonresponse, and poststratification adjustments for sample children under 18 years of age and additional children aged 12-35 months in sampled households. See Appendix H for summary statistics of the Final Annual Weight.

### **3.2 Provider-Adjusted Estimates**

The provider-adjusted method of estimation produces estimates of percentages of children who are up-to-date for various vaccines and combinations of vaccines. The provider-adjusted estimates are calculated by first dividing the children into a set of weighting classes for each vaccine. Within each weighting class, the proportion of children with usable provider data who are up-to-date is calculated, and then applied to the total number of children within the weighting class. The estimated numbers of up-to-date children and the total numbers of children are then summed to produce an overall coverage estimate for that vaccine. These estimates are comparable to the estimates produced in the National Immunization Survey (Stokley et al. 2000; Bartlett et al. 2001). Section 4.1 gives detailed instructions for calculating provider-adjusted estimates.

### **3.3 Best Values**

The best values combine the household and provider data to produce a vaccination report judged to be most accurate for each child. Because the best value vaccination dates include data from both sources, more children have best values for vaccination dates than have provider data. The inclusion of more children reduces the potential bias in estimates calculated using the best values for vaccination dates.

For the 1998 NHIS/NIPRCS, best values for vaccination dates were developed for two main groups of children: children with no provider data who were 4:3:1:3 up-to-date according to the household report from a shot card; and all children who had usable provider-reported vaccination information (See section 2.4 for definition of useable provider data).

For the children who were 4:3:1:3 up-to-date from a shot card, the household-reported vaccination dates were evaluated to see whether they were consistent with the date of birth and the vaccination schedule. The record was also checked for the degree of agreement between vaccination dates. If the record met these criteria, then the shot card dates were inserted as best values for vaccination dates, along with any edits to the dates that seemed warranted, such as transposed dates or reports with the same month and day but in which the year was inconsistent.

For the children with usable provider data, the household and provider reports were compared. If the household used a shot card and there was no agreement between the two sources, the household-reported vaccination dates were considered unusable, and the provider vaccination dates were used as the best values for dates. (Provider reports that appeared to be inadequate or for the wrong child were previously excluded. See Section 2.4 for the definition of usable provider data.) If there was some agreement between the provider-reported and household-reported vaccination dates, the household information was deemed usable, and these shot card vaccination dates were used to supplement the provider vaccination dates to create a composite vaccination record. If the household reported from recall, the provider-reported dates were used as the best values. Children with best value vaccination dates were assigned a flag (BESTVAL=1) so that they can easily be identified in the data file.

### 3.4 Best Value Weights

The sample weights of children with best values for vaccination dates were adjusted to account for children without best values. The method used to adjust the weights was similar to the method used in the 1996 NHIS/NIPRCS, in order to maintain comparability between the years. A total of 11 weighting classes were formed using the following criteria: the vaccination status according to the household report (up-to-date, not up-to-date, missing), shot card use (shot card used, no shot card), and education of the respondent (high school or less, college or higher, missing). These three variables resulted in 18 cells; some cells were collapsed when they contained too few cases. Table 3.1 shows the 11 cells used in the weighting.

| 4:3:1:3 status according to household | Shot card                       |                   | No shot card        |                   |                   |
|---------------------------------------|---------------------------------|-------------------|---------------------|-------------------|-------------------|
|                                       | High school or less, or missing | College or higher | High school or less | Education missing | College or higher |
| Up-to-date                            | 1                               | 2                 | 3                   | 5                 | 4                 |
| Not up-to-date                        | 6                               | 7                 | 8                   |                   | 9                 |
| Missing                               |                                 |                   | 10                  |                   | 11                |

The sample weight for the children with best values was adjusted by multiplying the NHIS/IM weight for the child (WTFA\_IM) by the ratio of the sum of the weights for all children in the weighting class to the sum of the weights for children with best values. In addition to this adjustment, the weights were adjusted through raking (Lohr 1999; Izrael et al. 2000) so that the sum of the weights agreed with the population control totals for poverty status, race/ethnicity, and telephone status in the U.S. (This adjustment was not done in 1996.) The result of the raking is the best value weight (WT\_BV2). See Appendix H for summary statistics of the NHIS/IM weights and the best value weights.

### 3.5 Imputed Best Values

For children without best values, imputation was used to calculate a total number of doses for each antigen and the up-to-date status of the child. The variables considered for forming imputation classes were the same as those used to form the weighting classes for children with best values: whether a child was up-to-date on the 4:3:1:3 series according to the household report, whether a shot card was used, and the education of the respondent. Some of the 18 cells in the cross-classification of the three variables were collapsed after looking at the distribution of children in the sample. Cells that contained few donors relative to the recipients were collapsed, resulting in a total of seven imputation classes.

| 4:3:1:3 status according to jousehold | Shot Card                       |                   | No Shot Card                   |                   |
|---------------------------------------|---------------------------------|-------------------|--------------------------------|-------------------|
|                                       | High school or less, or missing | College or higher | High school or less or missing | College Or higher |
| Up-to-date                            | 1                               | 2                 | 3                              |                   |
| Not up-to-date                        | 4                               | 5                 | 6                              |                   |
| Missing                               |                                 |                   | 7                              |                   |

Within each imputation class, a hot-deck imputation procedure was used to impute the number of doses of each vaccine and series using data from children with non-missing best values. Cases in which best values were imputed are marked by the variable IMP\_FLAG.

### 3.6 Children Aged 12-18 Months

In the absence of a standard definition of Up-to-date for children between 12 and 18 months of age for either a specific vaccine or a series of vaccines, the best values were used to calculate weighted percentages of children receiving one or more doses of each vaccine. See Appendix C for a table with these estimates.

## Chapter 4. Calculating Estimates of Vaccination Coverage and Standard Errors

As mentioned in the previous chapter, the NHIS/NIPRCS uses several methods for producing estimates of vaccination coverage. This chapter provides the user of the data set with instructions for replicating these methods.

### 4.1 Provider-Adjusted Estimates of Vaccination Coverage

As described in Section 3.2, the provider-adjusted estimates use the children with usable provider data to estimate the proportion of children who are up-to-date in the sample as a whole. The steps required to obtain the estimates are given below:

**Step 1:** Use the sample weight WTFA\_IM in the following steps.

**Step 2:** All children between the ages of 19 and 35 months for whom the NHIS/IM was completed are divided into weighting classes specific to each vaccine. The weighting classes form two main groups according to whether the household used a shot card. All children belonging to households that used shot cards to report the number and dates of vaccinations are in the first group, and children from households that reported from memory recall belong to the second group. Within each main group, children are divided into subgroups by the number of doses reported by the household. Table 4.1 shows the weighting classes for calculating the provider-adjusted estimate of DTP coverage.

The weighting classes for the other vaccines appear in Appendix D in the column “Number of Doses Reported by Household.”

**Step 3:** Sum the weights (WTFA\_IM) of children with usable provider data in each weighting class. This gives the estimated number of children with provider data. Call this Sum 1. (See Column 1 in Table 4.2.)

Next, sum the sample weights of all children with usable provider data who are up-to-date on the specific vaccine. This gives the estimated number of children who are up-to-date among children with provider data. Call this Sum 2. (See Column 2 in Table 4.2.)

Compute the ratio [ Sum 2/Sum 1]. This gives the proportion of children with usable provider data who are up-to-date in this weighting class. (See Column 3 in Table 4.2.)

| <b>Table 4.1: Weighting Classes for DTP, 1998 NHIS/NIPRCS</b> |                               |
|---|-------------------------------|
| <b>Use of Shot Card</b>                                       | <b>Number of Doses of DTP</b> |
| Shot Card Used  | 4+                            |
|   | 3                             |
|   | 2                             |
|   | 1                             |
|   | 0                             |
| No Shot Card  | 4+                            |
|   | 3                             |
|   | 2                             |
|   | 1                             |
|   | 0                             |
|   | All*                          |
|   | Don't know/Missing            |

\* The household respondent was not able to give the total number of shots received, but indicated that the child was up-to-date on this vaccine.

**Step 4:** Apply this proportion to the total weighted number of children in the weighting class. The total weighted number of children is obtained by simply aggregating the sample weights of all children. (See Column 4 in Table 4.2) This product gives the estimated number of children who are up-to-date in that weighting class. (See Column 5 in Table 4.2)

**Step 5:** Aggregate the estimated numbers of children who are up-to-date on the specific vaccine over all weighting classes. (See the Total entry in Column 5 in Table 4.2.)

**Step 6:** Divide the number obtained in Step 5 by the total estimated number of children over all the weighting classes. This is simply the sum of the weights of all children who completed the NHIS/IM. (See the Total entry in Column 4 in Table 4.2.)

**Step 7:** The number obtained in Step 6 (when multiplied by 100) gives the percentage of children who are up-to-date on the specific vaccine. This is the provider-adjusted estimate of coverage for that vaccine.

| <b>Weighting Class</b>  | <b>(1)<br/>Sum of the weights of all children with usable provider data</b> | <b>(2)<br/>Sum of the weights of children who are up-to-date among children in (1)</b> | <b>(3)=(2)/(1)<br/>Proportion of children who are up-to-date</b> | <b>(4)<br/>Sum of the weights of all children with and without provider data</b> | <b>(5)=(4)x(3)<br/>Estimated number of children who are up-to-date</b> |
|---|---|--|--|--|--|
| Shot Card 4+  | 781,124   | 717,454  | .9185  | 1,335,447  | 1,226,594  |
| 3   | 222,407   | 158,752  | .7138  | 430,386  | 307,205  |
| 2   | 59,425  | 41,005   | .6900  | 104,114  | 71,842   |
| 1   | 19,124  | 16,909   | .8842  | 51,220   | 45,288   |
| 0   | 4,098   | 0  | .0000  | 9,947  | 0  |
| No Shot Card 4+   | 41,724  | 40,033   | .9595  | 92,261   | 88,522   |
| 3   | 74,109  | 58,459   | .7888  | 172,726  | 136,251  |
| 2   | 37,472  | 34,416   | .9184  | 84,957   | 78,028   |
| 1   | 28,516  | 16,484   | .5781  | 52,130   | 30,134   |
| 0   | 37,235  | 32,531   | .8737  | 119,833  | 104,694  |
| All <sup>1</sup>  | 1,185,159   | 1,024,153  | .8641  | 2,369,006  | 2,047,172  |
| Don't Know/<br>Missing  | 270,517   | 215,101  | .7951  | 635,944  | 505,669  |
| Total   | 2,760,910   | 2,355,297  | .8531  | 5,457,971  | 4,641,399  |
| <b>Percentage of children who are up-to-date for DTP: <math>[4,641,272/5,457,971] \times 100 =</math></b> |   |  |  |  | <b>85.04</b>   |

<sup>1</sup> All<sup>1</sup> indicates that the household respondent was not able to give the total number of shots received, but reported that the child was up-to-date on this vaccine.

This example includes data from both the original data collection and the NRFUS. Provider-adjusted estimates can be calculated including or excluding the provider data collected in the NRFUS. These cases can be identified by using the variable NRF\_FLG.

See Appendix A for the provider-adjusted estimates of coverage for other vaccines and series. The estimates including NRFUS cases can be found in the column “Final Provider-Adjusted Estimates.” Provider-adjusted estimates without NRFUS cases will correspond to the column labeled “Initial + Reconciliation” in the table in the appendix.



## 4.2 Best Value Estimates and Using Imputed Best Values

Best value estimates should be calculated using the best value weight (WT\_BV2), which incorporates an adjustment for children without best values. When using the imputed best values, the NHIS/IM sampling weight (WTFA\_IM) should be used. Cases for which best values were imputed are flagged in the data set (IMP\_FLAG = 1).

Any estimates of vaccination coverage calculated using the best values for vaccination dates must include the NRFUS cases. The best value weight (WT\_BV2) was calculated using all cases with provider data, and excluding the NRFUS cases would produce inaccurate results.

See Appendix A for the coverage estimates for each vaccine and series using the best value and imputed best value data.

## 4.3 Calculating Standard Errors

### 4.3.1 Standard Errors of NHIS Estimates

Data users should refer to the report *Design and Estimation for the 1995-2004 National Health Interview Survey* (Series 2, No. 130), available on the NCHS Web site

<http://www.cdc.gov/nchs/nhis.htm>, for detailed instructions on how to calculate standard errors (using SUDAAN) for the 1998 NHIS estimates.

### 4.3.2 Standard Errors of Best Value Estimates

Vaccination coverage rates are ratio estimates, and the Taylor linearization method can be used to compute the standard errors of these estimates (Nixon et al. 1996). For computing the standard errors of best value estimates of vaccination coverage rates, the “pseudostrata” created for the NHIS with two PSUs per stratum were first considered. Because only a subset of the sample of children had best values, many of the strata were empty, in the sense that the two PSUs in the stratum did not have children with best values. Therefore, the 336 NHIS strata were collapsed to 203 strata such that each stratum had two PSUs containing children with best values. The standard errors of the best value estimates were computed using SUDAAN software (Shah et al. 1997).

Appendix E gives an example of a SAS program that calls SUDAAN to calculate standard errors, including the specifications for collapsing the 1998 NHIS strata. For the 1997 NHIS/NIPRCS, strata were manually collapsed as needed to ensure a minimum of two PSUs per stratum. For 1998, an algorithm (SAS program) was used to collapse the strata. Applying that program to 1997 could yield a somewhat different set of collapsed strata and therefore standard errors might differ slightly. Other software such as STATA (Stata Corporation 2001) or SAS (SAS Institute Inc. 1999) can also be used to estimate the standard errors by the Taylor linearization method.

The standard errors of the best value estimates for all vaccines and series can be found in Appendix A.

### **4.3.3 Standard Errors of Estimates Based on Imputed Best Values**

Treating the imputed best values as if they were responses and then computing the variance estimates, using a standard method like Taylor linearization, generally results in underestimation of the variance. Alternative methods of variance estimation take into account the presence of imputed values and adjust for this underestimation. A jackknife variance estimation method suggested by Rao and Shao (1992) was used to compute the variance of the estimates based on imputed values. (For details of this procedure, see the internal methodology report. Abt Associates Inc. 2002.) The table in Appendix A includes the standard errors.

## Chapter 5. Public-Use Data File

This chapter contains details about the 1998 NHIS/NIPRCS data file and information for users and analysts of these data. The data file is in ASCII format. A code book and a program for reading the data into SAS are available with this data file.

### 5.1 File Description

Data in the PUF come from two sources: the 1998 NHIS/IM and the 1998 NHIS/NIPRCS. The source of each variable is noted in the code book. Data are provided at the child level; that is, each child has one record, which includes the household and provider information. The data file contains 2,966 records for children aged 12-35 months. If more than one child was interviewed in a household, the household variables, including the ID number, are included in each child's record.

### 5.2 Data Cleaning

Data from the Immunization History Questionnaire were checked for internal consistency, including skip-pattern logic and out-of-range or otherwise invalid values. The provider data file was checked for duplicate records from the same provider. When a child had data from more than one IHQ, decision rules were applied to produce the most complete record of the child's immunization history. The analyst should refer to the documentation provided by the NCHS for data collected in the NHIS or the NHIS/IM.

As described in Sections 2.3.3 and 2.4, some provider data may have been edited as a result of the reconciliation and file preparation processes.

For shot date variables from the IHQ, if the day of the month was missing, it was imputed to 15" for the purpose of calculating the age in days at the time of vaccination. If this value created a vaccination date before the child's date of birth, the value would be changed to be equal to the date of birth.

### 5.3 Missing Value Codes

A standard coding scheme, based on the NHIS protocol, designates **Arefused@** and **Adon't know@** responses on all variables. **ARefused@** responses are coded as **A7@** (with leading 9s filling the width of the field), and **Adon't know@** responses are coded as **A9@** (again, with leading 9s). A code of **A8@** indicates **Anot ascertained@** responses, which typically occur when an in-the-universe respondent had a blank field or the field contained an invalid code.

Because the appropriateness of some questions depended on the availability of shot records, not all questions were asked of all respondents. Cases that were not eligible to answer specific questions are coded as A. <BLANK: NOT IN UNIVERSE>.” The notes in the code book describe the universe for each question.

## 5.4 Variable Naming Conventions

The provider data from the Immunization History Questionnaires are used to create numerous child-level composite variables, as described below. The names of the variables giving the number of doses received for each vaccine begin with P\_NUM. For example, P\_NUMHEP gives the number of doses of hepatitis B vaccine received by the child according to the provider data.

The provider data are also used to form variables for age in days and age in months at each vaccination. For age in days and age in months, either 4 or 8 variables are created, depending on the number of doses recommended for the vaccine. The variable names for age in months end with AGn, where n is the dose number. For example, HEPAG1 to HEPAG8 give age in months for 8 possible doses of hepatitis B vaccine. Similarly, for age in days at vaccination, the variable names start with D and end with AGn. DHEPAG1 to DHEPAG8 give age in days for 8 possible hepatitis B vaccination doses.

An up-to-date status indicator variable was created for each vaccine. These variables use the best values. Each of these variables begins with B\_UTD. For example, the variable B\_UTDHEP indicates whether the child received 3 or more doses of hepatitis B vaccine.

To accommodate the large number of types of vaccinations, a vaccination-type variable was created for each shot or dose. For example, the vaccination-type variable for DTP indicates whether the specific dose was a DTP, DTaP, DT, unknown (unmarked) type of DTP, DTP-Hib, DTaP-Hib, or an unknown (unmarked) type of DTP-Hib vaccination.

## 5.5 Changes from 1997 NHIS/NIPRCS Data File

### 5.5.1 New Variables

Ten variables were added to the public-use data file in 1998.

**AGEGRP** - This variable recodes the child’s age in months (ICAGEMR) into 4 categories (12-18 months, 19-24 months, 25-29, and 30-35 months.)

**HEP\_BRTH** - This variable indicates whether the provider indicated on the IHQ that the child received a hepatitis B shot at birth. The provider may have indicated that the child received the birth dose, without giving a date for that dose.

**NCARER1** - This variable is a composite of the variables NCARE\_11 to NCARE\_14. It indicates whether all, some, or none of the child's providers reported that they provide comprehensive child care.

**NCARER2** - This variable is a composite of the variables NCARE\_21 to NCARE\_24. It indicates whether all, some, or none of the child's providers reported that they provide acute illness care.

**NCARER3** - This variable is a composite of the variables NCARE\_31 to NCARE\_34. It indicates whether all, some, or none of the child's providers reported that they provide follow-up visits.

**NCARER4** - This variable is a composite of the variables NCARE\_41 to NCARE\_44. It indicates whether all, some, or none of the child's providers reported that they provide after-hours phone coverage.

**NCARER5** - This variable is a composite of the variables NCARE\_51 to NCARE\_54. It indicates whether all, some, or none of the child's providers reported that they provide programs or services for the Women, Infant and Children (WIC) program.

**NCARER6** - This variable is a composite of the variables NCARE\_61 to NCARE\_64. It indicates whether all, some, or none of the child's providers reported that they provide other types of services.

**NRF\_FLG** - This variable indicates whether the provider data for the child were collected in the NRFUS.

**VFC\_PRO** - This composite variable combines the responses to VFC\_PRO1 to VFC\_PRO4 to indicate whether any of the child's providers participate in the Vaccines for Children (VFC) program.

## **5.5.2 Variables with Different Response Categories**

Additionally, two variables have new response categories. A checkbox was added to the IHQ to distinguish DTP-Hib and DTaP-Hib combination shots. All variables that indicate the type of DTP or Hib shot given now include this as a potential type of

vaccine. The categories for the variable FACTYPE also changed from 1997. (See Appendix B for the new IHQ.)

## 5.6 Explanatory Notes for Specific Variables

### ADJ\_GRP

The adjudication groups are used for assessing agreement and consistency between the provider report(s) and the household report of vaccinations. See Section 2.3.3 for a detailed explanation of the matching and reconciliation procedures.

#### Household reports from shot record

- R1 All dates and numbers of doses match provider reports
- R2 All numbers of doses match provider reports, but at least one date is discrepant
- R3 At least one discrepancy in number of doses; all discrepancies involve a household over-report
- R4 At least one discrepancy in number of doses; all discrepancies involve a household under-report
- R5 At least two discrepancies in number of doses; at least one over-report and one under-report

#### Household reports from memory recall

- H1 No discrepancies in number of doses (includes cases where the household responds "Don't Know")
- H2 At least one discrepancy in number of doses; all discrepancies involve a household over-report
- H3 At least one discrepancy in number of doses; all discrepancies involve a household under-report
- H4 At least two discrepancies in number of doses; at least one over-report and one under-report

#### Multiple provider reports

- M Non-identical reports from two or more providers

### DISPCODE

The DISPCODE refers to the completeness and validity of the immunization information from all the Immunization History Questionnaires returned for the child.

- 1 All identified providers responded, no problems indicated in cross-check between household and provider shot dates.
- 2 All identified providers responded, no shot card to cross-check.
- 3 All identified providers responded, poor immunization history matching results.
- 4 All identified providers responded, poor immunization history matching

- results, additional mismatch indicators present.
- 5 Some but not all identified providers responded, but provider information indicates 4:3:1:3:3 up-to-date.
  - 6 Some but not all identified providers responded, but provider information matches shot card immunization history.
  - 7 Some but not all identified providers responded, completeness of provider immunization history is unknown.
  - 8 Some but not all identified providers responded, but provider information indicates 4:3:1:3:3 up-to-date when immunizations after the interview date are included.
  - 9 Some but not all identified providers responded, but provider information indicates at least as many doses for each vaccine as the household respondent (or at least 1 dose for MCV).
  - 10 Some but not all identified providers responded, but the household reported an inexact number of vaccinations (~~A~~All,~~A~~Don't Know,~~A~~Refused or missing) for one or more vaccines, and any exact responses meet previous criteria (for DISPCODE 9).
  - 11 Some but not all identified providers responded, but definite number of shots was reported by household not from a shot card for one or more vaccines, and any other vaccines meet previous criteria (for DISPCODE 9 or 10).

When analyzing children with provider data, cases with DISPCODE = 7 should not be included.

#### **NUM\_DTP, NUM\_POLI, NUM\_MMR, NUM\_HIB, NUM\_HEPB, NUM\_CPOX**

These variables were calculated by totaling the number of each type of vaccination reported by the household respondent in the NHIS/IM, either from a shot card or from recall.

#### **PSU**

The variable identifies the primary sampling unit (PSU) and is used in variance estimation. Refer to the NHIS/IM documentation for more information.

#### **STRATUM**

To calculate the standard errors of the best value estimates of vaccination coverage, the original NHIS strata need to be collapsed. See Appendix E for an example program.

## 5.7 Flags

The following flag variables are included in the data file:

**BDOBFLAG** - A value of 1 indicates that no provider date of birth information was obtained and BEST\_DOB is the date of birth reported by the household respondent.

**BESTVAL** - A value of 1 indicates that best value vaccination dates were determined. A value of 2 indicates that the child does not have best values.

**BRDOBFLG**- A value of 1 indicates that BEST\_DOB was assigned after recontacting the household and/or providers to reconcile differences.

**IMP\_FLAG** - A value of 1 indicates that the best value vaccination status was imputed.

**PRO\_FLAG** - A value of 1 indicates that the child was 4:3:1:3 up-to-date according to the household's shot record. A value of 2 indicates the child was not 4:3:1:3 up-to-date. The value is missing for children in households that did not use shot cards.

## 5.8 Data Alerts

This section details known problems with the data.

Considerable time elapsed between the 1998 NHIS/IM data collection and the collection of vaccination data from providers, in some cases up to two years. The consent given by respondents was good for one year only, and in many cases it was necessary to renew the permission form before sending the Immunization History Questionnaires to providers. In total, 1,805 valid permission forms with complete provider information were collected by the Census Bureau. Of those, 809 cases that expired before a questionnaire could be mailed to the provider. However, 374 of those cases were recontacted and renewed permission, and an IHQ was sent to the provider. Between the number of valid forms collected, and the forms that expired, a relatively low percentage of children ended up with provider vaccination data.

Although all provider-reported shot dates are reviewed and sent for reconciliation, some inconsistencies may remain in the data that could not be verified. These include shot dates that are too close together, and certain shots given before 38 days of age that are not recommended. Further, any variables derived from the provider reports (e.g., VISITS) may contain inaccuracies if those data could not be reconciled or verified.



## 5.9 Code Book

A complete listing of the variables included in the public-use data file is available in the *1998 National Health Interview Survey/National Immunization Provider Record Check Study Public-use Data File Code Book*. The code book contains a table of contents and an alphabetic list of variables. Then each variable is listed with either 1) the frequency of a given response, the response value, and the formatted response label; 2) a count of missing and non-missing values with summary statistics; or 3) a count of missing/non-missing values.

For categorical variables, the code book gives the frequency of each category. For continuous variables, the mean, median, minimum, and maximum values are displayed.

## 5.10 Guidelines for Citation of Data

Any published material derived from the data should acknowledge NCHS as the original source. The suggested citation to appear at the bottom of all tables is as follows:

Source: CDC, NIP and NCHS (2002), 1998 National Health Interview  
Survey/National Immunization Provider Record Check Study

In a bibliography, the citation should read:

U.S. Department of Health and Human Services. 1998 National Health Interview  
Survey/National Immunization Provider Record Check Study (machine readable data  
file and documentation). National Center for Health Statistics, Centers for Disease  
Control and Prevention, Hyattsville, MD, 2002.

The published material should also include a disclaimer that credits any analyses, interpretations, or conclusions reached to the author (recipient of the data file) and not to NCHS, which is responsible only for the initial data. Consumers who wish to publish a technical description of the data should make an effort to ensure that the description is not inconsistent with that published by the NCHS.

Please place the acronym NHIS/NIPRCS in the titles, keywords, or abstracts of journal articles and other publications in order to facilitate retrieval of such materials in bibliographic searches.

## References

- Abt Associates Inc. 2002. *NHIS/NIPRCS 1998 Final Methodology Report*. Submitted to the National Center for Health Statistics, Centers for Disease Control and Prevention, Hyattsville, MD. Chicago, IL: Abt Associates Inc.
- Bartlett, Diana L., Ezzati-Rice, Trena M., Stokley, Shannon, and Zhao, Zhen. 2001. Comparison of NIS and NHIS/NIPRCS Vaccination Coverage Estimates. *American Journal of Preventive Medicine*, Volume 20, Number 4S, pp. 25-27.
- Ezzati-Rice, Trena M., Zell, Elizabeth R., Massey, James T., and Nixon, Mary Gessley. 1996. Improving the Assessment of Vaccination Coverage Rates with the Use of Both Household and Medical Provider Data. *1996 Proceedings of the Section on Survey Research Methods*, Alexandria, VA: American Statistical Association, pp. 335-340.
- Izrael, David, Hoaglin, David C., and Battaglia, Michael P. 2000. A SAS Macro for Balancing a Weighted Sample. The Twenty-Fifth Annual SAS User's Group International Conference, Cary, NC: SAS Institute, Inc. pp 1350-1355.
- Lohr, Sharon L. 1999. *Sampling: Design and Analysis*. Pacific Grove, CA: Duxbury Press.
- Nixon, Mary Gessley, Kalton, Graham, Brick, J. Michael, Ezzati-Rice, Trena, Zell, Elizabeth R. 1996. Variance Estimation with Missing Best Values in the NIPRCS. *1996 Proceedings of the Section on Survey Research Methods*, Alexandria, VA: American Statistical Association, pp. 347-352.
- Peak, Rebecca R. and Cadell, Diane M. 1996. Overview of the National Immunization Provider Record Check Study. *1996 Proceedings of the Section on Survey Research Methods*, Alexandria, VA: American Statistical Association, pp. 332-334.
- Rao, J.N.K., and Shao, J. 1992. Jackknife Variance Estimation with Survey Data under Hot Deck Imputation. *Biometrika*, 79, 811-822.
- SAS Institute Inc. 1999. *SAS/STAT User's Guide Version 8*. Cary, NC: SAS Institute Inc.
- Shah, B.V., Barnwell, B.G. and Bieler, G.S. 1997. *SUDAAN User's Manual, Release 7.5*. Research Triangle Park, NC: Research Triangle Institute.
- Stata Corporation. 2001. *Stata Reference Manual*. College Station, TX: Stata Press.

Stokley, Shannon, Battaglia, Michael P., Khare, Meena, Daniels, Danni, and Ezzati-Rice, Trena M. 2000. Comparison of the NIS and NHIS/NIPRCS Estimation Methods. *2000 Proceedings of the Section on Survey Research Methods*, Alexandria, VA: American Statistical Association, pp. 721-725.

Zell, Elizabeth R., Ezzati-Rice, Trena M., Massey, James T., and Brick, J. Michael. 1996. Response Errors Associated with Household Reports of Immunizations: Analysis of Subgroup Differences. *1996 Proceedings of the Section on Survey Research Methods*, Alexandria, VA: American Statistical Association, pp. 341-346.

## **APPENDICES**

**APPENDIX A**  
**ESTIMATES OF VACCINATION COVERAGE RATES**  
**AMONG CHILDREN AGED 19-35 MONTHS**

## Estimates of vaccination coverage in the 1998 NHIS/NIPRCS

| Vaccination and Series <sup>1</sup> | Provider-Adjusted Estimates |                              |                                       |                                      | Best Value Estimates           |      |  |               |
|-------------------------------------|-----------------------------|------------------------------|---------------------------------------|--------------------------------------|--------------------------------|------|--|---------------|
|                                     | Initial <sup>2</sup>        | Initial + NRFUS <sup>3</sup> | Initial + Reconciliation <sup>4</sup> | Final Provider Adjusted <sup>5</sup> | Final Best Values <sup>6</sup> |      | Including Imputed Best Values <sup>7</sup> |               |
|                                     |                             |                              |                                       |                                      | Estimate                       | S.E. | Estimate                                   | Rao-Shao S.E. |
| DTP                                 | 84.9                        | 84.0                         | 85.4                                  | 85.0                                 | 85.2                           | 1.3  | 86.4                                       | 1.5           |
| DTP3                                | 95.4                        | 95.4                         | 95.9                                  | 96.1                                 | 96.1                           | 0.7  | 96.4                                       | 0.6           |
| POLIO                               | 91.3                        | 91.2                         | 91.5                                  | 91.7                                 | 92.3                           | 1.0  | 92.8                                       | 1.2           |
| MCV                                 | 91.7                        | 92.0                         | 92.8                                  | 93.0                                 | 93.8                           | 0.9  | 94.2                                       | 1.1           |
| HIB                                 | 94.0                        | 93.5                         | 94.2                                  | 94.0                                 | 94.2                           | 0.9  | 94.4                                       | 0.8           |
| HEP B                               | 88.3                        | 87.7                         | 89.3                                  | 89.1                                 | 89.6                           | 1.1  | 90.3                                       | 0.9           |
| 4:3:1                               | 81.2                        | 80.4                         | 81.5                                  | 81.4                                 | 82.2                           | 1.4  | 83.6                                       | 1.6           |
| 4:3:1:3                             | 80.1                        | 79.3                         | 80.6                                  | 80.4                                 | 81.1                           | 1.4  | 82.3                                       | 1.6           |
| 4:3:1:3:3                           | 74.9                        | 73.8                         | 76.1                                  | 75.6                                 | 76.1                           | 1.5  | 77.4                                       | 1.5           |

<sup>1</sup> 4:3:1 means up-to-date with 4 or more doses of DTP, 3 or more doses of polio, and 1 or more doses of MCV. 4:3:1:3 includes 3 or more doses of Hib, and 4:3:1:3:3 includes 3 doses or more of Hep B.

<sup>2</sup> Provider-adjusted estimates are calculated from provider-reported data. See Section 4.1 for a complete description of how provider adjusted estimates are calculated. The initial estimate is calculated from unreconciled data and cannot be reproduced using the public-use file.

<sup>3</sup> This estimate includes the NRFUS cases, but does not include the data from reconciliation. It cannot be reproduced using the public-use file.

<sup>4</sup> This estimate does not include the cases with provider data collected in the NRFUS.

<sup>5</sup> This estimate includes the NRFUS cases, and reconciliation for both the initial and NRFUS cases.

<sup>6</sup> The Final Best Value estimates include the NRFUS cases and are calculated using the weight WT\_BV2. See Section 4.2 for a description of the procedures to calculate best values. See Section 4.3 for a description of the standard errors.

<sup>7</sup> The up-to-date status is imputed for children who do not have best vaccination values. See Section 3.5 for a description of the imputation process.

**APPENDIX B**  
**1998 NHIS/NIPRCS IMMUNIZATION HISTORY QUESTIONNAIRE**

**NATIONAL IMMUNIZATION PROVIDER RECORD CHECK STUDY  
IMMUNIZATION HISTORY QUESTIONNAIRE**

INSTRUCTIONS: Please review your records and complete this questionnaire for the child identified below. Then mail it in the postage-paid envelope provided or fax it to: FAX: 1-800-293-5155

The Immunization History Questionnaire is voluntary. The National Center for Health Statistics, the Centers for Disease Control and Prevention, their contractors or grantees will use this information only for statistical purposes in health research, and no information which identifies the child, the child's family, doctors or medical care providers will ever be released or published. (Title 42, United States Code, Section 242k.)

|  |   |
|--|---|
| <b>FOR OFFICE USE ONLY</b>               | For LABEL placement (printed from <i>NIPTRACK</i> ) |
| TYPE<br><br>Telephone<br><br>Mail<br>Fax |   |

1. Which of the following best describes your records of immunization for this child? (Check only one box.)
  - G a. Have immunization record for this child. (Go to item 2 below.)
  - G b. Have provided care to this child, but do not have his/her immunization record. (Go to question 3 on next page.)
  - G c. Have no record of providing care to this child. (Return questionnaire to CDC as instructed above.)
  - G d. Other: \_\_\_\_\_
  
2. Referring to all sources of immunization history, please specify below the month, day and year when each of the following immunizations was given, either by your office or by another provider (OP), as documented in your records. If you prefer, you may attach a copy of the complete immunization history and complete Questions 3 through 12.

Circle the "OP" for any immunization given by another provider, after the date for that immunization. Please see item 12.

|  | Dates of immunization (MM - DD - YYYY)       |  |  |  |  |
|--|--|--|--|--|--|
|  | (1)  | (2)  | (3)  | (4)  | (5)  |
| DT/DTP/DTaP<br>(check one box per date)                  | ____-____-____ OP<br>9 DT 9 DTP<br>9 DTaP    | ____-____-____ OP<br>9 DT 9 DTP<br>9 DTaP    | ____-____-____ OP<br>9 DT 9 DTP<br>9 DTaP    | ____-____-____ OP<br>9 DT 9 DTP<br>9 DTaP    | ____-____-____ OP<br>9 DT 9 DTP<br>9 DTaP    |
| DTP-Hib (Tetramune or Acthib/DTP)<br>DTaP-Hib (TriHibit) | ____-____-____ OP<br>9 DTP/Hib<br>9 DTaP/Hib | ____-____-____ OP<br>9 DTP/Hib<br>9 DTaP/Hib | ____-____-____ OP<br>9 DTP/Hib<br>9 DTaP/Hib | ____-____-____ OP<br>9 DTP/Hib<br>9 DTaP/Hib | ____-____-____ OP<br>9 DTP/Hib<br>9 DTaP/Hib |
| Hib  | ____-____-____ OP                            | ____-____-____ OP                            | ____-____-____ OP                            | ____-____-____ OP                            | ____-____-____ OP                            |
| Hepatitis B<br>(enter date or check box)                 | ____-____-____ OP<br>9 Administered at birth | ____-____-____ OP                            | ____-____-____ OP                            | ____-____-____ OP                            | ____-____-____ OP                            |
| Polio (OPV or IPV)<br>(check one box per date)           | ____-____-____ OP<br>9 OPV 9 IPV             | ____-____-____ OP<br>9 OPV 9 IPV             | ____-____-____ OP<br>9 OPV 9 IPV             | ____-____-____ OP<br>9 OPV 9 IPV             | ____-____-____ OP<br>9 OPV 9 IPV             |
| MMR  | ____-____-____ OP                            | ____-____-____ OP                            | ____-____-____ OP                            | ____-____-____ OP                            | ____-____-____ OP                            |
| Measles only   | ____-____-____ OP                            | ____-____-____ OP                            | ____-____-____ OP                            | ____-____-____ OP                            | ____-____-____ OP                            |
| Varicella  | ____-____-____ OP                            | ____-____-____ OP                            | ____-____-____ OP                            | ____-____-____ OP                            | ____-____-____ OP                            |
| Other Vaccines (Specify)                                 | ____-____-____ OP                            | ____-____-____ OP                            | ____-____-____ OP                            | ____-____-____ OP                            | ____-____-____ OP                            |



3. What was the date of this child's first visit for any reason to this place of practice?

\_\_\_\_ - \_\_\_\_ - \_\_\_\_ or 8 G Don't Know  
mm dd yyyy

4. What was the date of this child's most recent visit for any reason to this place of practice?

\_\_\_\_ - \_\_\_\_ - \_\_\_\_ or 8 G Don't Know  
mm dd yyyy

5. Which types of care does this facility routinely provide? (Check all that apply.)

- 1 G a. Comprehensive well-child care (examination, anticipatory guidance, screening)
- 2 G b. Acute illness care
- 3 G c. Follow-up visits
- 4 G d. After-hours telephone coverage
- 5 G e. WIC Program/services
- 6 G f. Other (Describe:)

6. Which of the following best describes this facility? (Check only one box, representing the most specific description.)

- 1 G a. Federally-qualified health center, including community/migrant/rural/ Indian health center
- 2 G b. Hospital-based clinic, including university clinic and residency teaching practice
- 3 G c. Private practice, including solo, group practice or HMO
- 4 G d. Public health department-operated clinic
- 5 G e. Military health care facility
- 6 G f. Other (Describe:)

7. Is this facility a Vaccines for Children provider?

- 1 G a. Yes
- 2 G b. No
- 3 G c. Unknown

8a. Was this facility ever this child's medical home for primary care? (**Medical home:** the place where care is delivered or directed by practitioners known to the child and family, who are able to manage or facilitate essentially all aspects of pediatric care.)

- 1 G a. Yes (Go to question 8b.)
- 2 G b. No (Go to item 9.)
- 3 G c. Unknown (Go to item 9.)

8b. If Yes, what specialty is (was) this child's primary care provider?

- 1 G a. Pediatrician
- 2 G b. Family Physician
- 3 G c. General practitioner
- 4 G d. Other (Describe) \_\_\_\_\_

9. Name of person completing questionnaire: (print) \_\_\_\_\_

Phone: ( \_\_\_\_\_ ) \_\_\_\_\_ Signature: \_\_\_\_\_

10. According to your records, what is this child's date of birth? \_\_\_\_ - \_\_\_\_ - \_\_\_\_ or 8 G Don't know  
mm dd yyyy

11. According to your records, did this child ever use another last name (excluding names prior to adoption)?

- 1 G Yes [Specify name(s):] \_\_\_\_\_
- 2 G No

**INSTRUCTIONS:** If you know of other providers that may have immunization records for this child, please continue with item 12. Otherwise, return this questionnaire to CDC. Call 1-877-652-1244 (toll-free) with any questions. Thank you.

12. Please enter below the names, addresses and telephone numbers of other providers who may have an immunization record for this child, and the name and address for any provider of immunizations with OP circled in item 2.

|  |  |
|--|--|
| (1) _____<br>_____<br>_____<br><br>( _____ ) _____ | (2) _____<br>_____<br>_____<br><br>( _____ ) _____ |
|--|--|

**APPENDIX C**  
**ESTIMATES OF VACCINATION COVERAGE AMONG CHILDREN**  
**AGED 12-18 MONTHS**

**Weighted Best Value Estimates of Vaccination Coverage among Children Aged 12-18 Months  
(n=497), 1998 NHIS/NIPRCS**

| Vaccine/<br>Series | Percent of children receiving number of doses of vaccines |      |         |      |         |      |         |      |         |      | Total        |
|--------------------|---|------|---------|------|---------|------|---------|------|---------|------|--------------|
|                    | None  |      | 1       |      | 2       |      | 3       |      | 4+      |      |              |
|                    | Est (%)   | S.E. | Est (%) | S.E. | Est (%) | S.E. | Est (%) | S.E. | Est (%) | S.E. |              |
| <b>DTP</b>         | -   | -    | 2.0     | 0.8  | 4.5     | 1.0  | 62.1    | 2.3  | 31.4    | 2.4  | <b>100.0</b> |
| <b>Polio</b>       | -   | -    | 1.8     | 0.7  | 31.6    | 2.5  | 66.6*   | 2.5  | -       | -    | <b>100.0</b> |
| <b>MCV</b>         | 35.3  | 2.5  | 64.7*   | 2.5  | -       | -    | -       | -    | -       | -    | <b>100.0</b> |
| <b>Hib</b>         | -   | -    | 3.3     | 0.8  | 6.6     | 1.5  | 90.1*   | 1.7  | -       | -    | <b>100.0</b> |
| <b>HepB</b>        | 1.9   | 0.8  | 1.4     | 0.5  | 12.1    | 1.8  | 84.6*   | 1.7  | -       | -    | <b>100.0</b> |

Note: A dash in the cell means the sample contained no children in this category.

\*This number may include children who have more than the recommended number of doses (i.e., more than 1 MCV or varicella vaccination, or more than 3 polio, Hib, or Hep B vaccinations.)

**APPENDIX D**  
**WEIGHTING CLASSES AND CALCULATIONS FOR**  
**PROVIDER-ADJUSTED ESTIMATES**

Provider-adjusted estimates  
Original Data + NRFUS  
Children 19-35 months old  
Weighted(weight -WTFA\_IM)  
DTP

|                  | Number of<br>Doses Reported<br>By Household | Without<br>Provider<br>Data | Total With<br>Provider<br>Data | Up_to_<br>date | Percent | Total   | Final<br>Provider<br>adjusted<br>up-to-date | Final<br>Provider<br>adjusted<br>up-to-<br>date(%) |
|------------------|---|-----------------------------|--------------------------------|----------------|---------|---------|---|--|
| Shot Card, 4+    |   | 554323                      | 781124                         | 717454         | 91.85   | 1335447 | 1226594                                     |  |
| 3                |   | 207979                      | 222407                         | 158752         | 71.38   | 430386  | 307205                                      |  |
| 2                |   | 44689                       | 59425                          | 41005          | 69.00   | 104114  | 71842                                       |  |
| 1                |   | 32096                       | 19124                          | 16909          | 88.42   | 51220   | 45288                                       |  |
| 0                |   | 5849                        | 4098                           | 0              | 0.00    | 9947    | 0   |  |
| No Shot Card, 4+ |   | 50537                       | 41724                          | 40033          | 95.95   | 92261   | 88522                                       |  |
| 3                |   | 98617                       | 74109                          | 58459          | 78.88   | 172726  | 136246                                      |  |
| 2                |   | 47485                       | 37472                          | 34416          | 91.84   | 84957   | 78025                                       |  |
| 1                |   | 23614                       | 28516                          | 16484          | 57.81   | 52130   | 30136                                       |  |
| 0                |   | 82598                       | 37235                          | 32531          | 87.37   | 119833  | 104698                                      |  |
| All              |   | 1183847                     | 1185159                        | 1024153        | 86.41   | 2369006 | 2047058                                     |  |
| DK/Missing       |   | 365427                      | 270517                         | 215101         | 79.51   | 635944  | 505639                                      |  |
| Total            |   | 2697061                     | 2760910                        | 2355297        | 85.31   | 5457971 | 4641272                                     | 85.04  |

Provider-adjusted estimates  
Original Data + NRFUS  
Children 19-35 months old  
Weighted(weight -WTFA\_IM)  
DTP3

|                  | Number of<br>Doses Reported<br>By Household | Without<br>Provider<br>Data | Total With<br>Provider<br>Data | Up_to_<br>date | Percent | Total   | Final<br>Provider<br>adjusted<br>up-to-date | Final<br>Provider<br>adjusted<br>up-to-<br>date(%) |
|------------------|---|-----------------------------|--------------------------------|----------------|---------|---------|---|--|
| Shot Card, 3+    |   | 762302                      | 1003531                        | 973426         | 97.00   | 1765833 | 1712860                                     |  |
| 2                |   | 44689                       | 59425                          | 50518          | 85.01   | 104114  | 88509                                       |  |
| 1                |   | 32096                       | 19124                          | 17994          | 94.09   | 51220   | 48194                                       |  |
| 0                |   | 5849                        | 4098                           | 4098           | 100.00  | 9947    | 9947  |  |
| No Shot Card, 3+ |   | 149154                      | 115833                         | 112159         | 96.83   | 264987  | 256582                                      |  |
| 2                |   | 47485                       | 37472                          | 37472          | 100.00  | 84957   | 84957                                       |  |
| 1                |   | 23614                       | 28516                          | 26423          | 92.66   | 52130   | 48304                                       |  |
| 0                |   | 82598                       | 37235                          | 37235          | 100.00  | 119833  | 119833                                      |  |
| All              |   | 1183847                     | 1185159                        | 1141610        | 96.33   | 2369006 | 2281956                                     |  |
| DK/Missing       |   | 365427                      | 270517                         | 252753         | 93.43   | 635944  | 594184                                      |  |
| Total            |   | 2697061                     | 2760910                        | 2653688        | 96.12   | 5457971 | 5245326                                     | 96.10  |

Provider-adjusted estimates  
Original Data + NRFUS  
Children 19-35 months old  
Weighted(weight -WTFA\_IM)  
POLIO

| Number of Doses Reported By Household | Without Provider Data | Total With Provider Data | Up_to_date | Percent | Total   | Final Provider adjusted up-to-date | Final Provider adjusted up-to-date(%) |
|---------------------------------------|-----------------------|--------------------------|------------|---------|---------|------------------------------------|---------------------------------------|
| Shot Card, 3+                         | 748655                | 936664                   | 866605     | 92.52   | 1685319 | 1559257                            |                                       |
| 2                                     | 44854                 | 87854                    | 58772      | 66.90   | 132708  | 88782                              |                                       |
| 1                                     | 40637                 | 38654                    | 35447      | 91.70   | 79291   | 72710                              |                                       |
| 0                                     | 10790                 | 23006                    | 18908      | 82.19   | 33796   | 27777                              |                                       |
| No Shot Card, 3+                      | 103386                | 78769                    | 78769      | 100.00  | 182155  | 182155                             |                                       |
| 2                                     | 59058                 | 56973                    | 52815      | 92.70   | 116031  | 107561                             |                                       |
| 1                                     | 44433                 | 45835                    | 36693      | 80.05   | 90268   | 72260                              |                                       |
| 0                                     | 97641                 | 52371                    | 49728      | 94.95   | 150012  | 142436                             |                                       |
| All                                   | 1177961               | 1180653                  | 1087406    | 92.10   | 2358614 | 2172283                            |                                       |
| DK/Missing                            | 369646                | 260131                   | 238392     | 91.64   | 629777  | 577128                             |                                       |
| Total                                 | 2697061               | 2760910                  | 2523535    | 91.40   | 5457971 | 5002349                            | 91.65                                 |

Provider-adjusted estimates  
Original Data + NRFUS  
Children 19-35 months old  
Weighted(weight -WTFA\_IM)  
MCV

| Number of Doses Reported By Household | Without Provider Data | Total With Provider Data | Up_to_date | Percent | Total   | Final Provider adjusted up-to-date | Final Provider adjusted up-to-date(%) |
|---------------------------------------|-----------------------|--------------------------|------------|---------|---------|------------------------------------|---------------------------------------|
| Shot Card, 1+                         | 755383                | 1016229                  | 968533     | 95.31   | 1771612 | 1688463                            |                                       |
| 0                                     | 89553                 | 69949                    | 41291      | 59.03   | 159502  | 94154                              |                                       |
| No Shot Card, 1+                      | 225286                | 175104                   | 169910     | 97.03   | 400390  | 388513                             |                                       |
| 0                                     | 157173                | 88736                    | 82596      | 93.08   | 245909  | 228894                             |                                       |
| All                                   | 1090502               | 1116107                  | 1051192    | 94.18   | 2206609 | 2078268                            |                                       |
| DK/Missing                            | 379164                | 294785                   | 260374     | 88.33   | 673949  | 595277                             |                                       |
| Total                                 | 2697061               | 2760910                  | 2573896    | 93.23   | 5457971 | 5073569                            | 92.96                                 |

Provider-adjusted estimates  
Original Data + NRFUS  
Children 19-35 months old  
Weighted(weight -WTFA\_IM)  
HIB

|                  | Number of<br>Doses Reported<br>By Household | Without<br>Provider<br>Data | Total With<br>Provider<br>Data | Up_to_<br>date | Percent | Total   | Final<br>Provider<br>adjusted<br>up-to-date | Final<br>Provider<br>adjusted<br>up-to-<br>date(%) |
|------------------|---|-----------------------------|--------------------------------|----------------|---------|---------|---|--|
| Shot Card, 3+    |   | 619122                      | 818551                         | 781680         | 95.50   | 1437673 | 1372914                                     |  |
| 2                |   | 63692                       | 91088                          | 78728          | 86.43   | 154780  | 133777                                      |  |
| 1                |   | 100835                      | 80551                          | 69789          | 86.64   | 181386  | 157152                                      |  |
| 0                |   | 61287                       | 95988                          | 94686          | 98.64   | 157275  | 155142                                      |  |
| No Shot Card, 3+ |   | 87904                       | 59404                          | 59404          | 100.00  | 147308  | 147308                                      |  |
| 2                |   | 38265                       | 21361                          | 17064          | 79.88   | 59626   | 47632                                       |  |
| 1                |   | 46062                       | 49865                          | 48174          | 96.61   | 95927   | 92674                                       |  |
| 0                |   | 198167                      | 117262                         | 113637         | 96.91   | 315429  | 305678                                      |  |
| All              |   | 1017229                     | 1072111                        | 1019708        | 95.11   | 2089340 | 1987217                                     |  |
| DK/Missing       |   | 464498                      | 354729                         | 316040         | 89.09   | 819227  | 729877                                      |  |
| Total            |   | 2697061                     | 2760910                        | 2598910        | 94.13   | 5457971 | 5129371                                     | 93.98  |

Provider-adjusted estimates  
Original Data + NRFUS  
Children 19-35 months old  
Weighted(weight -WTFA\_IM)  
HEP B

|                  | Number of<br>Doses Reported<br>By Household | Without<br>Provider<br>Data | Total With<br>Provider<br>Data | Up_to_<br>date | Percent | Total   | Final<br>Provider<br>adjusted<br>up-to-date | Final<br>Provider<br>adjusted<br>up-to-<br>date(%) |
|------------------|---|-----------------------------|--------------------------------|----------------|---------|---------|---|--|
| Shot Card, 3+    |   | 661771                      | 927801                         | 858721         | 92.55   | 1589572 | 1471219                                     |  |
| 2                |   | 81035                       | 86819                          | 66039          | 76.07   | 167854  | 127678                                      |  |
| 1                |   | 45956                       | 29496                          | 25405          | 86.13   | 75452   | 64987                                       |  |
| 0                |   | 56174                       | 42062                          | 23480          | 55.82   | 98236   | 54838                                       |  |
| No Shot Card, 3+ |   | 88645                       | 93918                          | 93918          | 100.00  | 182563  | 182563                                      |  |
| 2                |   | 53446                       | 40657                          | 40657          | 100.00  | 94103   | 94103                                       |  |
| 1                |   | 58020                       | 58602                          | 42039          | 71.74   | 116622  | 83660                                       |  |
| 0                |   | 210793                      | 135167                         | 127346         | 94.21   | 345960  | 325942                                      |  |
| All              |   | 936619                      | 990284                         | 879074         | 88.77   | 1926903 | 1710510                                     |  |
| DK/Missing       |   | 504602                      | 356104                         | 310382         | 87.16   | 860706  | 750196                                      |  |
| Total            |   | 2697061                     | 2760910                        | 2467061        | 89.36   | 5457971 | 4865696                                     | 89.15  |

Provider-adjusted estimates  
 Original Data + NRFUS  
 Children 19-35 months old  
 Weighted(weight -WTFA\_IM)  
 4:3:1

| Number of<br>Doses Reported<br>By Household | Without<br>Provider<br>Data | Total With<br>Provider<br>Data | Up_to_<br>date | Percent | Total   | Final<br>Provider<br>adjusted<br>up-to-date | Final<br>Provider<br>adjusted<br>up-to-<br>date(%) |
|---|-----------------------------|--------------------------------|----------------|---------|---------|---|--|
| Shot Card, Up-to-Date                       | 524980                      | 712999                         | 615462         | 86.32   | 1237979 | 1068626                                     |  |
| Not Up-to-Date                              | 319956                      | 373179                         | 267973         | 71.81   | 693135  | 497728                                      |  |
| No Shot Card, Up-to-Date, All               | 1096101                     | 1116443                        | 934484         | 83.70   | 2212544 | 1851941                                     |  |
| Up-to-Date, Number                          | 33102                       | 19608                          | 19608          | 100.00  | 52710   | 52710                                       |  |
| Not Up-to Date                              | 325788                      | 235712                         | 179123         | 75.99   | 561500  | 426697                                      |  |
| DK/Missing                                  | 397134                      | 302969                         | 235596         | 77.76   | 700103  | 544417                                      |  |
| Total                                       | 2697061                     | 2760910                        | 2252246        | 81.58   | 5457971 | 4442119                                     | 81.39  |

Provider-adjusted estimates  
 Original Data + NRFUS  
 Children 19-35 months old  
 Weighted(weight -WTFA\_IM)  
 4:3:1:3

| Number of<br>Doses Reported<br>By Household | Without<br>Provider<br>Data | Total With<br>Provider<br>Data | Up_to_<br>date | Percent | Total   | Final<br>Provider<br>adjusted<br>up-to-date | Final<br>Provider<br>adjusted<br>up-to-<br>date(%) |
|---|-----------------------------|--------------------------------|----------------|---------|---------|---|--|
| Shot Card, Up-to-Date                       | 455346                      | 600745                         | 504853         | 84.04   | 1056091 | 887516                                      |  |
| Not Up-to-Date                              | 389590                      | 485433                         | 368219         | 75.85   | 875023  | 663738                                      |  |
| No Shot Card, Up-to-Date, All               | 954920                      | 1006821                        | 839034         | 83.33   | 1961741 | 1634816                                     |  |
| Up-to-Date, Number                          | 26223                       | 19608                          | 19608          | 100.00  | 45831   | 45831                                       |  |
| Not Up-to-Date                              | 423595                      | 305724                         | 237504         | 77.69   | 729319  | 566577                                      |  |
| DK/Missing                                  | 447387                      | 342579                         | 255458         | 74.57   | 789966  | 589070                                      |  |
| Total                                       | 2697061                     | 2760910                        | 2224676        | 80.58   | 5457971 | 4387548                                     | 80.39  |



Provider-adjusted estimates  
 Original Data + NRFUS  
 Children 19-35 months old  
 Weighted(weight -WTFA\_IM)  
 4:3:1:3:3

|                                  | Number of<br>Doses Reported<br>By Household | Without<br>Provider<br>Data | Total With<br>Provider<br>Data | Up_to_<br>date | Percent | Total   | Final<br>Provider<br>adjusted<br>up-to-date | Final<br>Provider<br>adjusted<br>up-to-<br>date(%) |
|----------------------------------|---|-----------------------------|--------------------------------|----------------|---------|---------|---|--|
| Shot Card, Up-to-Date            |   | 400458                      | 526078                         | 433456         | 82.39   | 926536  | 763409                                      |  |
| Not Up-to-Date                   |   | 444478                      | 560100                         | 389124         | 69.47   | 1004578 | 697921                                      |  |
| No Shot Card, Up-to-Date, Number |   | 830162                      | 906860                         | 694400         | 76.57   | 1737022 | 1330071                                     |  |
| Up-to-Date, All                  |   | 13515                       | 17296                          | 17296          | 100.00  | 30811   | 30811                                       |  |
| Not Up-to-Date                   |   | 511015                      | 386531                         | 290224         | 75.08   | 897546  | 673916                                      |  |
| DK/Missing                       |   | 497433                      | 364045                         | 265950         | 73.05   | 861478  | 629345                                      |  |
| Total                            |   | 2697061                     | 2760910                        | 2090450        | 75.72   | 5457971 | 4125473                                     | 75.59  |

**APPENDIX E**  
**EXAMPLE OF A SAS PROGRAM THAT CALLS SUDAAN FOR**  
**CALCULATING STANDARD ERRORS**

```
*****
SE_NIPR98.SAS
```

THIS PROGRAM WILL PRODUCE ESTIMATES AND STANDARD ERRORS FOR BEST VALUE UP-TO-DATE STATUS USING SAS- CALLABLE SUDAAN.

SUDAAN NOTES:

1. ALL VARIABLES USED MUST BE NUMERIC.
2. VARIABLES IN THE SUBGROUP STATEMENT MUST HAVE VALUES 1,2,...K WHERE K IS THE NUMBER OF LEVELS FOR EACH VARIABLE.
3. DATA MUST BE SORTED ACCORDING TO THE SAMPLE DESIGN VARIABLES (STRATUM AND PRIMARY SAMPLING UNIT), SPECIFIED IN THE NEST STATEMENT.

```
*****,
```

```
title 'SUD_NIPR.SAS';
```

```
options nofmterr ls=80;
```

```
libname data v612 'c:\nprpuf98'; **** SPECIFY PATH TO SAS DATA SET;
```

```
proc format ;
  value utdf 1='UP-TO-DATE'
            2='NOT UP-TO-DATE';
run;
```

```
data o;
set data.nprpuf98                /** SPECIFY NAME OF THE SAS DATA SET **/
  (where=(19<=icagemr<=35 and bestval=1)); ** AGE 19-35 MO **
  ** AND HAVE BEST VALUE **;
run;
```

```
/** AUTOMATICALLY COLLAPSES STRATA TO HAVE AT LEAST TWO PSU PER STRATUM
```

If the original NHIS stratum has 2 PSUs with eligible children, it is retained. If the NHIS stratum contains only one non-empty PSU, it is merged with the last retained stratum. See the list of original and new collapsed strata in the table following this program to collapse the strata manually. \*\*\*\*\*/

```
/** DEFINE UP-TO-DATE STATUS FOR EACH VACCINE AND SERIES ***/
```

```
proc sort nodupkey out=o1(keep=stratum psu);
by stratum psu ;
```

```
data o2(keep=stratum goodstra);
set o1;
by stratum psu ;
retain goodstra 1 ;
```

```
if first.stratum and ^last.stratum then do; /* STRATA WITH 2 PSU */
goodstra=stratum; end;
```

```
if last.stratum and first.stratum then do; /* STRATA WITH ONE PSU */
output; end;
```

```
proc sort nodupkey;
by stratum;
```

```
proc sort data=o;
by stratum;
```

```
data o;
merge o(in=_1) o2(in=_2);
by stratum;
```

```
if _1;
```

```
if _2 then stratum=goodstra;  
format b_u: but: utdf.;
```

```
run;
```

```
proc sort; /* SORT BY NEST VARIABLES */  
by stratum psu;  
run;
```

```
proc crosstab data=o filetype=sas design=wr; /* CALLABLE SUDAAN PROCEDURE */  
weight wt_bv2;  
nest stratum psu/missunit;  
subgroup b_utddtp b_utddt3 b_utdpol b_utdmmr b_utdhib b_utdhib b_utdhep  
b_utd431 butd4313 but43133;  
levels 2 2 2 2 2 2 2 2 2;  
tables b_utddtp b_utddt3 b_utdpol b_utdmmr b_utdhib b_utdhib b_utdhep  
b_utd431 butd4313 but43133 ;  
output / filename=se tablecell=default replace;  
run;
```

COLLAPSED STRATA: Table to show which NHIS strata were collapsed in to new NHIS/NIPRCS strata for analysis

| Stratum with 1 PSU | Stratum Collapsed Into |
|--------------------|------------------------|
| 3                  | 2                      |
| 6                  | 5                      |
| 24                 | 23                     |
| 25                 | 23                     |
| 27                 | 23                     |
| 30                 | 29                     |
| 31                 | 29                     |
| 32                 | 29                     |
| 33                 | 29                     |
| 39                 | 38                     |
| 40                 | 38                     |
| 41                 | 38                     |
| 47                 | 46                     |
| 49                 | 48                     |
| 51                 | 50                     |
| 52                 | 50                     |
| 56                 | 55                     |
| 57                 | 55                     |
| 64                 | 63                     |
| 69                 | 68                     |
| 72                 | 71                     |
| 73                 | 71                     |
| 75                 | 74                     |
| 77                 | 76                     |
| 82                 | 81                     |
| 84                 | 83                     |
| 88                 | 87                     |
| 91                 | 90                     |
| 92                 | 90                     |
| 97                 | 96                     |
| 100                | 99                     |
| 107                | 106                    |
| 111                | 110                    |
| 117                | 116                    |
| 122                | 121                    |
| 125                | 124                    |
| 126                | 124                    |
| 129                | 127                    |
| 137                | 136                    |
| 138                | 136                    |
| 140                | 139                    |
| 141                | 139                    |
| 144                | 143                    |
| 155                | 154                    |
| 159                | 158                    |
| 163                | 162                    |
| 165                | 164                    |
| 166                | 164                    |
| 174                | 173                    |
| 176                | 175                    |
| 177                | 175                    |
| 178                | 175                    |
| 179                | 175                    |
| 180                | 175                    |
| 182                | 181                    |
| 186                | 185                    |
| 187                | 185                    |

|     |     |
|-----|-----|
| 188 | 185 |
| 189 | 185 |
| 194 | 193 |
| 197 | 196 |
| 198 | 196 |
| 201 | 200 |
| 206 | 205 |
| 207 | 205 |
| 210 | 208 |
| 211 | 208 |
| 214 | 213 |
| 216 | 215 |
| 219 | 218 |
| 221 | 220 |
| 222 | 220 |
| 223 | 220 |
| 224 | 220 |
| 226 | 225 |
| 230 | 229 |
| 236 | 235 |
| 237 | 235 |
| 241 | 240 |
| 242 | 240 |
| 243 | 240 |
| 246 | 245 |
| 258 | 257 |
| 263 | 262 |
| 264 | 262 |
| 267 | 266 |
| 269 | 268 |
| 272 | 271 |
| 274 | 273 |
| 275 | 273 |
| 277 | 276 |
| 279 | 278 |
| 281 | 278 |
| 282 | 278 |
| 283 | 278 |
| 297 | 294 |
| 298 | 294 |
| 301 | 300 |
| 302 | 300 |
| 305 | 304 |
| 307 | 306 |
| 308 | 306 |
| 309 | 306 |
| 312 | 310 |
| 314 | 313 |
| 315 | 313 |
| 316 | 313 |
| 318 | 317 |
| 321 | 320 |
| 323 | 320 |
| 326 | 325 |
| 329 | 328 |
| 330 | 328 |
| 331 | 328 |
| 332 | 328 |
| 335 | 334 |
| 336 | 334 |

---

**APPENDIX F**  
**UNWEIGHTED DISTRIBUTION OF CHILDREN AGED 12-35 MONTHS IN THE**  
**1998 NHIS/NIPRCS BY SELECTED DEMOGRAPHIC CHARACTERISTICS**

UNWEIGHTED DISTRIBUTION OF CHILDREN AGED 12-35 MONTHS IN THE 1998 NHIS/NIPCRS BY SELECTED DEMOGRAPHICS CHARACTERISTICS

| Demographic Characteristic     | Immunization Supplement<br>(n %) | Shot Card Users<br>(n %) | No Shot Card<br>(n %) | With Provider Data<br>(n %) | No Provider Data<br>(n %) |
|--------------------------------|----------------------------------|--------------------------|-----------------------|-----------------------------|---------------------------|
| <b>Total</b>                   | <b>2966</b>                      | <b>1129</b>              | <b>1837</b>           | <b>1443</b>                 | <b>1523</b>               |
| <b>Age of Child</b>            |                                  |                          |                       |                             |                           |
| 1. 12-18                       | 894 30.1                         | 351 31.1                 | 543 29.6              | 418 29.0                    | 476 31.3                  |
| 2. 19-24                       | 712 24.0                         | 265 23.5                 | 447 24.3              | 362 25.1                    | 350 23.0                  |
| 3. 25-29                       | 575 19.4                         | 225 19.9                 | 350 19.1              | 292 20.2                    | 283 18.6                  |
| 4. 30-35                       | 785 26.5                         | 288 25.5                 | 497 27.1              | 371 25.7                    | 414 27.2                  |
| <b>Gender of Child</b>         |                                  |                          |                       |                             |                           |
| 1. Male                        | 1478 49.8                        | 564 50.0                 | 914 49.8              | 720 49.9                    | 758 49.8                  |
| 2. Female                      | 1488 50.2                        | 565 50.0                 | 923 50.2              | 723 50.1                    | 765 50.2                  |
| <b>Race/Ethnicity of Child</b> |                                  |                          |                       |                             |                           |
| 1. Hispanic                    | 973 32.8                         | 442 39.1                 | 531 28.9              | 397 27.5                    | 576 37.8                  |
| 2. Black, nonHispanic          | 467 15.7                         | 134 11.9                 | 333 18.1              | 180 12.5                    | 287 18.8                  |
| 3. White, nonHispanic          | 1406 47.4                        | 521 46.1                 | 885 48.2              | 811 56.2                    | 595 39.1                  |
| 4. Other, nonHispanic          | 120 4.0                          | 32 2.8                   | 88 4.8                | 55 3.8                      | 65 4.3                    |
| <b>Poverty Status</b>          |                                  |                          |                       |                             |                           |
| 1. Below                       | 618 20.8                         | 277 24.5                 | 341 18.6              | 241 16.7                    | 377 24.8                  |
| 2. Above                       | 1788 60.3                        | 706 62.5                 | 1082 58.9             | 1004 69.6                   | 784 51.5                  |
| 3. Unknown                     | 560 18.9                         | 146 12.9                 | 414 22.5              | 198 13.7                    | 362 23.8                  |
| <b>Income</b>                  |                                  |                          |                       |                             |                           |
| 1. \$20,000 and above          | 1966 66.3                        | 717 63.5                 | 1249 68.0             | 1070 74.2                   | 896 58.8                  |
| 2. Less than \$20,000          | 868 29.3                         | 385 34.1                 | 483 26.3              | 338 23.4                    | 530 34.8                  |
| 3. Unknown                     | 132 4.5                          | 27 2.4                   | 105 5.7               | 35 2.4                      | 97 6.4                    |
| <b>Education of Mother</b>     |                                  |                          |                       |                             |                           |
| 1. Less than High School       | 681 23.9                         | 288 26.3                 | 393 22.4              | 249 17.9                    | 432 29.8                  |
| 2. High School                 | 752 26.4                         | 282 25.8                 | 470 26.8              | 352 25.3                    | 400 27.6                  |
| 3. Some College                | 817 28.7                         | 318 29.1                 | 499 28.5              | 448 32.2                    | 369 25.4                  |
| 4. College Graduate            | 564 19.8                         | 200 18.3                 | 364 20.8              | 338 24.3                    | 226 15.6                  |
| 5. Unknown                     | 30 1.1                           | 5 0.5                    | 25 1.4                | 6 0.4                       | 24 1.7                    |



| Demographic Characteristic    | Immunization Supplement |      | Shot Card Users |      | No Shot Card |      | With Provider Data |      | No Provider Data |      |
|-------------------------------|-------------------------|------|-----------------|------|--------------|------|--------------------|------|------------------|------|
|                               | (n                      | %)   | (n              | %)   | (n           | %)   | (n                 | %)   | (n               | %)   |
| <b>Census Region</b>          |                         |      |                 |      |              |      |                    |      |                  |      |
| 1. Northeast                  | 509                     | 17.2 | 160             | 14.2 | 349          | 19.0 | 259                | 17.9 | 250              | 16.4 |
| 2. Midwest                    | 640                     | 21.6 | 226             | 20.0 | 414          | 22.5 | 360                | 24.9 | 280              | 18.4 |
| 3. South                      | 1003                    | 33.8 | 389             | 34.5 | 614          | 33.4 | 489                | 33.9 | 514              | 33.7 |
| 4. West                       | 814                     | 27.4 | 354             | 31.4 | 460          | 25.0 | 335                | 23.2 | 479              | 31.5 |
| <b>MSA</b>                    |                         |      |                 |      |              |      |                    |      |                  |      |
| 1. 5,000,000 or more          | 440                     | 14.8 | 159             | 14.1 | 281          | 15.3 | 183                | 12.7 | 257              | 16.9 |
| 2. 2,500,000 - 4,999,999      | 391                     | 13.2 | 140             | 12.4 | 251          | 13.7 | 179                | 12.4 | 212              | 13.9 |
| 3. 1,000,000 - 2,499,999      | 680                     | 22.9 | 246             | 21.8 | 434          | 23.6 | 319                | 22.1 | 361              | 23.7 |
| 4. 500,000 - 999,999          | 368                     | 12.4 | 137             | 12.1 | 231          | 12.6 | 175                | 12.1 | 193              | 12.7 |
| 5. 250,000 - 499,999          | 330                     | 11.1 | 129             | 11.4 | 201          | 10.9 | 166                | 11.5 | 164              | 10.8 |
| 6. Under 250,000              | 238                     | 8.0  | 95              | 8.4  | 143          | 7.8  | 123                | 8.5  | 115              | 7.6  |
| 7. Non-MSA                    | 519                     | 17.5 | 223             | 19.8 | 296          | 16.1 | 298                | 20.7 | 221              | 14.5 |
| <b>RACE</b>                   |                         |      |                 |      |              |      |                    |      |                  |      |
| 1. White                      | 2117                    | 71.4 | 847             | 75.0 | 1270         | 69.1 | 1104               | 76.5 | 1013             | 66.5 |
| 2. Black                      | 467                     | 15.7 | 130             | 11.5 | 337          | 18.3 | 180                | 12.5 | 287              | 18.8 |
| 3. AIAN                       | 31                      | 1.0  | 9               | 0.8  | 22           | 1.2  | 11                 | 0.8  | 20               | 1.3  |
| 4. API                        | 87                      | 2.9  | 28              | 2.5  | 59           | 3.2  | 41                 | 2.8  | 46               | 3.0  |
| 5. Other                      | 179                     | 6.0  | 87              | 7.7  | 92           | 5.0  | 71                 | 4.9  | 108              | 7.1  |
| 6. Multiple race              | 72                      | 2.4  | 23              | 2.0  | 49           | 2.7  | 32                 | 2.2  | 40               | 2.6  |
| 7. Unknown                    | 13                      | 0.4  | 5               | 0.4  | 8            | 0.4  | 4                  | 0.3  | 9                | 0.6  |
| <b>HISPAN_P</b>               |                         |      |                 |      |              |      |                    |      |                  |      |
| 0. Multiple Hispanic          | 37                      | 1.2  | 16              | 1.4  | 21           | 1.1  | 13                 | 0.9  | 24               | 1.6  |
| 1. Puerto Rican               | 82                      | 2.8  | 27              | 2.4  | 55           | 3.0  | 31                 | 2.1  | 51               | 3.3  |
| 3. Mexican-Mexicano           | 128                     | 4.3  | 66              | 5.8  | 62           | 3.4  | 43                 | 3.0  | 85               | 5.6  |
| 4. Mexican-American           | 431                     | 14.5 | 204             | 18.1 | 227          | 12.4 | 180                | 12.5 | 251              | 16.5 |
| 5. Cuban/Cuban-American       | 19                      | 0.6  | 5               | 0.4  | 14           | 0.8  | 10                 | 0.7  | 9                | 0.6  |
| 6. Other Latin American       | 72                      | 2.4  | 26              | 2.3  | 46           | 2.5  | 28                 | 1.9  | 44               | 2.9  |
| 7. Other Spanish              | 9                       | 0.3  | 4               | 0.4  | 5            | 0.3  | 7                  | 0.5  | 2                | 0.1  |
| 8. Hispanic/Spanish, non-spec | 191                     | 6.4  | 92              | 8.1  | 99           | 5.4  | 85                 | 5.9  | 106              | 7.0  |
| 9-11. Hispanic/Spanish, unk   | 4                       | 0.1  | 2               | 0.2  | 2            | 0.1  | 0                  | 0.0  | 4                | 0.3  |
| 12. Non Hispanic/Spanish Orig | 1993                    | 67.2 | 687             | 60.9 | 1306         | 71.1 | 1046               | 72.5 | 947              | 62.2 |

**APPENDIX G**  
**WEIGHTED DISTRIBUTION OF CHILDREN AGED 12-35 MONTHS IN THE**  
**1998 NHIS/NIPRCS BY SELECTED DEMOGRAPHIC CHARACTERISTICS**

WEIGHTED DISTRIBUTION OF CHILDREN AGED 12-35 MONTHS IN THE 1998 NHIS/NIPRCS BY SELECTED DEMOGRAPHIC CHARACTERISTICS  
 WEIGHT = WTFA\_IM

| Demographic Characteristic     | Immunization Supplement (n %) |      | Shot Card Users (n %) |      | No Shot Card (n %) |      | With Provider Data (n %) |      | No Provider Data (n %) |      |
|--------------------------------|-------------------------------|------|-----------------------|------|--------------------|------|--------------------------|------|------------------------|------|
| <b>Total</b>                   | <b>7819081</b>                |      | <b>2856590</b>        |      | <b>4962491</b>     |      | <b>3988076</b>           |      | <b>3831005</b>         |      |
| <b>Age of Child</b>            |                               |      |                       |      |                    |      |                          |      |                        |      |
| 1. 12-18                       | 2361110                       | 30.2 | 925476                | 32.4 | 1435634            | 28.9 | 1162856                  | 29.2 | 1198254                | 31.3 |
| 2. 19-24                       | 1911006                       | 24.4 | 660605                | 23.1 | 1250401            | 25.2 | 1028140                  | 25.8 | 882866                 | 23.0 |
| 3. 25-29                       | 1479575                       | 18.9 | 546763                | 19.1 | 932812             | 18.8 | 762990                   | 19.1 | 716585                 | 18.7 |
| 4. 30-35                       | 2067390                       | 26.4 | 723746                | 25.3 | 1343644            | 27.1 | 1034090                  | 25.9 | 1033300                | 27.0 |
| <b>Gender of Child</b>         |                               |      |                       |      |                    |      |                          |      |                        |      |
| 1. Male                        | 4001034                       | 51.2 | 1478621               | 51.8 | 2522413            | 50.8 | 2052683                  | 51.5 | 1948351                | 50.9 |
| 2. Female                      | 3818047                       | 48.8 | 1377969               | 48.2 | 2440078            | 49.2 | 1935393                  | 48.5 | 1882654                | 49.1 |
| <b>Race/Ethnicity of Child</b> |                               |      |                       |      |                    |      |                          |      |                        |      |
| 1. Hispanic                    | 1425138                       | 18.2 | 614073                | 21.5 | 811065             | 16.3 | 577566                   | 14.5 | 847572                 | 22.1 |
| 2. Black, nonHispanic          | 1107459                       | 14.2 | 324442                | 11.4 | 783017             | 15.8 | 435593                   | 10.9 | 671866                 | 17.5 |
| 3. White, nonHispanic          | 4892954                       | 62.6 | 1820810               | 63.7 | 3072144            | 61.9 | 2796602                  | 70.1 | 2096352                | 54.7 |
| 4. Other, nonHispanic          | 393530                        | 5.0  | 97265                 | 3.4  | 296265             | 6.0  | 178315                   | 4.5  | 215215                 | 5.6  |
| <b>Poverty Status</b>          |                               |      |                       |      |                    |      |                          |      |                        |      |
| 1. Below                       | 1319515                       | 16.9 | 554459                | 19.4 | 765056             | 15.4 | 489892                   | 12.3 | 829623                 | 21.7 |
| 2. Above                       | 5120887                       | 65.5 | 1990709               | 69.7 | 3130178            | 63.1 | 2991342                  | 75.0 | 2129545                | 55.6 |
| 3. Unknown                     | 1378679                       | 17.6 | 311422                | 10.9 | 1067257            | 21.5 | 506842                   | 12.7 | 871837                 | 22.8 |
| <b>Income</b>                  |                               |      |                       |      |                    |      |                          |      |                        |      |
| 1. \$20,000 and above          | 5602855                       | 71.7 | 2010466               | 70.4 | 3592389            | 72.4 | 3181473                  | 79.8 | 2421382                | 63.2 |
| 2. Less than \$20,000          | 1895346                       | 24.2 | 787465                | 27.6 | 1107881            | 22.3 | 731145                   | 18.3 | 1164201                | 30.4 |
| 3. Unknown                     | 320880                        | 4.1  | 58659                 | 2.1  | 262221             | 5.3  | 75458                    | 1.9  | 245422                 | 6.4  |
| <b>Education of Mother</b>     |                               |      |                       |      |                    |      |                          |      |                        |      |
| 1. Less than High School       | 1310662                       | 17.4 | 495973                | 17.9 | 814689             | 17.0 | 472552                   | 12.2 | 838110                 | 22.9 |
| 2. High School                 | 2022653                       | 26.8 | 732396                | 26.5 | 1290257            | 27.0 | 991231                   | 25.5 | 1031422                | 28.1 |
| 3. Some College                | 2271132                       | 30.1 | 868064                | 31.4 | 1403068            | 29.3 | 1269459                  | 32.7 | 1001673                | 27.3 |
| 4. College Graduate            | 1867986                       | 24.7 | 661157                | 23.9 | 1206829            | 25.2 | 1130920                  | 29.1 | 737066                 | 20.1 |
| 5. Unknown                     | 75396                         | 1.0  | 9249                  | 0.3  | 66147              | 1.4  | 17618                    | 0.5  | 57778                  | 1.6  |

| Demographic Characteristic |                            | Immunization Supplement<br>(n %) |      | Shot Card Users<br>(n %) |      | No Shot Card<br>(n %) |      | With Provider Data<br>(n %) |      | No Provider Data<br>(n %) |      |
|----------------------------|----------------------------|----------------------------------|------|--------------------------|------|-----------------------|------|-----------------------------|------|---------------------------|------|
| <b>Census Region</b>       |                            |                                  |      |                          |      |                       |      |                             |      |                           |      |
| 1.                         | Northeast                  | 1451555                          | 18.6 | 454378                   | 15.9 | 997177                | 20.1 | 778502                      | 19.5 | 673053                    | 17.6 |
| 2.                         | Midwest                    | 2055753                          | 26.3 | 729544                   | 25.5 | 1326209               | 26.7 | 1153017                     | 28.9 | 902736                    | 23.6 |
| 3.                         | South                      | 2602610                          | 33.3 | 951351                   | 33.3 | 1651259               | 33.3 | 1296721                     | 32.5 | 1305889                   | 34.1 |
| 4.                         | West                       | 1709163                          | 21.9 | 721317                   | 25.3 | 987846                | 19.9 | 759836                      | 19.1 | 949327                    | 24.8 |
| <b>MSA</b>                 |                            |                                  |      |                          |      |                       |      |                             |      |                           |      |
| 1.                         | 5,000,000 or more          | 892784                           | 11.4 | 314123                   | 11.0 | 578661                | 11.7 | 401047                      | 10.1 | 491737                    | 12.8 |
| 2.                         | 2,500,000 - 4,999,999      | 1096380                          | 14.0 | 390505                   | 13.7 | 705875                | 14.2 | 542057                      | 13.6 | 554323                    | 14.5 |
| 3.                         | 1,000,000 - 2,499,999      | 1788403                          | 22.9 | 604376                   | 21.2 | 1184027               | 23.9 | 889436                      | 22.3 | 898967                    | 23.5 |
| 4.                         | 500,000 - 999,999          | 967086                           | 12.4 | 343555                   | 12.0 | 623531                | 12.6 | 482015                      | 12.1 | 485071                    | 12.7 |
| 5.                         | 250,000 - 499,999          | 878730                           | 11.2 | 338293                   | 11.8 | 540437                | 10.9 | 438720                      | 11.0 | 440010                    | 11.5 |
| 6.                         | Under 250,000              | 670397                           | 8.6  | 238002                   | 8.3  | 432395                | 8.7  | 356593                      | 8.9  | 313804                    | 8.2  |
| 7.                         | Non-MSA                    | 1525301                          | 19.5 | 627736                   | 22.0 | 897565                | 18.1 | 878208                      | 22.0 | 647093                    | 16.9 |
| <b>RACE</b>                |                            |                                  |      |                          |      |                       |      |                             |      |                           |      |
| 1.                         | White                      | 5894818                          | 75.4 | 2256302                  | 79.0 | 3638516               | 73.3 | 3212091                     | 80.5 | 2682727                   | 70.0 |
| 2.                         | Black                      | 1100534                          | 14.1 | 314928                   | 11.0 | 785606                | 15.8 | 429496                      | 10.8 | 671038                    | 17.5 |
| 3.                         | AIAN                       | 80965                            | 1.0  | 15743                    | 0.6  | 65222                 | 1.3  | 30600                       | 0.8  | 50365                     | 1.3  |
| 4.                         | API                        | 275097                           | 3.5  | 85102                    | 3.0  | 189995                | 3.8  | 129344                      | 3.2  | 145753                    | 3.8  |
| 5.                         | Other                      | 253701                           | 3.2  | 113359                   | 4.0  | 140342                | 2.8  | 92584                       | 2.3  | 161117                    | 4.2  |
| 6.                         | Multiple race              | 196240                           | 2.5  | 65943                    | 2.3  | 130297                | 2.6  | 89498                       | 2.2  | 106742                    | 2.8  |
| 7.                         | Unknown                    | 17726                            | 0.2  | 5213                     | 0.2  | 12513                 | 0.3  | 4463                        | 0.1  | 13263                     | 0.3  |
| <b>HISPAN_P</b>            |                            |                                  |      |                          |      |                       |      |                             |      |                           |      |
| 0.                         | Multiple Hispanic          | 59949                            | 0.8  | 26744                    | 0.9  | 33205                 | 0.7  | 22154                       | 0.6  | 37795                     | 1.0  |
| 1.                         | Puerto Rican               | 145377                           | 1.9  | 44781                    | 1.6  | 100596                | 2.0  | 52312                       | 1.3  | 93065                     | 2.4  |
| 3.                         | Mexican-Mexicano           | 176729                           | 2.3  | 85533                    | 3.0  | 91196                 | 1.8  | 59790                       | 1.5  | 116939                    | 3.1  |
| 4.                         | Mexican-American           | 618190                           | 7.9  | 281617                   | 9.9  | 336573                | 6.8  | 254082                      | 6.4  | 364108                    | 9.5  |
| 5.                         | Cuban/Cuban-American       | 31149                            | 0.4  | 7716                     | 0.3  | 23433                 | 0.5  | 17812                       | 0.4  | 13337                     | 0.3  |
| 6.                         | Other Latin American       | 113232                           | 1.4  | 36467                    | 1.3  | 76765                 | 1.5  | 44739                       | 1.1  | 68493                     | 1.8  |
| 7.                         | Other Spanish              | 14299                            | 0.2  | 6336                     | 0.2  | 7963                  | 0.2  | 11390                       | 0.3  | 2909                      | 0.1  |
| 8.                         | Hispanic/Spanish, non-spec | 259631                           | 3.3  | 121314                   | 4.2  | 138317                | 2.8  | 115287                      | 2.9  | 144344                    | 3.8  |
| 9-11.                      | Hispanic/Spanish, unk      | 6582                             | 0.1  | 3565                     | 0.1  | 3017                  | 0.1  | 0                           | 0.0  | 6582                      | 0.2  |
| 12.                        | Non Hispanic/Spanish Orig  | 6393943                          | 81.8 | 2242517                  | 78.5 | 4151426               | 83.7 | 3410510                     | 85.5 | 2983433                   | 77.9 |

**APPENDIX H**  
**DESCRIPTIVE STATISTICS FOR TWO SAMPLING WEIGHT VARIABLES**  
**INCLUDED IN THE 1998 NHIS/NIPRCS DATA FILE**

DESCRIPTIVE STATISTICS FOR TWO SAMPLING WEIGHT VARIABLES INCLUDED IN 1998 NHIS/NIPRCS DATA FILE

NIPRCS 1998  
WEIGHT - WTFA\_IM

|                       | NUMBER<br>CHILDREN | SUM OF<br>WEIGHTS | MINIMUM<br>VALUE | MAXIMUM<br>VALUE | MEAN    | COEFFICIENT<br>OF VARIATION |
|-----------------------|--------------------|-------------------|------------------|------------------|---------|-----------------------------|
| Total                 | 2966               | 7819081           | 635              | 9536             | 2636.24 | 45.8590                     |
| <b>Age of Child</b>   |                    |                   |                  |                  |         |                             |
| 1. 12-18              | 894                | 2361110           | 706              | 9536             | 2641.06 | 45.6373                     |
| 2. 19-35              | 2072               | 5457971           | 635              | 8587             | 2634.16 | 45.9656                     |
| <b>Gender</b>         |                    |                   |                  |                  |         |                             |
| 1. Male               | 1478               | 4001034           | 725              | 9536             | 2707.06 | 45.4107                     |
| 2. Female             | 1488               | 3818047           | 635              | 7559             | 2565.89 | 46.1683                     |
| <b>Race/Ethnicity</b> |                    |                   |                  |                  |         |                             |
| 1. Hispanic           | 973                | 1425138           | 635              | 7559             | 1464.68 | 44.0350                     |
| 2. Black, nonHispanic | 467                | 1107459           | 956              | 6449             | 2371.43 | 32.2906                     |
| 3. White, nonHispanic | 1406               | 4892954           | 1071             | 9536             | 3480.05 | 25.7149                     |
| 4. Other, nonHispanic | 120                | 393530            | 1001             | 7172             | 3279.42 | 29.5582                     |

NIPRCS 1998

WEIGHT - WT\_BV2

|                       | NUMBER CHILDREN | SUM OF WEIGHTS | MINIMUM VALUE | MAXIMUM VALUE | MEAN    | COEFFICIENT OF VARIATION |
|-----------------------|-----------------|----------------|---------------|---------------|---------|--------------------------|
| Total                 | 1691            | 7819081.00     | 786.371       | 16626.70      | 4623.94 | 53.9324                  |
| Age of Child          |                 |                |               |               |         |                          |
| 1. 12-18              | 497             | 2361110.05     | 914.912       | 15232.35      | 4750.72 | 53.1491                  |
| 2. 19-35              | 1194            | 5457970.95     | 786.371       | 16626.70      | 4571.16 | 54.2503                  |
| Gender                |                 |                |               |               |         |                          |
| 1. Male               | 847             | 3968952.92     | 786.371       | 16568.10      | 4685.89 | 53.7303                  |
| 2. Female             | 844             | 3850128.08     | 815.381       | 16626.70      | 4561.76 | 54.1341                  |
| Race/Ethnicity        |                 |                |               |               |         |                          |
| 1. Hispanic           | 512             | 1425137.99     | 786.37        | 13784.16      | 2783.47 | 56.6945                  |
| 2. Black, nonHispanic | 217             | 1107458.93     | 1217.83       | 16626.70      | 5103.50 | 52.8899                  |
| 3. White, nonHispanic | 901             | 4939885.08     | 1222.93       | 16568.10      | 5482.67 | 41.8391                  |
| 4. Other, nonHispanic | 61              | 346598.99      | 880.05        | 14060.23      | 5681.95 | 46.0745                  |