

# **INSTRUCTIONS**

**for**

**Uninstalling**  
*Medicare Remit Easy Print Software*



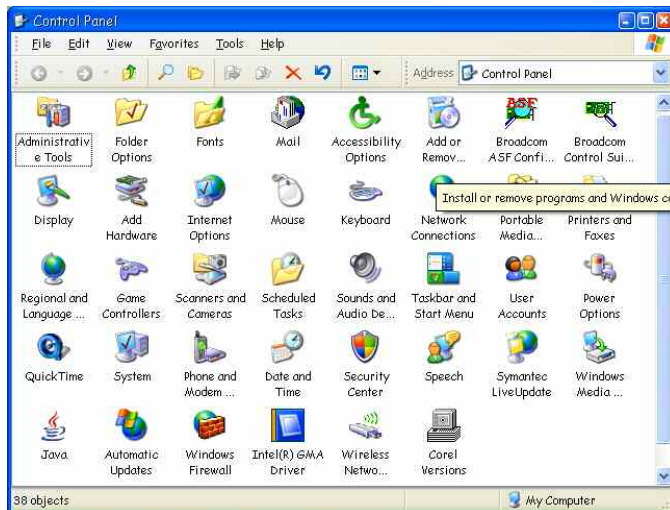
# Uninstalling EasyPrint

*Unless otherwise indicated, the screen images contained in this document were taken from the Windows XP operating system. The actual screens you see may vary depending upon the version of Windows you are using.*

## Step 1. Navigate to Windows Control Panel Add/Remove Programs

**1.A.1** From the taskbar, click **Start>Control Panel**

**1.A.2** Depending upon your operating system, you will see a window similar to the following:

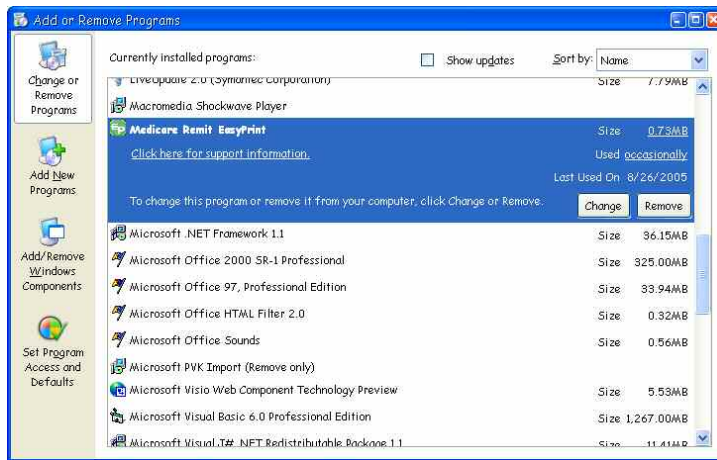


*Windows 2000/XP control panel*

## Step 2A. Removing the EasyPrint Application

**2A.1.** Double click the Add/Remove programs icon in the control panel.

**2A.2.** From the resulting list, select Medicare Remit EasyPrint:



2.A.3 Click Remove then click yes on the confirmation dialog:



**THE UNINSTALL PROCESS IS COMPLETE!**