

## U.S. Natural Gas Imports and Exports: 2007

This special report looks at recent trends in U.S. international natural gas trade. Natural gas import and export data, including liquefied natural gas (LNG) data, are provided through the year 2007 in the appendix (Tables SR1-SR9). A note on utilized data sources is provided at the end of this report. Questions concerning this report should be addressed to Damien Gaul at 202-586-2073, or through e-mail at [Damien.Gaul@eia.doe.gov](mailto:Damien.Gaul@eia.doe.gov).

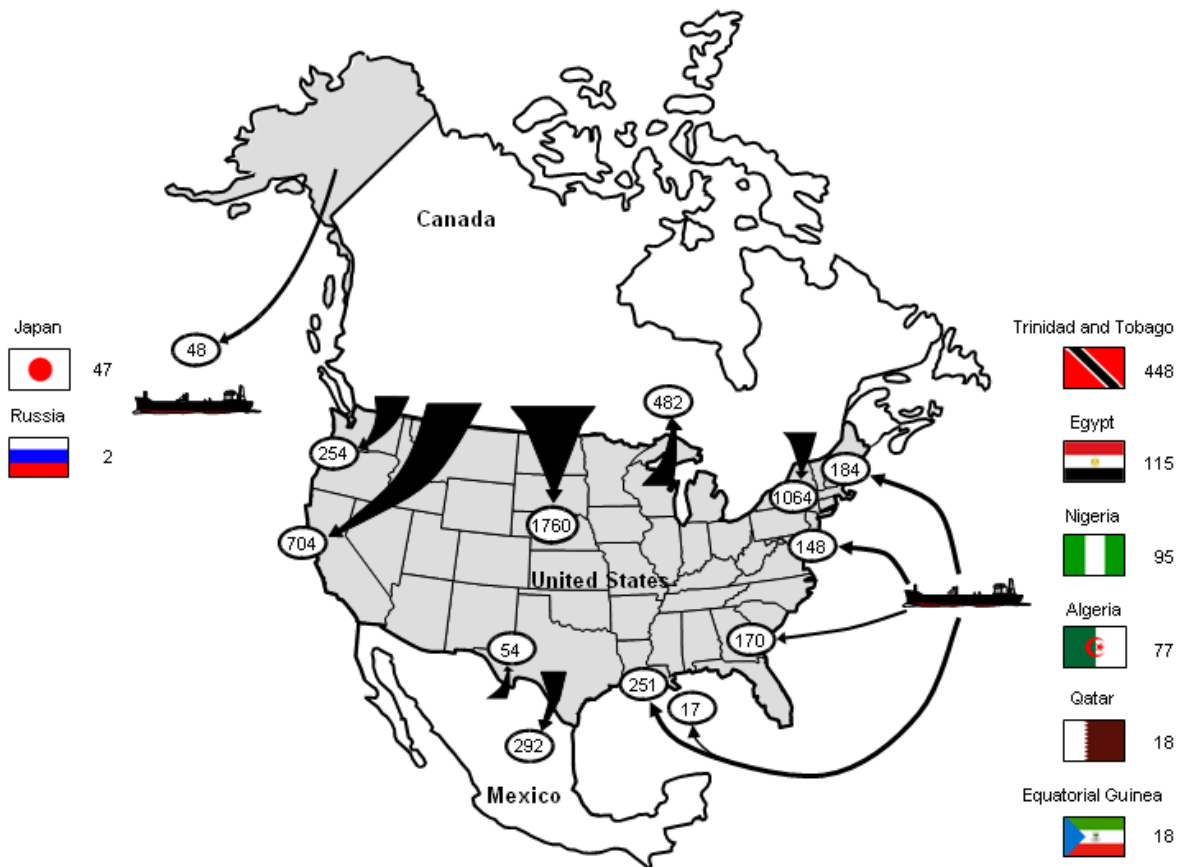
International natural gas deliveries in 2007 continued to be a critical source of supply meeting U.S. energy demand. U.S. liquefied natural gas (LNG) imports, which are delivered via ocean-going tankers, reached historically high volumes with large percentage growth over the previous year.<sup>1</sup> However, LNG still accounted for only a small portion of overall U.S. natural gas imports, and the pace of deliveries fell dramatically in the second half of the year. U.S. pipeline imports from Canada, which is by far the largest source country of natural gas exports to the United States, increased to near-record levels after declining the previous year.

Net U.S. imports equaled approximately 16 percent of

domestic consumption in 2007, a portion that in recent years has risen steadily, albeit at a slow pace; in fact, net U.S. imports in 2007 were just 4 percentage points higher than the 12 percent recorded 10 years prior. Despite being a small portion of overall U.S. supplies, the volumes received from foreign sources still qualify the United States as the largest importer of natural gas in the world. Altogether, the United States received imports from eight different countries (Figure 1).

Markets in Mexico and Canada are connected with natural gas markets in the United States by an extensive pipeline network that has allowed for increasing volumes to be traded

**Figure 1. Flow of Natural Gas Imports and Exports, 2007 (Billion Cubic Feet)**



**Note:** North American natural gas flows are transported primarily through pipelines, but a very small portion of trade (less than 1 percent) occurs through trucking of LNG.

**Source:** Energy Information Administration, based on data from the Office of Fossil Energy, U.S. Department of Energy, *Natural Gas Imports and Exports, DOE/FE-0521* (Washington DC, April 2008), web site [www.fe.doe.gov](http://www.fe.doe.gov).

<sup>1</sup> LNG (liquefied natural gas) is natural gas, primarily methane, which has been cooled to its liquid state at -260°F (-162.2°C). Liquefying natural gas reduces the volume it occupies by more than 600 times, making it a practical size for storage and transportation.

over time. More recently, the United States has become increasingly active in the global market for LNG. In 2007, the United States was the fourth leading importer of LNG in the world behind Japan, South Korea, and Spain.<sup>2</sup>

The United States also has exported increased volumes in recent years to its trading partners. In spite of a decline in pipeline exports to Mexico, overall U.S. pipeline exports in North America increased in 2007. LNG exports (primarily from Alaska to Japan) declined, but there were two new destination countries for U.S. LNG exports during the year. A single LNG cargo, carrying the equivalent of about 2 billion cubic feet (Bcf) of natural gas in gaseous form, was delivered to Russia in October, while a single truckload of LNG was delivered to Canada in July.

This report distinguishes between international trade of natural gas by pipeline and LNG. After a brief Overview, it will first address pipeline imports and exports with Canada and Mexico in 2007 and, second, developments in U.S. participation in global LNG trade.

## Overview/Trends

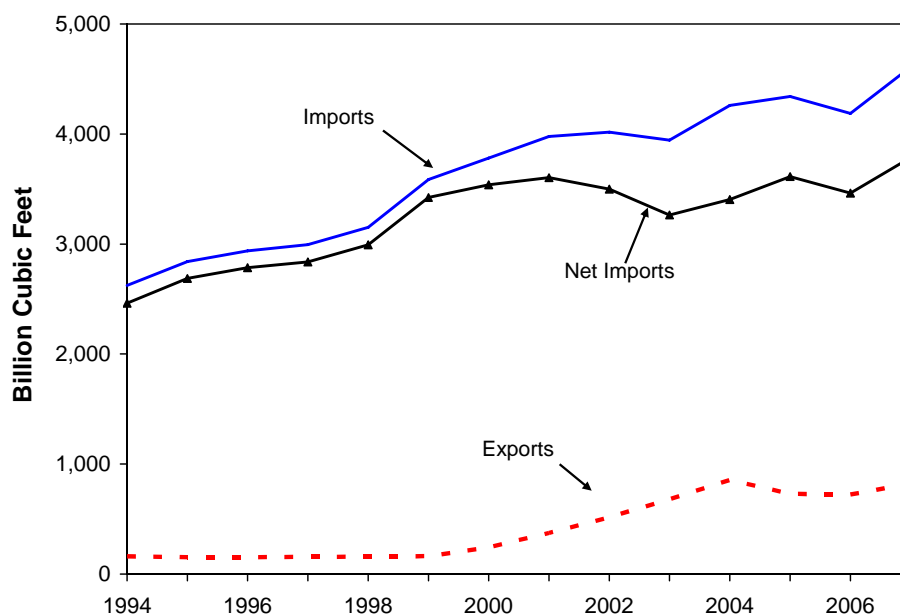
**Net imports to the United States in 2007 increased 323 Bcf to 3,785 Bcf, which marks the highest level of net imports on record (Figure 2). Increases in both LNG**

deliveries from a variety of countries and pipeline imports from Canada resulted in growth in gross imports of 421 Bcf. However, an increase in U.S. gross exports offset about 23 percent of the expanded import level. Net imports represented 16.4 percent of total U.S. natural gas consumption.

**Net imports from Canada in 2007 totaled 3,301 Bcf, which was an increase of 1.6 percent, or 52 Bcf, over the previous year.** Despite this slight growth in 2007, Canadian supplies generally have not increased as a share of the U.S. market in recent years, and the level of net imports from Canada on average during the last 5 years has fallen (Figure 3). Gross imports in 2007 increased 193 Bcf, or 5.4 percent. However, this increase coincided with a strong increase in exports from the United States to Canada. The slight increase in net imports in 2007 underscores the difficulty Canada is experiencing in increasing output from conventional resources, primarily located in the Western Canada Sedimentary Basin (WCSB).

**Gross U.S. pipeline exports to Mexico in 2007 declined 30 Bcf, or 9.4 percent, from the previous year.** U.S. exports to Mexico totaled just 292 Bcf, the lowest level in 4 years. The recent decline in U.S. exports coincides with greater output from Mexico's national oil and gas company Petróleos Mexicanos (Pemex), as well as the construction and

**Figure 2. Total U.S. Natural Gas Imports and Exports, 1994-2007**



**Source:** Energy Information Administration, based on data from the Office of Fossil Energy, U.S. Department of Energy, *Natural Gas Imports and Exports*, DOE/FE-0521 (Washington DC, April 2008), web site [www.fe.doe.gov](http://www.fe.doe.gov).

<sup>2</sup> BP, *Statistical Review of World Energy 2007*, (June 2008). Online. <http://www.bp.com>.

operation of new LNG receiving capacity in Mexico.

The average price for all imports was virtually unchanged from 2006 to 2007, dropping by 1 cent per thousand cubic feet (Mcf) to \$6.87 per Mcf, which is the equivalent of \$6.70 per million British thermal units (MMBtu).<sup>3</sup> On a volume-weighted basis, the price of imports in the form of LNG averaged \$7.07 per Mcf, while the price for imports by pipeline averaged \$6.83. However, because of the higher Btu content of LNG, the average price for LNG was less on a heat content (or “Btu”) basis at \$6.69 per MMBtu compared with \$6.70 per MMBtu for pipeline imports. The average wellhead price in the United States in 2007 was \$6.39 per Mcf (\$6.22 per MMBtu), compared with \$6.40 per Mcf (\$6.23 per MMBtu) in 2006.<sup>4</sup>

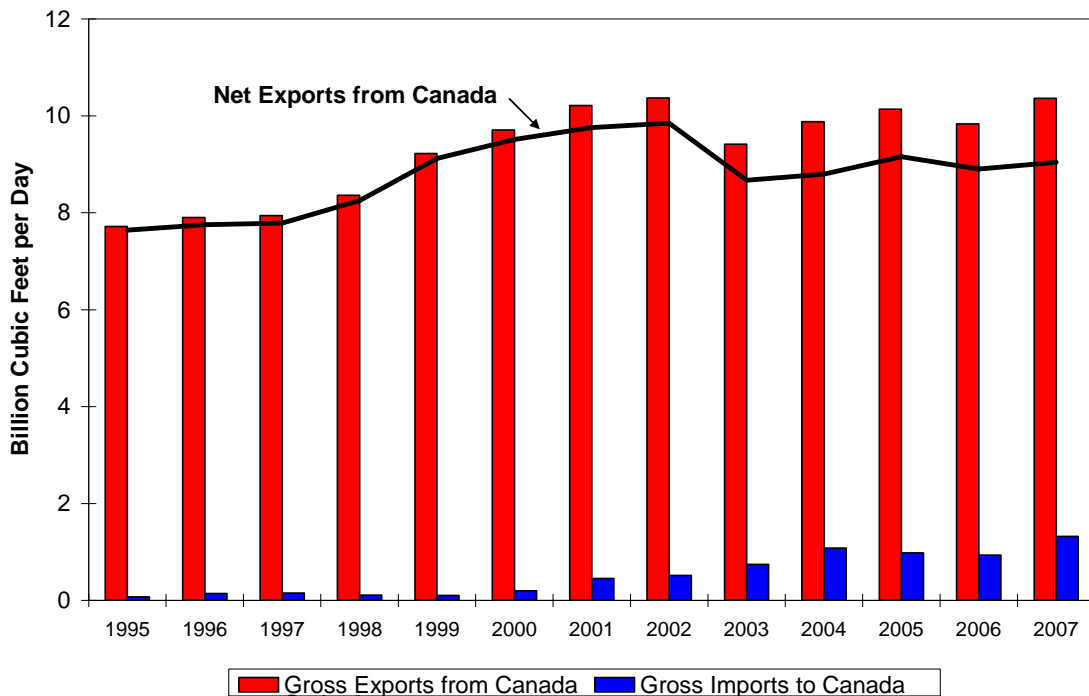
LNG imports rose significantly to 771 Bcf as the number of LNG source countries expanded from four to six. The volume of LNG imports was another record high and more than triple the volume received in 2002. Increased supplies from Trinidad and Tobago, as well as from Algeria, primarily

accounted for the growth in deliveries in 2007. Trinidad and Tobago is the source country with the largest contribution to U.S. LNG imports, while Algeria was, at one time, the sole supplier of LNG to the United States. However, LNG import growth slowed significantly starting in the second half of the year as LNG demand increased in other parts of the world, particularly in Japan (the largest-volume LNG importer in the world) and Europe.

## Canada-U.S. Pipeline Trade

With productive capacity far exceeding its domestic consumption, Canada is the second-largest exporter of natural gas in the world. All of the country’s natural gas exports are delivered into the U.S. market, a trading relationship that has proved lucrative for Canada while providing the United States essential supplies of natural gas. This Canadian-U.S. trade predominantly occurs through major long-haul pipeline systems originating from supply basins in Alberta, British Columbia, and Nova Scotia,

Figure 3. Canadian International Trade Movements, 1995-2007



Source: Energy Information Administration, based on data from the Office of Fossil Energy, U.S. Department of Energy, *Natural Gas Imports and Exports, DOE/FE-0521* (Washington DC, April 2008), web site [www.fe.doe.gov](http://www.fe.doe.gov).

<sup>3</sup> See Table SR2, Summary of U.S. Natural Gas Imports, 2006-2007, which is appended to this report.

<sup>4</sup> Energy Information Administration, *Natural Gas Monthly*, DOE/EIA-0130 (2008/12) (Washington, DC, December 2008), Table 3, for wellhead price data. The wellhead price was converted from dollars per Mcf to dollars per MMBtu using an average heat content of 1,028 Btu per cubic foot in 2007 as published in Table A4 of the Energy Information Administration, *Annual Energy Review 2007*. DOE/EIA-0348 (2007) (Washington, DC, June 2008).

Canada. The integrated network transports Canadian natural gas to markets in nearly every major northern consuming region of the United States, where it competes with U.S. domestic production.

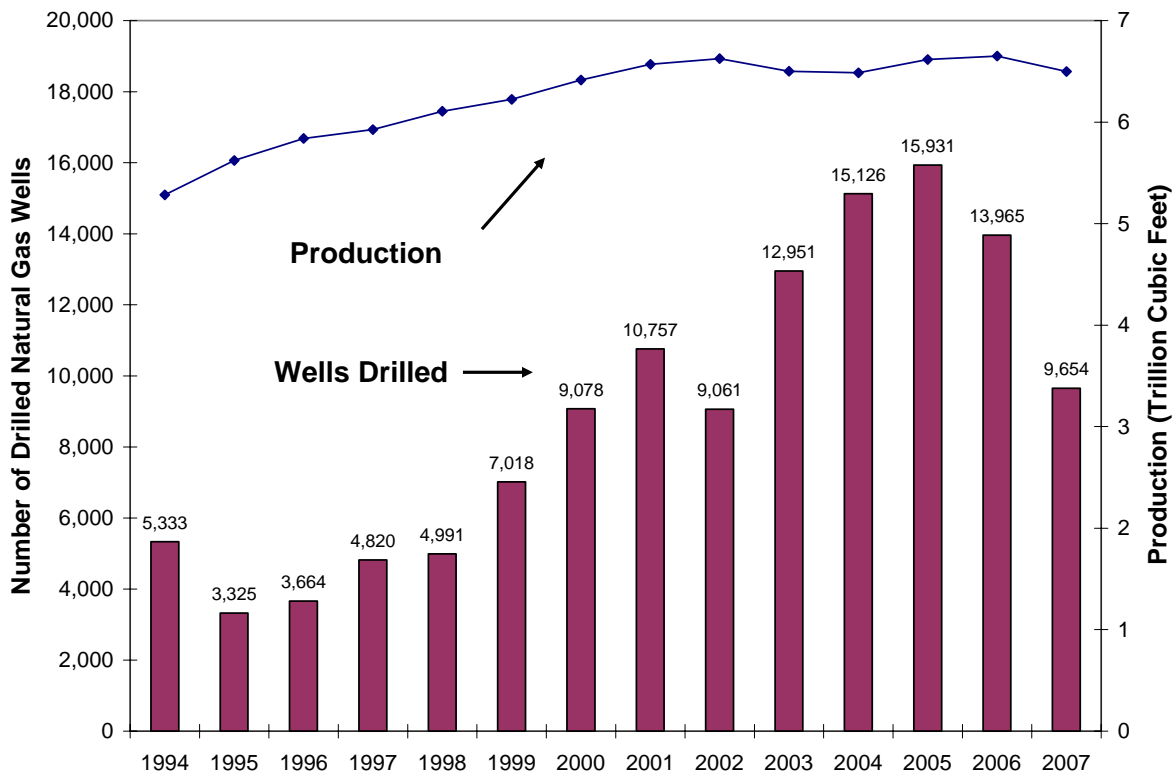
Although the volume of U.S. net imports of Canadian natural gas grew 1.6 percent over the previous year to 3,301 Bcf, this volume was still 8 percent less than the level just 5 years before. This general decline in U.S. imports from Canada over time reflects underlying trends in the Canada's production, which is concentrated in the WCSB (mostly located in Alberta). In 2007, Canadian production of 6,499 Bcf (17.8 Bcf per day) was 2.3 percent less than production of 6,652 Bcf (18.2 Bcf per day) in 2006.<sup>5</sup>

Producers in the WCSB continued to reduce drilling programs during 2007 as production costs (including labor) escalated and North American natural gas prices stabilized. In 2007, the number of drilled natural gas wells in Canada dropped to 9,654, about 31 percent less than in 2006 and 39

percent less than the record peak number of wells drilled in 2005 (Figure 4).<sup>6</sup> Although the accompanying output decline was not as severe, this slowdown in drilling new prospects demonstrated a lack of incentive to invest in new production in the WCSB in the current economic environment. Other factors played a role in maintaining the level of exports to the United States: the level of natural gas in storage in Canada at the end of December 2007 was significantly less than the level at the end of December 2006, and consumption in Canada was approximately the same in comparison with the previous year.<sup>7</sup>

Total revenue to Canadian producers suggested by the volume of exports in 2007 is estimated at \$25.9 billion, a slight increase over the \$24.5 billion in revenue in 2006. However, revenues from exports were well below the record level of \$29.9 billion in 2005. Because the value of the U.S. dollar in comparison with the Canadian dollar declined between 2005 and 2007, the value of revenue from natural gas trade with the United States has declined

**Figure 4. Number of Drilled Natural Gas Wells and Production in Canada, 1994-2007**



**Sources:** Production data: International Energy Agency, *Natural Gas Monthly Survey*, Online at <http://www.iea.org>. (December 2008). Well data: Canadian Association of Petroleum Producers, *Statistical Handbook*. Data available on the Internet at <http://www.capp.ca>.

<sup>5</sup> International Energy Agency, *Natural Gas Monthly*, (Paris, France, December 2008). Online at <http://www.iea.gov>.

<sup>6</sup> Canadian Association of Petroleum Producers, *Statistical Handbook*, Data available on the Internet at <http://www.capp.ca>.

<sup>7</sup> International Energy Agency, *Natural Gas Monthly*, (Paris, France, December 2008). Online at <http://www.iea.gov>.

even more severely than suggested by the comparison based on estimates in nominal U.S. dollars.

U.S. exports to Canada occur on a much smaller scale than flows in the reverse direction. Nonetheless, U.S. exports to Canada have grown significantly in recent years and are now an important variable in the trade balance between Canada and the United States. In 2007, U.S. exports to Canada totaled 482 Bcf, which was 41 percent higher than in the previous year. Most of the exported supplies are transported through the St. Clair, Michigan, border point, to major pipeline interconnections and storage fields located in Dawn, Ontario. From Dawn, supplies are then transported eastward to higher-priced markets in both Eastern Canada and the U.S. Northeast. The volume of U.S. exports through this location often varies seasonally and with changes in regional prices. The highest monthly export total at St. Clair (63 Bcf) in 2007 occurred in December and was more than double the low volume of 24 Bcf in August.

To meet future increases in North American demand, Canada's industry has initiated a variety of efforts to increase supplies. Most immediately, Canada's first LNG import terminal, which is being developed to meet demand in the U.S. Northeast and eastern Canada, likely will be operational in early 2009. Irving Oil and Repsol's project, located in Canaport, New Brunswick, has received all necessary regulatory approvals and has completed construction of three tanks, each with storage capacity of about 2.5 Bcf. The facility will have total sendout capacity of 1.2 Bcf per day in its first phase of operations and will use existing and expanded capacity on the Maritimes and Northeast Pipeline to move gas into the U.S. Northeast.

Additionally, as has occurred in the United States, there is renewed interest and optimism regarding unconventional gas recovery in Canada, particularly relating to shale formations. Following recent successes in production output from the Barnett Shale formation in Northeast Texas, as well as other shale formations in the Lower 48 States, several companies have been active in the Upper Montney and Horn River regions of British Columbia. Commercial shale gas production in the Upper Montney region was estimated at approximately 80 million cubic feet (MMcf) per day at the end of the 2007 and is expected to rise rapidly in 2008 and 2009. Encana Corporation, Apache Corporation, and EOG Resources have listed reserves in the area.<sup>8</sup>

A consortium of companies continues to work through the permitting process for a pipeline from the Mackenzie Delta in the Arctic, another effort long underway to increase supply options in Canada. Increased projected costs for the construction of the 760-mile pipeline may result in the project being uneconomical. However, natural gas from the Mackenzie Delta would support Canadian exports to the United States by helping to meet growth in Canadian demand

as a result of oil sands operations in Alberta (the proposed terminus for the pipeline). Without additional supply sources, increased demand in Alberta may significantly affect the volume of natural gas available for export to the United States.

Currently, there are 22 principal entry points for imports from Canada into the United States. For this report, they are grouped into four regions of the United States: the Pacific Northwest, the West, the Midwest, and the Northeast (Figure 5). Imports into all regions but the West increased in 2007.

The Midwest region in 2007 received the greatest percentage (46.5 percent) of total natural gas imports from Canada with imports of approximately 1,760 Bcf. This region, which had an increase in imports of 129 Bcf, or 7.9 percent, from 2006 volumes, includes the largest cross-border pipeline system built in recent years, the Alliance Pipeline System, which crosses the border at Sherwood, North Dakota. Despite the overall increase in imports to this region in 2007, the volumes at the Sherwood, North Dakota, border crossing dropped 8.9 percent to 466 Bcf in 2007. The receipt point with the largest volumes for U.S. imports from Canada is located at Port of Morgan, Montana, where the Northern Border Pipeline connects to the Foothills pipeline portion of the TransCanada Pipeline system, Canada's largest pipeline network. In 2007, volumes increased by 14.7 percent to 764 Bcf. The average price for imports into the Midwest was \$6.70 per Mcf (\$6.52 per MMBtu).

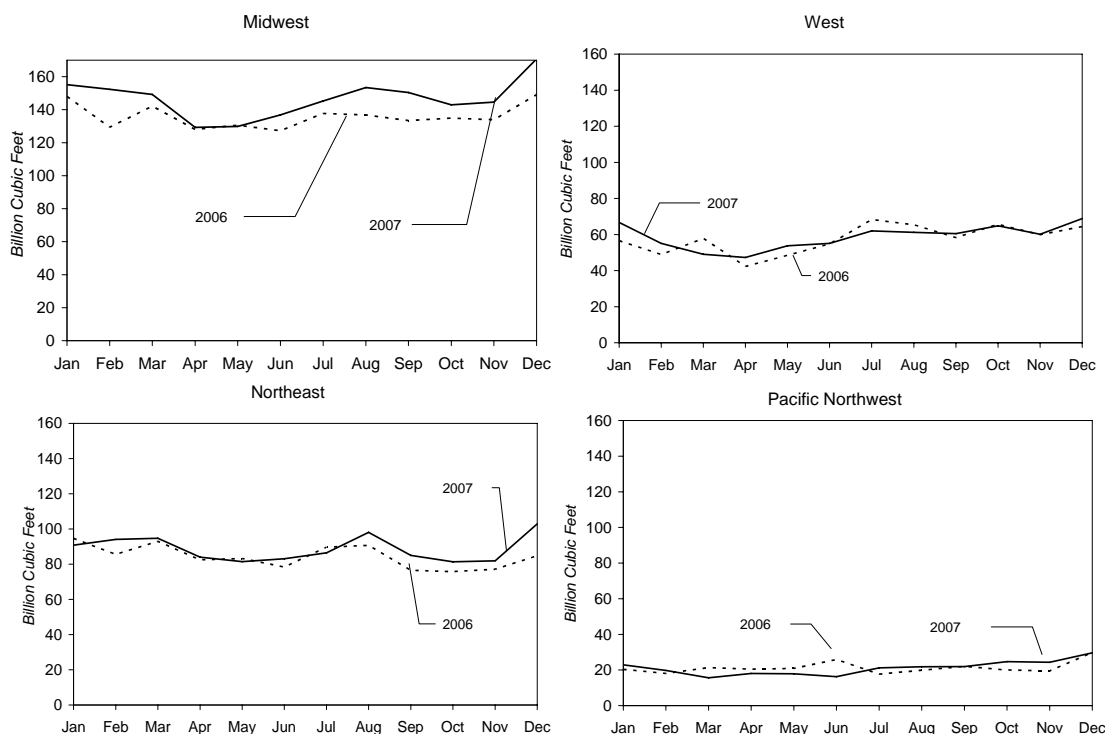
About 28 percent of all U.S. imports from Canada were delivered to the U.S. Northeast in 2007. During the year, Canadian imports into this region increased 52 Bcf, or about 5.1 percent, to 1,064 Bcf. The largest share of imports into the Northeast occurred at the Waddington, New York, border crossing, where National Fuel Supply Corporation connects to TransCanada. The annual volume at this location increased 4 percent to 422 Bcf in 2007. At the Niagara, New York border crossing, where Tennessee Gas Pipeline Company connects with the TransCanada system, volumes increased about 2 Bcf to 357 Bcf. Reflecting their proximity to major consuming markets with the highest prices in the United States, border points in the Northeast had the highest prices of the four import regions. The average price for imports into the Northeast was \$7.45 per Mcf (\$7.31 per MMBtu), which was a decrease of \$0.07 per Mcf (\$0.069 per MMBtu) over the previous year.

The West and the Pacific Northwest regions received, respectively, 18.6 and 6.7 percent of total imports from Canada during 2007. The annual import level into the Pacific Northwest declined by 0.6 percent, or 2 Bcf. Imports into this region have now declined by 35.7 percent since 2003. At the same time, imports to the West region (which includes border points with linkages to California markets) have been steadily increasing in recent years. In 2007, imports to the West increased by 2.0 percent to 704 Bcf. Average prices in the Pacific Northwest and the West during 2007 were,

<sup>8</sup> *North American Natural Gas Supply Assessment*, Navigant Consulting Inc. (prepared for the Clean Skies Foundation), July 2008. Available at <http://www.navigantconsulting.com/industries/energy/fuels/>



**Figure 5. U.S. Natural Gas Pipeline Imports from Canada by Regional Point of Entry, 2006-2007**



**Source:** Energy Information Administration, based on data from the Office of Fossil Energy, U.S. Department of Energy, *Natural Gas Imports and Exports, DOE/FE-0521* (Washington DC, April 2008), web site [www.fe.doe.gov](http://www.fe.doe.gov).

**Notes:** Flows in the Pacific Northwest region consist of points of entry in the State of Washington. Flows in the West region consist of points of entry in Idaho. Points of entry in Montana, North Dakota, Michigan, Minnesota, comprise the Midwest region. Points of entry in New York, Vermont, and Maine comprise the Northeast region.

respectively, \$6.61 per Mcf (\$6.43 per MMBtu) and \$6.31 per Mcf (\$6.14 per MMBtu).

The United States exports natural gas by pipeline to Canada at numerous locations, but most significantly at St. Clair, Michigan, where the Vector Pipeline crosses the border. U.S. exports through St. Clair in 2007 were 419 Bcf, while total exports to Canada were 482 Bcf. The total volume of U.S. exports to Canada in 2007 through the St. Clair border point was 132 Bcf, or 46 percent, higher than the previous year. Increased flows during the year were associated with an expansion of Vector's capacity by 200 MMcf per day to 1.2 Bcf per day in 2007. Furthermore, another expansion of the pipeline in 2009 is expected to bring capacity to 1.3 Bcf per day. The average price of U.S. exports to Canada at St. Clair in 2007 was \$7.24 per Mcf (\$7.04 per MMBtu), 2.0 percent below the 2006 price.

## Mexico – U.S. Pipeline Trade

In marked contrast to a trend of lower natural gas output in the late 1990s and the beginning of this decade, Mexico's national oil and natural gas company Petróleos Mexicanos (Pemex) increased production in 2007 for the fourth consecutive year. Additionally, concerns over sources of

supply also have lessened with Mexico now receiving regular LNG shipments at the Altamira LNG terminal on the east coast of the country.

The result of the growing production base and new LNG supplies has been lower Mexican imports from the United States. Net U.S. exports to Mexico in 2007 totaled 238 Bcf, which is the lowest annual volume since 2001. Gross exports from the United States were 9 percent lower than the previous year at approximately 292 Bcf. Additionally, the balance of trade between the two countries was affected by the United States importing a significantly higher volume from Mexico (although this volume is still relatively small in comparison with U.S. exports to Mexico).

Currently, Mexican natural gas production is concentrated in the south of the country (including offshore Gulf of Mexico), where it is mostly associated with crude oil production. In 2007 there was a 15-percent increase in production over the prior year (Figure 6).<sup>9</sup> However, it is expected that development of reserves in the northern part of the country will be the focus of future production growth with up to 10 times as much proven and probable reserves located in this

<sup>9</sup> International Energy Agency, *Natural Gas Monthly*, (Paris, France, December 2008). Online at <http://www.iea.gov>.

region (including the Burgos Basin) than in the southern part of the country. Indeed, production in 2007 from the northern part of the country totaled 934 Bcf, 90 percent higher than 4 years earlier.<sup>10</sup>

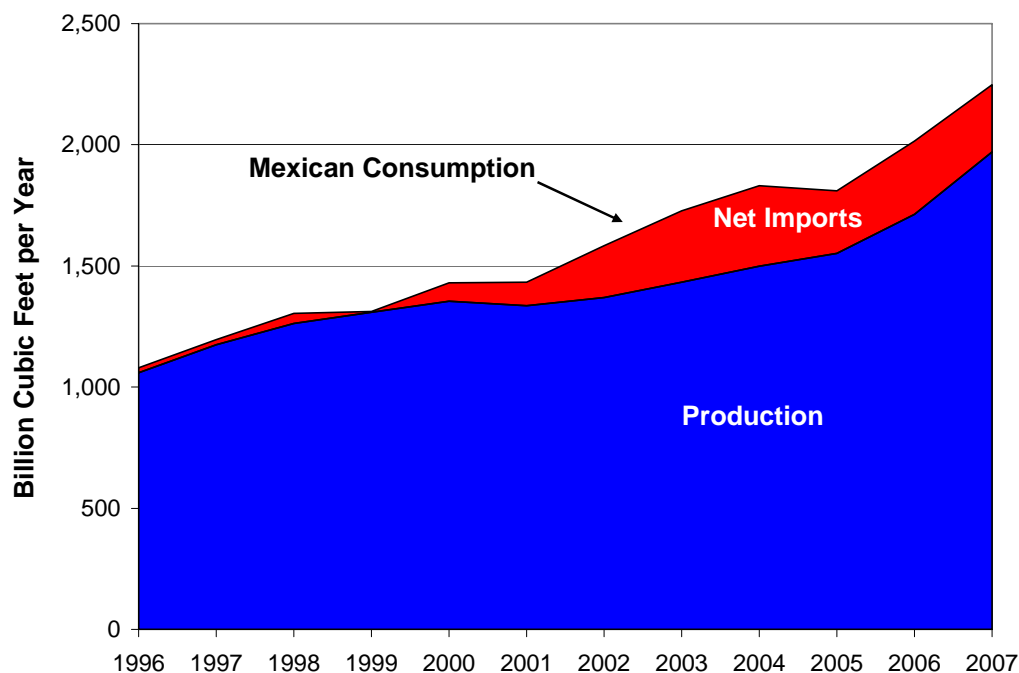
At the same time, Mexico continues to struggle with attracting the necessary level of investment to develop resources, in part the result of the country's prohibition against foreign ownership of oil and natural gas resources. A recent legislative effort to allow foreign investment in Pemex and other energy reforms failed, despite support from President Felipe Calderon. Calderon's predecessor, Vicente Fox, obtained legislative approval for multiple service contracts (MSCs), which allow private firms to subcontract to develop some natural gas projects. However, the Mexican legislature has challenged the legality of MSCs on several occasions, eventually discouraging foreign companies from bidding on projects.

Recent LNG imports have had a significant impact on the natural gas market in Mexico. LNG imports to Mexico commenced in August 2006 with the delivery of a shipment from Nigeria to Altamira LNG, a joint venture of Royal Dutch Shell plc (50 percent), Total S.A. (25 percent), and Mitsui & Co. Ltd (25 percent). In 2007, Altamira received an estimated 110 Bcf, mostly from Nigeria. LNG imports may further increase with the start of operations in May 2008 of the Energia Costa Azul LNG project, near Ensenada, Baja

California. Energia Costa Azul LNG, which is owned by Sempra Energy, Inc., has a peak regasification capacity of 1 Bcf per day. Both Sempra and Royal Dutch Shell (which, although not an owner of the facility, has obtained 50 percent of the send-out capacity rights) have indicated intentions to transport a portion of LNG supplies to the facility across the border to U.S. markets. Additionally, Mexican authorities have awarded a contract for the construction and ownership of an LNG receiving terminal at Manzanillo (Mexico's busiest port on the Pacific Ocean) to a consortium that includes Mitsui & Co. Ltd., Korea Gas Corp. (Kogas) and Samsung Corp. The government has targeted 2011 for the commencement of the plant's operations.

Current natural gas consumption in Mexico is small compared with the rest of North America at about 2.2 trillion cubic feet (Tcf), or approximately 8 percent of the total demand for the continent.<sup>11</sup> However, demand has increased rapidly in the country, with consumption increasing at an average annual rate of 5.5 percent in the past 5 years. The increase in consumption is occurring across all customer classes. Mexico's electric generation sector is increasingly relying on natural gas to meet increases in demand. In addition, as pipeline infrastructure to serve residential and commercial users continues to grow, requirements for natural gas in those sectors have increased substantially. Also, the North American Free Trade Agreement has encouraged greater investment in exporting industries, allowing for

**Figure 6. Mexican Natural Gas Consumption, Production, and Imports, 1994-2007**



Source: International Energy Agency, *Natural Gas Monthly Survey*, Online at <http://www.iea.org>. (December 2008).

<sup>10</sup> Pemex, *Monthly Petroleum Statistics*, (September 2008). Online at <http://www.pemex.com>.

<sup>11</sup> International Energy Agency, *Natural Gas Monthly*, (Paris, France, December 2008). Online at <http://www.iea.gov>.

greater natural gas demand in the industrial sector.

## U.S. LNG Trade

U.S. exports to Mexico primarily serve industries, electric power plants, and local distribution networks in the north of the country. In all, there are 15 natural gas pipeline interconnections at the U.S.-Mexico border, which add up to an import capacity into Mexico of 3.5 Bcf per day.<sup>12</sup> About half of this capacity involves interconnections to the system of Pemex Gas (in the state of Sonora) and the other half of the capacity is connected to other natural gas companies in northern Mexico (Sempra in Baja California and Gasoductos de Chihuahua in Chihuahua).

Completion of several pipeline projects in the early part of this decade facilitated the dramatic increase in U.S. export volumes. However, cross-border pipeline capacity additions slowed considerably, with no new pipelines constructed between the two countries in 2006 or 2007.

Exports equaling 92 Bcf at the U.S.-Mexican border town of Ogilby, California, on the North Baja Pipeline accounted for about 31 percent of U.S. flows to Mexico. Volumes at the Ogilby border point were the highest of any point of entry into Mexico. Through the border point located at Clint, Texas, exports totaled 84 Bcf (18 percent more than 2006), with transport occurring on El Paso Corporation's Samalayuca Pipeline. Deliveries across the border point in Roma, Texas, on Kinder Morgan's Mier-Monterrey Pipeline, were 23 Bcf, or approximately 3 Bcf higher than the previous year. Construction of the Mier-Monterrey Pipeline was completed in March 2003. However, deliveries through Tennessee Gas Pipeline at Rio Bravo, Texas, decreased 6 Bcf to a total of 55 Bcf.

The balance of trade between the United States and Mexico in 2007 was also affected by U.S. imports from Mexico, although these occur on a considerably smaller scale than flows in the reverse direction. The United States imported 54 Bcf from Mexico in 2007, which was more than 4 times the volume imported the previous year. Supplies were imported through three separate border points in Texas, with the largest import total (26.6 Bcf) occurring at the McAllen, Texas, border crossing.

The average price of U.S. pipeline exports to Mexico during the year was \$6.60 per Mcf (\$6.60 per MMBtu), which was 2.2 percent higher than the average price in 2006.<sup>13</sup> The value of U.S. export trade with Mexico was \$1.9 billion, a decrease of \$154 million, or 7.4 percent, from the previous year.

U.S. LNG imports in 2007 totaled the equivalent of 771 Bcf of natural gas in gaseous form. This volume was 32 percent higher than the volume in 2006 and 18 percent more than the previous record of 652 Bcf in 2004. LNG imports have substantially increased since earlier this decade, but growth has been uneven from year to year. In fact, the record volume in 2007 followed annual decreases in 2005 and 2006. In addition, there was significant variation in the pace of deliveries during the course of 2007, as LNG suppliers in August began re-directing volumes to other parts of the world in response to higher prices. LNG deliveries declined in each of the remaining months of 2007.

During 2007, there were five LNG import terminals operating in the continental United States. Southern Union Company's Trunkline LNG terminal in Lake Charles, Louisiana, received the largest volume of any U.S. terminal with receipts totaling 251 Bcf. The facility owned by Suez Energy North America, Inc., in Everett, Massachusetts, received the second-biggest volume at 184 Bcf. El Paso Corporation's Southern LNG facility on Elba Island, Georgia, received 170 Bcf in 2007, while Dominion's Cove Point LNG facility on the Chesapeake Bay in Maryland received 148 Bcf. Excelsior Energy's Gulf Gateway port offshore Gulf of Mexico received 17 Bcf.

Although shipments to the Everett and Elba Island facilities were relatively constant during the year, the offshore Gulf Gateway port and the Lake Charles and Cove Point facilities all received LNG shipments primarily during the spring and summer (Figure 7). The pattern of U.S. LNG imports reflects the vicissitudes of global supply and demand. The mid-year increase in deliveries occurred at a time of relatively low demand for LNG in other parts of the world. As foreign demand increased during the fall and into winter, U.S. LNG imports declined significantly as available global supplies were bid away by other countries. In fact, the lowest monthly total for LNG imports in 2007 occurred in December, when the United States received 21 Bcf. This was equivalent to 21 percent of the peak month deliveries of 99 Bcf in April 2007.

LNG imports during the year came from six source countries, compared with just four in 2006. Deliveries from Trinidad and Tobago, representing 58 percent of all LNG deliveries, totaled 448 Bcf, about 58 Bcf more than in the previous year. The Atlantic LNG facility, located in Port Fortin, Trinidad and Tobago, now has four operational trains, the newest of which is the largest in the world with the capacity to liquefy 240 Bcf per year.<sup>14</sup> In total, Atlantic LNG has a production capacity of 15 tons per year (720 Bcf).

Egypt, which only started exporting LNG in 2005, exported a total of 115 Bcf to the United States in 2007, which was down slightly from the previous year volume of 120 Bcf.

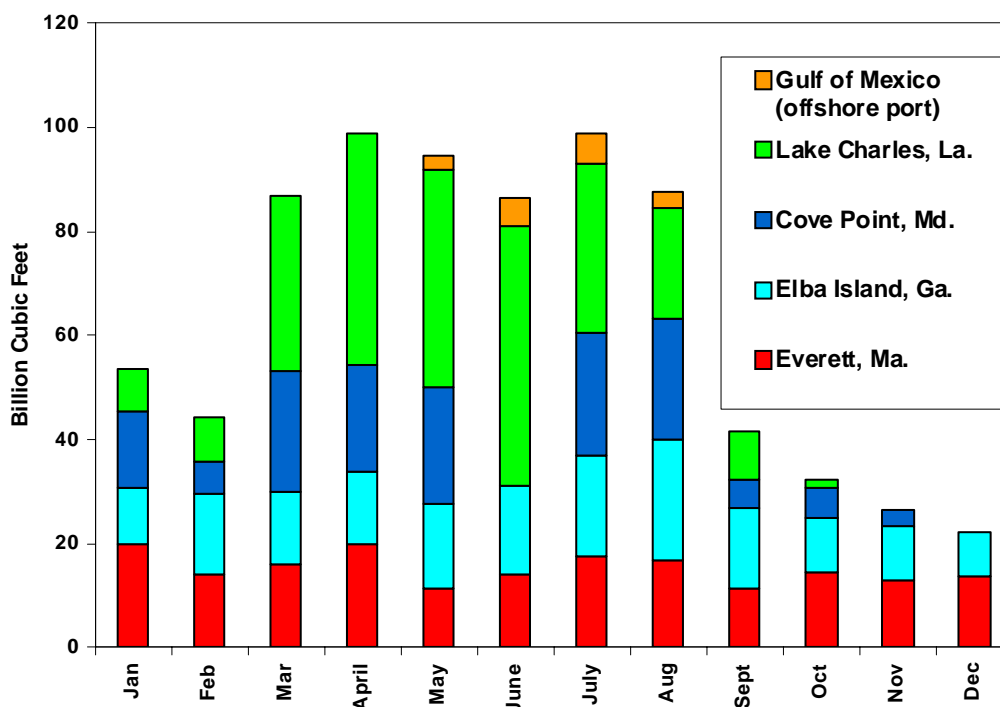
<sup>12</sup> Energy Information Administration, Gas Transportation Information System, Natural Gas Pipeline Capacity Database.

<sup>13</sup> The heat content of natural gas delivered to Mexico from the United States is generally lower than the average heat content of U.S. domestic production at 1,000 British thermal units per cubic foot of natural gas.

<sup>14</sup> Conversion based from reported 5 million tons per year was based on a ratio of 48 Bcf of natural gas in gaseous form per 1 million tons of LNG.



**Figure 7. LNG Imports by Terminal and Month, 2007**



**Source:** Energy Information Administration, based on data from the Office of Fossil Energy, U.S. Department of Energy, *Natural Gas Imports and Exports, DOE/FE-0521* (Washington DC, April 2008), web site [www.fe.doe.gov](http://www.fe.doe.gov).

Nigeria was the source country for the third-largest volume of U.S. LNG imports. U.S. imports from Nigeria increased from 57 Bcf in 2006 to 95 Bcf in 2007, because of increased capacity at the country's liquefaction facility on Bonny Island. Algerian LNG production also increased in 2007 in comparison with 2006, leading to U.S. imports from this country growing more than fourfold in volume to 77 Bcf. Qatar and Equatorial Guinea (a new LNG-exporting country in 2007) each exported 18 Bcf of LNG to the United States.

Although numerous companies have announced intentions to participate in the emerging international trade of LNG with the United States, the number of companies that have actually imported LNG in recent years has been few and relatively unchanged. Through its BG LNG Services subsidiary, BG Group in 2007 imported the largest volume of LNG (422 Bcf), accounting for about 55 percent of overall LNG imports. Suez North America's entire throughput (184 Bcf) was sourced in Trinidad and Tobago and imported through its Everett terminal. The combined total for the three next largest importers was less than the Suez volume. BP (55 Bcf), Statoil (52 Bcf), and Shell (42 Bcf) all imported LNG solely through the Cove Point LNG facility. Lastly, Excelsior Energy imported 17 Bcf through its Gulf Gateway terminal offshore Gulf of Mexico.

Although prices for LNG in the global market are often set through long-term contracts of 20 or more years in length and are often tied to the price of oil, prices for U.S. LNG imports

are usually set on a short-term basis. In 2007, the United States received cargos carrying a total 404 Bcf through short-term authorizations from the U.S. Department of Energy's Office of Fossil Energy. Although price considerations are not uniform for all these short-term LNG imports, many purchase prices appear pegged to U.S. domestic prices, particularly prices at the Henry Hub.

The average price for LNG imports in 2007 was highest (based on heat content) for supplies from Trinidad and Tobago at \$6.80 per MMBtu (or \$7.14 per Mcf). LNG from Algeria was delivered at an average price of \$6.58 per MMBtu (or \$7.17 per Mcf.), which was the second-highest price received for LNG by any source country. On average, the price of LNG imported to the United States was \$6.69 per MMBtu (\$7.07 per Mcf), which was similar to the average price of \$6.70 per MMBtu (\$6.83 per Mcf) for imports to the United States by pipeline.

Although LNG imports reached historical highs in 2007, they still represented only about 3.7 percent of U.S. consumption and slightly less than 17 percent of U.S. gross imports. Moreover, very sparse deliveries in the second half of 2007 highlighted the extreme competition that has developed for LNG supplies. Beginning in September 2007, the global LNG market was characterized by limited supply availability, strong world demand, and high prices. As a result, U.S. LNG imports declined dramatically in subsequent months as

buyers in other countries have consistently demonstrated a willingness to pay more than U.S. market prices for cargos.

The scarcity of LNG supplies on the world market followed delays in global supply expansion that had been expected in the latter half of 2007, including the ramping up of new projects in Norway and Qatar. Additionally, maintenance of existing infrastructure for the production and export of LNG significantly reduced output. In November 2007, Norway's Snohvit facility, with production capacity of 200 Bcf per year was closed because of water leakage. In late January 2008 it began producing again at approximately 60 percent capacity utilization.<sup>15</sup>

At the same time, Japan and South Korea, the largest LNG-consuming countries in the world, significantly stepped up purchasing activity. Both are projected to have relatively slow consumption growth for natural gas overall, but both are almost entirely dependent on LNG to meet their natural gas demand. Thus, any natural gas demand growth or market disruptions may significantly affect the global LNG market. Japan started increasing LNG imports in July 2007 to make up for the temporary closure of its 8-gigawatt Kashiwazaki-Kariwa nuclear plant following damage caused by an earthquake.

Despite intense competition and very high prices for LNG supplies during the second half of 2007, companies in the Lower 48 States continued progress toward the construction of new LNG terminals. To date in 2008, these efforts have resulted in the opening of three new LNG import facilities: Sabine Pass LNG, L.P., located in Cameron Parish, Louisiana; Freeport LNG L.P., located on Quintana Island, Texas; and Excelerate Energy LLC's Northeast Gateway terminal sited offshore Massachusetts. A fourth LNG facility, Cameron LNG, located on Lake Charles, Louisiana, began construction in late 2005 and expects to begin commercial operations in 2009. By the first quarter 2009, total U.S. capacity to receive LNG imports is expected to exceed 11 Bcf per day.

## Conclusion

Foreign trade in natural gas is an important part of U.S. supplies. Net imports in 2007 were at an all-time high of 3,785 Bcf. Growth in the LNG sector of U.S. natural gas supply continued in 2007 as the United States imported a record 771 Bcf. However, a severe reduction in U.S. LNG imports in the second half of the year was recorded as other countries offered higher prices and bid away cargos from the United States. U.S. net imports by pipeline from Canada reversed a 1-year downturn, but rose only slightly to 3,301 Bcf. Meanwhile, pipeline exports to Canada continued to expand, further evidence of an increasingly integrated North American marketplace.

---

<sup>15</sup> "Snohvit Hits Second Snag," *World Gas Intelligence*. (April 2, 2008), p.5.

#### Data Sources:

Data for 1995 through 2007 are based on company filings made with the U.S. Department of Energy, Office of Fossil Energy, but may be the result of adjustments by the Energy Information Administration during review and comparison with data from EIA's *Natural Gas Monthly* and *Natural Gas Annual*. The Office of Fossil Energy filings report data on a monthly level and are received quarterly. The Office of Fossil Energy collects these data as part of its regulatory oversight responsibilities. These data are published by the Office of Fossil Energy in the quarterly report, *Natural Gas Imports and Exports* (DOE/FE-0360). Data related to pipeline and terminal capacities were obtained from the Energy Information Administration, Office of Oil and Gas, as well as from trade press, companies, and industry sources.

Data for 1994 and earlier years were obtained from EIA Form FPC-14, "Annual Report for Importers and Exporters of Natural Gas," which was discontinued in 1995. The data reported on Form FPC-14 represented physical movements of natural gas, whereas the data collected by the Office of Fossil Energy are reported on an equity (sales) basis. For 1994 and earlier years, comparisons of the information in this article (physical movements) with the information reported by the Office of Fossil Energy (sales) may show differences because reporting requirements were different. Further information about how import and export data are collected is provided in the *Natural Gas Monthly*, Appendix B, "Data Sources."

**Table SR1. Historical Summary of U.S. Natural Gas Net Imports, 1955-2007**  
(Million Cubic Feet)

Year	Total Imports	Total Exports	Net Imports	Total Consumption	Net Imports as Percentage of Total Consumption
1955.....	10,888	31,029	--	8,693,657	--
1956.....	10,380	35,963	--	9,288,865	--
1957.....	37,941	41,655	--	9,846,139	--
1958.....	135,797	38,719	97,078	10,302,608	0.94
1959.....	133,990	18,413	115,577	11,321,181	1.02
1960.....	155,646	11,332	144,314	11,966,537	1.21
1961.....	218,860	10,747	208,113	12,489,268	1.67
1962.....	401,534	15,814	385,720	13,266,513	2.91
1963.....	406,204	16,957	389,247	13,970,229	2.79
1964.....	443,326	19,603	423,723	14,813,808	2.86
1965.....	456,394	26,132	430,262	15,279,716	2.82
1966.....	479,780	24,639	455,141	16,452,403	2.77
1967.....	564,226	81,614	482,612	17,388,360	2.78
1968.....	651,885	93,745	558,140	18,632,062	3.00
1969.....	726,951	51,304	675,647	20,056,240	3.37
1970.....	820,780	69,813	750,967	21,139,386	3.55
1971.....	934,548	80,212	854,336	21,793,454	3.92
1972.....	1,019,496	78,013	941,483	22,101,452	4.26
1973.....	1,032,901	77,169	955,732	22,049,363	4.33
1974.....	959,284	76,789	882,495	21,223,133	4.16
1975.....	953,008	72,675	880,333	19,537,593	4.51
1976.....	963,768	64,711	899,057	19,946,496	4.51
1977.....	1,011,002	55,626	955,376	19,520,581	4.89
1978.....	965,545	52,532	913,013	19,627,478	4.65
1979.....	1,253,383	55,673	1,197,710	20,240,761	5.92
1980.....	984,767	48,731	936,036	19,877,293	4.71
1981.....	903,949	59,372	844,577	19,403,858	4.35
1982.....	933,336	51,728	881,608	18,001,055	4.90
1983.....	918,407	54,639	863,768	16,834,914	5.13
1984.....	843,060	54,753	788,307	17,950,524	4.39
1985.....	949,715	55,268	894,447	17,280,943	5.18
1986.....	750,449	61,271	689,178	16,221,296	4.25
1987.....	992,532	54,020	938,512	17,210,809	5.45
1988.....	1,293,812	73,638	1,220,174	18,029,588	6.77
1989.....	1,381,520	106,871	1,274,648	18,800,826	6.78
1990.....	1,532,259	85,565	1,446,694	18,715,090	7.73
1991.....	1,773,313	129,244	1,644,068	19,035,156	8.64
1992.....	2,137,504	216,282	1,921,222	19,544,364	9.83
1993.....	2,350,115	140,183	2,209,931	20,279,095	10.90
1994.....	2,623,839	161,738	2,462,101	20,707,717	11.89
1995.....	2,841,048	154,119	2,686,929	21,580,665	12.45
1996.....	2,937,413	153,393	2,784,020	21,966,616	12.67
1997.....	2,994,173	157,006	2,837,167	22,737,342	12.48
1998.....	3,152,058	159,007	2,993,051	22,245,956	13.45
1999.....	3,585,505	163,415	3,422,090	22,405,151	15.27
2000.....	3,781,603	243,716	3,537,887	23,333,121	15.16
2001.....	3,976,939	373,278	3,603,661	22,238,624	16.20
2002.....	4,015,463	516,233	3,499,230	23,007,017	15.21
2003.....	3,943,749	679,922	3,263,827	22,276,502	14.65
2004.....	4,258,558	854,138	3,404,421	22,388,975	15.21
2005.....	4,341,034	728,601	3,612,434	22,010,596	16.41
2006.....	4,186,281	723,958	3,462,323	<sup>R</sup> 21,652,886	15.99
2007.....	4,607,582	822,454	3,785,128	23,052,927	16.42

-- Not applicable.

<sup>R</sup> = Revised data.

**Notes:** Totals may not equal sum of components due to independent rounding. Geographic coverage is the continental United States including Alaska.

**Sources:** **Total Consumption:** *Historical Natural Gas Annual* for 1955 through 2002; *Natural Gas Monthly*, August 2008, for 2003 through 2007. **All Other Data:** 1955-1971: Federal Power Commission, informally collected by letter. 1972-1994: Form FPC-14, "Annual Report for Importers and Exporters of Natural Gas." 1995 to present: Energy Information Administration, based on data from the Office of Fossil Energy, U.S. Department of Energy, *Natural Gas Imports and Exports*.

**Table SR2. Summary of U.S. Natural Gas Imports, 2006-2007**

Source	Volume			Average Btu		Revenue		Average Price					
	(million cubic feet)		Percent Change	(cubic foot)		(thousand dollars)		(dollars/ thousand cubic feet)		Percent Change	(dollars/million btu)		Percent Change
	2006	2007		2006	2007	2006	2007	2006	2007		2006	2007	
<b>Pipeline</b>													
Canada .....	3,589,995	3,782,708	5.37	1,019	1,019	24,526,030	25,850,681	6.83	6.83	0.03	6.70	6.71	.03
Mexico .....	12,749	54,062	324.06	1,000	1,000	72,058	354,053	5.65	6.55	15.87	5.65	6.55	15.87
<b>Total .....</b>	<b>3,602,744</b>	<b>3,836,770</b>	<b>6.50</b>	<b>1,019</b>	<b>1,019</b>	<b>24,598,088</b>	<b>26,204,734</b>	<b>6.83</b>	<b>6.83</b>	<b>0.03</b>	<b>6.70</b>	<b>6.70</b>	<b>.03</b>
<b>LNG</b>													
Algeria.....	17,449	77,299	343.01	1,090	1,090	148,032	554,173	8.48	7.17	-15.50	7.78	6.58	-15.5
Egypt.....	119,528	114,580	-4.14	1,040	1,040	813,247	782,251	6.80	6.83	0.34	6.54	6.56	.34
Equatorial Guinea.....	0	17,795	--	--	1,065	0	112,437	--	6.32	--	--	5.93	--
Nigeria .....	57,292	95,028	65.87	1,110	1,110	388,321	669,806	6.78	7.05	3.99	6.11	6.35	3.99
Qatar.....	0	18,352	--	1,125	1,125	0	133,195	--	7.26	--	--	6.45	--
Trinidad and Tobago.....	389,268	447,758	15.03	1,051	1,051	2,848,741	3,198,763	7.32	7.14	-2.38	6.96	6.80	-2.38
<b>Total .....</b>	<b>583,537</b>	<b>770,812</b>	<b>32.09</b>	<b>1,056</b>	<b>1,063</b>	<b>4,198,341</b>	<b>5,450,624</b>	<b>7.19</b>	<b>7.07</b>	<b>-1.71</b>	<b>6.81</b>	<b>6.69</b>	<b>-1.84</b>
<b>Grand Total.....</b>	<b>4,186,281</b>	<b>4,607,582</b>	<b>10.06</b>	<b>1,024</b>	<b>1,026</b>	<b>28,796,429</b>	<b>31,655,359</b>	<b>6.88</b>	<b>6.87</b>	<b>-0.12</b>	<b>6.72</b>	<b>6.70</b>	<b>-0.22</b>

-- Not applicable.

<sup>R</sup> = Revised data.

**Notes:** Totals may not equal sum of components due to independent rounding. Geographic coverage is the continental United States including Alaska. Prices for

LNG imports are reported as "landed," defined as received at the terminal.

**Source:** Energy Information Administration based on data from the Office of Fossil Energy, U.S. Department of Energy, *Natural Gas Imports and Exports*.

**Table SR3. Summary of U.S. Natural Gas Exports, 2006-2007**

Source	Volume			Average Btu		Revenue		Average Price					
	(million cubic feet)		Percent Change	(cubic foot)		(thousand dollars)		(dollars/ thousand cubic feet)		Percent Change	(dollars/million btu)		Percent Change
	2006	2007		2006	2007	2006	2007	2006	2007		2006	2007	
<b>Pipeline</b>													
Canada.....	341,065	482,196	41.38	1,019	1,019	<sup>R</sup> 2,497,555	3,459,307	<sup>R</sup> 7.32	7.17	-2.03	7.19	7.04	-2.03
Mexico .....	321,955	291,773	-9.37	1,000	1,000	2,079,755	1,926,253	6.46	6.60	2.20	6.46	6.60	2.2
<b>Total .....</b>	<b>663,020</b>	<b>773,969</b>	<b>16.73</b>	<b>1,010</b>	<b>1,012</b>	<b>4,577,310</b>	<b>5,385,561</b>	<b>6.90</b>	<b>6.96</b>	<b>0.79</b>	<b>6.84</b>	<b>6.90</b>	<b>.87</b>
<b>LNG</b>													
Canada.....	0	2	--	--	1,000	0	20	--	12.07	--	--	12.07	--
Japan.....	60,765	46,501	-23.47	1,010	1,010	364,494	277,774	6.00	5.97	-0.41	5.94	5.91	-0.41
Mexico .....	173	87	-49.69	1,000	1,000	2,319	1,158	13.40	13.30	-0.75	13.40	13.30	-0.75
Russia .....	0	1,895	--	--	1,010	0	22,967	--	12.12	--	--	12.00	--
<b>Total .....</b>	<b>60,938</b>	<b>48,485</b>	<b>-20.44</b>	<b>1,010</b>	<b>1,010</b>	<b>366,813</b>	<b>301,920</b>	<b>6.02</b>	<b>6.23</b>	<b>3.45</b>	<b>5.96</b>	<b>6.17</b>	<b>3.45</b>
<b>Grand Total .....</b>	<b>723,958</b>	<b>822,454</b>	<b>13.61</b>	<b>1,010</b>	<b>1,012</b>	<b>4,944,123</b>	<b>5,687,480</b>	<b>6.83</b>	<b>6.92</b>	<b>1.26</b>	<b>6.76</b>	<b>6.85</b>	<b>1.34</b>

-- Not applicable.

<sup>R</sup> = Revised data.

**Notes:** Totals may not equal sum of components due to independent rounding. Geographic coverage is the continental United States including Alaska.

**Source:** Energy Information Administration based on data from the Office of Fossil Energy, U.S. Department of Energy, *Natural Gas Imports and Exports*.

**Table SR4. Historical Summary of U.S. Natural Gas Imports, 1955-2007**  
(Volumes in Million Cubic Feet; Average Prices in Dollars per Thousand Cubic Feet)

Year	Imports From								
	Pipeline		LNG						
	Canada	Mexico	Algeria	Australia	Brunei	Canada	Egypt	Equatorial Guinea	Indonesia
1955.....	10,881	7	0	0	0	0	0	0	0
1956.....	10,374	6	0	0	0	0	0	0	0
1957.....	20,971	16,970	0	0	0	0	0	0	0
1958.....	89,586	46,211	0	0	0	0	0	0	0
1959.....	83,061	50,929	0	0	0	0	0	0	0
1960.....	108,657	46,989	0	0	0	0	0	0	0
1961.....	167,104	51,756	0	0	0	0	0	0	0
1962.....	350,438	51,096	0	0	0	0	0	0	0
1963.....	356,455	49,749	0	0	0	0	0	0	0
1964.....	390,721	52,605	0	0	0	0	0	0	0
1965.....	404,686	51,708	0	0	0	0	0	0	0
1966.....	430,189	49,591	0	0	0	0	0	0	0
1967.....	513,255	50,971	0	0	0	0	0	0	0
1968.....	604,462	47,423	0	0	0	0	0	0	0
1969.....	680,106	46,845	0	0	0	0	0	0	0
1970.....	778,687	41,336	757	0	0	0	0	0	0
1971.....	910,926	20,689	1,433	0	0	1,500	0	0	0
1972.....	1,009,093	8,140	2,032	0	0	230	0	0	0
1973.....	1,027,216	1,632	3,388	0	0	667	0	0	0
1974.....	959,063	222	0	0	0	0	0	0	0
1975.....	948,115	0	4,893	0	0	0	0	0	0
1976.....	953,613	0	10,155	0	0	0	0	0	0
1977.....	996,723	2,384	11,324	0	0	572	0	0	0
1978.....	881,123	0	84,422	0	0	0	0	0	0
1979.....	1,000,775	0	252,608	0	0	0	0	0	0
1980.....	796,507	102,410	85,850	0	0	0	0	0	0
1981.....	762,107	105,013	36,824	0	0	6	0	0	0
1982.....	783,407	94,794	55,136	0	0	0	0	0	0
1983.....	711,923	75,361	131,124	0	0	0	0	0	0
1984.....	755,368	51,502	36,191	0	0	0	0	0	0
1985.....	926,056	0	23,659	0	0	0	0	0	0
1986.....	748,780	0	0	0	0	0	0	0	1,669
1987.....	992,532	0	0	0	0	0	0	0	0
1988.....	1,276,322	0	17,490	0	0	0	0	0	0
1989.....	1,339,357	0	42,163	0	0	0	0	0	0
1990.....	1,448,065	0	84,193	0	0	0	0	0	0
1991.....	1,709,716	0	63,596	0	0	0	0	0	0
1992.....	2,094,387	0	43,116	0	0	0	0	0	0
1993.....	2,266,751	1,678	81,685	0	0	0	0	0	0
1994.....	2,566,049	7,013	50,778	0	0	0	0	0	0
1995.....	2,816,408	6,722	17,918	0	0	0	0	0	0
1996.....	2,883,277	13,862	35,325	0	0	0	0	0	0
1997.....	2,899,152	17,243	65,675	9,686	0	0	0	0	0
1998.....	3,052,073	14,532	68,567	11,634	0	0	0	0	0
1999.....	3,367,545	54,530	75,763	11,904	0	0	0	0	0
2000.....	3,543,966	11,601	46,947	5,945	0	0	0	0	2,760
2001.....	3,728,537	10,276	64,945	2,394	0	0	0	0	0
2002.....	3,784,978	1,755	26,584	0	2,401	0	0	0	0
2003.....	3,437,230	0	53,423	0	0	0	0	0	0
2004.....	3,606,543	0	120,343	14,990	0	0	0	0	0
2005.....	3,700,454	9,320	97,157	0	0	0	72,540	0	0
2006.....	3,589,995	12,749	17,449	0	0	0	119,528	0	0
2007.....	3,782,708	54,062	77,299	0	0	0	114,580	17,795	0

See footnotes at end of table.



**Table SR4. Historical Summary of U.S. Natural Gas Imports, 1955-2007**

(Volumes in Million Cubic Feet; Average Prices in Dollars per Thousand Cubic Feet) – Continued

Year	Imports From							Total Imports <sup>b</sup>	Average Price
	LNG								
	Malaysia	Nigeria	Oman	Qatar	Trinidad and Tobago	United Arab Emirates	Other <sup>a</sup>		
1955 .....	0	0	0	0	0	0	0	10,888	NA
1956 .....	0	0	0	0	0	0	0	10,380	NA
1957 .....	0	0	0	0	0	0	0	37,941	NA
1958 .....	0	0	0	0	0	0	0	135,797	NA
1959 .....	0	0	0	0	0	0	0	133,990	NA
1960 .....	0	0	0	0	0	0	0	155,646	NA
1961 .....	0	0	0	0	0	0	0	218,860	NA
1962 .....	0	0	0	0	0	0	0	401,534	NA
1963 .....	0	0	0	0	0	0	0	406,204	NA
1964 .....	0	0	0	0	0	0	0	443,326	NA
1965 .....	0	0	0	0	0	0	0	456,394	NA
1966 .....	0	0	0	0	0	0	0	479,780	NA
1967 .....	0	0	0	0	0	0	0	564,226	NA
1968 .....	0	0	0	0	0	0	0	651,885	NA
1969 .....	0	0	0	0	0	0	0	726,951	NA
1970 .....	0	0	0	0	0	0	0	820,780	NA
1971 .....	0	0	0	0	0	0	0	934,548	NA
1972 .....	0	0	0	0	0	0	0	1,019,496	0.31
1973 .....	0	0	0	0	0	0	0	1,032,901	0.35
1974 .....	0	0	0	0	0	0	0	959,284	0.55
1975 .....	0	0	0	0	0	0	0	953,008	1.21
1976 .....	0	0	0	0	0	0	0	963,768	1.72
1977 .....	0	0	0	0	0	0	0	1,011,002	1.98
1978 .....	0	0	0	0	0	0	0	965,545	2.13
1979 .....	0	0	0	0	0	0	0	1,253,383	2.49
1980 .....	0	0	0	0	0	0	0	984,767	4.28
1981 .....	0	0	0	0	0	0	0	903,949	4.88
1982 .....	0	0	0	0	0	0	0	933,336	5.03
1983 .....	0	0	0	0	0	0	0	918,407	4.78
1984 .....	0	0	0	0	0	0	0	843,060	4.08
1985 .....	0	0	0	0	0	0	0	949,715	3.21
1986 .....	0	0	0	0	0	0	0	750,449	2.43
1987 .....	0	0	0	0	0	0	0	992,532	1.95
1988 .....	0	0	0	0	0	0	0	1,293,812	1.84
1989 .....	0	0	0	0	0	0	0	1,381,520	1.82
1990 .....	0	0	0	0	0	0	0	1,532,259	1.94
1991 .....	0	0	0	0	0	0	0	1,773,313	1.83
1992 .....	0	0	0	0	0	0	0	2,137,504	1.85
1993 .....	0	0	0	0	0	0	0	2,350,115	2.03
1994 .....	0	0	0	0	0	0	0	2,623,839	1.87
1995 .....	0	0	0	0	0	0	0	2,841,048	1.49
1996 .....	0	0	0	0	0	4,949	0	2,937,413	1.97
1997 .....	0	0	0	0	0	2,417	0	2,994,173	2.17
1998 .....	0	0	0	0	0	5,252	0	3,152,058	1.97
1999 .....	2,576	0	0	19,697	50,777	2,713	0	3,585,505	2.24
2000 .....	0	12,654	9,998	46,057	98,949	2,725	0	3,781,603	3.95
2001 .....	0	37,966	12,055	22,758	98,009	0	0	3,976,939	4.43
2002 .....	2,423	8,123	3,013	35,081	151,104	0	0	4,015,463	3.15
2003 .....	2,704	50,067	8,632	13,623	378,069	0	0	3,943,749	5.17
2004 .....	19,999	11,818	9,412	11,854	462,100	0	1,500	4,258,558	5.81
2005 .....	8,719	8,149	2,464	2,986	439,246	0	0	4,341,034	8.12
2006 .....	0	57,292	0	0	389,268	0	0	4,186,281	6.88
2007 .....	0	95,028	0	18,352	447,758	0	0	4,607,582	6.87

<sup>a</sup> The point of origin for volumes of imported LNG was unassigned in the reports to the Office of Fossil Energy.

<sup>b</sup> Volumes reported for 1966 through 1997 are on a pressure base of 14.73 pounds per square inch absolute and 60 degrees Fahrenheit. Volumes for 1955 through 1965 are as reported.

<sup>NA</sup> Not available.

**Notes:** Totals may not equal sum of components due to independent rounding. Geographic coverage is the continental United States including Alaska. Prior to 2003,

prices for LNG imports may be reported as either "landed," defined as received at the terminal or "tailgate," defined as regasification at the terminal. For 2003 through 2007, all prices for LNG imports are reported as "landed."

**Sources:** 1955-1971: Federal Power Commission, informally collected by letter. 1972-1994: Form FPC-14, "Annual Report for Importers and Exporters of Natural Gas." 1995 to present: Energy Information Administration, based on data from the Office of Fossil Energy, U.S. Department of Energy, *Natural Gas Imports and Exports*.

**Table SR5. Historical Summary of U.S. Natural Gas Exports, 1955-2007**

(Volumes in Million Cubic Feet; Average Prices in Dollars per Thousand Cubic Feet)

Year	Exports to						Total Exports	Average Price
	Pipeline		LNG					
	Canada	Mexico	Canada	Japan	Mexico	Russia		
1955	11,467	19,562	0	0	0	0	31,029	NA
1956	16,819	19,144	0	0	0	0	35,963	NA
1957	30,867	10,788	0	0	0	0	41,655	NA
1958	32,129	6,590	0	0	0	0	38,719	NA
1959	11,739	6,674	0	0	0	0	18,413	NA
1960	5,759	5,573	0	0	0	0	11,332	NA
1961	5,577	5,170	0	0	0	0	10,747	NA
1962	5,574	10,240	0	0	0	0	15,814	NA
1963	6,879	10,078	0	0	0	0	16,957	NA
1964	9,763	9,840	0	0	0	0	19,603	NA
1965	17,979	8,153	0	0	0	0	26,132	NA
1966	20,281	4,358	0	0	0	0	24,639	NA
1967	70,456	11,158	0	0	0	0	81,614	NA
1968	81,647	12,098	0	0	0	0	93,745	NA
1969	34,931	13,391	0	2,982	0	0	51,304	NA
1970	10,878	14,678	0	44,257	0	0	69,813	NA
1971	14,349	15,632	0	50,231	0	0	80,212	NA
1972	15,553	14,579	0	47,882	0	0	78,013	0.51
1973	14,824	13,999	0	48,346	0	0	77,169	0.54
1974	13,263	13,268	0	50,258	0	0	76,789	0.72
1975	10,219	9,454	0	53,002	0	0	72,675	1.25
1976	7,506	7,425	0	49,779	0	0	64,711	1.55
1977	31	3,940	0	51,655	0	0	55,626	1.92
1978	66	4,033	0	48,434	0	0	52,532	2.13
1979	76	4,308	0	51,289	0	0	55,673	2.29
1980	113	3,886	0	44,732	0	0	48,731	4.70
1981	106	3,337	0	55,929	0	0	59,372	5.90
1982	162	1,705	0	49,861	0	0	51,728	5.81
1983	136	1,646	0	52,857	0	0	54,639	5.10
1984	127	1,786	0	52,840	0	0	54,753	4.92
1985	178	2,207	0	52,883	0	0	55,268	4.77
1986	9,203	1,896	0	50,172	0	0	61,271	2.81
1987	3,297	2,125	0	48,599	0	0	54,020	3.07
1988	19,738	2,327	0	51,573	0	0	73,638	2.74
1989	38,443	17,004	0	51,424	0	0	106,871	2.51
1990	17,359	15,659	0	52,546	0	0	85,565	3.10
1991	14,791	60,448	0	54,005	0	0	129,244	2.59
1992	67,777	95,973	0	52,532	0	0	216,282	2.25
1993	44,518	39,676	0	55,989	0	0	140,183	2.59
1994	52,556	46,500	0	62,682	0	0	161,738	2.50
1995	27,554	61,283	0	65,283	0	0	154,119	2.39
1996	51,905	33,840	0	67,648	0	0	153,393	2.97
1997	56,447	38,372	0	62,187	0	0	157,006	3.02
1998	39,891	53,133	0	65,951	33	0	159,007	2.45
1999	38,508	61,025	0	63,607	275	0	163,415	2.61
2000	72,586	105,102	0	65,610	418	0	243,716	4.10
2001	166,690	140,370	0	65,753	465	0	373,278	4.19
2002	189,313	263,078	0	63,439	403	0	516,233	3.41
2003	270,988	342,859	0	65,698	376	0	679,922	5.54
2004	394,585	397,086	0	62,099	368	0	854,138	6.09
2005	358,280	304,954	0	65,124	242	0	728,601	7.59
2006	341,065	321,955	0	60,765	173	0	723,958	6.83
2007	482,196	291,773	2	46,501	87	1,895	822,454	6.92

<sup>NA</sup> Not available.

**Notes:** Totals may not equal sum of components due to independent rounding. Geographic coverage is the continental United States including Alaska. LNG exports to Mexico are shipped by truck.

**Sources:** 1955-1971: Federal Power Commission, informally collected by letter.

1972-1994: Form FPC-14, "Annual Report for Importers and Exporters of Natural Gas." 1995 to present: Energy Information Administration, based on data from the Office of Fossil Energy, U.S. Department of Energy, *Natural Gas Imports and Exports*.

**Table SR6. U.S. Natural Gas Imports by Point of Entry, 2006-2007**  
(Volumes in Million Cubic Feet; Average Prices in Dollars per Thousand Cubic Feet)

Point of Entry	2007							
	Total		December		November		October	
	Volume	Average Price	Volume	Average Price	Volume	Average Price	Volume	Average Price
<b>Pipeline</b>								
Canada								
Pacific Northwest								
Sumas, WA.....	254,086	6.61	29,652	7.78	24,372	7.47	24,635	6.11
West								
Eastport, ID.....	704,429	6.31	68,801	6.82	60,169	6.65	64,802	5.93
Midwest								
Babb, MT.....	4,580	6.46	2	5.88	568	6.40	72	6.44
Detroit, MI.....	81	8.28	0	--	0	--	0	--
Marysville, MI.....	876	7.59	876	7.59	0	--	0	--
Noyes, MN.....	499,863	6.72	54,965	7.32	43,345	7.08	36,408	6.23
Port of del Bonita, MT..	152	6.86	12	7.94	12	7.79	13	7.34
Port of Morgan, MT.....	763,912	6.67	73,032	7.36	60,667	6.93	65,998	6.13
Portal, ND.....	34	7.45	2	10.54	1	10.40	0	11.21
Sherwood, ND <sup>a</sup> .....	465,939	6.75	39,207	7.38	37,970	6.90	37,744	6.24
St. Clair, MI.....	9,633	6.97	1,234	7.22	763	6.01	1,542	6.65
Sweetgrass, MT.....	1,539	6.12	118	6.57	122	6.38	121	6.11
Warroad, MN.....	4,813	6.75	524	6.93	431	6.95	346	6.11
Whitlash, MT.....	8,945	6.00	796	6.54	751	6.34	690	5.65
<b>Total.....</b>	<b>1,760,368</b>	<b>6.70</b>	<b>170,767</b>	<b>7.35</b>	<b>144,630</b>	<b>6.96</b>	<b>142,935</b>	<b>6.19</b>
Northeast								
Calais, ME.....	106,643	7.57	10,212	9.61	9,490	7.35	8,669	6.59
Champlain, NY.....	17,666	5.23	1,577	5.33	1,450	5.33	1,205	5.07
Grand Island, NY.....	88,886	7.41	10,193	7.83	5,339	7.77	4,963	6.92
Highgate Springs, VT..	8,021	8.51	1,243	9.18	914	8.34	492	7.58
Massena, NY.....	6,887	7.78	901	8.48	655	8.17	395	7.41
Niagara Falls, NY.....	356,529	7.36	29,548	7.91	25,339	7.79	29,206	6.86
Pittsburg, NH.....	56,879	7.52	7,795	7.97	3,903	7.84	3,836	6.92
Waddington, NY.....	422,315	7.57	41,455	8.08	34,805	8.01	32,547	6.97
<b>Total.....</b>	<b>1,063,825</b>	<b>7.45</b>	<b>102,922</b>	<b>8.12</b>	<b>81,895</b>	<b>7.80</b>	<b>81,313</b>	<b>6.86</b>
<b>Total (Canada).....</b>	<b>3,782,708</b>	<b>6.83</b>	<b>372,142</b>	<b>7.50</b>	<b>311,065</b>	<b>7.16</b>	<b>313,685</b>	<b>6.31</b>
Mexico								
Texas								
Alamo, TX.....	22,197	6.71	1,765	6.67	1,435	6.10	883	6.49
Hidalgo, TX.....	5,259	6.23	320	6.54	0	--	0	--
McAllen, TX.....	26,605	6.48	1,891	6.58	1,568	5.84	718	6.17
<b>Total (Mexico).....</b>	<b>54,062</b>	<b>6.55</b>	<b>3,976</b>	<b>6.62</b>	<b>3,003</b>	<b>5.96</b>	<b>1,601</b>	<b>6.35</b>
<b>Total Pipeline.....</b>	<b>3,836,770</b>	<b>6.83</b>	<b>376,118</b>	<b>7.49</b>	<b>314,068</b>	<b>7.15</b>	<b>315,286</b>	<b>6.31</b>
<b>LNG</b>								
Gulf of Mexico.....	17,259	8.36	0	--	0	--	0	--
Lake Charles, LA.....	251,455	6.88	0	--	0	--	1,451	6.30
Cove Point, MD.....	148,231	7.26	0	--	2,973	7.56	5,818	6.85
Everett, MA.....	183,624	7.32	16,067	8.04	13,024	8.42	14,093	7.23
Elba Island, GA.....	170,243	6.79	4,759	7.24	10,542	7.30	10,576	6.39
<b>Total LNG.....</b>	<b>770,812</b>	<b>7.07</b>	<b>20,826</b>	<b>7.86</b>	<b>26,539</b>	<b>7.88</b>	<b>31,939</b>	<b>6.84</b>
<b>Total Imports.....</b>	<b>4,607,582</b>	<b>6.87</b>	<b>396,945</b>	<b>7.51</b>	<b>340,607</b>	<b>7.21</b>	<b>347,224</b>	<b>6.35</b>

See footnotes at end of table.

**Table SR6. U.S. Natural Gas Imports by Point of Entry, 2006-2007**  
(Volumes in Million Cubic Feet; Average Prices in Dollars per Thousand Cubic Feet) – Continued

Point of Entry	2007							
	September		August		July		June	
	Volume	Average Price	Volume	Average Price	Volume	Average Price	Volume	Average Price
<b>Pipeline</b>								
Canada								
Pacific Northwest								
Sumas, WA.....	21,923	5.15	21,856	5.38	21,155	5.92	16,245	6.87
West								
Eastport, ID.....	60,488	5.11	61,225	5.24	61,989	6.00	55,084	6.74
Midwest								
Babb, MT.....	92	5.01	148	4.89	467	5.61	803	6.33
Detroit, MI.....	0	--	0	--	0	--	0	--
Marysville, MI.....	0	--	0	--	0	--	0	--
Noyes, MN.....	38,267	5.39	40,217	5.75	37,839	6.38	32,414	7.17
Port of del Bonita, MT..	11	5.98	13	5.88	13	7.01	13	6.95
Port of Morgan, MT.....	72,218	5.28	72,079	6.03	67,589	6.35	64,095	7.20
Portal, ND.....	0	11.21	0	11.21	0	11.21	0	11.16
Sherwood, ND <sup>a</sup> .....	37,889	5.36	38,790	5.79	37,578	6.51	38,120	7.33
St. Clair, MI.....	681	6.28	1,053	6.45	604	7.14	227	7.51
Sweetgrass, MT.....	113	4.98	120	4.88	126	5.23	130	6.24
Warroad, MN.....	368	5.19	287	5.58	256	6.24	300	7.02
Whitlash, MT.....	751	4.71	799	4.87	746	5.61	733	6.33
<b>Total.....</b>	<b>150,390</b>	<b>5.33</b>	<b>153,506</b>	<b>5.89</b>	<b>145,218</b>	<b>6.40</b>	<b>136,835</b>	<b>7.22</b>
Northeast								
Calais, ME.....	10,576	6.01	10,766	6.44	9,582	6.71	8,796	7.70
Champlain, NY.....	1,350	5.05	1,501	5.06	1,482	5.05	1,448	5.06
Grand Island, NY.....	5,501	5.96	7,181	6.38	4,347	6.91	4,434	7.91
Highgate Springs, VT..	363	6.51	338	7.28	332	8.17	345	9.06
Massena, NY.....	329	5.68	358	5.78	350	6.20	312	6.83
Niagara Falls, NY.....	29,436	5.97	34,705	6.51	29,853	7.03	29,434	7.96
Pittsburg, NH.....	3,127	5.93	6,698	6.55	4,514	6.86	4,085	7.85
Waddington, NY.....	34,285	6.12	36,571	6.64	36,029	7.16	34,191	8.00
<b>Total.....</b>	<b>84,966</b>	<b>6.02</b>	<b>98,118</b>	<b>6.52</b>	<b>86,489</b>	<b>7.00</b>	<b>83,045</b>	<b>7.89</b>
<b>Total (Canada).....</b>	<b>317,767</b>	<b>5.46</b>	<b>334,705</b>	<b>5.92</b>	<b>314,851</b>	<b>6.45</b>	<b>291,209</b>	<b>7.30</b>
Mexico								
Texas								
Alamo, TX.....	422	5.90	1,622	6.34	2,275	6.04	1,532	7.11
Hidalgo, TX.....	400	5.33	54	5.26	507	5.81	0	--
McAllen, TX.....	1,141	5.31	2,682	5.80	2,598	6.08	2,142	7.24
<b>Total (Mexico).....</b>	<b>1,963</b>	<b>5.44</b>	<b>4,357</b>	<b>5.99</b>	<b>5,381</b>	<b>6.04</b>	<b>3,674</b>	<b>7.19</b>
<b>Total Pipeline.....</b>	<b>319,730</b>	<b>5.46</b>	<b>339,062</b>	<b>5.92</b>	<b>320,231</b>	<b>6.45</b>	<b>294,883</b>	<b>7.30</b>
<b>LNG</b>								
Gulf of Mexico.....	0	--	3,128	9.15	5,838	7.30	5,647	9.14
Lake Charles, LA.....	9,289	5.28	21,064	5.88	32,811	6.69	49,935	7.33
Cove Point, MD.....	5,799	5.91	23,460	6.39	23,258	7.17	0	--
Everett, MA.....	11,371	6.51	16,797	6.48	16,850	7.16	14,191	6.83
Elba Island, GA.....	15,194	5.31	23,023	6.02	19,587	6.67	16,815	7.56
<b>Total LNG.....</b>	<b>41,654</b>	<b>5.71</b>	<b>87,471</b>	<b>6.29</b>	<b>98,344</b>	<b>6.92</b>	<b>86,587</b>	<b>7.41</b>
<b>Total Imports.....</b>	<b>361,383</b>	<b>5.49</b>	<b>426,534</b>	<b>6.00</b>	<b>418,576</b>	<b>6.56</b>	<b>381,470</b>	<b>7.32</b>

See footnotes at end of table.

**Table SR6. U.S. Natural Gas Imports by Point of Entry, 2006-2007**  
(Volumes in Million Cubic Feet; Average Prices in Dollars per Thousand Cubic Feet) – Continued

Point of Entry	2007							
	May		April		March		February	
	Volume	Average Price	Volume	Average Price	Volume	Average Price	Volume	Average Price
<b>Pipeline</b>								
Canada								
Pacific Northwest								
Sumas, WA.....	17,921	7.02	18,070	6.84	15,610	7.12	19,762	7.03
West								
Eastport, ID.....	53,800	6.92	47,280	6.60	49,022	6.93	55,070	6.71
Midwest								
Babb, MT.....	1,358	6.89	816	6.85	58	6.49	62	6.62
Detroit, MI.....	0	--	81	8.28	0	--	0	--
Marysville, MI.....	0	--	0	--	0	--	0	--
Noyes, MN.....	33,194	7.32	30,973	7.28	49,963	7.16	51,571	7.17
Port of del Bonita, MT..	14	7.30	13	7.01	13	6.59	12	6.76
Port of Morgan, MT.....	52,470	7.19	56,454	6.95	56,423	7.25	61,461	7.25
Portal, ND.....	0	11.00	13	6.68	5	7.12	6	7.34
Sherwood, ND <sup>a</sup> .....	40,841	7.32	39,435	7.12	40,545	7.19	37,306	7.40
St. Clair, MI.....	747	7.93	160	7.89	992	7.55	647	7.70
Sweetgrass, MT.....	133	6.66	132	6.78	143	6.44	136	6.89
Warroad, MN.....	350	7.15	467	7.24	489	7.66	498	7.48
Whitlash, MT.....	812	6.61	769	6.48	684	6.50	649	6.41
<b>Total.....</b>	<b>129,919</b>	<b>7.26</b>	<b>129,312</b>	<b>7.08</b>	<b>149,316</b>	<b>7.21</b>	<b>152,347</b>	<b>7.26</b>
Northeast								
Calais, ME.....	9,888	8.20	8,058	8.39	7,723	7.86	7,136	9.21
Champlain, NY.....	1,462	5.06	1,439	5.12	1,616	5.42	1,501	5.54
Grand Island, NY.....	4,633	7.96	7,410	8.11	12,449	8.03	12,302	7.71
Highgate Springs, VT..	477	9.01	799	8.82	766	8.94	1,014	8.52
Massena, NY.....	368	7.61	601	7.48	781	8.65	931	8.52
Niagara Falls, NY.....	30,236	8.08	30,668	8.06	28,904	7.98	30,417	7.75
Pittsburg, NH.....	2,609	8.09	3,868	8.22	5,146	8.35	5,902	8.02
Waddington, NY.....	31,810	8.22	31,194	7.83	37,287	8.43	34,876	8.22
<b>Total.....</b>	<b>81,484</b>	<b>8.09</b>	<b>84,037</b>	<b>7.97</b>	<b>94,671</b>	<b>8.14</b>	<b>94,078</b>	<b>8.03</b>
<b>Total (Canada).....</b>	<b>283,124</b>	<b>7.42</b>	<b>278,700</b>	<b>7.25</b>	<b>308,619</b>	<b>7.44</b>	<b>321,258</b>	<b>7.37</b>
Mexico								
Texas								
Alamo, TX.....	1,362	7.35	4,344	6.98	1,927	6.82	3,667	7.22
Hidalgo, TX.....	150	6.97	1,390	6.69	729	6.45	635	7.34
McAllen, TX.....	1,257	7.54	3,661	6.88	3,656	6.71	3,213	7.10
<b>Total (Mexico).....</b>	<b>2,770</b>	<b>7.42</b>	<b>9,395</b>	<b>6.90</b>	<b>6,312</b>	<b>6.71</b>	<b>7,515</b>	<b>7.18</b>
<b>Total Pipeline.....</b>	<b>285,893</b>	<b>7.42</b>	<b>288,095</b>	<b>7.24</b>	<b>314,931</b>	<b>7.43</b>	<b>328,773</b>	<b>7.37</b>
<b>LNG</b>								
Gulf of Mexico.....	2,646	8.13	0	--	0	9.41	0	--
Lake Charles, LA.....	41,667	7.22	44,555	6.99	33,710	7.25	8,635	6.90
Cove Point, MD.....	22,577	8.02	20,633	7.99	23,336	7.83	6,006	8.65
Everett, MA.....	11,348	7.55	19,764	6.72	16,136	7.69	14,001	7.92
Elba Island, GA.....	16,081	7.46	13,790	7.53	13,666	7.54	15,459	7.11
<b>Total LNG.....</b>	<b>94,319</b>	<b>7.52</b>	<b>98,742</b>	<b>7.22</b>	<b>86,848</b>	<b>7.53</b>	<b>44,101</b>	<b>7.54</b>
<b>Total Imports.....</b>	<b>380,213</b>	<b>7.45</b>	<b>386,837</b>	<b>7.24</b>	<b>401,779</b>	<b>7.45</b>	<b>372,874</b>	<b>7.39</b>

See footnotes at end of table.

**Table SR6. U.S. Natural Gas Imports by Point of Entry, 2006-2007**  
(Volumes in Million Cubic Feet; Average Prices in Dollars per Thousand Cubic Feet) – Continued

Point of Entry	2007		2006					
	January		Total		December		November	
	Volume	Average Price	Volume	Average Price	Volume	Average Price	Volume	Average Price
<b>Pipeline</b>								
Canada								
Pacific Northwest								
Sumas, WA.....	22,885	6.48	255,743	6.21	29,757	7.21	19,482	6.30
West								
Eastport, ID.....	66,699	6.40	690,781	6.22	64,372	6.95	59,912	6.55
Midwest								
Babb, MT.....	132	6.29	7,343	5.44	58	6.15	56	6.71
Detroit, MI.....	0	--	0	--	0	--	0	--
Marysville, MI.....	0	--	24	7.07	0	--	0	--
Noyes, MN.....	50,708	6.18	419,284	6.82	46,076	7.64	45,692	7.24
Port of del Bonita, MT..	13	5.79	0	--	0	--	0	--
Port of Morgan, MT.....	61,427	6.51	665,804	6.78	58,817	7.56	44,106	7.25
Portal, ND.....	8	7.71	2,565	5.50	25	4.71	20	5.44
Sherwood, ND <sup>a</sup> .....	40,513	6.37	511,488	6.72	42,021	7.40	40,977	7.28
St. Clair, MI.....	982	6.73	10,410	7.44	1,346	7.43	1,839	7.74
Sweetgrass, MT.....	148	6.00	2,012	5.81	152	6.35	145	6.99
Warroad, MN.....	497	6.40	3,563	7.94	491	8.36	439	6.84
Whitlash, MT.....	764	6.05	9,120	5.59	191	6.27	681	6.62
<b>Total.....</b>	<b>155,192</b>	<b>6.36</b>	<b>1,631,612</b>	<b>6.76</b>	<b>149,177</b>	<b>7.54</b>	<b>133,955</b>	<b>7.26</b>
Northeast								
Calais, ME.....	5,748	7.36	105,650	7.73	6,569	8.16	7,444	7.97
Champlain, NY.....	1,633	5.55	17,721	5.04	1,584	5.48	1,466	5.41
Grand Island, NY.....	10,135	6.67	80,907	7.61	7,790	8.28	6,670	7.69
Highgate Springs, VT..	939	8.54	8,404	8.25	1,014	9.40	1,068	8.14
Massena, NY.....	908	8.20	6,588	8.95	722	9.46	601	8.93
Niagara Falls, NY.....	28,783	6.60	354,703	7.43	27,170	8.38	24,242	7.87
Pittsburg, NH.....	5,397	7.40	31,853	7.26	3,489	7.88	2,909	8.33
Waddington, NY.....	37,264	7.10	406,033	7.62	36,418	8.42	32,730	7.97
<b>Total.....</b>	<b>90,808</b>	<b>6.93</b>	<b>1,011,860</b>	<b>7.52</b>	<b>84,757</b>	<b>8.32</b>	<b>77,130</b>	<b>7.89</b>
<b>Total (Canada).....</b>	<b>335,584</b>	<b>6.53</b>	<b>3,589,995</b>	<b>6.83</b>	<b>328,063</b>	<b>7.59</b>	<b>290,480</b>	<b>7.21</b>
Mexico								
Texas								
Alamo, TX.....	964	5.58	3,880	5.49	1,233	6.00	395	6.56
Hidalgo, TX.....	1,073	5.21	967	5.53	822	5.40	120	6.36
McAllen, TX.....	2,078	5.46	7,902	5.75	1,845	5.31	888	6.41
<b>Total (Mexico).....</b>	<b>4,115</b>	<b>5.42</b>	<b>12,749</b>	<b>5.65</b>	<b>3,901</b>	<b>5.55</b>	<b>1,403</b>	<b>6.45</b>
<b>Total Pipeline.....</b>	<b>339,699</b>	<b>6.52</b>	<b>3,602,744</b>	<b>6.83</b>	<b>331,964</b>	<b>7.57</b>	<b>291,883</b>	<b>7.21</b>
<b>LNG</b>								
Gulf of Mexico.....	0	--	453	7.31	0	--	0	--
Lake Charles, LA.....	8,338	5.74	143,608	6.64	11,638	7.43	16,782	7.00
Cove Point, MD.....	14,370	5.70	116,613	7.51	9,035	8.10	2,963	8.48
Everett, MA.....	19,982	7.47	176,097	7.58	16,571	7.80	14,031	8.00
Elba Island, GA.....	10,751	5.78	146,766	7.03	13,996	7.95	13,460	7.11
<b>Total LNG.....</b>	<b>53,441</b>	<b>6.38</b>	<b>583,537</b>	<b>7.19</b>	<b>51,240</b>	<b>7.81</b>	<b>47,236</b>	<b>7.42</b>
<b>Total Imports.....</b>	<b>393,140</b>	<b>6.50</b>	<b>4,186,281</b>	<b>6.88</b>	<b>383,205</b>	<b>7.60</b>	<b>339,118</b>	<b>7.24</b>

See footnotes at end of table.



**Table SR6. U.S. Natural Gas Imports by Point of Entry, 2006-2007**  
(Volumes in Million Cubic Feet; Average Prices in Dollars per Thousand Cubic Feet) – Continued

Point of Entry	2006							
	October		September		August		July	
	Volume	Average Price	Volume	Average Price	Volume	Average Price	Volume	Average Price
<b>Pipeline</b>								
Canada								
Pacific Northwest								
Sumas, WA.....	19,996	4.50	22,023	5.29	19,880	5.90	17,657	5.34
West								
Eastport, ID.....	65,653	4.61	58,253	5.37	65,439	6.01	68,301	5.28
Midwest								
Babb, MT.....	235	5.48	102	4.60	217	5.97	1,712	5.46
Detroit, MI.....	0	--	0	--	0	--	0	--
Marysville, MI.....	0	--	0	--	0	--	0	--
Noyes, MN.....	39,808	4.81	30,953	5.61	31,170	6.62	29,484	5.69
Port of del Bonita, MT..	0	--	0	--	0	--	0	--
Port of Morgan, MT.....	50,514	4.54	62,034	5.89	62,418	6.64	60,715	6.56
Portal, ND.....	279	6.06	455	4.38	227	6.18	501	5.60
Sherwood, ND <sup>a</sup> .....	42,761	4.83	38,715	5.63	40,816	6.71	42,464	5.62
St. Clair, MI.....	539	5.37	88	5.85	786	7.27	1,680	5.92
Sweetgrass, MT.....	160	5.42	160	4.29	172	5.87	184	5.24
Warroad, MN.....	355	3.93	251	6.80	258	6.91	270	5.72
Whitlash, MT.....	266	4.94	694	4.76	735	5.58	737	5.14
<b>Total.....</b>	<b>134,918</b>	<b>4.72</b>	<b>133,452</b>	<b>5.74</b>	<b>136,799</b>	<b>6.65</b>	<b>137,749</b>	<b>6.05</b>
Northeast								
Calais, ME.....	8,296	5.29	8,384	6.37	11,425	7.47	11,266	6.33
Champlain, NY.....	1,386	4.91	1,479	4.97	1,496	4.87	1,511	4.87
Grand Island, NY.....	6,109	5.59	4,212	6.21	5,708	7.52	5,751	6.30
Highgate Springs, VT..	625	5.41	352	7.74	336	8.05	320	7.82
Massena, NY.....	538	5.80	389	6.81	359	7.38	303	6.45
Niagara Falls, NY.....	28,301	5.19	25,907	6.24	31,641	7.30	32,037	6.24
Pittsburg, NH.....	2,283	5.50	2,894	6.33	4,316	7.64	4,830	6.60
Waddington, NY.....	28,290	5.24	32,882	5.87	35,452	7.58	33,649	6.42
<b>Total.....</b>	<b>75,828</b>	<b>5.26</b>	<b>76,499</b>	<b>6.08</b>	<b>90,733</b>	<b>7.42</b>	<b>89,667</b>	<b>6.33</b>
<b>Total (Canada).....</b>	<b>296,395</b>	<b>4.82</b>	<b>290,227</b>	<b>5.72</b>	<b>312,849</b>	<b>6.69</b>	<b>313,374</b>	<b>5.92</b>
Mexico								
Texas								
Alamo, TX.....	578	4.69	1,280	4.72	0	--	0	--
Hidalgo, TX.....	0	--	0	--	0	--	0	--
McAllen, TX.....	858	4.69	2,003	4.81	0	--	0	--
<b>Total (Mexico).....</b>	<b>1,436</b>	<b>4.69</b>	<b>3,283</b>	<b>4.77</b>	<b>0</b>	<b>--</b>	<b>0</b>	<b>--</b>
<b>Total Pipeline.....</b>	<b>297,831</b>	<b>4.82</b>	<b>293,510</b>	<b>5.71</b>	<b>312,849</b>	<b>6.69</b>	<b>313,374</b>	<b>5.92</b>
<b>LNG</b>								
Gulf of Mexico.....	0	--	0	--	453	7.31	0	--
Lake Charles, LA.....	8,957	4.10	11,520	6.75	8,820	6.79	17,695	5.96
Cove Point, MD.....	2,994	4.14	5,449	6.97	11,778	7.23	11,980	6.15
Everett, MA.....	13,858	7.20	9,143	6.33	14,238	7.01	14,261	6.55
Elba Island, GA.....	10,376	4.47	13,890	6.85	16,834	7.01	13,616	5.84
<b>Total LNG.....</b>	<b>36,185</b>	<b>5.40</b>	<b>40,004</b>	<b>6.72</b>	<b>52,122</b>	<b>7.03</b>	<b>57,550</b>	<b>6.12</b>
<b>Total Imports.....</b>	<b>334,016</b>	<b>4.88</b>	<b>333,514</b>	<b>5.83</b>	<b>364,972</b>	<b>6.74</b>	<b>370,925</b>	<b>5.95</b>

See footnotes at end of table.

**Table SR6. U.S. Natural Gas Imports by Point of Entry, 2006-2007**  
(Volumes in Million Cubic Feet; Average Prices in Dollars per Thousand Cubic Feet) – Continued

Point of Entry	2006							
	June		May		April		March	
	Volume	Average Price	Volume	Average Price	Volume	Average Price	Volume	Average Price
<b>Pipeline</b>								
Canada								
Pacific Northwest								
Sumas, WA.....	25,891	5.27	20,839	5.74	20,467	5.88	21,341	6.42
West								
Eastport, ID.....	54,827	5.29	48,449	5.84	42,322	6.02	57,872	6.31
Midwest								
Babb, MT.....	2,206	5.27	1,828	5.31	553	5.76	161	5.78
Detroit, MI.....	0	--	0	--	0	--	0	--
Marysville, MI.....	0	--	24	7.07	0	--	0	--
Noyes, MN.....	29,833	5.79	28,097	6.28	30,755	6.57	34,942	6.84
Port of del Bonita, MT..	0	--	0	--	0	--	0	--
Port of Morgan, MT.....	52,309	5.53	54,848	6.23	50,995	6.31	59,316	6.85
Portal, ND.....	420	5.75	471	5.47	120	6.18	5	7.78
Sherwood, ND <sup>a</sup> .....	41,004	5.79	43,687	6.20	43,051	6.43	45,949	6.79
St. Clair, MI.....	178	6.49	169	6.88	1,145	7.31	461	6.98
Sweetgrass, MT.....	192	5.35	213	5.16	223	5.92	130	5.82
Warroad, MN.....	222	5.74	280	7.02	287	7.83	234	10.34
Whitlash, MT.....	926	5.03	975	5.31	974	5.50	1,012	5.80
<b>Total.....</b>	<b>127,289</b>	<b>5.67</b>	<b>130,592</b>	<b>6.21</b>	<b>128,104</b>	<b>6.42</b>	<b>142,210</b>	<b>6.83</b>
Northeast								
Calais, ME.....	8,988	6.38	9,022	8.46	8,459	8.01	7,566	7.41
Champlain, NY.....	1,431	4.89	1,399	4.88	1,417	4.91	1,549	4.97
Grand Island, NY.....	3,723	6.12	4,215	7.25	6,239	7.46	11,078	7.36
Highgate Springs, VT..	363	7.06	435	7.46	632	7.17	1,045	7.93
Massena, NY.....	328	6.58	398	7.43	531	7.64	776	9.84
Niagara Falls, NY.....	30,484	6.55	29,958	7.12	32,228	7.43	32,533	7.45
Pittsburg, NH.....	2,768	6.69	1,989	7.25	2,632	7.38	1,446	7.33
Waddington, NY.....	30,297	6.59	35,837	6.96	30,355	7.56	36,958	7.96
<b>Total.....</b>	<b>78,382</b>	<b>6.50</b>	<b>83,254</b>	<b>7.17</b>	<b>82,493</b>	<b>7.49</b>	<b>92,951</b>	<b>7.62</b>
<b>Total (Canada).....</b>	<b>286,389</b>	<b>5.79</b>	<b>283,133</b>	<b>6.39</b>	<b>273,386</b>	<b>6.64</b>	<b>314,374</b>	<b>6.94</b>
Mexico								
Texas								
Alamo, TX.....	0	--	0	--	50	6.20	238	6.06
Hidalgo, TX.....	0	--	0	--	0	--	25	5.97
McAllen, TX.....	0	--	130	5.28	20	6.07	428	6.15
<b>Total (Mexico).....</b>	<b>0</b>	<b>--</b>	<b>130</b>	<b>5.28</b>	<b>70</b>	<b>6.16</b>	<b>691</b>	<b>6.11</b>
<b>Total Pipeline.....</b>	<b>286,389</b>	<b>5.79</b>	<b>283,263</b>	<b>6.39</b>	<b>273,456</b>	<b>6.64</b>	<b>315,065</b>	<b>6.94</b>
<b>LNG</b>								
Gulf of Mexico.....	0	--	0	--	0	--	0	--
Lake Charles, LA.....	19,747	5.74	25,345	6.83	17,023	7.10	0	--
Cove Point, MD.....	14,568	6.43	11,626	7.00	14,421	7.18	8,862	7.25
Everett, MA.....	13,618	6.12	16,606	7.67	13,923	7.19	16,420	7.91
Elba Island, GA.....	13,773	5.87	13,694	6.93	13,425	7.16	7,945	7.13
<b>Total LNG.....</b>	<b>61,705</b>	<b>6.02</b>	<b>67,271</b>	<b>7.09</b>	<b>58,792</b>	<b>7.16</b>	<b>33,228</b>	<b>7.55</b>
<b>Total Imports.....</b>	<b>348,095</b>	<b>5.83</b>	<b>350,535</b>	<b>6.53</b>	<b>332,248</b>	<b>6.73</b>	<b>348,293</b>	<b>7.00</b>

See footnotes at end of table.

**Table SR6. U.S. Natural Gas Imports by Point of Entry, 2006-2007**

(Volumes in Million Cubic Feet; Average Prices in Dollars per Thousand Cubic Feet) – Continued

Point of Entry	2006			
	February		January	
	Volume	Average Price	Volume	Average Price
<b>Pipeline</b>				
Canada				
Pacific Northwest				
Sumas, WA .....	18,052	7.21	20,357	9.32
West				
Eastport, ID .....	48,874	7.16	56,506	9.67
Midwest				
Babb, MT .....	110	6.32	104	6.13
Detroit, MI .....	0	--	0	--
Marysville, MI .....	0	--	0	--
Noyes, MN .....	34,166	7.82	38,308	9.86
Port of del Bonita, MT.....	0	--	0	--
Port of Morgan, MT .....	51,224	7.60	58,506	10.11
Portal, ND .....	7	6.74	35	5.06
Sherwood, ND <sup>a</sup> .....	42,367	7.67	47,677	9.80
St. Clair, MI .....	169	7.84	2,009	9.43
Sweetgrass, MT .....	127	6.52	153	7.53
Warroad, MN .....	256	10.94	221	18.30
Whitlash, MT .....	946	5.81	983	6.30
<b>Total .....</b>	<b>129,372</b>	<b>7.67</b>	<b>147,996</b>	<b>9.92</b>
Northeast				
Calais, ME.....	8,487	8.85	9,744	12.09
Champlain, NY .....	1,441	5.12	1,561	5.21
Grand Island, NY .....	10,426	8.33	8,986	10.28
Highgate Springs, VT.....	1,129	8.65	1,084	10.50
Massena, NY .....	816	10.73	827	13.13
Niagara Falls, NY .....	28,892	8.58	31,310	10.67
Pittsburg, NH.....	1,158	8.23	1,140	9.92
Waddington, NY .....	33,176	9.19	39,988	10.61
<b>Total .....</b>	<b>85,524</b>	<b>8.77</b>	<b>94,642</b>	<b>10.68</b>
<b>Total (Canada) .....</b>	<b>281,822</b>	<b>7.89</b>	<b>319,501</b>	<b>10.06</b>
Mexico				
Texas				
Alamo, TX .....	0	--	105	7.46
Hidalgo, TX .....	0	--	0	--
McAllen, TX.....	486	7.33	1,244	7.46
<b>Total (Mexico) .....</b>	<b>486</b>	<b>7.33</b>	<b>1,349</b>	<b>7.46</b>
<b>Total Pipeline.....</b>	<b>282,308</b>	<b>7.89</b>	<b>320,850</b>	<b>10.05</b>
<b>LNG</b>				
Gulf of Mexico .....	0	--	0	--
Lake Charles, LA .....	3,053	8.66	3,028	11.94
Cove Point, MD.....	10,998	8.38	11,941	11.15
Everett, MA .....	16,807	8.62	16,620	9.39
Elba Island, GA .....	7,880	8.21	7,877	11.68
<b>Total LNG.....</b>	<b>38,737</b>	<b>8.47</b>	<b>39,466</b>	<b>10.57</b>
<b>Total Imports .....</b>	<b>321,045</b>	<b>7.96</b>	<b>360,316</b>	<b>10.11</b>

<sup>a</sup> EIA is reducing the reported volume of gas imported by pipeline from Canada by the amount of natural gas liquids removed from the saturated natural gas carried by Alliance Pipeline. Alliance moves saturated natural gas from the border to a processing plant in Illinois. After the adjustment, volumes of imported natural gas on this pipeline are on the same physical basis as other reported volumes of pipeline imports.

-- Not applicable.

**Notes:** Totals may not equal sum of components due to independent rounding. Geographic coverage is the continental United States including Alaska. Prices for LNG imports are reported as "landed," defined as received at the terminal.

**Sources:** Energy Information Administration based on data from the Office of Fossil Energy, U.S. Department of Energy, *Natural Gas Imports and Exports*, and EIA estimates of dry natural gas imports.

**Table SR7. Summary of U.S. Natural Gas Imports, 1978-2007**

(Volumes in Million Cubic Feet; Average Prices in Dollars per Thousand Cubic Feet)

Year and Month	Pipeline				Total Pipeline		LNG	
	Canada		Mexico		Volume	Average Price	Algeria	
	Volume	Average Price	Volume	Average Price			Volume	Average Price
1978 Total.....	881,123	2.19	0	--	881,123	2.19	84,422	1.53
1979 Total.....	1,000,775	2.61	0	--	1,000,775	2.61	252,608	2.03
1980 Total.....	796,507	4.32	102,410	4.41	898,917	4.33	85,850	3.77
1981 Total.....	762,107	4.83	105,013	5.01	867,120	4.85	36,824	5.54
1982 Total.....	783,407	4.97	94,794	5.02	878,200	4.98	55,136	5.82
1983 Total.....	711,923	4.49	75,361	4.70	787,284	4.51	131,124	6.41
1984 Total.....	755,368	4.01	51,502	4.49	806,870	4.04	36,191	4.90
1985 Total.....	926,056	3.17	0	--	926,056	3.17	23,659	4.60
1986 Total.....	748,780	2.42	0	--	748,780	2.42	0	--
1987 Total.....	992,532	1.95	0	--	992,532	1.95	0	--
1988 Total.....	1,276,322	1.83	0	--	1,276,322	1.83	17,490	2.71
1989 Total.....	1,339,357	1.81	0	--	1,339,357	1.81	42,163	2.22
1990 Total.....	1,448,065	1.91	0	--	1,448,065	1.91	84,193	2.47
1991 Total.....	1,709,716	1.81	0	--	1,709,716	1.81	63,596	2.36
1992 Total.....	2,094,387	1.84	0	--	2,094,387	1.84	43,116	2.54
1993 Total.....	2,266,751	2.02	1,678	1.94	2,268,429	2.02	81,685	2.20
1994 Total.....	2,566,049	1.86	7,013	1.99	2,573,061	1.86	50,778	2.28
1995 Total.....	2,816,408	1.48	6,722	1.53	2,823,130	1.48	17,918	2.30
1996 Total.....	2,883,277	1.96	13,862	2.25	2,897,138	1.96	35,325	2.70
1997 Total.....	2,899,152	2.15	17,243	2.31	2,916,394	2.15	65,675	2.67
1998 Total.....	3,052,073	1.95	14,532	2.03	3,066,605	1.95	68,567	2.51
1999 Total.....	3,367,545	2.23	54,530	2.14	3,422,075	2.23	75,763	2.41
2000 Total.....	3,543,966	3.97	11,601	5.43	3,555,567	3.98	46,947	3.48
2001 Total.....	3,728,537	4.43	10,276	5.00	3,738,814	4.44	64,945	3.73
2002 Total.....	3,784,978	3.13	1,755	2.36	3,786,733	3.13	26,584	3.61
2003 Total.....	3,437,230	5.23	0	--	3,437,230	5.23	53,423	5.32
2004 Total.....	3,606,543	5.80	0	--	3,606,543	5.80	120,343	5.82
2005 Total.....	3,700,454	8.09	9,320	8.46	3,709,774	8.09	97,157	8.86
<b>2006</b>								
January.....	319,501	10.06	1,349	7.46	320,850	10.05	2,988	13.69
February.....	281,822	7.89	486	7.33	282,308	7.89	2,802	9.13
March.....	314,374	6.94	691	6.11	315,065	6.94	3,019	7.63
April.....	273,386	6.64	70	6.16	273,456	6.64	2,804	7.15
May.....	283,133	6.39	130	5.28	283,263	6.39	0	--
June.....	286,389	5.79	0	--	286,389	5.79	2,808	6.57
July.....	313,374	5.92	0	--	313,374	5.92	3,028	6.61
August.....	312,849	6.69	0	--	312,849	6.69	0	--
September.....	290,227	5.72	3,283	4.77	293,510	5.71	0	--
October.....	296,395	4.82	1,436	4.69	297,831	4.82	0	--
November.....	290,480	7.21	1,403	6.45	291,883	7.21	0	--
December.....	328,063	7.59	3,901	5.55	331,964	7.57	0	--
<b>Total.....</b>	<b>3,589,995</b>	<b>6.83</b>	<b>12,749</b>	<b>5.65</b>	<b>3,602,744</b>	<b>6.83</b>	<b>17,449</b>	<b>8.48</b>
<b>2007</b>								
January.....	335,584	6.53	4,115	5.42	339,699	6.52	2,521	6.37
February.....	321,258	7.37	7,515	7.18	328,773	7.37	0	--
March.....	308,619	7.44	6,312	6.71	314,931	7.43	8,686	7.81
April.....	278,700	7.25	9,395	6.90	288,095	7.24	24,496	7.18
May.....	283,124	7.42	2,770	7.42	285,893	7.42	23,648	7.25
June.....	291,209	7.30	3,674	7.19	294,883	7.30	12,309	7.12
July.....	314,851	6.45	5,381	6.04	320,231	6.45	0	--
August.....	334,705	5.92	4,357	5.99	339,062	5.92	2,817	6.66
September.....	317,767	5.46	1,963	5.44	319,730	5.46	2,822	5.92
October.....	313,685	6.31	1,601	6.35	315,286	6.31	0	--
November.....	311,065	7.16	3,003	5.96	314,068	7.15	0	--
December.....	372,142	7.50	3,976	6.62	376,118	7.49	0	--
<b>Total.....</b>	<b>3,782,708</b>	<b>6.83</b>	<b>54,062</b>	<b>6.55</b>	<b>3,836,770</b>	<b>6.83</b>	<b>77,299</b>	<b>7.17</b>

See footnotes at end of table.

**Table SR7. Summary of U.S. Natural Gas Imports, 1978-2007**

(Volumes in Million Cubic Feet; Average Prices in Dollars per Thousand Cubic Feet) – Continued

Year and Month	LNG							
	Australia		Brunei		Canada		Egypt	
	Volume	Average Price	Volume	Average Price	Volume	Average Price	Volume	Average Price
1978 Total.....	0	--	0	--	0	--	0	--
1979 Total.....	0	--	0	--	0	--	0	--
1980 Total.....	0	--	0	--	0	--	0	--
1981 Total.....	0	--	0	--	6	6.63	0	--
1982 Total.....	0	--	0	--	0	--	0	--
1983 Total.....	0	--	0	--	0	--	0	--
1984 Total.....	0	--	0	--	0	--	0	--
1985 Total.....	0	--	0	--	0	--	0	--
1986 Total.....	0	--	0	--	0	--	0	--
1987 Total.....	0	--	0	--	0	--	0	--
1988 Total.....	0	--	0	--	0	--	0	--
1989 Total.....	0	--	0	--	0	--	0	--
1990 Total.....	0	--	0	--	0	--	0	--
1991 Total.....	0	--	0	--	0	--	0	--
1992 Total.....	0	--	0	--	0	--	0	--
1993 Total.....	0	--	0	--	0	--	0	--
1994 Total.....	0	--	0	--	0	--	0	--
1995 Total.....	0	--	0	--	0	--	0	--
1996 Total.....	0	--	0	--	0	--	0	--
1997 Total.....	9,686	2.92	0	--	0	--	0	--
1998 Total.....	11,634	3.30	0	--	0	--	0	--
1999 Total.....	11,904	2.70	0	--	0	--	0	--
2000 Total.....	5,945	3.25	0	--	0	--	0	--
2001 Total.....	2,394	3.86	0	--	0	--	0	--
2002 Total.....	0	--	2,401	3.25	0	--	0	--
2003 Total.....	0	--	0	--	0	--	0	--
2004 Total.....	14,990	6.47	0	--	0	--	0	--
2005 Total.....	0	--	0	--	0	--	72,540	10.88
<b>2006</b>								
January.....	0	--	0	--	0	--	2,970	8.31
February.....	0	--	0	--	0	--	5,261	8.11
March.....	0	--	0	--	0	--	0	--
April.....	0	--	0	--	0	--	13,560	7.02
May.....	0	--	0	--	0	--	19,826	6.93
June.....	0	--	0	--	0	--	14,334	5.68
July.....	0	--	0	--	0	--	15,004	5.67
August.....	0	--	0	--	0	--	8,880	7.00
September.....	0	--	0	--	0	--	8,782	6.76
October.....	0	--	0	--	0	--	2,551	4.05
November.....	0	--	0	--	0	--	16,921	7.12
December.....	0	--	0	--	0	--	11,440	8.26
<b>Total.....</b>	<b>0</b>	<b>--</b>	<b>0</b>	<b>--</b>	<b>0</b>	<b>--</b>	<b>119,528</b>	<b>6.80</b>
<b>2007</b>								
January.....	0	--	0	--	0	--	8,803	5.77
February.....	0	--	0	--	0	--	5,778	6.73
March.....	0	--	0	--	0	--	14,783	7.42
April.....	0	--	0	--	0	--	14,218	7.56
May.....	0	--	0	--	0	--	14,914	7.44
June.....	0	--	0	--	0	--	14,804	7.50
July.....	0	--	0	--	0	--	11,948	6.76
August.....	0	--	0	--	0	--	11,585	5.98
September.....	0	--	0	--	0	--	11,985	5.20
October.....	0	--	0	--	0	--	2,789	6.68
November.....	0	--	0	--	0	--	2,973	7.56
December.....	0	--	0	--	0	--	0	--
<b>Total.....</b>	<b>0</b>	<b>--</b>	<b>0</b>	<b>--</b>	<b>0</b>	<b>--</b>	<b>114,580</b>	<b>6.83</b>

See footnotes at end of table.

**Table SR7. Summary of U.S. Natural Gas Imports, 1978-2007**

(Volumes in Million Cubic Feet; Average Prices in Dollars per Thousand Cubic Feet) – Continued

Year and Month	LNG							
	Equatorial Guinea		Indonesia		Malaysia		Nigeria	
	Volume	Average Price	Volume	Average Price	Volume	Average Price	Volume	Average Price
1978 Total.....	0	--	0	--	0	--	0	--
1979 Total.....	0	--	0	--	0	--	0	--
1980 Total.....	0	--	0	--	0	--	0	--
1981 Total.....	0	--	0	--	0	--	0	--
1982 Total.....	0	--	0	--	0	--	0	--
1983 Total.....	0	--	0	--	0	--	0	--
1984 Total.....	0	--	0	--	0	--	0	--
1985 Total.....	0	--	0	--	0	--	0	--
1986 Total.....	0	--	1,669	4.62	0	--	0	--
1987 Total.....	0	--	0	--	0	--	0	--
1988 Total.....	0	--	0	--	0	--	0	--
1989 Total.....	0	--	0	--	0	--	0	--
1990 Total.....	0	--	0	--	0	--	0	--
1991 Total.....	0	--	0	--	0	--	0	--
1992 Total.....	0	--	0	--	0	--	0	--
1993 Total.....	0	--	0	--	0	--	0	--
1994 Total.....	0	--	0	--	0	--	0	--
1995 Total.....	0	--	0	--	0	--	0	--
1996 Total.....	0	--	0	--	0	--	0	--
1997 Total.....	0	--	0	--	0	--	0	--
1998 Total.....	0	--	0	--	0	--	0	--
1999 Total.....	0	--	0	--	2,576	2.36	0	--
2000 Total.....	0	--	2,760	3.99	0	--	12,654	4.37
2001 Total.....	0	--	0	--	0	--	37,966	5.56
2002 Total.....	0	--	0	--	2,423	3.43	8,123	3.21
2003 Total.....	0	--	0	--	2,704	4.97	50,067	4.66
2004 Total.....	0	--	0	--	19,999	4.93	11,818	6.20
2005 Total.....	0	--	0	--	8,719	9.00	8,149	10.11
<b>2006</b>								
January.....	0	--	0	--	0	--	3,028	11.94
February.....	0	--	0	--	0	--	3,053	8.66
March.....	0	--	0	--	0	--	0	--
April.....	0	--	0	--	0	--	5,991	7.38
May.....	0	--	0	--	0	--	3,100	7.35
June.....	0	--	0	--	0	--	5,996	5.96
July.....	0	--	0	--	0	--	6,129	5.93
August.....	0	--	0	--	0	--	6,199	7.06
September.....	0	--	0	--	0	--	6,025	6.94
October.....	0	--	0	--	0	--	8,957	4.10
November.....	0	--	0	--	0	--	5,732	7.30
December.....	0	--	0	--	0	--	3,082	7.30
<b>Total.....</b>	<b>0</b>	<b>--</b>	<b>0</b>	<b>--</b>	<b>0</b>	<b>--</b>	<b>57,292</b>	<b>6.78</b>
<b>2007</b>								
January.....	0	--	0	--	0	--	5,325	5.87
February.....	0	--	0	--	0	--	5,743	7.05
March.....	0	--	0	--	0	--	9,085	7.73
April.....	0	--	0	--	0	--	9,042	7.03
May.....	0	--	0	--	0	--	14,970	7.83
June.....	2,910	7.46	0	--	0	--	20,312	7.67
July.....	8,989	6.04	0	--	0	--	12,442	6.87
August.....	5,896	6.18	0	--	0	--	15,005	5.93
September.....	0	--	0	--	0	--	3,105	5.43
October.....	0	--	0	--	0	--	0	--
November.....	0	--	0	--	0	--	0	--
December.....	0	--	0	--	0	--	0	--
<b>Total.....</b>	<b>17,795</b>	<b>6.32</b>	<b>0</b>	<b>--</b>	<b>0</b>	<b>--</b>	<b>95,028</b>	<b>7.05</b>

See footnotes at end of table.



**Table SR7. Summary of U.S. Natural Gas Imports, 1978-2007**

(Volumes in Million Cubic Feet; Average Prices in Dollars per Thousand Cubic Feet) – Continued

Year and Month	LNG							
	Oman		Qatar		Trinidad and Tobago		United Arab Emirates	
	Volume	Average Price	Volume	Average Price	Volume	Average Price	Volume	Average Price
1978 Total.....	0	--	0	--	0	--	0	--
1979 Total.....	0	--	0	--	0	--	0	--
1980 Total.....	0	--	0	--	0	--	0	--
1981 Total.....	0	--	0	--	0	--	0	--
1982 Total.....	0	--	0	--	0	--	0	--
1983 Total.....	0	--	0	--	0	--	0	--
1984 Total.....	0	--	0	--	0	--	0	--
1985 Total.....	0	--	0	--	0	--	0	--
1986 Total.....	0	--	0	--	0	--	0	--
1987 Total.....	0	--	0	--	0	--	0	--
1988 Total.....	0	--	0	--	0	--	0	--
1989 Total.....	0	--	0	--	0	--	0	--
1990 Total.....	0	--	0	--	0	--	0	--
1991 Total.....	0	--	0	--	0	--	0	--
1992 Total.....	0	--	0	--	0	--	0	--
1993 Total.....	0	--	0	--	0	--	0	--
1994 Total.....	0	--	0	--	0	--	0	--
1995 Total.....	0	--	0	--	0	--	0	--
1996 Total.....	0	--	0	--	0	--	4,949	3.46
1997 Total.....	0	--	0	--	0	--	2,417	3.74
1998 Total.....	0	--	0	--	0	--	5,252	2.63
1999 Total.....	0	--	19,697	2.71	50,777	2.39	2,713	3.03
2000 Total.....	9,998	3.36	46,057	3.44	98,949	3.43	2,725	3.53
2001 Total.....	12,055	5.56	22,758	4.37	98,009	4.14	0	--
2002 Total.....	3,013	3.34	35,081	3.39	151,104	3.40	0	--
2003 Total.....	8,632	3.76	13,623	4.99	378,069	4.74	0	--
2004 Total.....	9,412	5.59	11,854	5.68	462,100	5.84	0	--
2005 Total.....	2,464	5.72	2,986	5.97	439,246	7.68	0	--
<b>2006</b>								
January.....	0	--	0	--	30,480	10.35	0	--
February.....	0	--	0	--	27,620	8.45	0	--
March.....	0	--	0	--	30,209	7.54	0	--
April.....	0	--	0	--	36,437	7.17	0	--
May.....	0	--	0	--	44,346	7.15	0	--
June.....	0	--	0	--	38,568	6.11	0	--
July.....	0	--	0	--	33,390	6.31	0	--
August.....	0	--	0	--	37,043	7.03	0	--
September.....	0	--	0	--	25,197	6.65	0	--
October.....	0	--	0	--	24,677	6.01	0	--
November.....	0	--	0	--	24,583	7.65	0	--
December.....	0	--	0	--	36,718	7.71	0	--
<b>Total.....</b>	<b>0</b>	<b>--</b>	<b>0</b>	<b>--</b>	<b>389,268</b>	<b>7.32</b>	<b>0</b>	<b>--</b>
<b>2007</b>								
January.....	0	--	0	--	36,792	6.61	0	--
February.....	0	--	0	--	32,581	7.77	0	--
March.....	0	--	0	--	54,295	7.49	0	--
April.....	0	--	0	--	50,986	7.18	0	--
May.....	0	--	3,040	6.12	37,747	7.71	0	--
June.....	0	--	5,926	8.12	30,327	7.16	0	--
July.....	0	--	3,098	6.55	61,866	7.10	0	--
August.....	0	--	6,287	7.34	45,881	6.33	0	--
September.....	0	--	0	--	23,741	5.99	0	--
October.....	0	--	0	--	29,149	6.86	0	--
November.....	0	--	0	--	23,566	7.92	0	--
December.....	0	--	0	--	20,826	7.86	0	--
<b>Total.....</b>	<b>0</b>	<b>--</b>	<b>18,352</b>	<b>7.26</b>	<b>447,758</b>	<b>7.14</b>	<b>0</b>	<b>--</b>

See footnotes at end of table.

**Table SR7. Summary of U.S. Natural Gas Imports, 1978-2007**

(Volumes in Million Cubic Feet; Average Prices in Dollars per Thousand Cubic Feet) – Continued

Year and Month	LNG		Total LNG		Grand Total	
	Other <sup>a</sup>		Volume	Average Price	Volume	Average Price
	Volume	Average Price				
1978 Total.....	0	--	84,422	1.53	965,545	2.13
1979 Total.....	0	--	252,608	2.03	1,253,383	2.49
1980 Total.....	0	--	85,850	3.77	984,767	4.28
1981 Total.....	0	--	36,830	5.54	903,949	4.88
1982 Total.....	0	--	55,136	5.82	933,336	5.03
1983 Total.....	0	--	131,124	6.41	918,407	4.78
1984 Total.....	0	--	36,191	4.90	843,060	4.08
1985 Total.....	0	--	23,659	4.60	949,715	3.21
1986 Total.....	0	--	1,669	4.62	750,449	2.43
1987 Total.....	0	--	0	--	992,532	1.95
1988 Total.....	0	--	17,490	2.71	1,293,812	1.84
1989 Total.....	0	--	42,163	2.22	1,381,520	1.82
1990 Total.....	0	--	84,193	2.47	1,532,259	1.94
1991 Total.....	0	--	63,596	2.36	1,773,313	1.83
1992 Total.....	0	--	43,116	2.54	2,137,504	1.85
1993 Total.....	0	--	81,685	2.20	2,350,115	2.03
1994 Total.....	0	--	50,778	2.28	2,623,839	1.87
1995 Total.....	0	--	17,918	2.30	2,841,048	1.49
1996 Total.....	0	--	40,274	2.80	2,937,413	1.97
1997 Total.....	0	--	77,778	2.74	2,994,173	2.17
1998 Total.....	0	--	85,453	2.63	3,152,058	1.97
1999 Total.....	0	--	163,430	2.47	3,585,505	2.24
2000 Total.....	0	--	226,036	3.50	3,781,603	3.95
2001 Total.....	0	--	238,126	4.35	3,976,939	4.43
2002 Total.....	0	--	228,730	3.41	4,015,463	3.15
2003 Total.....	0	--	506,519	4.79	3,943,749	5.17
2004 Total.....	1,500	5.52	652,015	5.82	4,258,558	5.81
2005 Total.....	0	--	631,260	8.26	4,341,034	8.12
<b>2006</b>						
January.....	0	--	39,466	10.57	360,316	10.11
February.....	0	--	38,737	8.47	321,045	7.96
March.....	0	--	33,228	7.55	348,293	7.00
April.....	0	--	58,792	7.16	332,248	6.73
May.....	0	--	67,271	7.09	350,535	6.53
June.....	0	--	61,705	6.02	348,095	5.83
July.....	0	--	57,550	6.12	370,925	5.95
August.....	0	--	52,122	7.03	364,972	6.74
September.....	0	--	40,004	6.72	333,514	5.83
October.....	0	--	36,185	5.40	334,016	4.88
November.....	0	--	47,236	7.42	339,118	7.24
December.....	0	--	51,240	7.81	383,205	7.60
<b>Total.....</b>	<b>0</b>	<b>--</b>	<b>583,537</b>	<b>7.19</b>	<b>4,186,281</b>	<b>6.88</b>
<b>2007</b>						
January.....	0	--	53,441	6.38	393,140	6.50
February.....	0	--	44,101	7.54	372,874	7.39
March.....	0	--	86,848	7.53	401,779	7.45
April.....	0	--	98,742	7.22	386,837	7.24
May.....	0	--	94,319	7.52	380,213	7.45
June.....	0	--	86,587	7.41	381,470	7.32
July.....	0	--	98,344	6.92	418,576	6.56
August.....	0	--	87,471	6.29	426,534	6.00
September.....	0	--	41,654	5.71	361,383	5.49
October.....	0	--	31,939	6.84	347,224	6.35
November.....	0	--	26,539	7.88	340,607	7.21
December.....	0	--	20,826	7.86	396,945	7.51
<b>Total.....</b>	<b>0</b>	<b>--</b>	<b>770,812</b>	<b>7.07</b>	<b>4,607,582</b>	<b>6.87</b>

<sup>a</sup> The point of origin for volumes of imported LNG was unassigned in the reports to the Office of Fossil Energy.  
 -- Not applicable.

received at the terminal or "tailgate," defined as regasification at the terminal. For 2003 through 2007, all prices for LNG imports are reported as "landed."

**Sources:** 1978-1994: Energy Information Administration, Form FPC-14, "Annual Report for Importers and Exporters of Natural Gas." 1995 to present: Energy Information Administration based on data from the Office of Fossil Energy, U.S. Department of Energy, *Natural Gas Imports and Exports*.

**Notes:** Totals may not equal sum of components due to independent rounding. Geographic coverage is the continental United States including Alaska. Prior to 2003, prices for LNG imports may be reported as either "landed," defined as

**Table SR8. U.S. Natural Gas Exports by Point of Exit, 2006-2007**  
(Volumes in Million Cubic Feet; Average Prices in Dollars per Thousand Cubic Feet)

Point of Exit	2007							
	Total		December		November		October	
	Volume	Average Price	Volume	Average Price	Volume	Average Price	Volume	Average Price
<b>Pipeline</b>								
Canada								
Detroit, MI .....	22,904	6.88	3,652	7.17	3,687	7.27	1,220	6.35
Havre, MT .....	20,420	6.16	1,620	6.64	1,618	6.53	1,699	5.90
Marysville, MI .....	9,158	7.77	1,387	7.75	896	7.84	5	6.55
Sault Ste. Marie, MI.....	4,389	7.13	701	7.55	1,118	7.58	235	6.48
St. Clair, MI .....	418,765	7.24	63,367	7.69	49,851	7.48	27,744	6.73
Sumas, WA .....	6,560	6.14	944	7.29	419	7.66	190	5.98
<b>Total (Canada).....</b>	<b>482,196</b>	<b>7.17</b>	<b>71,671</b>	<b>7.64</b>	<b>57,587</b>	<b>7.45</b>	<b>31,094</b>	<b>6.66</b>
Mexico								
Alamo, TX .....	1,540	7.11	0	--	72	6.94	170	7.90
Calexico, CA .....	5,147	6.87	497	7.44	487	6.79	497	6.33
Clint, TX .....	84,484	6.37	8,057	6.20	8,245	5.60	8,418	5.59
Del Rio, TX.....	282	7.74	20	7.63	20	7.65	23	7.26
Douglas, AZ .....	16,102	6.94	474	7.16	845	6.69	519	6.45
Eagle Pass, TX .....	1,955	6.72	138	7.02	159	7.12	170	6.31
El Paso, TX.....	8,682	6.76	1,100	6.88	759	6.25	595	6.73
McAllen, TX.....	4,142	6.65	1,144	6.89	253	6.53	1,340	6.88
Nogales, AZ .....	88	6.79	12	7.28	9	6.45	10	5.69
Ogilby, CA.....	91,539	6.51	7,337	7.03	7,225	6.27	6,602	5.93
Penitas, TX .....	0	--	0	--	0	--	0	--
Rio Bravo, TX.....	54,660	6.80	3,266	7.00	4,147	6.66	5,920	6.69
Roma, TX.....	23,152	6.93	3,339	7.02	3,439	6.93	4,640	6.83
<b>Total (Mexico).....</b>	<b>291,773</b>	<b>6.60</b>	<b>25,384</b>	<b>6.76</b>	<b>25,661</b>	<b>6.24</b>	<b>28,902</b>	<b>6.22</b>
<b>Total Pipeline.....</b>	<b>773,969</b>	<b>6.96</b>	<b>97,055</b>	<b>7.41</b>	<b>83,249</b>	<b>7.08</b>	<b>59,996</b>	<b>6.45</b>
<b>LNG</b>								
Canada								
Buffalo, NY.....	2	12.07	0	--	0	--	0	--
<b>Total (Canada).....</b>	<b>2</b>	<b>12.07</b>	<b>0</b>	<b>--</b>	<b>0</b>	<b>--</b>	<b>0</b>	<b>--</b>
Japan								
Kenai, AK.....	46,501	5.97	4,436	6.27	3,204	6.32	1,680	6.20
<b>Total (Japan).....</b>	<b>46,501</b>	<b>5.97</b>	<b>4,436</b>	<b>6.27</b>	<b>3,204</b>	<b>6.32</b>	<b>1,680</b>	<b>6.20</b>
Mexico								
Nogales, AZ .....	16	15.27	0	--	0	--	0	--
Otay Mesa, CA.....	71	12.85	5	13.47	5	12.83	6	11.98
<b>Total (Mexico).....</b>	<b>87</b>	<b>13.30</b>	<b>5</b>	<b>13.47</b>	<b>5</b>	<b>12.83</b>	<b>6</b>	<b>11.98</b>
Russia								
Kenai, AK.....	1,895	12.12	0	--	0	--	1,895	12.12
<b>Total (Russia) .....</b>	<b>1,895</b>	<b>12.12</b>	<b>0</b>	<b>--</b>	<b>0</b>	<b>--</b>	<b>1,895</b>	<b>12.12</b>
<b>Total LNG.....</b>	<b>48,485</b>	<b>6.23</b>	<b>4,441</b>	<b>6.28</b>	<b>3,209</b>	<b>6.33</b>	<b>3,580</b>	<b>9.34</b>
<b>Total Exports.....</b>	<b>822,454</b>	<b>6.92</b>	<b>101,495</b>	<b>7.36</b>	<b>86,458</b>	<b>7.05</b>	<b>63,576</b>	<b>6.61</b>

See footnotes at end of table.

**Table SR8. U.S. Natural Gas Exports by Point of Exit, 2006-2007**  
(Volumes in Million Cubic Feet; Average Prices in Dollars per Thousand Cubic Feet) – Continued

Point of Exit	2007							
	September		August		July		June	
	Volume	Average Price	Volume	Average Price	Volume	Average Price	Volume	Average Price
<b>Pipeline</b>								
Canada								
Detroit, MI .....	1,449	5.72	964	5.75	1,402	6.46	1,090	7.22
Havre, MT .....	1,699	5.15	1,661	5.05	1,671	5.35	1,638	6.51
Marysville, MI .....	13	6.43	0	--	92	6.80	145	7.52
Sault Ste. Marie, MI.....	150	6.06	155	6.33	157	6.51	155	7.64
St. Clair, MI .....	29,486	5.82	23,760	6.21	33,521	6.96	25,069	7.78
Sumas, WA .....	187	5.99	1,068	4.60	1,053	4.61	100	6.99
<b>Total (Canada).....</b>	<b>32,984</b>	<b>5.78</b>	<b>27,608</b>	<b>6.06</b>	<b>37,897</b>	<b>6.81</b>	<b>28,197</b>	<b>7.68</b>
Mexico								
Alamo, TX .....	265	6.16	182	5.84	0	--	258	7.68
Calexico, CA .....	422	5.62	443	6.07	444	6.97	427	7.64
Clint, TX .....	6,597	5.64	8,226	6.13	8,798	5.64	7,441	7.30
Del Rio, TX.....	22	7.13	24	7.34	24	7.92	23	8.40
Douglas, AZ .....	1,485	5.64	1,684	6.23	1,626	6.77	1,483	7.50
Eagle Pass, TX .....	147	5.41	158	5.83	127	6.96	156	7.66
El Paso, TX.....	533	6.12	523	6.26	442	6.14	498	7.39
McAllen, TX.....	737	6.53	489	5.94	179	5.91	0	--
Nogales, AZ .....	8	5.40	9	6.47	7	7.34	8	7.67
Ogilby, CA.....	9,204	5.63	10,961	6.09	10,125	6.37	8,330	6.42
Penitas, TX .....	0	--	0	--	0	--	0	--
Rio Bravo, TX.....	5,923	6.03	5,945	6.26	5,610	6.18	5,451	7.49
Roma, TX.....	3,142	6.39	1,302	6.03	1,132	6.00	1,687	7.80
<b>Total (Mexico).....</b>	<b>28,484</b>	<b>5.84</b>	<b>29,945</b>	<b>6.14</b>	<b>28,516</b>	<b>6.12</b>	<b>25,763</b>	<b>7.11</b>
<b>Total Pipeline.....</b>	<b>61,468</b>	<b>5.81</b>	<b>57,554</b>	<b>6.10</b>	<b>66,412</b>	<b>6.51</b>	<b>53,960</b>	<b>7.41</b>
<b>LNG</b>								
Canada								
Buffalo, NY.....	0	--	0	--	2	12.07	0	--
<b>Total (Canada).....</b>	<b>0</b>	<b>--</b>	<b>0</b>	<b>--</b>	<b>2</b>	<b>12.07</b>	<b>0</b>	<b>--</b>
Japan								
Kenai, AK.....	3,604	6.13	4,310	6.05	4,239	5.86	3,342	5.71
<b>Total (Japan).....</b>	<b>3,604</b>	<b>6.13</b>	<b>4,310</b>	<b>6.05</b>	<b>4,239</b>	<b>5.86</b>	<b>3,342</b>	<b>5.71</b>
Mexico								
Nogales, AZ .....	0	--	1	18.93	0	--	1	17.97
Otay Mesa, CA.....	5	11.40	5	11.89	7	12.97	6	13.61
<b>Total (Mexico).....</b>	<b>5</b>	<b>11.40</b>	<b>6</b>	<b>12.92</b>	<b>7</b>	<b>12.97</b>	<b>6</b>	<b>14.15</b>
Russia								
Kenai, AK.....	0	--	0	--	0	--	0	--
<b>Total (Russia) .....</b>	<b>0</b>	<b>--</b>	<b>0</b>	<b>--</b>	<b>0</b>	<b>--</b>	<b>0</b>	<b>--</b>
<b>Total LNG.....</b>	<b>3,609</b>	<b>6.14</b>	<b>4,316</b>	<b>6.06</b>	<b>4,247</b>	<b>5.87</b>	<b>3,349</b>	<b>5.73</b>
<b>Total Exports.....</b>	<b>65,077</b>	<b>5.83</b>	<b>61,870</b>	<b>6.10</b>	<b>70,660</b>	<b>6.47</b>	<b>57,309</b>	<b>7.31</b>

See footnotes at end of table.

**Table SR8. U.S. Natural Gas Exports by Point of Exit, 2006-2007**  
(Volumes in Million Cubic Feet; Average Prices in Dollars per Thousand Cubic Feet) – Continued

Point of Exit	2007							
	May		April		March		February	
	Volume	Average Price	Volume	Average Price	Volume	Average Price	Volume	Average Price
<b>Pipeline</b>								
Canada								
Detroit, MI .....	2,971	7.47	1,657	7.33	2,861	7.25	762	6.15
Havre, MT .....	1,662	6.83	1,655	6.69	1,903	6.71	1,723	6.25
Marysville, MI .....	709	6.78	333	8.01	1,451	7.58	3,012	8.31
Sault Ste. Marie, MI.....	155	8.06	150	7.97	294	7.66	531	6.98
St. Clair, MI .....	29,515	7.84	27,355	7.83	45,499	7.70	28,123	7.61
Sumas, WA .....	19	6.87	599	6.92	1,423	6.66	136	7.29
<b>Total (Canada).....</b>	<b>35,031</b>	<b>7.74</b>	<b>31,748</b>	<b>7.73</b>	<b>53,430</b>	<b>7.61</b>	<b>34,287</b>	<b>7.56</b>
Mexico								
Alamo, TX .....	356	7.62	0	--	0	--	0	--
Calexico, CA .....	416	7.48	367	6.86	396	7.51	329	7.35
Clint, TX .....	7,009	7.39	5,310	7.21	5,606	7.01	4,521	7.25
Del Rio, TX.....	24	8.26	26	7.88	26	7.92	24	7.88
Douglas, AZ .....	1,571	7.22	1,655	7.34	1,667	7.32	1,472	7.36
Eagle Pass, TX .....	171	7.49	156	7.04	173	7.15	181	6.97
El Paso, TX.....	528	7.48	560	7.28	808	6.48	1,076	7.40
McAllen, TX.....	0	--	0	--	0	--	0	--
Nogales, AZ .....	9	7.44	6	6.70	7	7.44	3	7.23
Ogilby, CA.....	6,935	6.92	4,278	6.50	5,712	6.60	7,129	7.39
Penitas, TX .....	0	--	0	--	0	--	0	--
Rio Bravo, TX.....	5,492	7.69	2,529	7.63	4,249	7.04	2,106	7.39
Roma, TX.....	1,357	7.79	593	7.65	209	6.93	395	7.48
<b>Total (Mexico).....</b>	<b>23,869</b>	<b>7.34</b>	<b>15,479</b>	<b>7.11</b>	<b>18,853</b>	<b>6.91</b>	<b>17,236</b>	<b>7.35</b>
<b>Total Pipeline.....</b>	<b>58,901</b>	<b>7.58</b>	<b>47,227</b>	<b>7.53</b>	<b>72,282</b>	<b>7.42</b>	<b>51,522</b>	<b>7.49</b>
<b>LNG</b>								
Canada								
Buffalo, NY.....	0	--	0	--	0	--	0	--
<b>Total (Canada).....</b>	<b>0</b>	<b>--</b>	<b>0</b>	<b>--</b>	<b>0</b>	<b>--</b>	<b>0</b>	<b>--</b>
Japan								
Kenai, AK.....	3,568	5.63	3,502	5.85	4,745	5.83	5,001	5.88
<b>Total (Japan).....</b>	<b>3,568</b>	<b>5.63</b>	<b>3,502</b>	<b>5.85</b>	<b>4,745</b>	<b>5.83</b>	<b>5,001</b>	<b>5.88</b>
Mexico								
Nogales, AZ .....	0	--	0	--	2	18.16	7	15.99
Otay Mesa, CA.....	9	13.38	7	12.74	7	13.48	9	13.48
<b>Total (Mexico).....</b>	<b>9</b>	<b>13.38</b>	<b>7</b>	<b>12.74</b>	<b>8</b>	<b>14.35</b>	<b>16</b>	<b>14.62</b>
Russia								
Kenai, AK.....	0	--	0	--	0	--	0	--
<b>Total (Russia) .....</b>	<b>0</b>	<b>--</b>	<b>0</b>	<b>--</b>	<b>0</b>	<b>--</b>	<b>0</b>	<b>--</b>
<b>Total LNG.....</b>	<b>3,577</b>	<b>5.65</b>	<b>3,509</b>	<b>5.86</b>	<b>4,753</b>	<b>5.85</b>	<b>5,017</b>	<b>5.91</b>
<b>Total Exports.....</b>	<b>62,477</b>	<b>7.47</b>	<b>50,736</b>	<b>7.41</b>	<b>77,036</b>	<b>7.33</b>	<b>56,539</b>	<b>7.35</b>

See footnotes at end of table.

**Table SR8. U.S. Natural Gas Exports by Point of Exit, 2006-2007**  
(Volumes in Million Cubic Feet; Average Prices in Dollars per Thousand Cubic Feet) – Continued

Point of Exit	2007		2006					
	January		Total		December		November	
	Volume	Average Price	Volume	Average Price	Volume	Average Price	Volume	Average Price
<b>Pipeline</b>								
Canada								
Detroit, MI .....	1,188	5.27	22,156	7.61	1,291	7.37	1,370	6.86
Havre, MT .....	1,873	6.24	21,245	6.05	2,203	6.77	1,728	5.81
Marysville, MI .....	1,115	7.21	3,483	7.36	1,014	7.83	204	7.45
Sault Ste. Marie, MI.....	589	5.99	5,070	8.11	1,017	7.69	1,040	7.72
St. Clair, MI .....	35,475	6.46	286,582	7.39	40,742	8.01	40,304	7.56
Sumas, WA .....	423	6.41	2,529	6.58	611	7.31	281	8.24
<b>Total (Canada).....</b>	<b>40,663</b>	<b>6.43</b>	<b>341,065</b>	<b>7.32</b>	<b>46,878</b>	<b>7.91</b>	<b>44,928</b>	<b>7.48</b>
Mexico								
Alamo, TX .....	238	7.24	24,057	6.62	0	--	0	--
Calexico, CA .....	422	6.55	5,291	6.60	429	7.30	442	7.14
Clint, TX .....	6,257	6.64	71,451	6.42	5,857	7.11	5,184	6.82
Del Rio, TX.....	26	7.56	0	--	0	--	0	--
Douglas, AZ .....	1,622	7.25	15,647	6.26	1,246	6.62	745	6.50
Eagle Pass, TX .....	219	5.89	2,118	6.73	179	6.99	193	6.86
El Paso, TX.....	1,259	6.53	8,143	6.47	1,300	6.80	836	6.40
McAllen, TX.....	0	--	18,631	6.76	187	7.46	811	7.24
Nogales, AZ .....	1	6.31	0	--	0	--	0	--
Ogilby, CA.....	7,700	7.42	95,710	6.31	7,751	6.95	7,701	6.65
Penitas, TX .....	0	--	0	--	0	--	0	--
Rio Bravo, TX.....	4,021	6.44	60,432	6.51	2,762	7.13	2,594	6.89
Roma, TX.....	1,918	7.29	20,476	6.75	902	7.42	1,420	7.06
<b>Total (Mexico).....</b>	<b>23,680</b>	<b>6.95</b>	<b>321,955</b>	<b>6.46</b>	<b>20,613</b>	<b>7.02</b>	<b>19,926</b>	<b>6.78</b>
<b>Total Pipeline.....</b>	<b>64,344</b>	<b>6.62</b>	<b>663,020</b>	<b>6.90</b>	<b>67,490</b>	<b>7.64</b>	<b>64,854</b>	<b>7.26</b>
<b>LNG</b>								
Canada								
Buffalo, NY.....	0	--	0	--	0	--	0	--
<b>Total (Canada).....</b>	<b>0</b>	<b>--</b>	<b>0</b>	<b>--</b>	<b>0</b>	<b>--</b>	<b>0</b>	<b>--</b>
Japan								
Kenai, AK.....	4,870	6.07	60,765	6.00	4,417	6.41	4,806	6.40
<b>Total (Japan).....</b>	<b>4,870</b>	<b>6.07</b>	<b>60,765</b>	<b>6.00</b>	<b>4,417</b>	<b>6.41</b>	<b>4,806</b>	<b>6.40</b>
Mexico								
Nogales, AZ .....	6	12.66	74	14.83	11	15.26	17	14.85
Otay Mesa, CA.....	2	10.33	99	12.33	5	13.21	11	13.04
<b>Total (Mexico).....</b>	<b>7</b>	<b>12.16</b>	<b>173</b>	<b>13.40</b>	<b>16</b>	<b>14.67</b>	<b>28</b>	<b>14.12</b>
Russia								
Kenai, AK.....	0	--	0	--	0	--	0	--
<b>Total (Russia) .....</b>	<b>0</b>	<b>--</b>	<b>0</b>	<b>--</b>	<b>0</b>	<b>--</b>	<b>0</b>	<b>--</b>
<b>Total LNG.....</b>	<b>4,878</b>	<b>6.08</b>	<b>60,938</b>	<b>6.02</b>	<b>4,433</b>	<b>6.44</b>	<b>4,834</b>	<b>6.45</b>
<b>Total Exports.....</b>	<b>69,221</b>	<b>6.58</b>	<b>723,958</b>	<b>6.83</b>	<b>71,923</b>	<b>7.57</b>	<b>69,688</b>	<b>7.21</b>

See footnotes at end of table.

**Table SR8. U.S. Natural Gas Exports by Point of Exit, 2006-2007**  
(Volumes in Million Cubic Feet; Average Prices in Dollars per Thousand Cubic Feet) – Continued

Point of Exit	2006							
	October		September		August		July	
	Volume	Average Price	Volume	Average Price	Volume	Average Price	Volume	Average Price
<b>Pipeline</b>								
Canada								
Detroit, MI .....	927	3.65	1,641	6.18	1,475	6.24	1,516	6.08
Havre, MT .....	1,734	4.67	1,950	4.91	1,787	6.10	1,980	5.33
Marysville, MI .....	270	4.60	219	6.77	225	6.96	224	5.79
Sault Ste. Marie, MI.....	148	4.98	94	6.51	74	6.87	60	5.65
St. Clair, MI .....	27,361	4.76	19,033	6.31	12,546	7.05	12,388	6.16
Sumas, WA .....	0	--	0	--	1,079	6.25	456	5.33
<b>Total (Canada).....</b>	<b>30,440</b>	<b>4.72</b>	<b>22,936</b>	<b>6.19</b>	<b>17,187</b>	<b>6.83</b>	<b>16,624</b>	<b>6.03</b>
Mexico								
Alamo, TX .....	1,105	5.67	1,179	5.21	1,279	7.44	3,890	6.04
Calexico, CA .....	520	4.46	465	6.64	477	6.92	480	5.86
Clint, TX .....	6,318	5.11	5,539	6.05	6,660	6.99	6,641	5.89
Del Rio, TX.....	0	--	0	--	0	--	0	--
Douglas, AZ .....	1,631	5.35	1,457	6.06	1,403	6.81	1,398	5.83
Eagle Pass, TX .....	190	4.69	167	6.57	171	6.56	142	6.02
El Paso, TX.....	585	5.64	438	4.81	528	7.10	398	5.92
McAllen, TX.....	476	7.85	586	5.16	2,583	7.39	3,024	6.09
Nogales, AZ .....	0	--	0	--	0	--	0	--
Ogilby, CA.....	8,158	5.18	9,344	5.28	10,442	7.02	11,657	5.98
Penitas, TX .....	0	--	0	--	0	--	0	--
Rio Bravo, TX.....	4,535	5.18	6,269	5.26	5,805	7.49	6,840	6.04
Roma, TX.....	1,750	6.21	463	5.26	2,563	7.27	2,173	6.12
<b>Total (Mexico).....</b>	<b>25,268</b>	<b>5.31</b>	<b>25,907</b>	<b>5.50</b>	<b>31,912</b>	<b>7.15</b>	<b>36,643</b>	<b>5.99</b>
<b>Total Pipeline.....</b>	<b>55,708</b>	<b>4.99</b>	<b>48,843</b>	<b>5.82</b>	<b>49,099</b>	<b>7.04</b>	<b>53,267</b>	<b>6.00</b>
<b>LNG</b>								
Canada								
Buffalo, NY.....	0	--	0	--	0	--	0	--
<b>Total (Canada).....</b>	<b>0</b>	<b>--</b>	<b>0</b>	<b>--</b>	<b>0</b>	<b>--</b>	<b>0</b>	<b>--</b>
Japan								
Kenai, AK.....	3,171	6.24	3,726	6.20	5,628	6.15	5,595	5.94
<b>Total (Japan).....</b>	<b>3,171</b>	<b>6.24</b>	<b>3,726</b>	<b>6.20</b>	<b>5,628</b>	<b>6.15</b>	<b>5,595</b>	<b>5.94</b>
Mexico								
Nogales, AZ .....	15	11.72	4	14.09	2	15.35	2	13.04
Otay Mesa, CA.....	10	10.33	10	12.60	10	12.94	11	11.89
<b>Total (Mexico).....</b>	<b>26</b>	<b>11.16</b>	<b>14</b>	<b>13.04</b>	<b>12</b>	<b>13.42</b>	<b>12</b>	<b>12.04</b>
Russia								
Kenai, AK.....	0	--	0	--	0	--	0	--
<b>Total (Russia) .....</b>	<b>0</b>	<b>--</b>	<b>0</b>	<b>--</b>	<b>0</b>	<b>--</b>	<b>0</b>	<b>--</b>
<b>Total LNG.....</b>	<b>3,196</b>	<b>6.28</b>	<b>3,740</b>	<b>6.22</b>	<b>5,640</b>	<b>6.17</b>	<b>5,607</b>	<b>5.95</b>
<b>Total Exports.....</b>	<b>58,904</b>	<b>5.06</b>	<b>52,583</b>	<b>5.90</b>	<b>54,739</b>	<b>6.98</b>	<b>58,874</b>	<b>6.02</b>

See footnotes at end of table.

**Table SR8. U.S. Natural Gas Exports by Point of Exit, 2006-2007**  
(Volumes in Million Cubic Feet; Average Prices in Dollars per Thousand Cubic Feet) – Continued

Point of Exit	2006							
	June		May		April		March	
	Volume	Average Price	Volume	Average Price	Volume	Average Price	Volume	Average Price
<b>Pipeline</b>								
Canada								
Detroit, MI .....	1,469	5.70	2,510	8.11	2,734	6.76	2,618	7.57
Havre, MT .....	1,651	5.28	1,631	5.69	1,649	6.32	1,704	6.19
Marysville, MI .....	230	5.86	220	7.13	218	7.19	226	7.30
Sault Ste. Marie, MI.....	64	5.99	101	7.09	55	7.14	647	7.15
St. Clair, MI .....	19,559	6.12	16,881	7.16	10,994	7.22	32,169	7.20
Sumas, WA .....	0	--	0	--	0	--	44	6.40
<b>Total (Canada).....</b>	<b>22,974</b>	<b>6.03</b>	<b>21,343</b>	<b>7.16</b>	<b>15,651</b>	<b>7.05</b>	<b>37,407</b>	<b>7.18</b>
Mexico								
Alamo, TX .....	5,190	6.04	4,999	6.87	1,399	7.43	2,307	6.73
Calexico, CA .....	460	5.55	462	6.38	404	6.41	430	6.35
Clint, TX .....	6,657	5.90	7,592	5.94	4,362	6.41	6,012	6.05
Del Rio, TX.....	0	--	0	--	0	--	0	--
Douglas, AZ .....	1,309	5.74	1,431	5.90	1,423	6.13	1,445	6.14
Eagle Pass, TX .....	179	6.03	185	7.04	164	7.09	182	6.80
El Paso, TX.....	488	5.98	650	5.61	576	6.26	880	6.99
McAllen, TX.....	3,496	6.26	2,574	6.42	1,428	7.41	1,690	6.91
Nogales, AZ .....	0	--	0	--	0	--	0	--
Ogilby, CA.....	9,586	5.70	6,634	5.73	6,263	6.19	6,653	6.26
Penitas, TX .....	0	--	0	--	0	--	0	--
Rio Bravo, TX.....	6,838	6.23	7,588	6.36	4,865	7.17	5,768	6.78
Roma, TX.....	2,933	6.29	3,509	6.32	3,063	7.39	1,099	7.10
<b>Total (Mexico).....</b>	<b>37,136</b>	<b>5.99</b>	<b>35,625</b>	<b>6.20</b>	<b>23,948</b>	<b>6.73</b>	<b>26,466</b>	<b>6.46</b>
<b>Total Pipeline.....</b>	<b>60,110</b>	<b>6.01</b>	<b>56,968</b>	<b>6.56</b>	<b>39,599</b>	<b>6.85</b>	<b>63,872</b>	<b>6.88</b>
<b>LNG</b>								
Canada								
Buffalo, NY.....	0	--	0	--	0	--	0	--
<b>Total (Canada).....</b>	<b>0</b>	<b>--</b>	<b>0</b>	<b>--</b>	<b>0</b>	<b>--</b>	<b>0</b>	<b>--</b>
Japan								
Kenai, AK.....	5,586	5.93	5,575	5.93	5,570	5.74	5,556	5.68
<b>Total (Japan).....</b>	<b>5,586</b>	<b>5.93</b>	<b>5,575</b>	<b>5.93</b>	<b>5,570</b>	<b>5.74</b>	<b>5,556</b>	<b>5.68</b>
Mexico								
Nogales, AZ .....	2	13.61	2	15.05	2	14.55	3	16.61
Otay Mesa, CA.....	10	11.48	12	12.39	10	12.29	2	12.85
<b>Total (Mexico).....</b>	<b>12</b>	<b>11.91</b>	<b>14</b>	<b>12.86</b>	<b>13</b>	<b>12.72</b>	<b>5</b>	<b>15.37</b>
Russia								
Kenai, AK.....	0	--	0	--	0	--	0	--
<b>Total (Russia) .....</b>	<b>0</b>	<b>--</b>	<b>0</b>	<b>--</b>	<b>0</b>	<b>--</b>	<b>0</b>	<b>--</b>
<b>Total LNG.....</b>	<b>5,598</b>	<b>5.94</b>	<b>5,589</b>	<b>5.95</b>	<b>5,582</b>	<b>5.76</b>	<b>5,561</b>	<b>5.69</b>
<b>Total Exports.....</b>	<b>65,708</b>	<b>6.00</b>	<b>62,557</b>	<b>6.50</b>	<b>45,181</b>	<b>6.72</b>	<b>69,434</b>	<b>6.79</b>

See footnotes at end of table.



**Table SR8. U.S. Natural Gas Exports by Point of Exit, 2006-2007**

(Volumes in Million Cubic Feet; Average Prices in Dollars per Thousand Cubic Feet) – Continued

Point of Exit	2006			
	February		January	
	Volume	Average Price	Volume	Average Price
<b>Pipeline</b>				
Canada				
Detroit, MI .....	2,292	9.06	2,312	12.96
Havre, MT .....	1,493	7.16	1,734	8.54
Marysville, MI .....	205	8.71	227	11.74
Sault Ste. Marie, MI .....	842	8.32	929	10.70
St. Clair, MI .....	27,829	8.37	26,777	10.69
Sumas, WA .....	58	6.96	0	--
<b>Total (Canada) .....</b>	<b>32,718</b>	<b>8.36</b>	<b>31,979</b>	<b>10.74</b>
Mexico				
Alamo, TX .....	1,147	7.38	1,562	8.87
Calexico, CA .....	355	7.52	368	9.93
Clint, TX .....	5,125	6.82	5,502	8.47
Del Rio, TX .....	0	--	0	--
Douglas, AZ .....	1,249	7.02	909	7.97
Eagle Pass, TX .....	173	7.27	193	8.73
El Paso, TX .....	772	6.99	690	7.66
McAllen, TX .....	1,456	7.46	318	9.24
Nogales, AZ .....	0	--	0	--
Ogilby, CA .....	6,387	7.20	5,134	8.81
Penitas, TX .....	0	--	0	--
Rio Bravo, TX .....	3,469	7.50	3,101	7.74
Roma, TX .....	336	8.18	265	9.37
<b>Total (Mexico) .....</b>	<b>20,469</b>	<b>7.19</b>	<b>18,043</b>	<b>8.48</b>
<b>Total Pipeline .....</b>	<b>53,188</b>	<b>7.91</b>	<b>50,022</b>	<b>R9.93</b>
<b>LNG</b>				
Canada				
Buffalo, NY .....	0	--	0	--
<b>Total (Canada) .....</b>	<b>0</b>	<b>--</b>	<b>0</b>	<b>--</b>
Japan				
Kenai, AK .....	5,563	5.79	5,572	5.88
<b>Total (Japan) .....</b>	<b>5,563</b>	<b>5.79</b>	<b>5,572</b>	<b>5.88</b>
Mexico				
Nogales, AZ .....	5	17.01	7	19.67
Otay Mesa, CA .....	10	13.45	0	--
<b>Total (Mexico) .....</b>	<b>15</b>	<b>14.58</b>	<b>7</b>	<b>19.67</b>
Russia				
Kenai, AK .....	0	--	0	--
<b>Total (Russia) .....</b>	<b>0</b>	<b>--</b>	<b>0</b>	<b>--</b>
<b>Total LNG .....</b>	<b>5,578</b>	<b>5.81</b>	<b>5,579</b>	<b>5.90</b>
<b>Total Exports .....</b>	<b>58,766</b>	<b>7.71</b>	<b>55,600</b>	<b>9.52</b>

-- Not applicable.

R = Revised data.

**Notes:** Totals may not equal sum of components due to independent rounding. Geographic coverage is the continental United States including Alaska.

**Sources:** Energy Information Administration based on data from the Office of Fossil Energy, U.S. Department of Energy, *Natural Gas Imports and Exports*.

**Table SR9. Summary of U.S. Natural Gas Exports, 1978-2007**

(Volumes in Million Cubic Feet; Average Prices in Dollars per Thousand Cubic Feet)

Year and Month	Pipeline				Total Pipeline	
	Canada		Mexico		Volume	Average Price
	Volume	Average Price	Volume	Average Price		
1978 Total.....	66	1.79	4,033	1.65	4,098	1.66
1979 Total.....	76	2.04	4,308	1.97	4,384	1.97
1980 Total.....	113	3.31	3,886	2.47	3,999	2.50
1981 Total.....	106	4.79	3,337	3.37	3,443	3.41
1982 Total.....	162	4.95	1,705	5.17	1,867	5.15
1983 Total.....	136	4.60	1,646	4.79	1,782	4.78
1984 Total.....	127	4.19	1,786	4.48	1,913	4.46
1985 Total.....	178	3.06	2,207	3.99	2,385	3.92
1986 Total.....	9,203	2.12	1,896	3.49	11,099	2.35
1987 Total.....	3,297	1.81	2,125	3.18	5,421	2.35
1988 Total.....	19,738	2.02	2,327	3.21	22,065	2.14
1989 Total.....	38,443	2.00	17,004	2.14	55,447	2.05
1990 Total.....	17,359	2.70	15,659	1.88	33,018	2.31
1991 Total.....	14,791	1.91	60,448	1.76	75,239	1.79
1992 Total.....	67,777	1.83	95,973	1.90	163,750	1.88
1993 Total.....	44,518	2.14	39,676	2.02	84,195	2.08
1994 Total.....	52,556	2.42	46,500	1.68	99,057	2.08
1995 Total.....	27,554	1.96	61,283	1.50	88,836	1.64
1996 Total.....	51,905	2.67	33,840	2.11	85,745	2.45
1997 Total.....	56,447	2.52	38,372	2.46	94,818	2.49
1998 Total.....	39,891	2.25	53,133	2.04	93,023	2.13
1999 Total.....	38,508	2.35	61,025	2.27	99,533	2.30
2000 Total.....	72,586	3.66	105,102	4.26	177,688	4.02
2001 Total.....	166,690	3.97	140,370	4.34	307,060	4.14
2002 Total.....	189,313	3.35	263,078	3.30	452,391	3.32
2003 Total.....	270,988	6.03	342,859	5.36	613,848	5.66
2004 Total.....	394,585	6.47	397,086	5.89	791,671	6.18
2005 Total.....	358,280	7.80	304,954	7.74	663,234	7.77
<b>2006</b>						
January.....	31,979	10.74	18,043	8.48	50,022	9.93
February.....	32,718	8.36	20,469	7.19	53,188	7.91
March.....	37,407	7.18	26,466	6.46	63,872	6.88
April.....	15,651	7.05	23,948	6.73	39,599	6.85
May.....	21,343	7.16	35,625	6.20	56,968	6.56
June.....	22,974	6.03	37,136	5.99	60,110	6.01
July.....	16,624	6.03	36,643	5.99	53,267	6.00
August.....	17,187	6.83	31,912	7.15	49,099	7.04
September.....	22,936	6.19	25,907	5.50	48,843	5.82
October.....	30,440	4.72	25,268	5.31	55,708	4.99
November.....	44,928	7.48	19,926	6.78	64,854	7.26
December.....	46,878	7.91	20,613	7.02	67,490	7.64
<b>Total.....</b>	<b>341,065</b>	<b>7.32</b>	<b>321,955</b>	<b>6.46</b>	<b>663,020</b>	<b>6.90</b>
<b>2007</b>						
January.....	40,663	6.43	23,680	6.95	64,344	6.62
February.....	34,287	7.56	17,236	7.35	51,522	7.49
March.....	53,430	7.61	18,853	6.91	72,282	7.42
April.....	31,748	7.73	15,479	7.11	47,227	7.53
May.....	35,031	7.74	23,869	7.34	58,901	7.58
June.....	28,197	7.68	25,763	7.11	53,960	7.41
July.....	37,897	6.81	28,516	6.12	66,412	6.51
August.....	27,608	6.06	29,945	6.14	57,554	6.10
September.....	32,984	5.78	28,484	5.84	61,468	5.81
October.....	31,094	6.66	28,902	6.22	59,996	6.45
November.....	57,587	7.45	25,661	6.24	83,249	7.08
December.....	71,671	7.64	25,384	6.76	97,055	7.41
<b>Total.....</b>	<b>482,196</b>	<b>7.17</b>	<b>291,773</b>	<b>6.60</b>	<b>773,969</b>	<b>6.96</b>

See footnotes at end of table.

**Table SR9. Summary of U.S. Natural Gas Exports, 1978-2007**

(Volumes in Million Cubic Feet; Average Prices in Dollars per Thousand Cubic Feet) – Continued

Year and Month	LNG					
	Canada		Japan		Mexico	
	Volume	Average Price	Volume	Average Price	Volume	Average Price
1978 Total.....	0	--	48,434	2.17	0	--
1979 Total.....	0	--	51,289	2.32	0	--
1980 Total.....	0	--	44,732	4.90	0	--
1981 Total.....	0	--	55,929	6.05	0	--
1982 Total.....	0	--	49,861	5.83	0	--
1983 Total.....	0	--	52,857	5.11	0	--
1984 Total.....	0	--	52,840	4.93	0	--
1985 Total.....	0	--	52,883	4.81	0	--
1986 Total.....	0	--	50,172	2.91	0	--
1987 Total.....	0	--	48,599	3.15	0	--
1988 Total.....	0	--	51,573	2.99	0	--
1989 Total.....	0	--	51,424	3.01	0	--
1990 Total.....	0	--	52,546	3.59	0	--
1991 Total.....	0	--	54,005	3.71	0	--
1992 Total.....	0	--	52,532	3.43	0	--
1993 Total.....	0	--	55,989	3.34	0	--
1994 Total.....	0	--	62,682	3.18	0	--
1995 Total.....	0	--	65,283	3.41	0	--
1996 Total.....	0	--	67,648	3.65	0	--
1997 Total.....	0	--	62,187	3.83	0	--
1998 Total.....	0	--	65,951	2.91	33	5.69
1999 Total.....	0	--	63,607	3.08	275	6.95
2000 Total.....	0	--	65,610	4.31	418	5.82
2001 Total.....	0	--	65,753	4.39	465	5.82
2002 Total.....	0	--	63,439	4.07	403	5.82
2003 Total.....	0	--	65,698	4.47	376	5.82
2004 Total.....	0	--	62,099	4.94	368	8.19
2005 Total.....	0	--	65,124	5.77	242	11.87
<b>2006</b>						
January.....	0	--	5,572	5.88	7	19.67
February.....	0	--	5,563	5.79	15	14.58
March.....	0	--	5,556	5.68	5	15.37
April.....	0	--	5,570	5.74	13	12.72
May.....	0	--	5,575	5.93	14	12.86
June.....	0	--	5,586	5.93	12	11.91
July.....	0	--	5,595	5.94	12	12.04
August.....	0	--	5,628	6.15	12	13.42
September.....	0	--	3,726	6.20	14	13.04
October.....	0	--	3,171	6.24	26	11.16
November.....	0	--	4,806	6.40	28	14.12
December.....	0	--	4,417	6.41	16	14.67
<b>Total.....</b>	<b>0</b>	<b>--</b>	<b>60,765</b>	<b>6.00</b>	<b>173</b>	<b>13.40</b>
<b>2007</b>						
January.....	0	--	4,870	6.07	7	12.16
February.....	0	--	5,001	5.88	16	14.62
March.....	0	--	4,745	5.83	8	14.35
April.....	0	--	3,502	5.85	7	12.74
May.....	0	--	3,568	5.63	9	13.38
June.....	0	--	3,342	5.71	6	14.15
July.....	2	12.07	4,239	5.86	7	12.97
August.....	0	--	4,310	6.05	6	12.92
September.....	0	--	3,604	6.13	5	11.40
October.....	0	--	1,680	6.20	6	11.98
November.....	0	--	3,204	6.32	5	12.83
December.....	0	--	4,436	6.27	5	13.47
<b>Total.....</b>	<b>2</b>	<b>12.07</b>	<b>46,501</b>	<b>5.97</b>	<b>87</b>	<b>13.30</b>

See footnotes at end of table.

**Table SR9. Summary of U.S. Natural Gas Exports, 1978-2007**

(Volumes in Million Cubic Feet; Average Prices in Dollars per Thousand Cubic Feet) – Continued

Year and Month	LNG		Total LNG		Grand Total	
	Russia		Volume	Average Price	Volume	Average Price
	Volume	Average Price				
1978 Total.....	0	--	48,434	2.17	52,532	2.13
1979 Total.....	0	--	51,289	2.32	55,673	2.29
1980 Total.....	0	--	44,732	4.90	48,731	4.70
1981 Total.....	0	--	55,929	6.05	59,372	5.90
1982 Total.....	0	--	49,861	5.83	51,728	5.81
1983 Total.....	0	--	52,857	5.11	54,639	5.10
1984 Total.....	0	--	52,840	4.93	54,753	4.92
1985 Total.....	0	--	52,883	4.81	55,268	4.77
1986 Total.....	0	--	50,172	2.91	61,271	2.81
1987 Total.....	0	--	48,599	3.15	54,020	3.07
1988 Total.....	0	--	51,573	2.99	73,638	2.74
1989 Total.....	0	--	51,424	3.01	106,871	2.51
1990 Total.....	0	--	52,546	3.59	85,565	3.10
1991 Total.....	0	--	54,005	3.71	129,244	2.59
1992 Total.....	0	--	52,532	3.43	216,282	2.25
1993 Total.....	0	--	55,989	3.34	140,183	2.59
1994 Total.....	0	--	62,682	3.18	161,738	2.50
1995 Total.....	0	--	65,283	3.41	154,119	2.39
1996 Total.....	0	--	67,648	3.65	153,393	2.97
1997 Total.....	0	--	62,187	3.83	157,006	3.02
1998 Total.....	0	--	65,984	2.91	159,007	2.45
1999 Total.....	0	--	63,882	3.10	163,415	2.61
2000 Total.....	0	--	66,028	4.32	243,716	4.10
2001 Total.....	0	--	66,218	4.40	373,278	4.19
2002 Total.....	0	--	63,842	4.08	516,233	3.41
2003 Total.....	0	--	66,075	4.47	679,922	5.54
2004 Total.....	0	--	62,467	4.96	854,138	6.09
2005 Total.....	0	--	65,367	5.79	728,601	7.59
<b>2006</b>						
January.....	0	--	5,579	5.90	55,600	9.52
February.....	0	--	5,578	5.81	58,766	7.71
March.....	0	--	5,561	5.69	69,434	6.79
April.....	0	--	5,582	5.76	45,181	6.72
May.....	0	--	5,589	5.95	62,557	6.50
June.....	0	--	5,598	5.94	65,708	6.00
July.....	0	--	5,607	5.95	58,874	6.02
August.....	0	--	5,640	6.17	54,739	6.98
September.....	0	--	3,740	6.22	52,583	5.90
October.....	0	--	3,196	6.28	58,904	5.06
November.....	0	--	4,834	6.45	69,688	7.21
December.....	0	--	4,433	6.44	71,923	7.57
<b>Total.....</b>	<b>0</b>	<b>--</b>	<b>60,938</b>	<b>6.02</b>	<b>723,958</b>	<b>6.83</b>
<b>2007</b>						
January.....	0	--	4,878	6.08	69,221	6.58
February.....	0	--	5,017	5.91	56,539	7.35
March.....	0	--	4,753	5.85	77,036	7.33
April.....	0	--	3,509	5.86	50,736	7.41
May.....	0	--	3,577	5.65	62,477	7.47
June.....	0	--	3,349	5.73	57,309	7.31
July.....	0	--	4,247	5.87	70,660	6.47
August.....	0	--	4,316	6.06	61,870	6.10
September.....	0	--	3,609	6.14	65,077	5.83
October.....	1,895	12.12	3,580	9.34	63,576	6.61
November.....	0	--	3,209	6.33	86,458	7.05
December.....	0	--	4,441	6.28	101,495	7.36
<b>Total.....</b>	<b>1,895</b>	<b>12.12</b>	<b>48,485</b>	<b>6.23</b>	<b>822,454</b>	<b>6.92</b>

-- Not applicable.

**Notes:** Totals may not equal sum of components due to independent rounding. Geographic coverage is the continental United States including Alaska. LNG exports to Mexico are shipped by truck.

**Sources:** 1955-1971: Federal Power Commission, informally collected by letter.

1972-1994: Form FPC-14, "Annual Report for Importers and Exporters of Natural Gas." 1995 to present: Energy Information Administration, based on data from the Office of Fossil Energy, U.S. Department of Energy, *Natural Gas Imports and Exports*.