

OVERVIEW

Carl O. Bauer

Director, NETL



Purpose of Open House

- **Potential offerors on the follow-on solicitations for NETL's**
 - Research and Development Support
 - Technology and Management Support
- **Intent of this Open House is to encourage full and open competition resulting in the best value for NETL**

National Energy Technology Laboratory

- **Only DOE national lab dedicated to fossil energy**
 - Fossil fuels provide 85% of U.S. energy supply
- **One lab, five locations, one management structure**
- **~1,200 Federal and support-contractor employees**
- **Research spans fundamental science to technology demonstrations**



Alaska



Oklahoma



Oregon

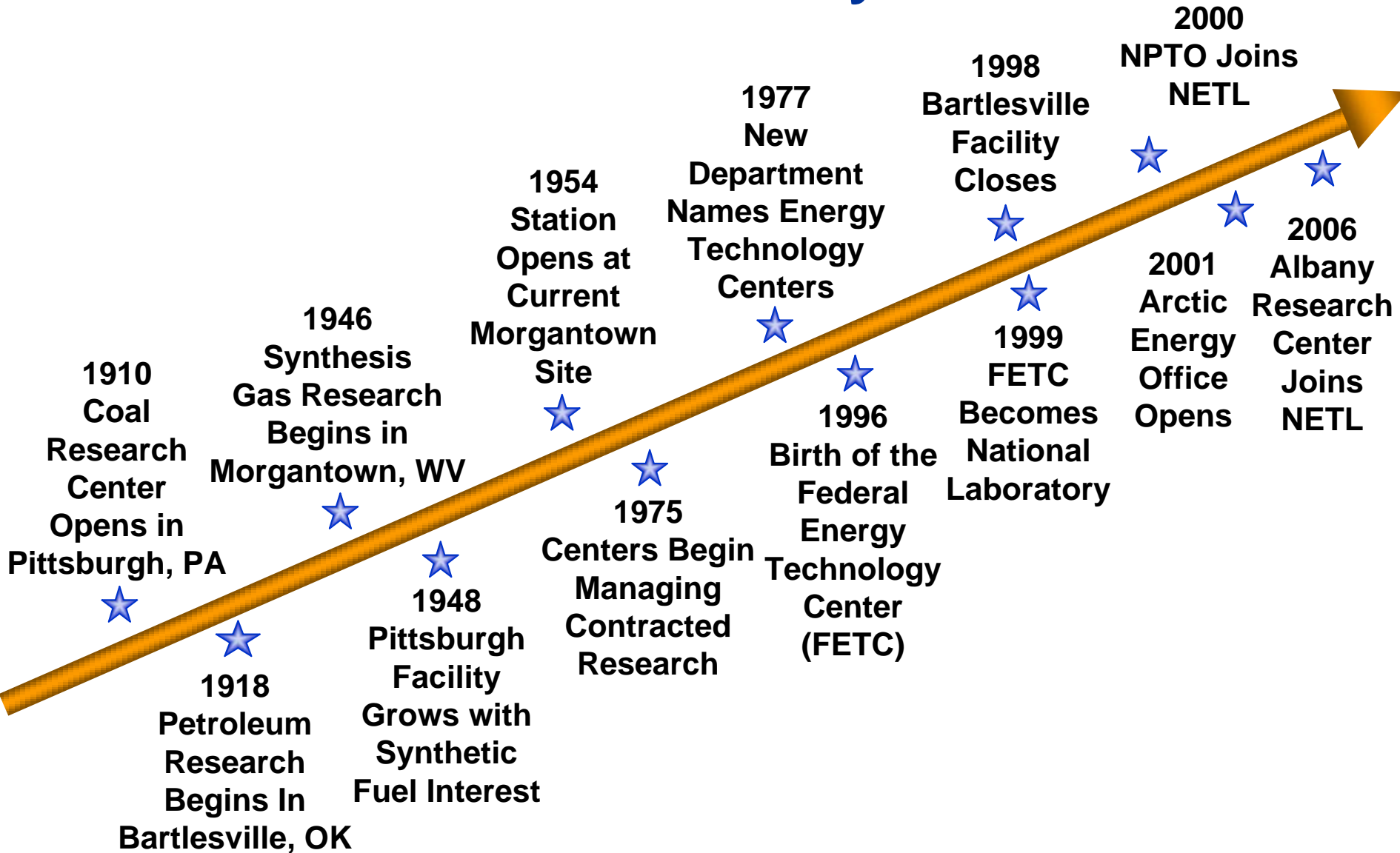


Pennsylvania



West Virginia

NETL History



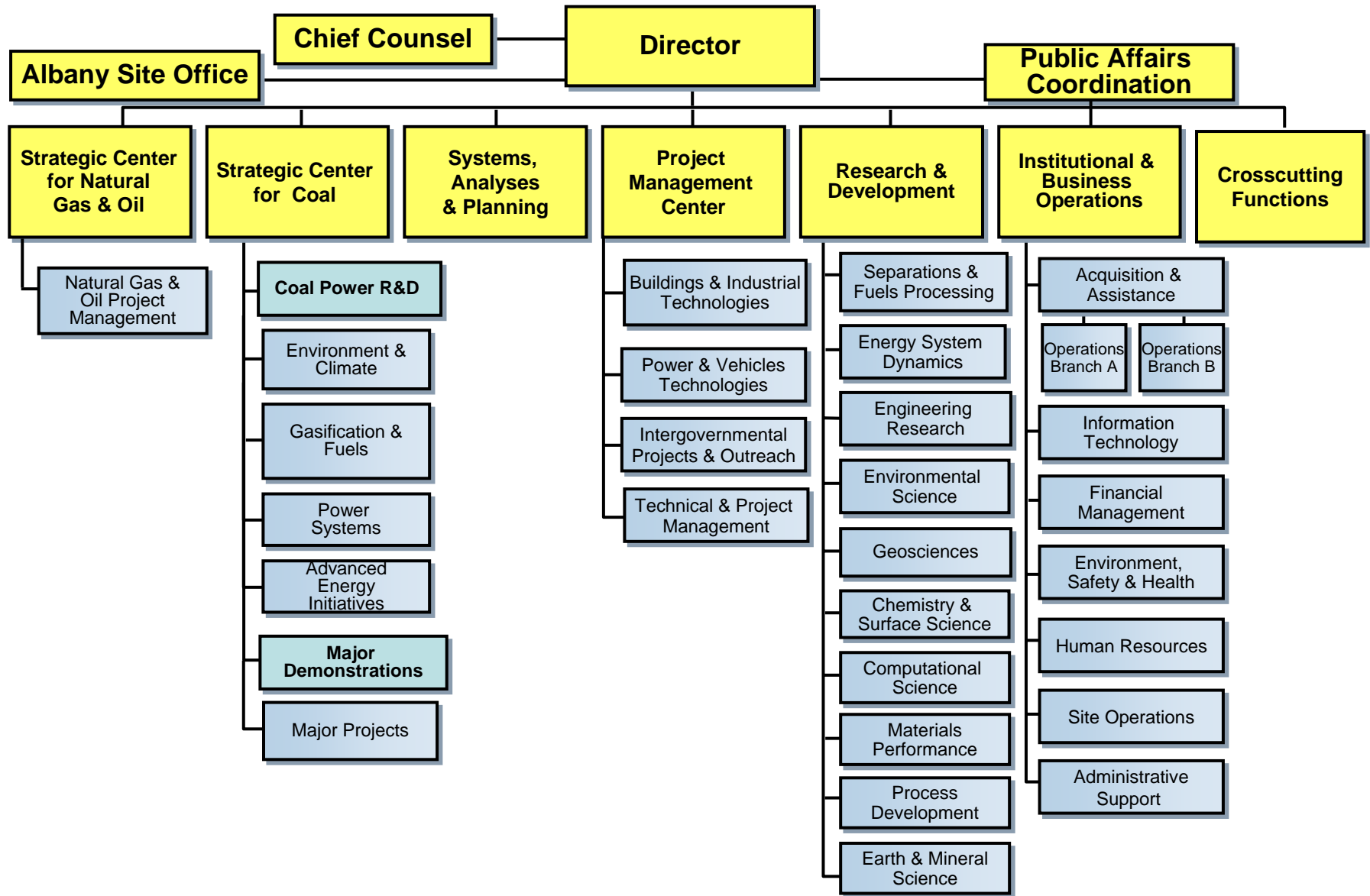
NETL Facilities

- **Morgantown, WV, and Pittsburgh, PA**
 - Facilities 65 miles apart
 - 137 acres (Morgantown) and 61 acres (Pittsburgh)
 - 81 permanent and temporary buildings > 805,000 sq. ft.
- **Tulsa, OK, and Fairbanks, AK**
 - Housed in leased space
 - 15,900 sq. ft. (Tulsa)
 - 2,500 sq. ft. (Alaska)
- **Albany, OR**
 - 44 acres
 - 38 buildings > 230,000 sq. ft.



*New Technology Support
Facility Building
Morgantown*

National Energy Technology Laboratory



NETL Mission

Conduct and implement research, development, and demonstration programs to resolve the environmental, supply, and reliability constraints of producing and using fossil resources



Accomplishing Our Mission

- **Conduct onsite research**
- **Support energy policy development**
- **Implement and manage extramural RD&D**



Focus on Education

- **Nearly 500 extramural projects with academic institutions**
- **50 intramural projects with 100 academic collaborators**
- **Almost 50 Research Associates**
- **Community initiatives**
 - Speakers' bureau
 - Visiting professor program
 - Adopt-a-School Program
 - Donation of computers and equipment
 - Science Bowl
 - Job shadowing for high school students
 - Lab tours
 - Training in science for K-12 teachers
 - Minority mentoring
 - Co-op program with local university



Outcomes from NETL's Programs

Technology

- Assist in providing U.S. acceptable, affordable, and available energy in mid- to longer-term

Policy

- Positively impact development of sound energy policies

Competitiveness

- Help maintain technology competitiveness of U.S. energy industry

Stability

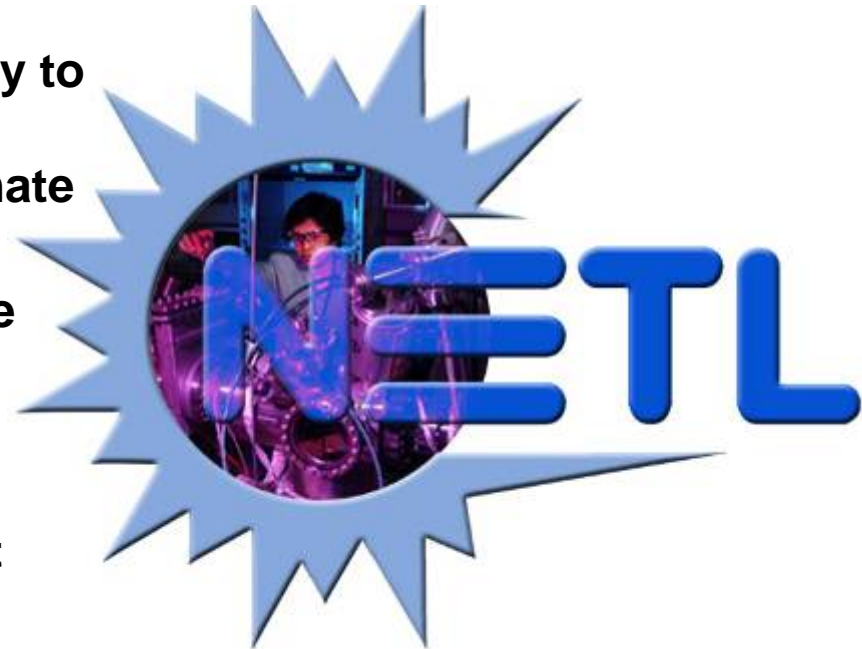
- Appropriately transfer technology to developing countries to improve geopolitical stability / global climate

Workforce

- Provide trained energy workforce through university research programs

Region

- Regional economic development



Site Support Contracts = Critical Growth Opportunity

- **Goal – Support DOE’s Mission by Enhancing NETL’s National Laboratory Status**
 - **Engage industry & universities in on-site R&D, utilizing NETL’s unique equipment & facilities**
 - **Boost analytical capabilities - create commercially viable solutions to national energy & environmental problems**
 - **Access to world class talent**
 - **Promote American competitive initiative - develop engineers and scientist, maintaining US leadership in energy research**
 - **Enhance program - value engineering and risk assessment**
 - **Improve project management – databases, documentation of performance**
 - **Increase NEPA support for large demonstration projects**

Sources Sought

- **Sources Sought Notices – Market Surveys Posted by 6/6/08**
c.o.b to: <http://e-center.doe.gov/> *each sources sought notice will have its own unique address within the general mapping.*
 - **Research and Engineering Support**
 - **Energy Sector Planning and Analysis**
 - **Program Performance Management**
 - **Project Execution and Integration**
- *The links will also be posted to the electronic reading room at*
<http://www.netl.doe.gov/business/solicitations/ssc2008/index.html>

Sources Sought

Research and Engineering Support

- **Provide world-class basic and fundamental scientific and engineering research and technology development support for NETL's Office of Research and Development**
- **Support NETL ongoing investigation, identification, development, and transfer of break-through energy technologies to provide the nation with economic and environmental options that support continued use of domestic fossil fuels**
 - **Research portfolio planning and analysis**
 - **Private sector (e.g., industry and academia) expertise in cross-cutting technical areas**
 - **Design, engineering, and drafting services**
 - **Device fabrication and testing**
 - **Test unit construction, shakedown, operation, and modification**
 - **Test unit decontamination, decommissioning, and dismantlement**
 - **Computer based modeling, simulation and visualization**

Sources Sought

Energy Sector Planning and Analysis

- **Provide world-class technical, business, economic, and energy market expertise through the responsible NETL offices to support advancement of current and development of future program initiatives.**
 - **Strategic planning and analysis**
 - **Expert scientific and engineering analysis of technology options/developmental pathways**
 - **Programmatic benefits analysis**
 - **Quick-response technical/economic/policy analysis of potential new initiatives and technologies**
 - **Expert process simulation and modeling, state-of-the-art systems, and**
 - **Analysis of energy systems interdependencies, infrastructure and policy implications**

Sources Sought

Program Performance Management

- **Provide program and portfolio management expertise through the responsible NETL offices to effectively execute responsibilities assigned by the cognizant HQ program office.**
 - **Annual and multi-year program and budget planning documentation**
 - **Portfolio analysis and technology transfer/deployment**
 - **Program outreach, communications and documentation, including workshops/conferences and related information management**
 - **Program performance assessments and related information management**
 - **Program situational analysis, e.g. technology state-of-the-art, market trends, legislative and regulatory assessments**
 - **Program processes, practices and procedures - interface with HQ requirements**

Source Sought

Project Execution and Integration

- **Provide technical and project management expertise primarily at the NETL division/functional team level in support of:**
 - **Procurement planning and execution**
 - **Project control, oversight, and assistance**
 - **Technical and cost validation assessments**
 - **Project and program peer reviews**
 - **Project-specific information management, dissemination and interface with program outreach functions**
 - **Project/program management training and process improvement functions**

Procurement Sensitive

Site Visit

- **The following will be posted to the IIPS and NETL Internet (www.netl.doe.gov) Sites**
 - Attendees list
 - Site visit presentations
 - Text information on tour stops covered during site tour
 - Video of presentations and tours

Information on Site Visit

- **Site Visit:**
 - Pittsburgh – June 4, 2008 (8:00 a.m. – 12:30 p.m.)
 - Morgantown – June 5, 2008 (12:00 p.m. – 4:00 p.m.)
 - Directions to NETL’s Morgantown site are included in the handout and available upon request
- **Site Visit Will Primarily Encompass:**
 - R&D Activities
- **Questions:**
 - Questions arising from the site visit should be submitted (and will be answered) through the IIPS (Industry Interactive Procurement System) “Submit Question” feature
- **No Photography Will Be Permitted**