



---

# GES DISC Data Operations and Services

Mike Theobald  
GES DISC



# Production Highlights

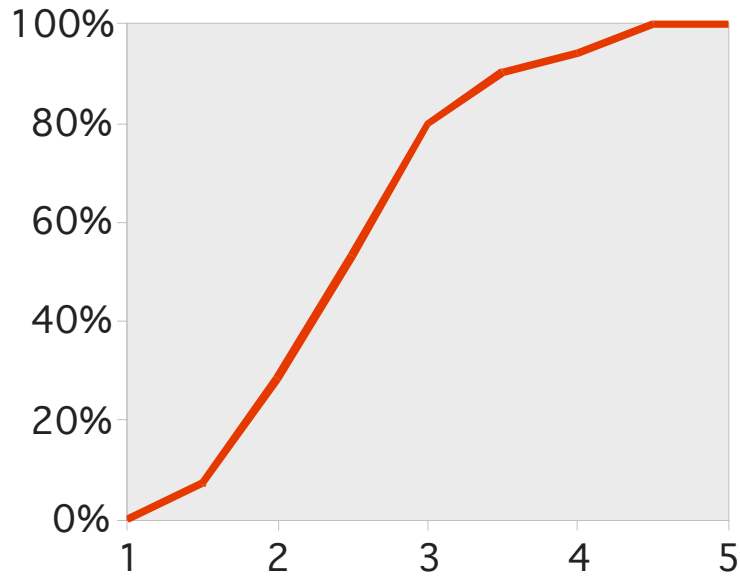
---

- Completed V5.0 Reprocessing with a net rate of 13X.
- Integrated V5.2 algorithms and reprocessed from start of AMSU Ch. 4 degradation.
- Integrated L3 Support Algorithm
- Starting to replace/upgrade some hardware

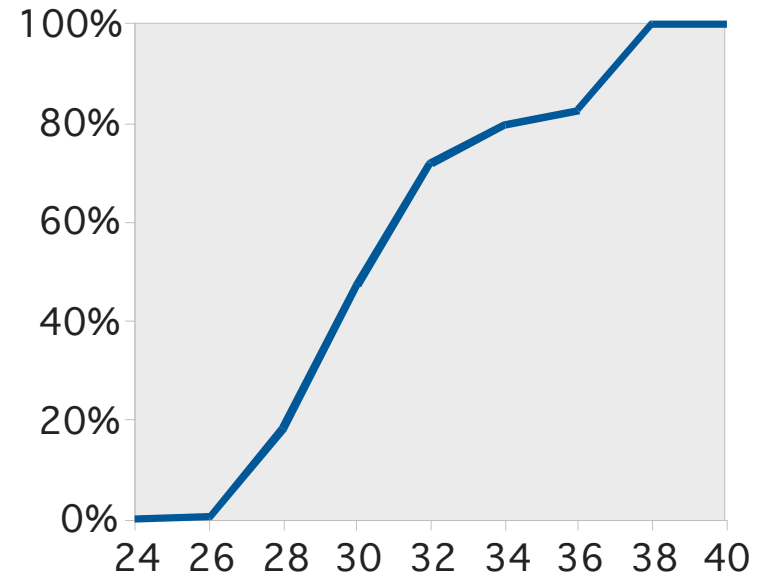


# Data Production Latency

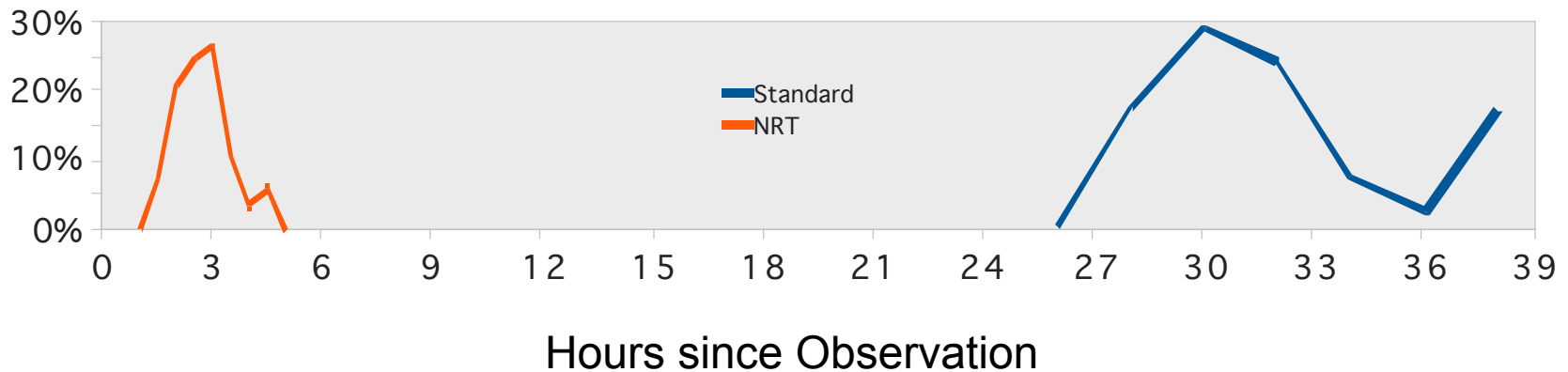
### NRT AIRI2CCF Latency



### Standard AIRI2CCF Latency



### NRT vs Standard





# Archive Highlights

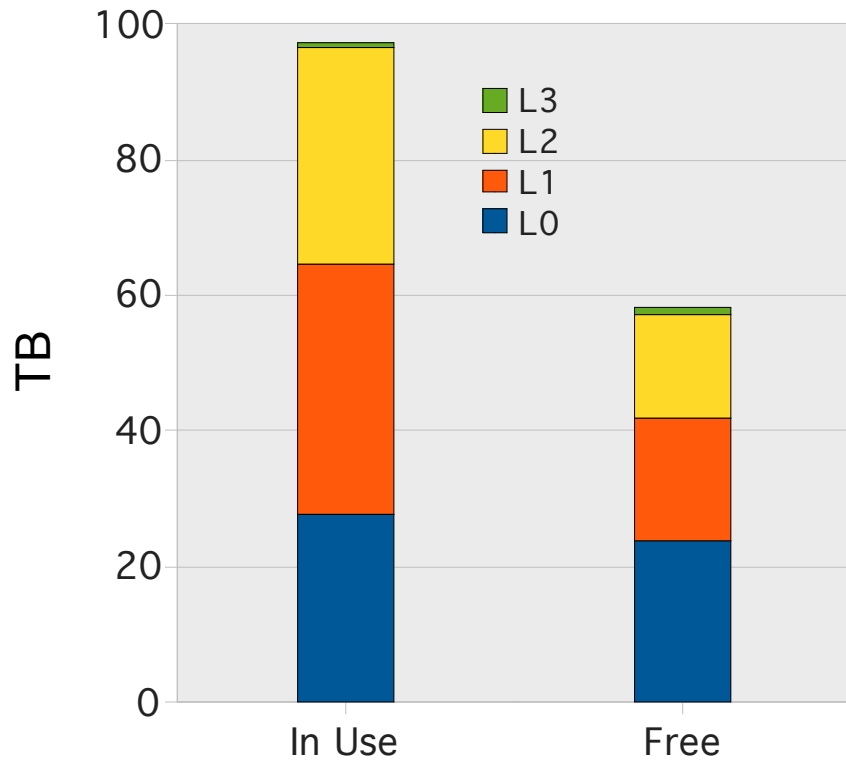
---

- S4PA archive and distribution system
  - 6 separate servers
    - 100 TB
    - 8,000,000 granules
  - All data backed up on tape
    - Redundant disk copies of L0 data
    - Disk files and tapes verified regularly
- Additional capacity is planned
  - Technology refresh of L0 servers underway

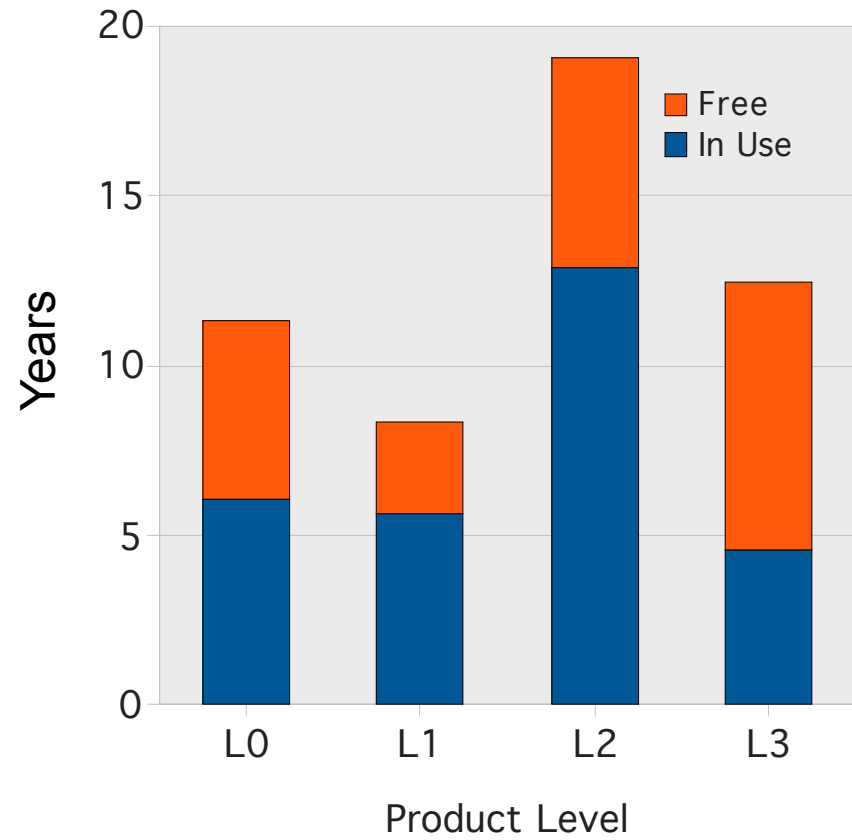


# Archive Capacity

### Terabytes



### Data Years





# 2008 Distribution Highlights

---

## ■ 146 TB Net Volume

- L1: 106.3 TB
- L2: 26.4 TB
- L3: 0.4 TB
- NRT: 6.6 TB
- L0: 6.6 TB

## ■ Peak Distribution

- 2 TB/day
- 220,000 granules

## ■ 10 Million Granules

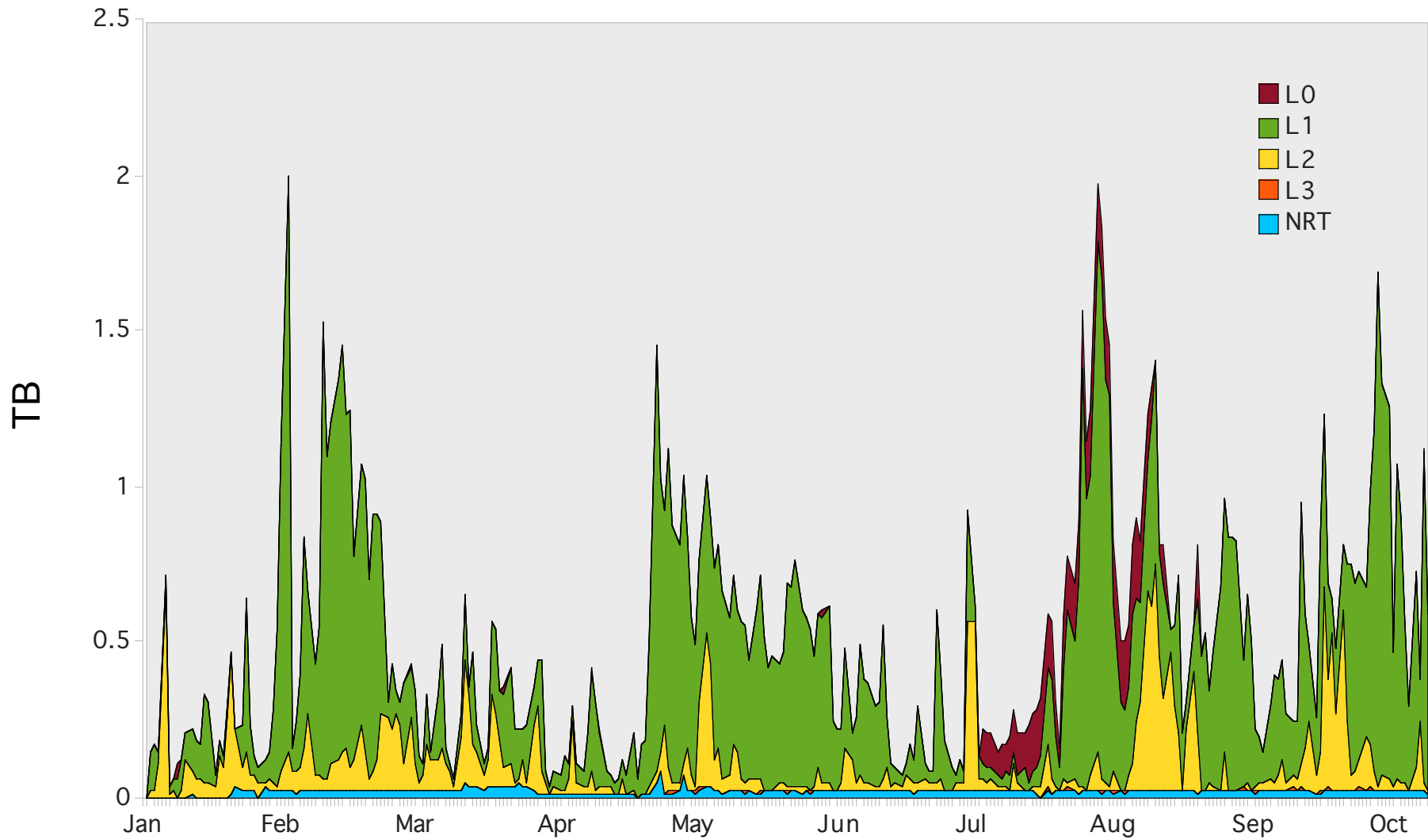
- L1: 2,700,000
- L2: 6,500,000
- L3: 7,000
- NRT: 500,000
- L0: 100,000

## ■ 1477 distinct network addresses

## ■ 50+ different top-level domains

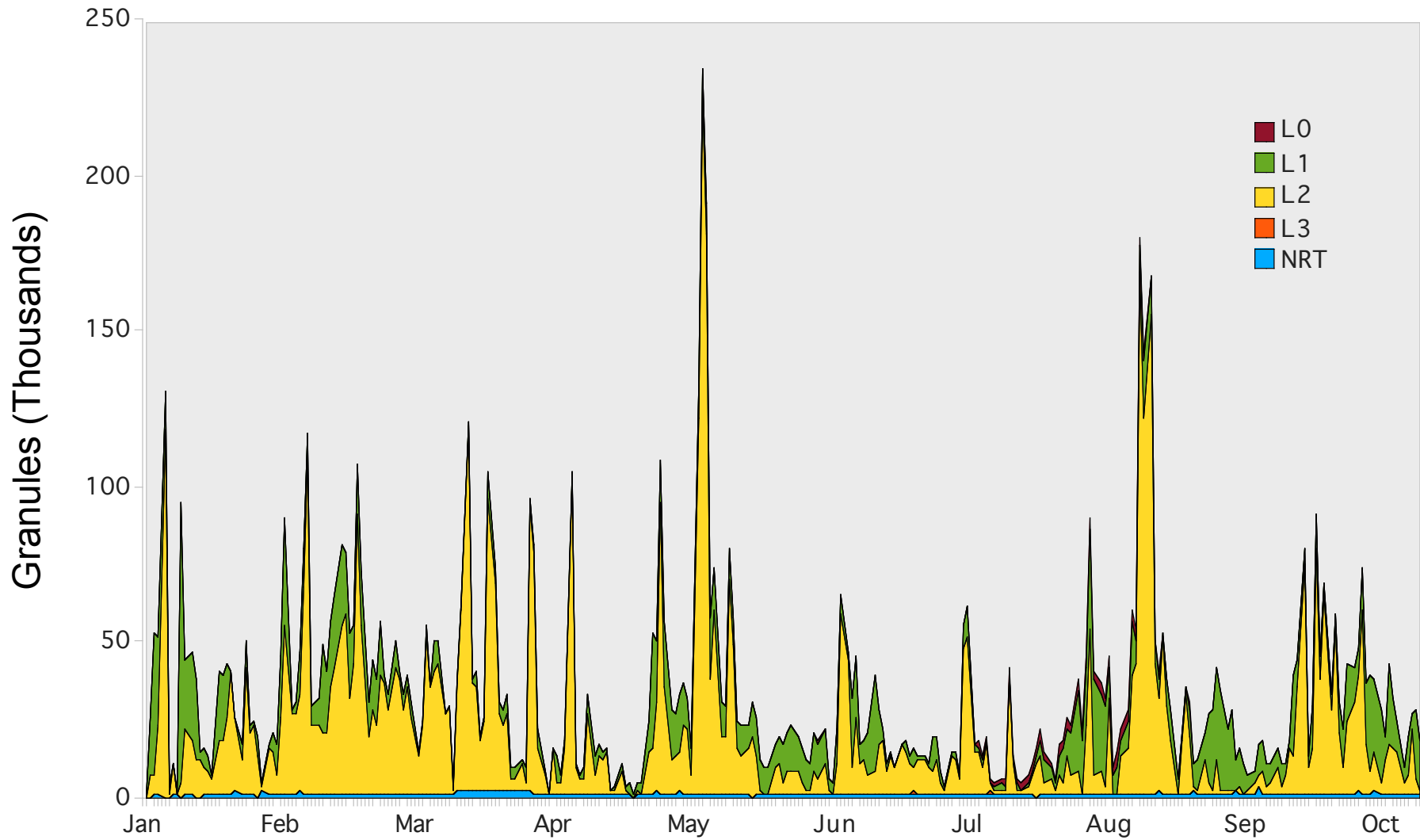


# Data Distribution – Volume





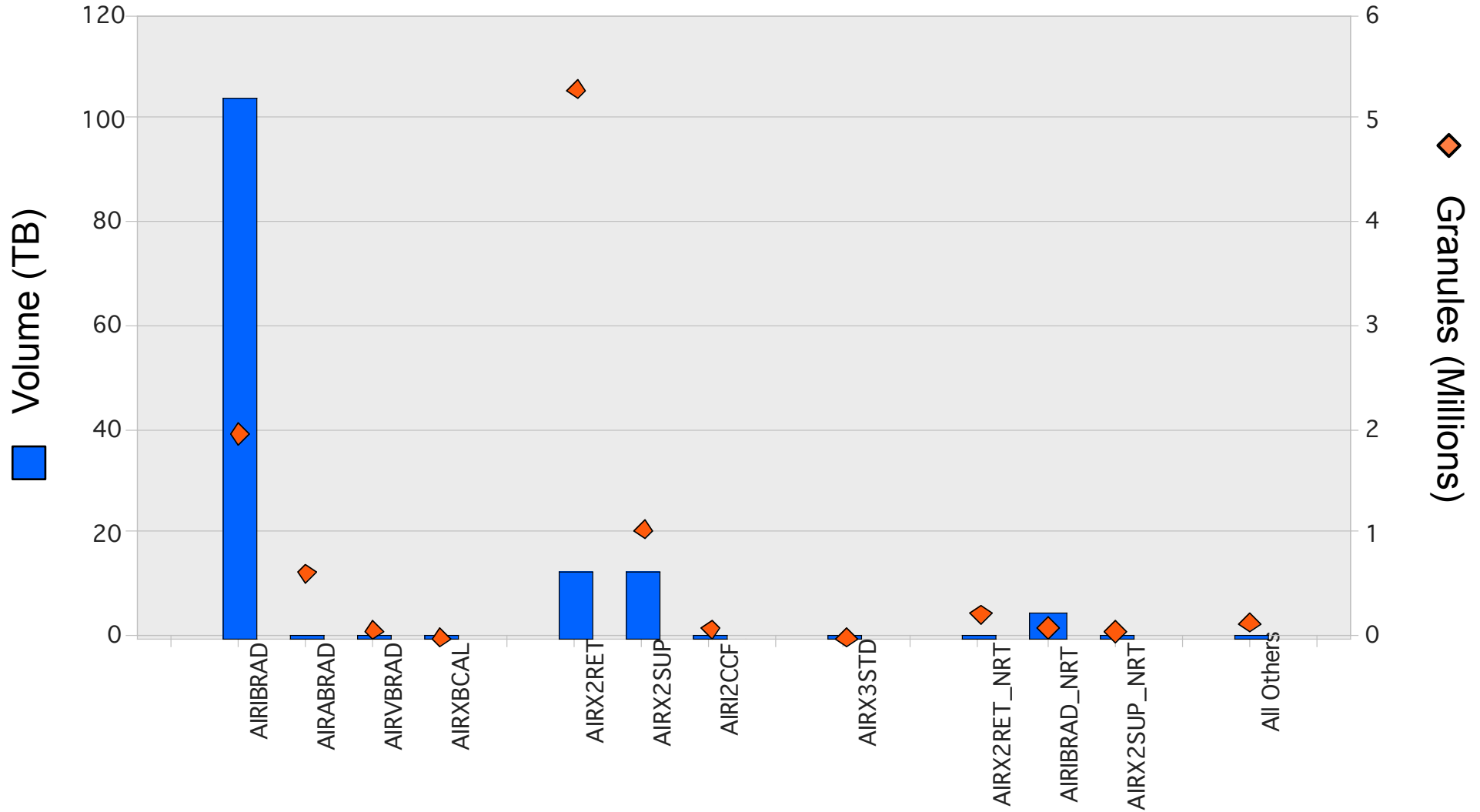
# Data Distribution – Granules







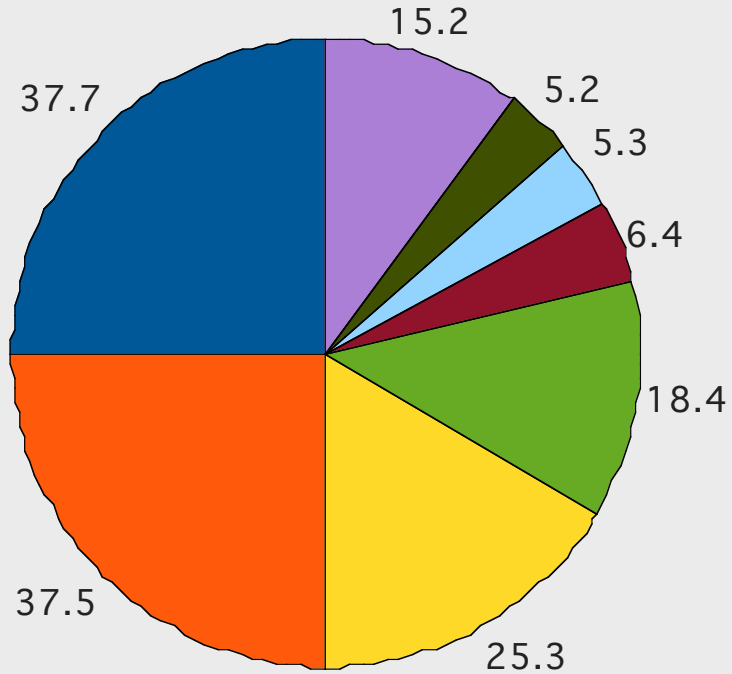
# Data Distribution – by Product



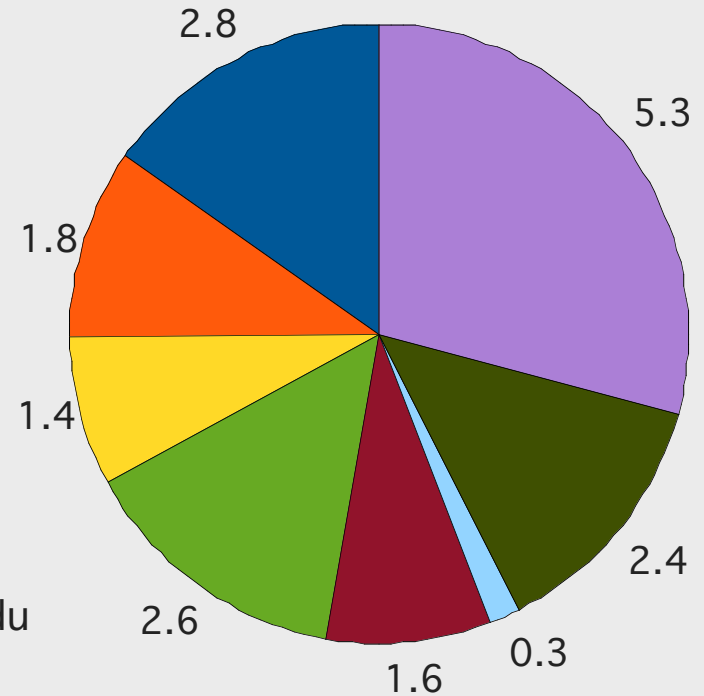


# Data Distribution – by Domain

## Volume (TB)



## Granules (Millions)



- noaa.gov
- umbc.edu
- wisc.edu
- nasa.gov
- princeton.edu
- umich.edu
- ac.jp
- all others



# Services Overview

---

- Data portals
  - Direct ftp/http
  - Mirador
  - WHOM
  - ECHO
  - OPeNDAP
- Subsetting
  - Channel
  - Parameter
- Format conversion
  - NetCDF for L2, L3
  - L1 soon
- Granule and global browse
- Science support
  - ARCTAS
  - CEOP
  - SO2 Map