

Appendix C1

ESEM/EDS Data for Test #3, Day-30 Fiberglass in High-Flow Zones

Figures

Figure C1-1. ESEM image magnified 100 times for a Test #3, Day-30 exterior high-flow fiberglass sample. (T3HiFX31).....	C1-4
Figure C1-2. ESEM image magnified 1000 times for a Test #3, Day-30 exterior high-flow fiberglass sample. (t3hifx32).....	C1-4
Figure C1-3. ESEM image magnified 100 times for a Test #3, Day-30 exterior high-flow fiberglass sample. (t3hifx33).....	C1-5
Figure C1-4. EDS counting spectrum for the large masses of particulate deposits shown in Figure C1-3. (t3hifx34).....	C1-5
Figure C1-5. ESEM image magnified 600 times for a Test #3, Day-30 exterior high-flow fiberglass sample. (t3hifx35).....	C1-6
Figure C1-6. ESEM image magnified 100 times for a Test #3, Day-30 interior high-flow fiberglass sample. (T3HiFI36).....	C1-6
Figure C1-7. ESEM image magnified 1000 times for a Test #3, Day-30 interior high-flow fiberglass sample. (t3hifi37).....	C1-7
Figure C1-8. ESEM image magnified 100 times for a Test #3, Day-30 interior high-flow fiberglass sample. (t3hifi38).....	C1-7

This page intentionally left blank.

For ICET tests, the debris accumulated on the fiberglass is of great concern because it may cause significant head loss for the recirculation of the coolant during LOCAs. To evaluate these potential debris accumulations, fiberglass samples submerged in high-flow zones in the test tank were examined by ESEM/EDS.

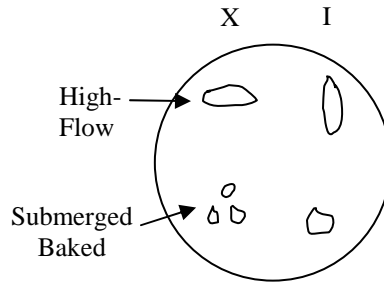
The fiberglass samples examined in this appendix were extracted on the shutdown date of Test #3 (May 5, 2005). Both exterior and interior locations of the fiberglass samples were examined. Environmental SEM (ESEM) was employed to analyze the wet fiberglass samples under low-vacuum conditions (i.e., 80 Pa) and without any carbon coating, to minimize the possible modification of the fiberglass through the drying process. EDS results provide a semi-quantitative elemental analysis of the debris attached on fiberglass. Available logbook entries for this laboratory session are included in this appendix as transcribed notes.

This page intentionally left blank.

Transcribed Laboratory Log

Laboratory session from May 11, 2005.

Test #3, Day-30 High-Flow Fiberglass.



High-Flow Exterior

Image: T3HiFX31	100 ×	ESEM image	Figure C1-1
t3hifX32	1000 ×	ESEM image higher magnification	Figure C1-2
t3hifX33	100 ×	ESEM image	Figure C1-3
EDS: t3hifX34		EDS on particles in T3HiFX33	Figure C1-4
Image: t3hifX35	600 ×	ESEM image on fiberglass	Figure C1-5

High-Flow Interior

Image: T3HiFI36	100 ×	ESEM image of fiberglass	Figure C1-6
t3hifI37	1000 ×	ESEM image higher magnification	Figure C1-7
t3hifI38	100 ×	ESEM image	Figure C1-8



Figure C1-1. ESEM image magnified 100 times for a Test #3, Day-30 exterior high-flow fiberglass sample. (T3HiFX31)

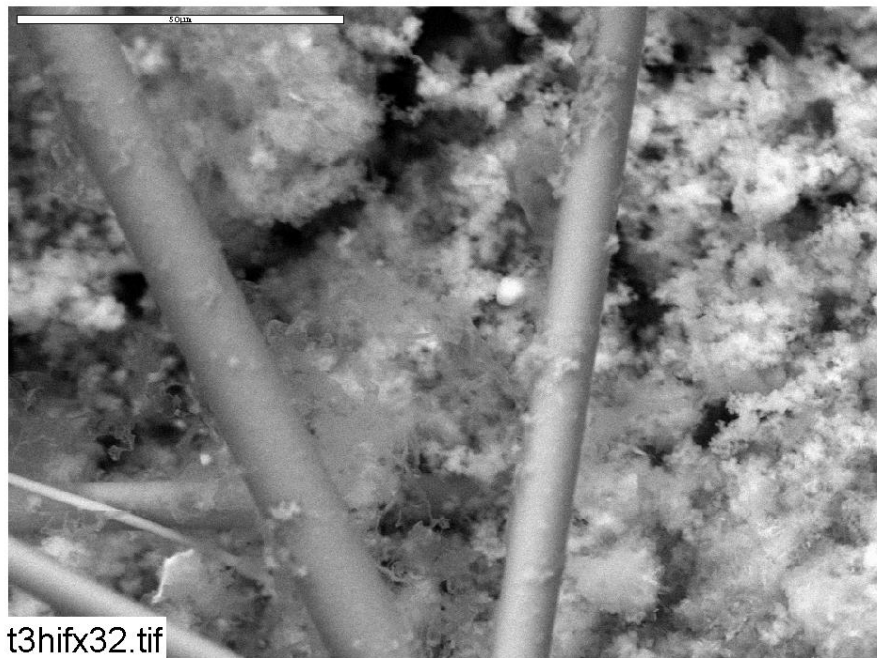


Figure C1-2. ESEM image magnified 1000 times for a Test #3, Day-30 exterior high-flow fiberglass sample. (t3hifx32)



Figure C1-3. ESEM image magnified 100 times for a Test #3, Day-30 exterior high-flow fiberglass sample. (t3hifx33)

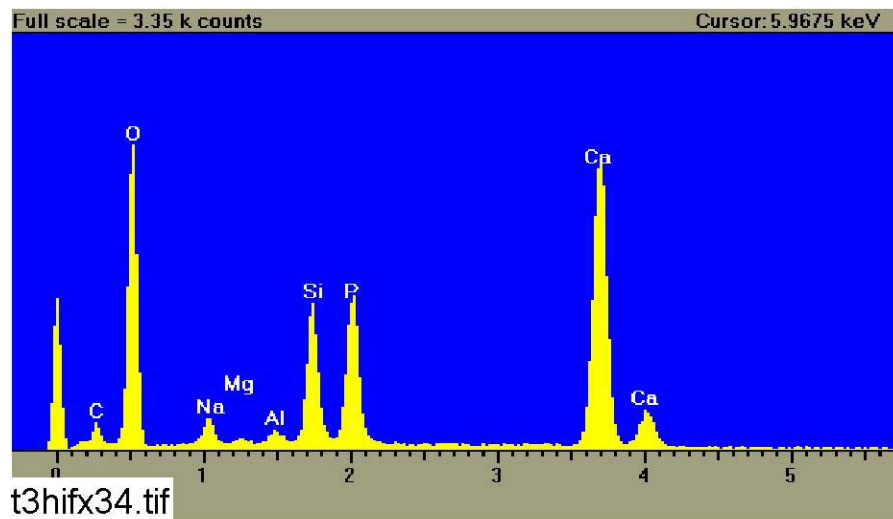


Figure C1-4. EDS counting spectrum for the large masses of particulate deposits shown in Figure C1-3. (t3hifx34)



Figure C1-5. ESEM image magnified 600 times for a Test #3, Day-30 exterior high-flow fiberglass sample. (t3hifx35)

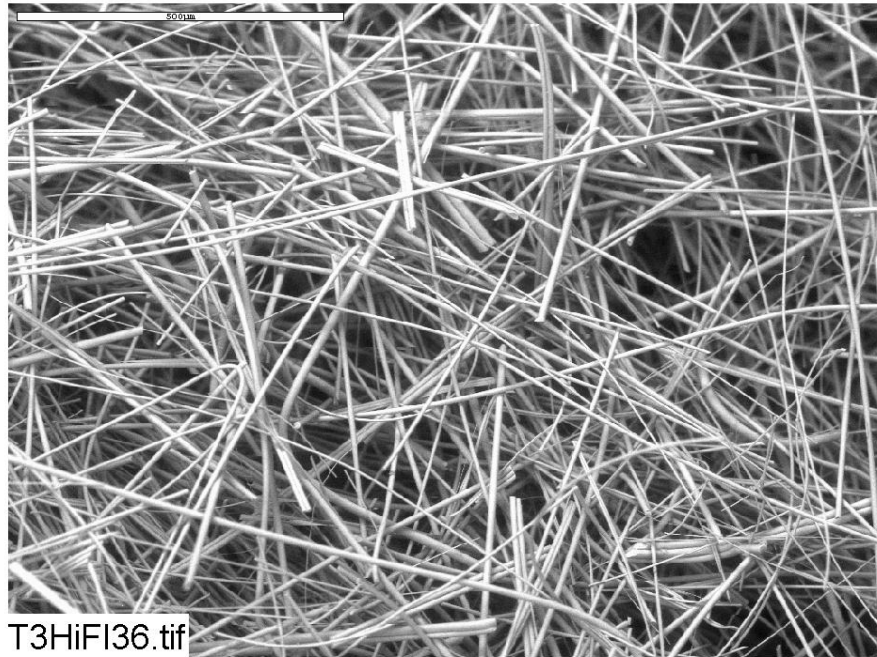


Figure C1-6. ESEM image magnified 100 times for a Test #3, Day-30 interior high-flow fiberglass sample. (T3HiFI36)

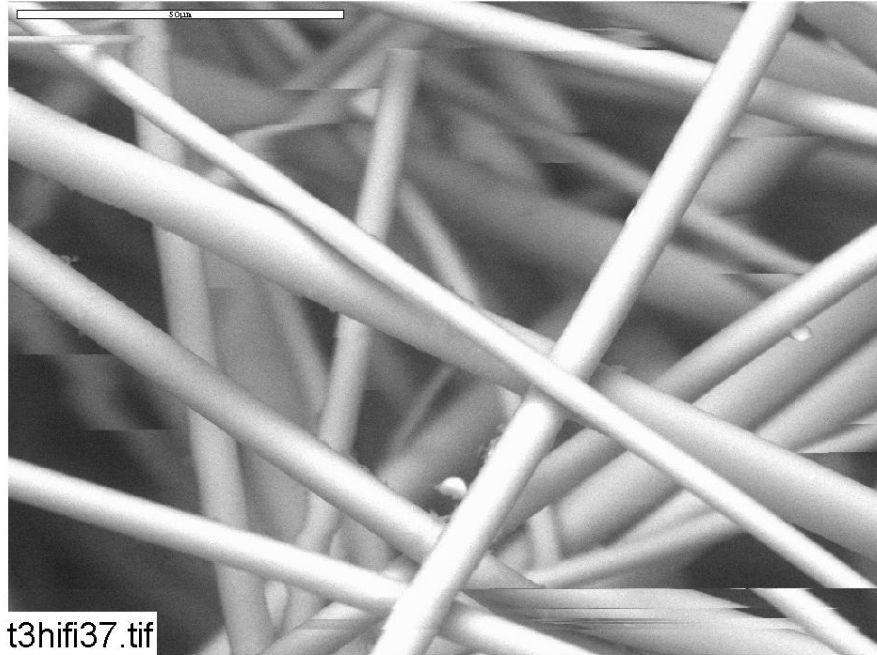


Figure C1-7. ESEM image magnified 1000 times for a Test #3, Day-30 interior high-flow fiberglass sample. (t3hifi37)

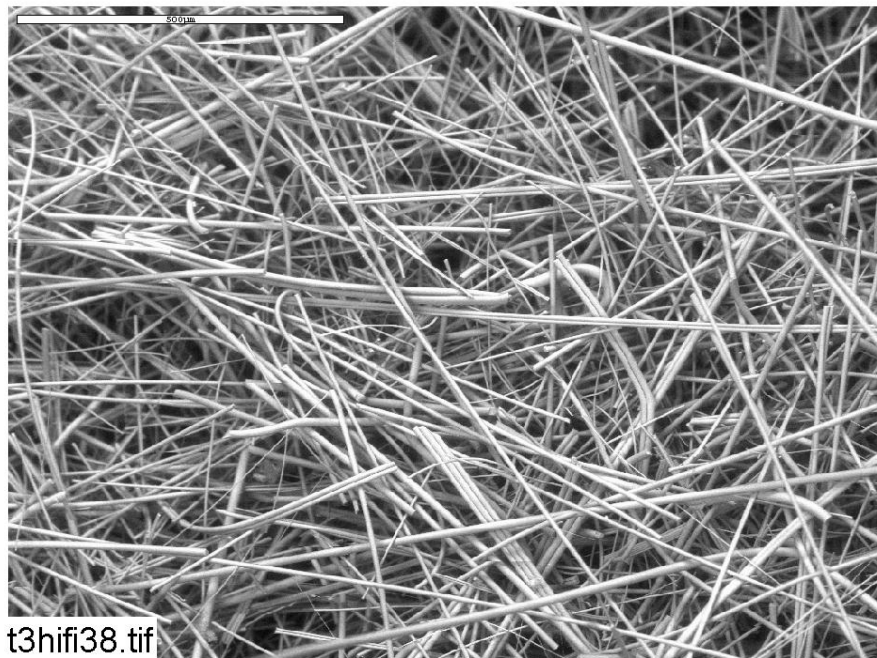


Figure C1-8. ESEM image magnified 100 times for a Test #3, Day-30 interior high-flow fiberglass sample. (t3hifi38)

This page intentionally left blank.

Appendix C2

ESEM Data for Test #3, Day-30 Fiberglass in Low-Flow Zones

Figures

Figure C2-1. ESEM image magnified 70 times for a Test #3, Day-30 exterior low-flow fiberglass sample. (t3lfex09).....	C2-4
Figure C2-2. ESEM image magnified 1000 times for a Test #3, Day-30 exterior low-flow fiberglass sample. (t3lfex10)	C2-4
Figure C2-3. ESEM image magnified 1000 times for a Test #3, Day-30 exterior low-flow fiberglass sample. (t3lfex11)	C2-5
Figure C2-4. ESEM image magnified 70 times for a Test #3, Day-30 interior low-flow fiberglass sample. (t3lfin12)	C2-5
Figure C2-5. ESEM image magnified 1000 times for a Test #3, Day-30 interior low-flow fiberglass sample. (t3lfin13)	C2-6
Figure C2-6. ESEM image magnified 1000 times for a Test #3, Day-30 interior low-flow fiberglass sample. (t3lfin14)	C2-6
Figure C2-7. ESEM image magnified 1000 times for a Test #3, Day-30 interior low-flow fiberglass sample. (t3lfin15)	C2-7

This page intentionally left blank.

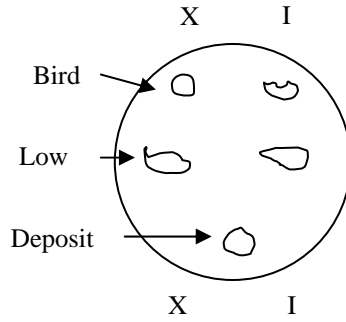
This appendix presents the ESEM results on fiberglass samples submerged in the low-flow zone in the tank. The fiberglass samples were extracted on the date Test #3 was shut down (May 5, 2005). Both exterior and interior locations of the fiberglass samples were examined. ESEM was employed to analyze the uncoated, wet fiberglass samples. Additionally, the ESEM was performed under a low vacuum condition (i.e., 80 Pa) to minimize the modification of the fiberglass that could occur through the drying process. Available logbook entries for this laboratory session are included in this appendix as transcribed notes.

This page intentionally left blank.

Transcribed Laboratory Log

Laboratory session from May 6, 2005.

Test #3, Day-30 Birdcage Fiberglass.



Low-Flow Exterior

Image: t3lfex09	70 ×	ESEM image of fiberglass sample	Figure C2-1
t3lfex10	1000 ×	ESEM at higher magnification	Figure C2-2
t3lfex11	1000 ×	ESEM image	Figure C2-3

Low-Flow Interior

Image: t3lfin12	70 ×	ESEM image of fiberglass sample	Figure C2-4
t3lfin13	1000 ×	ESEM image at higher mag.	Figure C2-5
t3lfin14	1000 ×	ESEM image	Figure C2-6
t3lfin15	1000 ×	ESEM image	Figure C2-7

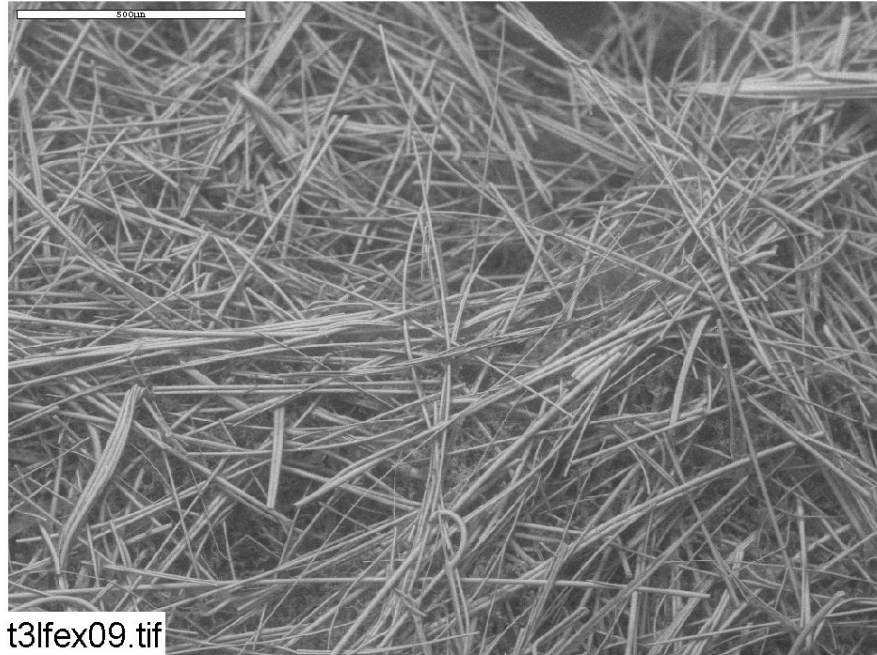


Figure C2-1. ESEM image magnified 70 times for a Test #3, Day-30 exterior low-flow fiberglass sample. (t3lfex09)

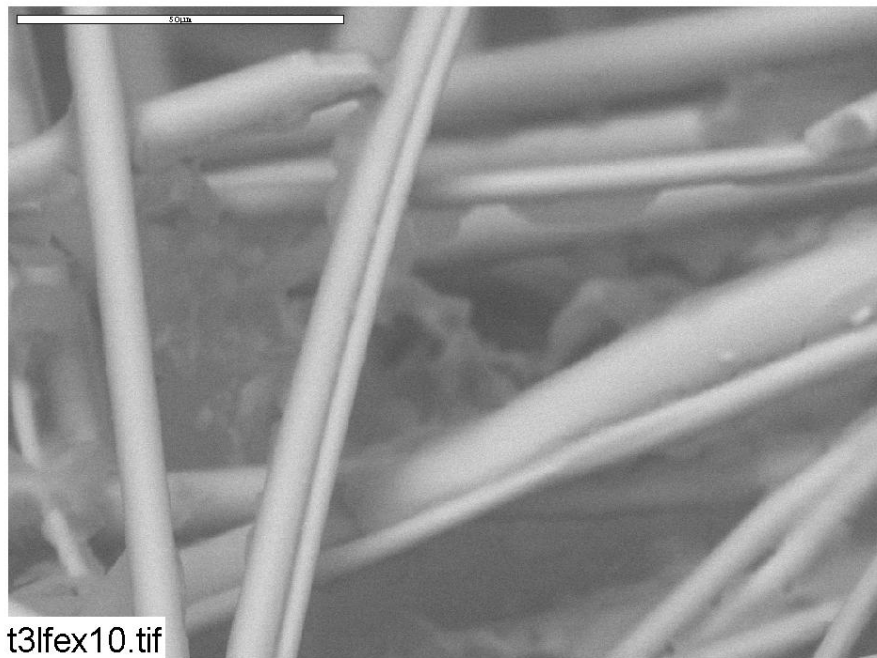


Figure C2-2. ESEM image magnified 1000 times for a Test #3, Day-30 exterior low-flow fiberglass sample. (t3lfex10)

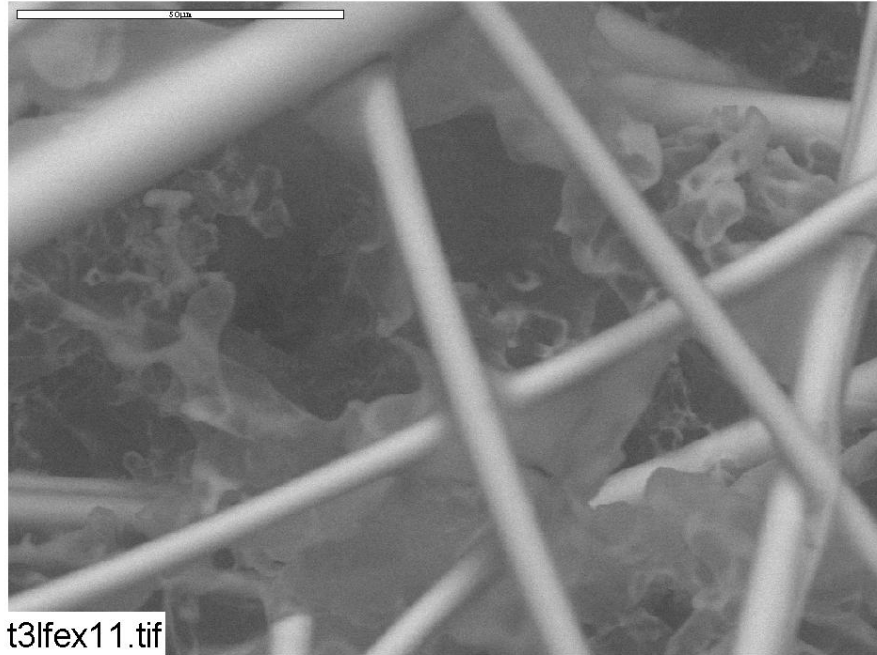


Figure C2-3. ESEM image magnified 1000 times for a Test #3, Day-30 exterior low-flow fiberglass sample. (t3lfex11)

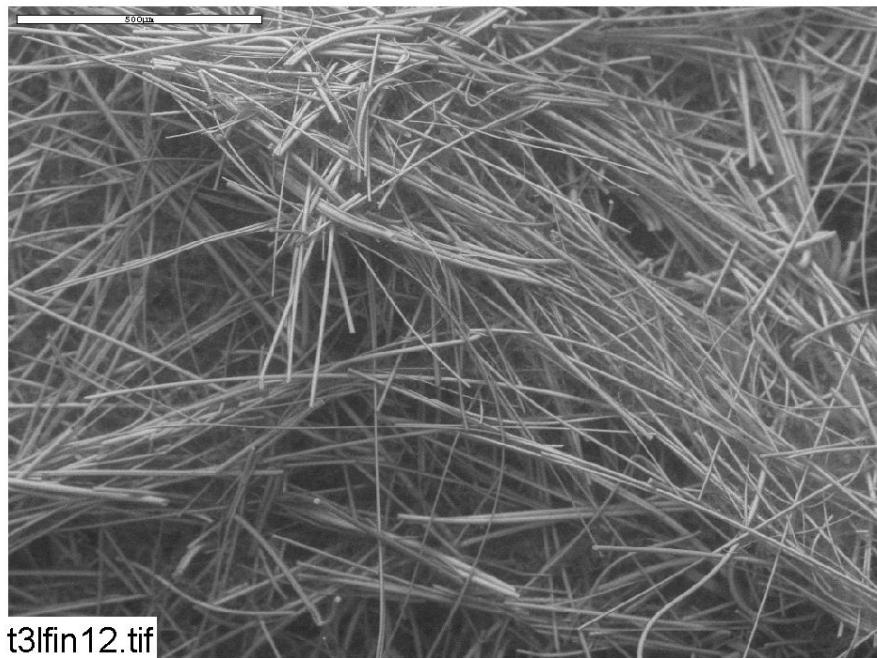


Figure C2-4. ESEM image magnified 70 times for a Test #3, Day-30 interior low-flow fiberglass sample. (t3lfin12)

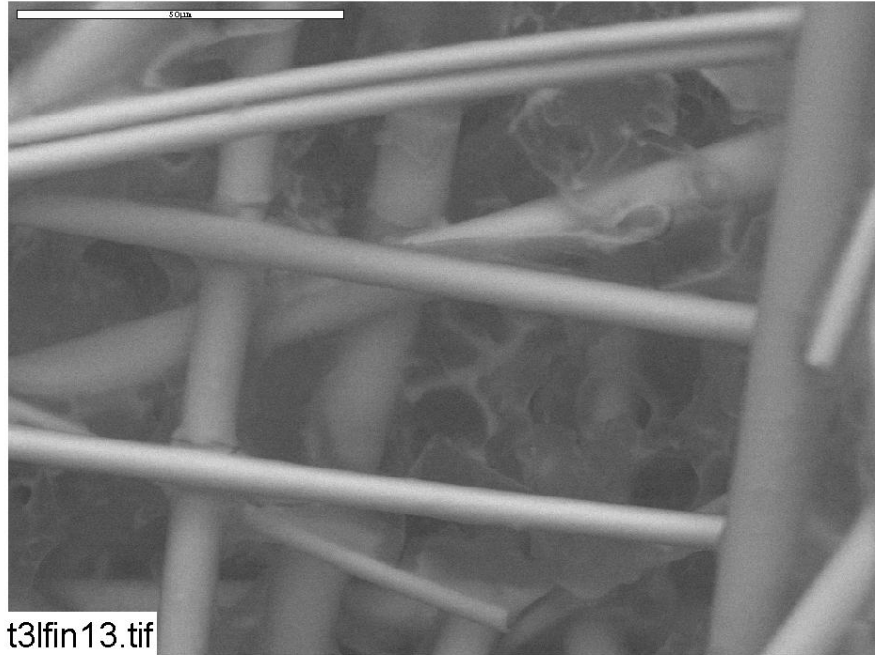


Figure C2-5. ESEM image magnified 1000 times for a Test #3, Day-30 interior low-flow fiberglass sample. (t3lfin13)

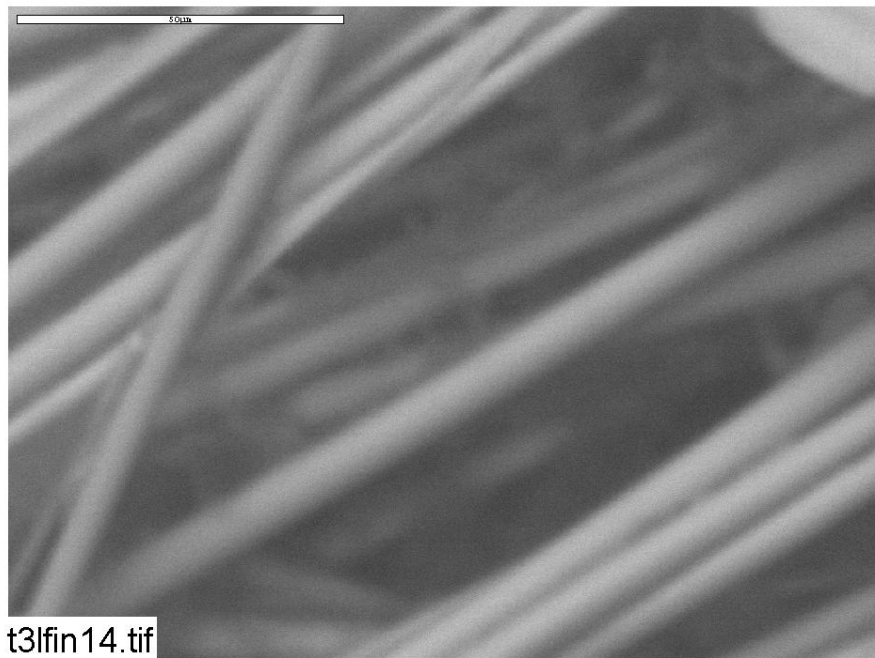


Figure C2-6. ESEM image magnified 1000 times for a Test #3, Day-30 interior low-flow fiberglass sample. (t3lfin14)

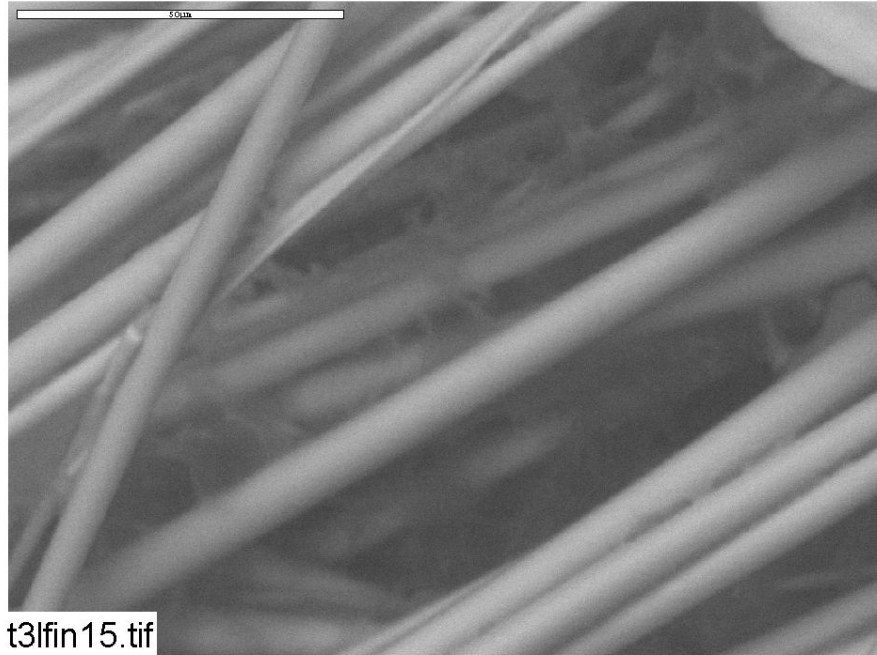


Figure C2-7. ESEM image magnified 1000 times for a Test #3, Day-30 interior low-flow fiberglass sample. (t3lfin15)

This page intentionally left blank.