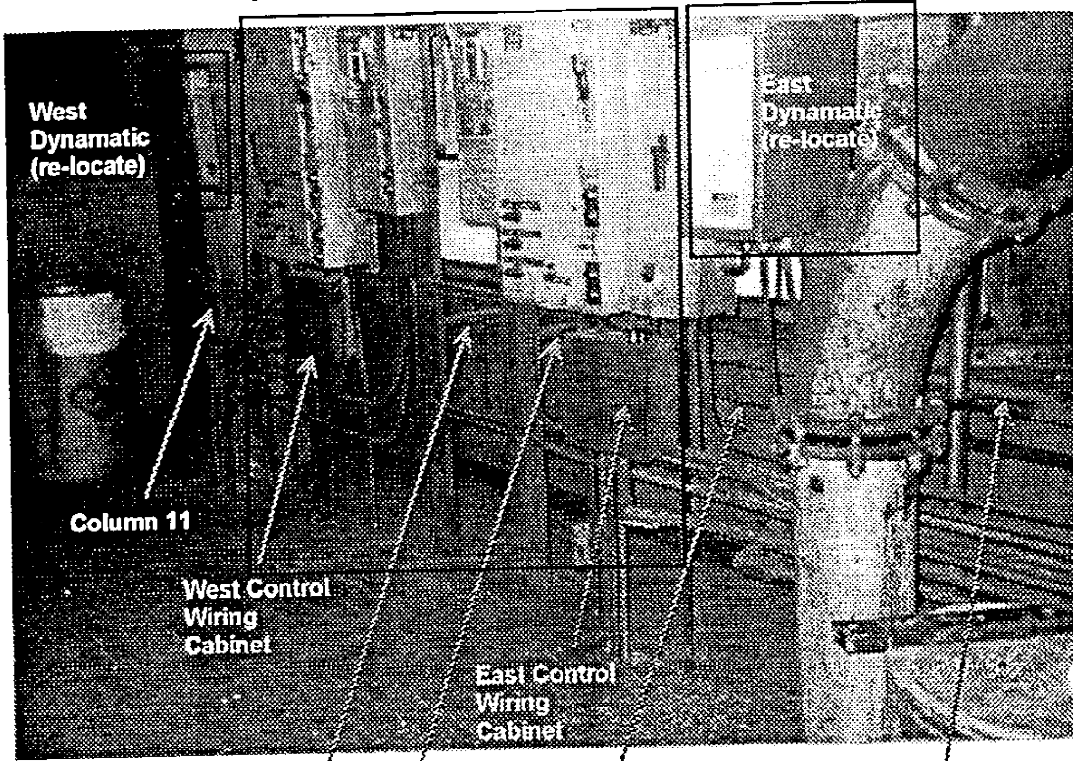


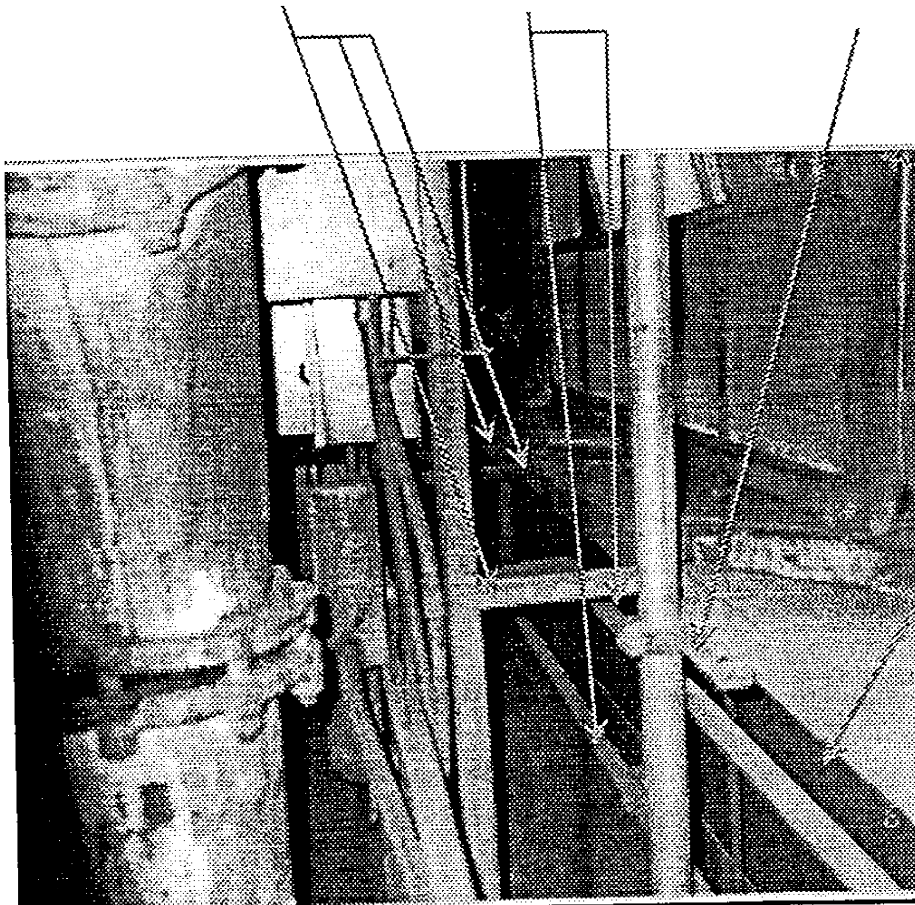
Starting Equipment and conduit:  
 Temporarily support when girt removed.  
 Demolish after new starters installed.



Remove Braces from  
 Girt Steel

1-1/4" Conduit from  
 Control Wiring Cabinets

Remove Braces from  
 Girt Steel



Relocate  
 instrument tubing  
 line on upper girt

Remove Paging cable  
 from beneath girt.  
 Relocate paging  
 equipment

**SKETCH W02-1**  
 Apron Feeder Level  
 El. 244'-8 1.4"  
 8/16/96  
 Designer:

Remove Braces from  
Girt Steel and install  
temp. support to floor

Remove Braces from  
Girt Steel and install  
temp. support to floor



Remove Braces from  
Girt Steel

Piping to be relocated

Temporarily re-support  
Conduit run to floor  
Conduit to be relocated

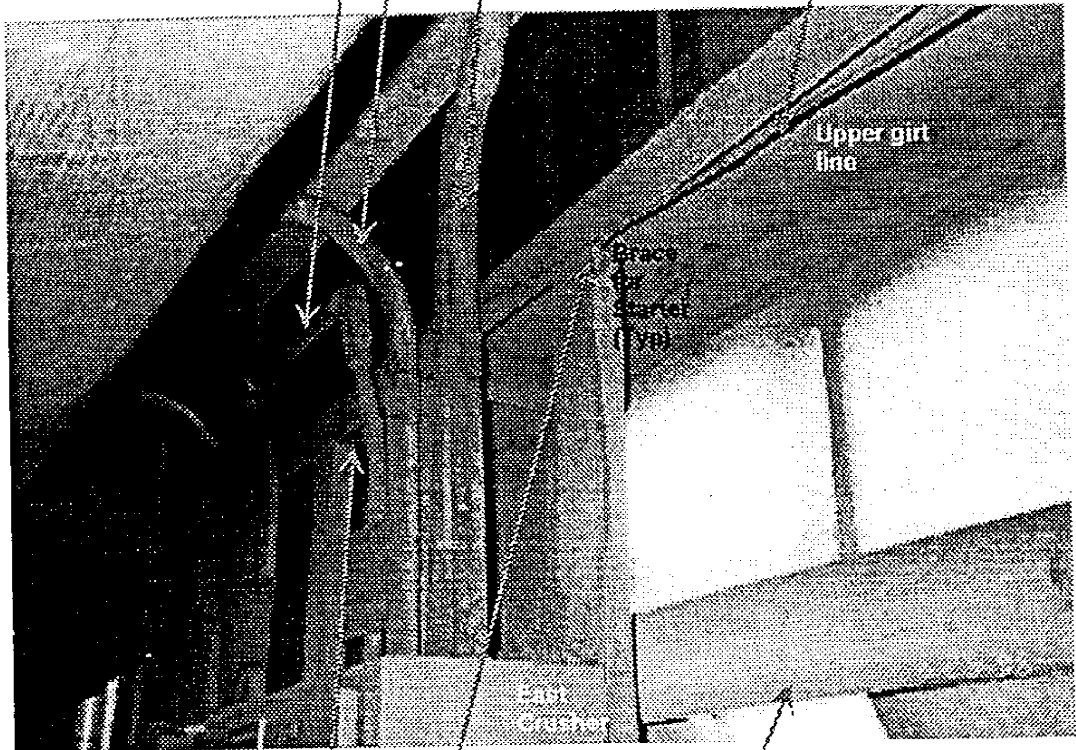
**SKETCH W02-2**

Apron Feeder Level  
Upper Girt-El. 234'-6"  
8/16/96

Designer:

Conduit should not require additional support in order to remove girt line

Relocate paging equipment and cable



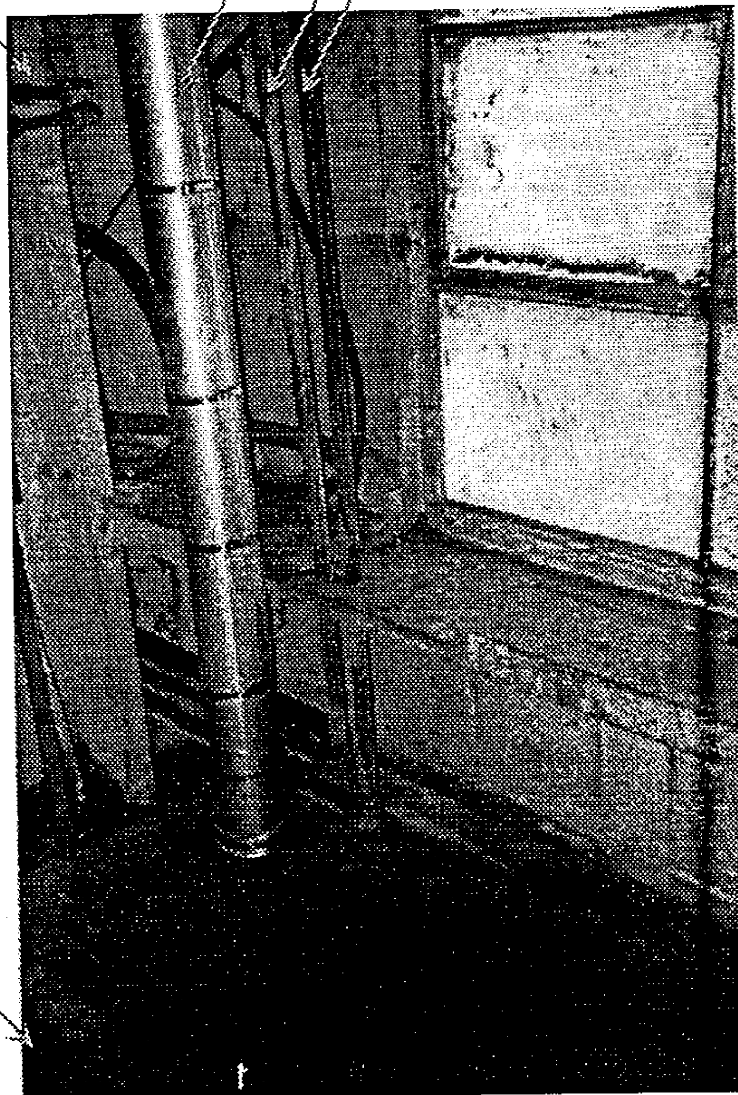
Remove Braces from Girt Steel and install temp. support to building steel

Piping to be relocated

**SKETCH W02-3**  
Apron Feeder Level  
El. 234'-6"-Lower Girt  
8/16/96  
Designer:

RELOCATE 1" AND 1-1/2" HEADERS BOTH  
VERTICAL AND HORIZONTAL FOR ACCESS  
FROM BOILER ROOM TO NEW MICROMILL  
ROOM (BETWEEN COLS A-11 THROUGH A-12)

COLUMN A-12



FLOOR EL 234'-6"

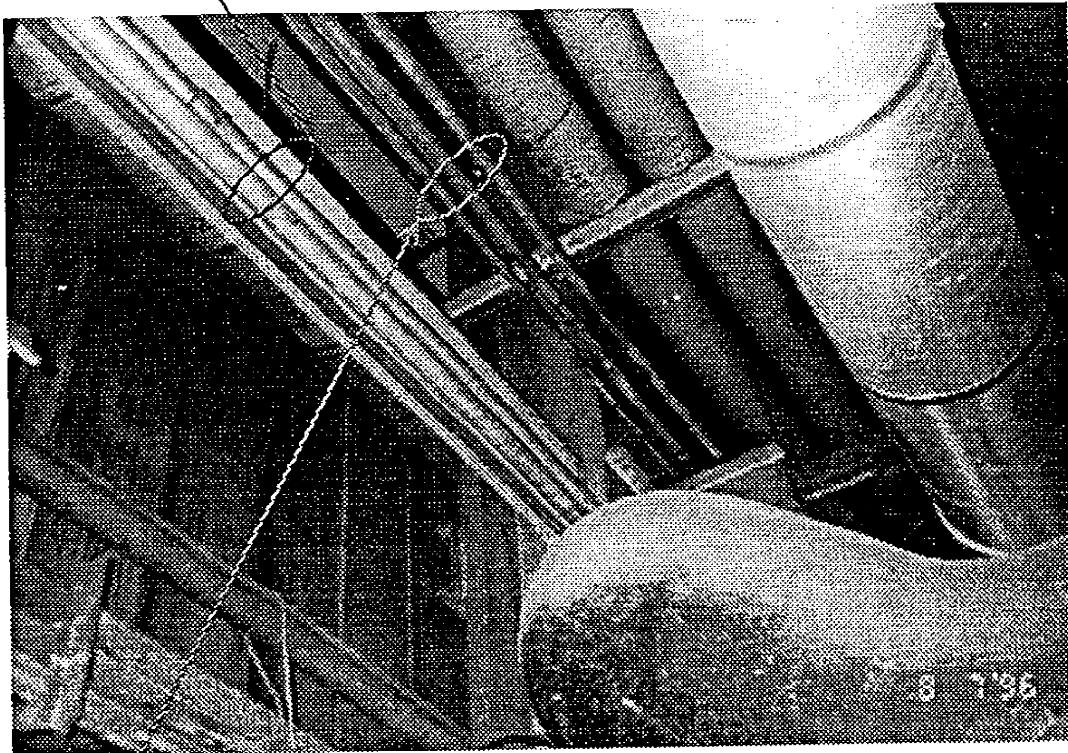
**SKETCH W02-4**

Column A-12  
View Looking Northwest  
8/16/96

Designer:



- 3 VERTICAL CONDUITS, COL. A, EL. 244'-8", TOP TO BOTTOM  
1-1/4" - TO FLYASH CONTROL PANEL EAST OF EXISTING CONTROL ROOM (SKETCH W02-8)  
1-1/4" - TO 16 BOILER FLYASH JIC BOX ON EL. 234'-6" BETWEEN WINDOWS (SKETCH W02-9)  
3/4" - TO FLYASH CONTROL PANEL ON EL 234'-6" ON COL. A-10 (SKETCH W02-8)



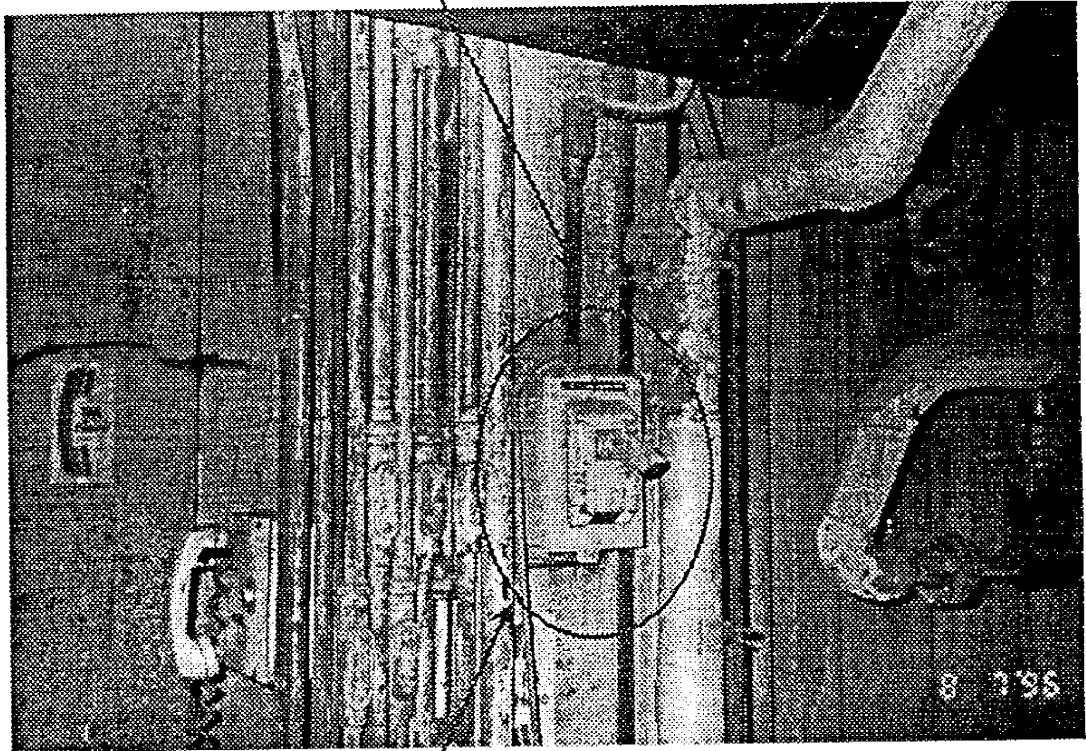
- 3 HORIZONTAL CONDUITS, COL. A, EL. 244'-8", NORTH TO SOUTH  
3/4" - FROM DISTRIBUTION PANEL CF TO DISC SWITCH FOR 16 FLYASH WATER PUMP (SKETCH W02-6)  
1" - FROM DISTRIBUTION PANEL CF TO JB ABOVE HAND RAIL LEADING TO BUILDING 46 PIPE BRIDGE (SKETCH W02-7)  
3/4" - FROM DISTRIBUTION PANEL DF TO JB ABOVE HAND RAIL LEADING TO BUILDING 46 PIPE BRIDGE (SKETCH W02-7)

**SKETCH W02-5**

Column A  
El. 244'-8" - Conduits  
8/16/96

Designer: \_\_\_\_\_

CONDUIT

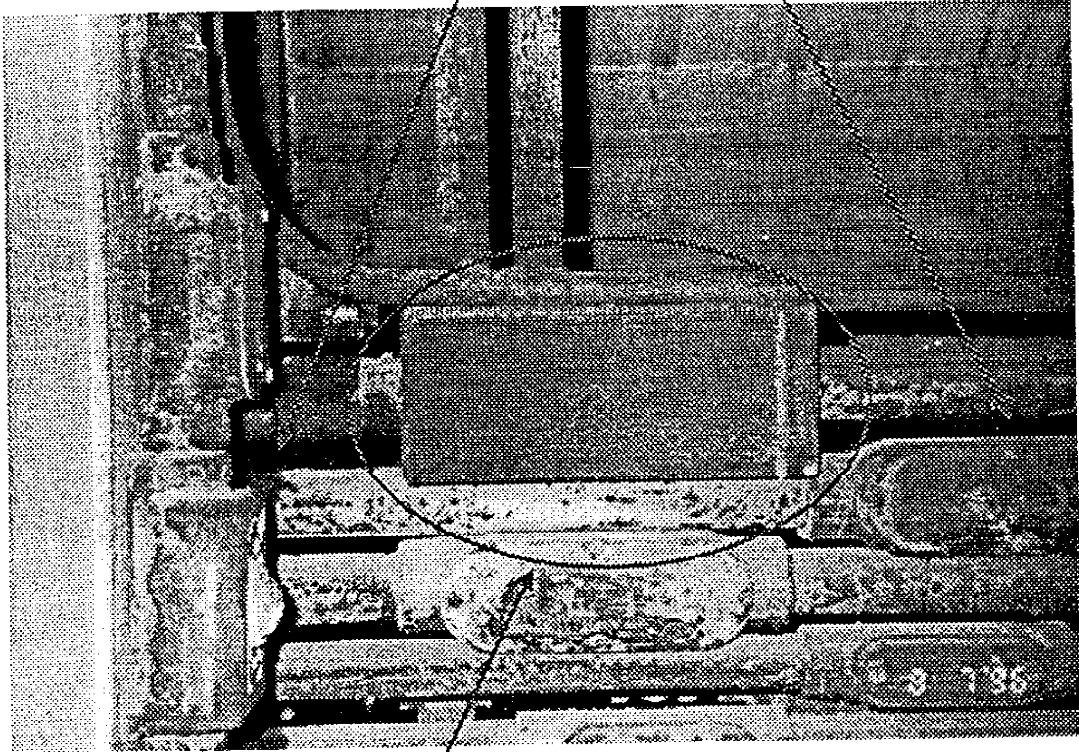


DISC. SWITCH FOR FLYASH WATER  
PUMP #16 AT COL. A-10  
EL. 244'-8"

**SKETCH W02-6**  
Fly Ash Disconnect  
Switch  
8/16/96

Designer: \_\_\_\_\_

CONDUIT



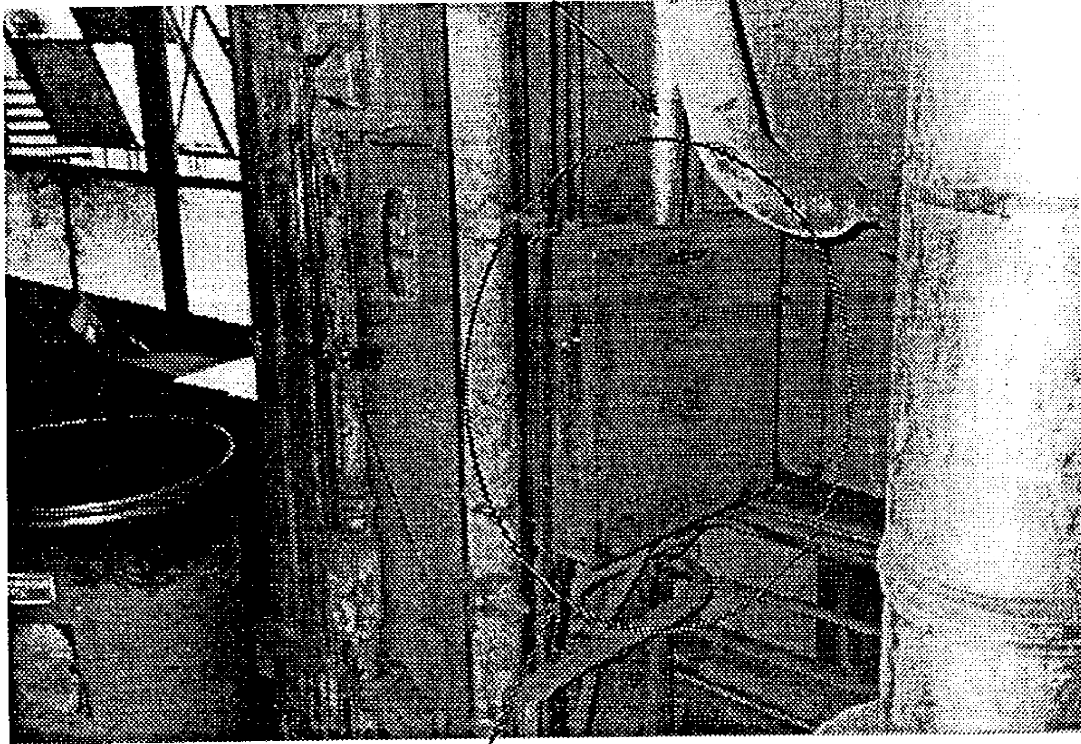
JUNCTION BOX ABOVE HANDRAIL  
LEADING TO PIPE BRIDGE  
FOR BUILDING #46

**SKETCH W02-7**

Junction Box  
Above Hand Rail  
8/16/96

Designer:

CONDUIT



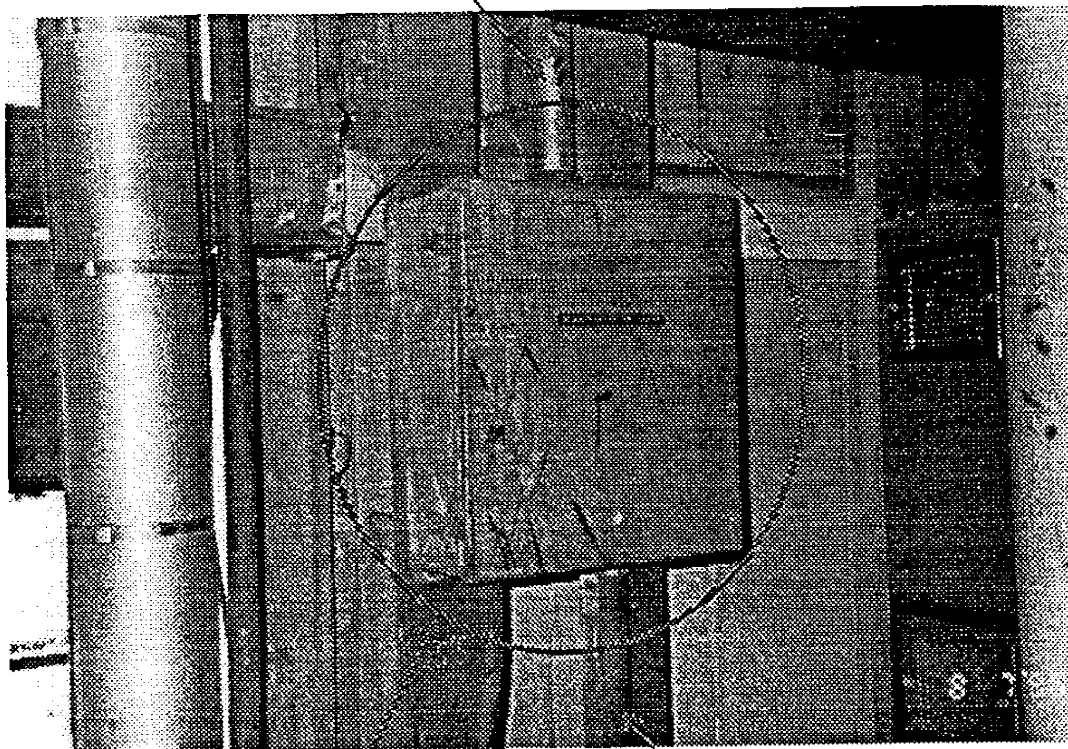
FLY ASH CONTROL PANEL  
COLUMN A-10, EL. 244'-8"

**SKETCH W02-8**

Fly Ash Control  
Panel  
8/16/96

Designer:

CONDUIT



CONDUIT

FLY ASH CONTROL PANEL  
COLUMN A-10, EL. 244'-8"

**SKETCH W02-9**

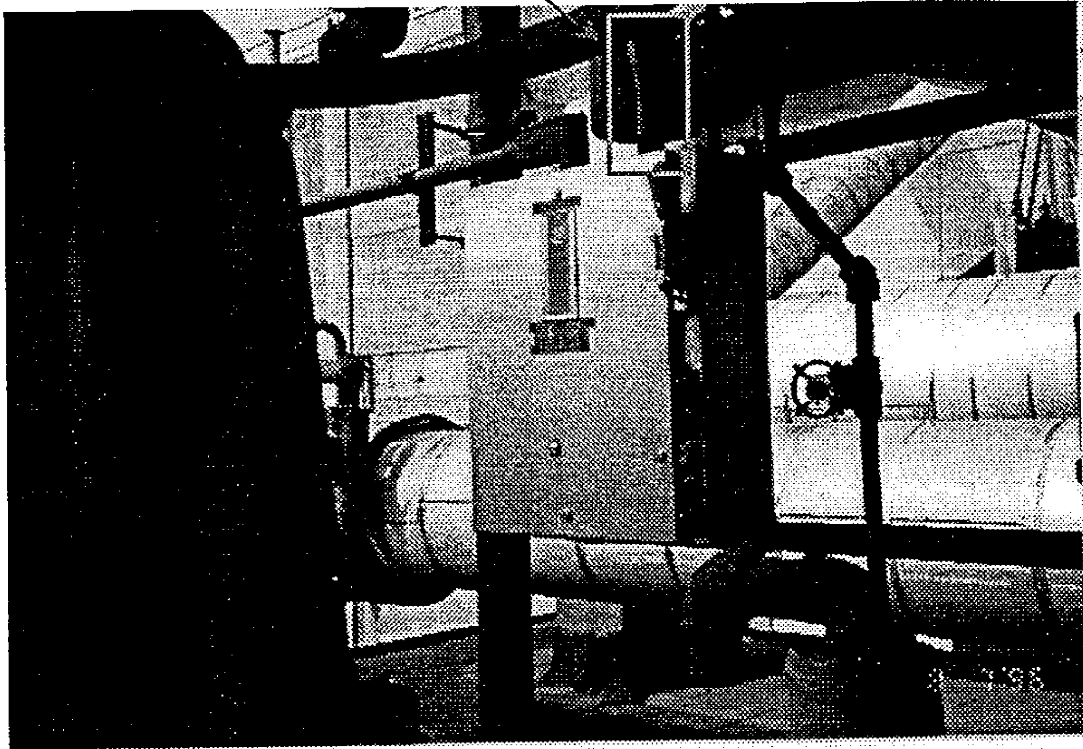
Fly Ash Junction

Box

8/16/96

Designer:

1" CONDUIT FOR STARTER  
FOR STEAM VALVE 260-060-E  
OF SOUTHEAST ROOF DOOR OF  
STARTER TAGGED "EASTWEST TIE  
LINE 260#-60"



**SKETCH W02-10**

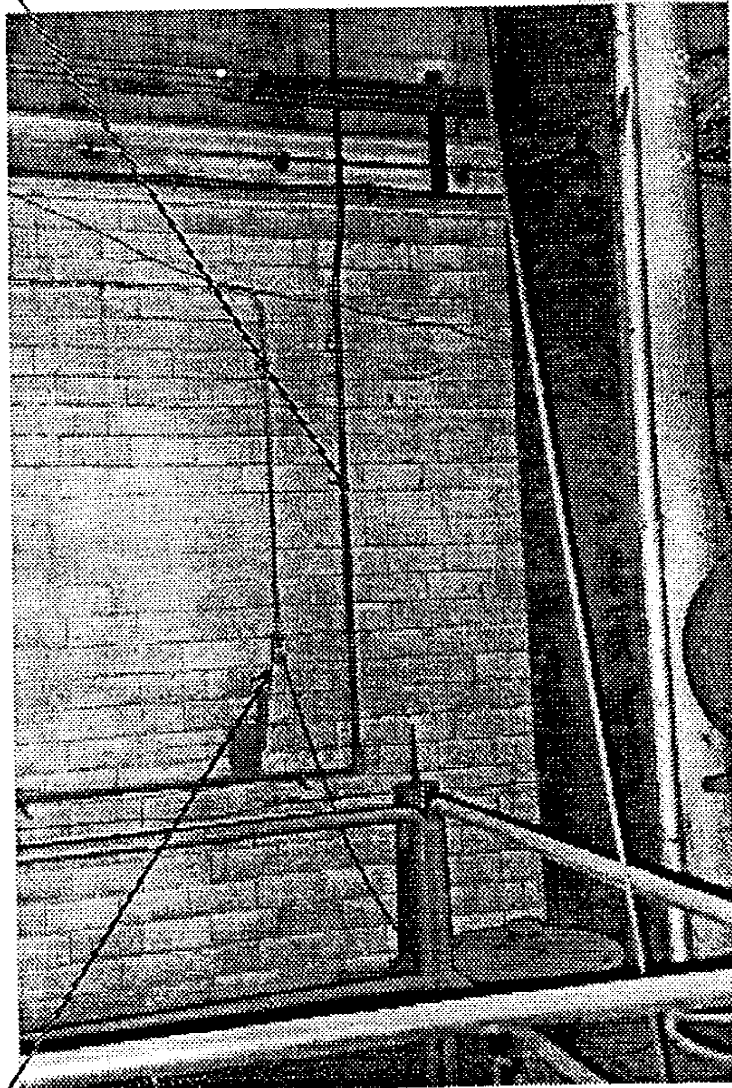
Steam Valve 260-060E

Motor Starter

8/16/96

Designer:

1" CONDUIT, SOUTH WALL OF THE BOILER  
HOUSE, CONTINUES TO SOUTHWEST ROOF FOR  
STEAM VALVE 260-060-E

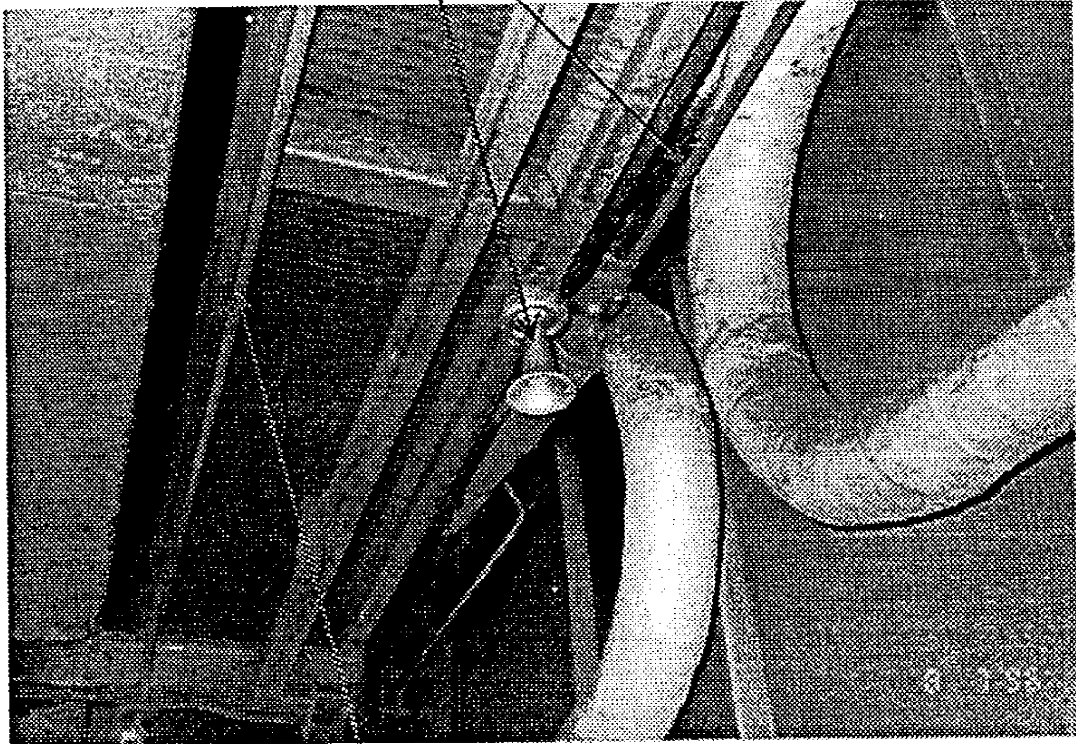


CONVENIENCE RECEPTACLE

**SKETCH W02-11**  
Boiler House South  
Wall and Conv. Recept.  
8/16/96  
Designer:



WARNING HORN AND RELATED  
CONDUIT AT THE REAR OF THE BOILER  
EL. 230'-0"

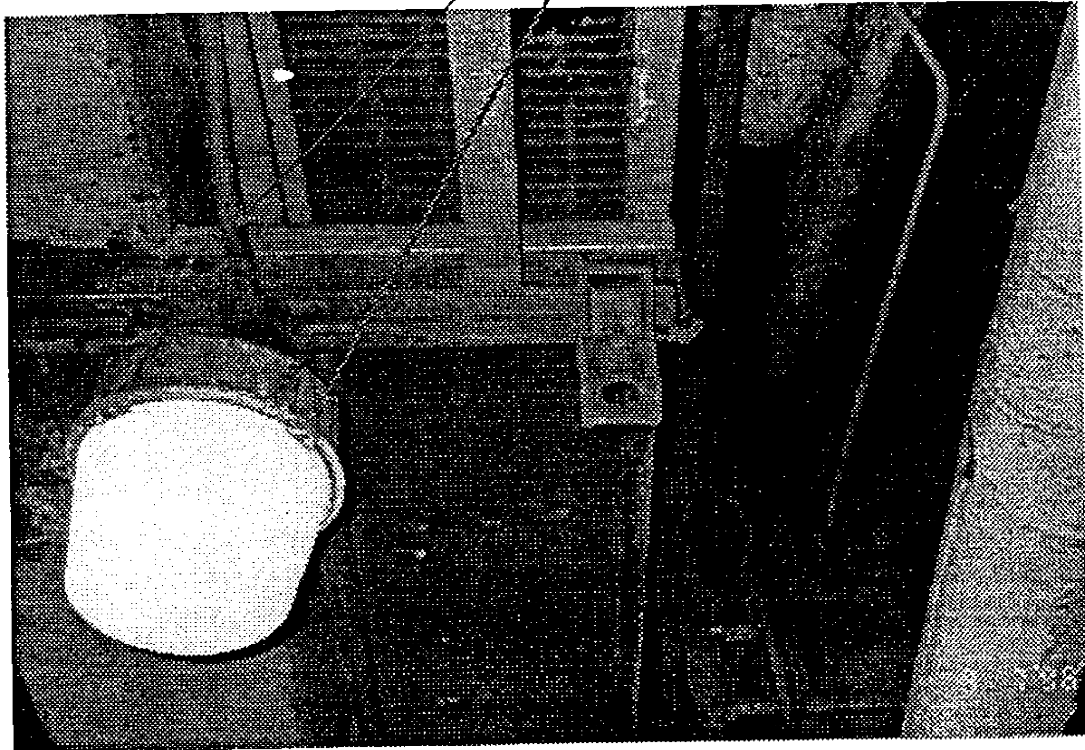


LIGHTING CONDUIT AT THE  
REAR OF THE BOILER  
EL. 230'-0"

**SKETCH W02-12**  
Miscellaneous &  
Lighting No. 1  
8/16/96

Designer:

LIGHTING AND RELATED CONDUIT  
AT THE REAR OF THE BOILER  
EL 230'-0"



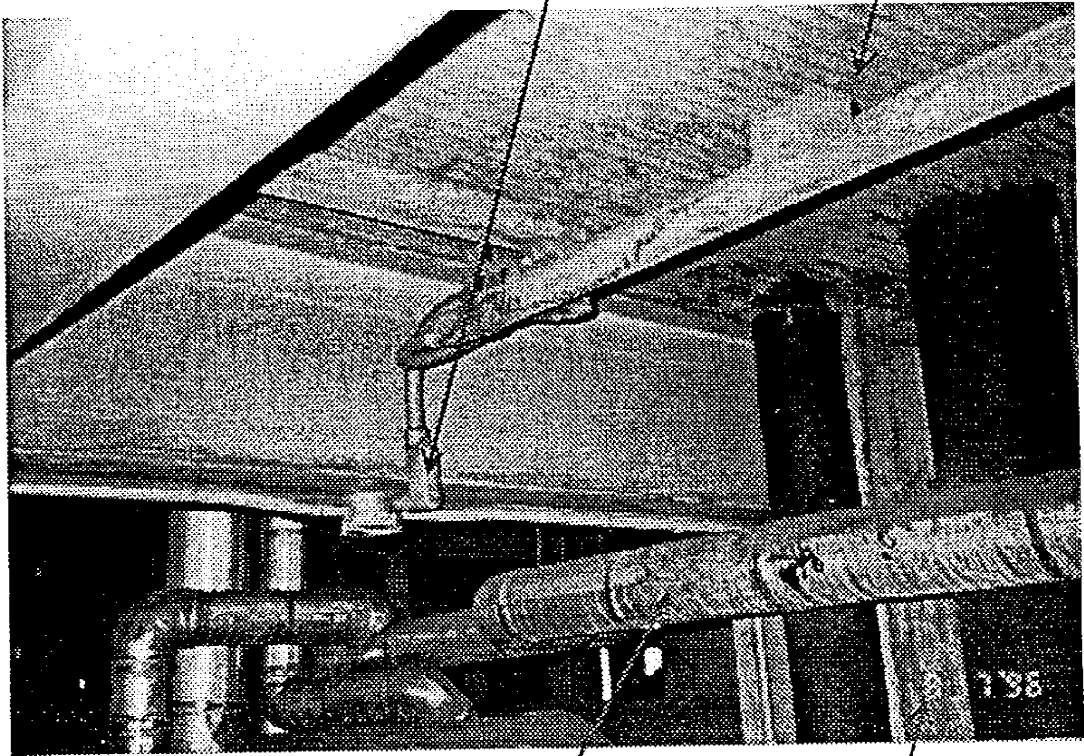
**SKETCH W02-13**  
Miscellaneous &  
Lighting No. 2  
8/16/96

Designer:

LIGHTING AND RELATED CONDUIT  
AT THE REAR OF THE BOILER  
EL 230'-0"

GRATING  
EL. 238'-9"

VIEW LOOKING SOUTHWEST



1-1/2" OR 2" STEAM LINE  
TO BE RELOCATED TO CLEAR  
8" COAL PIPE RISERS  
(REF: PARSONS POWER  
DWG E03115-333-019)

COLUMN D-10

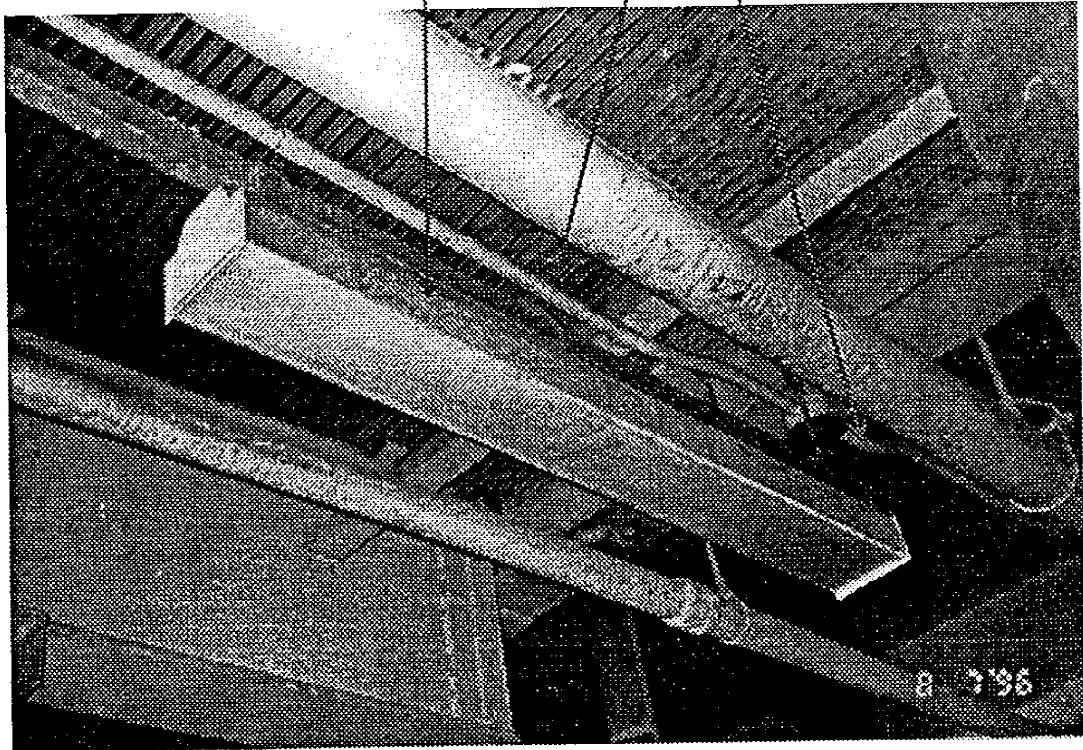
**SKETCH W02-14**

Miscellaneous &  
Lighting No. 3  
8/16/96

Designer:

LIGHTING AT THE REAR  
OF THE BOILER  
EL 238

LIGHTING CONDUIT AT  
THE REAR OF THE BOILER  
EL 238'



VIEW LOOKING SOUTH

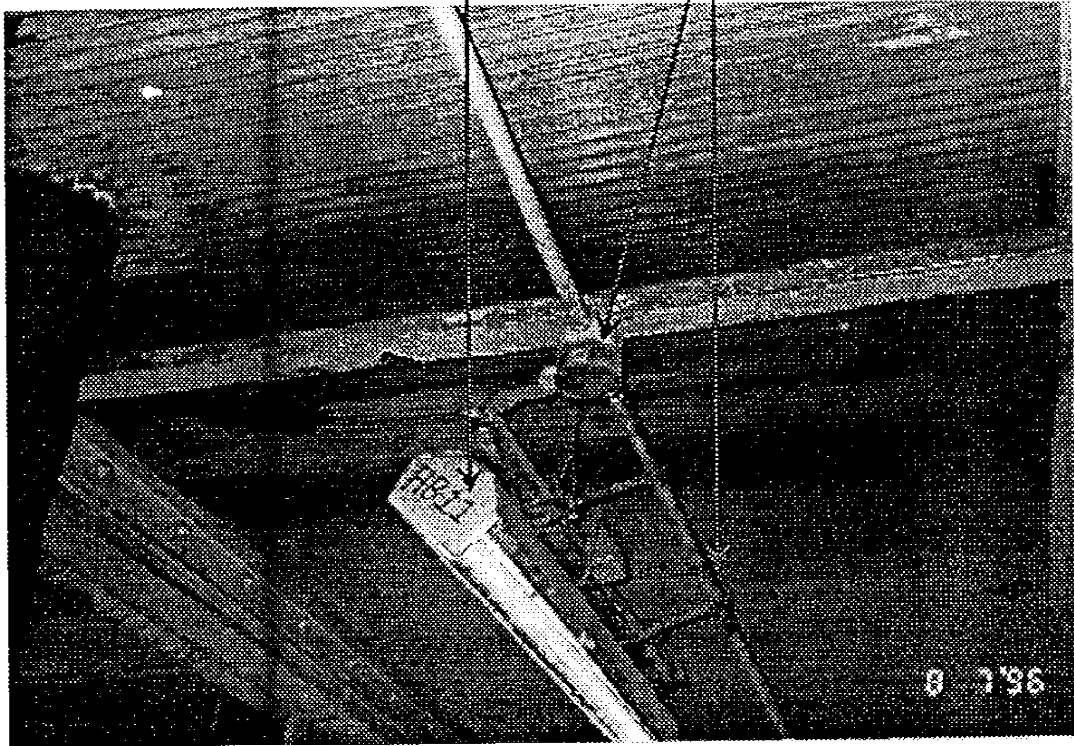
**SKETCH W02-15**

Miscellaneous &  
Lighting No. 4  
8/16/96

Designer:

LIGHITING FIXTURES

LIGHITING CONDUIT



CONDUIT AND LIGHTING  
LOOKING UP FROM EL. 249'-8" TO THE  
UNDERSIDE OF EL. 260'-8" IN THE  
BOILER AREA

**SKETCH W02-16**

Miscellaneous &

Lighting No. 5

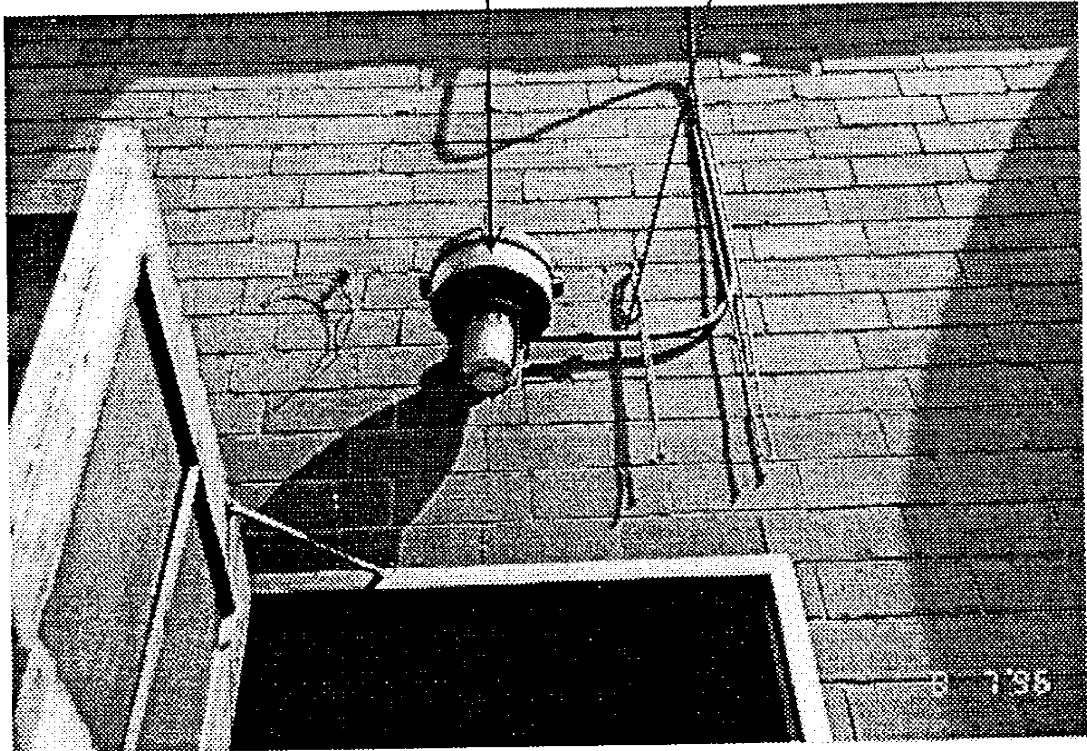
8/16/96

Designer:

LIGHTING FIXTURES

LIGHTING CONDUIT

VIEW IS LOOKING NORTH



LIGHTING AND CONDUIT ABOVE OUTSIDE  
OF DOOR LEADING FROM SOUTHWEST  
ROOF TO BOILER HOUSE AT COL. "E", EL 278'-3"

**SKETCH W02-17**

Miscellaneous &  
Lighting No. 6

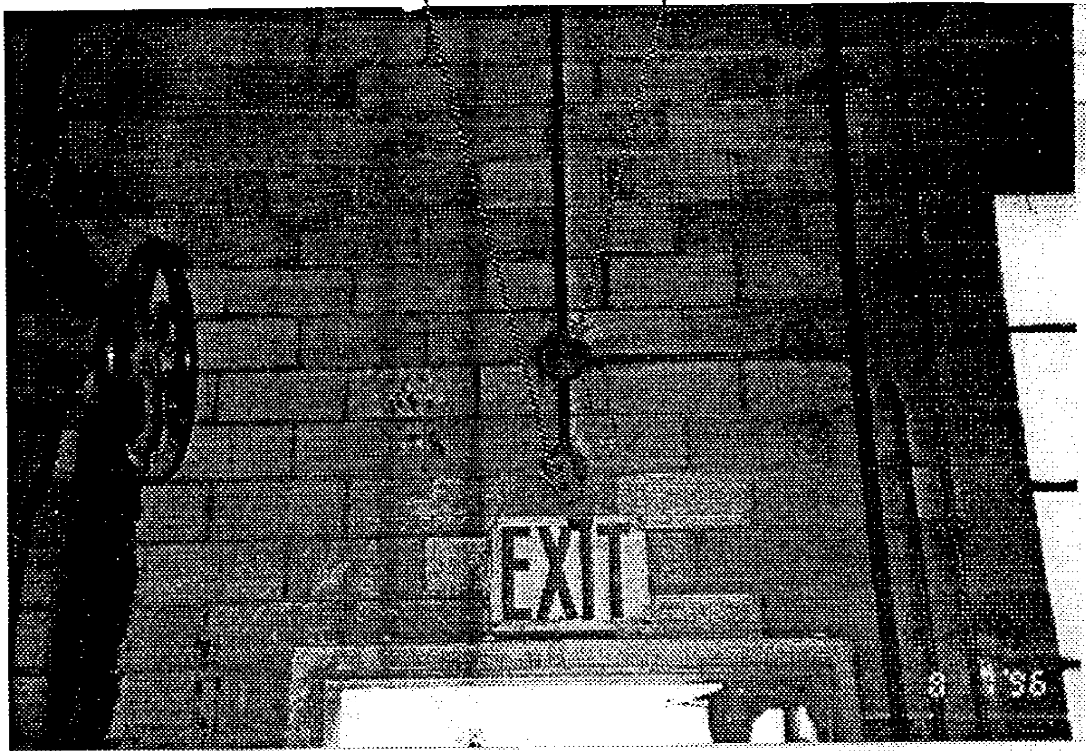
8/16/96

Designer:

LIGHTING FIXTURES

LIGHTING CONDUIT

VIEW IS LOOKING SOUTH



LIGHTING AND CONDUIT ABOVE INSIDE  
OF DOOR LEADING TO SOUTHWEST  
ROOF FROM BOILER HOUSE AT COL. "E", EL 278'-3"

**SKETCH W02-18**

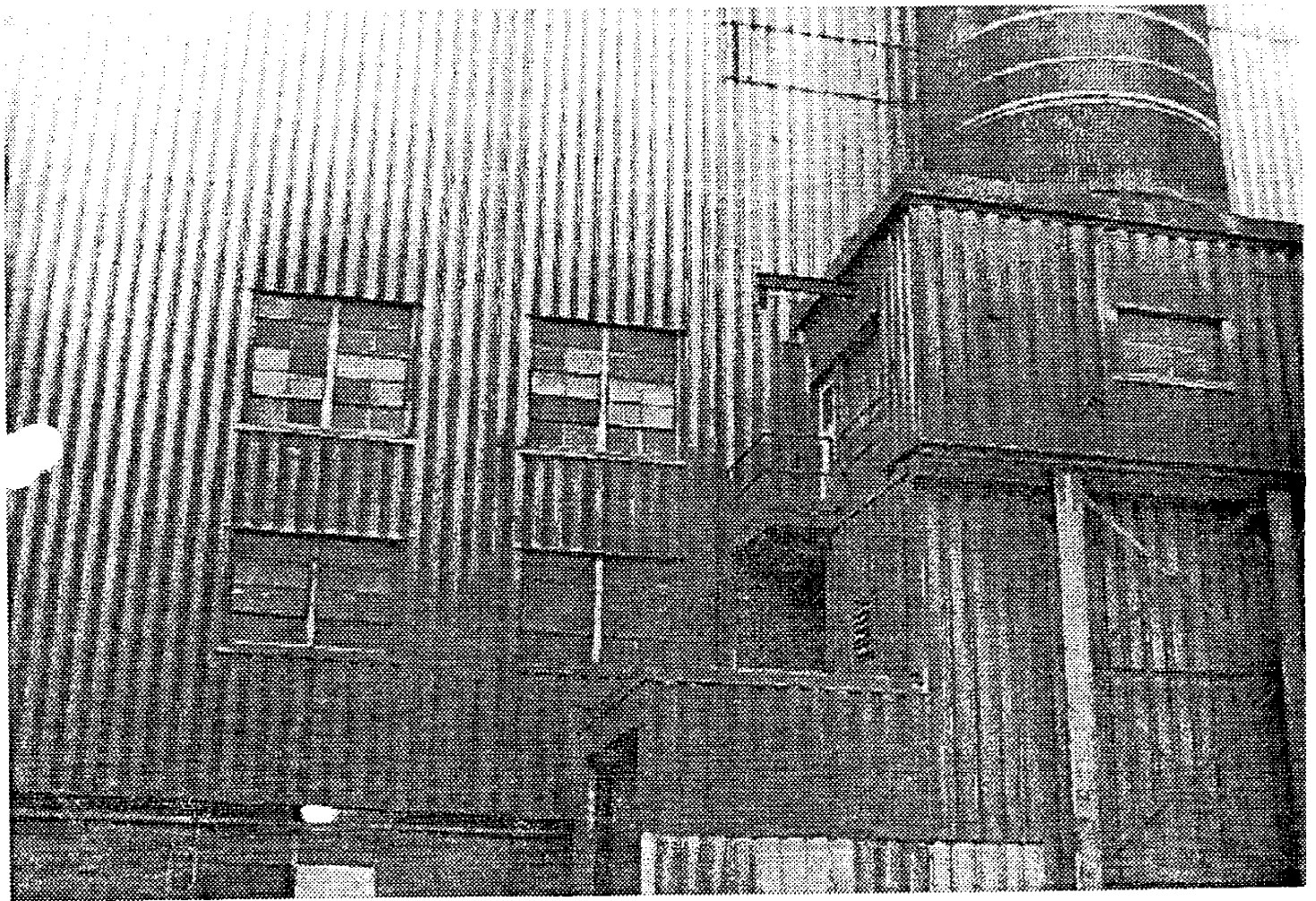
Miscellaneous &

Lighting No. 7

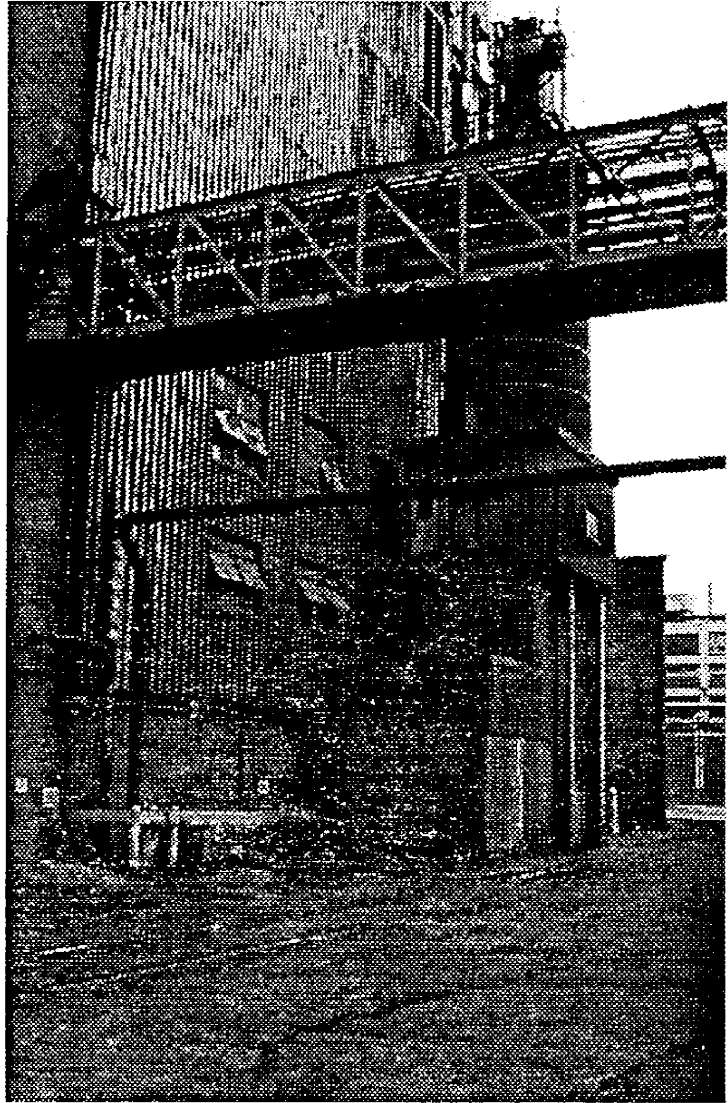
8/16/96

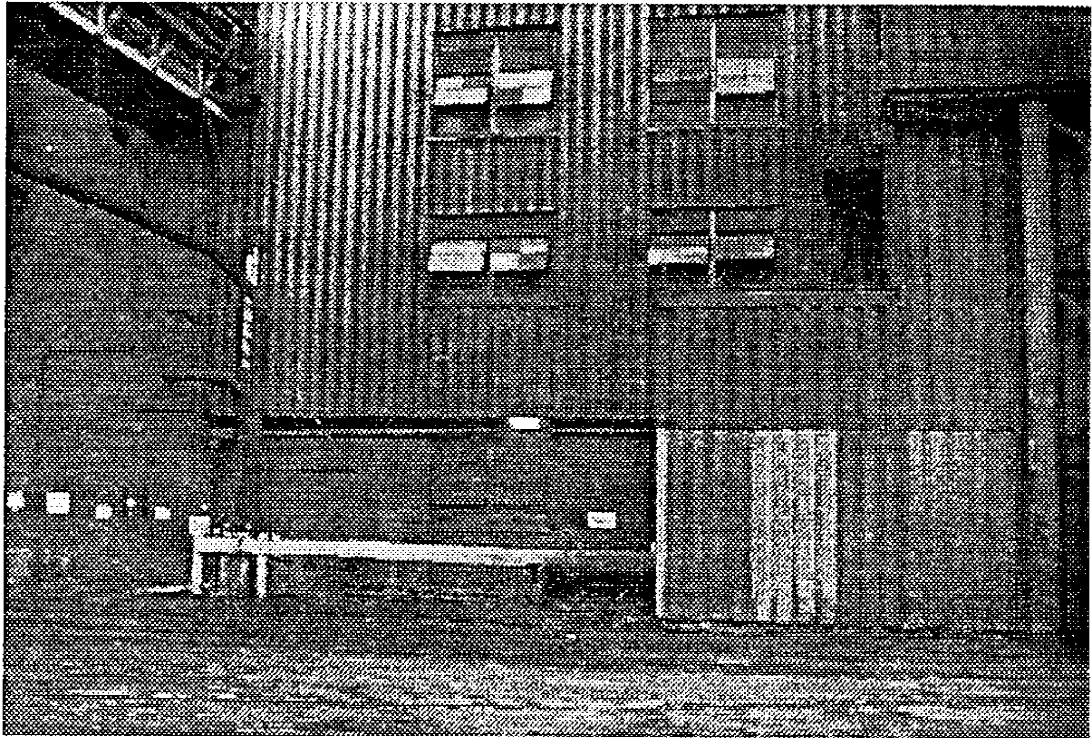
Designer:

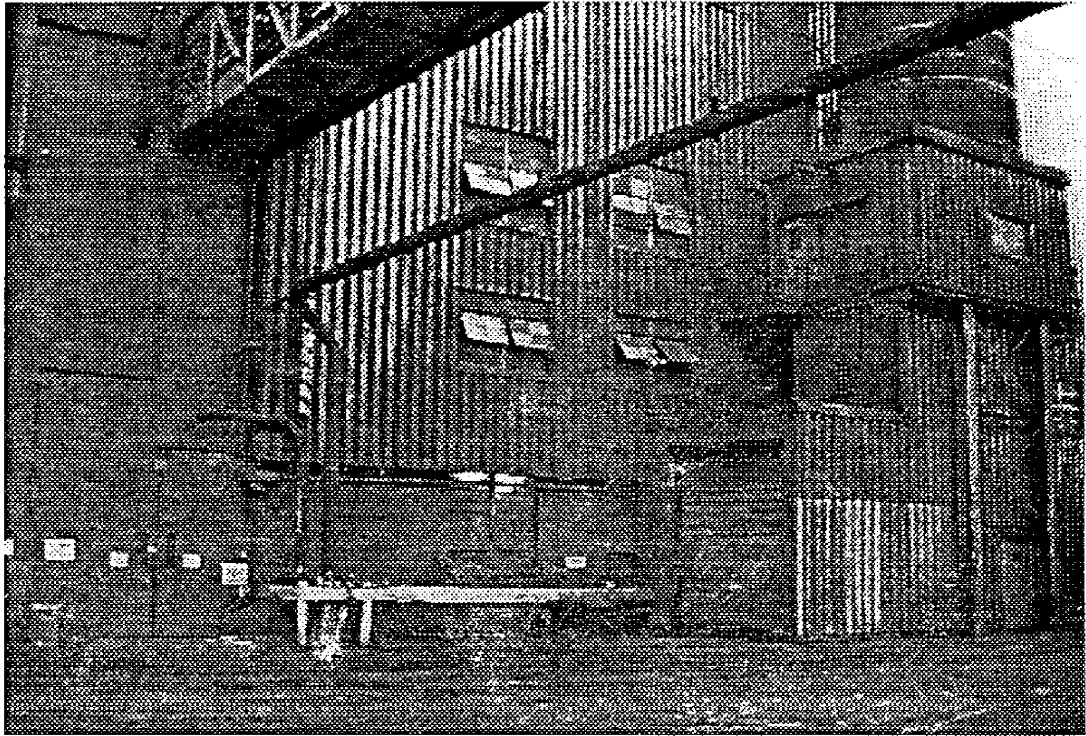


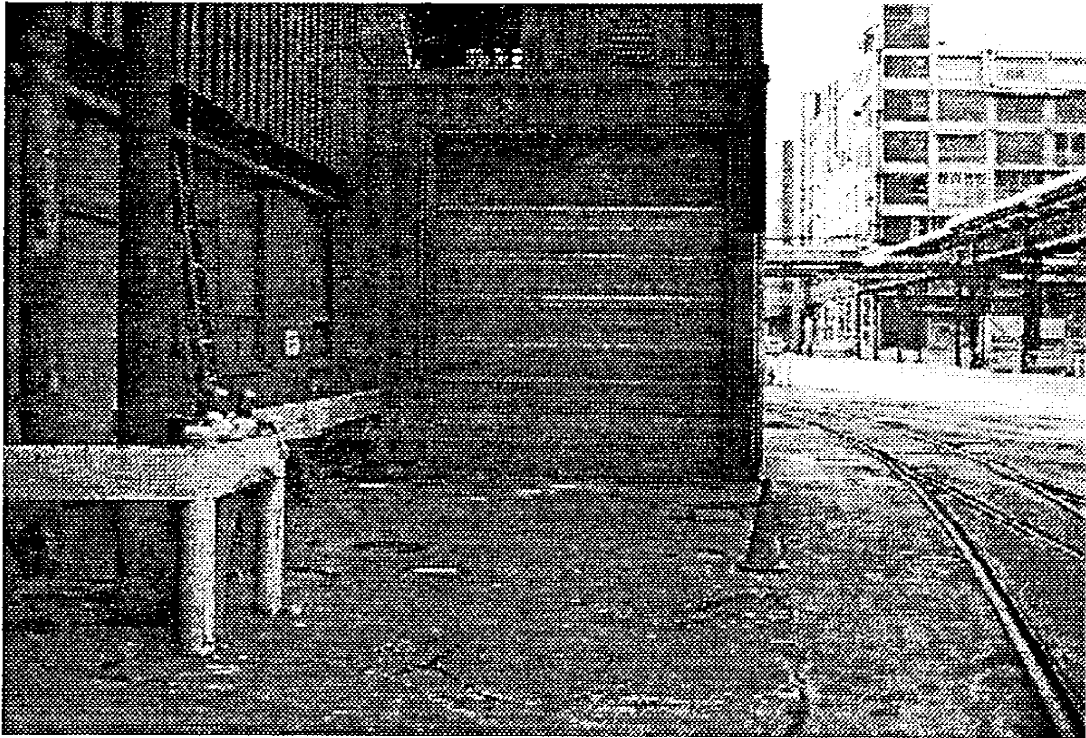


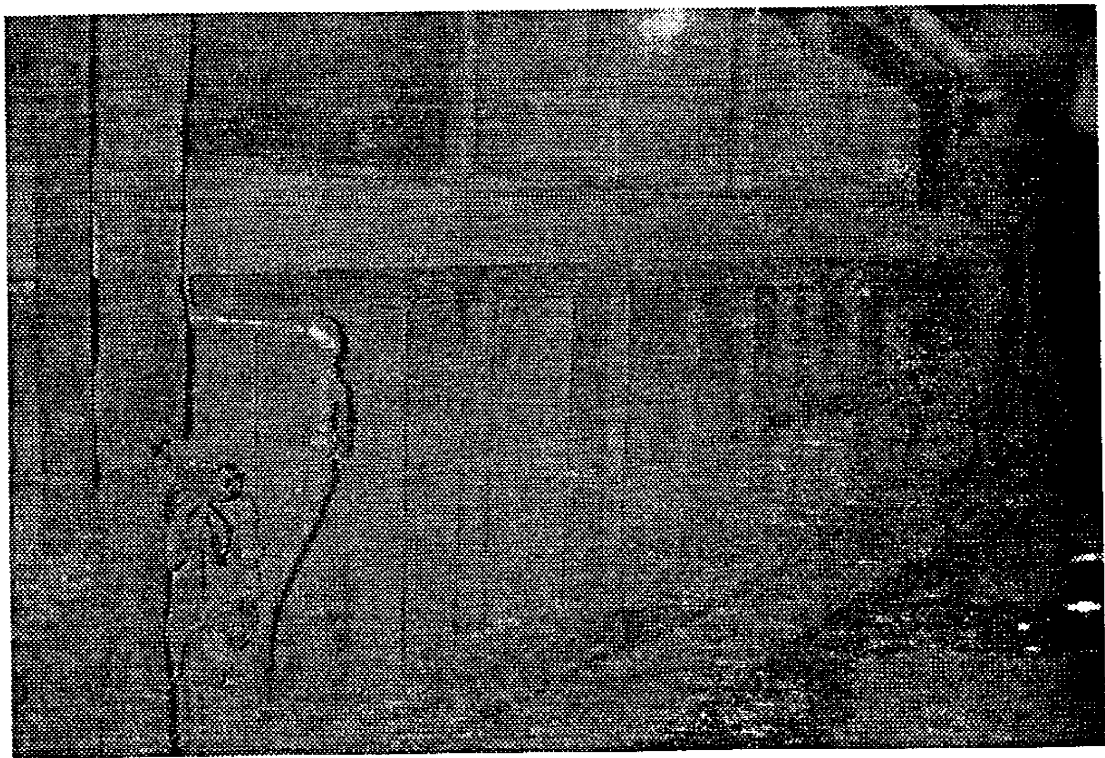
NEW BUILDING ADDITION LOCATION  
(LOOKING SOUTH)



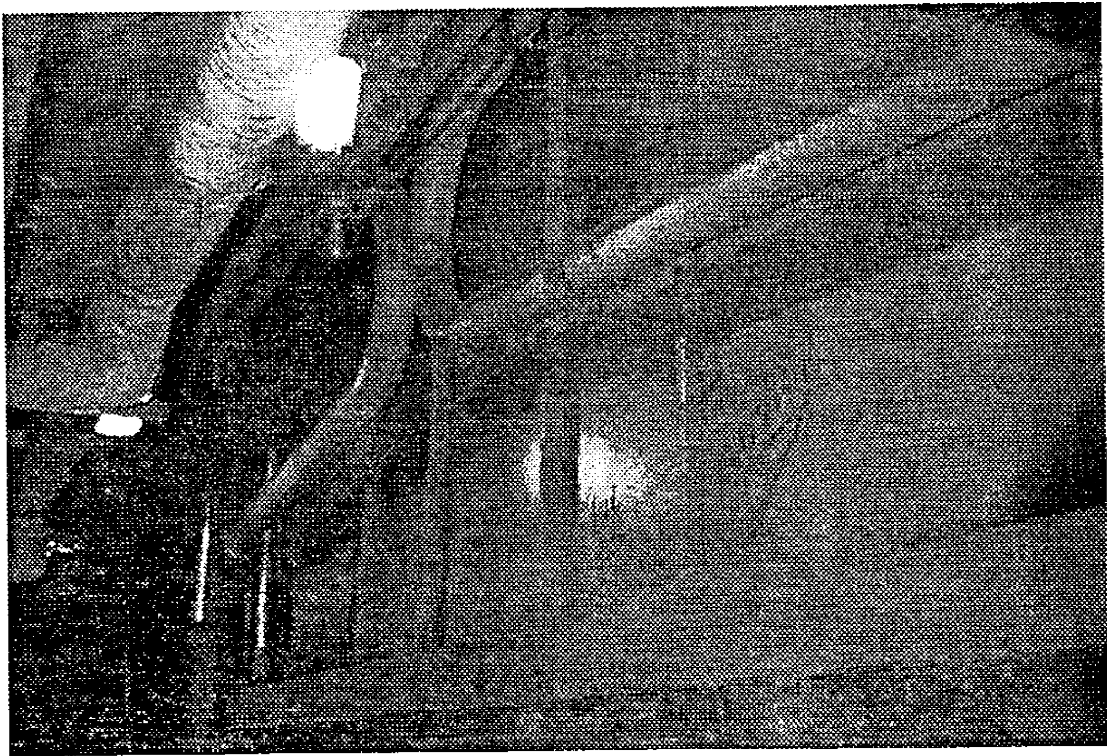






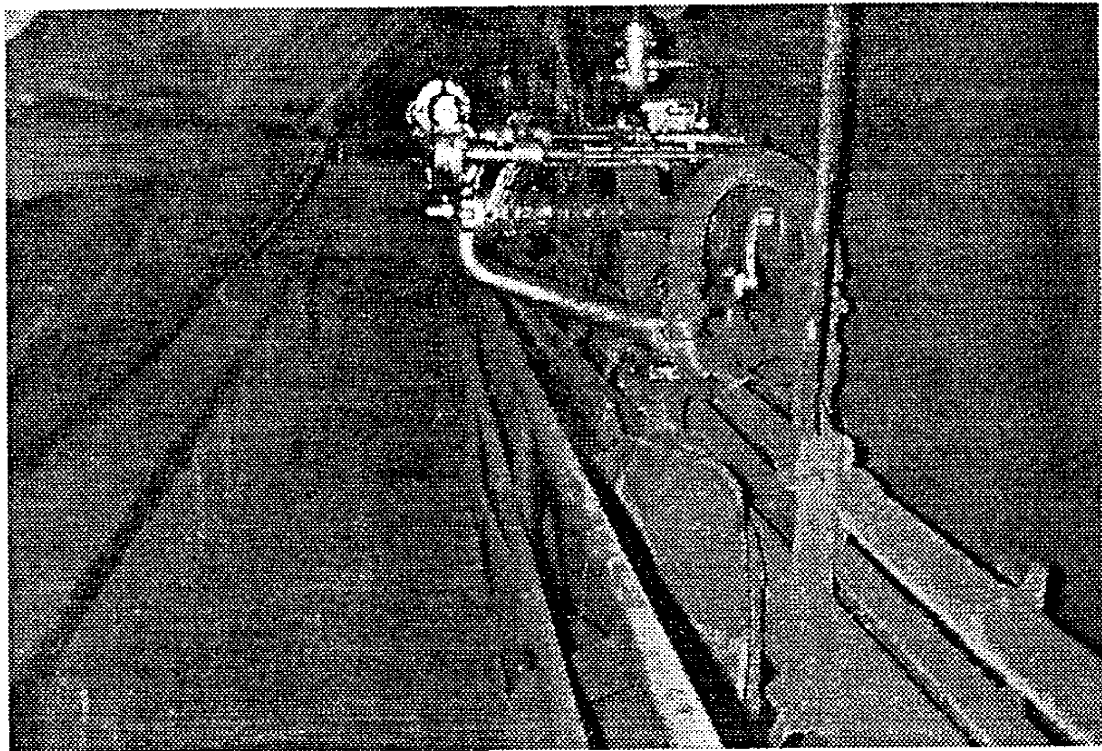


Boiler REAR  
(INJECTOR LOCATIONS)

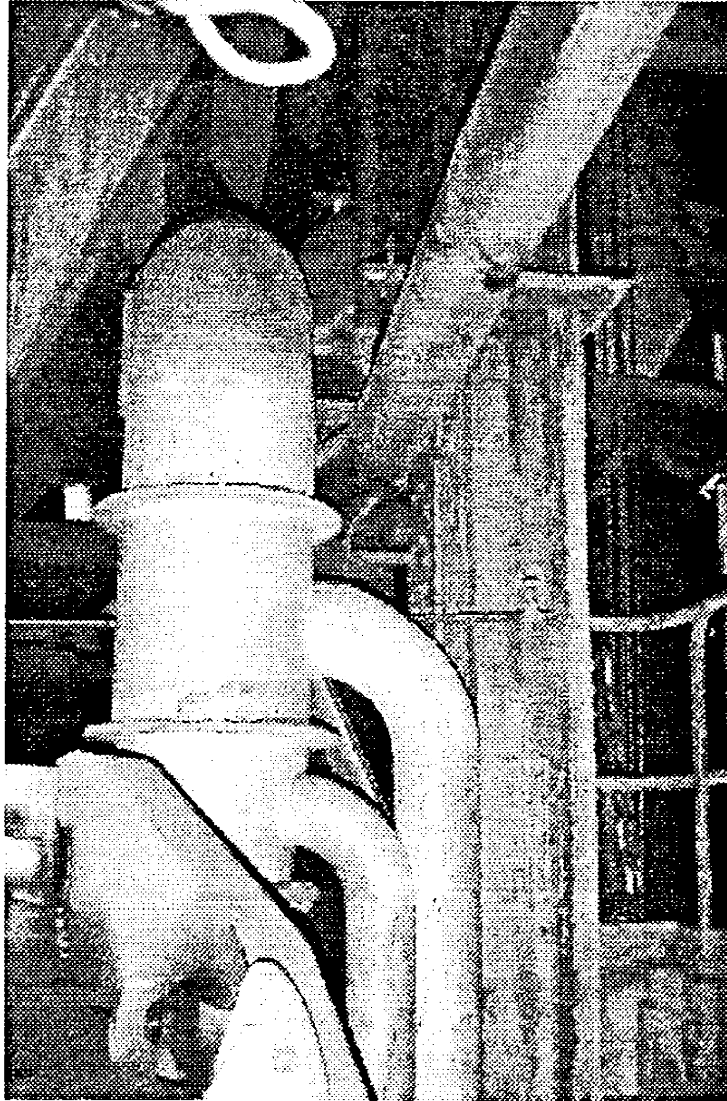


Boiler REAR  
(INJECTOR LOCATIONS)

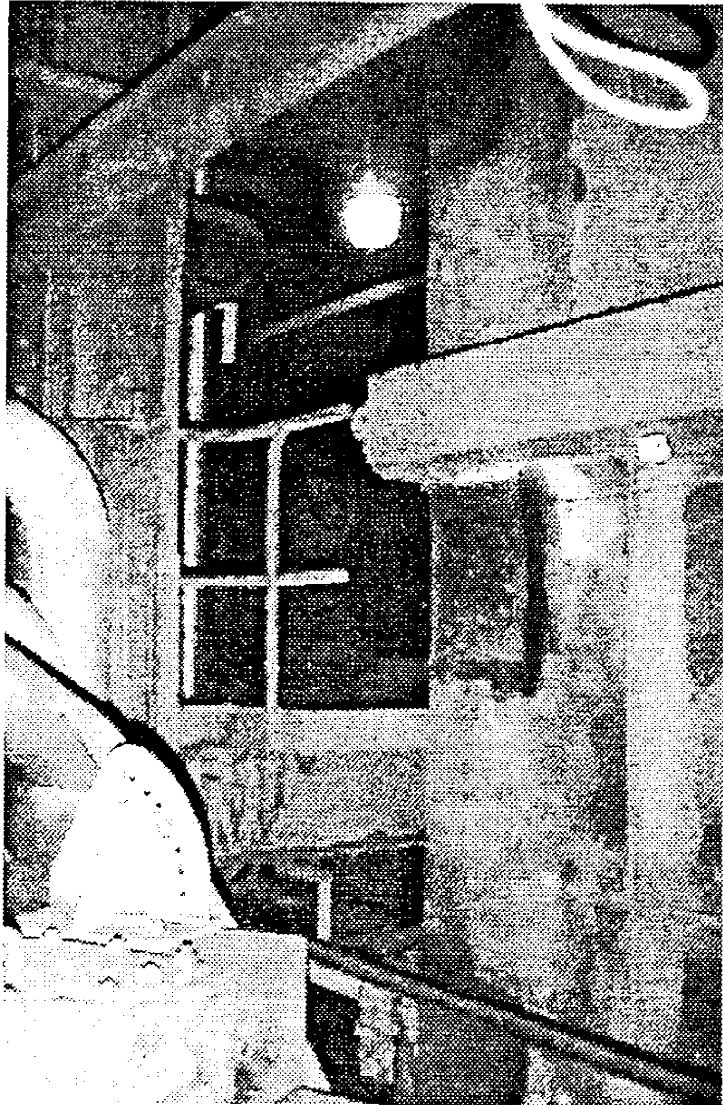




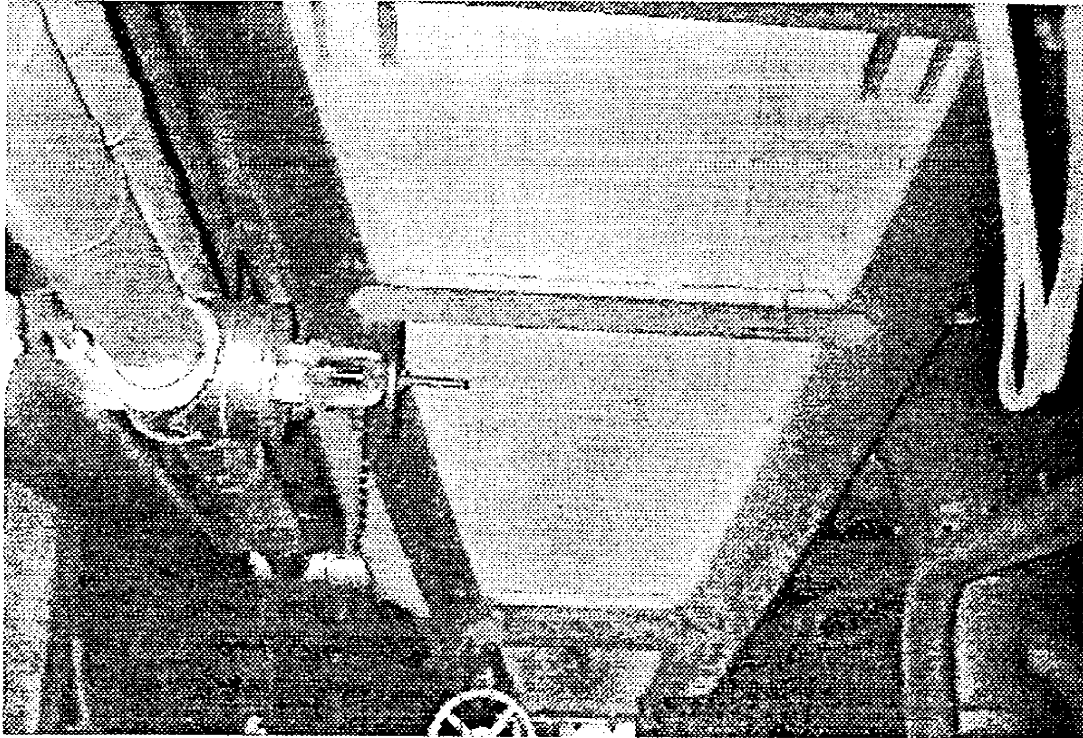
Boiler REAR  
@ IK SCOTBLOWER CATWALK  
(LOOKING EAST)



FEEDER FLOOR,  
LOOKING EAST @ TEMP. AIR DUCT



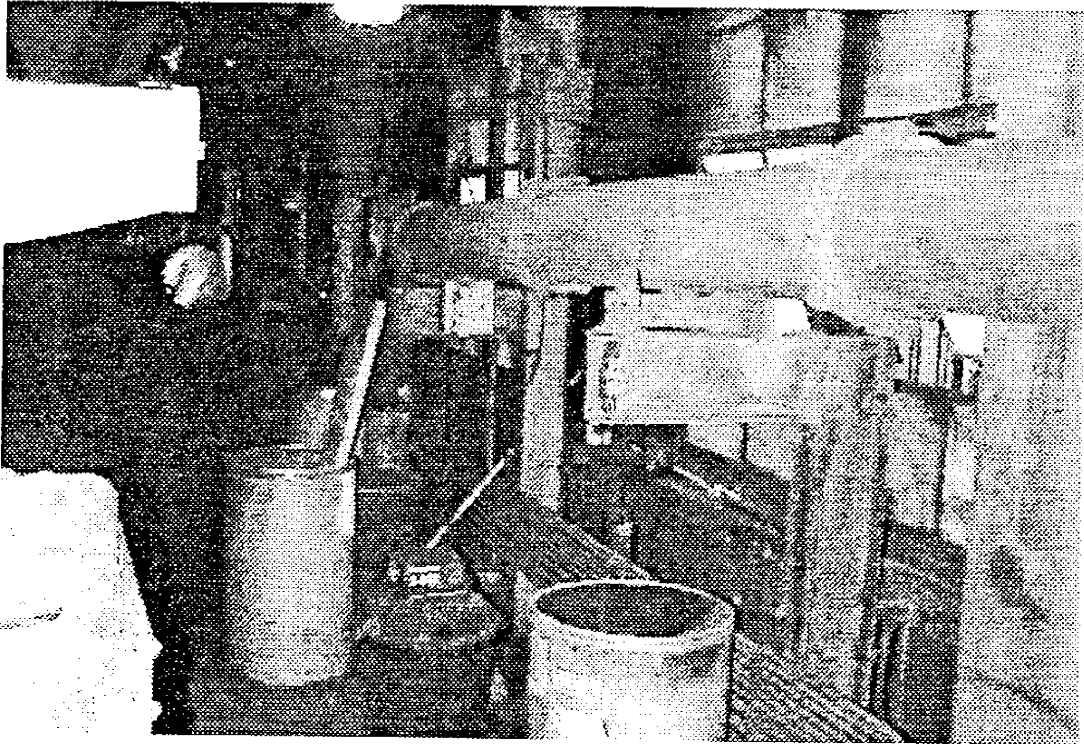
FEEDER FLOOR, EAST END,  
LOOKING SE.



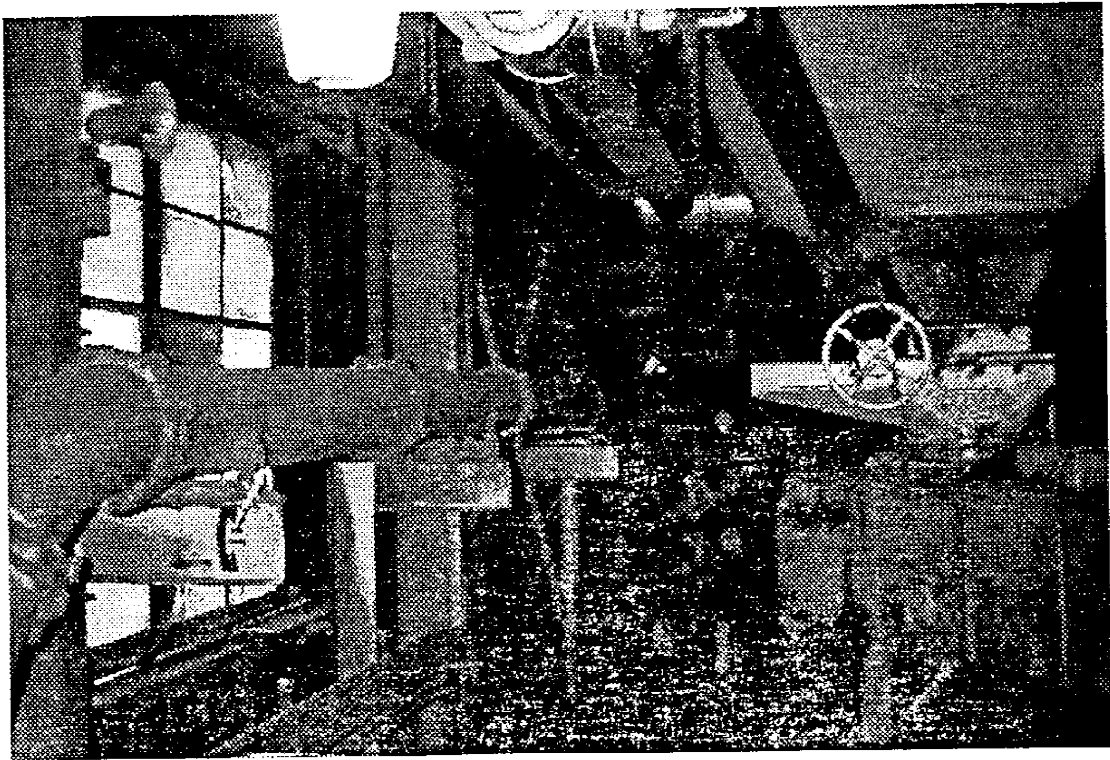
FEEDER FLOOR, EAST HOPPER,  
LOOKING EAST



FEEDER FLOOR,  
LOOKING NORTH.

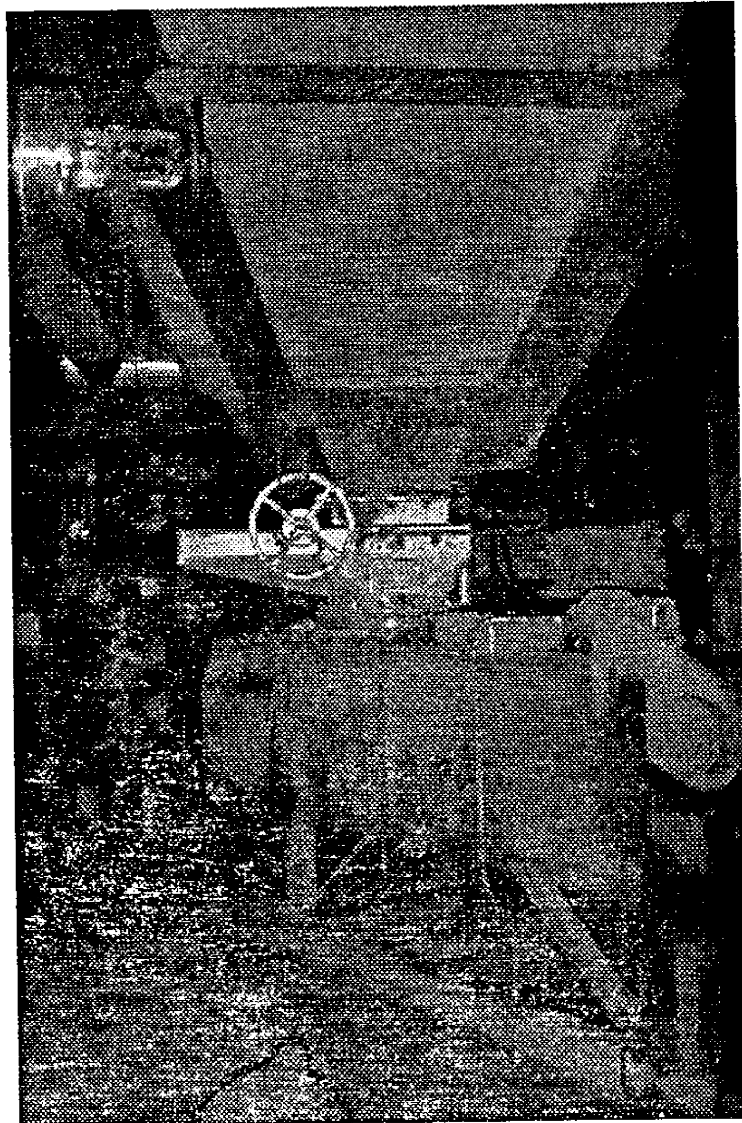


FEEDER FLOOR,  
LOOKING NW

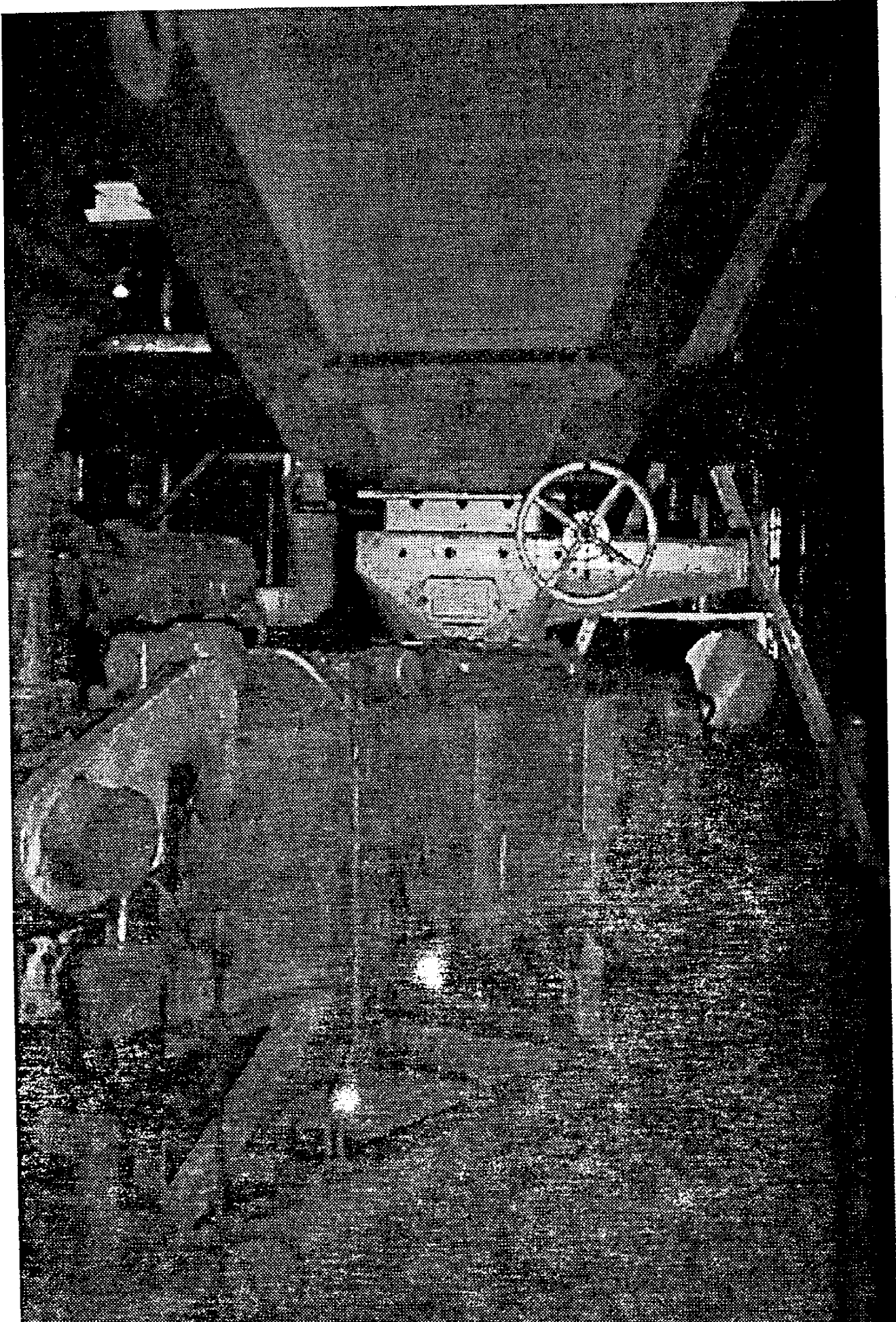


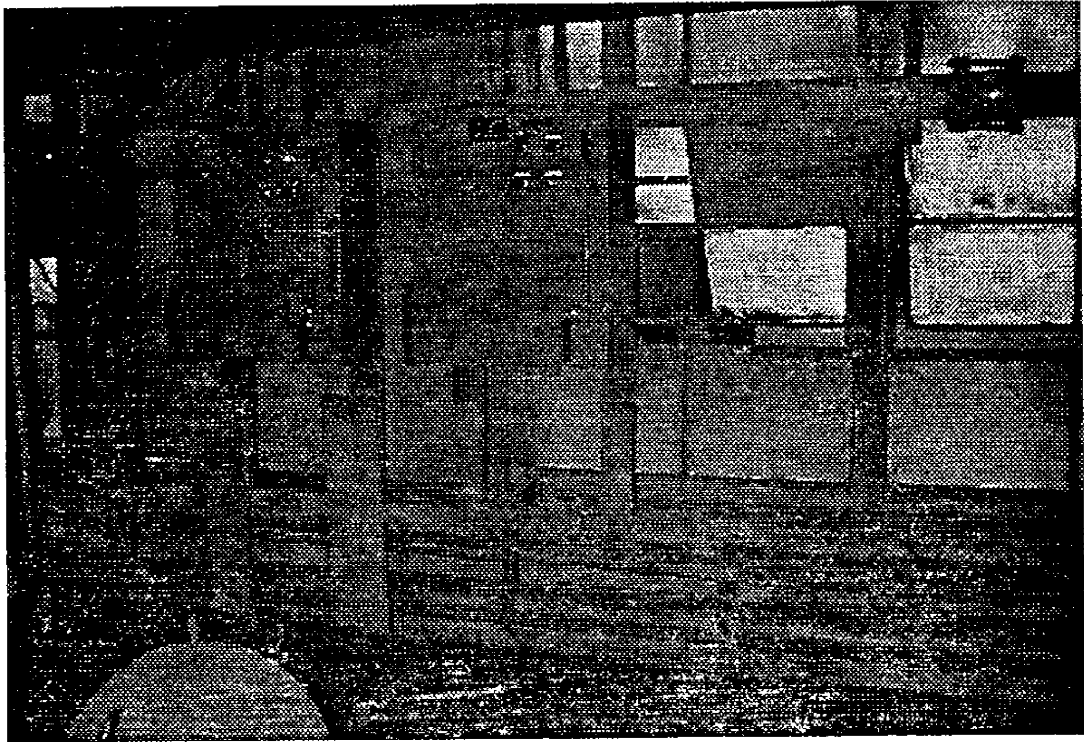
FEEDER FLOOR  
(LOOKING NE)



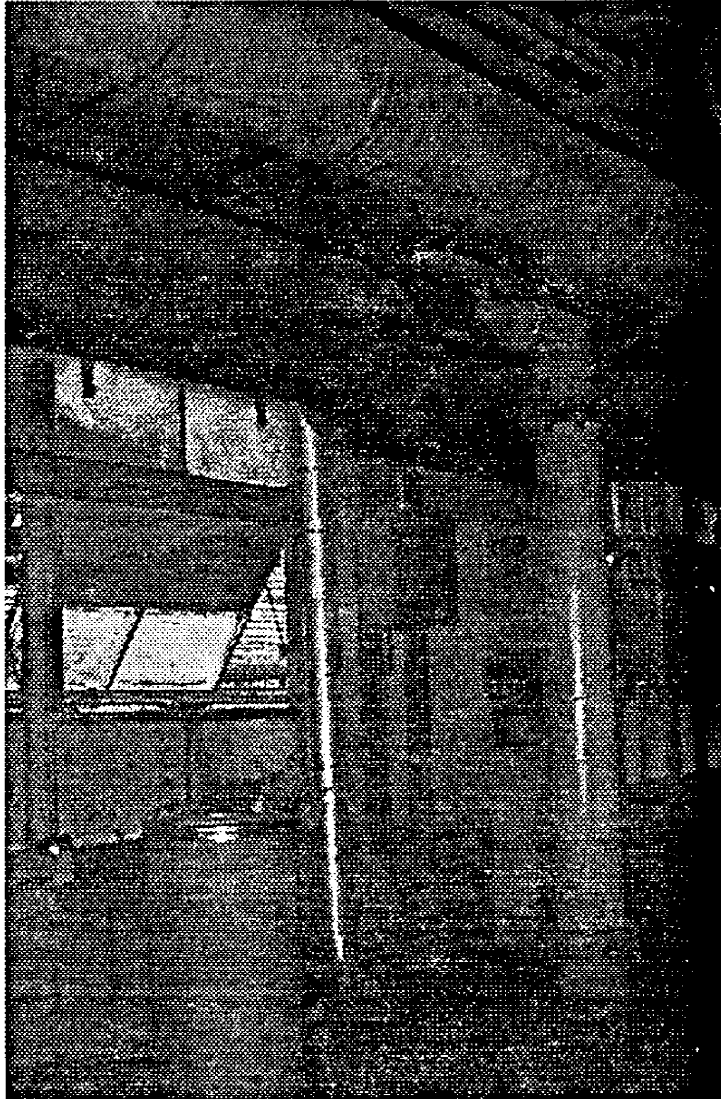


FEEDER FLOOR  
EAST FEEDER  
(LOOKING EAST)

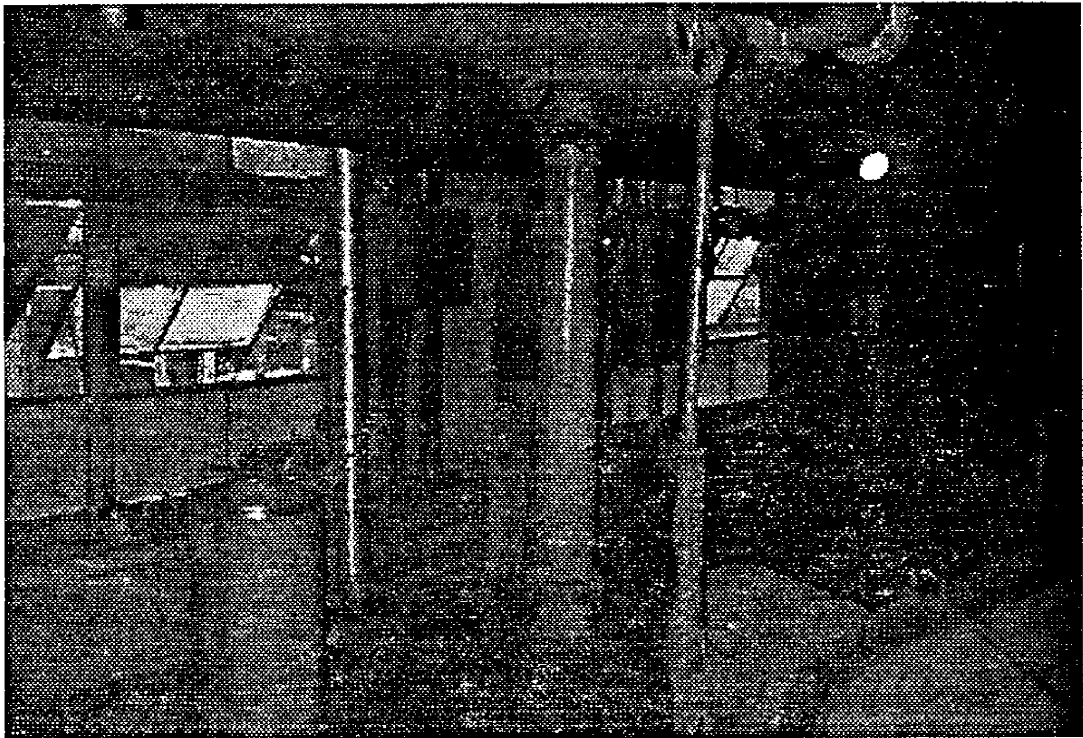




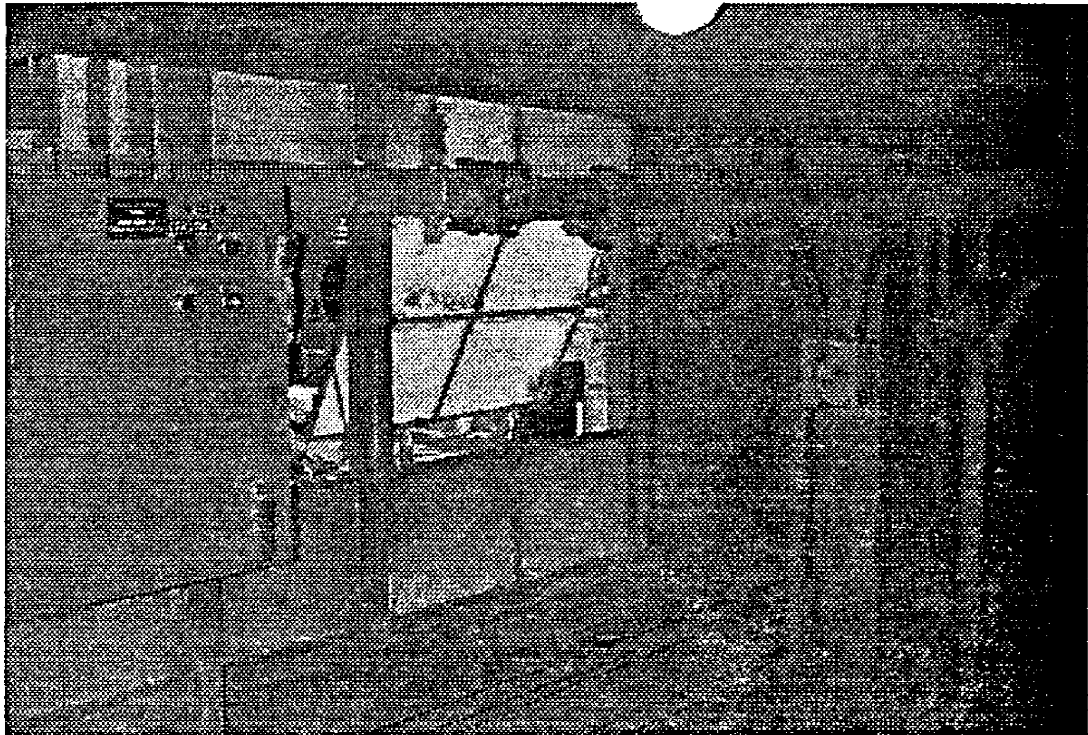
CRUSHER FLOOR,  
STAR SEAL CABS,  
LOOKING NORTH



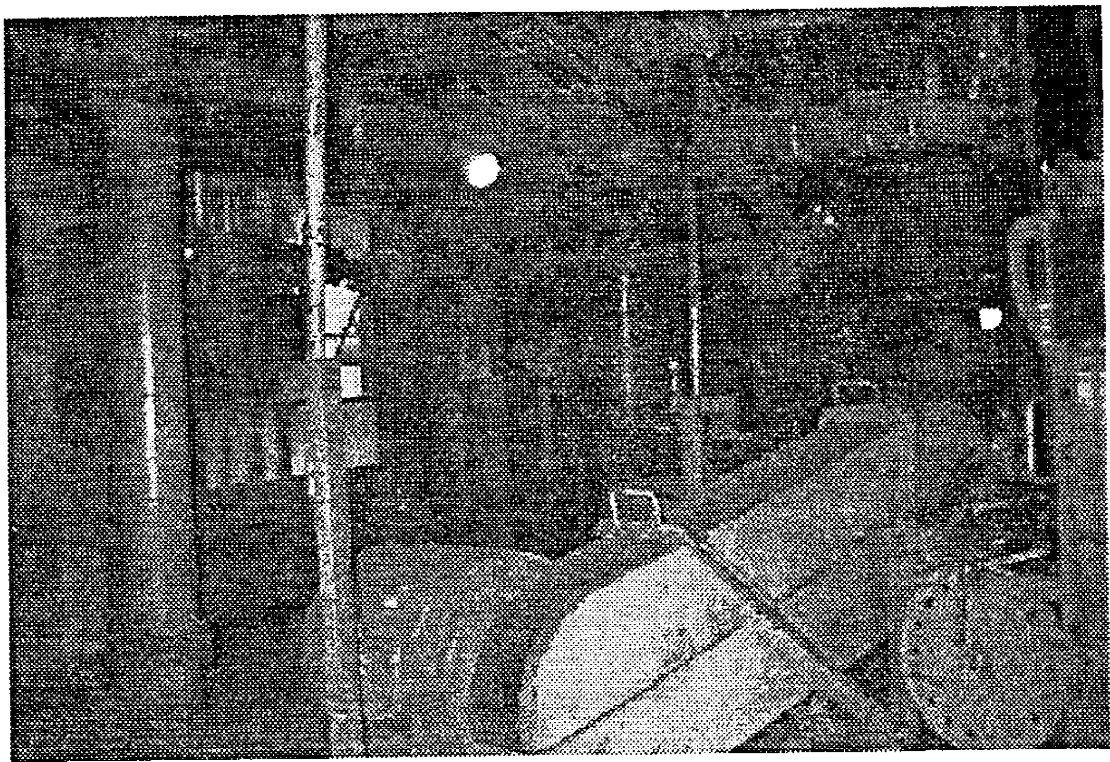
CRUSHER FLOOR,  
LOOKING NORTH



CRUSHER FLOOR,  
LOOKING NE

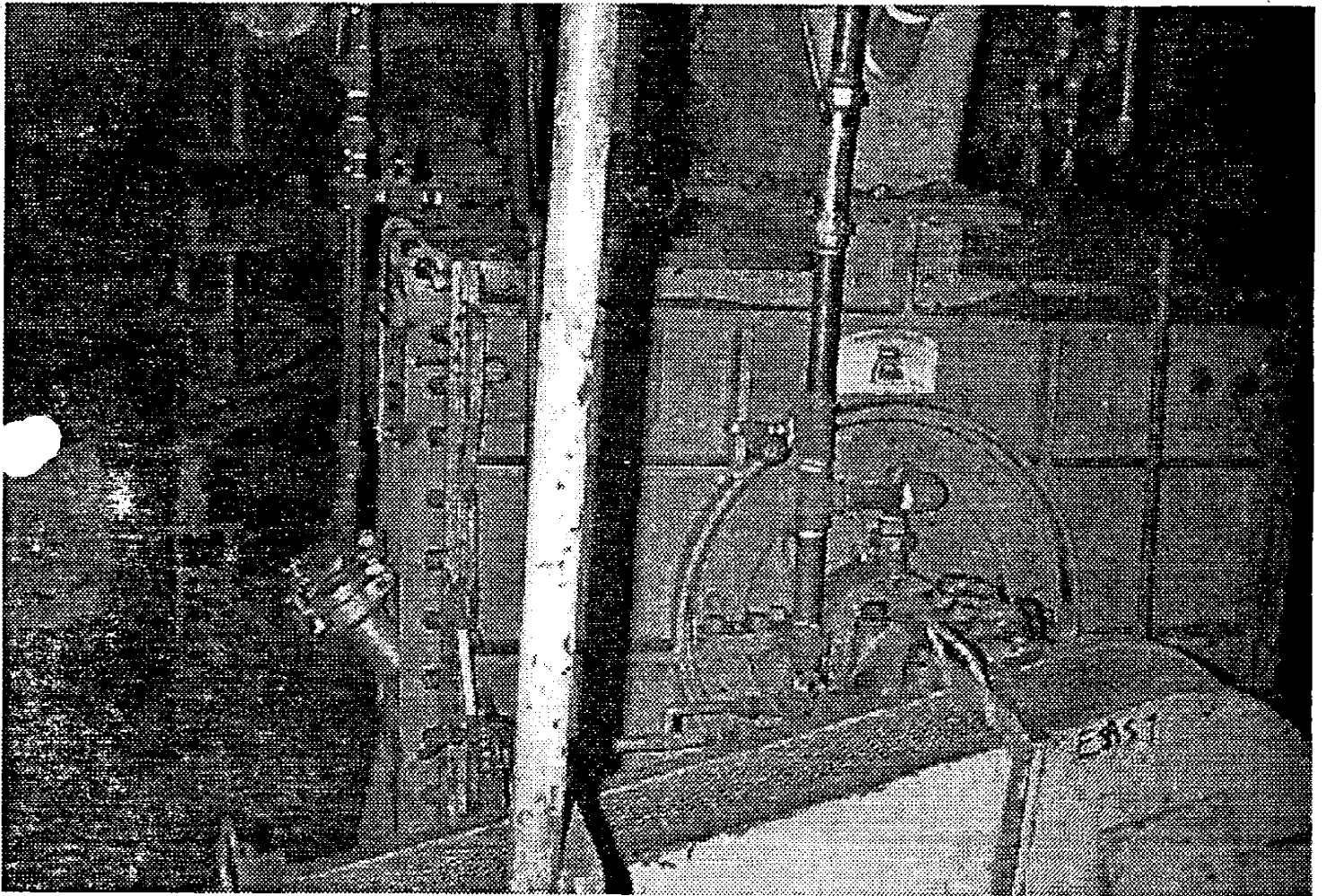


CRUSHER FLOOR,  
STAR SEAL CABINET,  
LOOKING NE



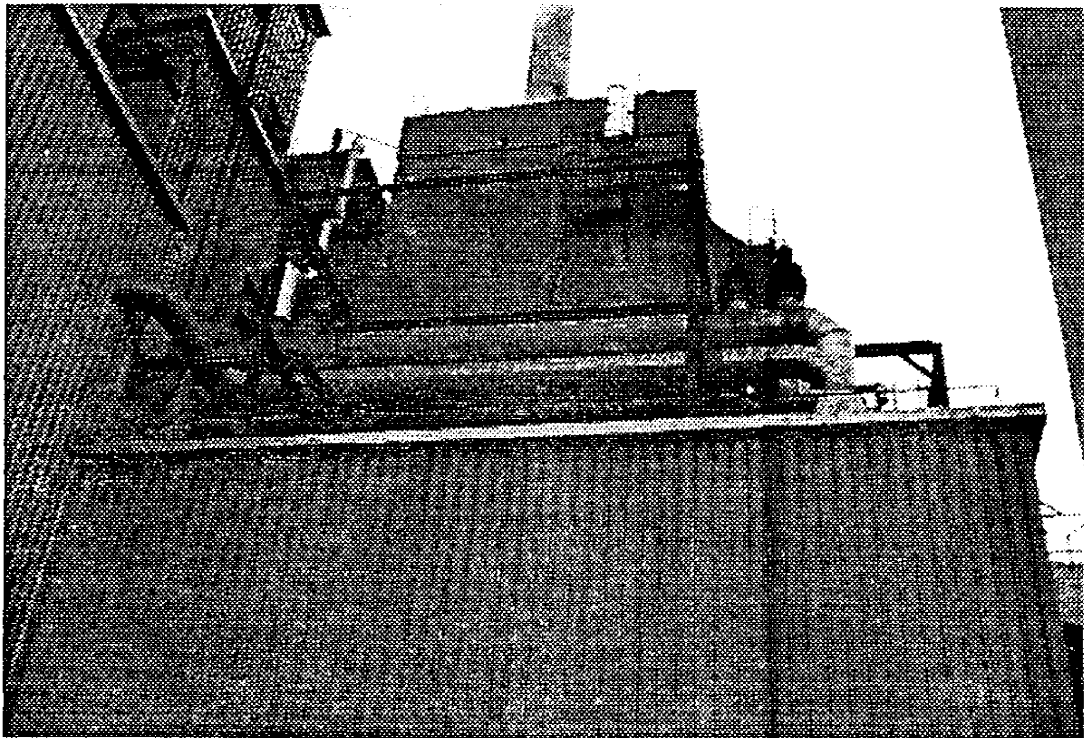
CRUSHER FLOOR  
(LOOKING NE)



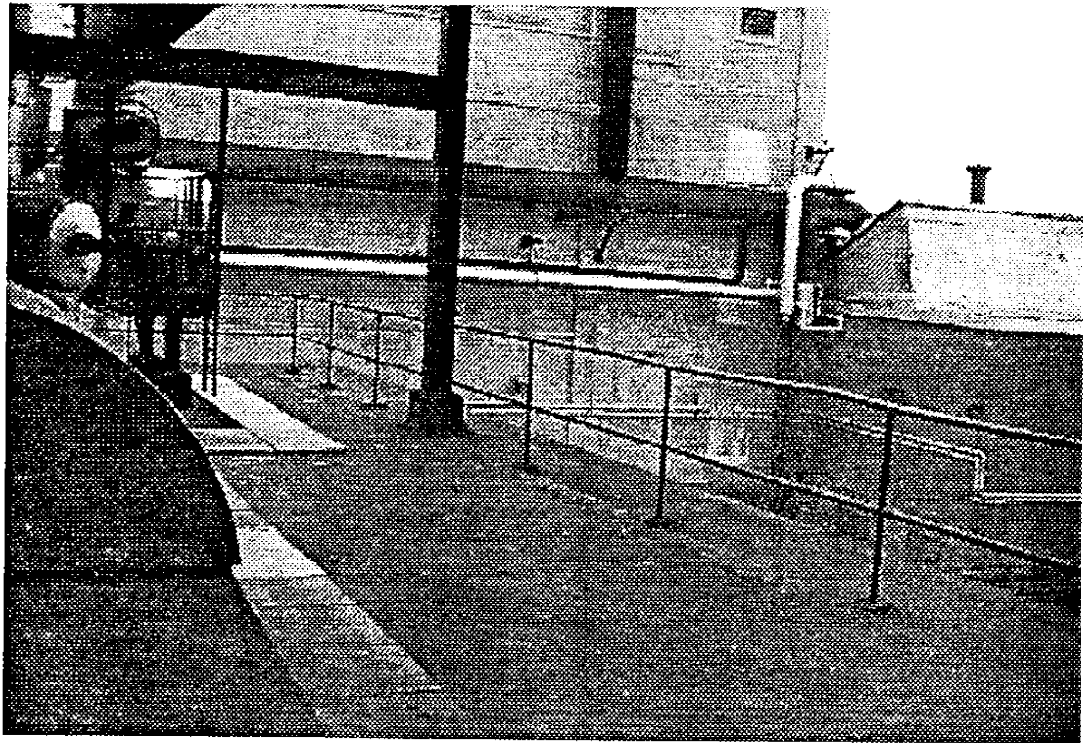


CRUSHER

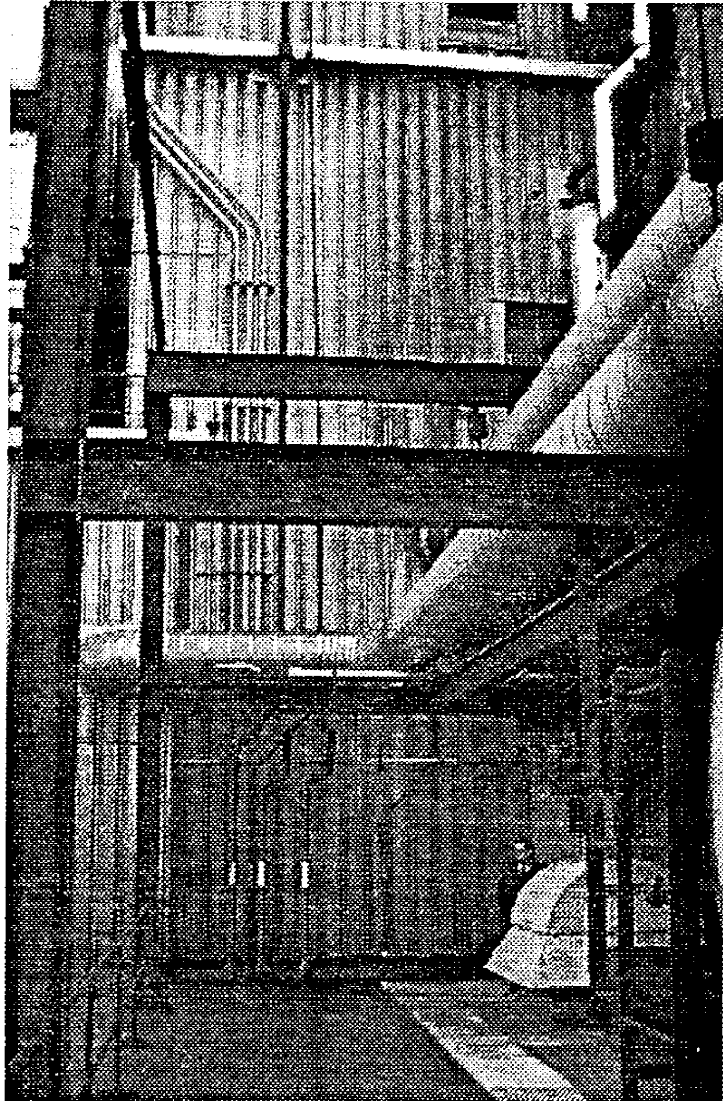




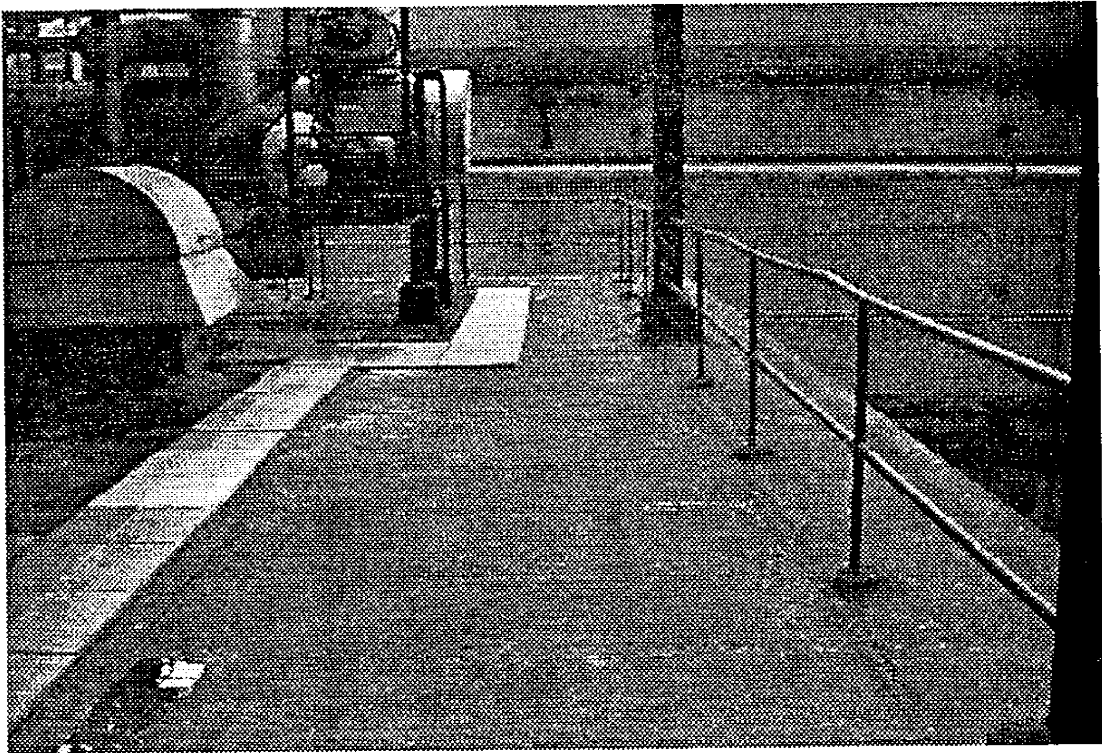
WEST END TB,  
LOOKING UP AND EAST  
(WHERE ENCLOSURE GOES)



WEST END TB ROOF,  
LOOKING SW WHERE  
ENCLOSURE GOES



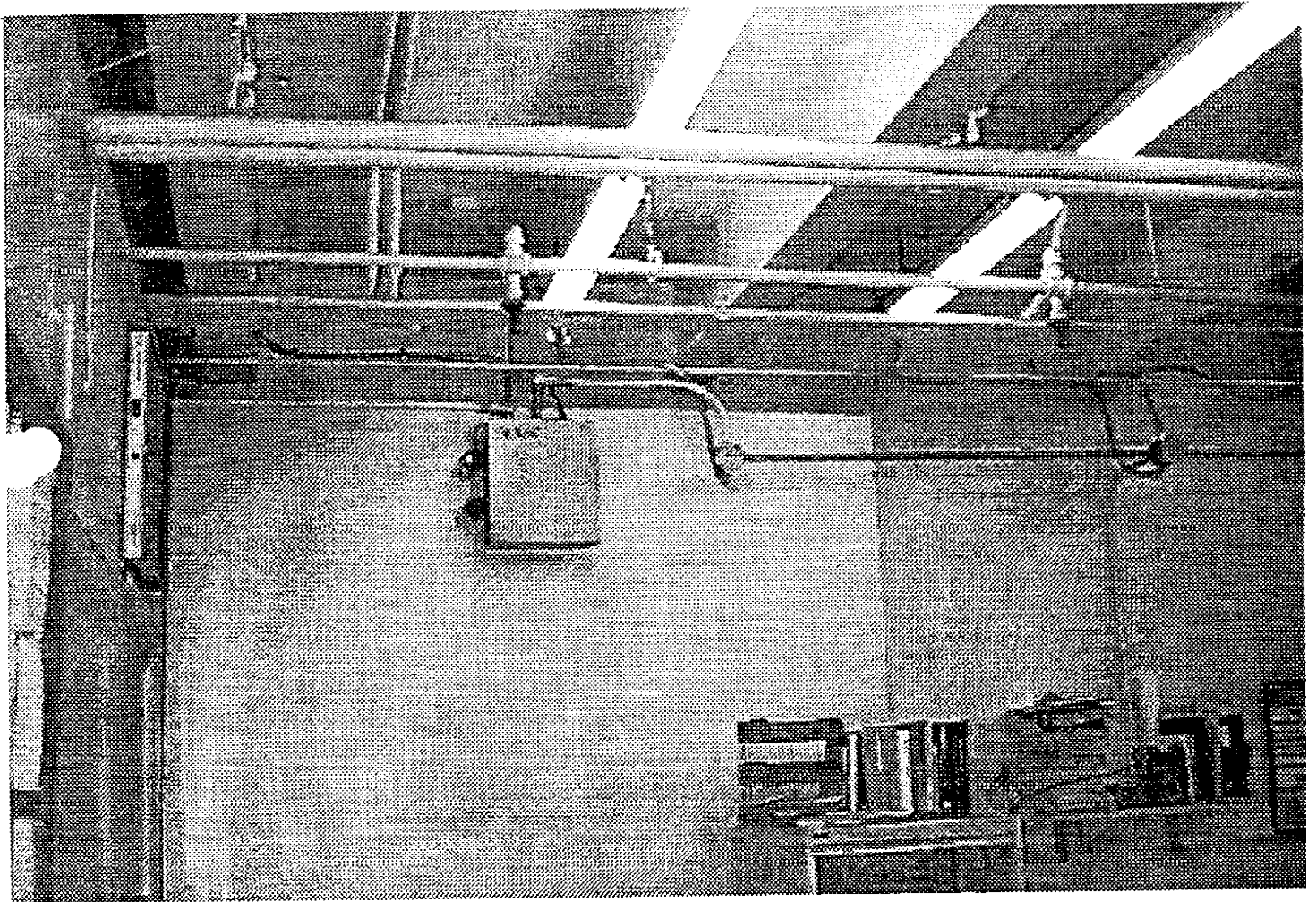
WEST END TB ROOF,  
LOOKING NORTH



WEST END TB ROOF  
(LOOKING SOUTH)



WEST END TB ROOF  
UNDER WDPF ENCLOSURE  
(LOOKING SW)



CONTROL ROOM LOCATION  
(Shop)

