

LIST OF FIGURES

Figure 1	Regional Map
Figure 2a	Site Location Map
Figure 2b	1997 Flooding Limits
Figure 3a	Preliminary Site Plan
Figure 3b	Union Street Bridge Plan
Figure 4	Soil Survey
Figure 5	Flood Insurance Rate Map
Figure 6	National Wetland Inventory Map





REGIONAL MAP

Sebewaing

FEMA-DR-1346-MI
Sebewaing River Intercounty
Drainage Board

Dewberry-Goodkind, Inc.

A Dewberry Company

Consulting Engineers
 299 Webro Road
 Parsippany, NJ 07054
 Phone (973) 428-4909

SCALE: 1 in=29 miles

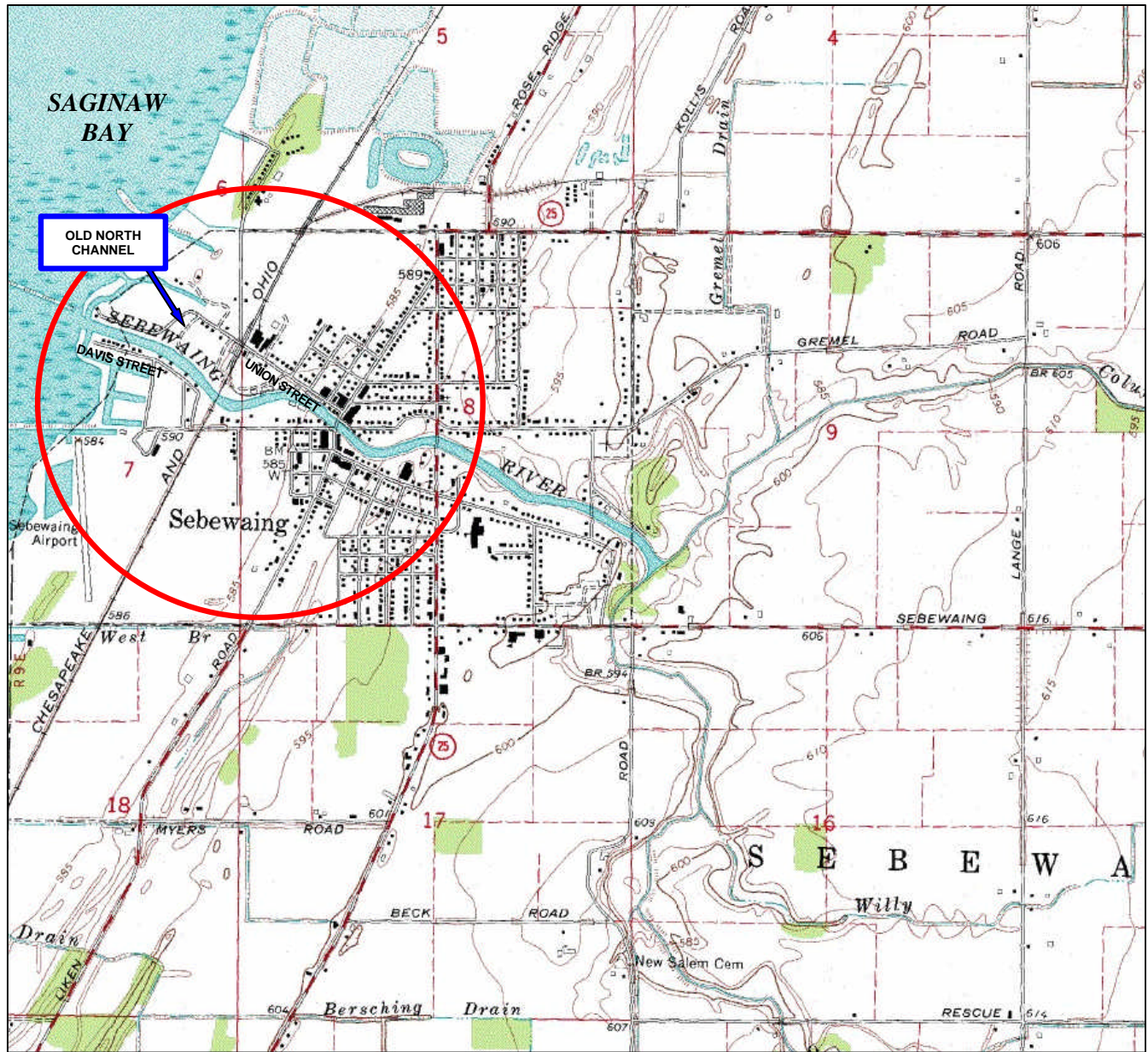
DRAWN BY
SD

CHECKED BY
AL

FIGURE

1

DATE: AUGUST, 2002



SITE LOCATION MAP

Sebewaing

FEMA-DR-1346-MI
Sebewaing River Intercounty
Drainage Board

Dewberry-Goodkind, Inc.

A Dewberry Company
 Consulting Engineers
 299 Webro Road
 Parsippany, NJ 07054
 Phone (973) 428-4909

SCALE: NTS

DRAWN BY
SD

CHECKED BY
AL

FIGURE
2a

DATE: JULY, 2002

LAKE HURON

FLOOD WATERS OVERTOPPED ROAD AND SURROUNDING AREA FOR APPROX. 2 TO 3 DAYS. WATER OVERTOPPED BANK IN SEVERAL LOCATIONS BETWEEN RAILROAD TRACKS AND THE OLD NORTH CHANNEL, AS WELL AS IN ALONG THE OLD NORTH CHANNEL.

BAY SHORE CAMPGROUND

SEBEWAING

M-25

POWER PLANT

PINE ST

MILLER ST
(6) Homes

(4) Homes

(2) Homes
One Evacuated

SENIOR CITIZEN CENTER
(1) HOME EVACUATED

COUNTY PARK CAMPGROUND

SEBEWAING RIVER

SUBDIVISION
(46 HOMES)

MARINA

FLOODING OVER ROAD FOR APPROXIMATELY 6 TO 7 HOURS. WATER OVERTOPPED AT BOAT ENTRANCE TO MARINA

AIRPORT

MOTEL

MINOR FLOODING OF SHORT DURATION. BACK UP THROUGH STORM SEWER

Client: FEMA

Proj:

Scale: NOT TO SCALE

File: G:/15292488/Project/Sebewaing.mxd

Title: 1997 Flooding Limits

Figure: 2b

URS

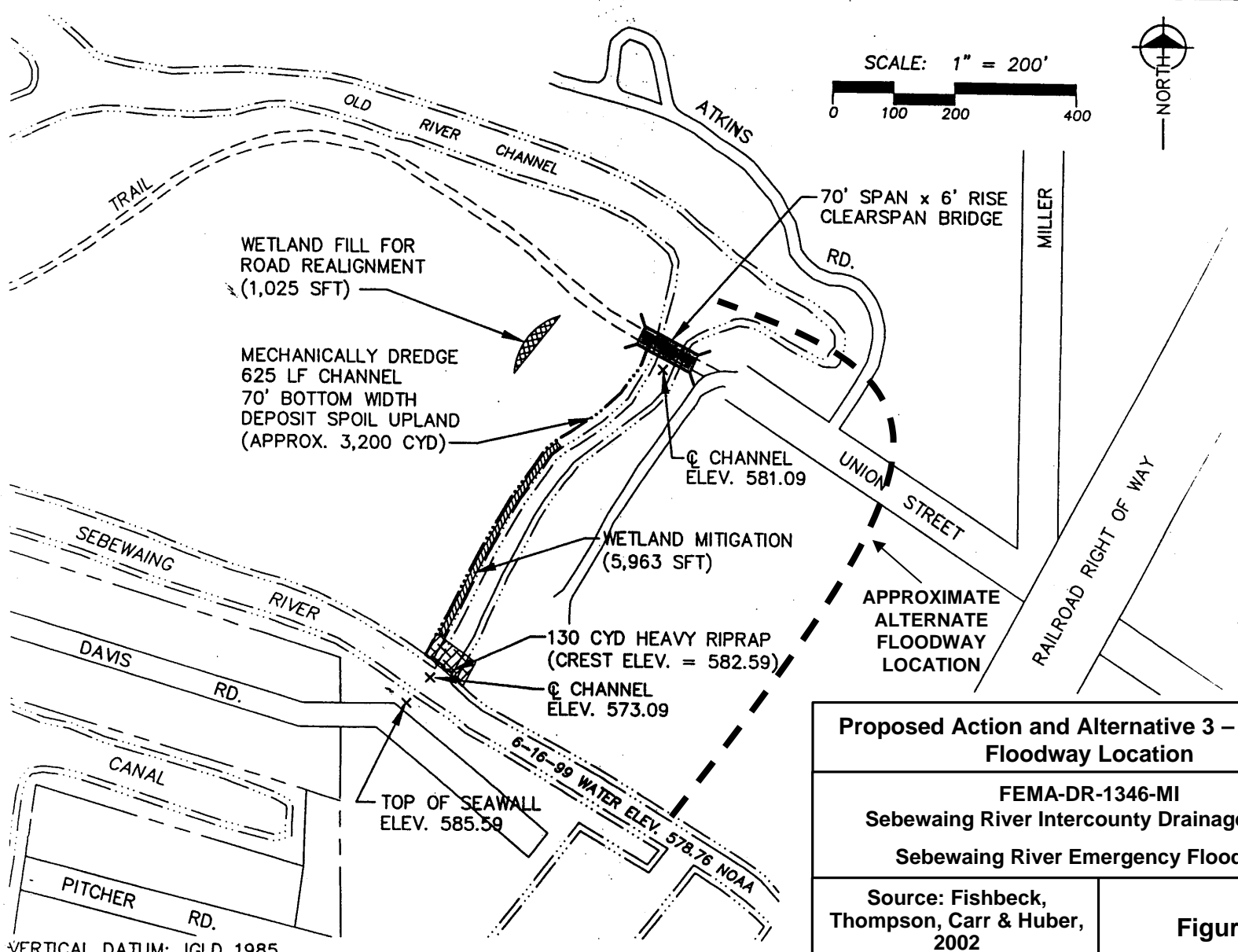


DISTRICT BOUNDARY

NORTH

SCALE: 1" = 200'

0 100 200 400



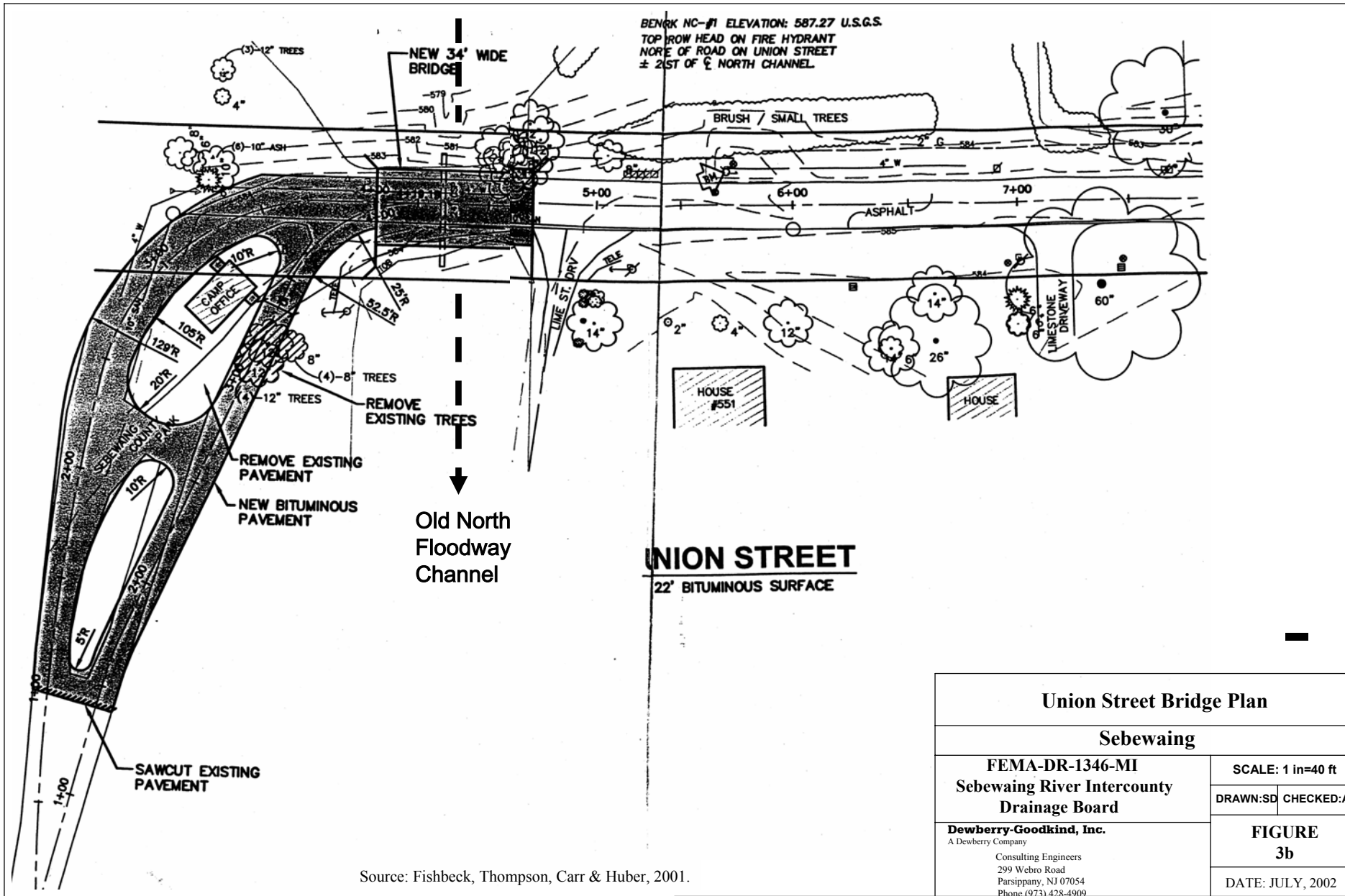
Proposed Action and Alternative 3 – Alternate Floodway Location

FEMA-DR-1346-MI
 Sebewaing River Intercounty Drainage Board
 Sebewaing River Emergency Floodway

Source: Fishbeck, Thompson, Carr & Huber, 2002

Figure 3a

VERTICAL DATUM: IGLD 1985



BENK NC-#1 ELEVATION: 587.27 U.S.G.S.
 TOP ROW HEAD ON FIRE HYDRANT
 NORTHE OF ROAD ON UNION STREET
 ± 21ST OF C NORTH CHANNEL

Old North
 Floodway
 Channel

UNION STREET
 22' BITUMINOUS SURFACE

Union Street Bridge Plan

Sebewaing

FEMA-DR-1346-MI
Sebewaing River Intercounty
Drainage Board

Dewberry-Goodkind, Inc.
 A Dewberry Company

Consulting Engineers
 299 Webro Road
 Parsippany, NJ 07054
 Phone (973) 428-4909

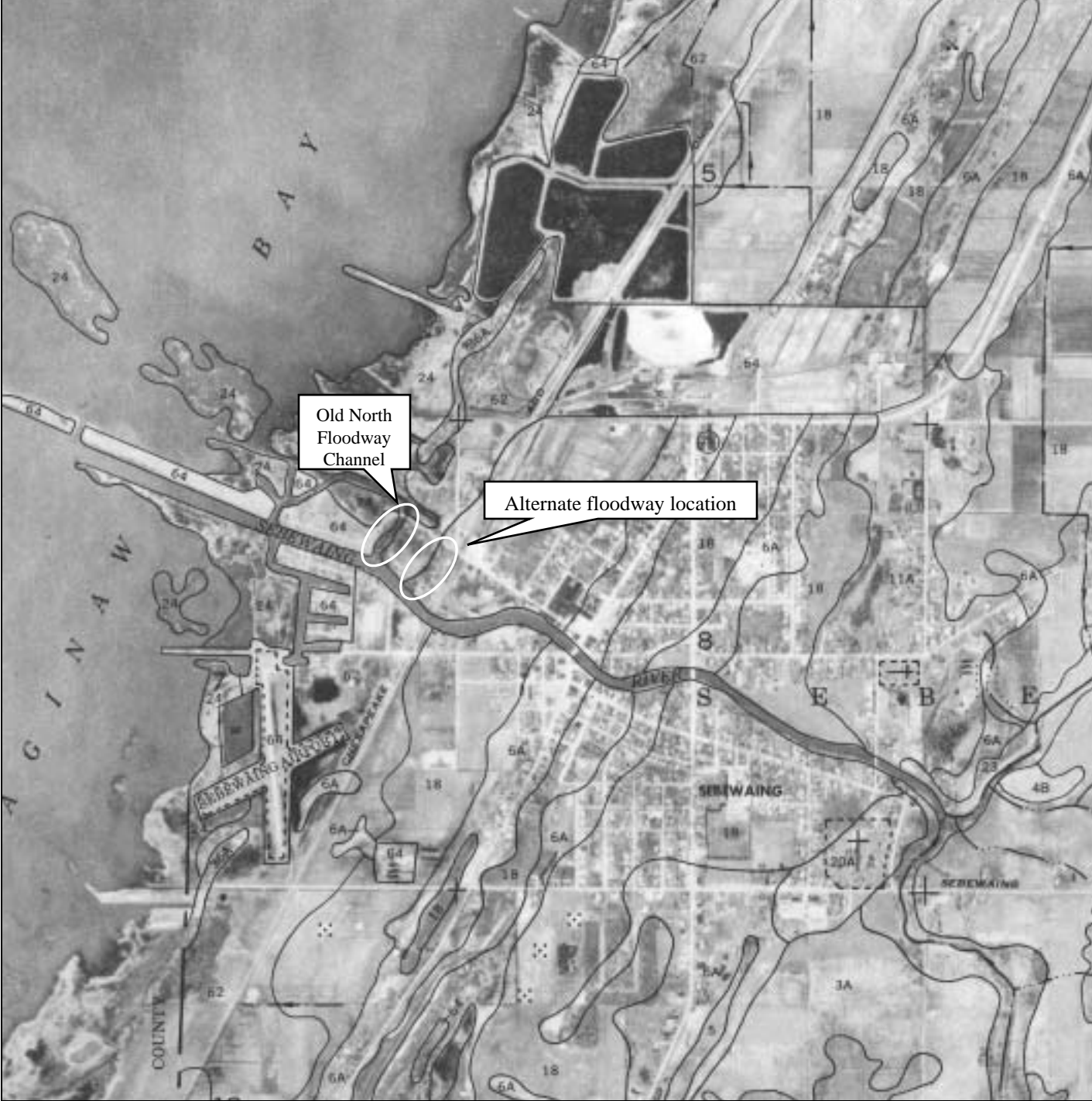
SCALE: 1 in=40 ft

DRAWN:SD CHECKED:A

FIGURE
3b

DATE: JULY, 2002

Source: Fishbeck, Thompson, Carr & Huber, 2001.



Old North Floodway Channel

Alternate floodway location

Legend

- 18 - Tappan Loam
- 24 - Aquents and Histosols, ponded
- 62 - Essexville loamy sand
- 64 - Udipsamments, nearly level

SOIL SURVEY

Sebewaing

FEMA-DR-1346-MI
Sebewaing River Intercounty
Drainage Board

Dewberry-Goodkind, Inc.
 A Dewberry Company

Consulting Engineers
 299 Webro Road
 Parsippany, NJ 07054
 Phone (973) 428-4909

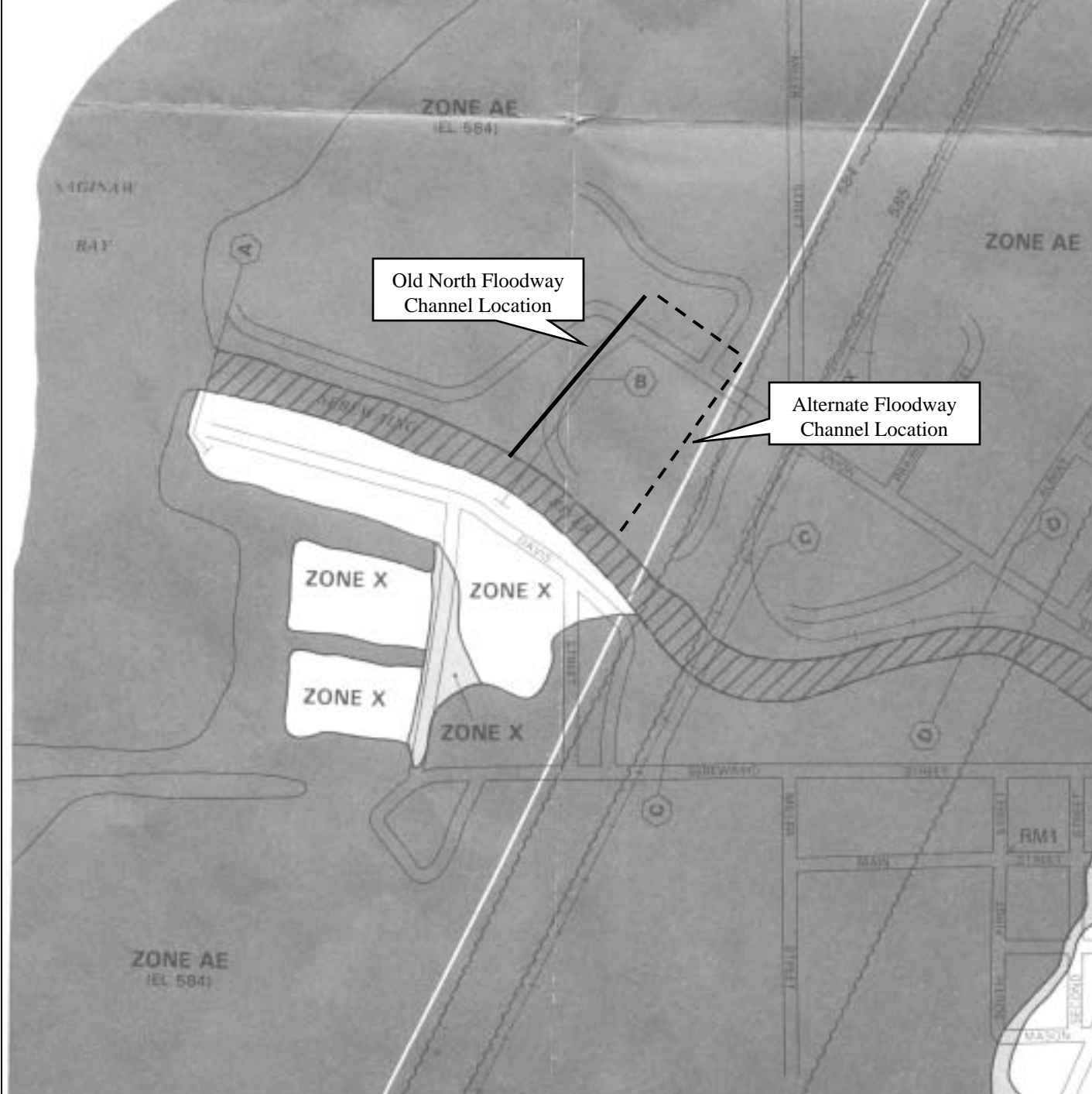
SCALE: 1:20,000

DRAWN BY
SD

CHECKED BY
AL

FIGURE
4

DATE: JULY, 2002



Legend

- AE – Flood Hazard Areas inundated by 100-year flood. Base flood elevations determined.
- X (gray) – Areas of 500-year flood.
- X (white) – Areas outside of 500-year flood plain.

Source: FEMA Flood Insurance Rate Map, Village of Sebawaing, Huron County, Michigan, 1987. Community Panel Number 260572 0001 A.

FLOOD INSURANCE RATE MAP

Sebawaing

FEMA-DR-1346-MI
Sebawaing River Intercounty
Drainage Board

Dewberry-Goodkind, Inc.
 A Dewberry Company

Consulting Engineers
 299 Webro Road
 Parsippany, NJ 07054
 Phone (973) 428-4909

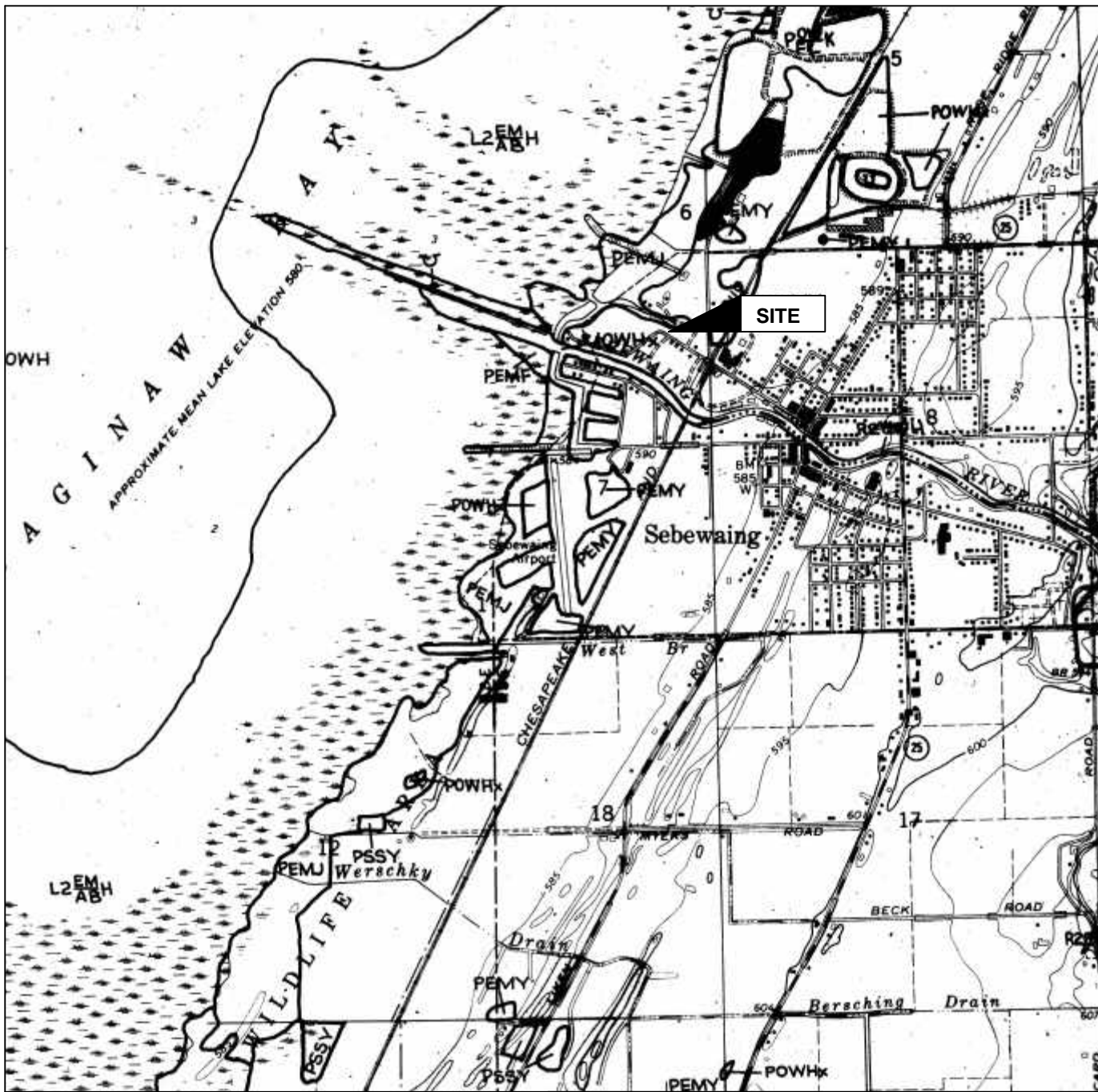
SCALE: 1:6,000

DRAWN BY
SD

CHECKED BY
AL

FIGURE
5

DATE: JULY, 2002



Legend

- PEMF – Palustrine, Emergent, Semipermanently Flooded
- PEMJ – Palustrine, Emergent, Intermittently Flooded
- PEMY – Palustrine, Emergent, Saturated/Semipermanent/Seasonal
- POWHx – Palustrine, Open Water, Permanently Flooded, Excavated
- PSSY – Palustrine, Scrub-Shrub, Saturated/Semipermanent/Seasonal
- L2(EM/AB)H – Lacustrine, Littoral, Emergent and Aquatic Bed, Permanently Flooded

NATIONAL WETLAND INVENTORY MAP

Sebewaing

**FEMA-DR-1346-MI
Sebewaing River Intercounty
Drainage Board**

SCALE: 1:24,000

DRAWN BY
SD

CHECKED BY
AL

Dewberry-Goodkind, Inc.

A Dewberry Company
Consulting Engineers
299 Webro Road
Parsippany, NJ 07054
Phone (973) 428-4909

FIGURE

6

DATE: AUGUST, 2002

Source: National Wetland Inventory Map, Sebewaing, Michigan, 1978.

LIST OF PHOTOGRAPHS

- | | |
|--------------|---|
| Photograph 1 | Residential home near the subject site. |
| Photograph 2 | View of the vacant forested land north of the subject site. |
| Photograph 3 | Existing drainage channel facing south. |
| Photograph 4 | Marsh with Saginaw Bay in the background. |
| Photograph 5 | Site location for Alternative 3 – Alternative Floodway Location, looking south. |
| Photograph 6 | View east from the Union Street Bridge. |
| Photograph 7 | Looking west from the Union Street Bridge. |





Photograph 1: Residential home near the subject site.



Photograph 2: View of the vacant forested land north of the subject site.



Photograph 3: Existing drainage channel facing south.





Photograph 4: Marsh with Saginaw Bay in the background.



Photograph 5: Site location for Alternative 3 – Alternative Floodway Location, looking south.



Photograph 6: View east from the Union Street Bridge.





Photograph 7: Looking west from the Union Street Bridge.



To obtain copies of Agency Correspondence, please contact:

Janet Frey
URS Group, Inc.
200 Orchard Ridge Drive, Suite 101
Gaithersburg, MD 20878
(301) 258-9780



Dewberry-Goodkind, Inc.

A Dewberry Company

**Federal Emergency Management Agency
PUBLIC NOTICE**

**Notice of Availability of the Draft Environmental Assessment for the Sebewaing River
Emergency Floodway, Sebewaing River Intercounty Drainage Board, Huron and Tuscola
Counties, MI.**

FEMA-DR-1346-MI.

Interested persons are hereby notified that the Federal Emergency Management Agency (FEMA) is proposing to assist in the funding of flood mitigation measures in the Village of Sebewaing, Michigan. In accordance with the National Environmental Policy Act (NEPA) of 1969 and the implementing regulations of FEMA, an Environmental Assessment (EA) is being prepared to assess the potential impacts of the proposed action on the human and natural environment. This also provides public notice to invite public comments on the proposed project in accordance with Executive Order 11988, Floodplain Management, and Executive Order 11990, Protection of Wetlands. In addition, this notice and the draft EA provide information to the public on potential impacts to historic and cultural resources from the proposed undertaking, as outlined in the National Historic Preservation Act of 1966.

The EA evaluates alternatives that provide for compliance with applicable environmental laws. The alternatives to be evaluated include (1) No Action; (2) Old North Floodway Channel Improvements which would include reestablishment of the Old North Floodway Channel north of the Sebewaing River, construction of a weir at the channel entrance, and replacement of a culvert at the Union Street channel crossing with a steel truss bridge (Proposed Action), and (3) constructing a new floodway channel to the east of the Old North Floodway channel.

The draft Environmental Assessment is available for review between October 1 and October 31, 2003, at the locations and times indicated below:

Huron County Road Commission
South Hanselman St.
Bad Axe, MI 48413
7:00 a.m. to 3:30 p.m., M-F
989-269-6405 ext.103

Village of Sebewaing
108 West Main St.
Sebewaing, MI 48759
8:00 a.m. to 5:00 p.m., M-F
989-883-2150

Tuscola County Drain Commissioner's Office
440 N. State Street
Caro, MI 48723
8:00 a.m. to 12:00 & 1:00 pm to 4:30 p.m. M-F
989-672-3820

The draft Environmental Assessment is also available for review online at the FEMA website <http://www.fema.gov/ehp/docs.shtm>. Written comments regarding this environmental action should be received no later than 5 p.m. on October 31, 2003, by Jeanne Millin, Regional Environmental Officer, 536 South Clark, 6th Floor, Chicago, IL 60605-1521, or at Jeanne.Millin@dhs.gov. If no comments are received by the above deadline, the draft EA will be considered final and a Finding of No Significant Impact will be published by FEMA.

The public may request a copy of the final environmental documents from Jeanne Millin, Regional Environmental Officer, 536 South Clark, 6th Floor, Chicago, IL 60605-1521.



No public comments were received during the public review period.

