

ACTION ALTERNATE 2 PHOTOS – 955 CLAGUE ROAD



Plate 1. Overview of the proposed access road, facing north.



Plate 2. View taken from center of proposed equipment compound, facing north.



Plate 3. View taken from center of proposed equipment compound, facing east.



Plate 4. View taken from center of proposed equipment compound, facing south.



Plate 5: View of Alternative 3

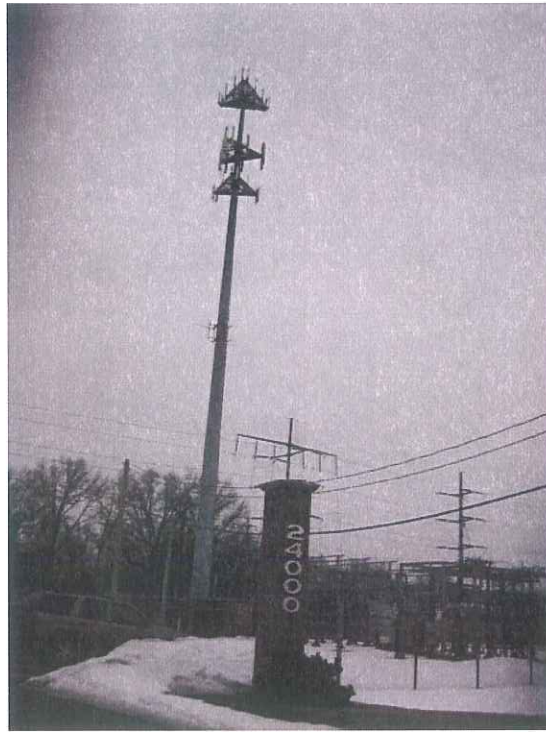


Plate 6: View of Alternative 3

Dismissed Sites for
Westlake, Cuyahoga County, Ohio



Plate 7: **Verizon CLE457 - Dismissed**
~190-foot monopole
41-28-35.8, 81-53-47.8
Sperry & Clague Roads, Westlake, Ohio

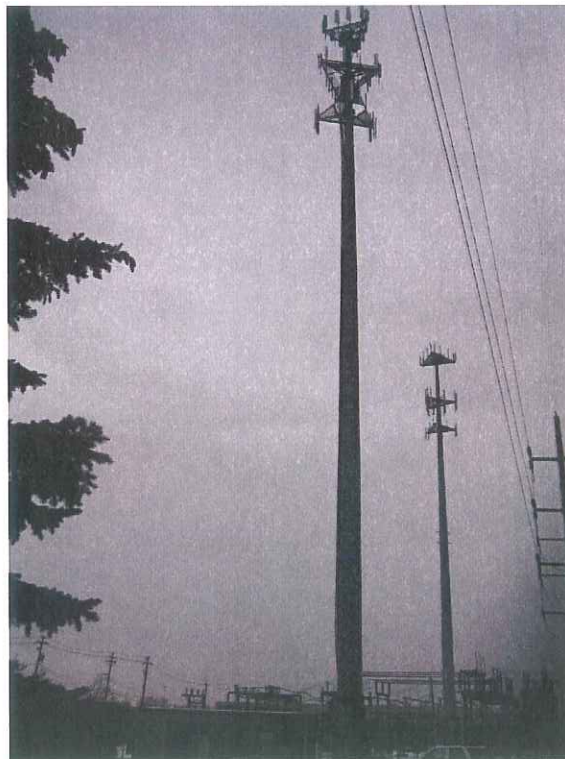


Plate 8: **Verizon CLE457 - Dismissed**
~190-foot monopole
41-28-35.8, 81-53-47.8
Sperry & Clague Roads, Westlake, Ohio

Dismissed Sites for
Westlake, Cuyahoga County, Ohio

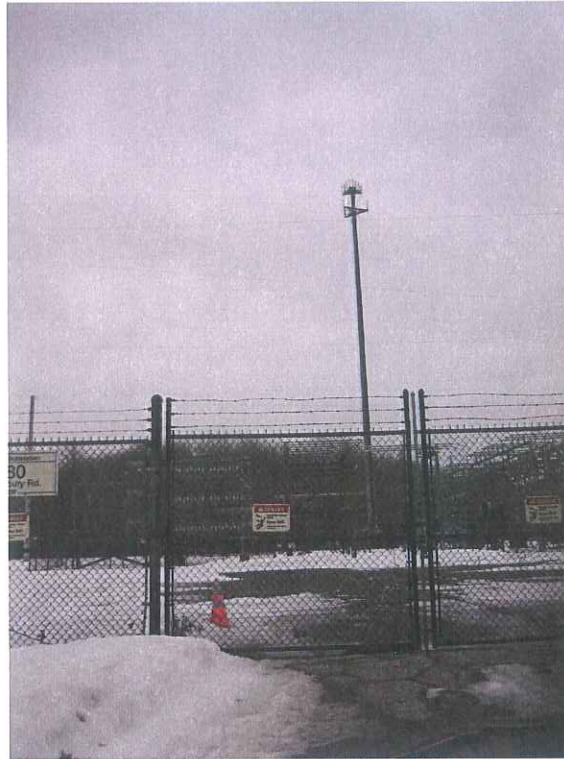


Plate 9: CEI Tower Site – Dismissed
41-28-35, 81-54-49 / ~195 feet
780 Canterbury Road, Westlake, Ohio