



*Freeport LNG L.P. (Cheniere 30% Limited Partner)



*Corpus Christi LNG L.P. (Cheniere 100%)

Cheniere Energy, Inc.

“U.S. LNG Imports Challenges, Opportunities, Strategies”

April 12, 2005



*Sabine Pass LNG L.P. (Cheniere 100%)



*Creole Trail LNG L.P. (Cheniere 100%)

Safe Harbor Act

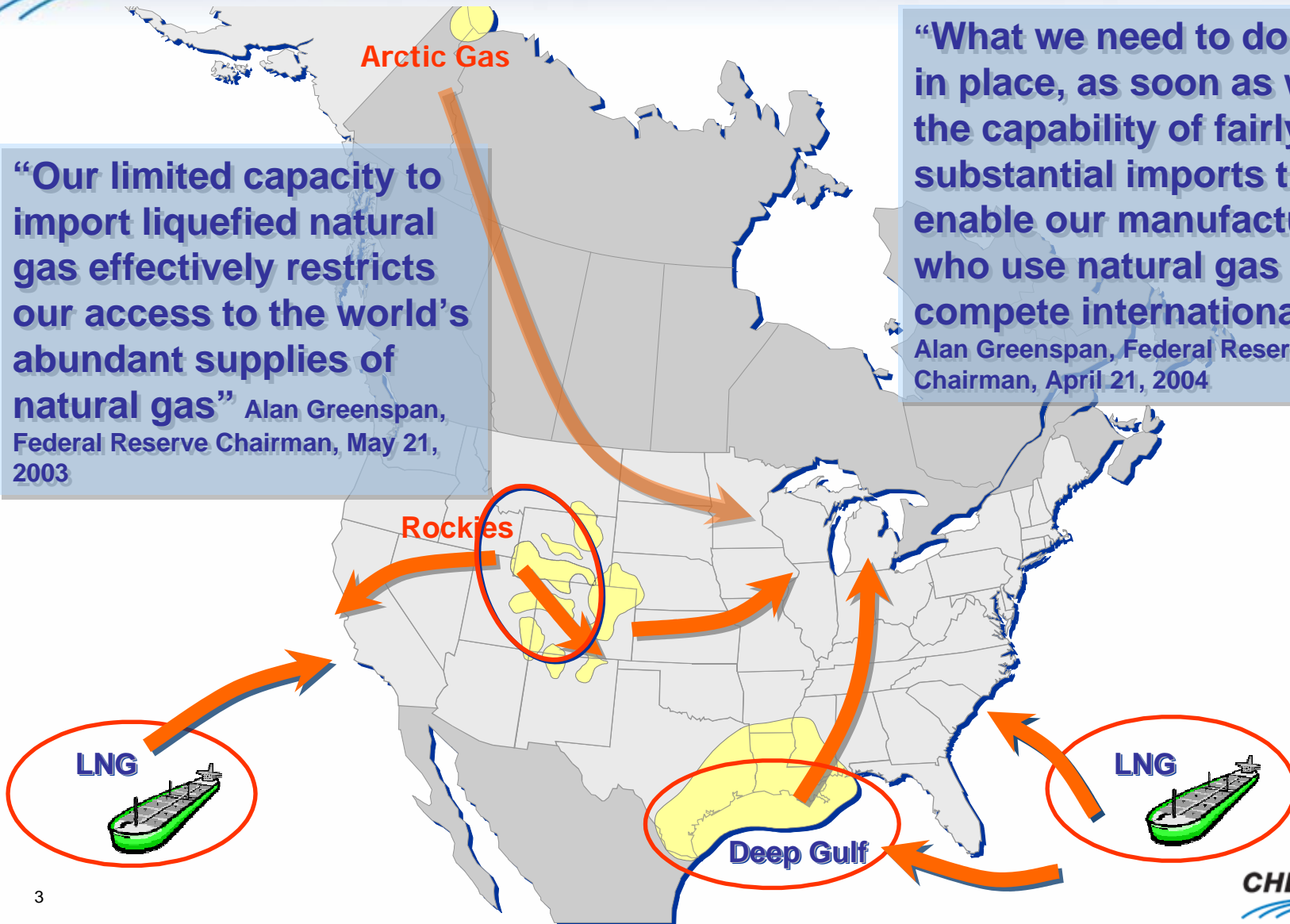
Safe Harbor Act Statement Under the Private Securities Litigation Reform Act of 1995: Certain information in this presentation are forward looking statements that are based on management's belief, as well as assumptions made by, and information currently available to management. While the company believes that its expectations are based upon reasonable assumptions, there can be no assurances that the company's financial goals will be realized. Numerous uncertainties and risk factors may affect the company's actual results and may cause results to differ materially from those expressed in forward-looking statements made by or on behalf of the company. These uncertainties and risk factors include political, economic, environmental and geological issues, including but not limited to, the continued need for additional capital, the competition within the oil and gas industry, the price of oil and gas, currency fluctuations, and other risks detailed from time to time in the company's periodic reports filed with the United States Securities and Exchange Commission.

New Supply Must Come from New Areas...

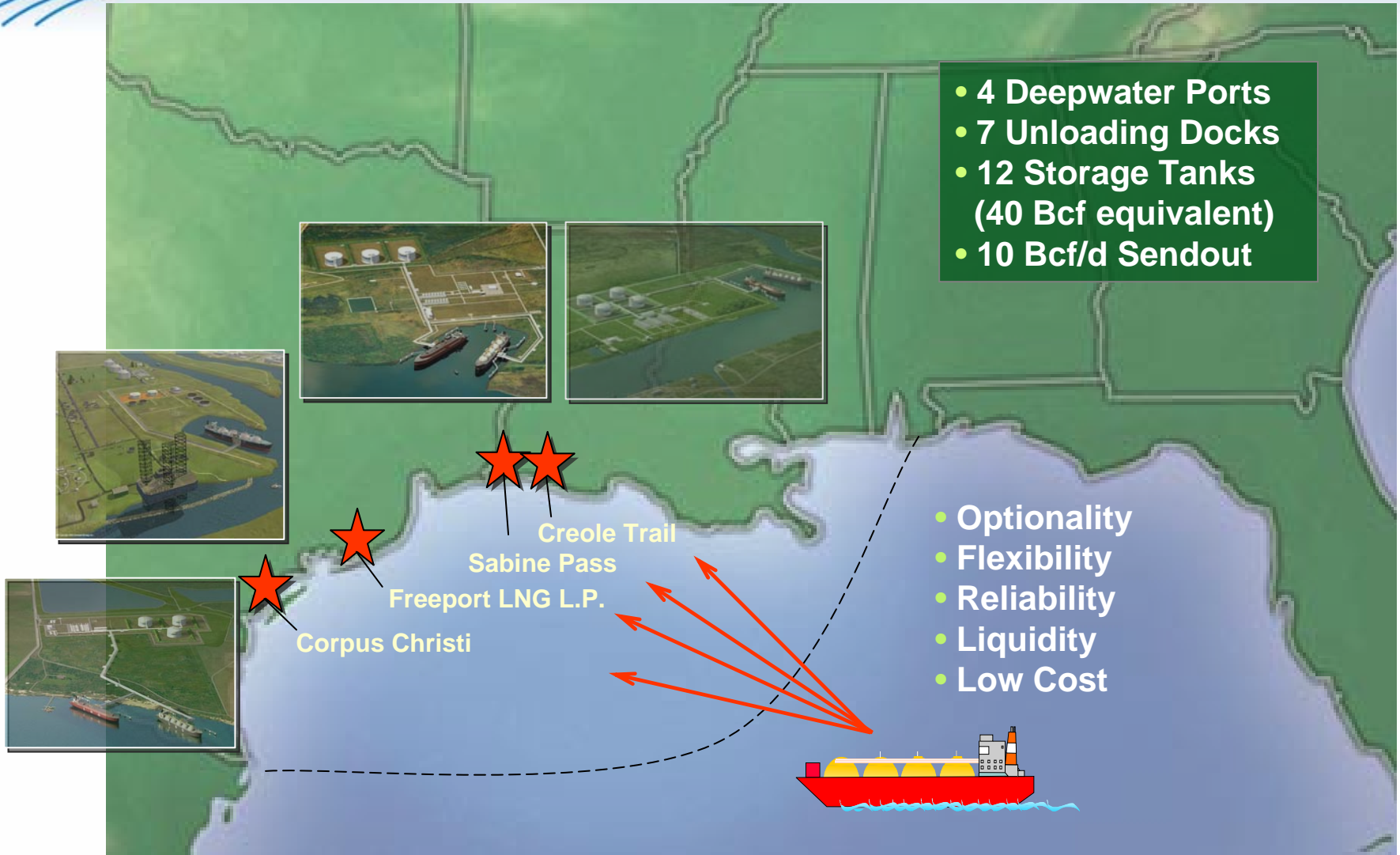
“Our limited capacity to import liquefied natural gas effectively restricts our access to the world’s abundant supplies of natural gas” Alan Greenspan, Federal Reserve Chairman, May 21, 2003

“What we need to do is get in place, as soon as we can, the capability of fairly substantial imports that enable our manufacturers who use natural gas to compete internationally.”

Alan Greenspan, Federal Reserve Chairman, April 21, 2004

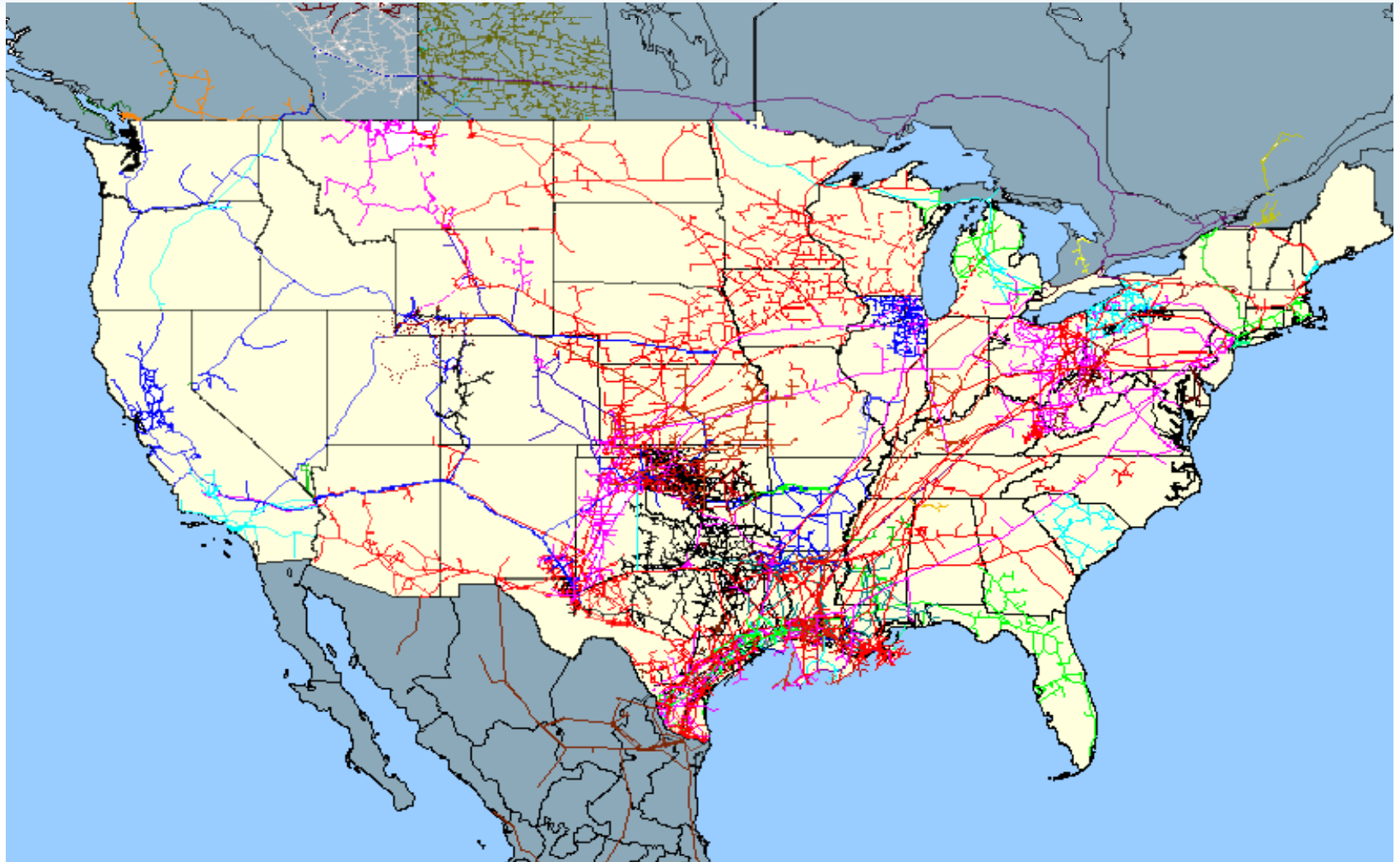


Cheniere LNG Receipt Network



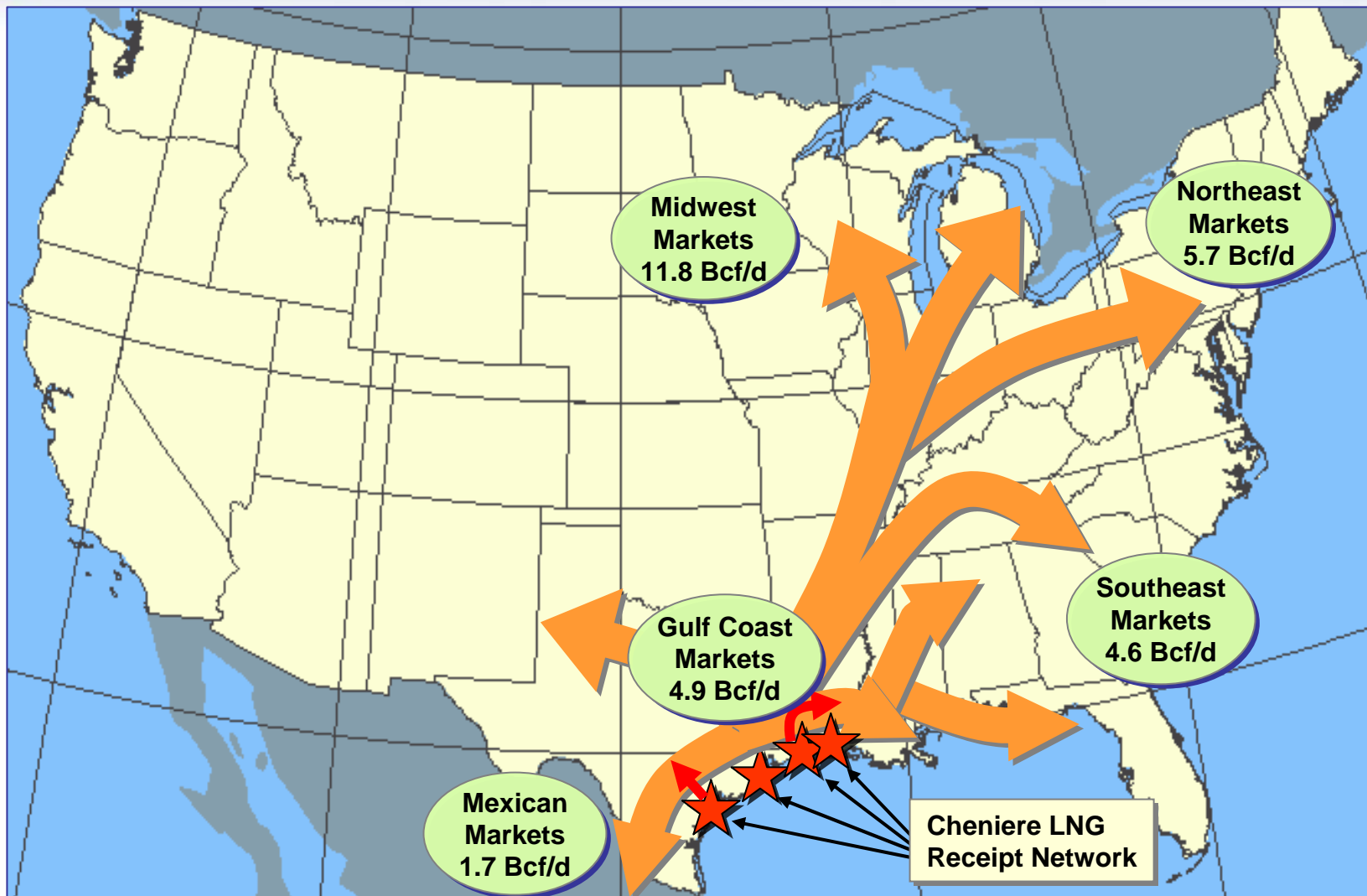
US Gas Pipeline System

Gulf Coast-centered transmission system reaches all US markets



Target Gas Demand Corridor

Market Access – 29 Bcf/d



Source: Cheniere Research

Early Mover Advantage Captures Best Sites

- **Freeport**
 - Only workable site on channel
 - Houston Ship Channel pricing
- **Sabine Pass**
 - Large, remote site
 - No directly affected population
 - Strong local and state support
- **Corpus Christi**
 - Industrial brownfield site
 - Support from environmentalists
- **Creole Trail**
 - Large, remote site
 - No directly affected population
 - Duplicates highly successful Sabine Pass terminal



Freeport LNG Terminal



Sabine Pass LNG Terminal



Corpus Christi LNG Terminal



Creole Trail LNG Terminal

Key Development Factors

- Gulf coast: local and national market access, existing pipeline infrastructure
- Low cost regas provider
 - Large sites: able to build within existing U.S. safety code
 - Large terminals for economies of scale
- Conventional technology: tried and proven for safety and reliability
- Community support emphasized: earned through cooperative interaction and environmental sensitivity

Local Support

EDITORIALS

LNG terminals could safely be productive asset

Southwest Texas State University

LNG Terminal gets strong support here

By CYNDI SELLERS

An enthusiastic crowd of over 200 interested citizens packed the Johnson's Bayou Recreation Center on Thursday, March 11, to participate in the Federal Energy Regulatory Commission Pass LNG Sabine Pass hearing on the proposed terminal. The purpose of the hearing was to take public comment on the environmental impact of the project. Impact on the environment, order of construction, and public comment were the main topics of discussion. Public comment was from Cameron Parish and Calcasieu Parish. Port Arthur, and other officials and citizens were speaking in support of the project. The following information was provided by Cheniere Energy on the LNG terminal project at Sabine Pass. What is LNG? Liquefied Natural Gas (LNG) is natural gas that has been super-cooled to -260°F. This process changes the gas to a liquid and reduces its volume 600 times.

How is it transported? Special LNG tankers are the ones that pass the water on the way to the terminal. Cheniere Energy, through its subsidiary, Sabine Pass LNG, will build a secure job for those who live and work in our community. Nat Griffith, representing Waterworks District 10, said "hopefully it will provide jobs and job security for more than 120 employees in the industry today in all the ripple effect. Sabine Pass, could mean as much as \$2.3 billion to the state's economy. Cheniere Chairman Charif Souki said the company is excited about the governor's eagerness to make the project happen. Cheniere said that it hopes to begin construction of the terminal by the end of year, with operations to begin by winter 2007, Souki said.

JOHNSON BAYOU, LA.

Parish opens arms to LNG plant

By DAN WALLACE

JOHNSON BAYOU, La. — Cheniere Energy's proposed liquefied natural gas terminal on the Johnson's Bayou in Cameron Parish has brought an "overwhelming" response from the local community, according to a report by the parish president. The report, which was presented to the parish council on Tuesday, said that the project has received "overwhelming" support from the local community. The parish president, Michael Taylor, said that the project is "a very positive situation for a very positive future." The parish council is expected to vote on the project in the coming weeks.

READERS WRITE

New gas plants will be boon for economy

I have read recently all of the comments regarding the proposed liquefied petroleum gas plants in this (and other) areas. Let me tell you a story, going back some 62 years.

After the Japanese cut off our natural rubber supply in the Far East, our U.S. government began building synthetic rubber plants as well as plants to produce raw materials. These plants were a boon to employment for thousands of unemployed men and women throughout America. They did not have the safety features that have developed in the last 20 years.

Cheniere plant backers pack meeting

Environmental topic of meeting rarely comes up; regional leaders turn out, show support

By ALISON ZELENBACH

Only supporters attended the first Federal Energy Regulatory Commission public meeting on Cheniere's proposed liquefied natural gas plant. About 150 people gathered Wednesday night at the Portland Community Center for the meeting, which was intended to consider the project's potential environmental impact. "This is not a hearing on the merits of the project," Cheniere Project Manager Paul Friedman said. "It is a public meeting to discuss the creation of a turning basin." Paul Clore, Gregory Portland Independent School District superintendent, said the project will create jobs in our state, but will keep jobs here.

Register to comment

Register to submit public comments regarding the environmental effects of Cheniere's proposed liquefied natural gas plant at: <http://www.ferc.gov/docs/filing/efiling.asp>

LNG Questions & Answers

The following information was provided by Cheniere Energy on the LNG terminal project at Sabine Pass. What is LNG? Liquefied Natural Gas (LNG) is natural gas that has been super-cooled to -260°F. This process changes the gas to a liquid and reduces its volume 600 times.

How is it transported? Special LNG tankers are the ones that pass the water on the way to the terminal. Cheniere Energy, through its subsidiary, Sabine Pass LNG, will build a secure job for those who live and work in our community. Nat Griffith, representing Waterworks District 10, said "hopefully it will provide jobs and job security for more than 120 employees in the industry today in all the ripple effect. Sabine Pass, could mean as much as \$2.3 billion to the state's economy. Cheniere Chairman Charif Souki said the company is excited about the governor's eagerness to make the project happen. Cheniere said that it hopes to begin construction of the terminal by the end of year, with operations to begin by winter 2007, Souki said.

Blanco endorses Cheniere Energy Sabine Pass

Louis Rom

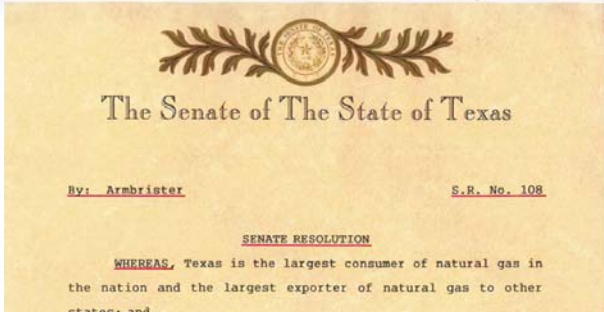
LAFAYETTE — Gov. Kathleen Blanco, attending an oil and gas conference Monday in Houston, threw her support behind a plan that would reportedly bring more than 120 jobs to southwest Louisiana. The Sabine Pass Liquefied Natural Gas Receiving Terminal along the Texas border, if completed according to plan, would be the largest receiving terminal in the country, importing more than 2.6 billion cubic feet per day of LNG. Blanco, speaking at the annual Offshore Technology Conference, said she is "committed to ensuring access to economic, safe and environmentally friendly energy supplies that will not only create jobs in our state, but will keep jobs here." About 1 percent of the country's natural gas supply is liquefied natural gas, a figure that experts say could triple by 2020. Blanco has asked all state agencies and the federal government to support the project and work with Cheniere Energy to expedite permitting for the project. Cheniere and its contractors are expected to employ more than 600 people during construction of the project, which will create more than 120 direct and indirect jobs when it opens. But the long-term impact could be much greater, Blanco said, citing a recent study by LSU's Center for Energy Studies. The report, "Economic Opportunities for Offshore Development in Louisiana," concluded that development of a liquefied natural gas infrastructure in the state could mean 13,000 new jobs and job security for more than 11,000 employees in the industry today in all the ripple effect. Sabine Pass, could mean as much as \$2.3 billion to the state's economy. Cheniere Chairman Charif Souki said the company is excited about the governor's eagerness to make the project happen. Cheniere said that it hopes to begin construction of the terminal by the end of year, with operations to begin by winter 2007, Souki said.



Gov. Kathleen Blanco

KIEFER
Beaumont

State Support



The sooner this facility can be permitted, the sooner Louisiana and the rest of the nation will be able to enjoy the important economic advantages this facility will offer.

I am told that the earliest possible date that FERC could issue permits for the Sabine Pass LNG facility is in the final months of 2004. I respectfully ask that you give full consideration, within federal guidelines, to accelerating the permitting process for this facility. The sooner this facility can be permitted, the sooner Louisiana and the rest of the nation will be able to enjoy the important economic advantages this facility will offer.

Should you need any additional information on this matter please contact my policy advisor on natural resources, Scott Kirkpatrick. He will follow-up with you on this correspondence. Thank you for your attention and assistance.

Sincerely,
Kathleen B. Blanco
Kathleen Babineux Blanco
Governor

kdb

c: Cheniere Energy, Inc ✓
Norm Mead Brownell
Joseph T. Kelliber
Sudon G. Kelly
Scott Kirkpatrick



Federal Support

RON PAUL
 REPRESENTATIVE, TEXAS
 FINANCIAL SERVICES COMMITTEE
 SUBCOMMITTEES:
 VICE CHAIRMAN
 CHEMISTRY AND INVESTIGATIONS
 DOMESTIC AND INTERNATIONAL
 MONETARY POLICY, TRADE AND TECHNOLOGY
 INTERNATIONAL RELATIONS
 COMMITTEE
 SUBCOMMITTEES:
 ASIA AND THE PACIFIC
 WESTERN HEMISPHERE
 JOINT ECONOMIC COMMITTEE
 Congress of the United States
 House of Representatives
 Washington, DC 20515-4314
 June 9, 2004

The Honorable Patrick Henry Wood III
 Chairman
 Federal Energy Regulatory Commission
 888 1st Street, NE
 Washington, DC 20426

RE: Docket Number CP04-37-000 Corpus Christi, Texas
 Docket Number CP03-75-000 Freeport, Texas

Dear Chairman Wood:

We write today to express our support for your expeditious review of those applications pending before the Federal Energy Regulatory Commission for the siting, construction, and operation of new liquefied natural gas (LNG) receiving terminals. Specifically, two such applications in Texas fit these criteria, and we write in support of the proposed projects by Cheniere in Freeport and Corpus Christi, Texas that enjoy broad community support.

As you are well aware, current and projected demand for natural gas continues to outstrip the available supply in this country, and the For Texas consumers and industrial use. Unfortunately, this problem will only get worse as the Information Administration forecasts in 2025.

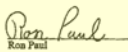
The two projects combined represent a communities, with the capacity of 4.1 bcf and other industrial sectors depend on a marketplace. As gas prices have increased, more pressure on employers. The potential through these two projects will help us broadly for the nation, the increased supply can reach much of the country through

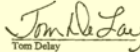
Again, thank you for your consideration receiving terminal applications (CP04-

Page # 2

Freeport, Texas so construction can move forward quickly.

Sincerely,


 Ron Paul


 Tom DeLay


 Solomon Ortiz


 Ruben Hinojosa

cc: Ms. Nora Mead Brownell, Commissioner
 Mr. Joseph T. Kelliher, Commissioner
 Ms. Soledad G. Kelly, Commissioner

FINANCIAL SERVICES COMMITTEE
 SUBCOMMITTEES:
 VICE CHAIRMAN
 CHEMISTRY AND INVESTIGATIONS
 DOMESTIC AND INTERNATIONAL
 MONETARY POLICY, TRADE AND TECHNOLOGY
 INTERNATIONAL RELATIONS
 COMMITTEE
 SUBCOMMITTEES:
 ASIA AND THE PACIFIC
 WESTERN HEMISPHERE
 JOINT ECONOMIC COMMITTEE

Congress of the United States
 House of Representatives
 Washington, DC 20515-4314

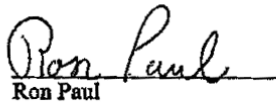
June 9, 2004

The Honorable Patrick Henry Wood III
 Chairman
 Federal Energy Regulatory Commission
 888 1st Street, NE
 Washington, DC 20426

RE: Docket Number CP04-37-000 Corpus Christi, Texas
 Docket Number CP03-75-000 Freeport, Texas

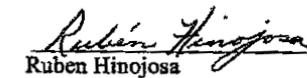
Dear Chairman Wood:

Sincerely,

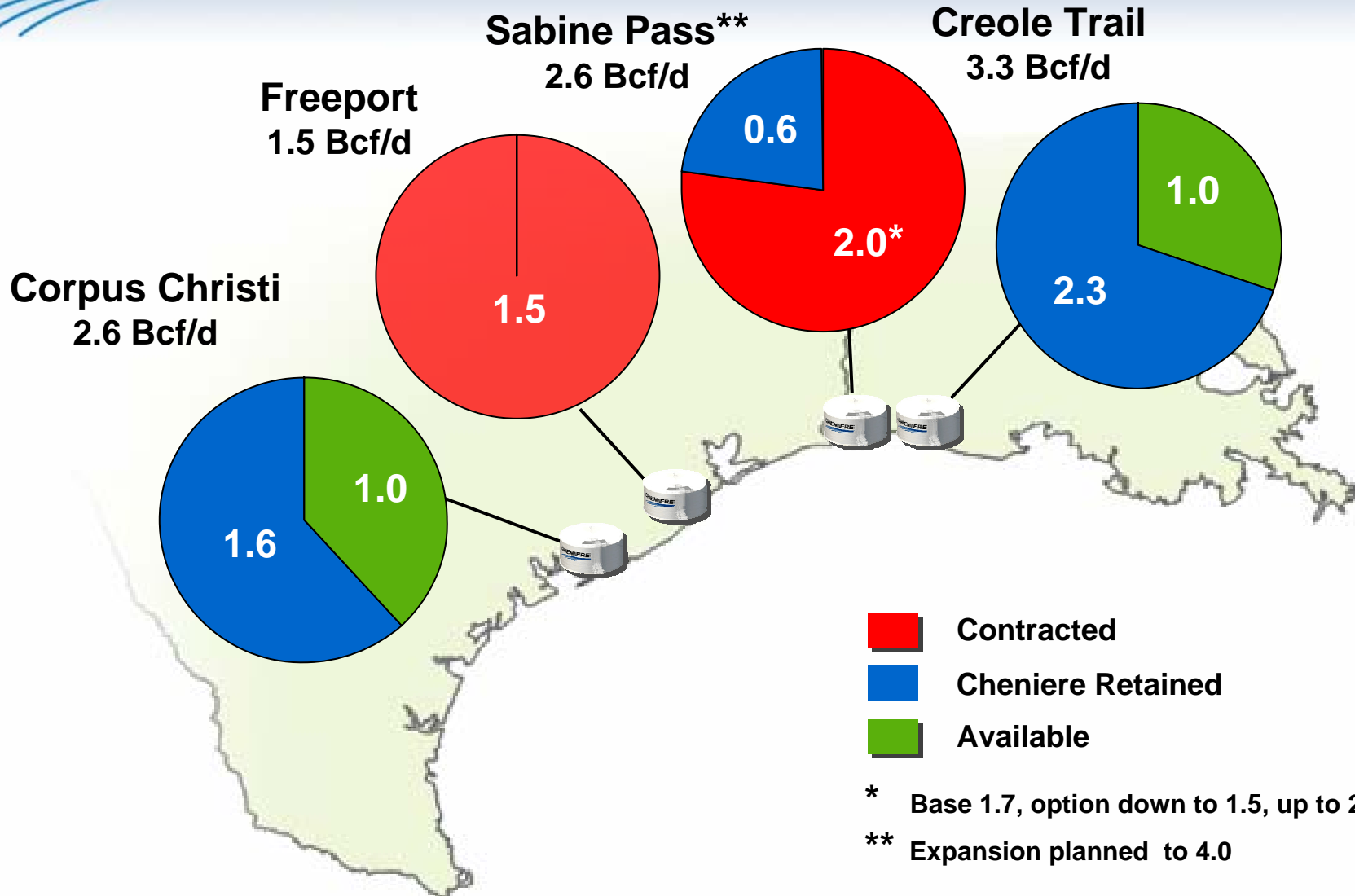

 Ron Paul


 Tom DeLay


 Solomon Ortiz


 Ruben Hinojosa

Marketing Status



Project Overviews

	Freeport LNG**	Sabine Pass	Corpus Christi	Creole Trail
Capex*	\$650 – \$750 million	\$750 – \$850 million	\$650 - \$750 million	\$850 - \$950 million
Initial Capacity	1.5 Bcf/d	2.6 Bcf/d	2.6 Bcf/d	3.3 Bcf/d
Storage Capacity	6.7 Bcfe	10.1 Bcfe	10.1 Bcfe	13.5 Bcfe
Berths	1 dock	2 docks	2 docks	2 docks
Tanks	2 tanks	3 tanks	3 tanks	4 tanks
Land	233 acres	838 acres	610 acres	1463 acres
FERC Permit	June 2004	December 2004	Expected Q2 2005	NEPA Pre-filing Jan 26, 2005
Estimated Ground Breaking	Q1 2005	Q1 2005	Q3 2005	Q3 2006

*Estimated construction costs before financing costs

**Freeport LNG L.P. (Cheniere 30% Limited Partner)

CHENIERE

