

Spatially Speaking

FGDC Monthly Update

VOLUME 1, ISSUE 4

AUGUST 2007

UPCOMING EVENTS

**45th Annual
URISA
Conference** Aug.
20—23

**Tribal College
Forum** Sept.
5—7

**GIS In the
Rockies
Conference** Sept
12—14

**NSGIC 2007
Annual
Conference** Sept
23—27

**ICMA Annual
Conference** Oct.
7—10

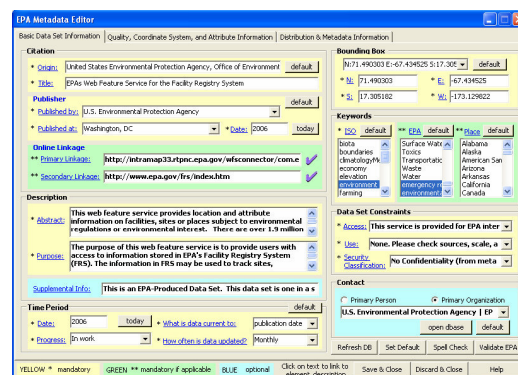
For more information on
FGDC events view the
calendar at:

<http://www.fgdc.gov/calendar>

EPA Metadata Editor v2.1 Wins First Place

In June 2007, the U.S. Environmental Protection Agency (EPA) released the EPA Metadata Editor Version 2.1 (EME v2.1). The EME v2.1 is a geospatial metadata editing tool that allows users to efficiently create and edit geospatial metadata records that meet EPA and Federal Geographic Data Committee (FGDC) requirements. The EME v2.1 provides a simple editing environment that integrates within the Environmental Systems Research Institute's (ESRI's) ArcGIS software. It allows metadata creators to utilize drop-down boxes and default buttons to easily populate a number of required fields. Information used to populate fields in the interface derives from a simple Microsoft Access database, making the defaults flexible and easily modifiable. Additionally, the design of the application easily identifies 'mandatory', 'mandatory if applicable', and 'optional' elements and allows quick access to the definitions of the elements through a standard help interface. The program also incorporates the use of a spell-checker and an EPA-validation web service that allows users to validate their records according to the EPA Geospatial Metadata Technical Specification Version 1.0 and FGDC Content Standard for Digital Geospatial Metadata (CSDGM) minimum requirements.

The EME v2.1 recently won first place for Embedded GIS Applications at the 2007 ESRI International User Conference User Applications Fair (see http://www.esri.com/events/uc/results/app_fair.html). It is available for download at <http://geodata.epa.gov/tools.html>. Two training sessions have been set up for July 25 and August 8. Please see the FGDC calendar for more details on the trainings. For more information, contact Michelle Torreano (torreano.michelle@epa.gov).



The EPA Metadata Editor Interface

View the FGDC website at: www.fgdc.gov

Highlights

"Spatially Speaking" is designed to provide updates on the activities of the FGDC. Subcommittees, workgroups, and other FGDC participants are urged to submit updates to Alison Dishman adishman@fgdc.gov by the 20th of each month.

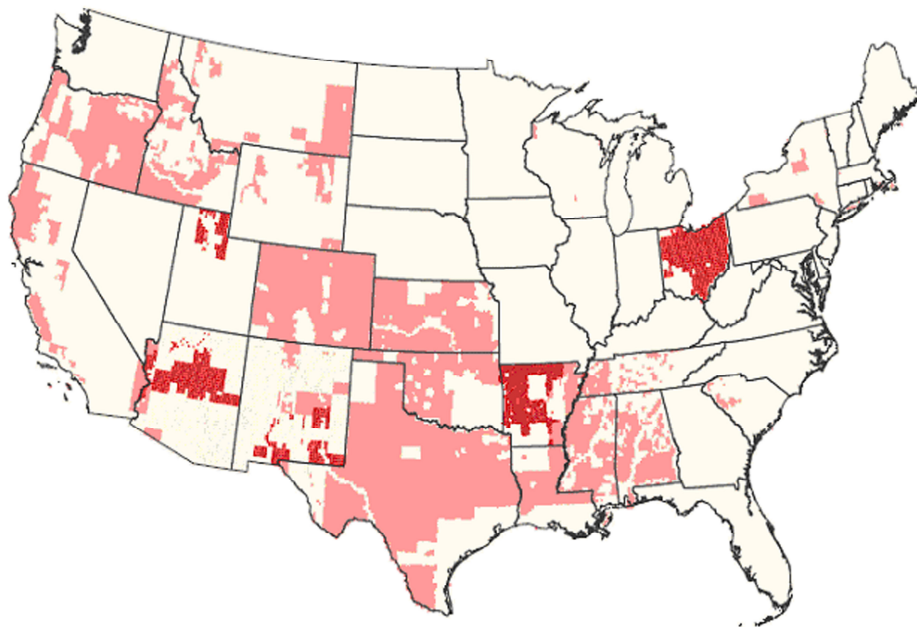
- **The Interagency Workgroup for Ocean and Coastal Mapping (IWG-OCM) is sponsoring an interagency technical workshop on September 11-13, 2007**, at the NOAA Coastal Services Center in Charleston SC. At this workshop, 25 to 30 participants will recommend a design for the Interagency Ocean and Coastal Mapping Inventory and a process for building it. The Interagency Ocean and Coastal Mapping Inventory will offer a clearinghouse for data and interpretive information, and a registry of completed and projected mapping activities, that will reduce duplication of efforts and enable cooperative activities. More information is on: <http://www.csc.noaa.gov/iwg/>
- **This summer will see the completion of the National Hydrography Dataset**, a five-year, fifty-million dollar project spearheaded by the USGS to provide 1:24,000-scale hydrography coverage of the nation. This was made possible by a partnership of over 30 government agencies that banded together to pool their resources into a single solution for scientists studying the nation's surface water. The seamless dataset is the hydrography component of The National Map and is available for free through The National Map <http://nationalmap.gov> or for more specialized access <http://nhd.usgs.gov>. Content is generally based on surface water features portrayed in the 7.5-minute topographic map series and has been updated in a number of states. Efforts are now underway to begin the stewardship of the NHD in which state and federal agencies upgrade and continuously maintain the data to meet their business needs. The NHD is characterized by the use of (1) a flow network, (2) linear referencing of events, (3) change management, (4) continuous maintenance through stewardship, and (5) seamless coverage. (Jeff Simley, jsimley@usgs.gov)
- **Moody K. "M.K." Miles, III, PE, LS, was presented with the first ever MAPPS Public Service Award** on Monday, June, 16, 2007 during the MAPPS Awards Banquet in Bretton Woods, NH. Miles is currently the Deputy Chief of Engineering and Construction, Civil Works Directorate, in the headquarters of the U.S. Army Corps of Engineers (HQUSACE) in Washington, DC. He has over 30 years of experience in Engineering and Construction at HQUSACE. "M.K. has been an exemplary member of the Corps' management and a great ambassador to MAPPS over his tenure. He has been one of the unwavering advocates within the Federal government in support of professionalism and quality in the delivery of geospatial services," said outgoing MAPPS President Kurt Allen (Photo Science, Inc., Bowie, MD).
- **DC receives 50 States CAP award.** In July, an additional award was made to the District of Columbia for 50 State Category from the FGDC CAP Program. (Milo Robinson, mrobinson@fgdc.gov)
- **The FGDC Steering Committee approved the establishment of a new National Geospatial Advisory Committee (NGAC)** to provide advice and recommendations to FGDC agencies regarding the NSDI, OMB Circular A-16, and Executive Order 12906. A Call for Nominations for NGAC membership was issued on May 14, 2007 for a period of 45 days. A total of 110 nominations were received from a broad cross-section of individuals and organizations involved in geospatial issues. An interagency review panel is evaluating the nominations and will make recommendations for committee membership to the DOI Office of the Secretary. The Secretary of the Interior will make the final decisions on committee membership appointments in September 2007. (John Mahoney, mahoney@usgs.gov)

Moving National Wetlands Maps to The Internet

The National Wetlands Inventory is embarking on a project to scan most existing hard-copy maps and provide them as georeferenced raster images through the Wetlands Mapper. <http://wetlandswms.er.usgs.gov/index.html>

Areas in **RED** on the map are currently available for viewing with other layers. They have been added to our web map service (WMS). This means users can now bring the raster data into ArcMap over the web. See instructions. <http://wetlandswms.er.usgs.gov/ESRI.html>

Areas in **PINK** are waiting to be scanned, with key funding provided by other agencies. Once provided online as georeferenced scanned images, any organization can partner with the Inventory to convert images to digital data.



Areas to be included in the NWI Wetlands Mapper

YOUR INFO HERE!

Showcase your geospatial activities, awards and collaborations in this e-newsletter.

Please send your text to Alison Dishman (adishman@fgdc.gov) by the 20th of the month.