



**Center for Bioenvironmental Research:**  
*A Trans-Disciplinary Science and Technology Model for  
Long-Term Stewardship of Contaminated Sites*

Douglas John Meffert, D. Env., MBA  
Center for Bioenvironmental Research  
Tulane and Xavier Universities  
[dmeffert@tulane.edu](mailto:dmeffert@tulane.edu)

*U.S. Department of Energy National Energy Technology Laboratory  
Industry Partnerships for Environmental Science and Technology Conference  
Morgantown, WV, October 17-19, 2000*



# CBR Physical Plant

Modern Buildings on 3 Campuses

- Health & Environmental Research
- Alcee Fortier
- Norman C. Francis Science Complex

Shared Facilities within Departments





# CBR Member Affiliations

2 Universities

Tulane University and Xavier University

3 Campuses

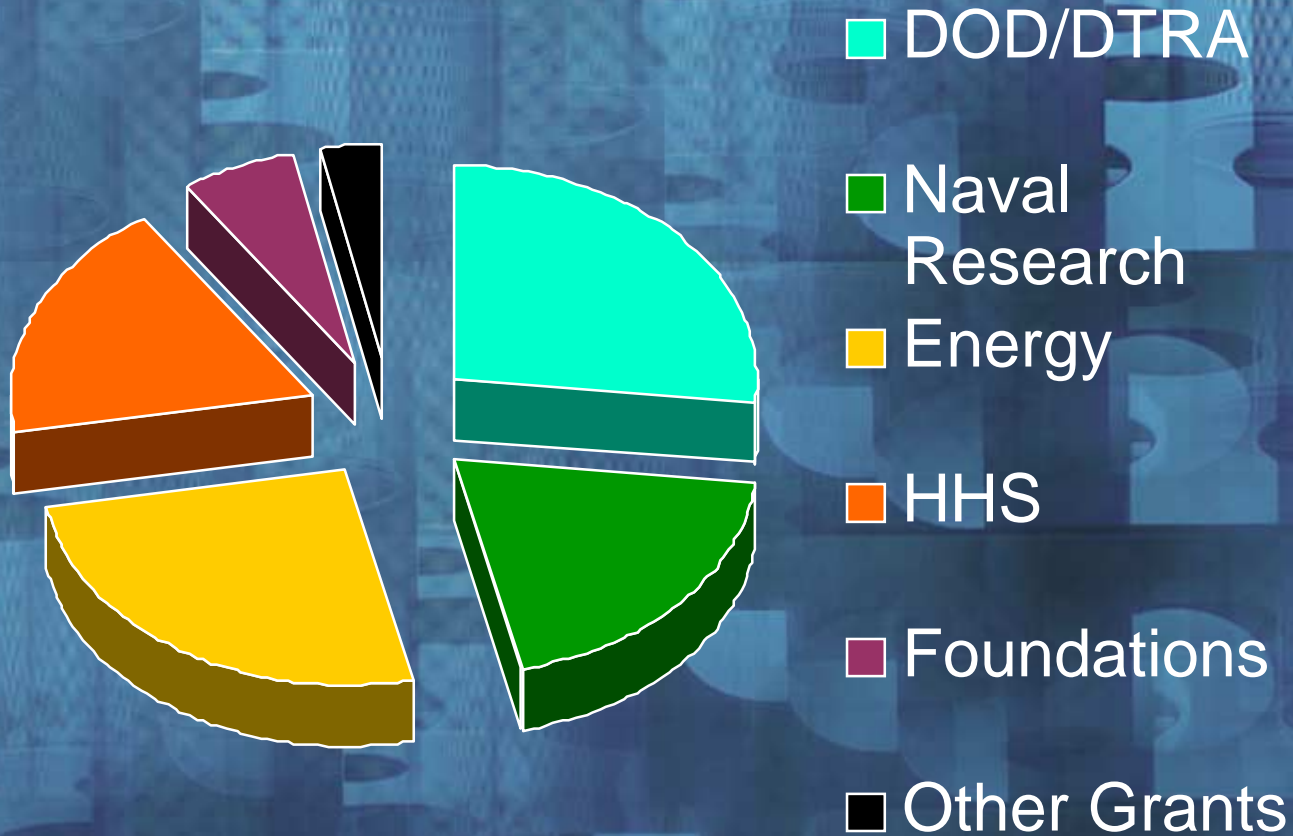
6 Schools

33 Departments

*U.S. Department of Energy National Energy Technology Laboratory  
Industry Partnerships for Environmental Science and Technology Conference  
Morgantown, WV, October 17-19, 2000*



# CBR Current Funding



*U.S. Department of Energy National Energy Technology Laboratory  
Industry Partnerships for Environmental Science and Technology Conference  
Morgantown, WV, October 17-19, 2000*



# CBR Current Themes



Signals - Human & Ecosystem Health



River - Water: A Global Resource



Communications & Technology



Environmental Education



Partnerships for Action

*U.S. Department of Energy National Energy Technology Laboratory  
Industry Partnerships for Environmental Science and Technology Conference  
Morgantown, WV, October 17-19, 2000*





# Environmental Signaling Research

- Endocrine disruptors
- Energy biosciences
- Integrated human & ecological risk
- Lab, clinic, and field studies
- Biosensors and biomarkers

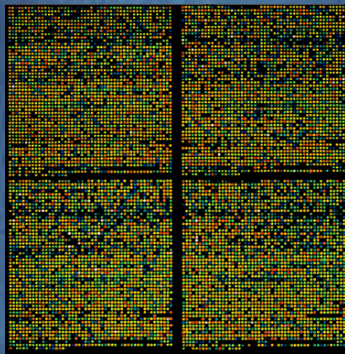
QuickTime™ and a  
Microsoft Video 1 decompressor  
are needed to see this picture.



# CBR Biosensors

## Cell-based

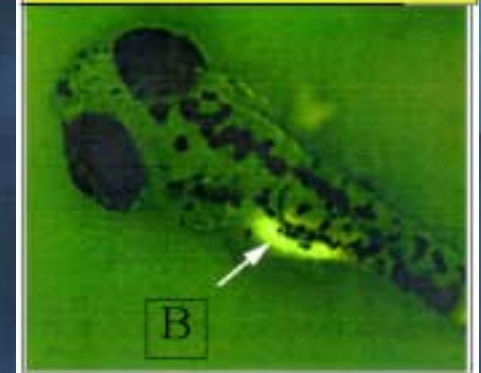
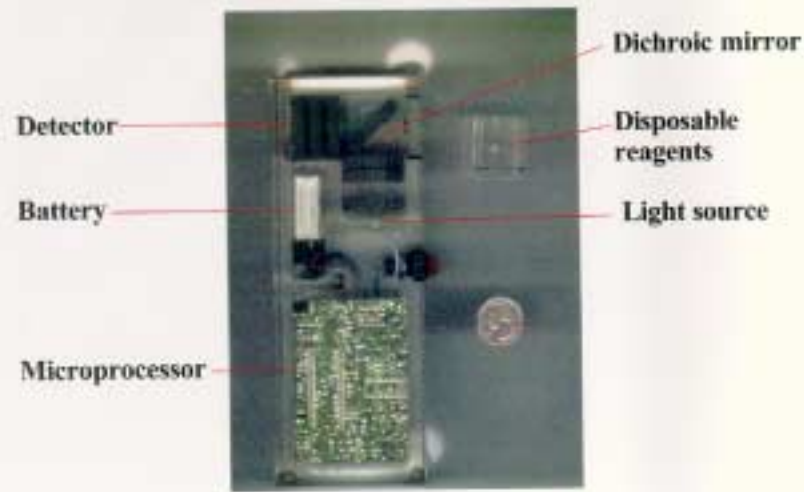
- mammalian
- bacteria



## Antibody-based

## Transgenic Organisms

### Transparent Mock-up of Portable Instrument







## Objectives for Long-Term Stewardship

- Help facilitate research agenda through partnerships
- Research for technology development and testing with a special focus on biomarkers and biosensors
- Risk analyses in coordination with DOE and stakeholders
- Research and risk communication

*U.S. Department of Energy National Energy Technology Laboratory  
Industry Partnerships for Environmental Science and Technology Conference  
Morgantown, WV, October 17-19, 2000*