

Demonstration of Mer-Cure™ Technology for Enhanced Mercury Control

(DOE Cooperative Agreement DE-FC26-07NT42776)

December 11, 2007

Shin G. Kang, Carl D. Edberg and Ed Rebula
Alstom Power Inc.
and
Pieri Noceti
DOE/NETL

POWER SYSTEMS |

ALSTOM

Outline

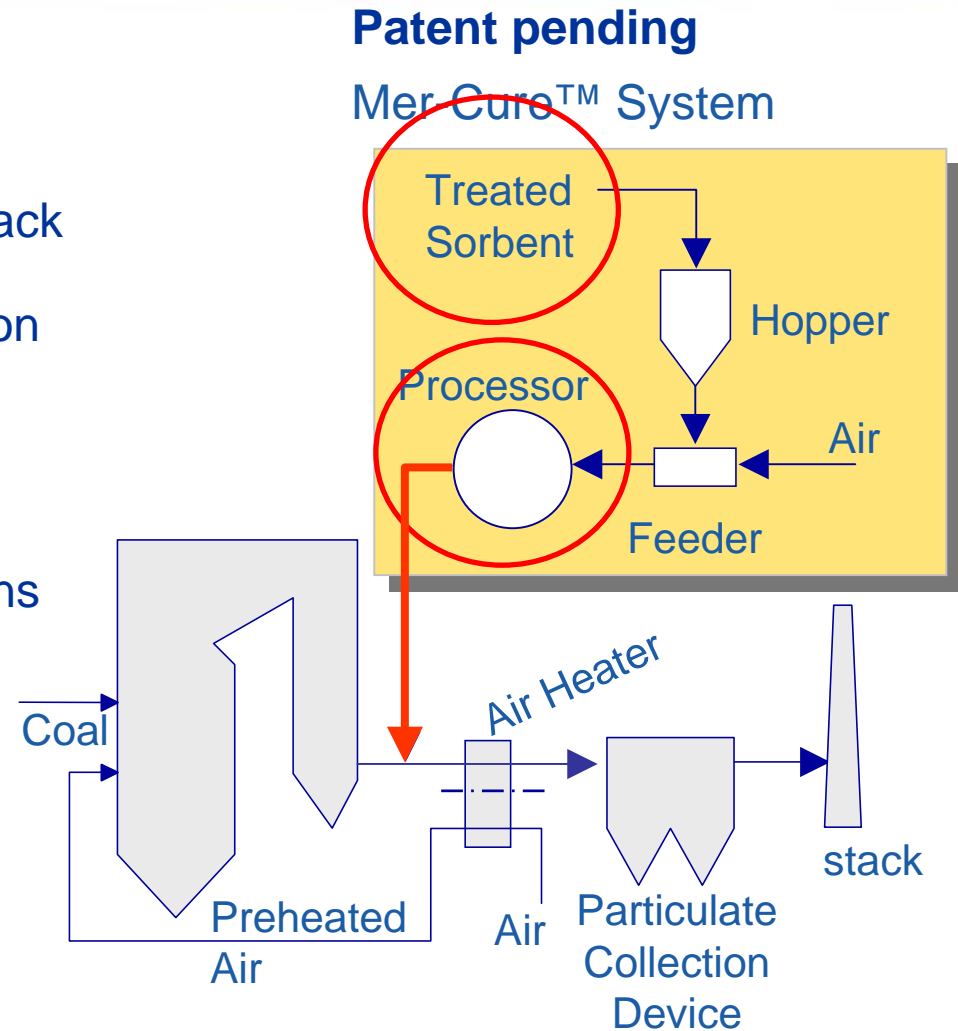
- Background
- ALSTOM Mer-Cure™ Technology
- Project Objectives and Plan
 - Budget Period 1 – LCRA short-term demo
 - Budget Period 2 – LCRA long-term, Reliant Energy demo
- Budget Period 1 Test Results from LCRA
 - Baseline measurements
 - Parametric testing
 - Ash evaluation
 - Balance of plant impact
- Summary
- Acknowledgements

Background

- No “one-size-fits-all” solution for mercury control
 - Each plant has its own unique opportunities/challenges
 - Fuel type, boiler operation, and backend configuration
 - System-wide control strategy
 - CAMR vs. state regulations
- ALSTOM has developed diverse mercury control options in order to meet unique challenges of customers
 - Coal additives for co-benefits
 - Activated Carbon Injection (ACI) + Baghouse installation
 - “Enhanced” sorbent injection – Mer-Cure™
- ALSTOM Mer-Cure™ technology development target
 - Easy retrofit solution for boilers (mainly with ESP only)
 - Low capital investment
 - Low operating cost
 - Removal efficiency greater than 90%

Mer-Cure™ System Architecture

1. Proprietary sorbent design
 - Accelerated oxidation/capture
 - Mitigate SO₃ impact/improved stack opacity
 - Prepared for high-temp application
2. On-line processing of sorbent
 - Uniform dispersion
 - Maximum surface area
 - Removed mass transfer limitations
3. Injection upstream air heaters
 - High temperature
 - Longer residence time
 - Above acid dew point
 - More internal duct area



Outline

- Background
- ALSTOM Mer-Cure™ Technology
- • Project Objectives and Plan
 - Budget Period 1 – LCRA short-term demo
 - Budget Period 2 – LCRA long-term, Reliant Energy demo
- Budget Period 1 Test Results from LCRA
 - Baseline measurements
 - Parametric testing
 - Ash evaluation
 - Balance of plant impact
- Summary
- Acknowledgements

Project Team

Department of Energy/NETL

Alstom Power Inc.

Lower Colorado River Authority

Reliant Energy

Envergex, LLC

UND EERC

Project Goals:

DOE Phase III:

- Full-scale demonstration of a mercury control technology capable of
 - 90% capture above baseline, i.e., uncontrolled mercury emissions;
 - At 50% or less of the baseline cost (\$50,000/lb Hg removed)
 - Various plant configurations
- Longer-term demonstration

LCRA:

- Allow continued ash utilization
 - Reduced consumption of sorbent due to co-benefit from FGD
 - New sorbent formulations

Reliant Energy:

- Reduce sorbent consumption under high SO₃ environment
 - SO₃-tolerant sorbent formulations

LCRA Fayette Unit 3

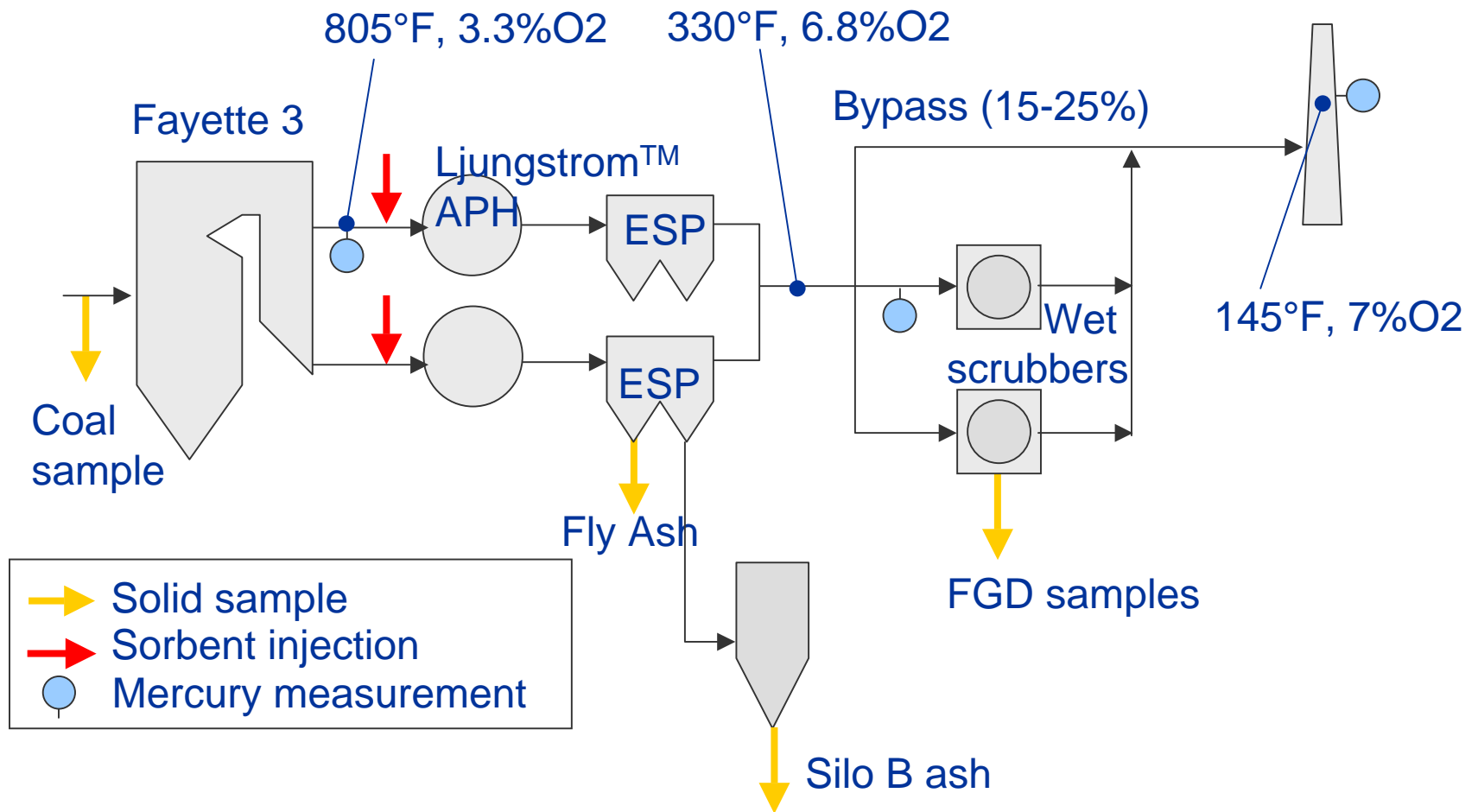


Utility	LCRA
Host site	Fayette Unit 3
Size (MW gross)	480
Location	La Grange, TX
Fuel	PRB blends
%S	0.6
%ash	7.6
ppm Cl	49
ppm Hg	0.09+/-0.02
Air heaters	Ljungstrom™
Particulate control	CS-ESP
SOx control	Wet FGD

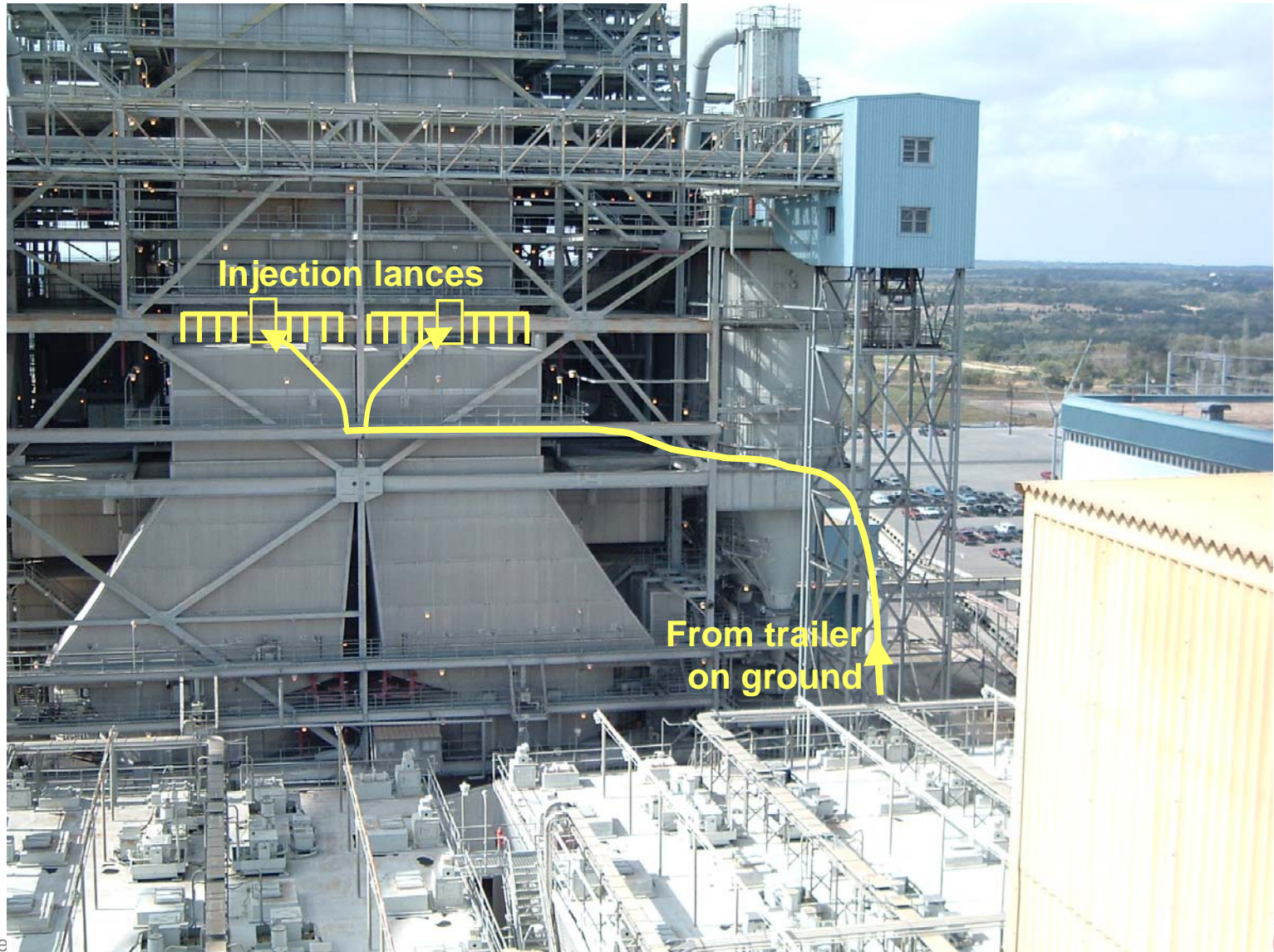
Test Plan (3/5/07 through 4/8/07)

Sun	Mon	Tue	Wed	Thu	Fri	Sat	
2/25	2/26	2/27	2/28	3/1	3/2	3/3	
3/4	Baseline mercury measurement (no injection of sorbents) Mer-Cure installation week			3/8	3/9	3/10	
3/11	Parametric testing (injection of various sorbents at several injection rates)					3/16	3/17
3/18	Ash evaluation starts (continuous injection of sorbents at a fixed lb/MMac for sampling of representative bulk ash)						3/24
	day 1 MerClean	day 2 MerClean	day 3 MerClean	day 4 MerClean	day 5 MerClean	day 6 MerClean	
3/25	day 1 eSorb 11	day 2 eSorb 11	day 3 eSorb 11	day 4 eSorb 11	day 5 eSorb 11	day 6 eSorb 11	
day 7 MerClean recovery, PM							
4/1	4/2	4/3	4/4	4/5	4/6	4/7	
forced outage							
4/8	Demobilize mobile u	Demobilize	Demobilize	Demobilize	Demobilize	4/14	
			scheduled outage starts				

Fayette 3 Plant and Sampling Layout



Mer-Cure™ Equipment Layout in Fayette 3



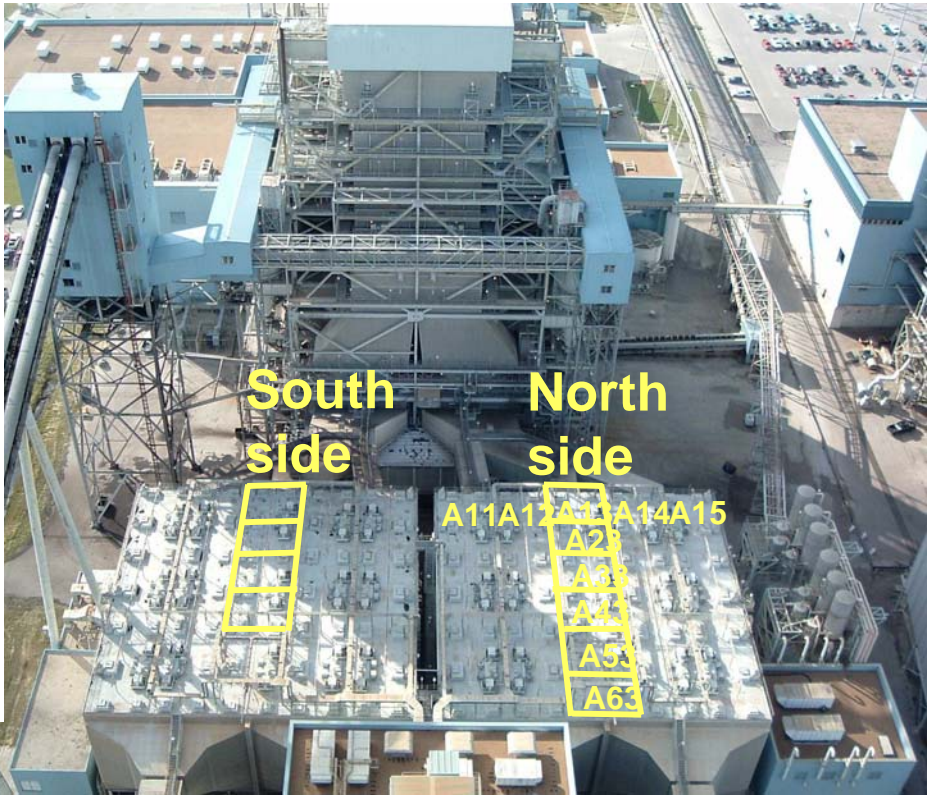
Injection Deck



DOE Phase III - P 12

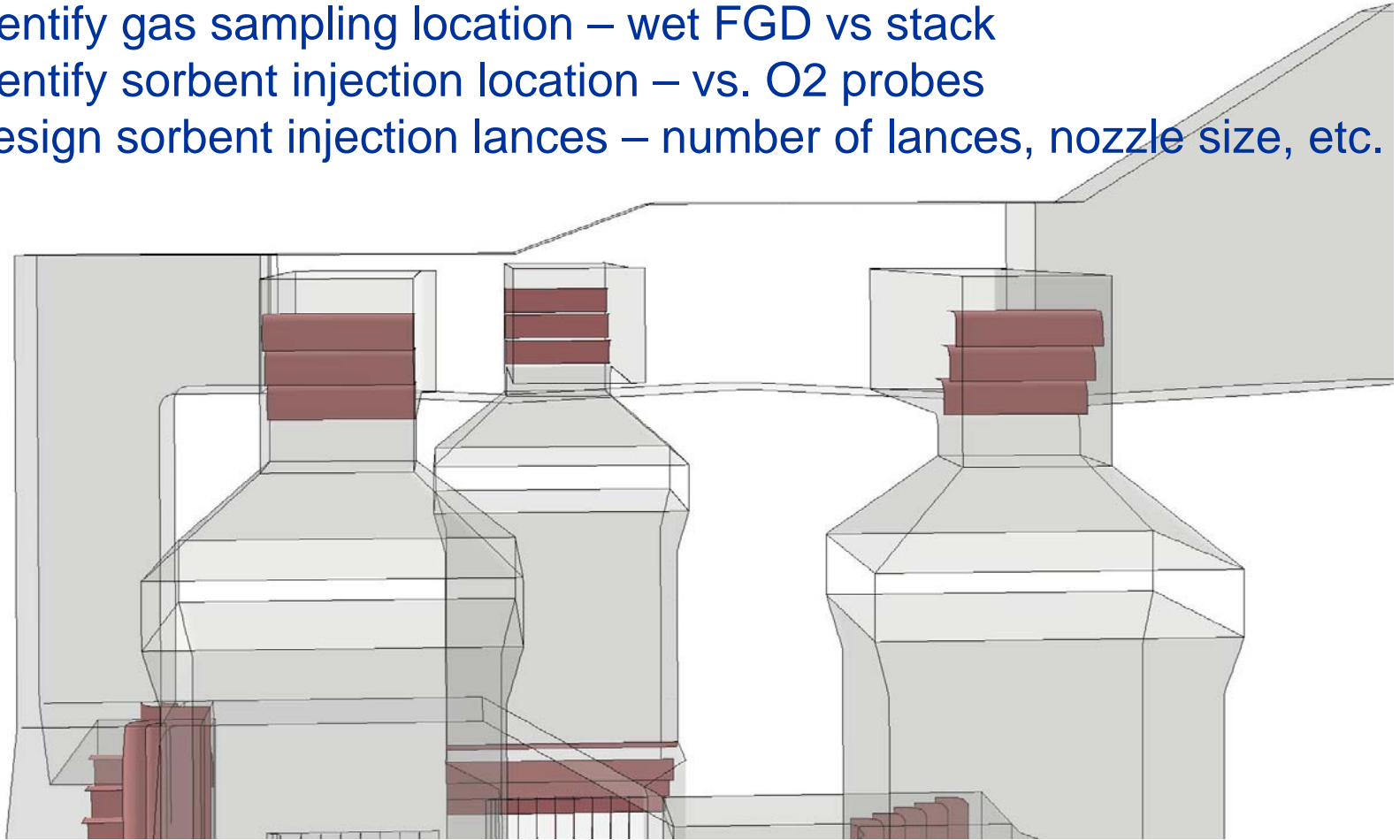


Solids Sampling Locations

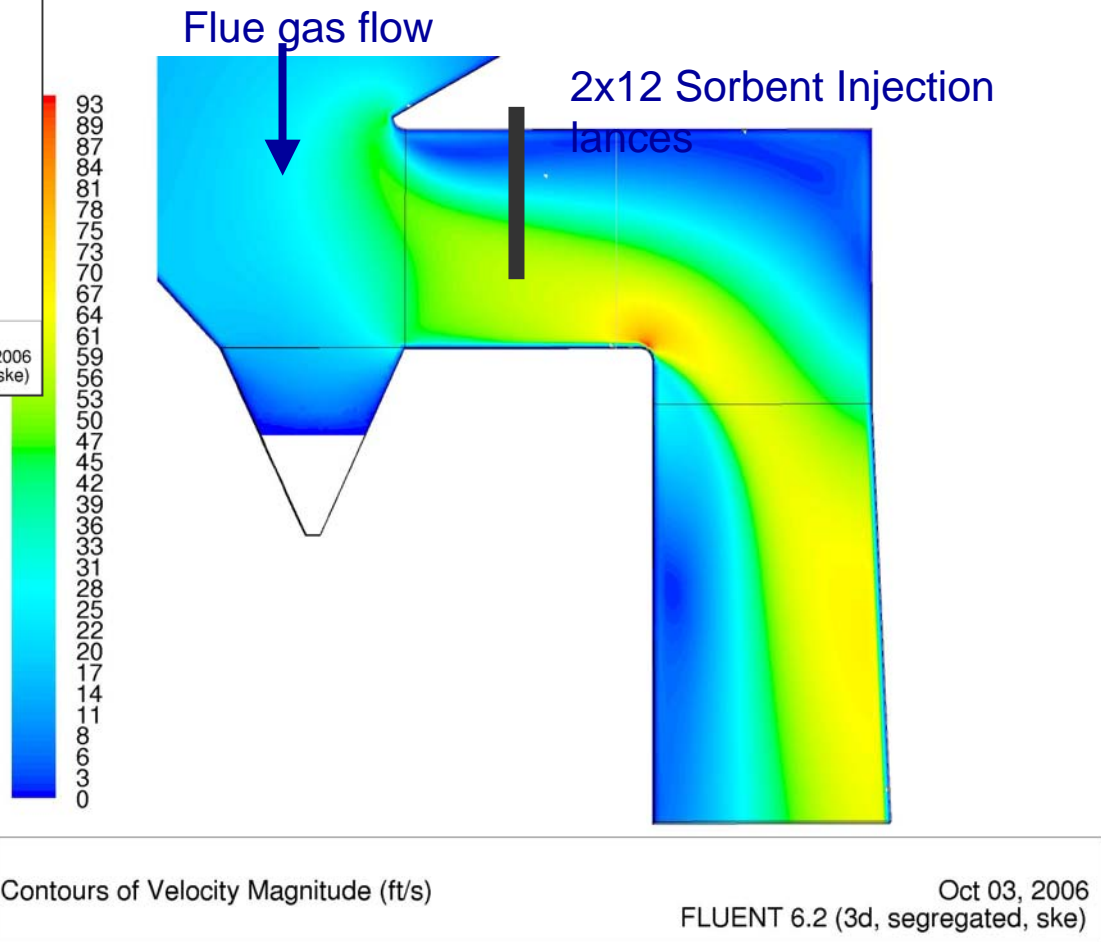
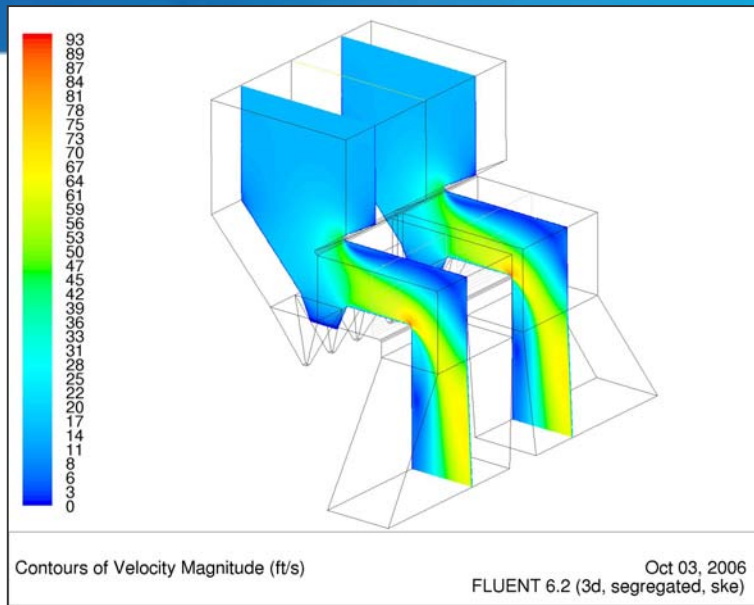


Computational Fluid Dynamics (CFD) Modeling

- Identify gas sampling location – wet FGD vs stack
- Identify sorbent injection location – vs. O₂ probes
- Design sorbent injection lances – number of lances, nozzle size, etc.



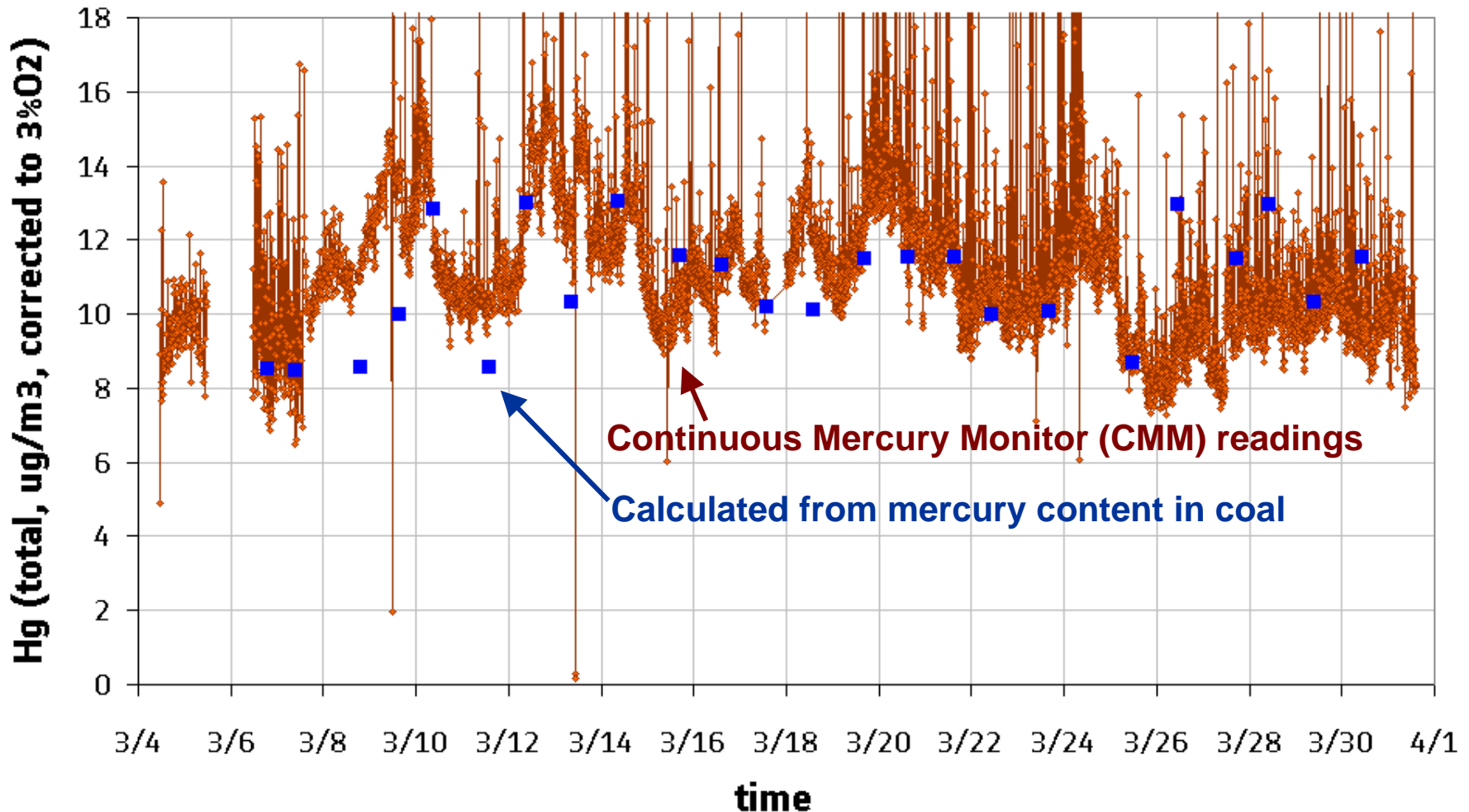
FPP3 Backpass CFD Study for Lance Design



Outline

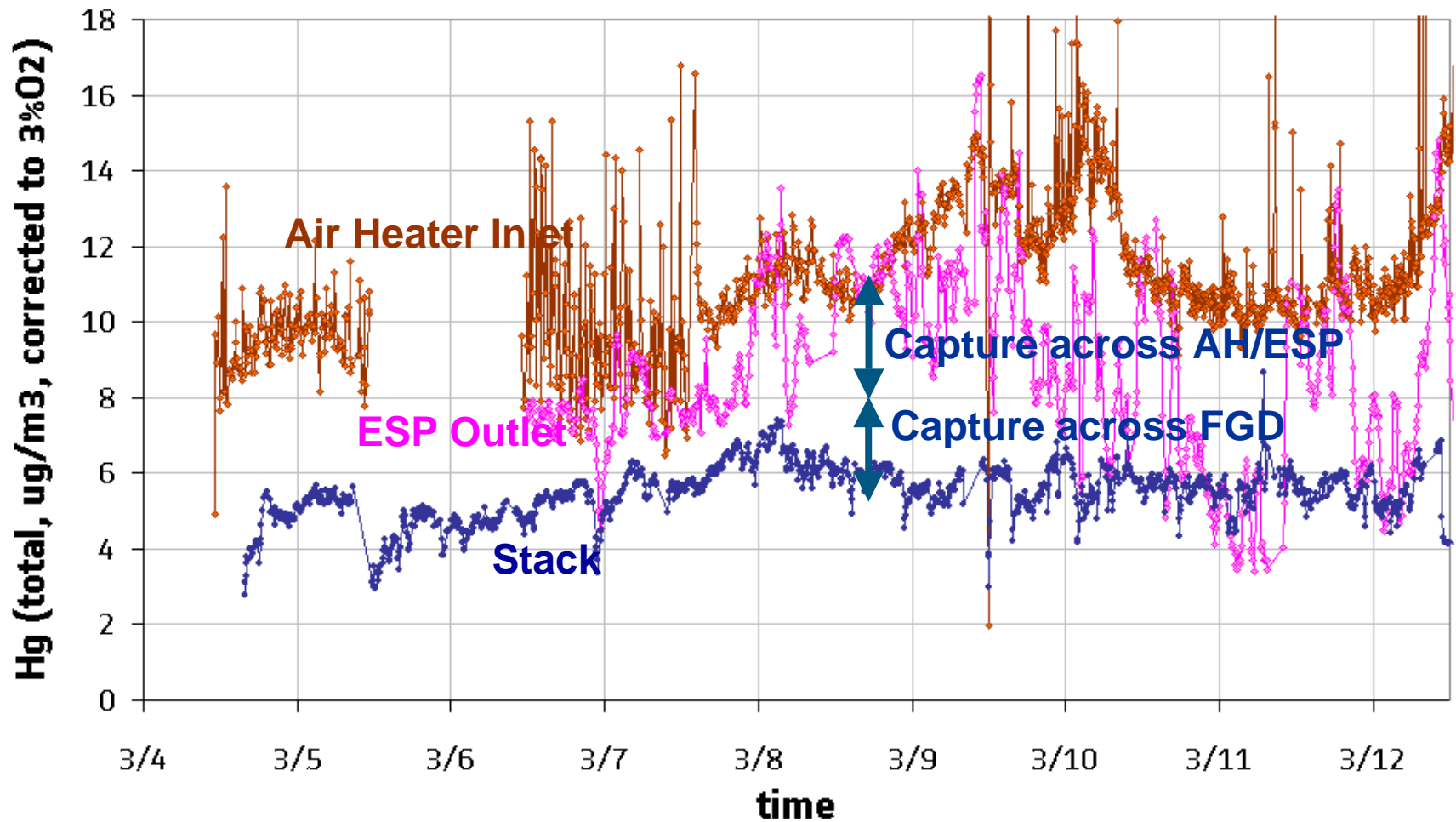
- Background
- ALSTOM Mer-Cure™ Technology
- Project Objectives
- • LCRA Test Results
 - Baseline measurements
 - Parametric testing
 - Ash evaluation
 - Balance of plant impact
- Summary
- Acknowledgements

AH inlet CMM vs Hg from coal analysis

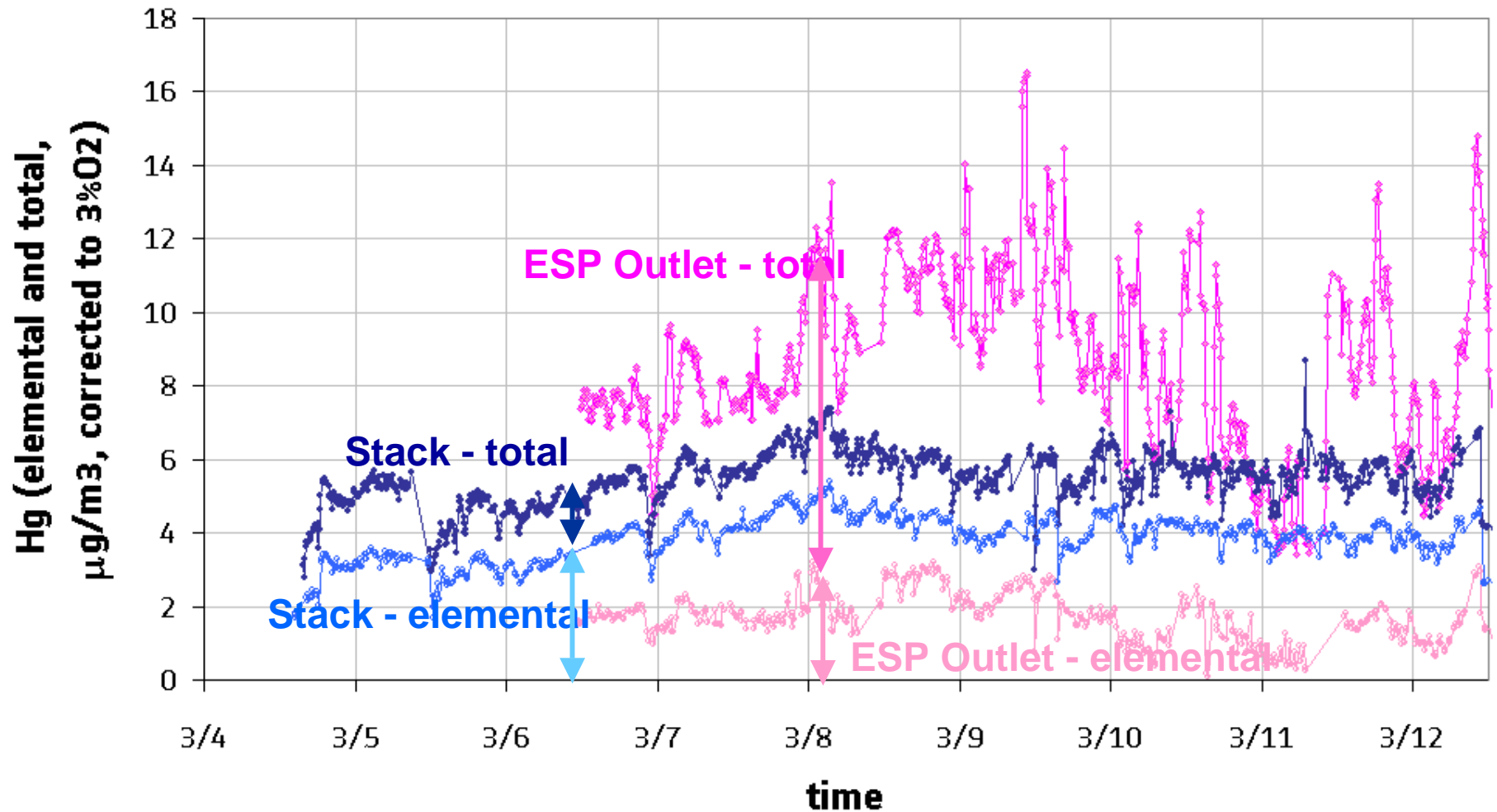


- CMM readings and calculated Hg concentrations are in general agreement

Baseline Measurements – all three locations



Baseline Measurements - Speciation



Baseline Measurements - Summary

(at 3% O₂)

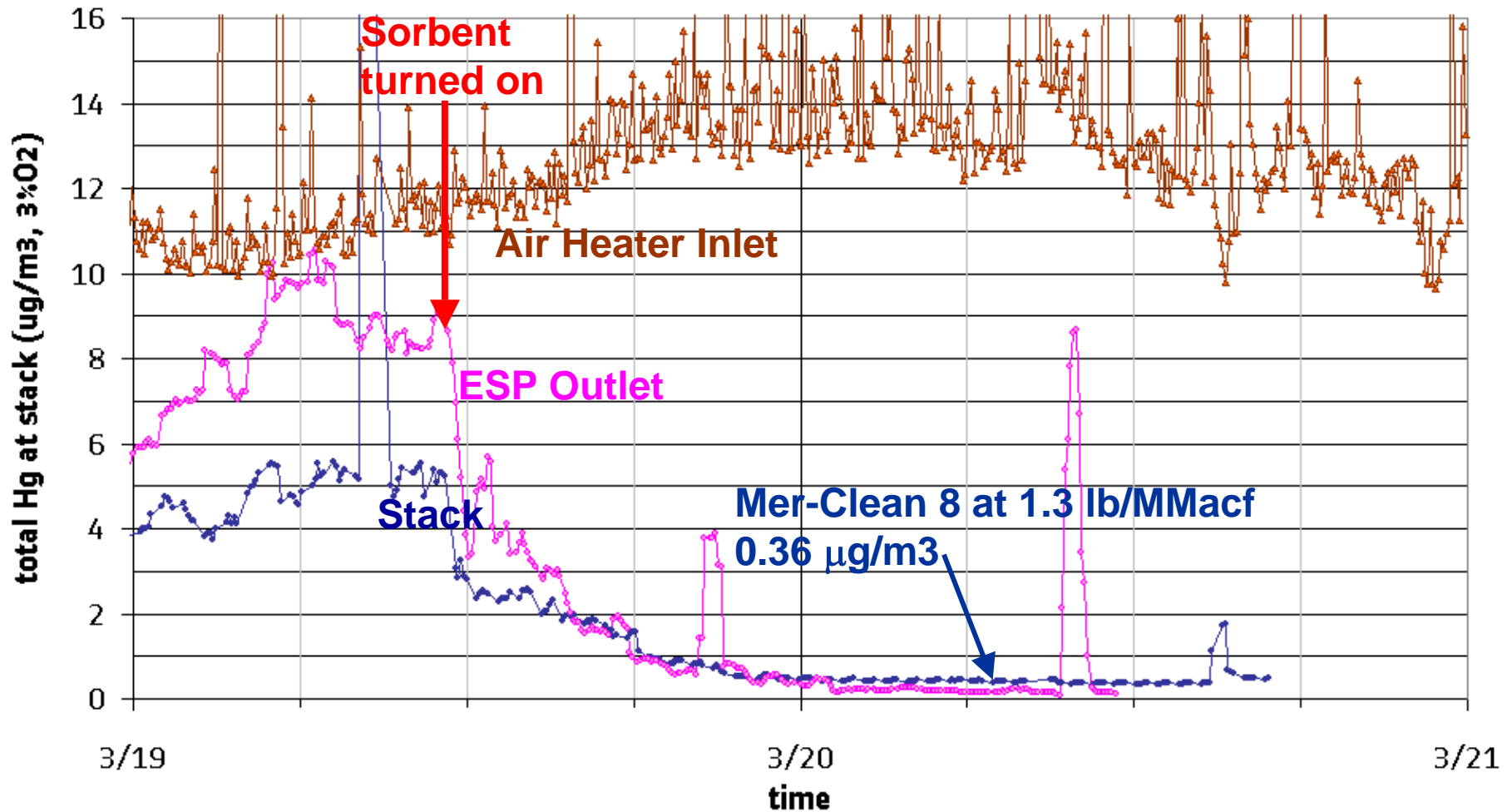
Measurement location	total	elemental	oxidized	% oxidized
Air Heater inlet	11.7	N/A	N/A	
ESP outlet	8.5	1.7	6.8	80% oxidized
Stack	5.9	4.2	1.7	28% oxidized

- About 50% of AH inlet mercury inherently captured by boiler:
 - 27% across AH and ESP
 - 23% across FGD modules
- Not all of oxidized mercury was captured across FGD!!
- A significant amount of oxidized mercury was reduced to elemental mercury in FGD

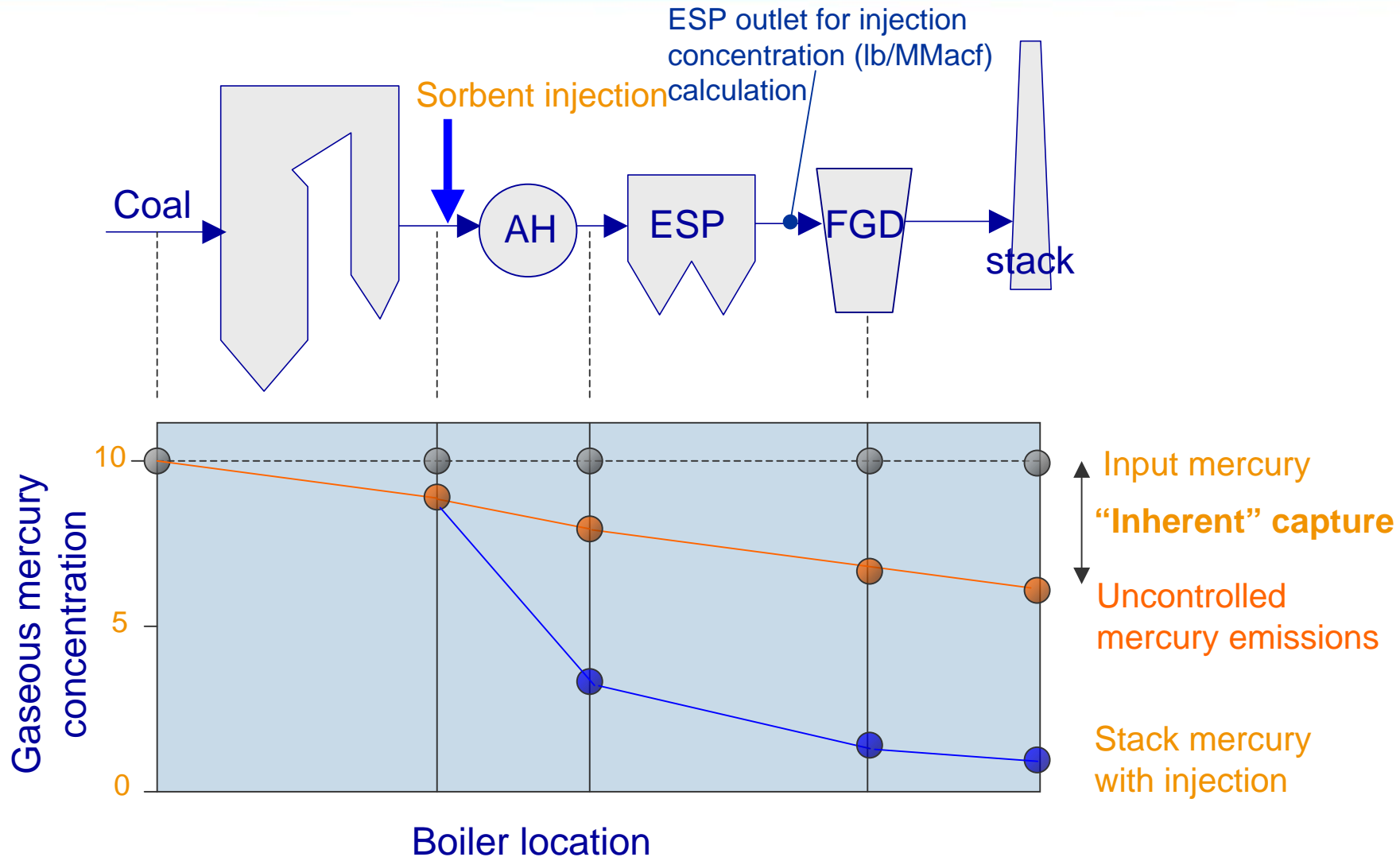
Parametric Testing

- Tested four (4) sorbents for mercury reduction:
 - ALSTOM's Mer-Clean™ 8, Envergex's eSorb™ 11, 13 and 18
 - Constructed performance curve: injection rate vs. % removal
- Constructed foam index chart with simulated ash-sorbent mixture:
 - Mixed LCRA ash with a small amount of sorbent at various proportions
 - Foam index-tested ash-sorbent mixtures
 - % carbon (sorbent) in ash vs. drops (foam index value)

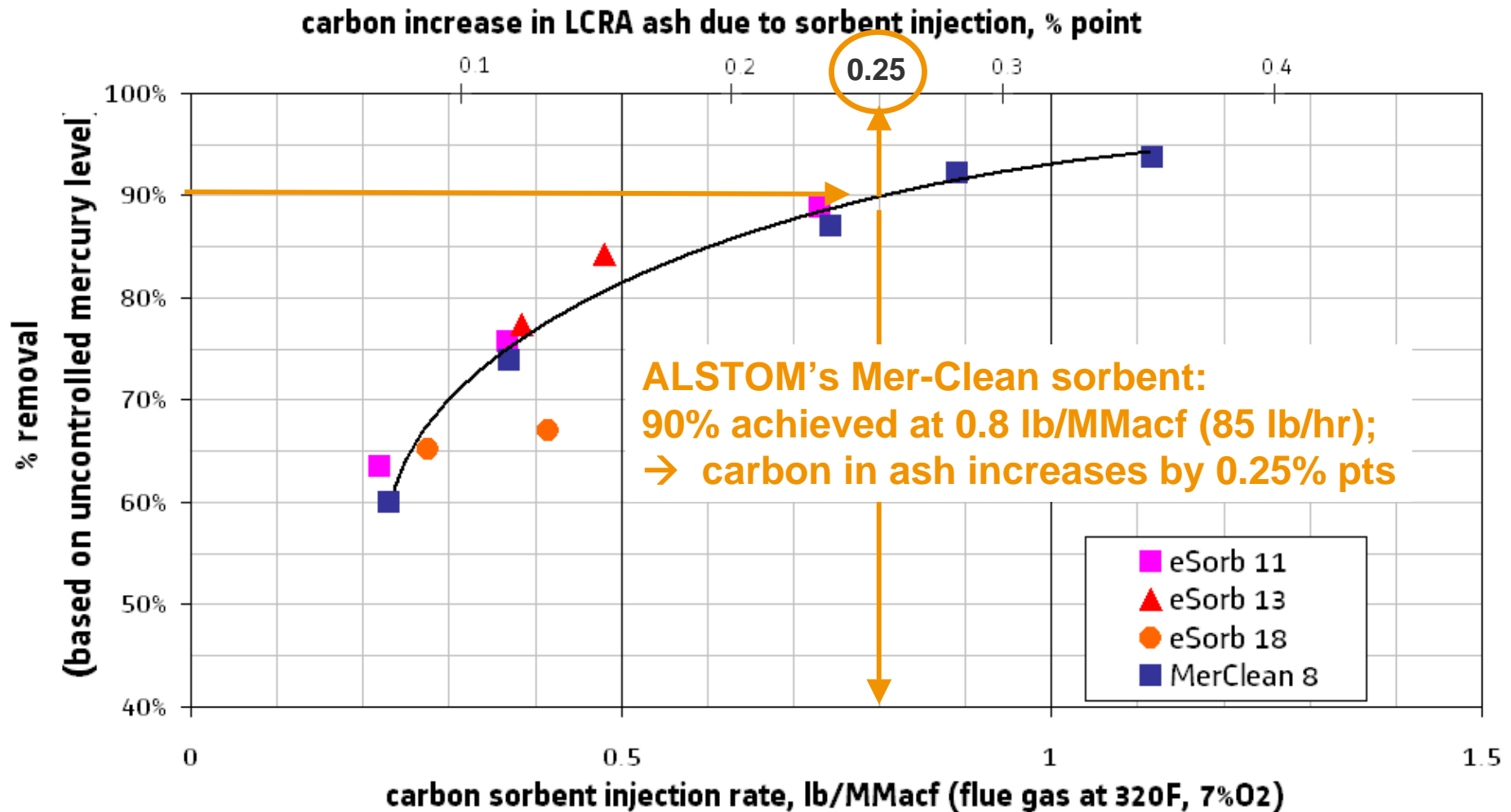
Parametric Testing – Typical Run



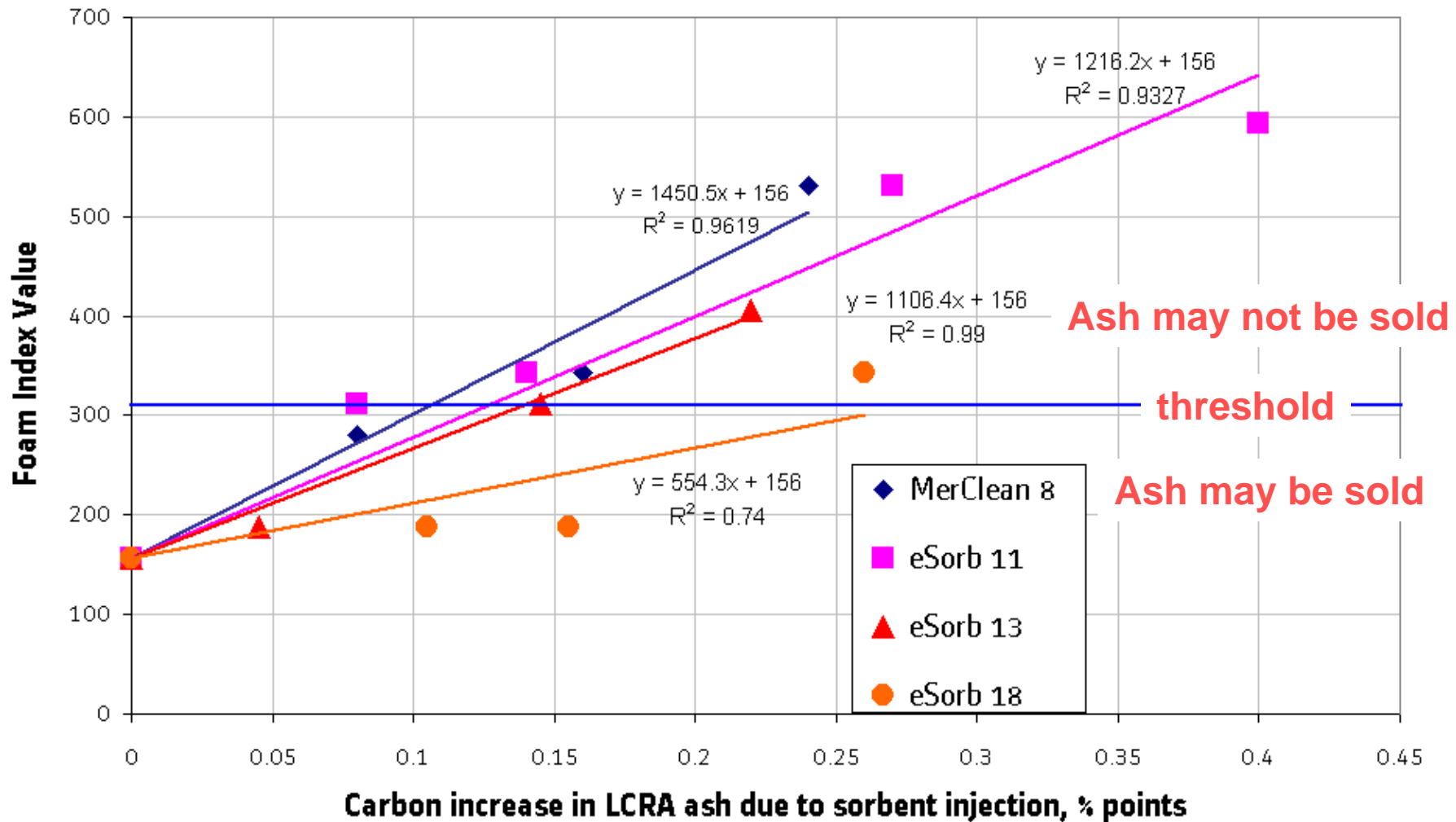
Definitions of Mercury Capture Efficiencies



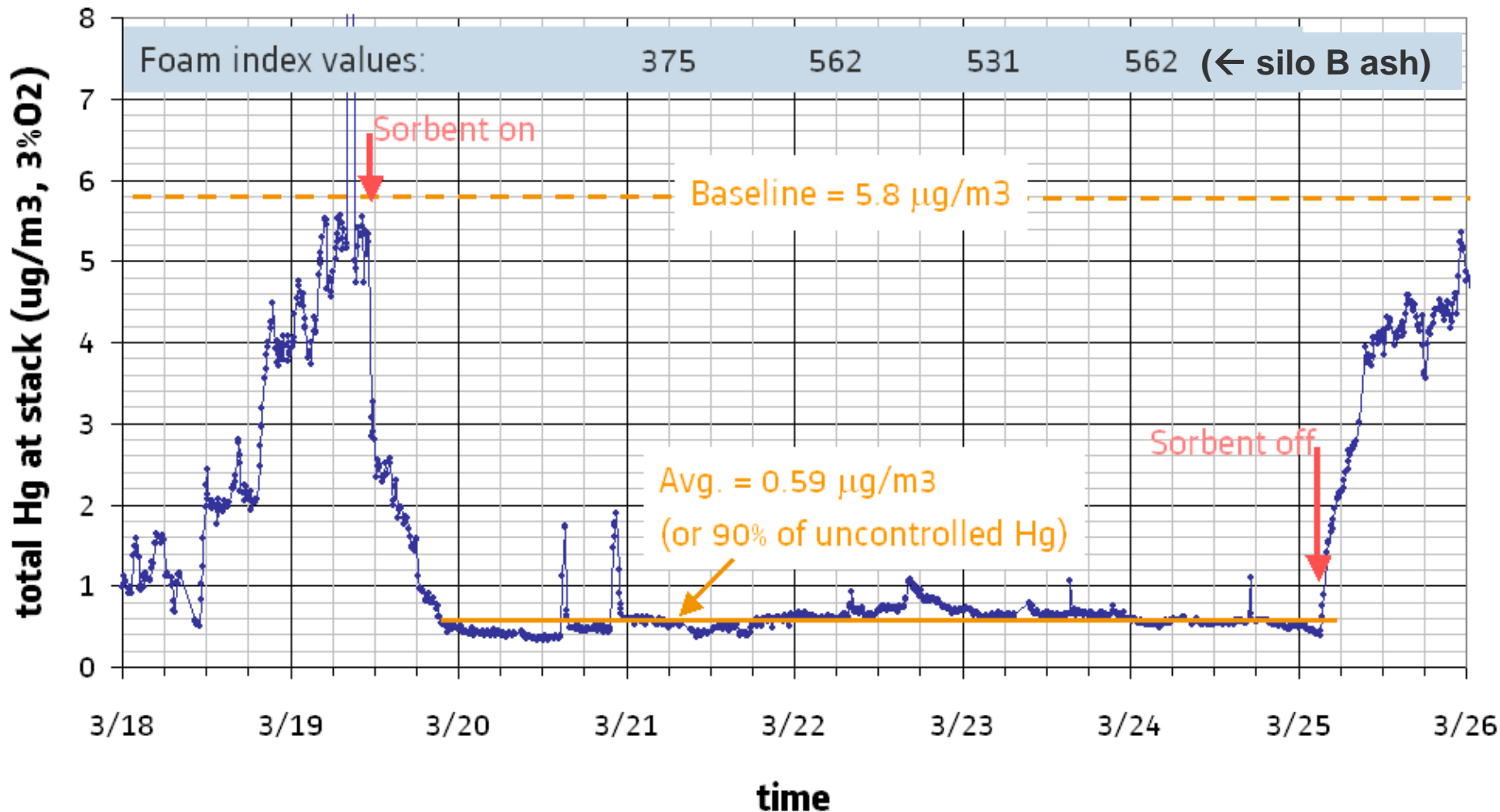
Parametric Testing – Hg capture performance



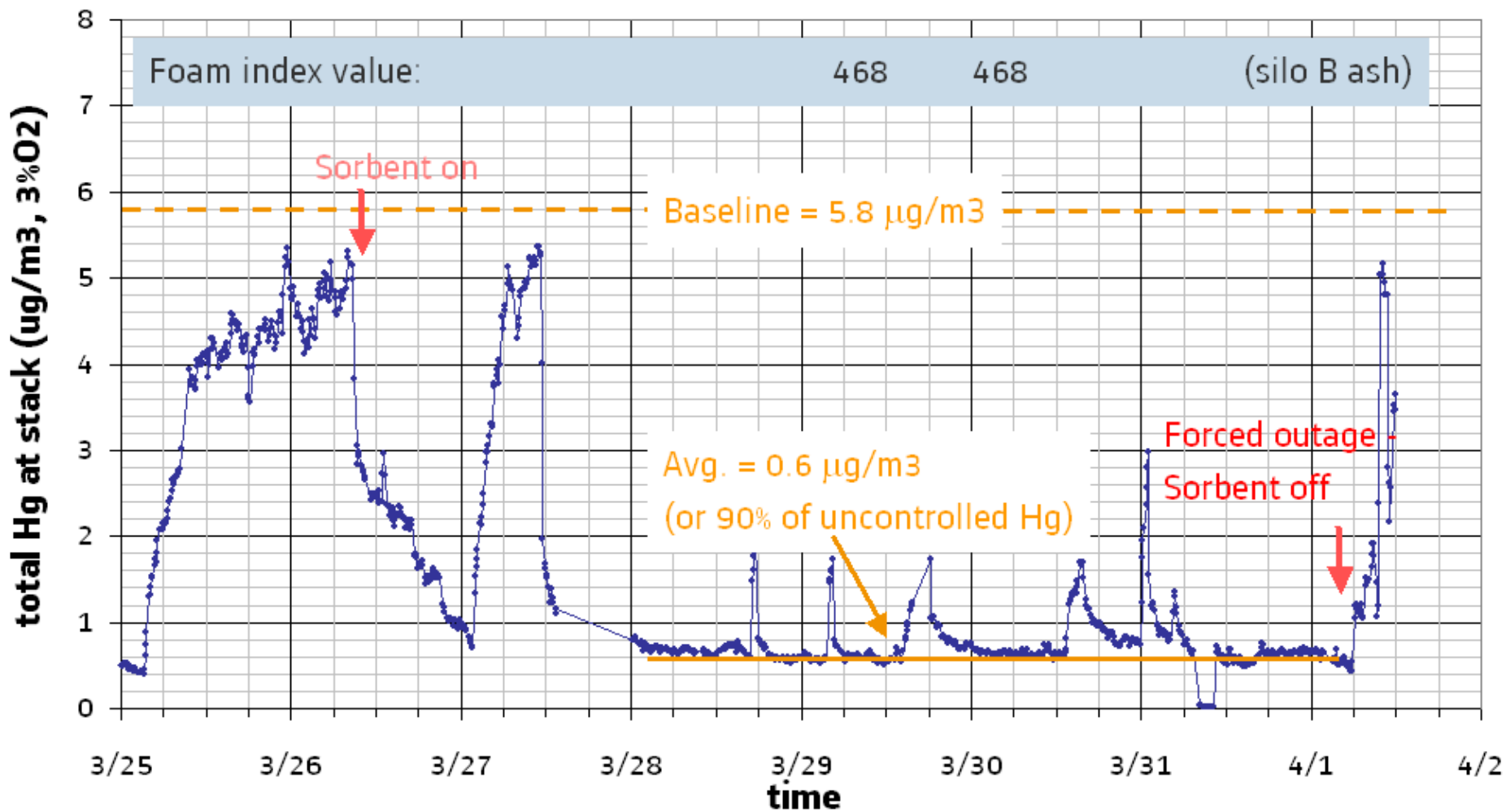
Parametric Testing – foam index test performance



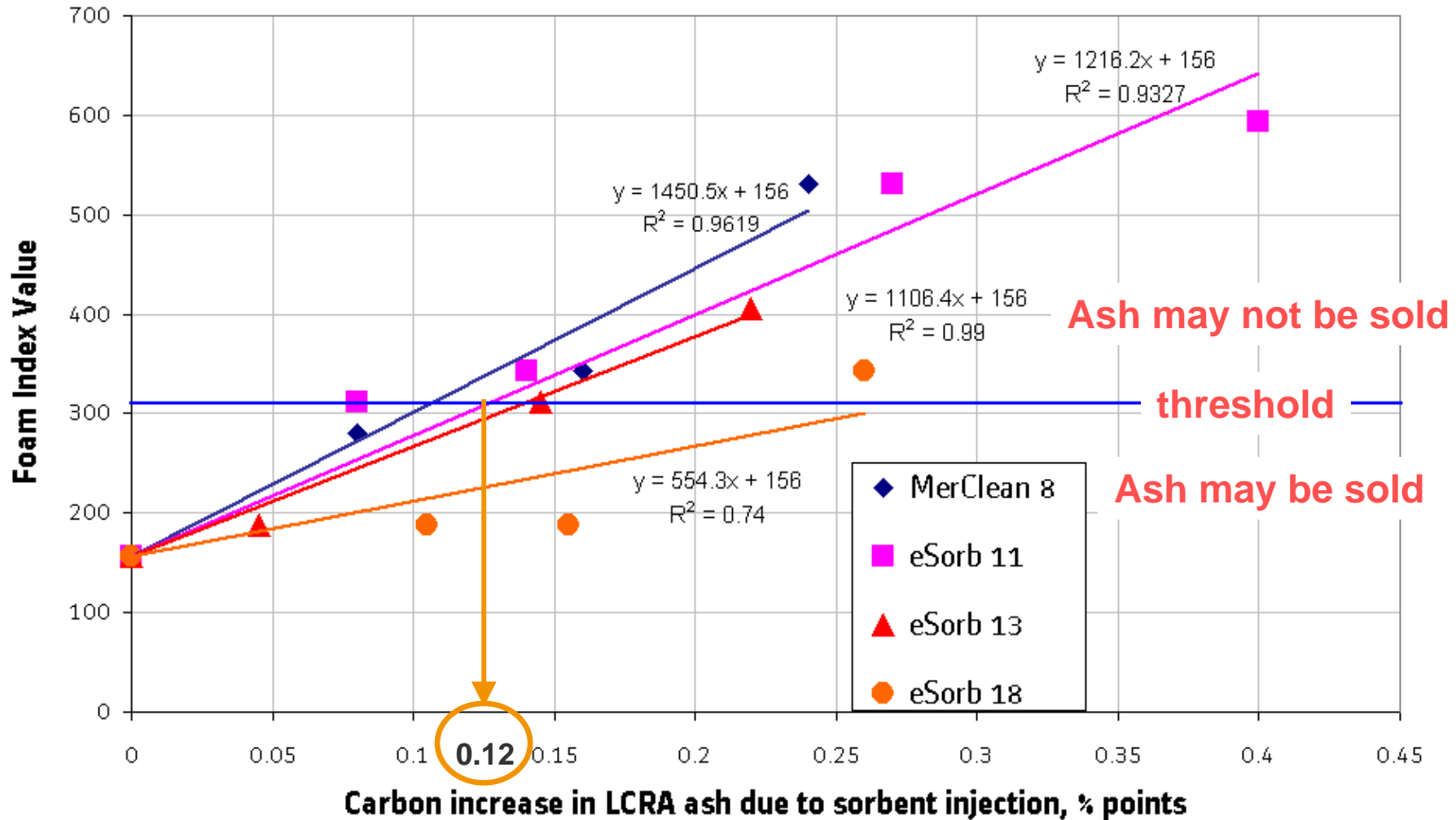
Ash Evaluation Testing – Mer-Clean™ Sorbent



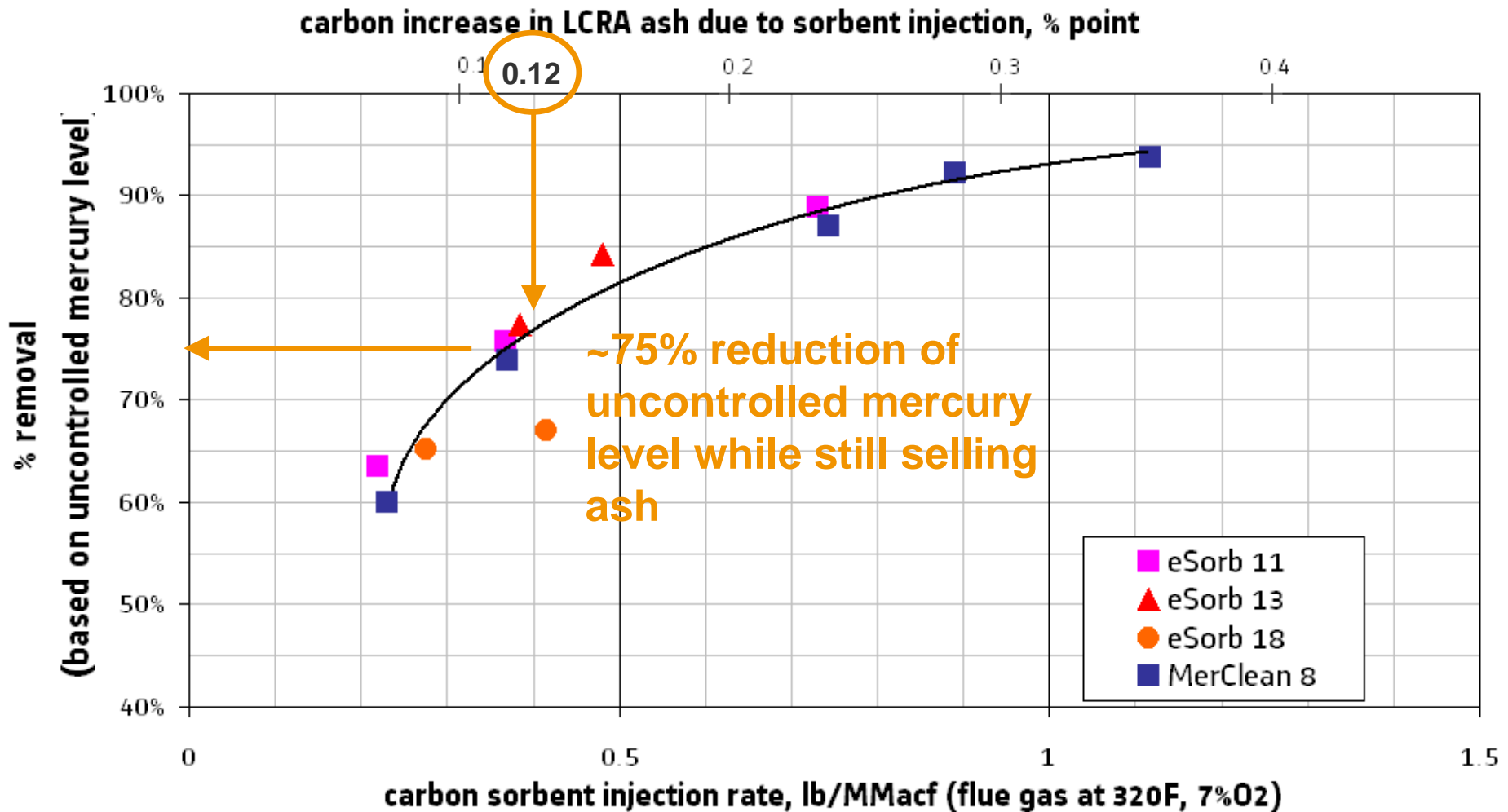
Ash Evaluation Testing – eSorb™ 11 Sorbent



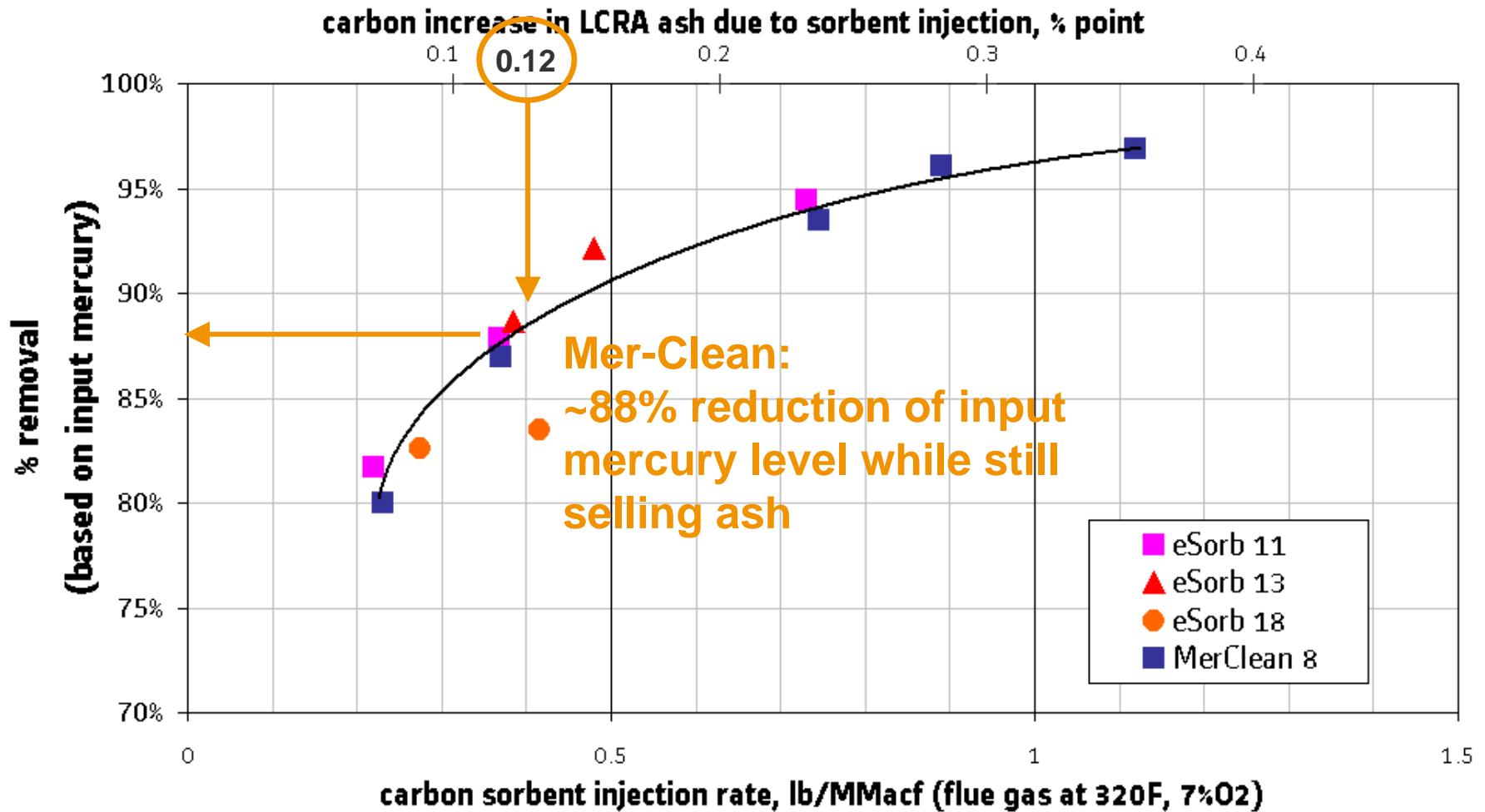
Ash Evaluation Testing – foam index test performance



Ash Evaluation Testing – Hg capture performance



On Input Mercury Basis...

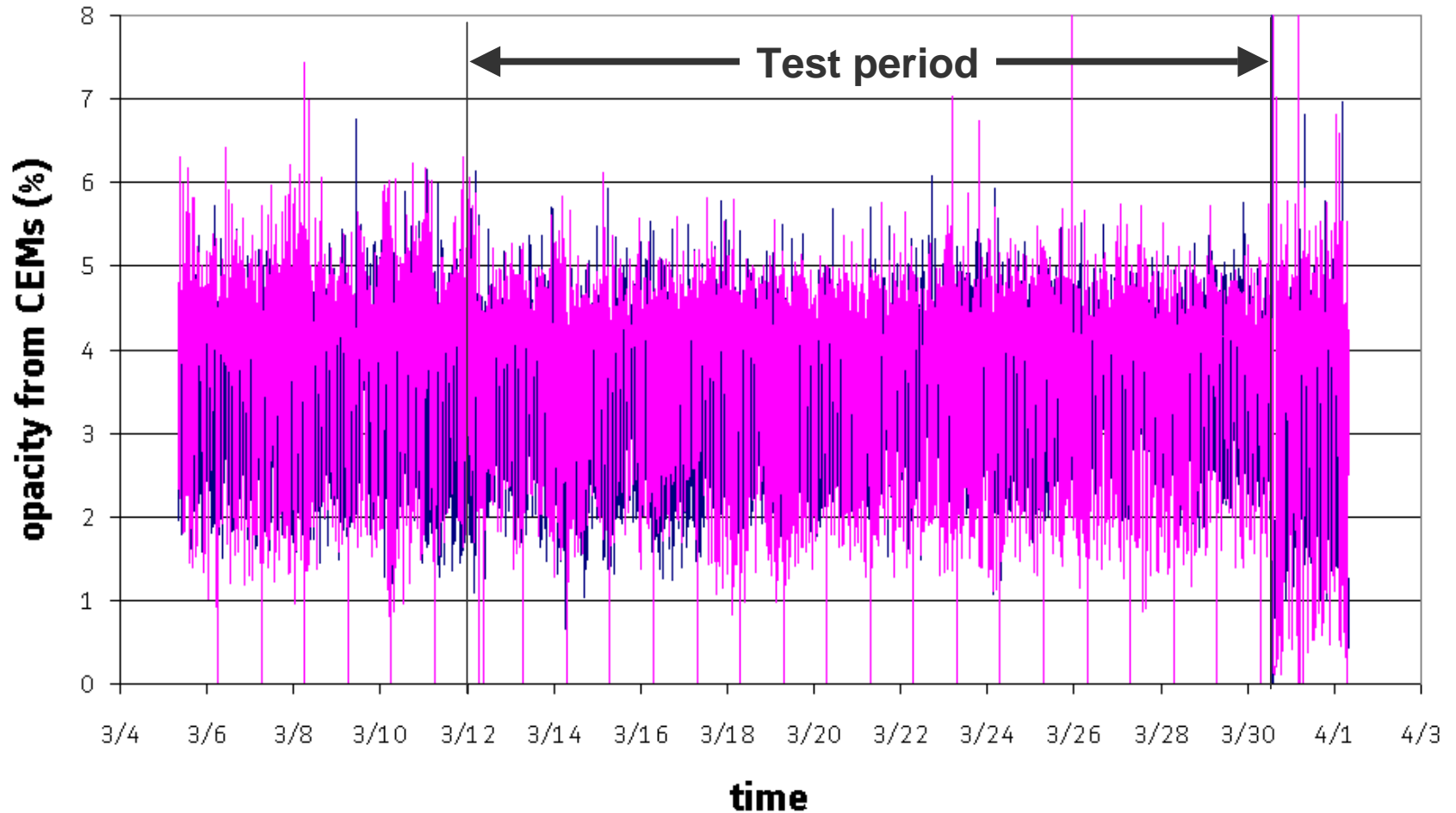


Ash Leaching Test Results – No Detectable Leaching

PPL#	Sample location	Date	Time	mg Hg/l	TCLP Extraction (mg/liter)								
					As	Ba	Cd	Cr	Pb	Hg	Se	Ag	
7-2676-M	Reclaim Pond	3/12	8:57	<0.2									
7-2677-M	LS slurry tank	3/12	8:28	<5									
7-2586-A	Silo ash	3/13			<1	3.5	<0.1	0.3	<0.5	<.001	<0.5	<0.1	
7-2587-A	Silo 3B-01	3/23	17:15		<1	3.3	<0.1	0.29	<0.5	<.001	<0.5	<0.1	
7-2588-A	Silo 3B-02	3/23	17:15		<1	2.9	<0.1	0.28	<0.5	<.001	<0.5	<0.1	
7-2589-A	Silo 3B-01	3/30	16:15		<1	4.3	<0.1	0.32	<0.5	<.001	<0.5	<0.1	
7-2590-A	Silo 3B-02	3/30	16:15		<1	3.6	<0.1	0.28	<0.5	<.001	<0.5	<0.1	
7-2616-A	Silo B	3/28	15:05		<1	3.7	<0.1	0.31	<0.5	<.001	<0.5	<0.1	
7-2617-A	Silo B	3/29	11:35		<1	3.6	<0.1	0.32	<0.5	<.001	<0.5	<0.1	
7-2618-A	Silo B	3/30	9:00		<1	3.6	<0.1	0.32	<0.5	<.001	<0.5	<0.1	

Analysis conducted by Alpha Analytical

ESP Performance - Opacity



No change in stack opacity during sorbent injection

Outline

- Background
- ALSTOM Mer-Cure™ Technology
- Project Objectives
- LCRA Test Results
 - Baseline measurements
 - Parametric testing
 - Ash evaluation
 - Balance of plant impact



- Summary
- Acknowledgements

Summary

- Baseline measurements
 - Native capture is 50% - 27% by AH/ESP and 23% by FGD
 - Not all of oxidized mercury was captured by FGD
 - A large amount of oxidized mercury was reduced to elemental in FGD
- Parametric testing during sorbent injection
 - 90% of uncontrolled mercury emission was captured at 0.8 lb/MMacf
 - 90% of input mercury was captured at 0.5 lb/MMacf
 - No capture was observed by FGD
- Balance-of-plant impact
 - No stack opacity increase during injection
 - No leaching of mercury from flyash
- Continued ash sales/utilization
 - 75% of uncontrolled mercury can be removed before ash sales loss
 - 88% of input mercury may be removed before ash sales loss

Acknowledgements

Department of Energy/NETL – financial support

Lower Colorado River Authority – host site

Envergex, LLC – specialized sorbents

UND EERC – measurement services

www.alstom.com

ALSTOM