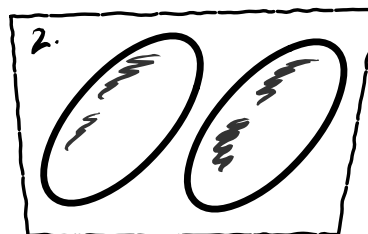
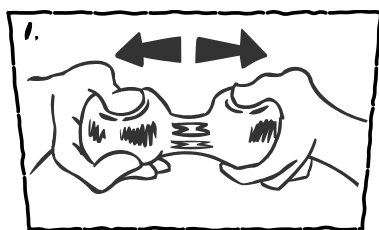


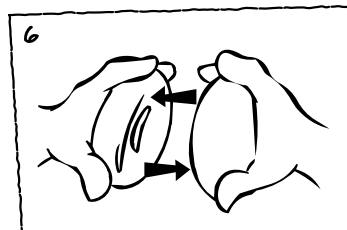
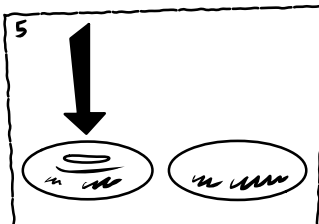
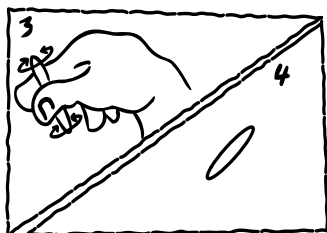
Student Instruction Sheet

Module 2: Brains in a Box: What Your Brain Can Do

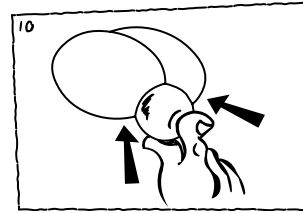
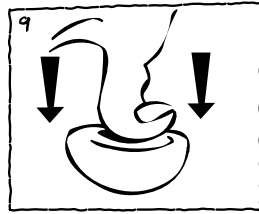
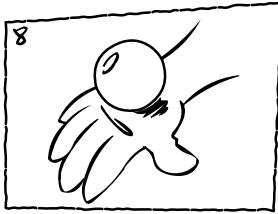
1. Do you have your box and a set of trading cards? If so, then you are ready to start.
2. Open your box and take out one clump of the Play-Doh. Split it into two parts that are the same size. Roll each part into an oval. These two ovals are parts of your brain called hemispheres. You can use your fingernails to make wrinkles on the hemispheres.



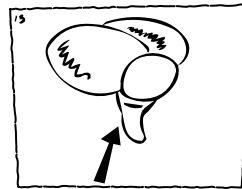
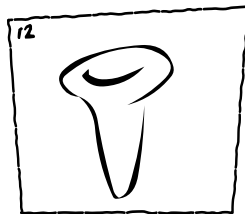
3. Make the next part of the brain, called the limbic system. Use a different color Play-Doh. Make a small piece that is shaped like a bean. Lay the bean down on one of the hemispheres. Press the two hemispheres together.



4. Now make the third part of the brain, the cerebellum. Use a third color of Play-Doh. Make a ball one-third the size of one of the hemispheres. Flatten the ball a little with your thumb. Put the ball on the bottom and underneath the hemispheres.



5. Make the brain stem. Use a fourth color and make a shape that looks like a trumpet. Stick the trumpet at the bottom of the cerebellum.



6. Fill out the log sheet.

7. **CONGRATULATIONS! MISSION 2 IS NOW COMPLETED.**