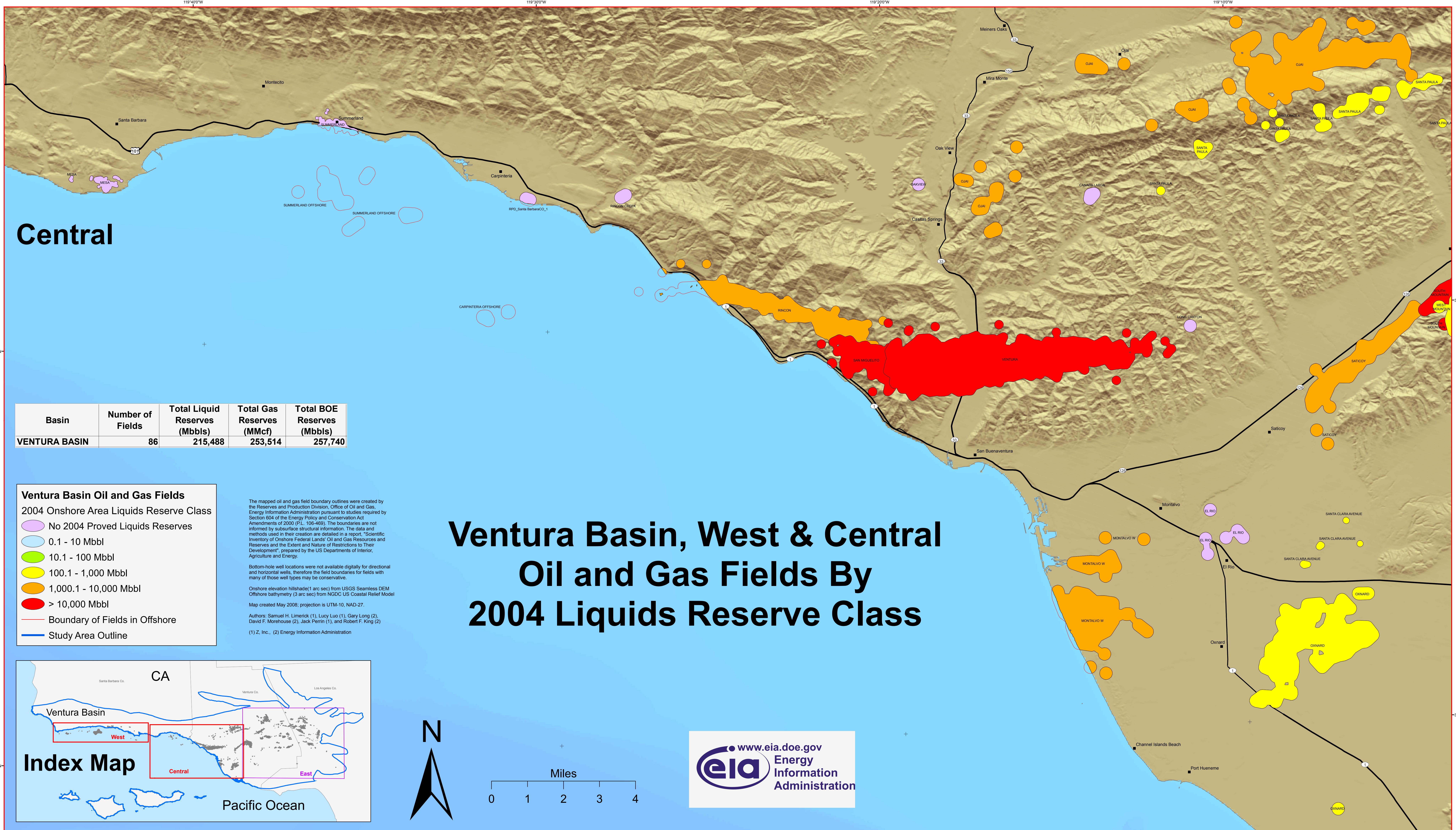


West



Central

| Basin | Number of Fields | Total Liquid Reserves (Mbbbls) | Total Gas Reserves (MMcf) | Total BOE Reserves (Mbbbls) |
|---------------|------------------|--------------------------------|---------------------------|-----------------------------|
| VENTURA BASIN | 86 | 215,488 | 253,514 | 257,740 |

Ventura Basin Oil and Gas Fields
 2004 Onshore Area Liquids Reserve Class

- No 2004 Proved Liquids Reserves
- 0.1 - 10 Mbbbl
- 10.1 - 100 Mbbbl
- 100.1 - 1,000 Mbbbl
- 1,000.1 - 10,000 Mbbbl
- > 10,000 Mbbbl
- Boundary of Fields in Offshore
- Study Area Outline

The mapped oil and gas field boundary outlines were created by the Reserves and Production Division, Office of Oil and Gas, Energy Information Administration pursuant to studies required by Section 604 of the Energy Policy and Conservation Act Amendments of 2000 (P.L. 106-469). The boundaries are not informed by subsurface structural information. The data and methods used in their creation are detailed in a report, "Scientific Inventory of Onshore Federal Lands' Oil and Gas Resources and Reserves and the Extent and Nature of Restrictions to Their Development", prepared by the US Departments of Interior, Agriculture and Energy.

Bottom-hole well locations were not available digitally for directional and horizontal wells, therefore the field boundaries for fields with many of those well types may be conservative.

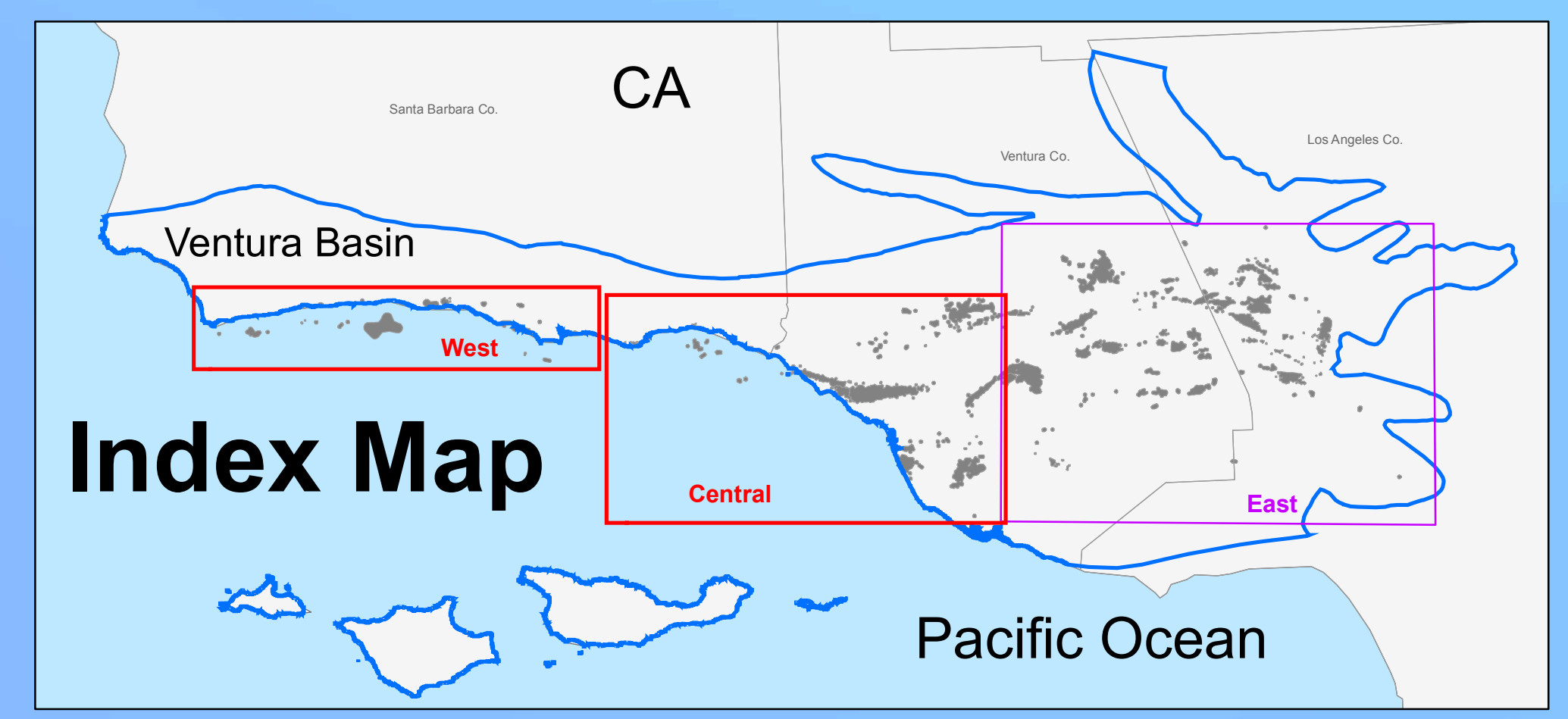
Onshore elevation hillshade(1 arc sec) from USGS Seamless DEM Offshore bathymetry (3 arc sec) from NGDC US Coastal Relief Model

Map created May 2008; projection is UTM-10, NAD-27.

Authors: Samuel H. Limerick (1), Lucy Luo (1), Gary Long (2), David F. Morehouse (2), Jack Perrin (1), and Robert F. King (2)

(1) Z, Inc., (2) Energy Information Administration

Ventura Basin, West & Central Oil and Gas Fields By 2004 Liquids Reserve Class



Index Map

