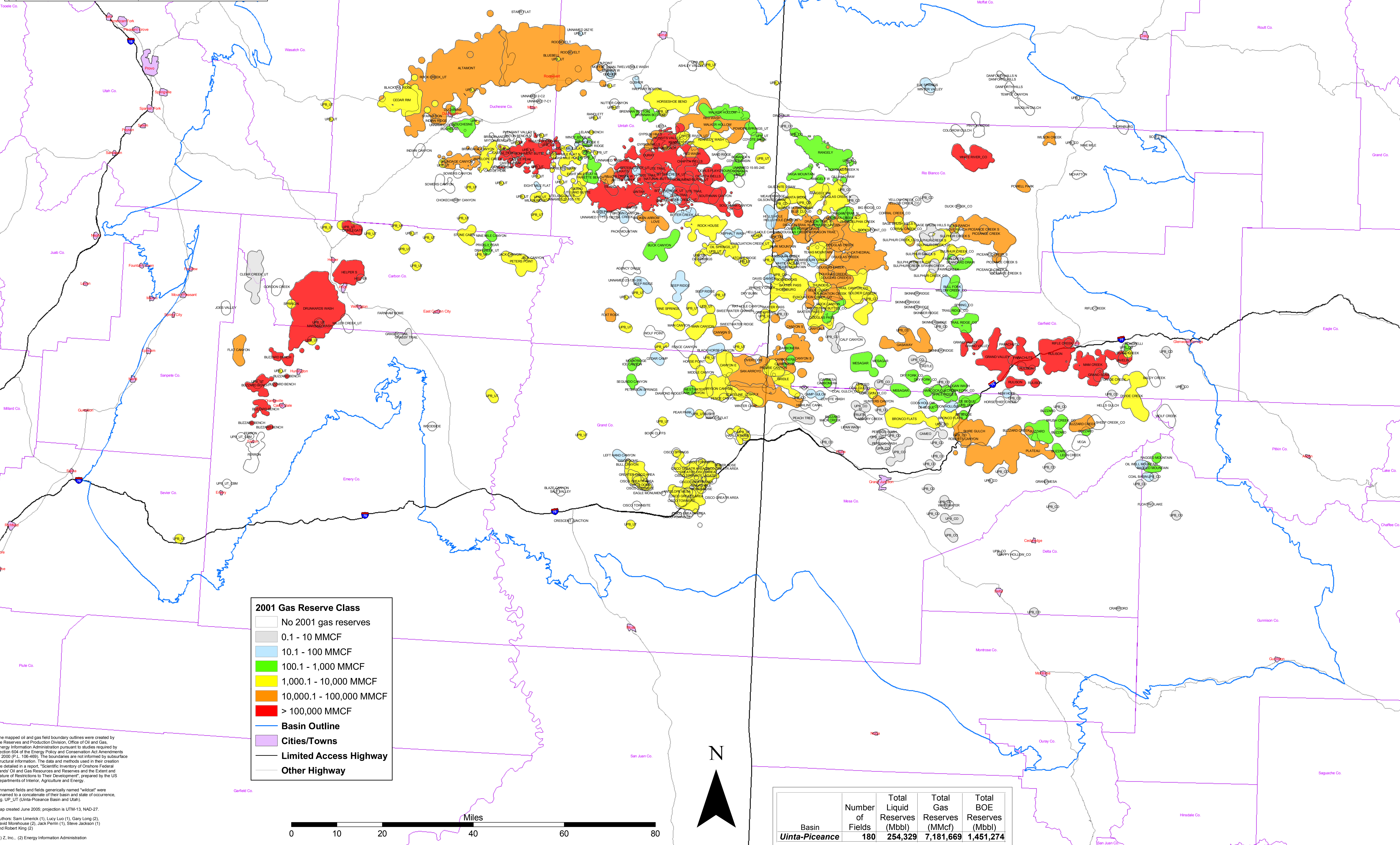
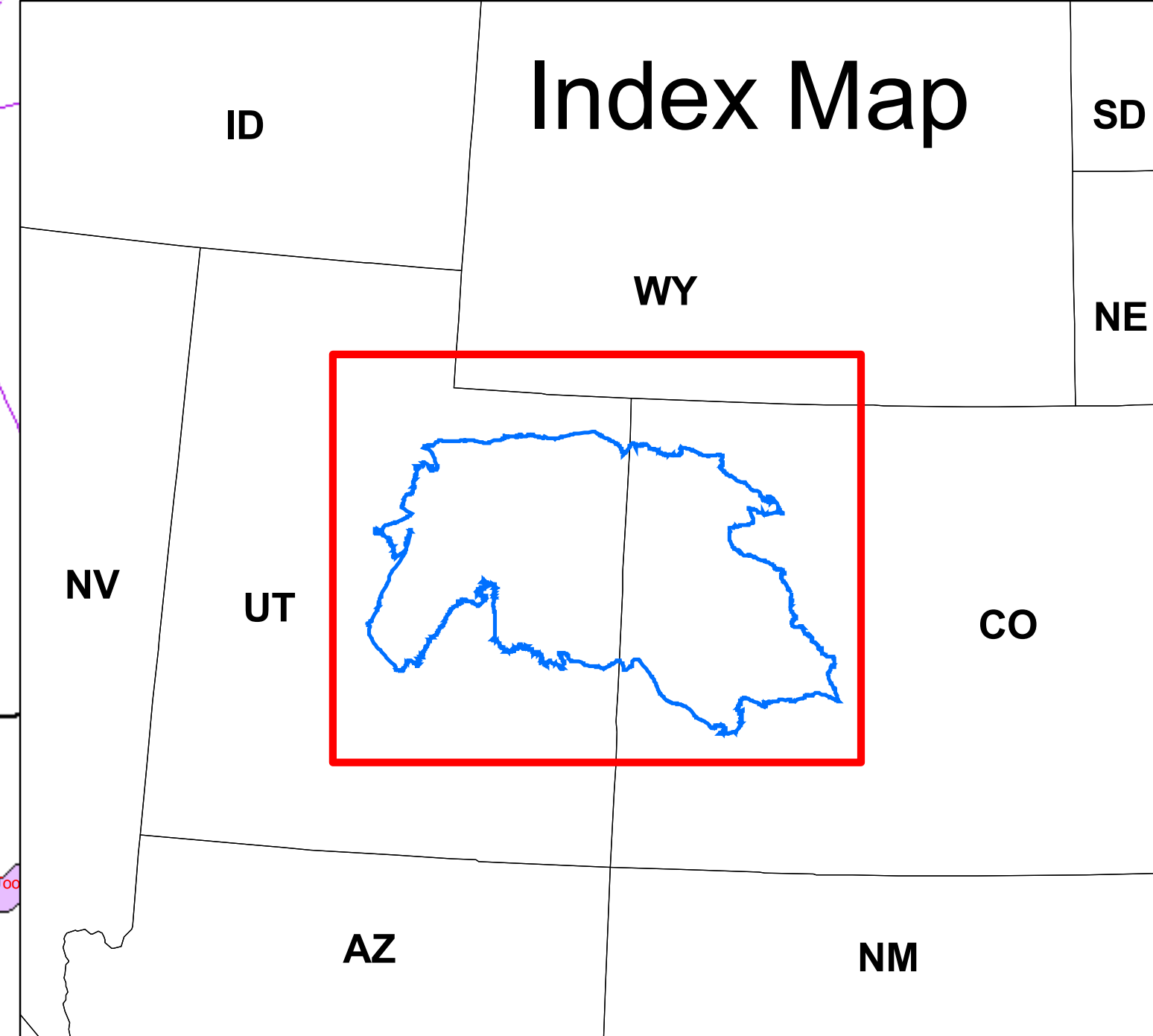


Uinta-Piceance Basin Oil & Gas Fields By 2001 Gas Reserve Class



2001 Gas Reserve Class

- No 2001 gas reserves
- 0.1 - 10 MMCF
- 10.1 - 100 MMCF
- 100.1 - 1,000 MMCF
- 1,000.1 - 10,000 MMCF
- 10,000.1 - 100,000 MMCF
- > 100,000 MMCF
- Basin Outline
- Cities/Towns
- Limited Access Highway
- Other Highway

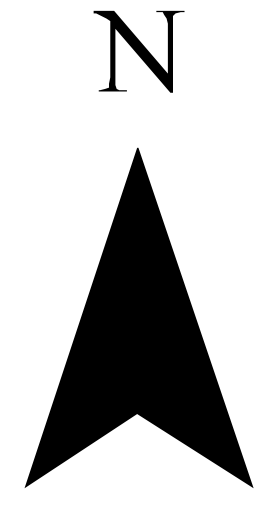
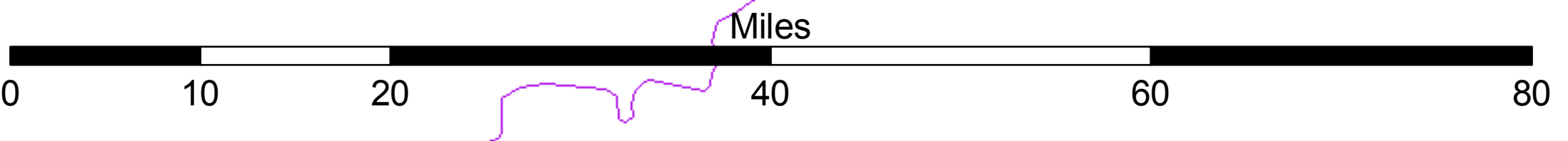
The mapped oil and gas field boundary outlines were created by the Reserves and Production Division, Office of Oil and Gas, Energy Information Administration pursuant to studies required by Section 604 of the Energy Policy and Conservation Act Amendments of 2000 (P.L. 106-468). The boundaries are not informed by subsurface structural information. The data and methods used in their creation are detailed in a report, "Scientific Inventory of Onshore Federal Lands' Oil and Gas Resources and Reserves and the Extent and Nature of Restrictions to Their Development", prepared by the US Departments of Interior, Agriculture and Energy.

Unnamed fields and fields generically named "wildcat" were renamed to a concatenation of their basin and state of occurrence, e.g. UP_UT (Uinta-Piceance Basin and Utah).

Map created June 2005; projection is UTM-13, NAD-27.

Authors: Sam Limerick (1), Lucy Luo (1), Gary Long (2), David Morehouse (2), Jack Perin (1), Steve Jackson (1) and Robert King (2)

(1) E. Inc., (2) Energy Information Administration



Basin	Number of Fields	Total Liquid Reserves (Mbbbl)	Total Gas Reserves (MMcf)	Total BOE Reserves (Mbbbl)
Uinta-Piceance	180	254,329	7,181,669	1,451,274