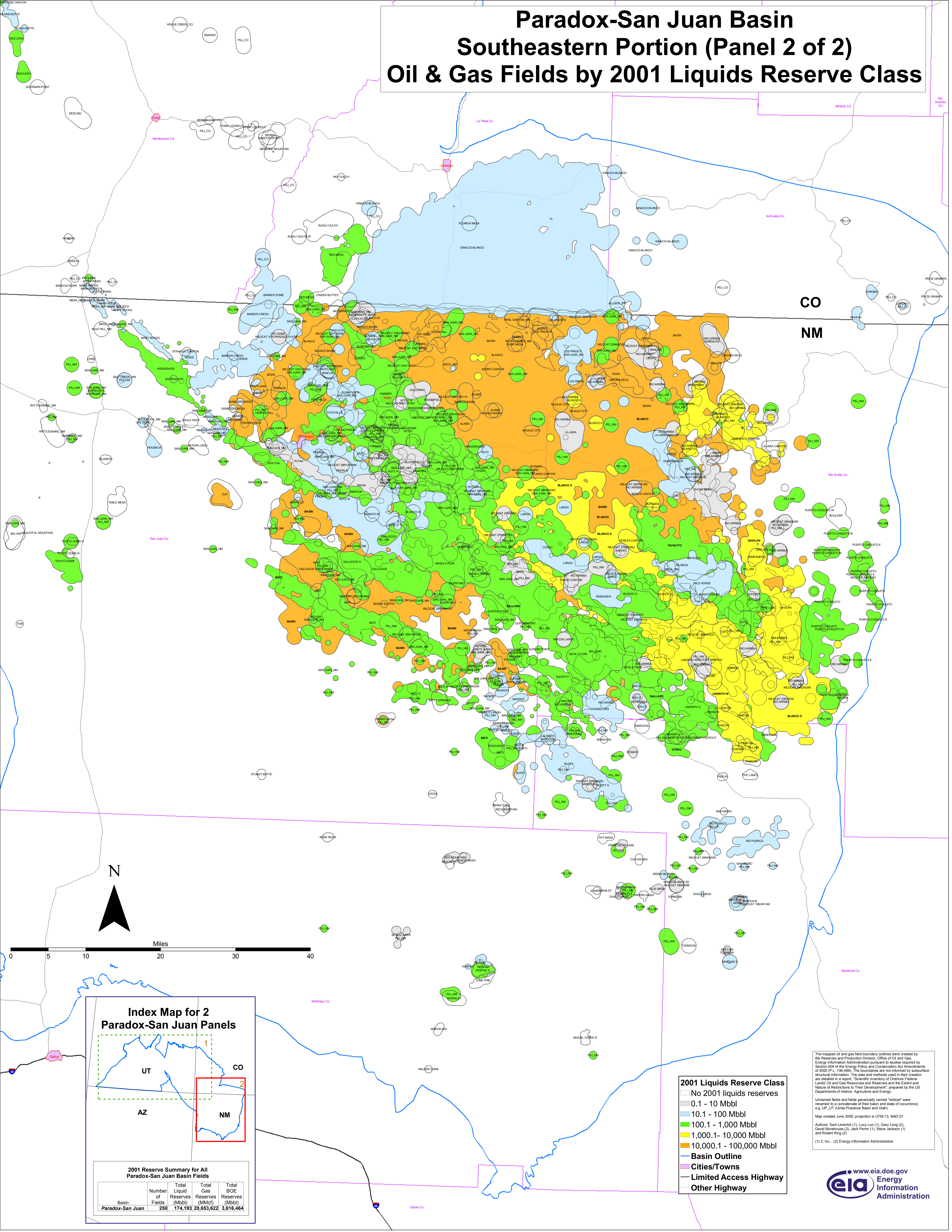
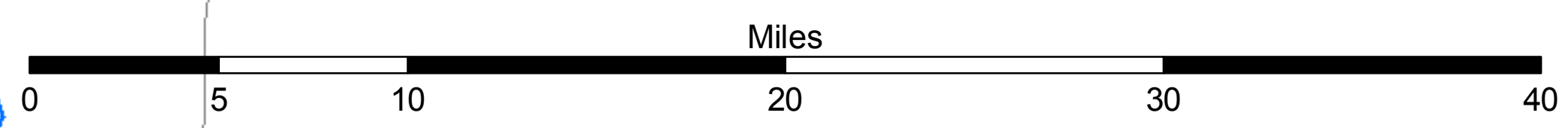
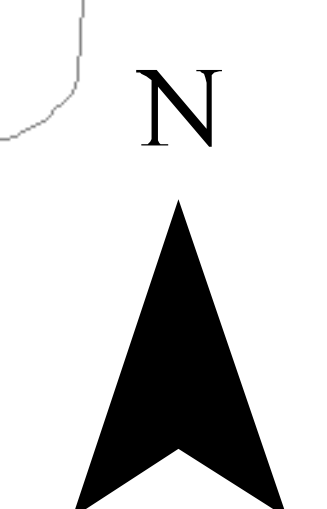


Paradox-San Juan Basin Southeastern Portion (Panel 2 of 2) Oil & Gas Fields by 2001 Liquids Reserve Class



CO
NM



Index Map for 2 Paradox-San Juan Panels

2001 Reserve Summary for All Paradox-San Juan Basin Fields				
Basin	Number of Fields	Total Liquid Reserves (Mbl)	Total Gas Reserves (Mblcf)	Total BOE Reserves (Mbl)
Paradox-San Juan	250	174,193	20,653,622	3,816,464

- 2001 Liquids Reserve Class**
- No 2001 liquids reserves
 - 0.1 - 10 Mbbl
 - 10.1 - 100 Mbbl
 - 100.1 - 1,000 Mbbl
 - 1,000.1 - 10,000 Mbbl
 - 10,000.1 - 100,000 Mbbl
 - Basin Outline
 - Cities/Towns
 - Limited Access Highway
 - Other Highway

The mapped oil and gas field boundary outlines were created by the Reserves and Production Division, Office of Oil and Gas, Energy Information Administration pursuant to studies required by Section 106 of the Energy Policy and Conservation Act Amendments of 2000 (P.L. 106-469). The boundaries are not informed by subsurface structural information. The data and methods used in their creation are detailed in a report, "Scientific Inventory of Onshore Federal Lands' Oil and Gas Resources and Reserves and the Extent and Nature of Reserves to Their Development," prepared by the US Departments of Interior, Agriculture and Energy.

Unnamed fields and fields generically named "wildcat" were renamed to a combination of their basin and state of occurrence, e.g. UP_UT (Utah-Priceville Basin and Utah).

Map created June 2005; projection is UTM-13, NAD-27.

Authors: Sam Limerick (1), Lucy Luo (1), Gary Long (2), David Morehouse (2), Jack Perin (1), Steve Jackson (1) and Robert King (2)

(1) Z. Inc., (2) Energy Information Administration