

TABLE OF CONTENTS

	Page
<u>KEY DATA</u>	2
<u>ECONOMIC ASSUMPTIONS</u>	3
<u>CHART -- TUR-IUR COMPARISON</u>	4
<u>SUMMARY OF UI ESTIMATES</u>	5
<u>COMPARISON OF PROJECTIONS</u>	6
<u>CHART -- COMPARISON OF OUTLAY ESTIMATES</u>	7
<u>HISTORICAL UI PROGRAM DATA</u>	8
<u>CHART -- HISTORICAL AND PROJECTED OUTLAYS</u>	9
<u>STATUS OF STATE ACCOUNTS</u>	10
<u>CHART -- OUTLAYS VS. REVENUES</u>	11
<u>STATUS OF ESAA</u>	12
<u>STATUS OF EUCA</u>	13
<u>STATUS OF FUA</u>	14
<u>DEFINITIONS</u>	15

KEY DATA -- FY 2008/FY 2009

Total Unemployment Rate (Civilian)	4.9	/	4.9 %
Insured Unemployment Rate	2.0	/	2.0 %

OUTGO

◆ Benefits Paid (All Programs)	\$	34.9	/	37.6 billion
Number of Beneficiaries (All Programs)		8.0	/	8.3 million
Average Duration of Benefits (All Programs)		15.2	/	15.2 weeks
Average Weekly Benefit Amount (All Programs)	\$	285.80	/	297.20
◆ Administrative Costs	\$	3.7	/	3.6 billion

INCOME

◆ Payroll Taxes				
FUTA	\$	7.5	/	6.3 billion
State	\$	35.8	/	37.2 billion
◆ Interest on State Loans	\$	(1)	/	0.01 billion
Interest Rate (Calendar Year)		4.8078%	/	4.84%

TRUST FUND BALANCES (END OF FISCAL YEAR)

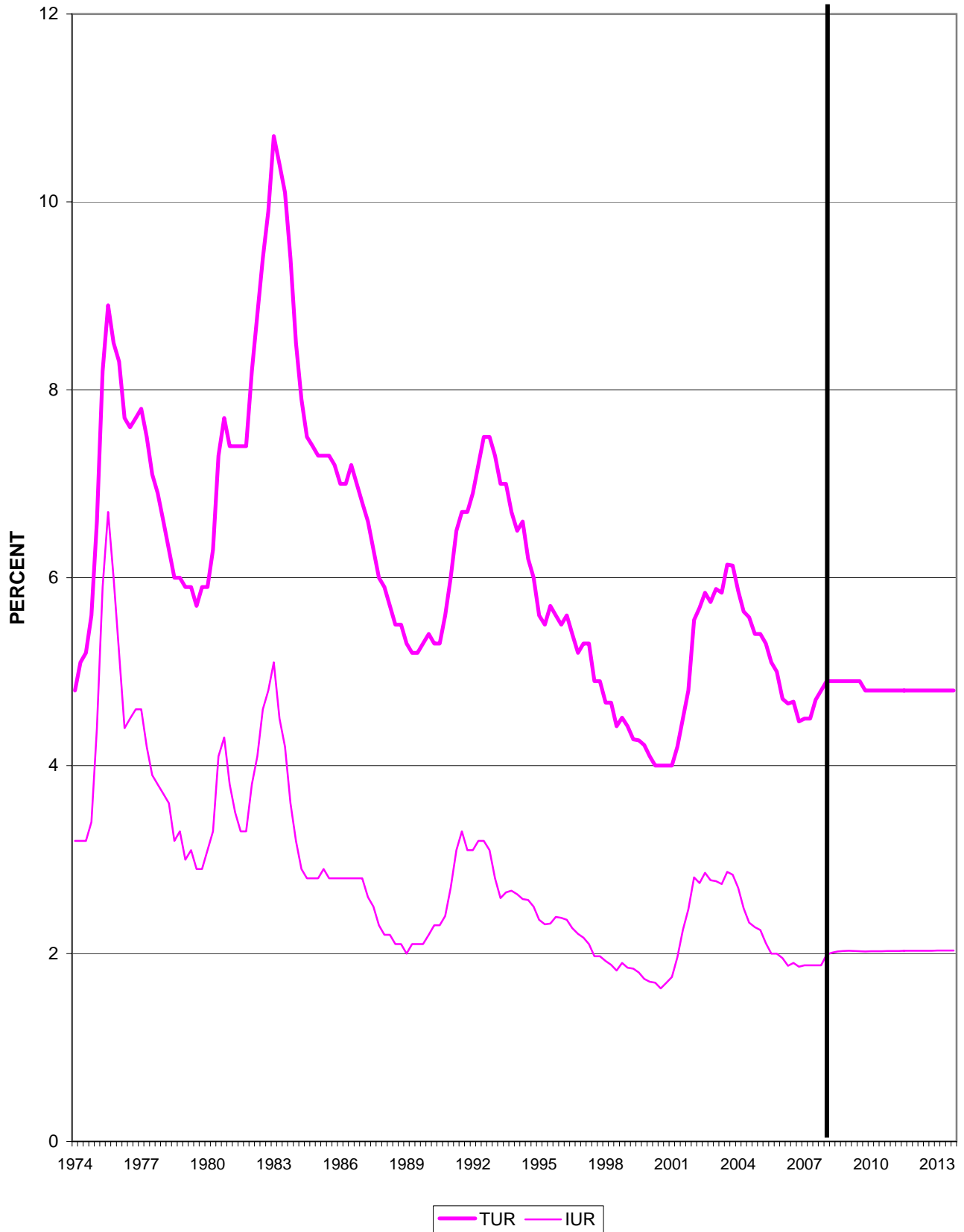
◆ State Trust Fund Accounts (Excluding Loans)	\$	44.6	/	47.5 billion
◆ Employment Security Administration Account (ESAA)	\$	3.9	/	3.0 billion
◆ Extended Benefit Account (EUCA)	\$	21.4	/	26.4 billion
◆ Loan Account (FUA)	\$	15.0	/	15.5 billion

(1) Less than \$5 million.

**ECONOMIC ASSUMPTIONS
FY 2009 President's Budget**

Fiscal Year	Civilian TUR (%)	IUR (%)	Change in GDP Price Index (%)	Real GDP Growth (%)
2007	4.6	1.9	2.7	2.2
2008	4.9	2.0	1.9	2.7
2009	4.9	2.0	2.0	2.9
2010	4.8	2.0	2.0	3.0
2011	4.8	2.0	2.0	2.9
2012	4.8	2.0	2.0	2.9
2013	4.8	2.0	2.0	2.8

U.S. UNEMPLOYMENT RATES



FY 2009 President's Budget
Rates are Seasonally Adjusted

Source: USDOL/BLS and USDOL/ETA/OWS
Prepared by: USDOL/ETA/OWS
Division of Fiscal and Actuarial Services

UI PROGRAM ESTIMATES
FY 2009 President's Budget
(Billions of Dollars)

FISCAL YEAR	2008	2009	2010	2011	2012	2013
Civilian TUR (%)	4.9	4.9	4.8	4.8	4.8	4.8
IUR(%)	2.0	2.0	2.0	2.0	2.0	2.0
Coverage (millions)	133.8	135.0	136.1	137.0	137.9	138.7
AWBA (Regular)	283.56	294.65	304.80	315.85	327.69	340.07
Benefit Outlays (All Programs)	34.95	37.57	39.00	40.95	42.68	44.55
<u>STATE UI</u>						
Beneficiaries (millions)	7.9	8.2	8.2	8.3	8.3	8.3
Regular Benefit Exhaustions (millions)	2.8	2.9	2.8	2.8	2.9	2.9
Regular Benefits Paid EB (State Share)	33.55 (1)	36.10 0.00	37.49 0.00	39.26 0.00	41.07 0.00	42.92 0.00
State Collections Interest Earned	35.75 1.92	37.18 2.11	37.88 2.26	38.57 2.37	39.62 2.43	41.11 2.49
<u>FEDERAL ACCOUNTS</u>						
FUTA Collections (2)	7.54	6.33	5.90	6.04	6.18	6.32
-To EUCA (3)	1.51	1.27	0.00	0.00	0.00	0.00
-To ESAA	6.03	5.06	5.90	6.04	6.18	6.32
Outlays						
-Federal EB Share	(1)	0.00	0.00	0.00	0.00	0.00
-TEUC	0.00	0.00	0.00	0.00	0.00	0.00
-Administrative Costs	3.68	3.63	3.05	3.01	3.01	3.00
FECA Outlays	0.75	0.80	0.80	0.97	0.86	0.85
-UCFE	0.31	0.33	0.36	0.52	0.39	0.38
-UCX	0.45	0.47	0.44	0.45	0.46	0.47
Trade	0.90	0.94	0.96	0.99	1.01	1.04
-Benefits	0.64	0.68	0.70	0.73	0.75	0.78
-Training	0.26	0.26	0.26	0.26	0.26	0.26

(1) Less than \$5 million.

(2) Excluding Reduced Credits

(3) Starting in 2010, no FUTA collections are transferred to EUCA since the EUCA balance exceeds its ceiling

Note: Administrative costs for years beyond 2009 are based on growth factors applied to all programs in the Federal budget.

COMPARISON OF PROJECTIONS
(Billions of Dollars)

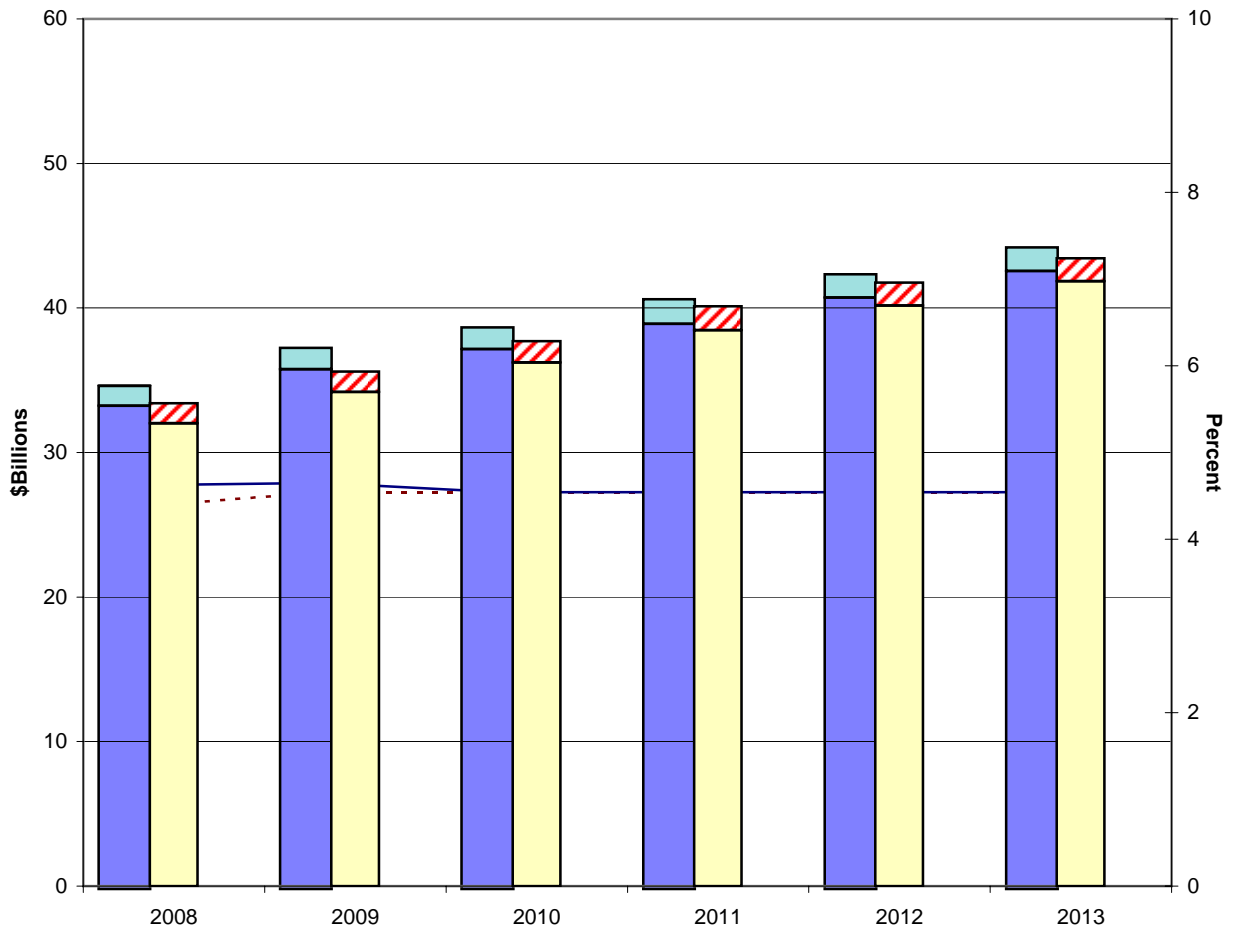
	FY 2009 President's Budget		FY 2008 Midsession Review	
	FY 2008	FY 2009	FY 2008	FY 2009
Civilian TUR (%)	4.9	4.9	4.7	4.8
IUR (%)	2.0	2.0	1.9	2.0
AWBA	283.56	294.65	280.12	288.44
Benefits				
-Regular	33.55	36.10	32.02	34.18
-EB	0.01	0.00	0.00	0.00
Revenues				
-State	35.75	37.18	36.24	36.35
-FUTA (2)	7.54	6.33	6.28	5.84
State Loans				
-Loans	0.62	1.13	0.48	0.29
-Repayments	0.57	0.95	0.48	0.29
-Interest	(1)	0.01	0.00	0.00
-Balance	0.05	0.23	0.00	0.00
Balances				
-State Accounts (3)	44.63	47.48	49.81	54.08
-EUCA	21.43	25.22	21.04	24.70
-FUA	14.97	15.51	14.97	15.70

(1) Less than \$5 million

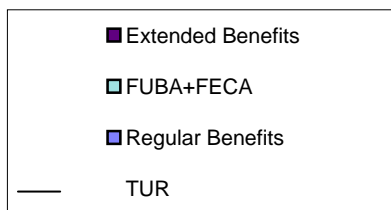
(2) Excluding reduced credits

(3) Net balances excluding loans

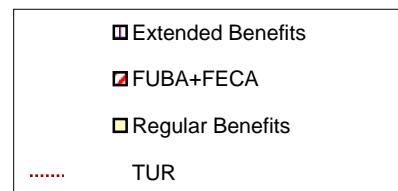
UI Program Estimates



FY 2009 President's Budget



FY 2008 Midsession Review



HISTORICAL UI PROGRAM STATISTICS (Billions of Dollars)

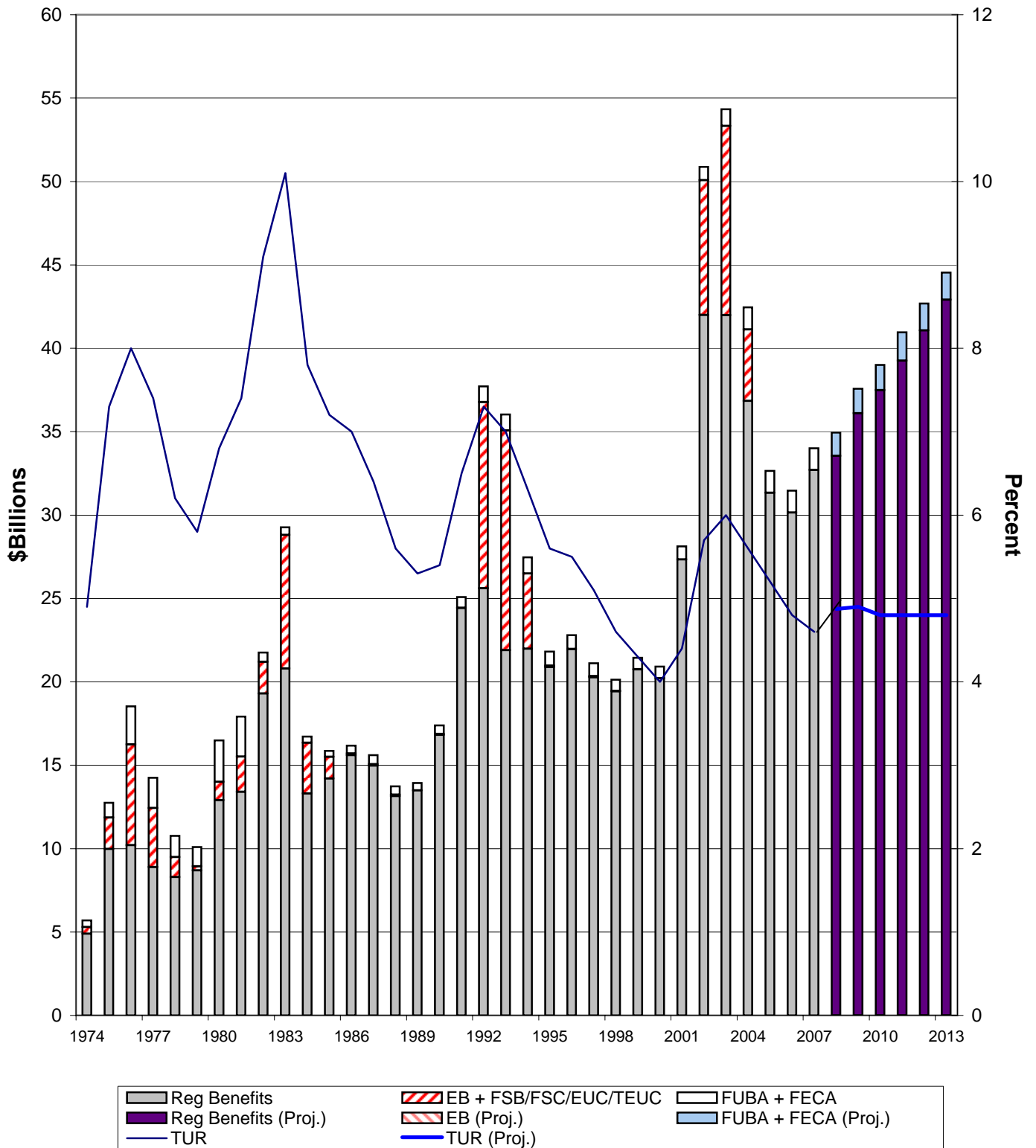
FISCAL YEAR	2001	2002	2003	2004	2005	2006	2007
Civilian TUR (%)	4.4	5.7	6.0	5.6	5.2	4.8	4.6
IUR (%)	2.1	2.8	2.8	2.5	2.1	2.0	1.9
Coverage (millions)	128.5	126.6	126.1	127.0	129.4	131.3	133.4
AWBA (Regular)	227.00	247.53	253.59	253.61	257.9	265.5	276.37
Benefit Outlays (All Programs)	28.13	50.88	54.33	42.45	32.61	31.46	32.70
<u>STATE UI</u>							
Beneficiaries (millions)	8.9	10.4	10.2	8.7	8.0	7.4	7.5
Regular Benefit Exhaustions (millions)	2.5	4.2	4.4	3.9	3.0	2.7	2.6
Regular Benefits Paid	27.34	41.99	41.99	36.85	31.22	30.15	31.41
EB (State Share)	(1)	0.08	0.16	0.08	0.00	0.01	0.00
State Collections	20.82	20.91	26.70	32.73	35.08	35.94	33.71
<u>FEDERAL ACCOUNTS</u>							
FUTA Collections (3)	6.94	6.61	6.52	6.59	6.69	7.10	7.29
-To EUCA (2)	0.00	0.97	1.27	1.19	1.51	1.47	1.32
-To ESAA	6.94	5.64	5.25	5.40	5.18	5.63	5.96
Outlays							
-Federal EB Share	(1)	0.08	0.16	0.08	0.00	0.01	0.00
-Administrative Costs	3.61	3.70	4.10	3.88	3.82	3.85	3.68
-TEUC	--	7.92	11.03	4.12	0.00	0.01	0.00
FUBA/FECA Outlays	0.79	0.81	0.99	1.32	1.38	1.31	1.30
-UCFE-UCX	0.51	0.52	0.63	0.79	0.79	0.80	0.74
-Trade	0.27	0.29	0.36	0.53	0.59	0.51	0.57

(1) Less Than \$5 million

(2) No transfers were made to EUCA in 1999-2001 because the account balance exceeded the ceiling.

(3) Excluding reduced credits.

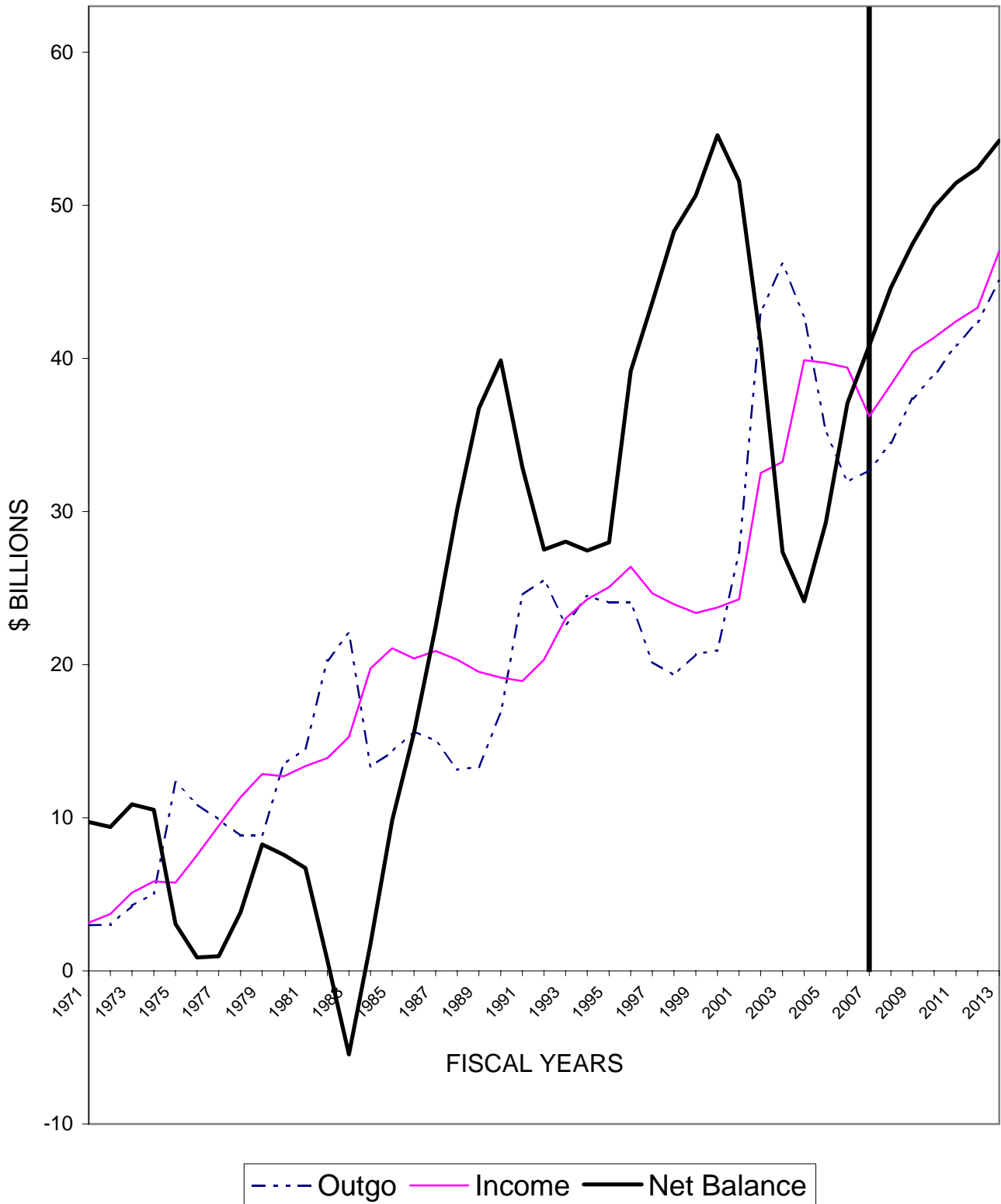
UI PROGRAM OUTLAYS



STATUS OF STATE ACCOUNTS
FY 2009 President's Budget
(Billions of Dollars)

FISCAL YEAR	2007	2008	2009	2010	2011	2012	2013
<u>Income</u>	--	38.30	40.42	41.36	42.42	43.31	47.01
Collections	--	35.75	37.18	37.88	38.57	39.62	41.11
Interest Earnings	--	1.92	2.11	2.26	2.37	2.43	2.49
Loans	--	0.62	1.13	1.22	1.48	1.27	2.11
Excess Reduced Credits	--	0.00	0.00	0.00	0.00	0.00	0.00
Reed Act Transfers		0.00	0.00	0.00	0.00	0.00	1.31
<u>Outgo</u>	--	34.46	37.39	38.90	40.85	42.38	45.05
Benefits	--	33.55	36.10	37.49	39.26	41.07	42.92
Loan Repayments	--	0.57	0.95	1.07	1.28	1.02	1.87
Administration (Reed Act)	--	0.34	0.34	0.34	0.32	0.30	0.27
Balance							
(End of Year)	40.84	44.68	47.71	50.17	51.74	52.67	54.63
Outstanding Loans	0.00	0.05	0.23	0.28	0.29	0.24	0.41
Net Balance							
(Excluding Loans)	40.84	44.63	47.48	49.89	51.46	52.44	54.22

STATE TRUST FUND STATUS



FY 2009 President's Budget

Note: Income and outgo include loans and repayments. Balances are net of loans.

Source: USDOL\ETA\OWS
Division of Fiscal and Actuarial Services

**STATUS OF ADMINISTRATION ACCOUNT (ESAA)
 FY 2009 President's Budget
 (Billions of Dollars)**

FISCAL YEAR	2007	2008	2009	2010	2011	2012	2013
<u>Income</u>	--	6.16	5.17	6.03	6.17	6.32	6.46
FUTA Income	--	6.03	5.06	5.90	6.04	6.18	6.32
General Revenues	--	0.00	0.00	0.00	0.00	0.00	0.00
Interest Earnings	--	0.13	0.11	0.12	0.13	0.13	0.13
<u>Outgo</u>	--	3.68	3.63	3.05	3.01	3.01	3.00
State Administration	--	3.44	3.43	2.85	2.81	2.80	2.79
-UI	--	2.47	2.61	2.55	2.55	2.54	2.53
-ES,BLS,VETS	--	0.97	0.82	0.30	0.26	0.26	0.26
Federal Administration	--	0.24	0.20	0.20	0.21	0.21	0.21
Preliminary Balance (End of Year)	3.80	3.92	2.95	4.17	4.30	4.46	4.61
FUA/EUCA Overflow	0.00	0.00	1.16	0.00	0.00	0.00	0.00
Balance	3.80	3.92	4.11	4.17	4.30	4.46	4.61
-Ceiling (2)	1.44	1.42	1.20	1.15	1.16	1.15	1.15
-Excess	2.36	2.50	2.91	3.02	3.14	3.31	3.46
To EUCA	2.36	2.50	0.00	0.07	0.12	0.10	0.03
To FUA	0.00	0.00	2.91	2.95	3.02	1.90	0.27
To States (Reed Act)	0.00	0.00	0.00	0.00	0.00	1.31	3.16

(1) Less than \$5 million

(2) Statutory ceiling is 40% of current year's appropriation

Note: Administrative costs for years beyond 2009 are based on growth factors applied to all programs in the Federal budget.

STATUS OF EXTENDED BENEFIT ACCOUNT (EUCA)
FY 2009 President's Budget
(Billions of Dollars)

FISCAL YEAR	2007	2008	2009	2010	2011	2012	2013
<u>Income</u>	--	4.80	4.95	1.23	1.37	1.49	1.55
FUTA Income (3)	--	1.51	1.27	0.00	0.00	0.00	0.00
Interest Earnings	--	0.93	1.18	1.23	1.30	1.37	1.45
Overflow from ESAA	--	2.36	2.50	0.00	0.07	0.12	0.10
<u>Outgo</u>	--	0.00	0.00	0.00	0.00	0.00	0.00
EB Outlays -- Fed Share	--	(1)	0.00	0.00	0.00	0.00	0.00
Balance							
(End of Year)	16.64	21.43	26.38	26.45	27.82	29.31	30.85
-Ceiling (2)	22.57	24.07	25.22	26.52	27.94	29.41	30.89
-Excess	0.00	0.00	1.16	0.00	0.00	0.00	0.00

(1) Less than \$5 million

(2) Statutory ceiling is .5% of covered wages

(3) Starting in 2010, no FUTA collections are transferred to EUCA since the EUCA balance exceeds its ceiling

STATUS OF LOAN ACCOUNT (FUA)
FY 2009 President's Budget
(Billions of Dollars)

FISCAL YEAR	2007	2008	2009	2010	2011	2012	2013
<u>Income</u>	--	1.25	1.67	4.96	5.46	5.54	5.22
Interest Earnings	--	0.67	0.71	0.87	1.02	1.18	1.35
State Repayments	--	0.57	0.95	1.17	1.48	1.32	1.94
State Interest Payments	--	(1)	0.01	0.02	0.02	0.02	0.03
Overflow from ESAA	--	0.00	0.00	2.91	2.95	3.02	1.90
<u>Outgo</u>	--	0.62	1.13	1.22	1.48	1.27	2.11
State Loans	--	0.62	1.13	1.22	1.48	1.27	2.11
Balance							
(End of Year)	14.34	14.97	15.51	19.25	23.23	27.50	30.61
-Ceiling (2)	22.57	24.07	25.22	26.52	27.94	29.41	30.89
-Excess to ESAA	0.00	0.00	0.00	0.00	0.00	0.00	0.00

(1) Less than \$5 million.

(2) Statutory ceiling is 0.5% of covered wages.

DEFINITIONS

EB	Extended Benefits -- Permanent triggered program
ES	Employment Service
ESAA	Employment Security Administration Account Provides grants to states for UI and ES
EUCA	Extended Unemployment Compensation Account Pays Federal share of EB and TEUC
FECA	Federal Employees Compensation Account Pays benefits to UCFE and UCX claimants
FUA	Federal Unemployment Account Makes repayable advances to state trust funds
FUBA	Federal Unemployment Benefits and Allowances Benefit payments to Trade Act claimants
FUTA	Federal Unemployment Tax Act
FY	Fiscal Year
GDP	Gross Domestic Product
IUR	Insured Unemployment Rate
OUTYEARS	Years beyond the budget year
TEUC	Temporary Extended Unemployment Compensation Temporary extended benefit program, March 2002 – January 2005
TUR	Total Unemployment Rate
UCFE	Unemployment Compensation for former Federal Employees
UCX	Unemployment Compensation for ex-Servicemen
UI	Unemployment Insurance
UTF	Unemployment Trust Fund