

Summary Statistics

Table 1. Crude Oil Prices
(Dollars per Barrel)

Year Month	Domestic First Purchase Prices	Average F.O.B. ^a Cost of Crude Oil Imports ^b	Average Landed Cost of Crude Oil Imports ^b	Refiner Acquisition Cost of Crude Oil		
				Domestic	Imported	Composite
1978	9.00	13.29	14.35	10.61	14.57	12.46
1979	12.64	20.07	21.45	14.27	21.67	17.72
1980	21.59	32.37	33.67	24.23	33.89	28.07
1981	31.77	35.15	36.47	34.33	37.05	35.24
1982	28.52	32.02	33.18	31.22	33.55	31.87
1983	26.19	27.81	28.93	28.87	29.30	28.99
1984	25.88	27.60	28.54	28.53	28.88	28.63
1985	24.09	25.84	26.67	26.66	26.99	26.75
1986	12.51	12.52	13.49	14.82	14.00	14.55
1987	15.40	16.69	17.65	17.76	18.13	17.90
1988	12.58	13.25	14.08	14.74	14.56	14.67
1989	15.86	16.89	17.68	17.87	18.08	17.97
1990	20.03	20.37	21.13	22.59	21.76	22.22
1991	16.54	16.89	18.02	19.33	18.70	19.06
1992	15.99	16.77	17.75	18.63	18.20	18.43
1993	14.25	14.71	15.72	16.67	16.14	16.41
1994	13.19	14.18	15.18	15.67	15.51	15.59
1995	14.62	15.69	16.78	17.33	17.14	17.23
1996	18.46	19.32	20.31	20.77	20.64	20.71
1997	17.23	16.94	18.11	19.61	18.53	19.04
1998	10.87	10.76	11.84	13.18	12.04	12.52
1999	15.56	16.47	17.23	17.90	17.26	17.51
2000	26.72	26.27	27.53	29.11	27.70	28.26
2001	21.84	20.46	21.82	24.33	22.00	22.95
2002	22.51	22.63	23.91	24.65	23.71	24.10
2003	27.56	25.86	27.69	29.82	27.71	28.53
2004	36.77	33.75	36.07	38.97	35.90	36.98
2005						
January	40.18	35.76	38.49	41.82	37.56	39.01
February	42.19	39.06	40.71	43.80	39.72	41.05
March	47.56	44.29	45.95	48.87	45.73	46.78
April	47.26	43.90	45.43	49.64	45.25	46.71
May	44.03	42.88	44.51	47.91	43.19	44.84
June	49.83	48.53	49.99	52.13	49.28	50.30
July	53.35	51.87	53.85	55.80	52.79	53.83
August	58.90	57.10	58.33	60.57	58.67	59.30
September	59.64	57.87	58.26	62.84	58.79	60.18
October	56.99	52.69	54.32	60.79	55.31	57.18
November	53.20	48.82	51.03	56.52	49.97	52.13
December	53.24	50.06	52.04	55.89	50.85	52.51
2005	50.28	47.60	49.29	52.94	48.86	50.24
2006						
January	57.85	53.93	55.49	60.22	55.85	57.33
February	55.69	51.34	53.25	58.97	52.80	54.82
March	55.64	54.67	56.59	58.48	55.31	56.38
April	62.52	62.09	63.40	64.06	62.41	62.98
May	64.40	62.95	64.64	67.11	64.39	65.34
June	64.65	61.44	64.42	67.76	63.79	65.13
July	67.71	65.67	67.88	70.55	67.99	68.86
August	67.21	62.68	65.14	70.48	66.45	67.77
September	59.37	54.63	57.20	62.51	57.29	58.92
October	53.26	50.64	52.83	56.67	52.70	54.04
November	52.42	51.48	53.01	55.36	52.70	53.61
December	55.03	52.82	54.53	57.81	54.97	55.98
2006	59.69	57.03	59.11	62.62	59.02	60.24
2007						
January	49.32	48.11	50.53	53.10	49.57	50.77
February	52.94	51.97	54.04	55.72	53.77	54.45
March	54.95	55.46	57.42	57.86	56.31	56.84
April	58.20	59.53	60.99	61.13	60.45	60.68
May	58.90	60.72	62.92	62.04	61.55	61.71
June	62.35	64.38	66.26	64.95	65.24	65.14
July	69.23	69.30	70.51	72.08	70.75	71.24
August	67.77	66.69	69.07	71.57	68.28	69.46
September	73.27	72.21	73.92	75.84	72.34	73.54
October	79.32	78.51	79.45	82.20	78.61	79.87
November	87.16	83.75	84.89	89.25	85.53	86.78
December	85.28	82.85	84.28	88.98	83.21	85.29
2007	66.52	66.36	67.97	69.65	67.04	67.94

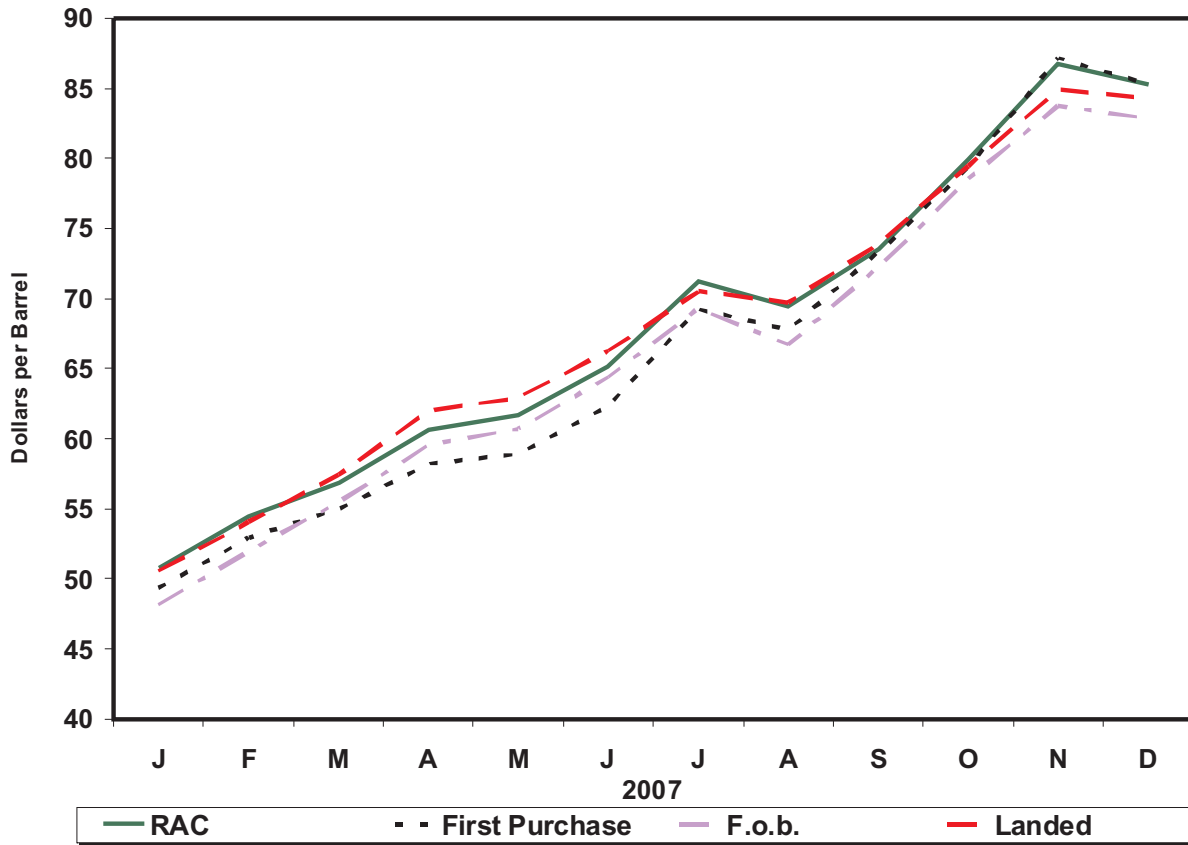
^a Free on Board. See Glossary.

^b Values through 1980 reflect the month of reporting; values since then reflect the month of acquisition, which can be the month of loading, the month of landing, or sometime between those events. Prices for crude oil can be determined at a time other than the acquisition date. See the Explanatory Notes section for additional detail.

Note: In January 2004, new crude streams were added and selected crude streams were discontinued for California, Gulf Coast, Oklahoma, and Texas.

Sources: Domestic first purchase prices -- See "Sources" from Table 21. Crude oil imports costs -- See "Sources" from Table 24. Refiner acquisition costs -- Energy Information Administration, Form FEA-P110-M-1, "Refiners' Monthly Cost Allocation Report," January 1978 through June 1978; Form ERA-49, "Domestic Crude Oil Entitlements Program Refiners' Monthly Report," July 1978 through December 1980; Form EIA-14, "Refiners' Monthly Cost Report," January 1981 to present.

Figure 1. Crude Oil Prices



Sources: Energy Information Administration, Form EIA-182, "Domestic Crude Oil First Purchase Report"; Form EIA-856, "Monthly Foreign Crude Oil Acquisition Report"; and Form EIA-14, "Refiners' Monthly Cost Report."

Table 1A. Refiner Acquisition Cost of Crude Oil by PAD Districts
(Dollars per Barrel)

Year Month	U.S.			PAD District 1			PAD District 2		
	Domestic	Imported	Composite	Domestic	Imported	Composite	Domestic	Imported	Composite
2004	38.97	35.90	36.98	40.75	38.29	38.34	40.80	35.63	38.38
2005									
January	41.82	37.56	39.01	47.29	42.02	42.10	43.95	35.79	40.11
February	43.80	39.72	41.05	47.71	44.85	44.90	45.72	37.51	41.90
March	48.87	45.73	46.78	52.89	50.84	50.89	50.65	42.80	46.99
April	49.64	45.25	46.71	W	49.99	50.05	51.57	41.07	46.88
May	47.91	43.19	44.84	51.67	47.11	47.19	48.95	39.44	44.88
June	52.13	49.28	50.30	55.74	52.22	52.27	52.74	46.19	50.00
July	55.80	52.79	53.83	W	56.53	56.55	56.71	51.55	54.50
August	60.57	58.67	59.30	62.40	62.18	62.18	61.68	55.63	58.90
September	62.84	58.79	60.18	65.25	60.76	60.84	64.34	54.81	60.06
October	60.79	55.31	57.18	63.89	58.91	59.01	61.95	53.17	57.96
November	56.52	49.97	52.13	60.78	55.13	55.23	58.14	48.30	53.54
December	55.89	50.85	52.51	59.92	57.86	57.89	57.06	45.93	51.79
2005	52.94	48.86	50.24	56.89	53.29	53.35	54.57	46.11	50.75
2006									
January	60.22	55.85	57.33	64.04	62.33	62.37	60.66	50.73	55.81
February	58.97	52.80	54.82	63.27	58.17	58.26	60.49	46.39	53.49
March	58.48	55.31	56.38	63.51	60.47	60.52	59.76	47.16	53.78
April	64.06	62.41	62.98	68.46	67.31	67.33	65.07	54.75	60.55
May	67.11	64.39	65.34	70.01	67.96	68.00	68.60	64.17	66.62
June	67.76	63.79	65.13	70.75	67.93	67.99	69.05	62.39	65.94
July	70.55	67.99	68.86	73.76	71.71	71.75	72.22	67.03	69.81
August	70.48	66.45	67.77	73.97	70.38	70.46	71.62	64.50	68.39
September	62.51	57.29	58.92	67.79	61.18	61.31	61.32	53.46	57.67
October	56.67	52.70	54.04	63.46	56.66	56.80	56.88	48.65	53.21
November	55.36	52.70	53.61	59.45	58.36	58.38	56.43	49.10	52.81
December	57.81	54.97	55.98	61.77	59.74	59.79	59.05	52.57	55.99
2006	62.62	59.02	60.24	66.92	63.53	63.60	63.66	55.19	59.70
2007									
January	53.10	49.57	50.77	W	54.21	54.27	53.34	46.35	49.99
February	55.72	53.77	54.45	W	57.68	57.71	57.35	52.68	55.03
March	57.86	56.31	56.84	W	61.38	61.36	60.31	55.23	57.68
April	61.13	60.45	60.68	W	65.70	65.66	62.80	56.44	59.58
May	62.04	61.55	61.71	63.62	67.30	67.23	63.00	57.79	60.67
June	64.95	65.24	65.14	66.31	71.50	71.38	66.31	58.74	63.04
July	72.08	70.75	71.24	68.98	76.59	76.42	73.85	64.87	69.98
August	71.57	68.28	69.46	71.80	70.89	70.91	72.31	65.60	69.23
September	75.84	72.34	73.54	76.58	78.22	78.19	78.06	66.74	73.02
October	82.20	78.61	79.87	81.99	83.63	83.60	84.64	71.66	78.88
November	89.25	85.53	86.78	87.86	89.85	89.81	92.76	81.96	87.25
December	88.98	83.21	85.29	88.79	89.60	89.59	90.84	71.29	81.59
2007	69.65	67.04	67.94	70.62	72.48	72.44	71.10	62.17	66.90

See footnotes at end of table.

Table 1A. Refiner Acquisition Cost of Crude Oil by PAD Districts
(Dollars per Barrel) — Continued

Year Month	PAD District 3			PAD District 4			PAD District 5		
	Domestic	Imported	Composite	Domestic	Imported	Composite	Domestic	Imported	Composite
2004	39.28	34.79	35.87	39.98	35.93	37.81	36.81	38.20	37.30
2005									
January	43.28	36.57	38.03	42.35	38.61	40.48	38.10	38.14	38.12
February	44.78	38.40	39.83	44.06	39.29	41.75	40.59	40.37	40.50
March	49.64	44.83	45.90	50.27	45.14	47.58	46.15	46.54	46.29
April	49.72	44.54	45.69	51.67	43.81	47.64	47.10	46.89	47.02
May	48.59	42.60	44.08	48.65	41.46	44.88	45.53	45.34	45.46
June	52.25	49.02	49.84	51.76	48.96	50.22	51.24	49.51	50.51
July	55.91	51.95	52.90	55.52	53.12	54.17	54.50	52.87	53.84
August	60.70	58.14	58.71	60.77	57.64	59.00	59.08	60.18	59.53
September	62.97	58.96	59.90	62.27	55.53	58.77	60.94	60.67	60.82
October	61.37	54.16	55.71	60.09	54.19	56.96	58.65	57.20	58.02
November	56.93	47.95	49.87	56.88	50.70	53.65	54.14	52.24	53.33
December	56.36	49.69	51.11	55.80	48.44	51.96	54.15	53.05	53.70
2005	53.17	47.77	48.99	53.50	48.54	50.89	50.61	50.77	50.67
2006									
January	60.29	55.35	56.52	59.59	52.50	55.79	59.70	57.13	58.65
February	59.77	52.48	54.20	56.90	48.71	52.63	56.59	55.67	56.18
March	59.58	55.85	56.74	53.19	48.81	51.31	56.64	57.25	56.92
April	64.90	62.91	63.39	61.18	58.44	59.93	62.17	64.13	63.08
May	67.43	62.99	64.07	66.25	65.15	65.69	64.93	66.03	65.41
June	68.43	62.63	64.06	64.99	62.33	63.64	65.75	64.79	65.29
July	70.50	66.99	67.87	69.72	66.71	68.12	68.60	69.24	68.89
August	70.51	65.39	66.61	69.12	64.68	66.81	68.95	68.08	68.50
September	63.71	56.16	58.06	61.23	53.98	57.71	63.10	61.53	62.29
October	57.87	51.57	53.15	54.45	48.22	51.13	54.97	57.84	56.34
November	56.51	51.82	53.09	53.37	47.29	50.14	52.78	54.51	53.49
December	58.27	54.17	55.29	56.26	51.30	53.69	55.85	56.02	55.92
2006	63.17	58.34	59.54	60.80	56.17	58.45	60.90	61.44	61.15
2007									
January	54.68	48.87	50.33	50.23	47.84	48.95	51.32	50.27	50.89
February	56.67	52.92	53.92	52.89	51.92	52.41	53.13	54.28	53.58
March	57.94	55.26	55.94	55.14	52.99	54.10	55.50	56.58	55.95
April	61.87	60.11	60.59	58.22	55.87	57.11	58.82	60.64	59.66
May	62.61	60.55	61.03	58.85	57.98	58.45	60.81	61.84	61.31
June	65.08	64.81	64.88	61.93	58.57	60.42	63.84	66.63	65.12
July	72.72	70.44	71.08	68.18	64.13	66.29	69.88	72.14	70.86
August	72.52	67.41	68.91	66.87	66.02	66.48	70.24	71.10	70.63
September	76.30	71.46	72.74	71.43	65.88	68.66	73.52	75.67	74.55
October	82.30	78.61	79.68	77.13	67.44	72.22	80.10	81.75	80.89
November	89.96	84.69	86.07	84.09	77.66	81.20	85.64	88.54	86.95
December	90.04	83.84	85.69	81.77	66.72	75.59	87.00	87.77	87.32
2007	70.58	66.34	67.48	65.79	60.81	63.43	67.47	69.42	68.34

W = Withheld to avoid disclosure of individual company data.

Notes: U.S. is defined as the 50 states, the District of Columbia, Puerto Rico, the Virgin Islands, and all American territories and possessions. Values reflect the PAD District in which the crude oil is intended to be refined.

Source: Form EIA-14, "Refiners' Monthly Cost Report," January 2004 to present.

Table 2. U.S. Refiner Prices of Petroleum Products to End Users
(Cents per Gallon Excluding Taxes)

Year Month	Motor Gasoline	Aviation Gasoline	Kerosene- Type Jet Fuel	Propane (Consumer Grade)	Kerosene	No. 1 Distillate	No. 2 Distillate			No. 4 Fuel ^a	Residual Fuel Oil
							No. 2 Diesel Fuel	No. 2 Fuel Oil	Average		
1978	48.4	51.6	38.7	33.5	42.1	41.0	37.7	40.0	39.6	31.1	29.8
1979	71.3	68.9	54.7	35.7	58.5	57.2	58.5	51.6	55.1	47.9	43.6
1980	103.5	108.4	86.8	48.2	90.2	83.4	81.8	78.8	80.4	68.2	60.7
1981	114.7	130.3	102.4	56.5	112.3	103.9	99.5	91.4	95.8	79.7	75.6
1982	106.0	131.2	96.3	59.2	108.9	102.3	94.2	90.5	92.5	75.0	67.6
1983	95.4	125.5	87.8	70.9	96.1	96.2	82.6	91.6	83.9	76.6	65.1
1984	90.7	123.4	84.2	73.7	103.6	92.7	82.3	91.6	83.7	79.6	68.7
1985	91.2	120.1	79.6	71.7	103.0	88.0	78.9	84.9	79.9	77.3	61.0
1986	62.4	101.1	52.9	74.5	79.0	62.0	47.8	56.0	49.1	48.9	34.3
1987	66.9	90.7	54.3	70.1	77.0	60.4	55.1	58.1	55.6	51.3	42.3
1988	67.3	89.1	51.3	71.4	73.8	56.4	50.0	54.4	50.7	46.1	33.4
1989	75.6	99.5	59.2	61.5	70.9	66.1	58.5	58.7	58.5	51.2	38.5
1990	88.3	112.0	76.6	74.5	92.3	81.9	72.5	73.4	72.6	62.2	44.4
1991	79.7	104.7	65.2	73.0	83.8	74.0	64.8	66.5	65.0	58.0	34.0
1992	78.7	102.7	61.0	64.3	78.8	66.6	61.9	62.7	62.0	52.6	33.6
1993	75.9	99.0	58.0	67.3	75.4	66.6	60.2	60.2	60.2	50.1	33.7
1994	73.8	95.7	53.4	53.0	66.0	64.0	55.4	57.2	55.6	50.1	35.2
1995	76.5	100.5	54.0	49.2	58.9	62.0	56.0	56.2	56.0	50.5	39.2
1996	84.7	111.6	65.1	60.5	74.0	72.6	68.1	67.3	68.0	60.3	45.5
1997	83.9	112.8	61.3	55.2	74.5	68.9	64.2	63.6	64.2	56.5	42.3
1998	67.3	97.5	45.2	40.5	50.1	55.1	49.4	48.2	49.2	42.8	30.5
1999	78.1	105.9	54.3	45.8	60.5	62.1	58.4	55.8	58.0	47.4	37.4
2000	110.6	130.6	89.9	60.3	112.3	98.8	93.5	92.7	93.4	76.9	60.2
2001	103.2	132.3	77.5	50.6	104.5	90.2	84.2	82.9	84.0	67.9	53.1
2002	94.7	128.8	72.1	41.9	99.0	82.8	76.2	73.7	75.9	65.7	56.9
2003	115.6	149.3	87.2	57.7	122.4	101.7	94.4	93.3	94.2	85.6	69.8
2004	143.5	181.9	120.7	83.9	116.0	126.2	124.3	117.3	123.5	101.7	73.9
2005											
January	139.5	173.8	131.3	NA	174.7	145.8	134.9	138.7	135.4	W	77.2
February	146.8	186.7	137.5	NA	169.9	154.0	144.0	141.4	143.6	W	80.7
March	163.7	201.5	158.5	NA	187.3	170.2	163.0	159.4	162.6	W	89.8
April	180.3	221.7	167.6	96.8	180.4	174.9	169.1	160.7	168.1	W	97.8
May	171.4	212.1	157.3	98.7	172.7	164.9	158.1	148.8	157.2	133.4	103.1
June	172.1	211.6	165.1	98.3	176.7	176.8	169.0	166.9	168.8	W	101.9
July	185.0	223.0	172.4	100.6	178.1	184.1	176.5	171.1	176.0	W	105.1
August	208.0	238.6	185.3	107.7	203.2	201.6	194.6	186.1	193.7	W	110.6
September	241.7	280.8	210.3	120.4	231.2	229.1	218.2	207.8	217.2	182.1	125.2
October	226.2	270.8	235.2	147.2	226.2	248.2	235.4	217.5	233.7	181.7	127.9
November	182.4	218.6	185.3	NA	210.1	210.7	192.5	183.2	191.5	W	120.4
December	173.9	219.3	176.1	152.5	NA	192.6	180.6	186.8	181.4	W	119.5
2005	182.9	223.1	173.5	108.9	195.7	183.2	178.6	170.5	177.7	W	104.8
2006											
January	187.2	239.1	184.2	NA	225.1	194.3	186.3	188.4	186.5	W	123.9
February	183.3	232.4	185.5	138.8	219.1	198.4	188.5	185.5	188.3	W	125.2
March	198.3	247.4	187.5	NA	236.7	202.9	196.1	193.0	195.9	W	125.0
April	233.1	286.9	204.8	129.7	251.6	218.6	216.9	208.3	216.4	W	127.5
May	245.8	301.3	215.6	129.4	255.3	235.7	229.3	212.4	228.6	W	131.7
June	243.6	305.7	215.9	131.3	246.9	234.6	228.1	209.6	227.4	W	128.6
July	252.8	310.3	217.8	136.8	NA	239.9	231.7	214.2	231.1	W	127.8
August	248.6	305.8	222.9	136.8	NA	252.8	241.7	221.2	241.0	W	130.3
September	207.6	253.2	199.8	126.6	251.3	222.6	209.0	191.3	208.4	W	116.0
October	178.9	238.5	183.2	131.0	255.5	206.8	191.1	190.3	191.0	W	109.3
November	178.8	235.3	179.9	130.8	241.4	216.7	192.3	192.1	192.3	W	108.7
December	186.8	234.9	193.5	138.4	NA	218.6	197.0	198.5	197.1	W	109.9
2006	212.8	268.2	199.8	135.8	224.4	213.7	209.6	198.2	209.1	W	121.8
2007											
January	179.1	217.9	175.8	NA	194.4	201.3	183.0	189.4	183.3	W	105.8
February	184.2	228.5	179.0	155.3	NA	198.7	189.8	203.1	190.5	W	112.6
March	213.8	262.7	187.2	NA	232.5	208.2	205.6	205.0	205.5	W	115.0
April	240.5	296.9	203.9	127.2	236.1	220.7	220.2	210.3	219.9	W	120.9
May	266.9	309.6	210.5	129.8	W	218.5	218.5	208.3	218.2	W	130.0
June	256.9	297.8	213.2	130.9	W	223.8	222.6	210.2	222.3	W	135.7
July	248.8	305.3	218.5	127.8	236.2	233.2	230.1	217.6	229.9	W	141.5
August	232.0	282.3	216.0	138.9	246.7	232.2	228.2	215.0	227.9	189.7	146.2
September	233.7	290.0	225.0	142.8	267.3	241.5	238.1	231.6	238.0	W	145.0
October	235.0	285.5	237.7	155.5	280.1	259.1	249.9	NA	250.0	W	157.3
November	261.4	306.7	268.4	180.6	319.7	279.6	278.2	277.3	278.1	W	180.3
December	255.2	297.5	268.5	NA	330.3	279.9	269.7	277.0	270.1	W	184.2
2007	234.5	284.9	216.5	148.9	226.3	228.6	226.7	224.1	226.6	W	137.4

NA = Not available.

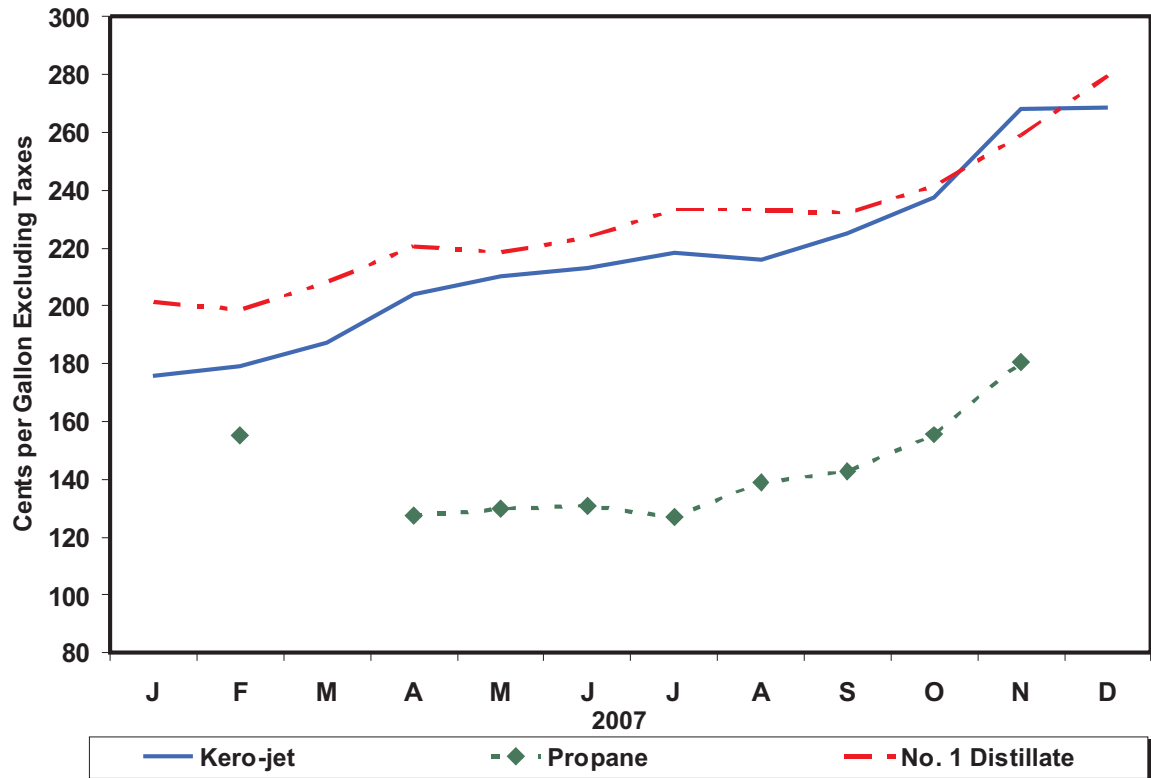
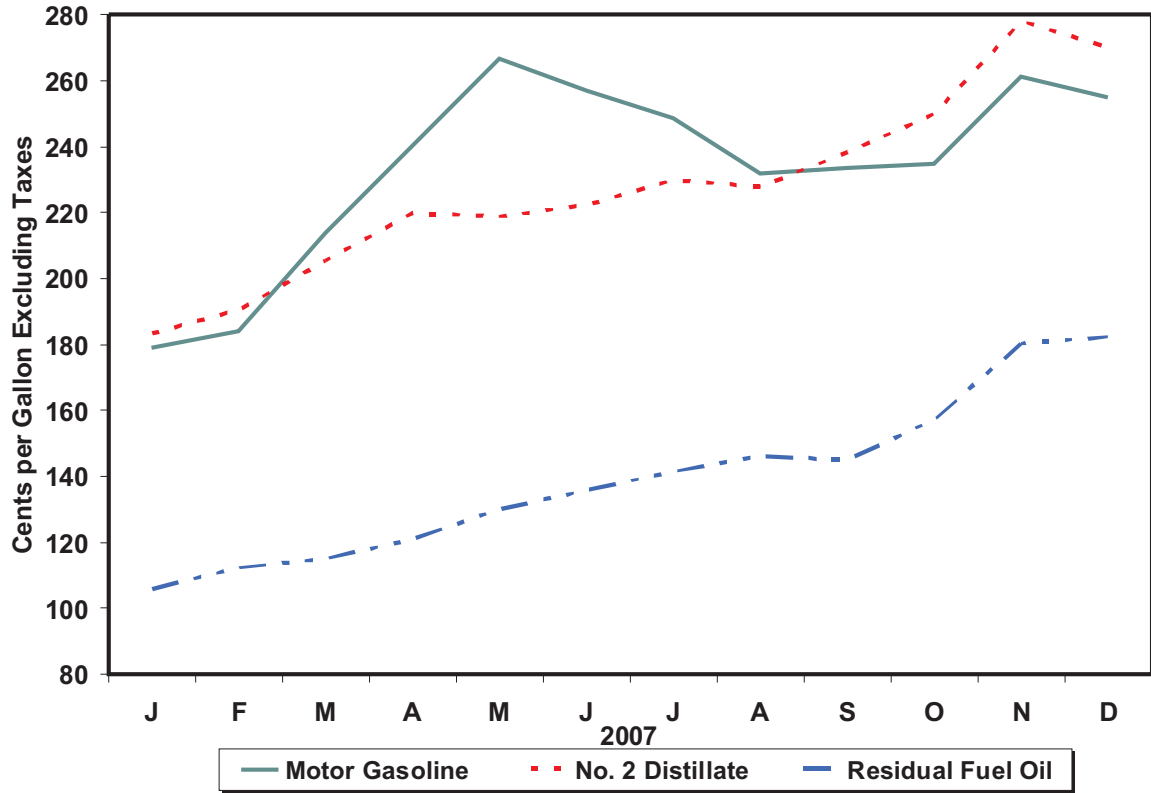
W = Withheld to avoid disclosure of individual company data.

^a Includes No. 4 fuel oil and No. 4 diesel fuel.

Note: Motor gasoline averages and totals prior to October 1993 include leaded gasoline.

Sources: Energy Information Administration Form EIA-782A, "Refiners'/Gas Plant Operators' Monthly Petroleum Product Sales Report," January 1983 forward; Form EIA-460, "Petroleum Industry Monthly Report for Product Prices," source for backcast estimates prior to January 1983.

Figure 2. U.S. Refiner Retail Petroleum Product Prices



Source: Energy Information Administration, Form EIA-782A, "Refiners' /Gas Plant Operators' Monthly Petroleum Product Sales Report."

Table 3. U.S. Refiner Volumes of Petroleum Products to End Users

(Million Gallons per Day)

Year Month	Motor Gasoline	Aviation Gasoline	Kerosene- Type Jet Fuel	Propane (Consumer Grade)	Kerosene	No. 1 Distillate	No. 2 Distillate			No. 4 Fuel ^a	Residual Fuel Oil
							No. 2 Diesel Fuel	No. 2 Fuel Oil	Total		
1983	51.1	0.4	30.8	3.1	0.2	0.5	23.3	3.7	27.0	0.7	28.3
1984	57.6	0.3	32.9	3.3	0.3	0.5	26.3	4.9	31.2	0.7	32.9
1985	57.5	0.3	34.6	3.7	0.3	0.5	25.0	5.0	29.9	0.5	25.2
1986	61.2	0.3	35.1	3.4	0.3	0.4	24.4	4.4	28.8	0.7	31.6
1987	61.0	0.2	36.8	3.8	0.3	0.4	24.1	4.5	28.5	0.8	29.0
1988	61.0	0.2	38.2	4.3	0.3	0.4	24.5	4.6	29.1	1.1	30.2
1989	61.2	0.2	40.1	2.8	0.3	0.5	24.3	4.5	28.8	0.9	30.4
1990	60.3	0.2	39.9	2.7	0.2	0.5	22.2	3.6	25.9	0.8	25.9
1991	61.2	0.2	38.5	3.1	0.2	0.5	21.1	3.2	24.4	0.7	24.0
1992	59.0	0.2	39.8	3.8	0.2	0.5	21.5	3.1	24.6	0.6	22.4
1993	57.2	0.2	41.7	3.5	0.2	0.4	20.8	2.9	23.8	0.6	17.2
1994	55.0	0.2	45.2	2.2	0.4	0.4	21.3	3.4	24.6	0.8	13.5
1995	55.9	0.2	45.7	3.2	0.6	0.3	21.6	3.3	24.9	0.5	11.6
1996	57.5	0.2	48.7	3.1	0.4	0.3	21.9	3.1	25.0	0.4	12.9
1997	61.1	0.2	49.7	3.2	0.3	0.4	22.0	3.0	25.0	0.3	13.4
1998	63.3	0.2	48.9	3.1	0.4	0.4	21.1	3.2	24.3	0.3	14.4
1999	62.0	0.1	47.0	3.6	0.2	0.3	21.1	3.0	24.1	0.3	13.9
2000	60.9	0.2	49.3	2.9	0.2	0.3	22.6	2.8	25.4	0.3	13.1
2001	62.0	0.1	49.7	3.6	0.2	0.3	22.9	3.0	26.0	0.4	14.8
2002	63.6	0.1	49.1	2.6	0.1	0.3	19.6	3.0	22.6	0.4	10.4
2003	63.8	0.1	44.0	2.5	0.1	0.3	16.7	2.7	19.5	0.3	10.7
2004	58.4	0.1	46.4	2.7	0.5	0.2	16.9	2.4	19.3	0.3	10.2
2005											
January	54.9	0.1	42.3	NA	0.3	0.5	15.7	2.6	18.3	W	11.7
February	58.4	0.1	45.2	NA	0.3	0.4	16.7	2.7	19.4	W	11.9
March	58.3	0.1	45.8	NA	0.1	0.3	17.5	2.2	19.7	W	10.4
April	59.1	0.1	46.1	2.3	0.1	0.2	16.9	2.2	19.1	W	9.2
May	59.5	0.1	44.7	2.3	NA	0.2	17.0	1.9	18.9	0.1	8.5
June	61.7	0.2	49.8	2.5	0.1	0.2	18.4	1.9	20.3	W	9.8
July	61.1	0.1	45.8	2.3	0.1	0.2	16.4	1.7	18.0	W	9.4
August	61.2	0.1	47.9	2.7	NA	0.2	17.8	2.0	19.8	W	10.7
September	57.9	0.1	45.0	3.1	0.1	0.2	17.5	1.9	19.4	0.1	10.4
October	57.1	0.1	42.8	2.7	0.1	0.2	17.2	1.7	18.9	0.2	10.1
November	59.1	0.1	42.3	NA	0.2	0.3	16.7	2.0	18.8	W	11.4
December	59.4	0.1	44.5	3.8	NA	0.4	16.4	2.4	18.8	W	11.4
2005	59.0	0.1	45.2	3.2	0.1	0.3	17.0	2.1	19.1	W	10.4
2006											
January	56.5	0.1	40.6	3.6	0.2	0.4	23.4	2.2	25.6	W	10.6
February	60.0	0.1	41.3	4.2	0.2	0.4	23.5	2.0	25.5	W	11.0
March	59.9	0.1	42.8	2.4	0.1	0.3	24.8	1.9	26.7	W	10.2
April	61.0	0.1	42.4	1.9	NA	0.2	23.6	1.3	25.0	W	10.1
May	60.2	0.1	41.9	1.8	NA	0.2	24.6	1.1	25.6	W	9.4
June	62.0	0.1	44.9	1.8	NA	0.2	25.1	0.9	26.1	W	9.9
July	61.4	0.1	44.0	1.5	NA	0.1	24.1	0.9	25.0	W	10.0
August	62.0	0.1	44.7	1.8	NA	0.1	25.9	0.9	26.8	W	10.8
September	59.8	0.1	41.3	2.6	NA	0.1	24.3	0.9	25.1	W	10.6
October	60.2	0.1	41.0	2.7	NA	0.2	24.7	0.8	25.5	W	10.8
November	58.9	0.1	40.3	3.8	0.1	0.2	22.8	1.0	23.8	W	11.1
December	57.9	0.1	40.1	3.7	0.3	0.3	21.4	1.0	22.4	W	10.0
2006	60.0	0.1	42.1	2.7	0.1	0.2	24.2	1.2	25.4	W	10.4
2007											
January	54.7	0.1	39.4	3.3	0.2	0.3	23.5	1.2	24.7	W	12.2
February	57.0	0.1	40.5	4.3	0.2	0.3	25.8	1.4	27.2	W	12.8
March	57.3	0.1	40.4	3.5	0.1	0.2	24.3	1.1	25.4	W	11.5
April	57.4	0.1	40.9	4.0	0.1	0.2	25.8	0.9	26.6	W	13.0
May	58.7	0.1	40.2	2.8	W	0.1	25.5	0.7	26.2	W	11.0
June	60.9	0.1	42.9	2.3	W	0.1	23.6	0.5	24.1	W	10.3
July	58.8	0.1	42.2	3.4	NA	0.1	22.3	0.4	22.7	W	11.2
August	60.2	0.1	42.5	2.2	NA	0.1	23.9	0.5	24.4	0.2	9.7
September	57.9	0.1	38.3	2.7	NA	0.1	22.7	0.4	23.1	W	10.7
October	57.8	0.1	39.0	3.4	NA	0.1	23.5	0.4	23.9	W	10.2
November	56.6	0.1	38.2	3.5	0.1	0.2	21.7	1.0	22.7	W	9.6
December	54.7	0.1	37.1	3.9	0.1	0.2	20.1	1.1	21.2	W	9.1
2007	57.7	0.1	40.1	3.3	0.1	0.2	23.6	0.8	24.3	W	10.9

NA = Not available.

W = Withheld to avoid disclosure of individual company data.

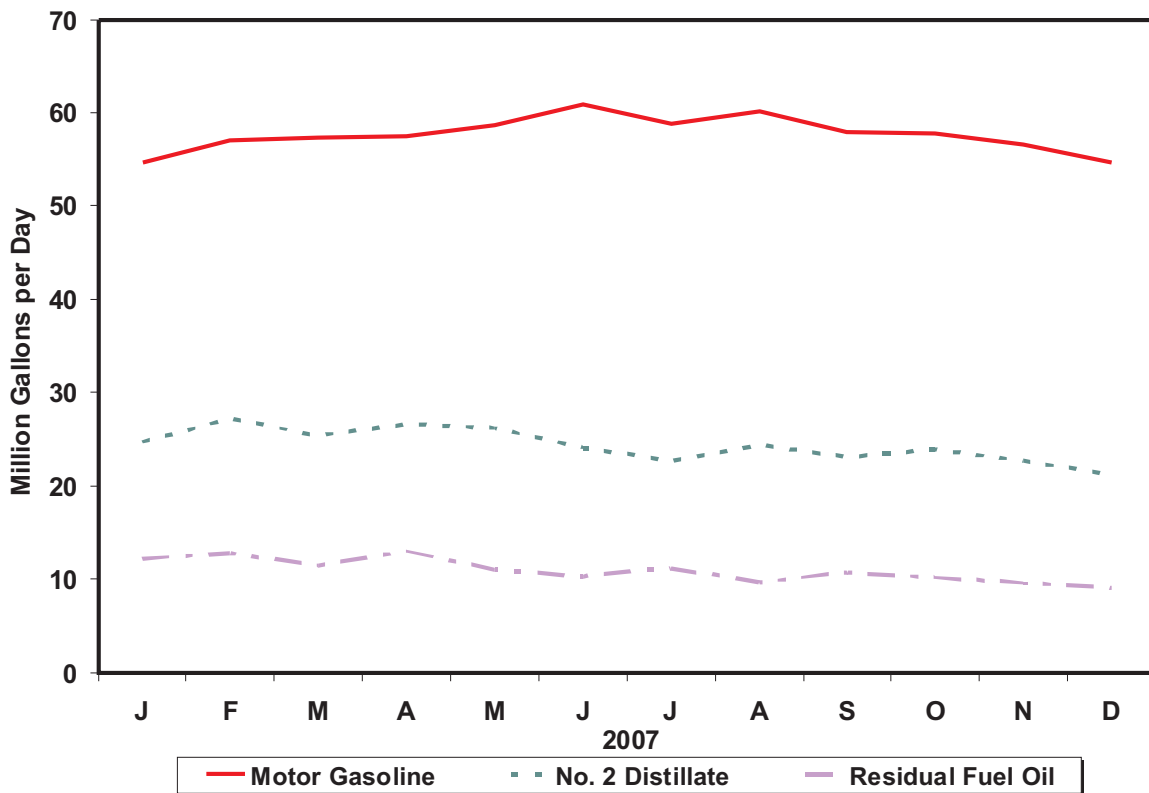
^a Includes No. 4 fuel oil and No. 4 diesel fuel.

Note: Motor gasoline averages and totals prior to October 1993 include leaded gasoline.

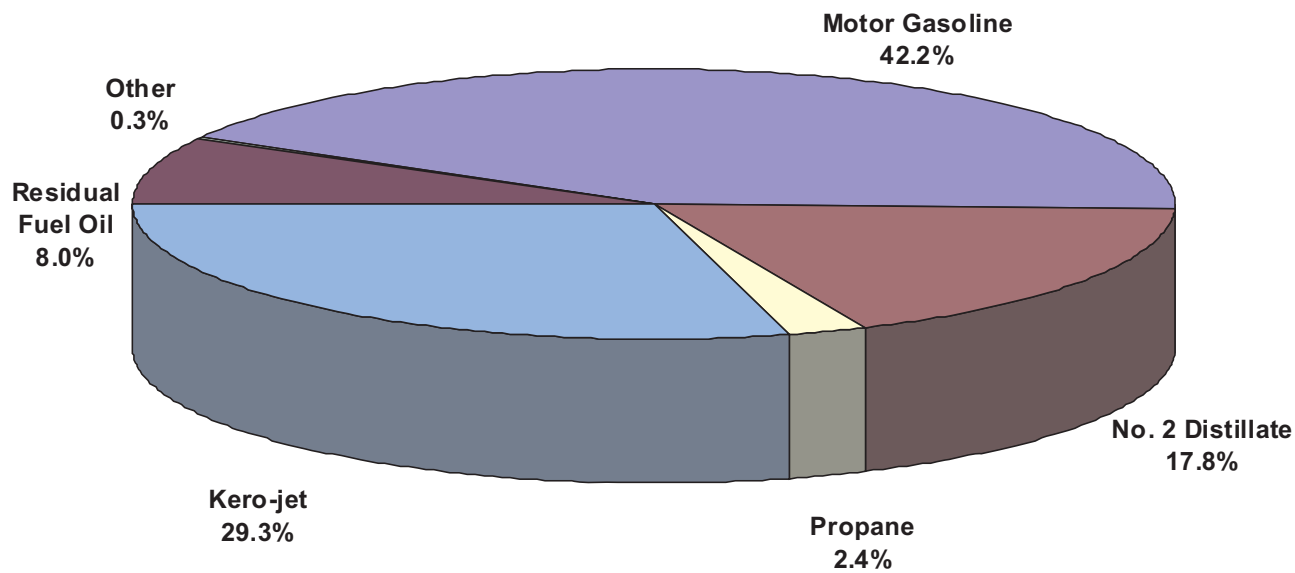
Note: Totals may not equal the sum of the components due to rounding.

Source: Energy Information Administration Form EIA-782A, "Refiners'/Gas Plant Operators' Monthly Petroleum Product Sales Report."

Figure 3. U.S. Refiner Retail Petroleum Product Volumes



Percentages of Refiner Retail Volumes



Source: Energy Information Administration, Form EIA-782A, "Refiners' /Gas Plant Operators' Monthly Petroleum Product Sales Report."

Table 4. U.S. Refiner Prices of Petroleum Products for Resale

(Cents per Gallon Excluding Taxes)

Year Month	Motor Gasoline	Aviation Gasoline	Kerosene- Type Jet Fuel	Propane (Consumer Grade)	Kerosene	No. 1 Distillate	No. 2 Distillate			No. 4 Fuel ^a	Residual Fuel Oil
							No. 2 Diesel Fuel	No. 2 Fuel Oil	Average		
1978	43.4	53.7	38.6	23.7	40.4	40.6	36.5	36.9	36.7	30.5	26.3
1979	63.7	72.1	66.0	29.1	62.4	58.3	57.4	56.9	57.1	47.0	39.9
1980	94.1	112.8	86.8	41.5	86.4	88.0	80.1	80.3	80.2	67.0	52.8
1981	106.4	125.0	101.2	46.6	106.6	107.1	97.2	97.6	97.4	78.3	66.3
1982	97.3	122.8	95.3	42.7	101.8	103.8	91.4	91.4	91.4	73.7	61.2
1983	88.2	117.8	85.4	48.4	89.2	89.6	80.8	81.5	81.2	72.6	60.9
1984	83.2	116.5	83.0	45.0	91.6	89.2	80.3	82.1	81.3	70.7	65.4
1985	83.5	113.0	79.4	39.8	87.4	86.3	77.2	77.6	77.4	67.2	57.7
1986	53.1	91.2	49.5	29.0	60.6	57.9	45.2	48.6	47.0	40.9	30.5
1987	58.9	85.9	53.8	25.2	59.2	59.9	53.4	52.7	53.1	46.2	38.5
1988	57.7	85.0	49.5	24.0	54.9	54.9	47.3	47.3	47.3	42.5	30.0
1989	65.4	95.0	58.3	24.7	66.9	66.8	56.7	56.5	56.6	48.0	36.0
1990	78.6	106.3	77.3	38.6	83.9	83.8	69.4	69.7	69.5	59.0	41.3
1991	69.9	100.1	65.0	34.9	72.3	73.0	61.5	62.2	61.8	55.6	31.4
1992	67.7	99.1	60.5	32.8	63.2	65.2	59.1	57.9	58.5	49.5	30.8
1993	62.6	96.5	57.7	35.1	60.4	64.6	57.0	54.4	55.9	48.8	29.3
1994	59.9	93.3	53.4	32.4	61.8	61.5	52.9	50.6	52.2	46.2	31.7
1995	62.6	97.5	53.9	34.4	58.0	62.5	53.8	51.1	53.0	46.3	36.3
1996	71.3	105.5	64.6	46.1	71.4	75.1	65.9	63.9	65.3	60.3	42.0
1997	70.0	106.5	61.3	41.6	65.3	72.3	60.6	59.0	60.2	55.1	38.7
1998	52.6	91.2	45.0	28.8	46.5	51.3	44.4	42.2	43.9	38.3	28.0
1999	64.5	100.7	53.3	34.2	55.0	63.4	54.6	49.3	53.6	43.0	35.4
2000	96.3	133.0	88.0	59.5	96.9	101.9	89.8	88.6	89.6	77.8	56.6
2001	88.6	125.6	76.3	54.0	82.1	88.3	78.4	75.6	77.9	69.7	47.6
2002	82.8	114.6	71.6	43.1	75.2	80.5	72.4	69.4	71.8	66.3	53.0
2003	100.2	128.8	87.1	60.7	95.5	103.3	88.3	88.1	88.2	79.3	66.1
2004	128.8	162.7	120.8	75.1	127.1	128.9	118.7	112.5	117.8	103.3	68.1
2005											
January	128.2	160.4	131.7	NA	145.2	142.8	130.6	131.4	130.8	W	72.1
February	134.2	171.4	138.3	NA	145.4	151.0	139.1	134.4	138.1	W	72.2
March	153.0	189.3	158.2	NA	164.5	168.1	158.8	153.5	158.0	115.9	82.9
April	164.4	204.1	165.5	86.0	164.5	173.9	163.8	155.9	162.8	127.8	89.6
May	154.1	195.2	155.8	82.0	153.8	160.7	152.2	144.4	151.3	W	89.1
June	160.7	197.0	165.0	83.0	171.0	175.3	167.0	159.1	165.9	131.6	90.5
July	171.4	210.2	171.2	86.0	176.5	178.4	171.5	164.7	170.6	W	101.1
August	195.5	230.4	184.7	93.2	194.3	195.2	189.8	178.4	188.3	152.0	115.1
September	220.6	264.7	206.9	108.2	221.3	220.6	212.7	199.3	211.0	169.1	121.9
October	197.0	245.1	233.5	111.6	227.1	230.9	232.3	207.1	229.0	W	124.7
November	160.1	199.3	181.4	103.3	196.5	199.8	182.6	175.2	181.6	W	111.4
December	160.8	200.4	173.8	106.8	195.0	199.1	175.5	172.4	175.0	166.3	119.6
2005	167.0	207.6	172.3	93.3	175.7	180.1	173.7	162.3	172.0	137.7	97.1
2006											
January	174.9	218.7	182.4	104.4	191.7	194.4	181.0	175.6	180.1	133.2	118.2
February	166.0	209.6	182.5	97.5	184.7	182.9	180.6	171.1	178.8	W	119.4
March	187.1	228.2	185.9	96.7	197.9	197.0	190.1	179.1	188.4	142.2	119.2
April	219.7	265.6	203.1	102.3	218.2	204.5	212.2	197.2	210.4	168.7	118.0
May	226.3	274.3	213.1	102.9	NA	212.0	218.6	201.4	216.8	144.2	124.3
June	227.9	274.6	213.2	106.7	219.4	NA	218.7	198.4	216.8	141.5	116.9
July	239.5	287.3	217.3	110.8	225.8	235.7	225.1	199.9	222.8	151.0	119.5
August	226.0	284.1	221.5	111.3	229.3	242.4	234.0	206.2	231.5	142.4	124.6
September	180.0	231.9	194.7	103.2	203.7	208.8	191.1	179.7	190.0	129.6	107.3
October	164.1	212.0	181.3	100.3	193.5	205.1	182.7	171.6	181.7	123.8	102.5
November	166.7	213.9	177.4	101.3	194.4	220.9	186.7	169.9	184.9	129.3	102.5
December	172.8	217.2	190.6	103.3	200.7	223.7	188.6	175.3	186.7	126.9	104.3
2006	196.9	249.0	196.1	103.1	200.7	204.4	201.2	183.4	199.1	139.5	113.6
2007											
January	157.0	204.3	172.7	99.5	180.6	195.5	169.5	161.2	168.4	116.9	97.6
February	171.7	218.7	176.6	103.3	194.2	207.9	182.4	172.9	181.1	136.0	107.3
March	199.5	246.1	184.6	104.9	194.3	218.4	197.9	178.1	195.3	138.1	107.6
April	226.4	277.9	202.1	106.7	204.8	230.3	211.6	191.0	210.0	137.8	115.0
May	249.5	304.7	207.9	111.2	207.8	227.7	210.1	194.9	209.3	148.3	123.8
June	236.1	292.4	211.4	109.4	215.7	223.1	214.7	201.4	213.8	154.2	128.0
July	230.7	299.8	216.7	115.9	226.1	243.0	222.0	207.1	221.0	163.9	137.8
August	215.2	282.8	215.1	116.7	222.2	237.3	219.3	202.1	218.1	151.8	136.7
September	219.5	283.0	225.6	124.8	245.0	253.8	232.2	213.3	230.7	159.6	139.3
October	221.8	276.9	235.3	135.2	252.5	269.9	242.6	226.0	241.3	172.6	153.6
November	245.8	302.0	265.6	147.1	285.4	298.7	269.8	256.9	268.4	200.0	174.2
December	235.8	292.7	265.5	146.1	282.5	292.9	259.9	257.0	259.4	205.4	176.5
2007	218.2	275.8	217.1	119.4	224.9	243.0	220.3	207.2	219.0	155.1	135.0

NA = Not available.

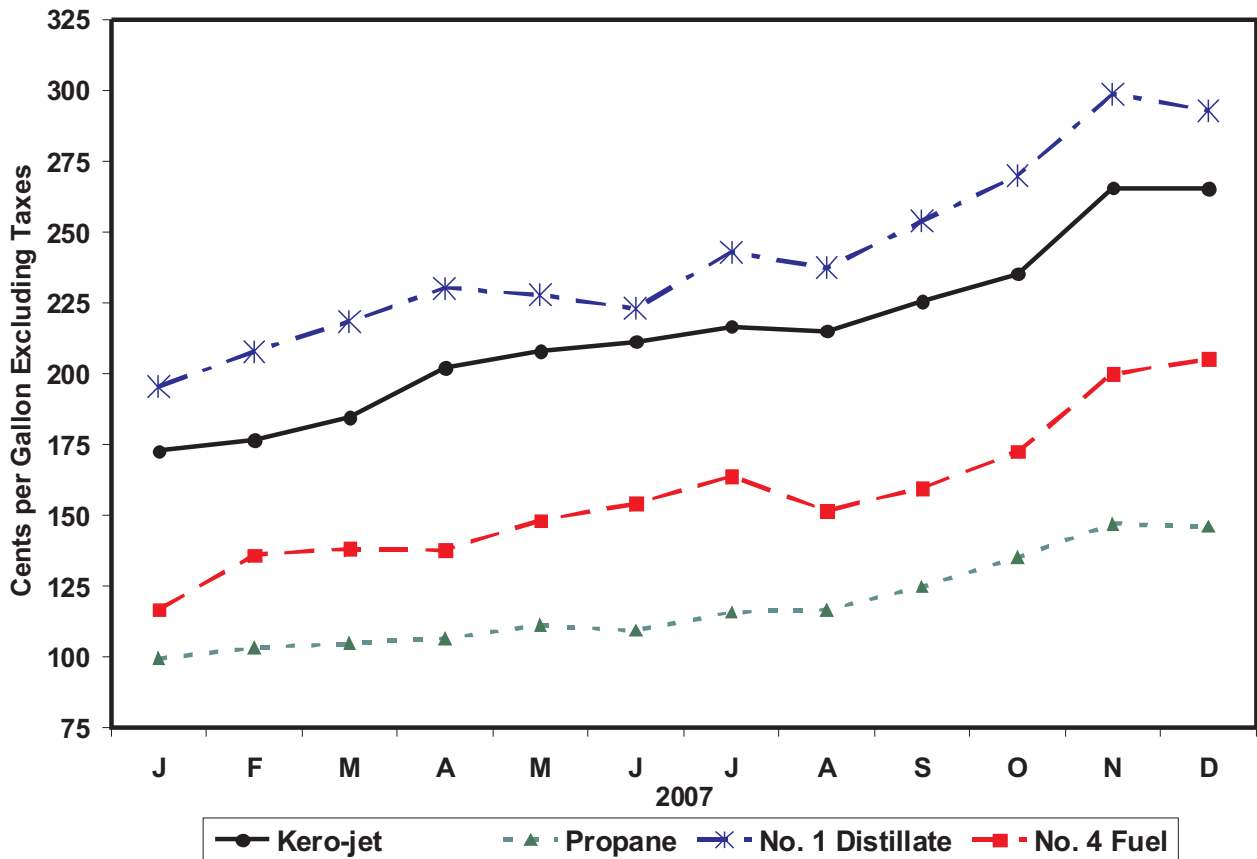
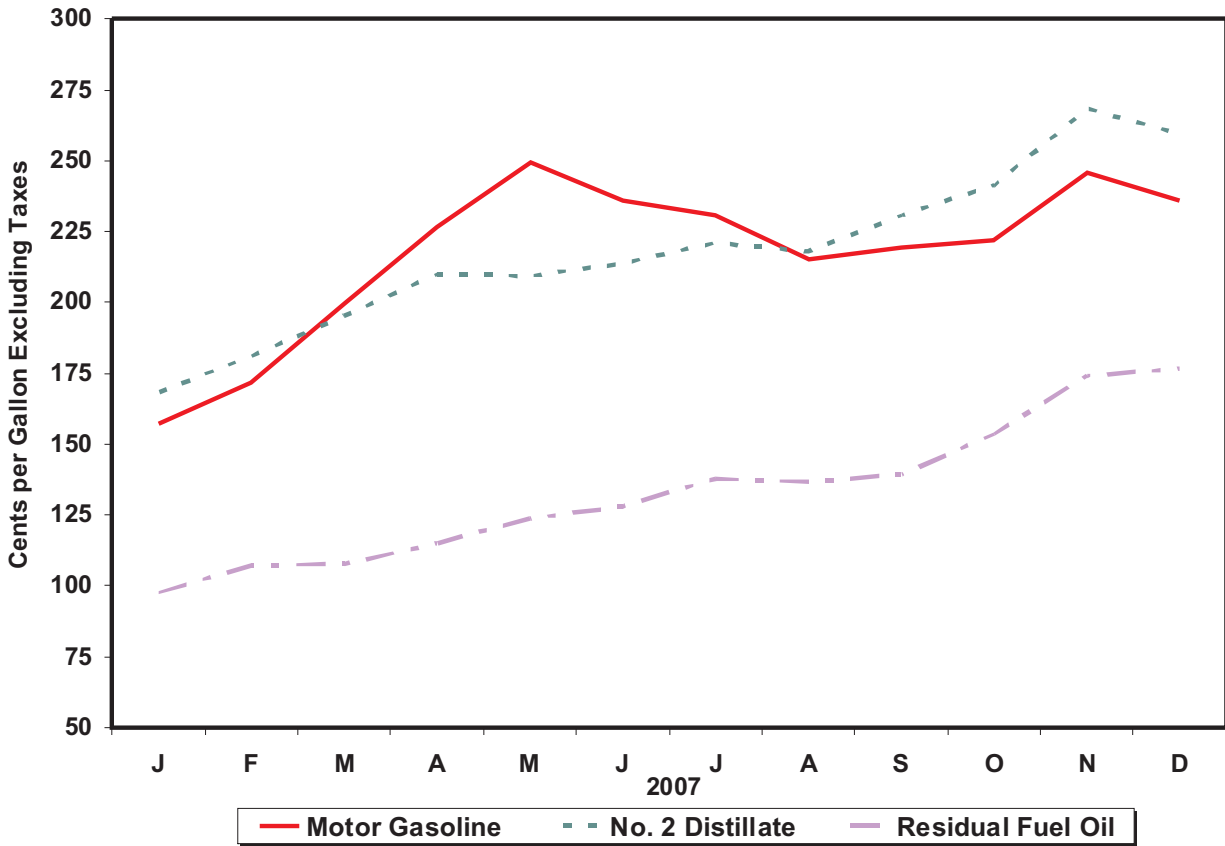
W = Withheld to avoid disclosure of individual company data.

^a Includes No. 4 fuel oil and No. 4 diesel fuel.

Note: Motor gasoline averages and totals prior to October 1993 include leaded gasoline.

Sources: Energy Information Administration Form EIA-782A, "Refiners'/Gas Plant Operators' Monthly Petroleum Product Sales Report," January 1983 forward; Form EIA-460, "Petroleum Industry Monthly Report for Product Prices," source for backcast estimates prior to January 1983.

Figure 4. U.S. Refiner Wholesale Petroleum Product Prices



Source: Energy Information Administration, Form EIA-782A, "Refiners' /Gas Plant Operators' Monthly Petroleum Product Sales Report."

Table 5. U.S. Refiner Volumes of Petroleum Products for Resale
(Million Gallons per Day)

Year Month	Motor Gasoline	Aviation Gasoline	Kerosene- Type Jet Fuel	Propane (Consumer Grade)	Kerosene	No. 1 Distillate	No. 2 Distillate			No. 4 Fuel ^a	Residual Fuel Oil
							No. 2 Diesel Fuel	No. 2 Fuel Oil	Total		
1983	242.5	0.7	5.4	26.0	2.5	2.4	38.1	47.3	85.5	0.9	20.2
1984	246.3	0.8	6.6	26.7	2.2	2.6	42.8	51.4	94.2	1.7	21.3
1985	256.9	0.7	7.6	29.2	2.4	2.7	43.3	53.9	97.3	1.2	19.9
1986	257.2	0.7	9.2	26.3	2.4	2.5	46.4	53.8	100.3	1.2	18.6
1987	257.2	0.8	10.1	27.0	2.3	2.0	44.3	49.3	93.6	1.5	16.9
1988	263.7	0.7	10.0	27.7	2.7	2.6	47.8	50.1	97.9	1.2	18.9
1989	260.7	0.7	8.6	25.9	2.7	2.7	50.7	46.7	97.5	1.2	21.0
1990	264.8	0.7	8.8	25.5	2.2	2.4	51.9	45.9	97.8	0.8	17.9
1991	261.3	0.7	8.7	25.4	2.1	2.4	51.5	46.9	98.3	0.4	17.8
1992	265.4	0.7	8.0	26.7	2.2	2.3	50.8	48.9	99.7	0.4	15.2
1993	266.9	0.6	8.3	27.9	2.3	2.3	58.0	43.6	101.7	0.4	12.6
1994	276.7	0.7	9.1	28.4	2.5	1.9	72.4	32.9	105.3	0.4	12.8
1995	288.8	0.6	9.9	30.6	2.4	1.7	75.9	31.0	106.9	0.3	13.6
1996	293.6	0.6	11.5	32.9	2.7	1.8	83.7	33.1	116.8	0.3	13.8
1997	292.7	0.6	11.3	32.2	2.5	1.6	88.7	31.2	119.9	0.2	11.5
1998	300.4	0.6	12.2	32.7	2.2	1.4	91.9	27.3	119.2	0.1	15.4
1999	306.9	0.7	15.2	33.6	2.4	1.7	95.5	24.3	119.9	0.2	11.5
2000	304.4	0.6	15.7	34.8	2.3	1.5	98.8	23.3	122.1	0.2	10.5
2001	305.2	0.6	14.3	35.0	2.2	1.4	101.3	25.2	126.4	0.1	10.3
2002	311.8	0.6	12.1	32.9	2.0	1.3	100.8	23.6	124.4	0.1	8.8
2003	311.6	0.5	12.2	36.5	2.3	1.2	108.9	20.9	129.8	0.1	6.7
2004	316.4	0.6	12.7	40.3	2.1	1.3	116.5	19.6	136.1	NA	5.9
2005											
January	299.9	0.4	13.6	NA	3.9	3.6	106.7	28.2	134.8	W	5.3
February	314.8	0.4	13.7	NA	3.6	2.2	112.1	28.0	140.1	W	7.0
March	315.0	0.5	14.4	NA	2.0	1.2	121.9	23.1	144.9	0.1	4.9
April	324.9	0.5	16.6	26.3	1.0	0.5	118.6	18.1	136.7	0.1	4.0
May	329.8	0.5	17.7	24.8	0.8	0.3	121.6	16.1	137.7	W	3.9
June	344.1	0.7	15.5	26.8	0.8	0.4	126.1	18.5	144.6	NA	6.6
July	329.4	0.6	17.0	24.9	1.2	0.4	119.3	17.4	136.6	W	4.4
August	341.0	0.7	14.4	26.7	1.7	0.6	128.3	19.0	147.3	NA	3.4
September	312.0	0.6	15.2	30.5	0.9	0.8	120.1	16.5	136.7	NA	3.5
October	310.0	0.4	14.0	36.1	1.5	1.3	117.5	18.2	135.7	W	3.8
November	316.3	0.5	15.5	37.5	2.6	2.4	115.5	18.8	134.2	W	4.3
December	324.1	0.3	14.1	47.2	3.7	3.5	116.4	25.1	141.5	0.1	5.9
2005	321.8	0.5	15.2	35.1	2.0	1.4	118.7	20.6	139.3	NA	4.7
2006											
January	288.1	0.4	14.8	40.9	2.7	2.5	109.7	22.5	132.3	0.3	4.1
February	311.0	0.4	15.4	44.4	2.4	3.3	116.6	26.6	143.3	W	4.1
March	308.7	0.5	16.0	41.0	1.2	1.5	121.8	21.2	143.0	0.4	4.3
April	319.1	0.5	13.3	35.5	0.6	1.0	117.4	15.2	132.7	0.2	4.7
May	322.9	0.7	13.4	31.8	1.0	0.7	123.7	14.2	137.9	0.3	5.6
June	332.6	0.6	15.6	34.9	0.6	0.7	127.7	13.3	141.0	0.4	6.1
July	319.1	0.7	13.7	32.2	0.9	0.4	123.4	12.3	135.7	0.3	7.2
August	334.7	0.7	13.7	36.1	1.0	0.6	129.3	12.7	142.1	0.2	8.5
September	317.4	0.6	18.6	37.6	1.4	0.6	131.7	13.7	145.4	0.2	8.6
October	309.1	0.5	17.1	42.9	1.8	1.1	131.2	14.0	145.2	0.1	6.6
November	308.5	0.5	16.3	44.5	1.9	1.6	128.1	15.6	143.7	0.3	7.3
December	315.4	0.4	15.2	50.7	1.7	1.4	117.5	19.8	137.3	0.3	10.2
2006	315.6	0.5	15.2	39.4	1.4	1.3	123.2	16.7	139.9	0.3	6.5
2007											
January	297.6	0.4	15.2	48.6	2.3	1.8	124.4	17.8	142.1	0.4	8.5
February	310.3	0.4	15.9	50.8	3.3	1.8	130.0	21.5	151.6	0.2	7.3
March	316.4	0.4	16.5	39.3	1.4	0.7	129.7	19.0	148.7	0.3	7.3
April	318.5	0.5	15.0	39.3	1.1	0.3	131.2	10.9	142.1	0.2	8.0
May	330.2	0.5	16.0	36.2	0.6	0.3	136.3	7.9	144.2	0.2	7.9
June	328.1	0.5	16.5	34.7	0.6	0.4	138.9	9.5	148.4	0.2	6.7
July	321.3	0.5	15.1	31.7	0.6	0.2	132.3	9.4	141.7	0.3	7.5
August	330.2	0.6	15.2	36.0	0.7	0.5	143.2	10.5	153.7	0.3	9.5
September	320.8	0.5	15.8	40.0	0.7	0.4	135.5	11.3	146.8	0.2	7.9
October	323.4	0.5	19.9	44.2	1.6	0.8	151.3	13.0	164.3	0.3	9.2
November	318.4	0.4	18.6	45.6	1.6	1.3	139.7	17.2	156.9	0.2	10.1
December	321.6	0.3	18.9	54.7	2.1	1.7	131.2	25.8	157.0	0.3	8.7
2007	319.8	0.5	16.6	41.7	1.4	0.9	135.3	14.5	149.8	0.3	8.2

NA = Not available.

W = Withheld to avoid disclosure of individual company data.

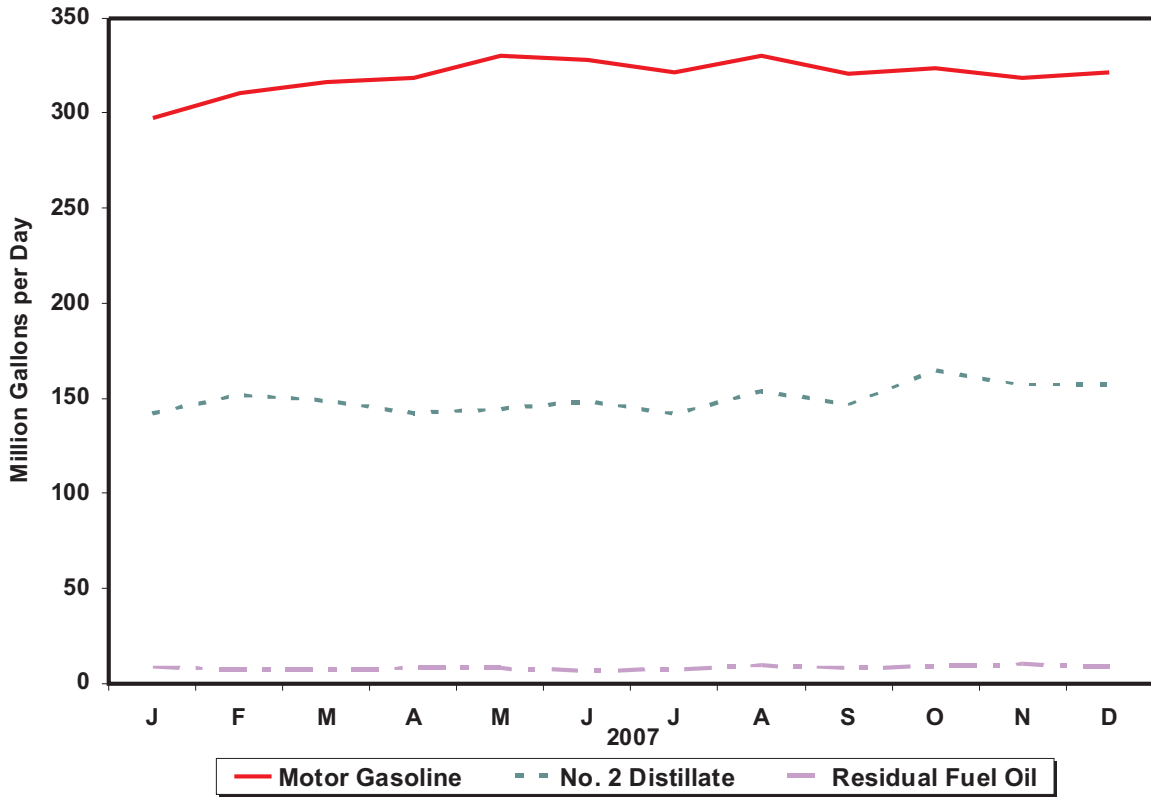
^a Includes No. 4 fuel oil and No. 4 diesel fuel.

Note: Motor gasoline averages and totals prior to October 1993 include leaded gasoline.

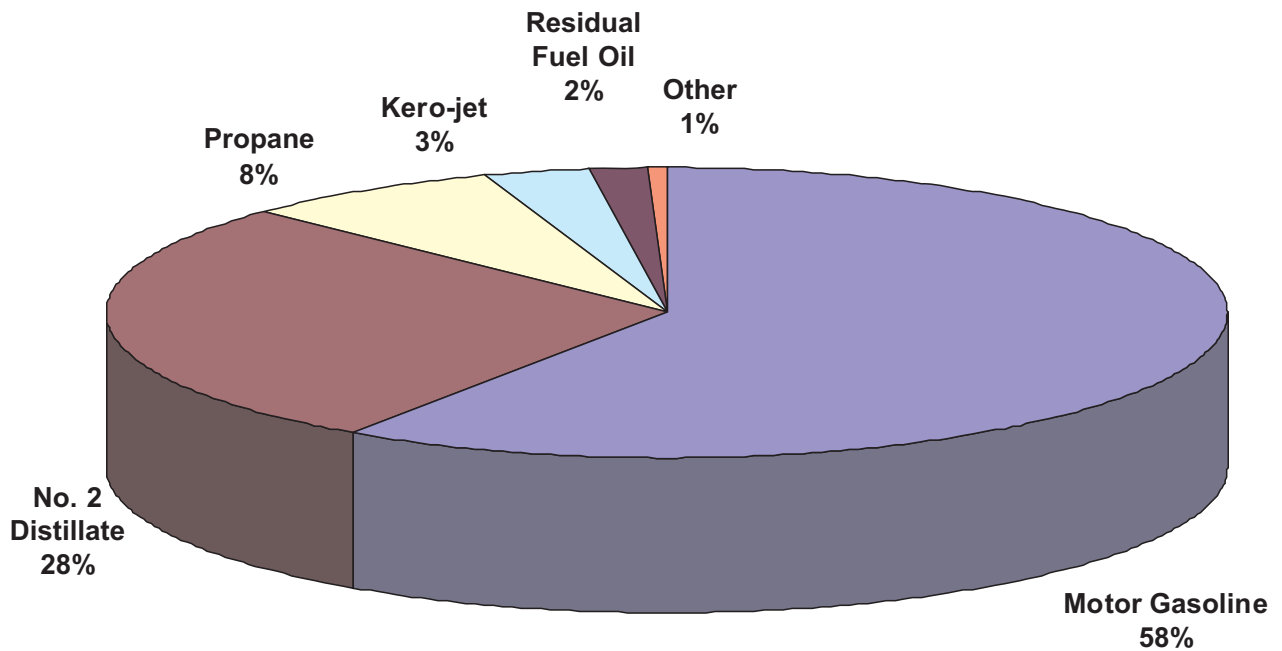
Note: Totals may not equal the sum of the components due to rounding.

Source: Energy Information Administration Form EIA-782A, "Refiners'/Gas Plant Operators' Monthly Petroleum Product Sales Report."

Figure 5. U.S. Refiner Wholesale Petroleum Product Volumes



Percentages of Refiner Wholesale Volumes



Source: Energy Information Administration, Form EIA-782A, "Refiners' /Gas Plant Operators' Monthly Petroleum Product Sales Report."

Table 6. U.S. Refiner Motor Gasoline Prices by Grade and Sales Type
(Cents per Gallon Excluding Taxes)

Year Month	Regular						Midgrade					
	Sales to End Users		Sales for Resale				Sales to End Users		Sales for Resale			
	Through Retail Outlets	Average ^a	DTW	Rack	Bulk	Average	Through Retail Outlets	Average ^a	DTW	Rack	Bulk	Average
1983	98.0	97.0	-	-	-	89.5	-	-	-	-	-	-
1984	92.2	91.4	-	-	-	84.2	-	-	-	-	-	-
1985	92.5	91.7	-	-	-	84.3	-	-	-	-	-	-
1986	62.4	61.6	-	-	-	52.2	-	-	-	-	-	-
1987	65.9	65.0	-	-	-	56.9	-	-	-	-	-	-
1988	64.9	64.1	-	-	-	54.8	-	-	-	-	-	-
1989	72.0	71.4	-	-	-	61.8	79.6	79.3	-	-	-	68.6
1990	85.3	84.9	-	-	-	75.8	92.3	92.1	-	-	-	81.4
1991	76.4	76.1	-	-	-	67.2	84.7	84.3	-	-	-	73.3
1992	74.6	74.3	-	-	-	64.5	83.1	82.7	-	-	-	70.8
1993	71.6	71.2	-	-	-	59.3	81.0	80.5	-	-	-	66.0
1994	69.5	68.9	64.6	54.7	50.2	56.6	79.1	78.5	70.4	58.4	NA	63.8
1995	72.3	71.7	68.2	57.6	53.4	59.3	81.3	80.8	73.7	61.9	NA	67.0
1996	81.2	80.7	77.0	67.2	62.2	68.5	90.1	89.6	82.4	70.9	NA	75.9
1997	80.3	79.8	76.4	65.6	61.5	67.3	89.8	89.5	82.2	69.4	71.1	74.9
1998	63.4	63.0	59.6	48.1	44.9	49.9	73.1	72.8	65.5	52.1	NA	57.6
1999	74.7	74.2	73.0	60.5	54.2	62.0	83.8	83.5	78.4	63.9	NA	69.6
2000	107.7	107.3	104.2	92.7	87.3	94.2	117.1	116.8	109.9	96.0	-	101.3
2001	100.0	99.7	97.7	84.8	78.6	86.5	110.3	110.0	104.2	88.8	-	94.5
2002	91.5	91.2	88.6	80.1	73.5	80.6	101.3	101.0	96.8	83.9	-	88.5
2003	112.7	112.3	113.4	96.5	88.8	98.1	122.2	121.8	119.6	100.4	-	106.1
2004	140.7	140.4	141.4	125.7	118.2	126.9	150.3	149.9	146.9	129.6	-	134.0
2005												
January	136.6	136.3	131.0	127.2	120.3	126.5	146.9	146.6	138.7	131.3	-	133.0
February	143.9	143.7	140.9	132.3	126.1	132.5	154.1	153.8	147.8	136.4	-	139.0
March	161.2	160.9	158.0	152.2	141.1	151.3	171.4	171.0	164.8	155.4	-	157.4
April	177.7	177.3	178.6	161.9	153.3	162.7	188.8	188.4	184.7	163.2	-	167.7
May	168.2	167.9	171.7	150.3	145.3	152.3	180.4	180.1	178.3	151.3	-	156.6
June	169.4	169.1	167.7	159.7	150.3	159.0	179.6	179.3	174.8	161.7	-	164.1
July	182.2	181.9	182.3	168.8	161.5	169.5	193.1	192.8	189.3	171.1	-	174.4
August	205.8	205.3	201.3	195.1	181.5	193.7	215.9	215.4	208.9	199.7	-	201.3
September	239.7	239.0	230.6	218.3	210.8	218.9	250.2	249.8	237.9	221.5	-	224.5
October	223.7	223.2	215.3	192.0	192.2	195.2	235.1	234.8	223.6	195.6	-	200.7
November	179.3	179.0	178.3	156.1	151.6	158.2	191.9	191.5	186.5	160.3	-	164.9
December	171.3	171.1	161.7	160.0	154.5	159.3	181.1	180.8	170.0	163.7	-	164.8
2005	180.5	180.2	176.5	165.3	156.8	165.4	189.6	189.3	182.1	168.1	-	170.8
2006												
January	184.7	184.5	176.3	173.9	167.2	173.3	194.5	194.3	184.6	176.1	-	177.6
February	180.5	180.2	177.9	162.6	159.9	164.2	191.7	191.4	186.2	168.1	-	171.2
March	195.8	195.5	188.4	186.5	175.5	185.2	206.4	206.1	197.3	192.5	-	193.3
April	230.8	230.5	223.9	220.2	201.9	217.8	241.0	240.7	232.2	223.9	-	225.3
May	243.1	242.6	250.4	222.8	209.9	224.2	255.9	255.6	257.5	226.2	-	231.2
June	240.9	240.5	243.9	225.9	210.4	225.6	253.5	253.2	252.0	232.2	-	235.6
July	250.1	249.8	248.1	238.3	223.6	237.4	262.0	261.8	256.4	244.7	-	246.9
August	246.0	245.5	242.6	222.0	217.8	223.8	258.8	258.6	252.0	231.0	-	234.3
September	204.1	203.6	208.3	173.9	172.3	177.7	220.5	220.2	219.2	178.5	-	185.1
October	175.6	175.5	175.7	161.1	154.5	162.0	189.3	189.1	185.0	165.9	-	169.0
November	175.8	175.7	172.8	164.6	156.6	164.7	187.4	187.3	180.8	170.0	-	171.9
December	183.6	183.5	183.3	170.2	163.2	170.8	196.1	196.0	191.7	174.3	-	177.5
2006	210.2	209.9	208.2	194.4	186.6	195.0	221.6	221.3	215.7	198.7	-	201.6
2007												
January	175.7	175.5	179.4	151.8	148.7	154.9	190.0	189.8	186.2	155.1	-	160.6
February	181.1	180.9	183.0	169.6	157.2	169.5	194.1	194.0	190.5	175.0	-	177.6
March	210.6	210.3	217.7	196.4	183.0	197.1	224.6	224.4	225.1	200.8	-	204.9
April	237.5	237.2	241.3	224.3	208.3	223.9	251.5	251.2	249.8	228.1	-	231.6
May	264.6	264.1	259.8	250.1	228.0	247.1	276.9	276.7	268.8	259.8	-	261.1
June	254.1	253.7	247.4	234.2	222.4	233.7	268.1	267.9	256.8	241.3	-	243.5
July	246.0	245.7	236.6	228.8	219.1	228.1	258.9	258.8	246.1	238.8	-	239.9
August	229.2	228.9	217.1	213.7	205.1	212.6	241.4	241.3	226.6	225.4	-	225.5
September	231.0	230.8	218.6	220.1	206.2	217.3	242.5	242.4	228.0	226.7	-	226.9
October	231.9	231.7	227.2	220.5	211.0	219.7	245.2	245.0	236.3	223.0	-	224.8
November	258.7	258.4	252.9	244.6	234.1	243.8	271.3	271.1	261.2	247.4	-	249.3
December	252.2	251.9	247.8	233.2	227.8	233.9	265.5	265.3	255.9	235.0	-	237.9
2007	231.8	231.5	227.8	216.1	207.4	216.1	244.0	243.8	235.1	222.6	-	224.5

See footnotes at end of table.

Table 6. U.S. Refiner Motor Gasoline Prices by Grade and Sales Type

(Cents per Gallon Excluding Taxes) — Continued

Year Month	Premium						All Grades					
	Sales to End Users		Sales for Resale				Sales to End Users		Sales for Resale			
	Through Retail Outlets	Average ^a	DTW	Rack	Bulk	Average	Through Retail Outlets	Average ^a	DTW	Rack	Bulk	Average
1983	108.0	105.7	-	-	-	96.4	96.4	95.4	-	-	-	88.2
1984	102.1	101.5	-	-	-	91.6	91.4	90.7	-	-	-	83.2
1985	103.0	102.3	-	-	-	92.2	92.1	91.2	-	-	-	83.5
1986	74.8	73.7	-	-	-	61.0	63.2	62.4	-	-	-	53.1
1987	79.0	78.4	-	-	-	67.1	67.8	66.9	-	-	-	58.9
1988	79.4	78.8	-	-	-	67.2	68.1	67.3	-	-	-	57.7
1989	87.4	86.8	-	-	-	74.9	76.3	75.6	-	-	-	65.4
1990	99.0	98.5	-	-	-	87.4	88.8	88.3	-	-	-	78.6
1991	91.2	90.7	-	-	-	79.2	80.0	79.7	-	-	-	69.9
1992	92.0	91.4	-	-	-	77.4	79.2	78.7	-	-	-	67.7
1993	89.6	88.9	-	-	-	72.2	76.5	75.9	-	-	-	62.6
1994	87.3	86.5	78.7	64.0	55.6	69.5	74.4	73.8	69.3	56.7	50.9	59.9
1995	89.7	89.0	82.2	67.3	58.3	72.2	77.1	76.5	72.9	59.8	54.0	62.6
1996	97.9	97.2	89.7	76.2	66.9	80.3	85.3	84.7	80.9	69.0	62.7	71.3
1997	97.9	97.3	89.5	74.9	65.8	79.2	84.4	83.9	80.3	67.4	62.0	70.0
1998	81.1	80.5	72.6	57.3	48.9	61.7	67.8	67.3	63.6	50.0	45.4	52.6
1999	91.2	90.6	85.1	68.7	58.5	72.6	78.5	78.1	76.5	62.1	54.9	64.5
2000	125.0	124.2	117.4	101.7	92.7	105.5	111.1	110.6	107.4	94.0	87.9	96.3
2001	118.1	117.5	111.2	93.6	83.0	98.0	103.5	103.2	100.9	86.2	79.1	88.6
2002	109.4	108.8	103.0	89.9	80.0	92.8	94.9	94.7	92.2	81.6	74.1	82.8
2003	131.2	130.5	126.9	106.4	95.5	111.3	116.0	115.6	116.4	97.8	89.3	100.2
2004	160.3	159.6	155.3	136.1	127.4	140.8	143.9	143.5	144.2	127.0	118.7	128.8
2005												
January	156.8	156.2	146.2	137.4	126.2	138.5	139.8	139.5	134.2	128.5	120.7	128.2
February	163.9	163.4	155.5	142.6	131.6	144.9	147.0	146.8	143.9	133.6	126.5	134.2
March	180.0	179.3	172.0	163.3	154.6	164.9	164.0	163.7	160.8	153.4	141.9	153.0
April	198.7	197.9	192.8	174.0	164.9	177.8	180.7	180.3	181.3	163.1	154.0	164.4
May	191.8	191.1	186.7	162.0	155.4	167.5	171.7	171.4	174.7	151.5	145.8	154.1
June	190.4	189.7	182.8	171.5	161.0	173.4	172.4	172.1	170.7	161.0	150.8	160.7
July	204.2	203.5	198.0	182.5	176.7	185.7	185.3	185.0	185.3	170.3	162.5	171.4
August	225.9	224.9	217.0	207.5	198.9	209.0	208.6	208.0	204.3	196.5	182.5	195.5
September	260.3	259.0	246.2	231.8	225.4	234.5	242.4	241.7	233.4	219.7	211.9	220.6
October	246.3	245.5	231.0	206.0	200.6	211.2	226.2	226.2	218.2	193.4	193.0	197.0
November	204.5	203.6	194.3	169.0	161.5	174.8	182.8	182.4	181.5	157.5	152.0	160.1
December	192.8	192.2	177.0	171.9	167.2	172.8	174.1	173.9	164.8	161.3	155.2	160.8
2005	200.0	199.2	190.1	176.0	169.6	178.9	183.3	182.9	179.1	166.4	157.6	167.0
2006												
January	205.6	205.0	191.9	187.0	182.2	187.9	187.5	187.2	179.3	175.2	168.2	174.9
February	203.4	202.7	194.1	175.1	168.8	179.4	183.7	183.3	181.1	164.0	160.3	166.0
March	215.7	215.1	204.0	199.4	193.5	199.9	198.6	198.3	191.5	187.9	176.8	187.1
April	251.4	250.7	238.9	234.3	228.6	235.0	233.5	233.1	226.6	221.6	203.0	219.7
May	268.8	267.6	265.8	238.1	229.3	243.5	246.3	245.8	253.1	224.3	211.0	226.3
June	265.9	264.8	259.8	242.4	236.0	246.0	244.1	243.6	246.8	227.7	211.4	227.9
July	274.1	273.3	264.1	254.7	244.1	256.1	253.1	252.8	250.9	240.0	224.7	239.5
August	270.5	269.7	259.0	239.7	237.8	244.0	249.1	248.6	245.7	224.0	218.5	226.0
September	233.1	232.3	225.1	191.5	180.4	198.1	208.1	207.6	211.7	175.8	172.8	180.0
October	201.0	200.6	192.9	177.1	164.4	179.6	179.1	178.9	179.1	162.8	155.2	164.1
November	199.3	198.9	189.4	180.7	174.9	182.3	179.0	178.8	176.0	166.3	157.8	166.7
December	208.4	208.0	199.8	186.5	175.5	188.7	187.0	186.8	186.4	171.8	164.0	172.8
2006	232.6	232.0	223.1	209.3	198.8	211.7	213.1	212.8	211.0	195.9	187.3	196.9
2007												
January	202.4	202.0	197.0	168.6	155.3	174.1	179.4	179.1	182.7	153.5	149.2	157.0
February	205.7	205.4	201.1	185.6	167.5	188.1	184.4	184.2	186.4	171.3	157.8	171.7
March	236.7	236.2	236.1	214.8	205.0	219.2	214.1	213.8	221.0	198.2	184.0	199.5
April	263.4	262.9	260.3	245.2	232.9	247.2	240.8	240.5	244.7	226.3	210.1	226.4
May	287.8	287.1	278.4	267.2	245.6	268.1	267.4	266.9	263.1	252.0	228.7	249.5
June	279.5	278.8	266.8	254.0	237.6	255.1	257.4	256.9	251.0	236.3	223.3	236.1
July	270.2	269.6	256.0	249.2	239.1	250.1	249.1	248.8	240.2	231.2	219.9	230.7
August	253.1	252.5	236.0	233.3	223.3	233.4	232.3	232.0	220.7	216.2	205.6	215.2
September	253.7	253.2	237.4	238.5	225.9	237.3	234.0	233.7	222.1	222.2	207.0	219.5
October	256.8	256.3	246.4	239.3	228.9	240.4	235.2	235.0	230.7	222.3	211.6	221.8
November	283.3	282.7	272.1	262.5	246.8	263.5	261.7	261.4	256.3	246.2	234.7	245.8
December	278.7	278.1	267.4	250.6	237.8	253.5	255.5	255.2	251.3	234.7	228.3	235.8
2007	255.8	255.2	246.0	233.9	220.9	235.7	234.9	234.5	231.1	218.0	208.0	218.2

Dash (-) = No data reported.

NA = Not available.

^a Includes sales through retail outlets as well as all direct sales to end users that were not made through company-operated retail outlets, e.g., sales to agricultural customers, commercial sales, and industrial sales.

Notes: Data for the 4th quarter of 1993 were derived from two separate survey systems. The DTW, Rack, and Bulk components were derived from the revised EIA-782 survey system, while the End-Use and Average Resale categories were derived from the predecessor EIA-782 survey system. Therefore, the DTW, Rack, and Bulk components are not consistent with the Average Resale category. Beginning January 1994, all data are from the revised EIA-782 survey system and are consistent.

Note: Motor gasoline averages and totals prior to October 1993 include leaded gasoline.

Source: Energy Information Administration Form EIA-782A, "Refiners/Gas Plant Operators' Monthly Petroleum Product Sales Report."

Table 7. U.S. Refiner Motor Gasoline Volumes by Grade and Sales Type
(Million Gallons per Day)

Year Month	Regular						Midgrade					
	Sales to End Users		Sales for Resale				Sales to End Users		Sales for Resale			
	Through Retail Outlets	Total ^a	DTW	Rack	Bulk	Total	Through Retail Outlets	Total ^a	DTW	Rack	Bulk	Total
1983	20.0	23.5	-	-	-	98.3	-	-	-	-	-	-
1984	24.3	27.8	-	-	-	106.8	-	-	-	-	-	-
1985	26.2	29.9	-	-	-	119.7	-	-	-	-	-	-
1986	30.9	34.7	-	-	-	127.0	-	-	-	-	-	-
1987	32.7	36.1	-	-	-	141.9	-	-	-	-	-	-
1988	34.2	37.3	-	-	-	153.6	-	-	-	-	-	-
1989	34.3	36.8	-	-	-	155.7	4.9	5.1	-	-	-	16.4
1990	36.7	38.8	-	-	-	174.5	7.4	7.6	-	-	-	23.1
1991	38.4	40.4	-	-	-	180.9	7.9	8.2	-	-	-	23.7
1992	36.5	38.4	-	-	-	182.2	8.9	9.2	-	-	-	27.5
1993	35.6	37.2	-	-	-	184.0	8.7	8.9	-	-	-	27.7
1994	34.3	35.9	47.7	120.3	24.3	192.3	8.5	8.7	12.8	15.7	0.2	28.7
1995	34.3	35.9	43.8	126.2	31.8	201.8	9.6	9.8	13.3	17.2	0.1	30.6
1996	37.2	38.9	46.5	131.9	35.2	213.6	9.5	9.8	12.9	16.6	NA	29.5
1997	40.5	42.4	46.2	135.7	33.9	215.8	9.7	10.0	12.1	16.3	NA	28.4
1998	41.7	43.2	44.4	138.9	37.1	220.3	10.1	10.3	11.1	16.3	NA	27.4
1999	41.6	43.0	45.6	147.5	34.5	227.6	9.9	10.1	10.5	16.1	NA	26.6
2000	43.6	45.0	47.5	159.3	32.4	239.3	8.6	8.7	8.8	14.2	-	23.0
2001	45.0	46.3	47.2	163.2	33.0	243.5	8.3	8.4	7.8	13.3	-	21.1
2002	46.2	47.4	46.9	163.0	39.2	249.2	8.3	8.5	7.4	13.4	-	20.8
2003	47.3	48.6	43.5	171.4	40.1	255.0	7.8	7.9	5.5	13.1	-	18.6
2004	44.5	45.8	41.1	182.1	42.2	265.4	6.4	6.5	4.4	12.7	-	17.0
2005												
January	42.0	43.1	36.4	171.6	43.3	251.3	6.1	6.2	3.6	12.1	-	15.7
February	44.8	46.0	38.5	179.4	46.2	264.2	6.4	6.5	3.7	12.9	-	16.6
March	45.3	46.6	39.2	185.7	41.1	266.0	6.1	6.2	3.6	13.2	-	16.8
April	46.4	47.7	38.8	188.8	49.4	277.0	6.0	6.1	3.4	12.9	-	16.3
May	46.5	47.7	37.6	192.0	49.3	278.9	6.1	6.2	3.4	13.9	-	17.3
June	48.3	49.6	38.8	197.7	55.1	291.6	6.3	6.4	3.4	14.8	-	18.2
July	48.1	49.2	38.1	196.5	43.7	278.2	6.2	6.3	3.3	14.7	-	18.0
August	48.6	49.9	38.7	204.3	47.6	290.6	6.0	6.1	3.2	14.9	-	18.1
September	46.3	47.5	37.3	188.1	41.5	266.9	5.5	5.6	2.9	12.9	-	15.9
October	45.7	46.8	36.1	189.5	39.4	264.9	5.3	5.4	2.8	12.7	-	15.5
November	47.0	48.1	34.8	190.8	45.1	270.7	5.6	5.7	2.8	13.0	-	15.7
December	47.2	48.3	36.1	192.8	48.5	277.4	5.8	5.8	2.9	13.6	-	16.4
2005	46.4	47.5	37.5	189.8	45.8	273.2	5.9	6.0	3.2	13.5	-	16.7
2006												
January	45.0	46.2	34.5	178.0	33.3	245.8	5.4	5.5	2.6	12.2	-	14.8
February	47.6	48.8	34.8	189.4	41.9	266.1	5.8	5.9	2.7	12.8	-	15.5
March	47.6	48.8	35.4	191.8	36.1	263.4	5.7	5.8	2.6	12.3	-	15.0
April	49.1	50.4	35.8	195.8	44.0	275.6	5.6	5.7	2.6	12.9	-	15.5
May	48.7	50.0	35.0	200.0	43.5	278.5	5.4	5.4	2.4	12.4	-	14.7
June	50.0	51.3	36.2	205.0	47.8	289.0	5.5	5.6	2.4	11.3	-	13.7
July	49.8	51.0	35.9	201.9	39.8	277.6	5.4	5.5	2.3	10.0	-	12.3
August	50.3	51.5	34.8	206.5	49.0	290.3	5.4	5.5	2.3	12.2	-	14.5
September	48.0	49.1	32.4	196.9	44.1	273.4	5.4	5.4	2.2	11.1	-	13.2
October	48.3	49.4	33.5	195.0	36.2	264.7	5.4	5.5	2.2	11.3	-	13.6
November	47.0	48.2	34.6	196.0	33.9	264.6	5.3	5.4	2.3	11.2	-	13.5
December	46.6	47.5	34.9	195.9	40.6	271.4	5.3	5.4	2.4	10.9	-	13.4
2006	48.2	49.4	34.8	196.0	40.8	271.7	5.5	5.5	2.4	11.7	-	14.1
2007												
January	44.1	44.9	32.8	187.1	35.5	255.4	5.0	5.0	2.2	10.3	-	12.5
February	45.8	46.8	34.4	193.8	38.1	266.3	5.2	5.2	2.3	11.5	-	13.8
March	46.3	47.3	35.2	198.1	40.1	273.4	5.1	5.1	2.2	10.9	-	13.1
April	46.8	47.7	34.7	196.5	43.6	274.9	5.0	5.0	2.1	11.4	-	13.5
May	48.2	49.2	34.8	198.6	54.0	287.4	4.9	4.9	2.1	11.4	-	13.5
June	49.9	50.8	33.8	199.5	50.5	283.8	5.0	5.1	2.0	12.0	-	14.0
July	48.1	48.9	33.2	197.4	46.9	277.5	4.9	5.0	2.0	12.2	-	14.1
August	48.9	49.8	33.6	202.4	48.9	284.9	5.1	5.1	2.0	12.5	-	14.5
September	47.0	47.9	32.9	191.2	53.5	277.6	5.0	5.0	2.0	11.6	-	13.6
October	47.2	47.9	34.7	196.8	48.1	279.5	5.0	5.0	2.0	12.3	-	14.3
November	46.6	47.3	34.4	194.7	48.0	277.0	4.7	4.7	1.9	12.1	-	14.0
December	44.8	45.5	34.0	192.1	54.2	280.2	4.7	4.7	1.9	11.9	-	13.8
2007	47.0	47.8	34.0	195.7	46.8	276.6	5.0	5.0	2.0	11.7	-	13.7

See footnotes at end of table.

Table 7. U.S. Refiner Motor Gasoline Volumes by Grade and Sales Type

(Million Gallons per Day) — Continued

Year Month	Premium						All Grades					
	Sales to End Users		Sales for Resale				Sales to End Users		Sales for Resale			
	Through Retail Outlets	Total ^a	DTW	Rack	Bulk	Total	Through Retail Outlets	Total ^a	DTW	Rack	Bulk	Total
1983	5.0	6.2	-	-	-	28.7	42.3	51.1	-	-	-	242.5
1984	8.5	9.2	-	-	-	33.7	50.3	57.6	-	-	-	246.3
1985	9.2	10.0	-	-	-	38.0	50.5	57.5	-	-	-	256.9
1986	9.0	9.8	-	-	-	45.1	54.2	61.2	-	-	-	257.2
1987	11.2	11.6	-	-	-	53.0	55.7	61.0	-	-	-	263.7
1988	13.8	14.5	-	-	-	62.4	56.7	61.0	-	-	-	260.7
1989	13.5	14.2	-	-	-	60.8	57.5	61.2	-	-	-	264.8
1990	11.2	11.7	-	-	-	53.7	57.4	60.3	-	-	-	261.3
1991	10.5	10.9	-	-	-	48.3	58.4	61.2	-	-	-	265.4
1992	10.3	10.7	-	-	-	51.7	56.4	59.0	-	-	-	266.9
1993	10.3	10.6	-	-	-	52.8	54.9	57.2	-	-	-	276.7
1994	10.0	10.3	22.6	29.9	3.2	55.7	52.8	55.0	83.1	165.9	27.7	288.8
1995	9.8	10.2	20.8	31.5	4.2	56.4	53.7	55.9	77.9	174.8	36.0	293.6
1996	8.4	8.8	18.2	28.3	4.1	50.5	55.1	57.5	77.5	176.8	39.3	292.7
1997	8.4	8.8	16.9	27.6	4.0	48.5	58.7	61.1	75.1	179.6	38.0	300.4
1998	9.6	9.9	17.4	30.9	4.3	52.7	61.4	63.3	73.0	186.1	41.4	306.9
1999	8.7	8.9	16.1	31.0	5.7	52.7	60.2	62.0	72.2	194.6	40.2	304.4
2000	6.9	7.1	13.0	24.4	4.7	42.1	59.1	60.9	69.4	197.9	37.1	305.2
2001	7.1	7.3	12.3	24.6	3.7	40.6	60.4	62.0	67.4	201.1	36.7	311.8
2002	7.5	7.8	12.5	25.2	4.1	41.8	62.1	63.6	66.9	201.7	43.3	311.6
2003	7.1	7.3	10.8	23.9	3.3	38.1	62.2	63.8	59.8	208.4	43.4	316.4
2004	5.9	6.1	9.4	22.3	2.3	34.0	56.9	58.4	54.8	217.1	44.5	299.9
2005												
January	5.4	5.6	8.5	21.1	3.4	33.0	53.6	54.9	48.4	204.8	46.7	314.8
February	5.7	5.9	8.8	22.0	3.2	34.0	56.9	58.4	51.0	214.3	49.5	315.0
March	5.4	5.5	8.5	21.1	2.6	32.2	56.8	58.3	51.3	220.0	43.7	324.9
April	5.2	5.3	8.0	20.0	3.5	31.5	57.1	59.1	50.3	221.7	52.9	329.8
May	5.4	5.6	8.3	22.4	3.0	33.6	58.1	59.5	49.3	228.2	52.3	344.1
June	5.6	5.8	8.6	22.7	3.0	34.3	60.2	61.7	50.8	235.2	58.1	329.4
July	5.5	5.6	8.1	22.1	3.0	33.2	59.8	61.1	49.4	233.3	46.7	341.0
August	5.1	5.3	7.8	21.5	3.0	32.3	59.6	61.2	49.7	240.7	50.6	312.0
September	4.6	4.8	7.0	19.0	3.3	29.3	56.4	57.9	47.2	220.0	44.8	310.0
October	4.7	4.9	7.0	18.8	3.8	29.6	55.8	57.1	45.9	220.9	43.2	316.3
November	5.1	5.3	7.5	20.2	2.2	29.9	57.7	59.1	45.1	224.0	47.2	324.1
December	5.1	5.3	7.7	20.1	2.5	30.3	58.1	59.4	46.6	226.5	51.0	321.8
2005	5.2	5.4	8.0	20.9	3.0	31.9	57.5	59.0	48.7	224.2	48.9	288.1
2006												
January	4.7	4.9	7.1	18.1	2.4	27.5	55.1	56.5	44.2	208.3	35.7	311.0
February	5.1	5.3	7.3	20.0	2.0	29.4	58.5	60.0	44.8	222.2	43.9	308.7
March	5.1	5.2	7.4	20.1	2.9	30.4	58.4	59.9	45.5	224.3	39.0	319.1
April	4.8	5.0	6.9	19.2	2.0	28.1	59.5	61.0	45.3	227.9	46.0	322.9
May	4.6	4.8	6.6	20.5	2.6	29.7	58.7	60.2	44.0	232.9	46.1	332.6
June	4.9	5.1	7.0	21.0	2.0	29.9	60.4	62.0	45.5	237.3	49.8	319.1
July	4.8	4.9	6.9	20.2	2.2	29.2	60.0	61.4	45.1	232.1	42.0	334.7
August	4.8	5.0	6.9	21.1	1.9	29.9	60.6	62.0	44.0	239.8	50.9	317.4
September	5.1	5.2	7.0	21.0	2.9	30.8	58.4	59.8	41.5	228.9	47.0	309.1
October	5.2	5.3	7.2	20.7	2.9	30.9	58.9	60.2	43.0	227.1	39.1	308.5
November	5.1	5.2	7.3	20.7	2.4	30.4	57.5	58.9	44.2	228.0	36.3	315.4
December	4.9	5.0	7.3	20.5	2.7	30.6	56.9	57.9	44.7	227.4	43.3	297.6
2006	4.9	5.1	7.1	20.3	2.4	29.7	58.6	60.0	44.3	228.0	43.2	297.6
2007												
January	4.7	4.8	7.0	19.9	2.8	29.7	53.7	54.7	42.0	217.3	38.3	310.3
February	4.8	4.9	7.3	20.7	2.2	30.2	55.9	57.0	44.1	225.9	40.3	316.4
March	4.7	4.9	7.0	20.9	2.0	29.9	56.1	57.3	44.4	229.9	42.1	318.5
April	4.6	4.7	6.8	19.8	3.5	30.1	56.4	57.4	43.7	227.7	47.1	330.2
May	4.5	4.6	6.8	20.1	2.3	29.3	57.6	58.7	43.7	230.1	56.3	328.1
June	4.9	5.0	6.8	20.3	3.3	30.4	59.8	60.9	42.6	231.7	53.8	321.3
July	4.8	4.9	6.8	20.9	2.0	29.6	57.8	58.8	41.9	230.4	48.9	330.2
August	5.1	5.2	7.1	22.2	1.5	30.8	59.1	60.2	42.7	237.1	50.5	320.8
September	4.9	5.0	7.0	20.4	2.2	29.6	56.9	57.9	41.9	223.2	55.8	323.4
October	4.8	4.9	7.1	20.6	1.9	29.6	57.0	57.8	43.8	229.7	49.9	318.4
November	4.4	4.5	6.7	18.5	2.3	27.4	55.7	56.6	42.9	225.2	50.3	321.6
December	4.4	4.4	6.7	18.3	2.6	27.6	53.9	54.7	42.5	222.3	56.8	297.6
2007	4.7	4.8	6.9	20.2	2.4	29.5	56.7	57.7	43.0	227.6	49.2	319.8

Dash (-) = No data reported.

NA = Not available.

^a Includes sales through retail outlets as well as all direct sales to end users that were not made through company-operated retail outlets, e.g., sales to agricultural customers, commercial sales, and industrial sales.

Notes: Data for the 4th quarter of 1993 were derived from two separate survey systems. The DTW, Rack, and Bulk components were derived from the revised EIA-782 survey system, while the End-Use and Average Resale categories were derived from the predecessor EIA-782 survey system. Therefore, the DTW, Rack, and Bulk components are not consistent with the Average Resale category. Beginning January 1994, all data are from the revised EIA-782 survey system and are consistent.

Note: Motor gasoline averages and totals prior to October 1993 include leaded gasoline.

Note: Totals may not equal the sum of the components due to rounding.

Source: Energy Information Administration Form EIA-782A, "Refiners/Gas Plant Operators' Monthly Petroleum Product Sales Report."

Table 8. U.S. Refiner Conventional Motor Gasoline Prices by Grade and Sales Type
(Cents per Gallon Excluding Taxes)

Year Month	Regular						Midgrade					
	Sales to End Users		Sales for Resale				Sales to End Users		Sales for Resale			
	Through Retail Outlets	Average ^a	DTW	Rack	Bulk	Average	Through Retail Outlets	Average ^a	DTW	Rack	Bulk	Average
1994	68.7	68.1	63.6	54.5	50.0	55.8	78.4	77.8	69.4	NA	NA	62.7
1995	71.0	70.4	65.1	57.0	52.5	57.3	80.0	79.4	71.1	61.0	NA	63.7
1996	79.7	79.1	74.3	66.5	60.7	66.4	88.4	87.8	80.1	70.0	NA	72.6
1997	78.1	77.5	71.9	64.9	60.0	64.8	87.4	86.9	78.3	68.5	W	70.8
1998	61.1	60.6	55.1	47.3	43.9	47.3	70.4	70.0	61.3	51.1	W	53.3
1999	71.0	70.6	67.6	59.5	52.0	59.0	80.2	79.9	73.4	62.8	-	65.0
2000	104.5	104.0	99.4	91.3	84.4	90.9	113.6	113.3	105.2	94.5	-	96.4
2001	96.1	95.8	91.4	83.5	76.1	83.0	105.8	105.5	98.4	87.2	-	88.9
2002	89.3	89.1	83.6	79.1	72.3	78.2	98.5	98.1	90.6	82.9	-	83.9
2003	108.1	107.8	104.0	95.2	87.1	94.2	117.3	116.8	110.8	99.4	-	100.6
2004	136.8	136.4	132.5	124.4	117.0	123.4	145.4	145.0	139.1	128.7	-	129.6
2005												
January	135.1	134.8	127.1	126.7	119.9	125.3	144.6	144.2	137.1	131.0	-	131.5
February	141.2	141.0	134.7	131.4	125.9	130.4	150.6	150.3	143.5	135.7	-	136.2
March	158.9	158.6	151.7	151.8	140.8	149.8	168.4	168.0	W	154.7	-	155.1
April	174.1	173.7	171.9	161.3	152.3	159.9	184.2	183.7	W	162.3	-	163.5
May	163.4	163.1	W	149.3	143.9	149.0	174.2	173.8	W	150.3	-	151.9
June	166.3	166.0	W	158.5	148.7	156.7	175.3	175.0	W	160.8	-	161.4
July	177.6	177.3	W	166.7	158.9	165.6	187.0	186.6	W	169.6	-	170.3
August	202.4	201.8	W	193.3	178.9	190.7	211.0	210.5	W	198.6	-	198.8
September	237.3	236.4	225.1	216.8	208.4	215.7	246.8	246.3	234.2	220.3	-	221.1
October	221.9	221.4	209.1	192.1	192.9	193.0	233.0	232.7	223.8	195.5	-	196.8
November	175.6	175.3	172.3	155.1	151.8	155.1	187.1	186.7	187.0	159.4	-	160.7
December	171.0	170.7	161.3	159.4	154.2	158.4	179.9	179.6	171.6	163.2	-	163.6
2005	178.0	177.6	170.9	164.3	155.5	162.9	186.1	185.7	178.1	167.5	-	168.2
2006												
January	183.7	183.4	172.6	173.1	166.2	171.9	192.3	192.0	182.4	175.5	-	175.8
February	177.3	177.0	169.3	161.9	160.5	161.9	187.5	187.2	180.0	167.6	-	168.1
March	194.4	194.1	183.3	185.8	174.8	183.8	204.0	203.6	W	192.0	-	192.1
April	228.4	228.0	218.1	218.5	200.1	214.7	237.5	237.1	W	222.7	-	223.0
May	234.6	234.1	238.6	217.8	208.2	216.6	245.4	245.1	248.2	223.1	-	224.3
June	233.0	232.5	233.1	221.2	209.4	219.1	243.8	243.5	243.0	229.1	-	229.9
July	243.8	243.5	235.4	234.6	222.6	232.3	253.9	253.6	244.5	241.7	-	241.9
August	241.5	241.0	234.5	219.9	217.6	220.0	253.8	253.4	244.3	229.5	-	230.2
September	198.7	198.3	204.0	172.2	172.3	173.5	214.4	214.1	W	176.8	-	178.8
October	172.9	172.9	175.5	160.2	W	159.6	185.8	185.7	187.7	W	-	165.8
November	173.8	173.7	172.9	163.5	156.3	162.5	183.8	183.6	181.0	169.2	-	169.8
December	180.1	180.0	181.5	168.5	163.1	167.8	191.2	191.0	188.3	173.1	-	173.9
2006	206.2	206.0	205.4	192.5	186.4	191.8	216.6	216.4	213.4	197.2	-	198.0
2007												
January	171.3	171.0	176.1	149.5	148.8	150.3	183.3	183.1	180.8	153.3	-	154.8
February	176.8	176.7	174.9	167.4	156.6	165.7	186.7	186.5	181.6	173.6	-	174.0
March	204.5	204.2	204.8	193.3	181.7	191.5	215.2	214.9	211.1	198.8	-	199.4
April	232.3	231.9	232.2	221.9	206.4	219.3	243.7	243.4	238.1	226.2	-	226.8
May	262.0	261.4	256.5	249.3	227.2	244.4	272.3	272.0	262.7	259.7	-	259.8
June	251.5	251.0	243.8	234.0	221.7	231.6	264.3	264.0	250.8	241.0	-	241.4
July	244.5	244.1	232.7	228.5	218.1	226.5	256.4	256.2	242.8	238.9	-	239.0
August	228.4	228.1	216.8	214.3	204.8	212.3	239.7	239.5	227.6	226.0	-	226.1
September	231.9	231.6	220.9	221.4	205.6	217.6	242.4	242.3	229.0	227.1	-	227.2
October	231.0	230.8	227.4	220.9	210.6	218.9	242.7	242.5	233.4	222.6	-	223.0
November	257.7	257.4	250.2	245.0	233.5	242.6	268.9	268.6	256.0	247.0	-	247.4
December	249.8	249.5	243.1	232.6	227.5	231.7	261.1	260.9	250.0	234.3	-	235.0
2007	229.2	228.9	224.2	215.3	206.5	213.8	239.2	239.0	229.8	222.2	-	222.5

See footnotes at end of table.

Table 8. U.S. Refiner Conventional Motor Gasoline Prices by Grade and Sales Type
(Cents per Gallon Excluding Taxes) — Continued

Year Month	Premium						All Grades					
	Sales to End Users		Sales for Resale				Sales to End Users		Sales for Resale			
	Through Retail Outlets	Average ^a	DTW	Rack	Bulk	Average	Through Retail Outlets	Average ^a	DTW	Rack	Bulk	Average
1994	86.3	85.5	77.8	63.8	55.5	68.2	73.6	72.9	68.3	56.5	50.7	58.9
1995	87.7	86.8	79.0	66.5	56.8	68.4	75.3	74.6	69.3	59.0	53.0	59.8
1996	96.0	95.1	86.9	75.5	64.5	76.7	83.4	82.7	77.8	68.2	61.0	68.5
1997	95.4	94.6	85.6	74.2	64.1	75.3	81.9	81.3	75.6	66.6	60.4	66.8
1998	78.3	77.6	68.4	W	47.4	57.6	65.2	64.7	58.9	49.1	44.2	49.4
1999	87.2	86.5	80.1	67.9	55.8	68.1	74.8	74.3	71.1	61.1	52.5	60.9
2000	121.1	120.1	112.0	100.2	89.7	100.5	107.6	107.1	102.3	92.6	84.9	92.5
2001	112.9	112.3	104.2	92.2	80.6	92.3	99.2	98.9	94.3	84.8	76.5	84.5
2002	106.4	105.8	97.8	88.9	78.8	88.6	92.4	92.1	86.7	80.6	72.9	79.8
2003	125.3	124.5	117.8	105.1	92.5	105.0	110.9	110.5	106.7	96.5	87.4	95.7
2004	154.4	153.4	146.6	134.7	124.8	134.8	139.1	138.7	134.8	125.7	117.4	124.7
2005												
January	154.9	153.9	143.7	137.1	125.2	136.3	137.7	137.3	130.0	128.0	120.2	126.6
February	160.7	159.8	150.4	141.5	132.4	141.4	143.7	143.5	137.4	132.6	126.2	131.7
March	177.7	176.5	167.0	W	151.8	161.9	161.3	160.9	154.2	152.9	141.3	151.1
April	194.9	193.6	187.5	W	162.4	172.8	176.5	176.0	174.3	162.4	152.9	161.2
May	185.7	184.7	180.6	W	154.7	162.0	166.1	165.7	W	150.5	144.5	150.3
June	186.4	185.3	178.7	W	158.3	169.7	168.7	168.3	W	159.7	149.2	158.1
July	198.3	197.3	190.0	W	171.1	179.5	180.0	179.7	W	168.1	159.6	167.1
August	221.7	220.0	210.5	W	194.4	204.2	204.5	203.8	W	194.6	179.7	192.3
September	258.0	255.6	241.7	229.0	224.8	229.5	239.4	238.5	227.5	218.0	209.2	217.0
October	245.9	244.3	229.5	205.7	199.5	206.8	224.3	223.8	212.1	193.4	193.2	194.2
November	200.6	199.1	191.9	167.5	160.1	168.3	178.2	177.9	175.5	156.4	152.1	156.4
December	191.8	190.6	178.2	171.0	165.9	170.8	173.1	172.8	163.9	160.6	154.7	159.6
2005	196.6	195.4	185.7	174.7	165.2	174.6	180.1	179.7	173.2	165.4	156.0	164.1
2006												
January	204.2	203.3	189.0	185.5	181.5	185.3	185.7	185.4	175.2	174.3	167.2	173.2
February	199.1	198.1	186.6	173.9	166.8	174.1	179.7	179.3	172.1	163.2	160.8	163.1
March	214.2	213.4	199.9	W	196.8	198.4	196.6	196.2	185.9	187.2	176.0	185.4
April	249.0	247.8	234.2	W	229.6	231.6	230.4	230.0	220.5	219.8	201.0	216.3
May	257.4	255.6	255.0	231.5	230.2	233.0	236.8	236.3	241.0	219.2	209.0	218.2
June	254.9	253.2	249.6	236.4	238.7	237.5	235.2	234.7	235.5	222.8	210.4	220.9
July	264.5	263.3	251.7	249.4	248.5	249.5	245.9	245.5	237.7	236.1	223.4	234.0
August	264.5	263.3	251.4	236.8	241.8	238.2	243.9	243.3	237.1	221.9	218.2	221.8
September	226.1	224.9	223.2	W	179.4	190.6	201.7	201.4	207.2	174.0	172.6	175.0
October	197.3	196.8	W	176.2	168.9	176.5	175.6	175.5	178.5	161.8	155.2	161.3
November	195.9	195.3	191.3	179.4	174.5	179.4	176.1	175.9	175.6	165.1	157.5	164.2
December	203.1	202.6	199.4	184.6	175.0	183.9	182.5	182.4	184.2	170.1	163.8	169.3
2006	227.4	226.5	221.5	207.0	198.1	207.1	208.4	208.2	207.7	194.0	186.9	193.3
2007												
January	195.0	194.5	193.7	165.4	154.2	165.4	173.7	173.5	178.6	151.0	149.2	151.8
February	197.3	197.0	191.8	182.1	165.2	180.9	179.0	178.8	177.5	169.0	157.0	167.3
March	226.5	225.8	221.5	210.5	203.6	210.5	206.7	206.4	207.3	195.1	182.8	193.4
April	255.4	254.7	250.1	242.0	233.3	241.2	234.5	234.2	234.7	223.8	208.1	221.3
May	282.4	281.2	273.1	265.8	242.5	263.9	263.9	263.3	258.9	251.2	227.7	246.5
June	274.2	273.2	261.8	253.5	237.8	252.1	253.7	253.3	246.4	236.0	222.4	233.6
July	266.3	265.3	251.4	248.8	237.8	247.9	246.6	246.3	235.6	230.9	218.9	228.8
August	250.3	249.4	235.3	233.7	224.3	233.2	230.6	230.3	219.7	216.7	205.3	214.6
September	253.3	252.5	239.2	240.0	225.0	238.4	234.0	233.8	223.7	223.3	206.3	219.6
October	254.1	253.3	246.1	239.6	226.4	238.9	233.3	233.1	230.0	222.6	211.1	220.6
November	280.5	279.4	268.4	263.2	245.5	261.3	259.8	259.5	252.6	246.5	234.0	244.2
December	273.8	272.8	262.8	250.4	236.7	249.3	252.0	251.7	245.8	234.0	227.9	233.1
2007	250.2	249.4	241.5	232.8	218.1	231.7	231.3	230.9	226.7	217.2	207.0	215.6

Dash (-) = No data reported.

NA = Not available.

W = Withheld to avoid disclosure of individual company data.

^a Includes sales through retail outlets as well as all direct sales to end users that were not made through company-operated retail outlets, e.g., sales to agricultural customers, commercial sales, and industrial sales.

Notes: The 4th quarter of 1993 was a transitional period between the predecessor EIA-782 survey system and the revised EIA-782 survey system. The revised survey system contains additional product and sales categories, which may not be consistent with categories derived from the predecessor survey system. Beginning January 1994 all data are from the revised survey system and are consistent.

Note: Beginning January 2007, oxygenated gasoline is included in conventional gasoline.

Source: Energy Information Administration Form EIA-782A, "Refiners'/Gas Plant Operators' Monthly Petroleum Product Sales Report."

Table 9. U.S. Refiner Conventional Motor Gasoline Volumes by Grade and Sales Type
(Million Gallons per Day)

Year Month	Regular						Midgrade					
	Sales to End Users		Sales for Resale				Sales to End Users		Sales for Resale			
	Through Retail Outlets	Total ^a	DTW	Rack	Bulk	Total	Through Retail Outlets	Total ^a	DTW	Rack	Bulk	Total
1994	29.7	31.2	36.1	113.5	22.8	172.4	7.6	7.8	10.1	14.6	0.1	24.8
1995	24.0	25.3	19.4	105.1	26.0	150.5	6.0	6.3	5.1	13.6	0.1	18.7
1996	24.1	25.4	17.8	108.5	27.1	153.4	5.7	5.9	4.4	12.9	NA	17.3
1997	25.0	26.4	16.4	110.9	26.4	153.7	5.7	5.9	3.9	12.7	W	16.6
1998	25.4	26.6	13.7	112.0	28.8	154.5	6.0	6.1	3.4	12.5	W	15.8
1999	25.0	26.0	13.4	117.4	24.9	155.8	5.9	6.0	3.1	12.2	-	15.3
2000	26.0	27.1	12.8	125.7	23.9	162.4	4.9	5.0	2.3	10.8	-	13.1
2001	26.6	27.4	12.0	128.5	24.0	164.5	4.6	4.7	1.9	10.2	-	12.0
2002	27.2	28.0	11.3	127.9	31.0	170.2	4.7	4.8	1.6	10.4	-	11.9
2003	27.5	28.3	10.3	131.1	32.4	173.8	4.3	4.4	1.2	10.0	-	11.2
2004	26.5	27.3	9.7	136.7	36.1	182.5	3.5	3.6	0.9	9.8	-	10.8
2005												
January	24.0	24.7	8.4	126.0	35.8	170.2	3.1	3.1	0.8	9.4	-	10.2
February	25.8	26.6	9.0	132.1	38.4	179.5	3.3	3.3	0.8	10.1	-	10.9
March	26.7	27.6	9.5	137.5	32.5	179.6	3.3	3.3	W	10.5	-	11.3
April	27.8	28.7	10.1	140.1	41.1	191.2	3.2	3.3	W	10.3	-	11.1
May	28.1	28.9	W	141.7	37.7	189.1	3.3	3.3	W	11.2	-	11.9
June	28.7	29.7	W	147.1	40.5	197.4	3.3	3.4	W	11.9	-	12.6
July	28.9	29.7	W	146.6	35.4	191.6	3.3	3.4	W	11.9	-	12.6
August	29.1	30.1	W	152.1	36.2	198.4	3.2	3.3	W	12.0	-	12.8
September	27.5	28.4	8.8	139.3	33.1	181.3	2.9	2.9	0.6	10.4	-	11.0
October	27.8	28.6	7.8	139.2	30.3	177.4	2.8	2.9	0.5	10.2	-	10.8
November	27.6	28.4	7.4	138.3	36.6	182.3	2.8	2.9	0.5	10.4	-	10.9
December	26.9	27.7	7.4	140.9	39.0	187.3	2.8	2.9	0.5	10.9	-	11.5
2005	27.4	28.3	9.0	140.1	36.4	185.5	3.1	3.2	0.7	10.8	-	11.5
2006												
January	26.3	27.1	6.5	128.9	27.7	163.1	2.7	2.8	0.5	9.9	-	10.3
February	28.1	29.0	6.7	137.0	36.5	180.2	3.0	3.1	0.5	10.2	-	10.7
March	28.5	29.4	7.1	140.5	30.2	177.8	3.0	3.1	W	W	-	10.3
April	29.7	30.7	8.3	144.1	39.3	191.7	3.0	3.0	W	W	-	11.0
May	29.4	30.4	8.2	147.3	41.1	196.5	2.9	2.9	0.5	9.8	-	10.3
June	29.8	30.8	8.6	152.0	45.5	206.1	2.9	3.0	0.5	8.8	-	9.3
July	30.0	30.9	8.6	150.9	37.5	197.0	2.8	2.9	0.5	7.6	-	8.1
August	30.9	31.9	8.2	152.1	46.4	206.7	2.9	3.0	0.5	9.8	-	10.3
September	29.2	30.1	7.2	143.9	40.6	191.8	2.8	2.9	W	W	-	9.2
October	29.1	29.8	6.1	W	W	181.5	2.8	2.9	W	W	-	9.2
November	28.1	28.9	6.0	143.0	31.9	180.8	2.7	2.8	0.4	8.8	-	9.2
December	27.9	28.5	5.8	142.4	38.7	186.9	2.7	2.8	0.5	8.6	-	9.0
2006	28.9	29.8	7.3	143.7	37.4	188.4	2.9	2.9	0.5	9.3	-	9.7
2007												
January	27.8	28.4	6.8	143.1	33.2	183.1	2.6	2.6	0.5	8.9	-	9.4
February	29.0	29.7	7.1	149.5	36.3	192.9	2.7	2.8	0.5	10.0	-	10.6
March	29.3	29.9	7.2	152.7	37.3	197.2	2.7	2.7	0.5	9.5	-	10.0
April	29.8	30.4	7.5	152.0	39.2	198.8	2.6	2.6	0.5	10.0	-	10.5
May	30.4	31.1	7.6	153.3	48.8	209.7	2.5	2.5	0.5	10.1	-	10.5
June	31.1	31.7	7.4	152.3	45.9	205.6	2.5	2.6	0.5	10.6	-	11.1
July	30.5	31.0	7.3	152.7	42.2	202.2	2.5	2.6	0.5	10.8	-	11.3
August	31.0	31.7	7.3	155.6	44.6	207.6	2.6	2.7	0.5	11.1	-	11.6
September	29.6	30.2	7.2	146.7	48.6	202.4	2.5	2.6	0.5	10.3	-	10.8
October	29.6	30.1	7.7	150.9	44.6	203.1	2.6	2.6	0.5	11.0	-	11.5
November	29.3	29.8	7.7	148.9	44.2	200.8	2.4	2.4	0.5	10.9	-	11.3
December	28.1	28.6	7.5	145.8	50.6	203.9	2.4	2.4	0.5	10.7	-	11.1
2007	29.6	30.2	7.4	150.3	43.0	200.7	2.6	2.6	0.5	10.3	-	10.8

See footnotes at end of table.

Table 9. U.S. Refiner Conventional Motor Gasoline Volumes by Grade and Sales Type
(Million Gallons per Day) — Continued

Year Month	Premium						All Grades					
	Sales to End Users		Sales for Resale				Sales to End Users		Sales for Resale			
	Through Retail Outlets	Total ^a	DTW	Rack	Bulk	Total	Through Retail Outlets	Total ^a	DTW	Rack	Bulk	Total
1994	8.5	8.9	16.5	28.0	2.8	47.2	45.8	47.9	62.7	156.0	25.8	244.5
1995	6.2	6.4	7.7	25.1	2.9	35.6	36.2	38.0	32.1	143.8	28.9	204.8
1996	4.9	5.1	5.8	22.5	2.5	30.8	34.7	36.5	28.1	143.8	29.6	201.5
1997	4.8	5.0	5.1	21.9	2.5	29.5	35.4	37.2	25.4	145.6	28.9	199.8
1998	5.5	5.7	4.7	W	2.7	31.9	36.9	38.5	21.8	148.9	31.5	202.2
1999	5.0	5.2	4.3	24.1	3.8	32.2	35.9	37.2	20.8	153.7	28.7	203.3
2000	3.7	3.9	3.1	18.6	2.8	24.5	34.7	35.9	18.2	155.1	26.7	200.0
2001	3.7	3.8	2.8	18.7	2.7	24.1	35.0	36.0	16.7	157.4	26.7	200.7
2002	3.8	4.0	2.6	19.1	3.0	24.7	35.8	36.8	15.5	157.4	34.0	206.9
2003	3.4	3.5	2.1	17.5	2.4	21.9	35.1	36.3	13.6	158.6	34.8	207.0
2004	2.6	2.8	1.6	15.8	1.7	19.2	32.6	33.7	12.3	162.3	37.8	212.4
2005												
January	2.3	2.4	1.4	14.5	1.9	17.8	29.3	30.3	10.6	149.9	37.7	198.2
February	2.5	2.6	1.5	15.3	1.8	18.5	31.6	32.6	11.2	157.6	40.1	208.9
March	2.4	2.5	1.5	W	1.6	17.6	32.4	33.5	11.8	162.5	34.1	208.4
April	2.3	2.4	1.5	W	2.7	18.0	33.3	34.4	12.4	164.2	43.8	220.3
May	2.5	2.6	1.6	W	2.2	19.3	33.8	34.9	W	168.4	39.8	220.4
June	2.5	2.6	1.6	W	2.0	19.3	34.6	35.7	W	174.8	42.5	229.4
July	2.4	2.6	1.5	W	2.1	19.1	34.7	35.6	W	174.0	37.5	223.3
August	2.3	2.4	1.5	W	1.9	18.5	34.6	35.8	W	179.3	38.1	229.7
September	2.0	2.2	1.2	13.4	1.5	16.2	32.4	33.5	10.6	163.2	34.7	208.5
October	2.0	2.1	1.0	12.7	1.2	14.9	32.6	33.6	9.4	162.2	31.6	203.1
November	2.1	2.3	1.1	13.6	1.6	16.2	32.6	33.5	8.9	162.3	38.2	209.4
December	2.1	2.2	1.1	13.5	1.9	16.5	31.8	32.8	9.0	165.3	40.9	215.2
2005	2.3	2.4	1.4	14.4	1.9	17.7	32.8	33.8	11.0	165.4	38.2	214.6
2006												
January	2.0	2.1	1.0	12.1	1.9	14.9	31.0	32.0	7.9	150.9	29.5	188.3
February	2.2	2.3	1.0	13.5	1.3	15.8	33.3	34.3	8.2	160.7	37.7	206.6
March	2.2	2.3	W	W	1.8	16.7	33.8	34.8	8.6	164.2	32.0	204.7
April	2.1	2.2	W	W	1.3	15.7	34.7	35.9	10.0	167.8	40.5	218.4
May	2.0	2.2	1.1	14.3	1.5	17.0	34.3	35.5	9.8	171.5	42.6	223.8
June	2.1	2.3	1.2	14.7	1.6	17.5	34.9	36.1	10.3	175.5	47.1	232.9
July	2.0	2.2	1.2	14.3	1.2	16.7	34.9	36.0	10.3	172.7	38.7	221.7
August	2.2	2.3	1.2	14.6	1.2	17.1	36.0	37.1	9.9	176.6	47.6	234.1
September	2.2	2.3	W	W	1.9	17.4	34.3	35.3	8.7	167.0	42.5	218.3
October	2.2	2.3	W	13.8	W	16.5	34.1	35.1	7.4	164.4	35.4	207.2
November	2.2	2.3	0.9	13.8	2.2	16.9	33.0	33.9	7.3	165.5	34.1	207.0
December	2.1	2.2	0.9	13.6	2.6	17.1	32.8	33.4	7.1	164.6	41.3	213.1
2006	2.1	2.2	1.1	13.9	1.7	16.6	33.9	35.0	8.8	166.8	39.1	214.7
2007												
January	2.1	2.2	1.1	14.0	2.6	17.7	32.5	33.2	8.4	166.0	35.8	210.1
February	2.2	2.3	1.2	14.6	2.0	17.8	33.9	34.7	8.8	174.2	38.3	221.3
March	2.2	2.2	1.1	14.9	1.8	17.9	34.1	34.9	8.9	177.1	39.1	225.0
April	2.1	2.1	1.1	14.2	2.7	18.0	34.5	35.2	9.1	176.2	41.9	227.2
May	2.0	2.0	1.1	14.5	1.8	17.4	34.9	35.7	9.2	177.8	50.6	237.7
June	2.1	2.2	1.1	14.4	2.2	17.7	35.8	36.5	9.0	177.3	48.0	234.3
July	2.1	2.2	1.1	15.1	1.7	17.9	35.1	35.8	8.8	178.6	44.0	231.4
August	2.3	2.4	1.2	16.1	1.2	18.4	36.0	36.7	9.0	182.8	45.8	237.6
September	2.2	2.2	1.1	14.4	1.8	17.4	34.3	35.0	8.8	171.4	50.4	230.6
October	2.1	2.2	1.2	14.6	1.5	17.2	34.3	34.9	9.3	176.5	46.1	231.9
November	1.9	2.0	1.1	12.9	2.0	16.0	33.6	34.2	9.2	172.7	46.2	228.1
December	1.9	1.9	1.1	12.6	2.3	16.0	32.4	32.9	9.1	169.1	52.9	231.1
2007	2.1	2.2	1.1	14.4	2.0	17.4	34.3	35.0	9.0	175.0	44.9	228.9

Dash (-) = No data reported.

NA = Not available.

W = Withheld to avoid disclosure of individual company data.

^a Includes sales through retail outlets as well as all direct sales to end users that were not made through company-operated retail outlets, e.g., sales to agricultural customers, commercial sales, and industrial sales.

Notes: The 4th quarter of 1993 was a transitional period between the predecessor EIA-782 survey system and the revised EIA-782 survey system. The revised survey system contains additional product and sales categories, which may not be consistent with categories derived from the predecessor survey system. Beginning January 1994 all data are from the revised survey system and are consistent.

Note: Beginning January 2007, oxygenated gasoline is included in conventional gasoline.

Note: Totals may not equal the sum of the components due to rounding.

Source: Energy Information Administration Form EIA-782A, "Refiners'/Gas Plant Operators' Monthly Petroleum Product Sales Report."

Table 10. U.S. Refiner Reformulated Motor Gasoline Prices by Grade and Sales Type
(Cents per Gallon Excluding Taxes)

Year Month	Regular						Midgrade					
	Sales to End Users		Sales for Resale				Sales to End Users		Sales for Resale			
	Through Retail Outlets	Average ^a	DTW	Rack	Bulk	Average	Through Retail Outlets	Average ^a	DTW	Rack	Bulk	Average
1994	76.4	75.8	72.0	56.9	54.3	63.8	87.9	87.3	77.0	62.8	W	72.8
1995	74.9	74.4	70.7	60.5	57.3	65.0	83.6	83.3	75.3	65.1	-	72.3
1996	83.4	83.0	78.8	69.8	67.7	73.8	92.4	92.1	83.7	74.1	W	80.9
1997	83.0	82.8	78.7	68.2	66.8	73.1	92.8	92.5	84.0	72.5	W	80.7
1998	66.8	66.5	61.6	50.9	48.4	55.7	76.9	76.7	67.3	55.3	W	63.8
1999	80.4	80.0	75.2	64.2	60.1	68.6	89.5	89.2	80.7	67.6	NA	76.7
2000	112.6	112.3	105.8	97.8	95.3	101.2	121.9	121.7	111.4	101.4	-	108.5
2001	105.9	105.6	100.1	89.3	85.6	93.8	116.6	116.3	106.1	94.2	-	102.7
2002	94.6	94.4	90.6	83.4	77.9	86.1	105.2	105.0	98.8	87.5	-	95.8
2003	119.6	119.2	116.8	100.6	96.2	106.9	129.3	129.0	122.4	104.7	-	116.5
2004	147.2	147.0	144.7	129.9	124.8	135.3	157.2	157.0	149.4	134.0	-	143.6
2005												
January	138.7	138.6	132.7	128.7	122.2	129.5	149.6	149.5	139.6	133.4	-	137.1
February	147.7	147.6	143.2	134.7	127.1	137.0	158.2	158.1	149.3	140.1	-	145.6
March	164.3	164.1	160.0	153.1	142.4	154.4	174.7	174.6	166.1	159.1	-	163.2
April	183.9	183.7	181.0	164.4	158.3	169.6	194.7	194.6	186.3	170.7	-	179.9
May	176.7	176.4	174.3	153.7	149.6	159.8	188.4	188.2	180.0	158.3	-	170.8
June	173.9	173.7	169.3	163.7	154.6	164.0	184.7	184.6	176.0	168.5	-	172.8
July	189.4	189.3	185.3	176.0	172.8	178.9	200.7	200.6	191.7	181.4	-	187.3
August	210.8	210.6	203.9	200.3	189.8	200.0	221.7	221.5	210.9	205.8	-	208.7
September	243.4	243.2	232.5	223.5	220.3	226.3	253.9	253.8	239.1	230.6	-	235.5
October	227.2	226.9	217.4	192.1	189.8	200.3	237.6	237.5	223.9	199.6	-	213.7
November	185.0	184.7	180.2	158.2	150.7	164.5	196.7	196.6	186.6	164.2	-	176.9
December	171.3	171.2	162.2	161.6	156.0	161.1	182.1	182.0	169.9	166.8	-	168.6
2005	185.0	184.8	178.7	168.2	161.9	171.1	194.5	194.4	183.4	172.6	-	178.9
2006												
January	186.5	186.4	177.9	176.9	172.1	176.9	197.2	197.1	185.7	182.7	-	184.4
February	185.7	185.5	180.8	164.2	155.3	169.3	196.7	196.5	188.0	170.6	-	180.4
March	197.4	197.2	190.0	188.0	179.2	188.0	208.9	208.8	198.4	194.7	-	196.8
April	234.6	234.4	225.8	226.0	216.5	225.4	245.1	245.0	233.4	233.6	-	233.5
May	257.1	256.9	253.9	238.7	238.6	244.1	268.8	268.7	260.0	246.0	-	253.5
June	253.2	253.0	247.3	240.5	229.7	242.6	264.6	264.5	254.5	248.1	-	251.5
July	260.0	259.8	252.1	249.5	241.0	250.2	271.2	271.1	259.6	258.0	-	258.9
August	253.0	252.7	245.1	226.5	221.2	232.7	264.7	264.7	254.2	235.7	-	245.4
September	213.1	212.6	209.5	177.9	172.0	188.1	227.6	227.4	219.3	185.7	-	203.7
October	179.4	179.2	175.4	163.0	W	167.1	193.0	192.9	184.2	170.1	-	177.8
November	178.5	178.4	172.2	167.8	161.2	169.2	191.3	191.2	180.4	175.3	-	178.1
December	189.1	189.1	183.0	175.5	165.6	178.0	201.4	201.3	192.1	182.5	-	187.9
2006	216.6	216.4	209.7	200.2	188.5	203.0	227.5	227.4	217.0	207.8	-	212.9
2007												
January	183.4	183.2	180.3	159.2	147.1	166.4	197.3	197.2	187.8	166.7	-	178.3
February	188.4	188.3	185.1	176.7	169.1	179.7	202.4	202.4	193.3	184.6	-	189.4
March	221.1	220.9	221.1	206.6	199.4	211.6	235.0	234.9	229.3	214.3	-	222.4
April	246.5	246.3	243.8	232.4	224.9	236.0	260.0	259.9	253.4	242.4	-	248.4
May	268.9	268.7	260.7	252.6	235.2	254.3	281.7	281.6	270.7	260.6	-	266.0
June	258.5	258.2	248.5	234.9	229.3	239.1	272.1	272.0	258.6	243.5	-	251.5
July	248.6	248.3	237.7	230.0	228.0	232.5	261.6	261.5	247.2	238.6	-	243.1
August	230.4	230.1	217.2	211.9	208.6	213.5	243.2	243.2	226.2	220.2	-	223.3
September	229.5	229.3	217.9	215.9	212.3	216.3	242.6	242.5	227.7	223.8	-	225.9
October	233.4	233.2	227.2	219.2	215.4	221.8	247.8	247.7	237.3	226.7	-	232.4
November	260.3	260.0	253.7	243.4	242.0	246.9	273.8	273.8	262.9	250.6	-	257.2
December	256.2	256.0	249.2	234.9	233.0	239.8	270.2	270.1	257.9	241.4	-	250.2
2007	236.2	236.0	228.8	218.6	217.5	222.1	249.0	248.9	236.8	225.6	-	231.6

See footnotes at end of table.

Table 10. U.S. Refiner Reformulated Motor Gasoline Prices by Grade and Sales Type
(Cents per Gallon Excluding Taxes) — Continued

Year Month	Premium						All Grades					
	Sales to End Users		Sales for Resale				Sales to End Users		Sales for Resale			
	Through Retail Outlets	Average ^a	DTW	Rack	Bulk	Average	Through Retail Outlets	Average ^a	DTW	Rack	Bulk	Average
1994	96.6	95.8	86.1	67.7	55.8	77.7	83.1	82.4	77.1	59.9	54.7	68.7
1995	92.9	92.4	84.1	70.4	61.6	78.5	80.8	80.3	75.6	63.2	58.2	69.6
1996	100.2	99.8	91.0	79.1	70.9	85.9	88.2	87.8	82.8	72.0	68.2	77.4
1997	100.5	100.3	91.0	77.5	68.6	85.3	87.6	87.4	82.5	70.3	67.1	76.7
1998	84.7	84.5	74.1	W	51.6	68.0	71.7	71.4	65.7	52.9	48.9	59.3
1999	96.6	96.3	87.0	71.7	63.9	79.8	84.5	84.1	78.8	65.8	60.8	71.8
2000	129.7	129.1	118.9	106.4	97.2	112.5	116.4	116.0	109.2	99.3	95.7	103.9
2001	123.9	123.4	113.3	98.3	89.0	106.5	110.0	109.6	103.4	90.9	85.9	96.6
2002	112.4	111.9	104.6	93.0	83.2	99.1	98.7	98.5	94.4	85.1	78.5	89.1
2003	136.6	136.2	129.2	109.9	102.8	120.1	123.3	122.9	119.7	102.1	96.9	109.7
2004	165.5	165.2	157.4	139.9	134.8	148.9	151.0	150.7	147.4	131.3	125.7	137.8
2005												
January	158.3	158.1	147.0	138.2	127.5	141.3	142.7	142.6	135.9	130.1	123.0	131.7
February	166.6	166.4	156.7	145.2	130.5	149.2	151.5	151.4	146.2	136.3	127.6	139.3
March	182.0	181.7	173.0	165.1	159.0	168.6	167.8	167.6	162.8	154.8	144.2	156.9
April	202.1	201.9	194.1	176.3	173.5	184.9	187.4	187.1	183.7	166.0	159.6	172.1
May	197.4	197.1	188.2	164.3	157.3	175.3	180.7	180.4	177.3	155.1	150.1	162.4
June	193.8	193.5	183.7	175.0	166.1	178.6	177.7	177.5	172.4	165.3	155.4	166.4
July	209.3	209.1	199.9	189.9	189.3	194.6	193.2	193.0	188.3	177.8	174.5	181.5
August	229.4	229.1	218.6	214.1	206.9	215.6	214.2	214.0	206.8	202.0	191.3	202.4
September	262.1	261.8	247.2	239.5	225.9	241.1	246.7	246.5	235.3	225.4	221.3	228.6
October	246.9	246.7	231.4	206.7	201.1	215.9	230.8	230.5	220.1	193.9	192.3	203.1
November	207.3	207.0	194.9	171.4	165.1	182.4	189.0	188.8	183.2	159.9	151.7	167.4
December	193.7	193.5	177.0	174.0	171.2	175.3	175.2	175.1	165.3	163.2	156.9	163.3
2005	203.1	202.9	191.2	179.1	176.6	184.7	188.3	188.1	181.2	169.7	163.5	173.3
2006												
January	206.8	206.7	192.8	190.7	184.4	191.5	190.1	190.0	180.9	178.6	173.1	179.1
February	207.0	206.8	195.7	177.3	172.3	185.7	189.6	189.4	183.8	165.9	157.4	172.0
March	216.7	216.5	204.8	201.3	187.8	201.8	201.0	200.8	193.0	189.7	180.6	190.3
April	253.2	253.1	240.0	241.3	227.0	239.8	237.8	237.6	228.5	227.9	217.9	227.5
May	278.5	278.3	268.1	255.1	228.0	258.6	260.6	260.5	256.5	240.6	235.4	246.3
June	274.7	274.5	262.0	257.8	NA	258.8	256.8	256.6	250.1	242.5	229.0	245.0
July	281.6	281.3	266.7	268.4	238.4	265.2	263.6	263.4	254.8	251.7	240.3	252.5
August	275.4	275.1	260.6	245.9	230.9	251.9	256.8	256.4	248.2	228.8	223.3	235.7
September	238.8	238.4	225.6	195.3	182.4	208.0	217.8	217.3	212.9	180.1	174.3	191.5
October	203.7	203.5	192.6	W	W	183.0	183.9	183.7	178.9	165.0	155.2	169.8
November	201.7	201.5	188.9	183.7	NA	186.2	182.8	182.6	175.6	169.8	162.7	171.9
December	212.4	212.3	199.6	191.5	183.8	195.4	193.3	193.2	186.4	177.5	166.8	180.8
2006	236.9	236.7	223.9	214.9	200.4	218.3	220.2	220.0	212.5	202.0	190.6	205.5
2007												
January	208.3	208.2	197.6	176.3	172.4	186.8	188.0	187.8	183.7	161.4	148.7	169.6
February	212.7	212.5	202.8	194.0	193.9	198.4	192.9	192.7	188.6	179.0	171.3	182.6
March	245.2	245.2	238.9	225.7	219.7	232.1	225.4	225.2	224.4	209.0	200.6	214.7
April	270.0	269.8	262.2	253.1	231.4	256.1	250.7	250.5	247.3	234.9	225.8	239.1
May	292.0	291.8	279.4	270.7	257.3	274.4	272.8	272.6	264.2	254.8	237.1	257.2
June	283.4	283.2	267.7	255.2	237.2	259.2	262.7	262.5	252.2	237.3	230.9	242.2
July	273.3	273.1	256.9	250.3	247.6	253.4	252.9	252.6	241.4	232.5	229.1	235.6
August	255.4	255.1	236.1	232.3	220.0	233.8	234.8	234.5	220.9	214.4	209.5	216.5
September	254.0	253.8	237.1	234.8	229.8	235.7	233.9	233.7	221.7	218.3	213.6	219.3
October	259.0	258.8	246.5	238.6	238.5	242.4	238.0	237.8	230.9	221.6	217.7	224.9
November	285.4	285.2	272.9	260.9	256.1	266.7	264.5	264.3	257.3	245.4	243.0	249.7
December	282.5	282.2	268.3	251.2	244.7	259.3	260.7	260.5	252.8	236.8	234.1	242.6
2007	260.1	259.9	246.8	236.7	234.6	241.5	240.4	240.2	232.2	220.8	219.2	225.0

Dash (-) = No data reported.

NA = Not available.

W = Withheld to avoid disclosure of individual company data.

^a Includes sales through retail outlets as well as all direct sales to end users that were not made through company-operated retail outlets, e.g., sales to agricultural customers, commercial sales, and industrial sales.

Source: Energy Information Administration Form EIA-782A, "Refiners'/Gas Plant Operators' Monthly Petroleum Product Sales Report."

Table 11. U.S. Refiner Reformulated Motor Gasoline Volumes by Grade and Sales Type
(Million Gallons per Day)

Year Month	Regular						Midgrade					
	Sales to End Users		Sales for Resale				Sales to End Users		Sales for Resale			
	Through Retail Outlets	Total ^a	DTW	Rack	Bulk	Total	Through Retail Outlets	Total ^a	DTW	Rack	Bulk	Total
1994	0.6	0.6	2.1	1.6	0.6	4.3	0.2	0.2	0.7	0.3	W	1.0
1995	7.8	8.1	20.7	W	W	43.3	3.0	3.1	7.4	3.1	-	10.5
1996	10.7	11.1	26.1	20.5	8.0	54.6	3.3	3.4	7.9	3.3	W	11.3
1997	13.4	13.8	28.0	21.7	7.6	57.3	3.6	3.7	7.9	3.1	W	11.0
1998	14.3	14.5	28.6	23.0	8.3	59.9	3.7	3.8	7.4	3.1	W	10.5
1999	14.5	14.8	29.8	26.1	9.6	65.5	3.6	3.7	7.0	3.1	NA	10.2
2000	15.5	15.9	32.1	29.1	8.5	69.6	3.3	3.4	6.2	2.6	-	8.8
2001	16.3	16.7	32.7	30.0	9.0	71.7	3.3	3.3	5.7	2.2	-	7.9
2002	16.9	17.2	33.1	30.4	8.2	71.7	3.3	3.3	5.6	2.1	-	7.6
2003	17.7	18.0	30.9	35.1	7.6	73.6	3.1	3.1	4.1	2.0	-	6.1
2004	16.2	16.5	29.5	39.7	6.1	75.3	2.6	2.6	3.3	2.0	-	5.2
2005												
January	15.4	15.7	26.3	39.1	7.5	72.9	2.6	2.6	2.7	1.8	-	4.4
February	16.4	16.7	27.9	40.6	7.9	76.4	2.7	2.7	2.8	1.9	-	4.6
March	16.8	17.1	28.5	42.2	8.6	79.3	2.7	2.7	2.7	1.9	-	4.6
April	17.3	17.6	28.1	43.4	8.3	79.8	2.6	2.7	2.5	1.8	-	4.3
May	17.1	17.3	27.3	44.8	11.6	83.7	2.6	2.7	2.5	1.9	-	4.4
June	18.1	18.4	28.5	44.7	14.6	87.7	2.8	2.8	2.6	1.9	-	4.5
July	17.8	18.1	27.8	43.9	8.3	80.0	2.7	2.7	2.5	1.9	-	4.4
August	18.1	18.4	28.1	46.0	11.4	85.5	2.6	2.6	2.4	1.9	-	4.2
September	17.4	17.7	27.5	43.0	8.4	78.8	2.5	2.5	2.2	1.6	-	3.8
October	16.2	16.5	26.8	43.7	9.1	79.6	2.3	2.3	2.2	1.6	-	3.7
November	17.1	17.4	25.9	45.4	8.4	79.8	2.5	2.5	2.2	1.7	-	3.8
December	18.0	18.3	27.1	44.7	9.5	81.3	2.6	2.7	2.2	1.7	-	3.9
2005	17.1	17.4	27.5	43.5	9.5	80.4	2.6	2.6	2.5	1.8	-	4.2
2006												
January	16.8	17.1	26.4	42.3	5.6	74.3	2.4	2.5	2.0	1.5	-	3.5
February	17.6	17.9	26.6	45.1	5.4	77.1	2.6	2.6	2.1	1.6	-	3.7
March	17.7	18.0	27.2	44.9	5.9	78.1	2.6	2.6	2.1	1.6	-	3.7
April	18.2	18.5	27.2	45.8	4.7	77.7	2.5	2.5	2.0	1.5	-	3.5
May	18.1	18.3	26.9	46.7	2.5	76.0	2.4	2.4	1.9	1.6	-	3.5
June	18.6	18.9	27.6	46.9	2.3	76.7	2.5	2.5	1.9	1.6	-	3.5
July	18.3	18.6	27.3	45.2	2.3	74.8	2.5	2.5	1.8	1.6	-	3.4
August	18.0	18.3	26.6	48.2	2.6	77.3	2.4	2.4	1.8	1.6	-	3.4
September	17.5	17.8	24.9	46.7	3.5	75.0	2.4	2.5	1.7	1.5	-	3.2
October	17.7	17.9	26.4	W	W	74.8	2.5	2.5	1.8	1.5	-	3.2
November	17.1	17.4	27.1	45.2	2.0	74.4	2.4	2.4	1.8	1.5	-	3.3
December	17.0	17.2	27.6	45.6	1.9	75.1	2.5	2.5	1.9	1.5	-	3.4
2006	17.7	18.0	26.8	45.7	3.4	75.9	2.5	2.5	1.9	1.5	-	3.4
2007												
January	16.3	16.5	26.0	44.0	2.4	72.4	2.4	2.4	1.7	1.4	-	3.1
February	16.9	17.1	27.3	44.2	1.8	73.4	2.5	2.5	1.8	1.4	-	3.2
March	17.1	17.4	27.9	45.4	2.8	76.2	2.4	2.4	1.7	1.4	-	3.1
April	17.0	17.3	27.2	44.5	4.4	76.1	2.4	2.4	1.6	1.4	-	3.0
May	17.8	18.1	27.2	45.3	5.2	77.7	2.4	2.4	1.6	1.3	-	2.9
June	18.8	19.1	26.4	47.2	4.6	78.2	2.5	2.5	1.5	1.4	-	2.9
July	17.6	17.9	25.9	44.7	4.7	75.3	2.4	2.4	1.5	1.4	-	2.8
August	17.8	18.1	26.3	46.8	4.3	77.3	2.4	2.5	1.5	1.4	-	2.9
September	17.4	17.7	25.8	44.5	5.0	75.2	2.4	2.4	1.5	1.3	-	2.8
October	17.6	17.8	27.0	45.9	3.5	76.4	2.4	2.4	1.5	1.3	-	2.8
November	17.3	17.5	26.7	45.8	3.8	76.2	2.3	2.3	1.4	1.2	-	2.6
December	16.7	16.9	26.4	46.3	3.6	76.3	2.3	2.3	1.4	1.2	-	2.6
2007	17.4	17.6	26.7	45.4	3.8	75.9	2.4	2.4	1.6	1.3	-	2.9

See footnotes at end of table.

Table 11. U.S. Refiner Reformulated Motor Gasoline Volumes by Grade and Sales Type
(Million Gallons per Day) — Continued

Year Month	Premium						All Grades					
	Sales to End Users		Sales for Resale				Sales to End Users		Sales for Resale			
	Through Retail Outlets	Total ^a	DTW	Rack	Bulk	Total	Through Retail Outlets	Total ^a	DTW	Rack	Bulk	Total
1994	0.2	0.2	1.2	0.5	0.2	1.9	1.0	1.0	4.0	2.4	0.8	7.2
1995	3.1	3.2	12.0	W	W	18.9	14.0	14.4	40.1	25.9	6.6	72.6
1996	3.1	3.2	11.7	5.3	1.5	18.6	17.0	17.6	45.7	29.2	9.6	84.5
1997	3.4	3.5	11.5	5.3	1.5	18.2	20.3	21.0	47.4	30.1	9.1	86.6
1998	3.8	3.9	12.2	W	1.6	19.8	21.8	22.2	48.2	32.0	9.9	90.1
1999	3.4	3.5	11.4	6.3	1.9	19.6	21.5	22.0	48.2	35.6	11.5	95.2
2000	3.0	3.1	9.6	5.4	1.9	16.8	21.9	22.4	47.9	37.0	10.4	95.2
2001	3.2	3.2	9.2	5.4	1.1	15.7	22.7	23.3	47.7	37.6	10.0	95.3
2002	3.4	3.5	9.5	5.6	1.1	16.3	23.6	24.1	48.2	38.0	9.3	95.6
2003	3.5	3.6	8.5	5.9	1.0	15.3	24.2	24.7	43.5	43.0	8.6	95.1
2004	3.1	3.1	7.4	6.0	0.6	14.1	21.9	22.3	40.2	47.7	6.7	94.6
2005												
January	2.8	2.9	6.8	5.9	1.5	14.3	20.9	21.2	35.9	46.8	9.0	91.6
February	3.0	3.0	7.0	6.2	1.5	14.6	22.1	22.5	37.7	48.6	9.3	95.7
March	2.8	2.9	6.9	6.1	1.0	13.9	22.3	22.7	38.0	50.1	9.6	97.7
April	2.8	2.8	6.5	5.9	0.8	13.1	22.7	23.0	37.1	51.0	9.1	97.2
May	2.9	2.9	6.6	6.4	0.8	13.9	22.6	22.9	36.5	53.1	12.4	102.0
June	3.0	3.0	7.0	6.5	1.0	14.5	23.9	24.3	38.1	53.0	15.6	106.7
July	2.9	2.9	6.5	6.2	0.9	13.7	23.4	23.7	36.9	52.0	9.2	98.0
August	2.7	2.7	6.3	6.0	1.1	13.3	23.4	23.7	36.7	53.8	12.5	103.1
September	2.5	2.5	5.7	5.1	1.7	12.6	22.4	22.7	35.4	49.7	10.1	95.2
October	2.6	2.6	5.8	5.6	2.6	14.0	21.1	21.4	34.8	50.9	11.6	97.3
November	2.8	2.8	6.2	6.1	0.6	12.9	22.4	22.7	34.2	53.2	9.0	96.4
December	2.9	2.9	6.4	6.0	0.6	13.0	23.5	23.8	35.7	52.3	10.1	98.2
2005	2.8	2.8	6.5	6.0	1.2	13.6	22.6	22.9	36.4	51.2	10.6	98.3
2006												
January	2.6	2.6	5.9	5.4	0.5	11.8	21.8	22.2	34.3	49.2	6.1	89.6
February	2.8	2.8	6.1	6.0	0.8	12.8	23.0	23.4	34.7	52.7	6.2	93.6
March	2.8	2.8	6.1	5.8	1.1	13.1	23.1	23.4	35.4	52.4	7.0	94.9
April	2.7	2.7	5.7	5.5	0.7	12.0	23.4	23.7	34.9	52.9	5.4	93.2
May	2.5	2.5	5.5	5.7	1.1	12.2	23.0	23.3	34.2	54.0	3.5	91.7
June	2.7	2.7	5.8	5.7	NA	11.9	23.8	24.1	35.2	54.2	2.6	92.1
July	2.6	2.6	5.7	5.5	1.0	12.1	23.4	23.7	34.8	52.2	3.3	90.3
August	2.6	2.6	5.7	5.9	0.7	12.4	23.0	23.4	34.1	55.7	3.3	93.1
September	2.8	2.8	5.8	6.1	1.0	12.8	22.7	23.0	32.4	54.2	4.4	91.0
October	2.8	2.9	6.1	W	W	13.5	23.0	23.3	34.3	53.6	3.7	91.6
November	2.8	2.8	6.1	6.2	0.2	12.5	22.3	22.7	35.0	52.9	2.2	90.2
December	2.7	2.7	6.2	6.2	0.1	12.5	22.2	22.4	35.7	53.3	2.0	91.0
2006	2.7	2.7	5.9	5.9	0.7	12.5	22.9	23.2	34.6	53.1	4.1	91.8
2007												
January	2.6	2.6	5.9	5.9	0.2	12.0	21.2	21.5	33.6	51.3	2.5	87.5
February	2.6	2.7	6.2	6.0	0.2	12.4	21.9	22.2	35.2	51.7	2.0	89.0
March	2.6	2.6	5.9	5.9	0.2	12.1	22.0	22.4	35.5	52.8	3.0	91.4
April	2.5	2.5	5.8	5.6	0.8	12.1	21.9	22.2	34.6	51.5	5.2	91.3
May	2.5	2.6	5.7	5.7	0.5	11.9	22.7	23.1	34.5	52.3	5.7	92.5
June	2.8	2.8	5.7	5.9	1.1	12.7	24.1	24.4	33.6	54.5	5.7	93.8
July	2.7	2.7	5.7	5.8	0.3	11.8	22.7	23.0	33.1	51.8	5.0	89.9
August	2.8	2.9	5.9	6.1	0.3	12.4	23.1	23.4	33.7	54.3	4.7	92.6
September	2.8	2.8	5.8	6.0	0.4	12.2	22.7	22.9	33.1	51.8	5.4	90.2
October	2.7	2.7	6.0	6.0	0.4	12.4	22.7	22.9	34.5	53.2	3.9	91.6
November	2.5	2.5	5.6	5.5	0.3	11.4	22.1	22.4	33.7	52.6	4.0	90.3
December	2.5	2.5	5.6	5.6	0.3	11.6	21.5	21.7	33.5	53.1	3.9	90.5
2007	2.6	2.7	5.8	5.9	0.4	12.1	22.4	22.7	34.0	52.6	4.3	90.9

Dash (-) = No data reported.

NA = Not available.

W = Withheld to avoid disclosure of individual company data.

^a Includes sales through retail outlets as well as all direct sales to end users that were not made through company-operated retail outlets, e.g., sales to agricultural customers, commercial sales, and industrial sales.

Note: Totals may not equal the sum of the components due to rounding.

Source: Energy Information Administration Form EIA-782A, "Refiners'/Gas Plant Operators' Monthly Petroleum Product Sales Report."

Table 12. U.S. Propane (Consumer Grade) Prices by Sales Type
(Cents per Gallon Excluding Taxes)

Year Month	Sales to End Users							Sales for Resale
	Residential Consumers	Commercial/ Institutional Consumers	Industrial Consumers	Through Retail Outlets	Petro- Chemical	Other End Users	Average	
1994	87.2	76.5	65.2	73.6	31.1	63.4	77.6	33.6
1995	86.5	77.7	64.6	74.7	32.4	66.2	76.6	35.4
1996	99.1	88.4	73.3	75.7	41.3	76.4	88.6	47.1
1997	99.6	90.5	77.8	72.6	38.4	74.3	87.8	42.6
1998	88.8	81.6	69.2	67.6	27.0	64.7	77.4	29.7
1999	88.5	80.8	73.4	85.3	34.1	65.9	78.1	35.4
2000	117.3	104.8	99.0	110.4	54.1	90.7	104.8	60.3
2001	128.5	113.5	107.4	119.0	47.8	95.4	109.4	55.6
2002	108.6	92.9	92.4	104.0	39.3	84.0	95.8	44.0
2003	127.4	109.8	108.1	W	55.9	104.9	115.0	61.5
2004	144.3	126.2	122.4	W	71.4	117.6	130.7	76.1
2005								
January	156.1	137.9	135.1	W	NA	127.2	144.7	NA
February	158.5	137.1	134.0	W	NA	128.0	142.1	NA
March	159.3	138.9	135.8	W	NA	130.8	142.8	NA
April	164.3	139.4	139.8	W	85.5	143.3	147.4	87.1
May	164.5	139.0	138.6	W	79.7	149.8	145.6	83.2
June	160.6	137.7	137.4	W	81.3	149.0	141.8	84.0
July	155.5	139.2	139.1	W	84.1	144.1	140.2	87.1
August	155.7	141.6	143.1	W	93.1	141.0	143.6	93.8
September	172.2	155.6	157.5	W	105.4	145.3	158.0	108.2
October	182.3	165.0	163.6	W	NA	138.0	166.6	112.3
November	184.6	163.4	161.9	W	101.3	145.2	171.2	104.5
December	183.8	165.2	163.9	W	104.7	148.4	174.3	107.8
2005	167.5	147.5	146.1	W	85.9	139.6	153.0	93.9
2006								
January	187.8	165.1	163.5	W	101.5	151.0	172.5	105.0
February	185.5	161.8	160.6	W	93.4	150.3	171.8	98.7
March	185.2	160.4	157.5	W	92.4	152.3	173.2	97.7
April	190.6	163.3	162.5	W	100.3	169.8	173.7	102.7
May	191.4	165.8	165.0	W	102.0	182.2	174.5	104.0
June	189.3	168.1	164.6	W	106.1	182.8	173.1	107.3
July	184.8	171.2	170.8	W	109.9	173.6	173.5	112.1
August	186.7	170.7	173.5	W	108.8	162.4	174.3	112.5
September	189.2	169.0	168.4	W	102.9	148.2	171.2	104.2
October	185.5	163.8	163.9	W	93.9	140.6	166.7	101.6
November	186.9	163.7	162.5	W	93.9	144.9	170.6	102.2
December	191.5	169.4	165.7	W	97.3	148.5	178.0	104.3
2006	187.7	165.4	164.3	W	99.5	153.3	172.7	104.1
2007								
January	191.7	167.6	167.0	W	90.2	150.0	180.0	100.7
February	192.0	169.6	166.9	W	95.8	150.3	180.4	104.5
March	197.4	171.6	170.3	W	100.5	154.0	181.3	106.1
April	198.4	171.2	172.0	W	108.2	162.8	176.1	108.0
May	203.4	172.9	176.7	W	112.5	200.7	179.4	112.4
June	200.4	173.7	177.1	W	111.9	195.5	179.9	111.0
July	193.6	174.9	179.6	W	115.3	NA	172.3	117.1
August	191.7	175.8	179.6	W	116.8	171.4	177.8	118.0
September	197.4	179.5	185.9	W	125.3	171.3	182.3	125.8
October	211.3	191.9	197.7	W	137.0	171.7	193.7	135.9
November	229.1	208.6	214.0	W	150.1	191.5	215.1	147.9
December	230.4	211.9	216.1	W	148.1	193.9	219.4	147.6
2007	204.2	181.4	183.7	W	119.7	170.5	188.8	120.6

NA = Not available.

W = Withheld to avoid disclosure of individual company data.

Notes: The 4th quarter of 1993 was a transitional period between the predecessor EIA-782 survey system and the revised EIA-782 survey system. The revised survey system contains additional product and sales categories, which may not be consistent with categories derived from the predecessor survey system. Beginning January 1994 all data are from the revised survey system and are consistent.

Sources: Energy Information Administration Forms EIA-782A, "Refiners'/Gas Plant Operators' Monthly Petroleum Product Sales Report," and EIA-782B, "Resellers'/Retailers' Monthly Petroleum Product Sales Report."

Table 13. U.S. No. 2 Distillate^a Prices by Sales Type
(Cents per Gallon Excluding Taxes)

Year Month	Sales to End Users						Sales for Resale
	Residential Consumers	Commercial/ Institutional Consumers	Industrial Consumers	Through Retail Outlets ^b	Other End Users ^c	Average	
1983	107.8	86.3	88.3	94.3	89.7	93.3	81.8
1984	109.1	85.7	87.0	92.0	89.2	92.6	81.9
1985	105.3	82.1	83.4	88.6	85.3	89.0	78.1
1986	83.6	51.4	53.7	59.8	56.9	61.4	48.0
1987	80.3	56.6	59.7	64.4	63.1	64.3	53.5
1988	81.3	51.9	54.2	61.6	58.7	61.2	48.2
1989	90.0	60.8	63.8	68.5	66.7	69.5	57.2
1990	106.3	75.1	78.0	85.2	82.8	84.1	70.6
1991	101.9	67.5	69.7	74.5	73.8	76.0	62.7
1992	93.4	63.7	67.5	72.1	72.1	72.6	59.1
1993	91.1	62.0	66.7	71.1	70.5	71.0	56.6
1994	88.4	58.7	64.1	67.3	65.5	67.5	52.9
1995	86.7	59.3	64.4	67.0	67.3	67.3	53.6
1996	98.9	71.4	77.1	78.8	79.3	79.3	66.0
1997	98.4	67.4	71.2	74.5	75.3	75.3	61.1
1998	85.2	52.5	55.6	59.3	60.0	59.9	45.0
1999	87.6	60.5	63.9	68.5	68.7	67.8	53.8
2000	131.1	96.2	99.1	103.6	105.0	104.4	90.1
2001	125.0	86.1	90.7	94.3	96.0	94.8	78.5
2002	112.9	79.2	82.6	86.2	87.8	87.4	72.8
2003	135.5	97.0	100.3	104.4	102.1	105.8	89.1
2004	154.8	126.3	131.0	134.8	133.3	133.9	117.8
2005							
January	180.8	140.5	144.5	148.4	144.6	152.4	132.2
February	184.6	147.4	149.8	154.3	153.3	157.9	138.9
March	194.0	165.4	167.2	173.0	172.3	173.6	158.2
April	196.7	169.8	172.4	179.9	178.2	177.2	163.1
May	191.6	159.6	163.2	170.8	171.3	167.7	152.1
June	198.8	173.0	175.2	181.2	181.4	178.5	167.0
July	204.2	178.6	180.8	188.8	187.3	184.9	171.4
August	218.4	197.2	198.5	204.4	204.1	202.0	189.2
September	242.3	219.8	223.6	234.0	230.8	228.2	212.2
October	244.3	233.8	236.6	257.6	248.4	245.7	229.0
November	232.1	192.1	199.0	209.9	207.4	205.3	182.9
December	231.2	185.9	188.8	195.8	194.2	198.4	176.3
2005	205.2	180.3	185.2	193.3	192.7	189.5	172.7
2006							
January	233.4	189.3	193.3	197.0	197.3	200.1	181.2
February	231.2	188.6	192.6	198.1	196.7	200.4	179.7
March	235.3	197.6	199.7	206.2	205.6	207.2	189.1
April	242.7	218.6	219.5	226.9	226.4	224.8	211.1
May	246.8	226.6	227.4	240.6	234.3	234.5	217.6
June	245.7	224.4	226.5	239.9	234.2	233.3	217.7
July	246.0	229.6	231.3	243.6	241.9	238.0	223.8
August	249.9	237.6	239.8	253.0	251.0	246.7	232.5
September	238.3	202.2	208.8	222.9	215.0	215.0	191.7
October	230.2	191.9	196.6	202.2	204.0	201.0	182.9
November	234.3	195.2	199.9	204.2	206.7	204.3	186.3
December	238.0	198.8	200.9	210.4	207.8	209.6	188.1
2006	236.5	208.2	212.3	220.8	219.9	217.6	199.9
2007							
January	231.1	182.0	186.8	195.9	191.9	196.5	170.3
February	239.1	194.0	196.0	199.0	200.7	205.2	182.6
March	244.9	205.2	209.6	217.7	215.8	216.9	196.3
April	248.0	217.1	222.1	233.8	228.6	228.2	210.6
May	248.0	218.2	226.3	229.3	229.2	226.4	210.9
June	249.2	224.8	230.5	231.7	231.6	230.0	215.2
July	254.9	231.6	236.9	237.8	239.2	236.5	222.4
August	250.9	227.8	235.7	236.9	237.6	234.6	219.5
September	260.9	240.9	246.5	246.9	248.6	245.9	232.5
October	275.9	252.7	259.1	257.8	260.5	257.9	243.0
November	304.0	280.4	284.7	287.2	285.7	286.6	269.5
December	309.8	272.1	276.8	281.3	277.1	282.5	261.4
2007	259.2	227.7	233.1	237.9	238.4	236.5	220.8

^a Includes sales of No. 2 fuel oil and diesel fuels.

^b Includes ultra-low and low-sulfur diesel fuels only.

^c All end-user sales not included in the other end-user categories shown, e.g., sales to agricultural customers or utilities.

Sources: Energy Information Administration Forms EIA-782A, "Refiners'/Gas Plant Operators' Monthly Petroleum Product Sales Report," and EIA-782B, "Resellers'/Retailers' Monthly Petroleum Product Sales Report."

Table 14. U.S. No. 2 Diesel Fuel Prices by Sulfur Content and Sales Type
(Cents per Gallon Excluding Taxes)

Year Month	Ultra Low-Sulfur Diesel Fuel						Low-Sulfur Diesel Fuel					
	Sales to End Users					Sales for Resale	Sales to End Users					Sales for Resale
	Commercial/ Institutional Consumers	Industrial Consumers	Through Retail Outlets	Other End Users ^a	Average		Commercial/ Institutional Consumers	Industrial Consumers	Through Retail Outlets	Other End Users ^a	Average	
1994	-	-	-	-	-	-	59.1	66.0	67.3	67.4	64.2	54.2
1995	-	-	-	-	-	-	59.8	66.3	67.0	68.4	64.5	55.1
1996	-	-	-	-	-	-	72.3	79.1	78.8	80.6	76.7	67.3
1997	-	-	-	-	-	-	67.0	72.2	74.5	76.0	71.9	61.9
1998	-	-	-	-	-	-	51.5	55.7	59.3	60.1	56.5	45.7
1999	-	-	-	-	-	-	61.7	64.3	68.5	70.4	66.3	55.7
2000	-	-	-	-	-	-	96.8	97.1	103.6	106.2	101.4	90.9
2001	-	-	-	-	-	-	86.8	89.1	94.3	94.9	91.7	79.4
2002	-	-	-	-	-	-	80.1	81.9	86.2	85.8	84.1	73.8
2003	-	-	-	-	-	-	97.2	99.7	104.4	100.9	101.4	89.5
2004	-	-	-	-	-	-	128.4	131.8	134.8	132.9	132.5	119.7
2005												
January	-	-	-	-	-	-	140.7	144.6	148.4	143.7	145.5	132.2
February	-	-	-	-	-	-	148.4	151.8	154.3	153.0	152.3	140.7
March	-	-	-	-	-	-	167.2	170.0	173.0	172.3	171.0	160.3
April	-	-	-	-	-	-	172.3	176.2	179.9	178.8	177.3	165.5
May	-	-	-	-	-	-	161.8	166.0	170.8	169.2	167.6	154.1
June	-	-	-	-	-	-	174.6	176.6	181.2	179.6	178.7	168.6
July	-	-	-	-	-	-	180.1	182.9	188.8	187.8	185.8	172.7
August	-	-	-	-	-	-	200.5	202.6	204.4	205.2	203.3	191.7
September	-	-	-	-	-	-	223.3	227.8	234.0	230.2	230.0	215.4
October	-	-	-	-	-	-	239.1	240.4	257.6	248.4	250.1	235.2
November	-	-	-	-	-	-	194.0	200.2	209.9	204.2	204.1	185.1
December	-	-	-	-	-	-	186.6	189.5	195.8	192.4	192.3	177.9
2005	-	-	-	-	-	-	183.1	188.3	193.3	193.0	189.9	176.1
2006												
January	-	-	-	-	-	-	191.2	194.8	197.0	196.1	195.4	183.4
February	-	-	-	-	-	-	191.8	196.1	198.1	196.5	196.3	183.5
March	-	-	-	-	-	-	200.7	203.2	206.2	205.3	204.6	192.9
April	-	-	-	-	-	-	223.0	223.2	226.9	228.4	225.9	215.0
May	-	-	-	-	-	-	231.6	232.5	240.6	236.6	237.3	221.4
June	-	-	-	-	-	-	229.8	231.5	239.9	236.5	236.4	222.3
July	-	-	-	-	-	-	234.6	236.8	243.6	244.0	241.0	229.3
August	-	-	-	-	-	-	242.1	246.2	253.0	253.3	249.8	238.0
September	-	-	-	-	-	-	203.5	211.4	222.9	214.7	216.2	194.1
October	-	-	-	-	-	-	193.3	198.6	202.2	202.9	199.8	185.3
November	-	-	-	-	-	-	198.3	202.8	204.2	206.3	202.8	189.7
December	-	-	-	-	-	-	202.4	204.9	210.4	209.1	207.8	192.2
2006	-	-	-	-	-	-	212.2	215.9	220.8	220.7	218.3	204.5
2007												
January	185.5	193.4	197.8	193.4	193.5	173.7	177.2	185.8	192.5	193.0	188.3	169.3
February	198.2	200.6	201.1	204.1	200.7	187.0	190.0	194.7	195.5	199.4	194.8	180.5
March	212.3	218.4	219.1	219.4	217.1	203.6	205.4	211.4	215.3	214.9	213.1	197.4
April	223.7	231.1	234.9	231.8	230.8	216.8	217.9	222.7	231.8	230.7	228.3	209.5
May	221.9	231.3	231.8	231.5	228.7	214.9	216.4	223.0	224.6	231.8	223.7	207.4
June	228.1	233.4	233.7	234.3	232.1	217.9	220.8	227.5	227.4	232.0	226.6	212.7
July	234.3	239.4	239.6	241.7	238.4	224.9	227.2	232.3	233.7	238.0	232.6	218.7
August	229.2	236.7	238.6	239.3	235.8	222.2	224.2	233.1	233.0	237.7	231.4	215.5
September	242.7	247.3	248.2	249.1	246.7	235.4	237.0	244.9	243.9	250.9	243.2	229.0
October	254.7	260.4	259.7	262.1	258.7	245.9	248.8	256.0	253.5	261.3	253.7	239.9
November	282.0	285.4	288.8	286.5	286.2	272.2	276.4	284.3	283.6	284.7	282.1	269.8
December	271.2	276.2	282.8	275.8	278.0	262.4	267.3	273.4	277.9	281.4	275.4	262.3
2007	233.7	240.3	240.5	241.0	238.6	225.8	226.1	228.2	232.4	241.1	231.7	221.1

See footnotes at end of table.

Table 14. U.S. No. 2 Diesel Fuel Prices by Sulfur Content and Sales Type
(Cents per Gallon Excluding Taxes) — Continued

Year Month	High-Sulfur Diesel Fuel					Total Diesel Fuel					
	Sales to End Users				Sales for Resale	Sales to End Users					Sales for Resale
	Commercial/ Institutional Consumers	Industrial Consumers	Other End Users ^a	Average		Commercial/ Institutional Consumers	Industrial Consumers	Through Retail Outlets	Other End Users ^a	Average	
1994	55.3	62.9	64.6	59.8	51.9	57.7	64.5	67.3	66.1	62.8	53.8
1995	56.8	63.6	66.7	61.4	52.4	58.8	64.9	67.0	67.7	63.6	54.6
1996	68.7	75.9	78.4	73.2	63.9	71.1	77.5	78.8	79.6	75.7	66.7
1997	65.9	70.8	75.3	69.8	60.2	66.6	71.5	74.5	75.7	71.4	61.6
1998	51.8	56.7	60.8	55.5	43.7	51.6	56.2	59.3	60.4	56.2	45.4
1999	58.0	64.8	67.6	62.0	51.9	60.5	64.5	68.5	69.4	65.4	55.2
2000	93.8	101.7	103.9	98.1	87.5	95.8	99.0	103.6	105.2	100.6	90.4
2001	83.7	93.3	98.0	89.2	77.1	85.7	90.7	94.3	96.0	91.2	79.1
2002	76.7	83.9	91.3	82.2	71.2	78.9	82.6	86.2	87.9	83.7	73.5
2003	94.1	101.8	104.4	98.6	87.0	96.1	100.4	104.4	102.2	100.8	89.1
2004	123.7	132.2	135.4	128.1	114.6	126.8	131.9	134.8	133.7	131.6	119.1
2005											
January	136.9	146.1	146.5	141.1	130.6	139.4	145.2	148.4	144.7	144.6	132.0
February	145.9	149.1	154.8	148.8	136.9	147.6	150.7	154.3	153.7	151.6	140.2
March	164.2	165.3	171.9	166.6	156.4	166.2	168.2	173.0	172.1	170.1	159.8
April	167.2	168.8	177.6	170.7	158.9	170.7	173.4	179.9	178.3	175.9	164.7
May	157.3	160.8	175.0	162.4	147.8	160.3	164.1	170.8	171.3	166.6	153.4
June	171.2	174.5	184.8	175.3	164.5	173.5	175.8	181.2	181.5	178.0	168.2
July	177.2	178.5	186.7	179.8	169.9	179.1	181.3	188.8	187.4	184.6	172.4
August	193.5	193.7	202.6	195.9	186.3	198.0	199.4	204.4	204.3	201.8	191.1
September	216.1	219.3	233.6	221.3	207.6	220.9	224.6	234.0	231.3	228.2	214.5
October	230.2	235.9	250.9	236.6	225.2	236.0	238.7	257.6	249.3	247.3	234.0
November	190.2	200.0	213.9	197.5	180.2	192.8	200.1	209.9	207.5	202.8	184.5
December	181.8	189.7	198.8	186.8	172.8	185.0	189.5	195.8	194.3	191.3	177.2
2005	178.8	183.3	193.2	183.3	170.4	181.7	186.4	193.3	193.1	188.6	175.4
2006											
January	184.2	193.4	200.0	189.3	176.5	188.8	194.3	197.0	197.4	194.3	182.4
February	182.6	189.8	197.2	187.4	173.2	188.8	193.6	198.1	196.7	194.8	182.1
March	192.7	196.8	206.5	196.7	183.0	198.1	200.8	206.2	205.7	203.2	191.6
April	213.3	216.3	222.8	216.4	204.9	219.7	220.5	226.9	226.4	224.1	213.7
May	220.3	222.4	231.0	223.4	208.8	227.7	228.5	240.6	234.6	234.6	219.9
June	216.3	221.8	230.4	221.0	206.0	225.3	227.6	239.9	234.5	233.5	220.4
July	222.0	225.8	239.2	227.1	210.5	230.4	232.4	243.6	242.4	238.4	227.0
August	231.2	233.4	248.3	227.1	219.3	238.7	241.0	253.0	251.6	247.3	236.0
September	200.3	207.2	216.3	205.7	185.4	202.5	209.8	222.9	215.2	214.3	193.1
October	188.7	195.3	206.0	194.8	176.0	191.9	197.4	202.2	204.0	198.9	184.3
November	188.7	196.9	208.2	195.2	177.1	195.4	200.7	204.2	206.9	201.5	188.4
December	191.3	196.7	205.6	195.4	176.9	198.8	202.1	210.4	208.0	205.7	190.2
2006	203.1	209.5	219.5	208.4	191.5	209.2	213.5	220.8	220.3	216.5	202.9
2007											
January	175.3	181.4	187.4	178.9	160.2	181.0	187.7	195.9	192.0	190.0	171.1
February	184.5	192.2	196.5	188.1	172.2	192.9	196.7	199.0	201.8	197.3	184.2
March	192.0	197.2	207.9	196.1	179.2	205.7	211.0	217.7	216.2	213.2	199.8
April	204.9	207.6	219.8	208.2	193.1	217.9	223.4	233.8	229.3	227.1	213.3
May	210.2	218.3	222.4	214.7	198.6	218.5	226.8	229.3	229.7	225.8	212.4
June	218.5	225.7	225.5	221.5	206.2	225.0	230.9	231.7	232.1	229.6	216.3
July	227.8	234.3	233.3	230.4	216.8	231.9	237.2	237.8	239.5	236.3	223.5
August	227.3	235.2	233.8	230.5	215.6	227.9	235.8	236.9	238.1	234.3	220.8
September	238.4	245.7	244.1	241.3	229.8	241.0	246.6	246.9	248.7	245.4	234.1
October	248.9	256.8	252.0	251.3	237.8	252.8	259.1	257.8	260.5	256.9	244.6
November	281.0	283.4	282.5	282.1	265.4	280.7	284.9	287.2	285.5	284.9	271.6
December	280.7	286.2	276.2	280.5	258.6	271.4	276.8	281.3	276.8	277.5	262.3
2007	213.4	221.0	229.7	218.7	195.9	228.4	233.9	237.9	239.0	234.8	223.0

Dash (-) = No data reported.

^a All end-user sales not included in the other end-user categories shown, e.g., sales to agricultural customers or utilities.

Notes: The 4th quarter of 1993 was a transitional period between the predecessor EIA-782 survey system and the revised EIA-782 survey system. The revised survey system contains additional product and sales categories, which may not be consistent with categories derived from the predecessor survey system. Beginning January 1994 all data are from the revised survey system and are consistent.

Note: In January 2007, ultra low-sulfur diesel fuel was added.

Sources: Energy Information Administration Forms EIA-782A, "Refiners'/Gas Plant Operators' Monthly Petroleum Product Sales Report," and EIA-782B, "Resellers'/Retailers' Monthly Petroleum Product Sales Report."

Table 15. Prices of No. 2 Distillate to Residences by PAD District and Selected States^a
(Cents per Gallon Excluding Taxes)

Year Month	U.S. Average	PAD District I								
		Average	CT	ME	MA	NH	RI	VT	DE	DC
1983	107.8	109.0	109.1	102.8	109.1	104.1	110.5	112.9	106.0	117.0
1984	109.1	111.3	112.1	103.9	111.6	108.4	111.4	111.9	109.6	118.7
1985	105.3	106.8	108.0	99.7	107.0	102.4	106.7	107.7	104.6	114.3
1986	83.6	86.2	89.0	74.4	82.1	75.9	82.8	86.6	85.0	93.1
1987	80.3	81.4	83.4	74.7	80.6	76.5	82.5	81.1	79.3	91.8
1988	81.3	82.7	85.3	77.7	82.1	78.2	83.6	82.6	80.1	91.6
1989	90.0	91.7	92.9	89.4	92.6	89.3	93.9	90.5	88.2	98.6
1990	106.3	108.1	109.8	98.9	108.4	102.8	108.6	107.0	105.8	107.8
1991	101.9	104.1	106.2	96.0	103.0	91.6	99.9	101.9	99.7	112.2
1992	93.4	94.9	94.7	87.1	92.5	85.6	91.2	92.1	92.3	105.7
1993	91.1	92.1	91.9	82.6	89.7	82.8	89.3	90.4	89.9	104.5
1994	88.4	89.4	89.0	81.8	87.0	79.2	88.5	87.6	89.4	100.0
1995	86.7	87.5	86.4	78.7	84.4	77.9	87.4	85.3	87.0	101.0
1996	98.9	100.0	98.6	97.2	97.6	94.0	98.6	96.9	98.4	117.8
1997	98.4	99.3	96.3	94.2	96.0	94.2	98.9	98.7	98.4	117.4
1998	85.2	86.2	83.1	78.8	81.8	78.8	86.8	87.3	85.8	102.2
1999	87.6	88.0	85.2	81.3	83.6	77.0	85.8	85.4	88.4	101.1
2000	131.1	132.5	129.1	129.7	127.3	128.1	125.9	125.5	127.0	W
2001	125.0	126.0	123.9	121.7	122.1	125.6	123.6	126.1	123.4	143.1
2002	112.9	114.3	111.8	112.9	114.1	111.9	112.4	117.2	116.4	W
2003	135.5	137.2	135.5	131.4	138.6	131.2	134.4	130.9	143.3	W
2004	154.8	155.5	151.8	151.1	155.9	149.7	151.1	150.5	157.0	W
2005										
January	180.8	182.1	179.0	174.8	182.3	175.2	175.8	172.9	185.1	W
February	184.6	185.2	181.0	180.2	186.3	178.8	177.3	174.3	187.2	W
March	194.0	194.2	188.2	186.5	196.2	185.3	185.4	183.5	193.6	W
April	196.7	196.7	191.1	191.4	201.6	188.0	186.3	186.4	196.8	W
May	191.6	192.0	191.8	186.2	196.0	182.2	187.3	183.2	191.7	W
June	198.8	199.7	196.9	199.9	202.8	192.3	193.2	196.8	198.4	W
July	204.2	205.5	204.3	209.5	212.9	201.9	NA	210.2	207.0	W
August	218.4	218.4	221.9	218.4	223.2	212.7	219.3	220.3	216.9	W
September	242.3	241.5	237.6	235.8	237.1	234.8	237.6	235.5	246.3	W
October	244.3	241.7	237.6	234.2	241.3	233.8	239.6	235.7	246.9	W
November	232.1	231.8	228.5	223.5	231.5	222.2	230.9	227.8	231.6	W
December	231.2	232.2	228.7	222.0	231.1	221.3	232.7	228.3	235.8	W
2005	205.2	205.2	201.2	198.6	206.4	197.2	200.0	198.7	207.5	W
2006										
January	233.4	234.8	229.5	224.7	235.0	222.0	234.5	229.7	238.4	W
February	231.2	232.3	229.1	223.8	230.9	220.4	231.4	227.8	234.7	W
March	235.3	235.8	234.4	226.1	234.6	221.0	236.6	229.8	238.4	W
April	242.7	242.7	238.4	232.7	245.7	229.0	243.9	236.7	241.8	W
May	246.8	246.1	242.1	236.4	251.4	235.8	248.3	240.5	244.5	W
June	245.7	244.8	244.9	243.7	248.6	239.9	246.2	247.6	246.4	W
July	246.0	244.2	244.7	243.7	246.2	242.1	247.4	255.9	240.6	W
August	249.9	247.1	249.1	243.1	248.0	244.9	246.4	260.5	240.5	W
September	238.3	238.8	243.7	234.4	235.6	239.6	232.7	254.3	234.3	W
October	230.2	231.3	235.7	226.2	227.2	231.0	227.9	252.4	229.4	W
November	234.3	234.2	238.8	227.6	228.5	231.4	231.2	253.1	235.3	W
December	238.0	237.8	240.2	233.5	232.7	234.3	234.3	256.6	242.7	W
2006	236.5	236.8	235.7	229.4	235.5	228.3	236.0	240.8	238.1	W
2007										
January	231.1	231.9	238.4	229.5	227.7	234.5	226.9	252.6	234.6	W
February	239.1	240.3	242.4	234.7	237.0	232.6	236.7	257.5	247.7	W
March	244.9	245.3	246.3	239.7	242.5	242.3	242.5	259.3	249.6	W
April	248.0	247.8	249.8	243.7	245.6	244.4	247.6	260.6	246.6	W
May	248.0	248.0	250.5	241.7	245.8	242.5	247.2	257.1	245.6	W
June	249.2	249.4	251.8	241.3	246.2	239.7	247.6	253.1	NA	W
July	254.9	255.1	256.2	247.6	256.9	239.2	255.1	258.9	246.4	W
August	250.9	249.6	250.9	250.9	251.6	239.0	252.3	255.7	245.1	W
September	260.9	259.9	261.3	258.2	259.8	249.4	263.7	262.6	252.6	W
October	275.9	274.2	276.9	272.1	272.6	264.8	276.0	269.8	270.7	W
November	304.0	302.8	301.3	293.1	303.2	289.3	308.1	293.7	302.8	W
December	309.8	310.1	305.5	299.9	311.1	301.4	313.5	302.4	320.0	W
2007	259.2	259.3	261.5	254.0	257.6	253.5	260.2	267.9	258.4	W

See footnotes at end of table.

Table 15. Prices of No. 2 Distillate to Residences by PAD District and Selected States^a

(Cents per Gallon Excluding Taxes) — Continued

Year Month	PAD District I (Continued)						PAD District II			
	MD	NJ	NY	PA	VA	WV	Average	IL	IN	MI
1983	110.3	107.9	112.1	105.8	108.7	101.0	102.0	100.4	100.7	106.4
1984	113.5	111.0	115.5	107.9	110.5	102.1	101.7	100.1	103.1	105.0
1985	108.8	105.9	111.3	102.3	106.3	98.0	99.4	97.5	99.1	102.1
1986	91.4	90.2	91.1	81.4	86.6	74.6	72.7	NA	74.8	81.0
1987	86.6	84.3	85.2	76.9	79.5	76.4	74.8	79.8	75.4	77.5
1988	87.0	84.8	86.3	77.8	80.5	74.2	74.3	77.6	75.4	77.5
1989	93.8	91.8	95.8	85.1	87.0	83.0	81.9	80.9	83.2	85.3
1990	111.9	108.8	112.5	102.6	110.6	99.1	97.8	96.1	99.3	100.9
1991	108.4	104.0	111.3	99.7	101.1	93.4	90.8	92.7	91.8	94.2
1992	100.0	93.9	102.8	89.0	92.8	86.4	82.9	87.7	81.2	87.2
1993	98.1	92.4	100.1	86.3	89.3	85.6	83.3	84.4	81.0	87.2
1994	95.0	89.5	96.6	85.7	85.3	80.9	80.8	78.4	81.2	86.3
1995	93.6	88.8	95.5	82.6	84.4	81.5	80.9	78.5	81.6	86.0
1996	106.3	102.4	106.3	95.3	95.2	96.0	91.3	89.3	91.2	97.7
1997	105.7	103.3	106.5	95.0	94.8	96.2	91.0	87.0	86.5	94.2
1998	90.2	89.2	94.8	81.4	85.6	81.8	76.5	73.5	74.8	80.4
1999	90.7	91.3	96.9	81.5	87.0	78.9	82.3	71.6	79.3	88.3
2000	135.1	140.4	144.2	122.4	126.9	125.1	119.2	109.5	120.7	NA
2001	134.2	131.4	136.3	115.9	120.2	113.9	116.3	112.1	113.3	NA
2002	120.1	122.0	121.8	106.4	105.7	105.4	103.9	97.5	102.5	110.9
2003	145.5	148.9	143.6	130.4	131.1	130.4	122.9	119.8	120.2	132.1
2004	163.2	166.2	162.7	148.9	146.2	149.3	145.7	140.5	153.7	153.9
2005										
January	189.4	194.7	187.9	174.1	179.1	180.9	167.4	167.3	171.6	175.4
February	190.7	197.9	190.6	177.0	181.4	181.9	173.6	171.7	175.4	181.7
March	199.9	209.2	200.5	185.7	190.7	192.6	186.4	189.1	188.0	191.4
April	204.0	210.2	202.1	187.5	189.4	190.6	184.7	NA	190.7	192.1
May	195.5	203.3	199.9	182.9	182.3	185.5	180.8	183.4	179.8	191.2
June	199.7	206.9	208.6	191.4	188.1	188.4	187.4	183.4	190.0	197.3
July	207.4	214.6	210.6	196.2	195.1	196.7	193.5	195.2	200.9	201.6
August	222.6	225.6	220.7	210.7	216.7	210.8	212.1	207.8	217.0	216.9
September	248.9	252.7	246.9	237.0	247.3	237.5	239.5	235.9	241.9	247.6
October	250.8	254.7	243.6	232.6	252.6	243.4	NA	263.6	NA	NA
November	242.3	242.1	239.6	222.7	229.0	220.7	232.1	237.6	243.3	238.5
December	240.7	242.6	240.8	225.0	226.5	224.2	220.4	227.4	227.9	224.6
2005	212.7	216.6	210.5	197.4	204.4	204.3	200.0	202.1	201.7	205.3
2006										
January	243.1	247.1	242.6	226.7	233.9	227.1	217.2	221.5	222.4	222.7
February	243.0	243.6	240.5	223.5	230.6	224.4	217.7	221.2	221.7	224.0
March	242.8	247.0	243.3	227.0	231.6	226.5	223.7	225.2	228.0	229.1
April	248.5	254.6	250.9	233.5	233.7	233.4	235.9	237.3	238.1	241.6
May	224.5	256.4	258.0	236.7	237.2	233.9	244.4	246.7	246.4	249.4
June	214.3	257.9	253.8	238.7	232.4	230.3	246.7	250.3	249.5	249.6
July	218.7	255.7	256.7	234.8	232.4	235.0	257.0	251.2	256.9	258.0
August	222.3	261.7	258.7	239.6	232.6	241.9	266.1	262.8	264.9	265.9
September	246.9	249.0	248.7	227.8	219.8	220.2	229.6	230.8	227.5	234.6
October	237.8	237.3	241.2	222.3	213.0	215.7	223.0	227.6	227.2	228.7
November	242.0	238.8	243.8	228.0	214.1	220.9	228.9	233.2	232.8	235.5
December	244.9	247.7	247.2	231.0	215.5	223.4	230.5	236.8	236.4	238.4
2006	239.8	246.7	245.8	228.6	226.8	226.1	228.6	231.2	231.7	232.9
2007										
January	240.3	236.2	238.6	224.7	211.4	212.9	215.9	221.7	218.2	221.1
February	246.9	247.2	249.7	234.7	214.1	223.3	223.6	222.3	228.4	227.2
March	251.3	253.2	251.6	237.0	226.8	229.9	237.9	236.4	242.6	247.3
April	251.7	256.1	254.8	239.0	224.4	229.2	248.3	246.8	255.5	258.4
May	256.2	256.6	257.1	241.7	223.8	228.3	245.7	239.7	246.0	247.6
June	255.4	253.8	263.1	241.5	232.7	236.2	249.0	243.3	246.7	245.6
July	258.7	258.6	269.1	242.8	236.6	241.2	255.9	252.0	255.2	254.2
August	258.8	258.2	260.5	238.1	236.2	240.9	260.5	256.2	258.5	257.3
September	266.1	267.8	269.6	249.4	245.6	253.5	269.0	258.9	263.7	266.8
October	283.0	281.2	282.8	261.6	266.3	266.7	279.7	275.0	280.8	280.1
November	312.4	316.8	309.1	294.6	295.5	300.3	309.5	307.5	313.3	310.3
December	322.1	326.1	315.5	300.9	300.2	306.2	305.0	303.9	309.6	304.0
2007	266.8	266.4	267.4	250.8	240.7	247.8	255.3	252.8	255.7	258.8

See footnotes at end of table.

Table 15. Prices of No. 2 Distillate to Residences by PAD District and Selected States^a

(Cents per Gallon Excluding Taxes) — Continued

Year Month	PAD District II (Continued)			PAD District III Average	PAD District IV		PAD District V			
	MN	OH	WI		Average	ID	Average	AK	OR	WA
1983	103.1	101.3	101.2	87.4	94.2	101.8	106.4	108.8	103.6	109.0
1984	104.1	102.1	101.0	97.9	96.8	98.5	101.5	106.9	99.3	102.6
1985	101.9	99.7	98.3	92.5	96.1	97.2	100.9	108.3	97.1	101.1
1986	79.2	77.7	75.6	67.4	70.6	73.8	78.1	94.9	70.4	77.5
1987	74.6	74.7	75.1	63.7	69.6	68.8	77.8	86.5	72.5	79.5
1988	73.5	74.7	73.9	62.8	69.1	68.8	76.9	86.9	70.9	78.5
1989	82.4	81.6	81.1	70.7	78.6	77.8	86.6	96.4	80.2	87.4
1990	101.4	98.1	94.2	85.5	97.0	97.4	102.6	110.1	97.0	102.9
1991	91.1	91.0	89.5	78.7	92.4	95.1	99.8	105.0	93.3	101.6
1992	82.6	83.6	81.6	71.3	84.8	85.7	92.1	94.1	87.6	94.0
1993	83.2	84.0	82.3	75.4	86.0	86.2	96.8	96.1	91.8	99.9
1994	80.6	81.2	81.1	71.4	78.6	78.9	90.9	86.5	88.7	95.0
1995	80.1	80.8	81.2	69.0	84.4	83.9	90.6	83.4	89.4	96.2
1996	90.9	92.1	89.9	77.5	94.2	93.3	99.9	90.9	98.9	108.0
1997	89.9	91.3	93.3	73.8	93.7	95.3	106.0	97.3	103.1	113.9
1998	73.8	76.7	80.1	59.1	77.6	78.4	91.4	85.2	86.1	97.8
1999	77.4	82.0	84.7	64.8	80.6	76.2	100.5	96.6	93.8	106.5
2000	115.6	122.0	117.1	111.4	116.4	117.0	139.3	133.7	136.8	144.5
2001	112.2	116.0	118.0	94.3	108.1	103.8	130.8	137.7	121.1	133.6
2002	105.1	105.8	107.3	84.8	90.9	91.9	113.2	108.7	106.0	120.4
2003	121.8	128.4	126.9	W	119.6	118.8	136.3	124.3	130.3	148.7
2004	143.3	147.5	146.5	W	139.7	149.5	165.8	152.4	159.4	174.9
2005										
January	162.9	169.3	167.1	W	151.2	149.0	179.5	168.3	168.4	192.5
February	168.1	176.1	172.2	W	182.3	188.7	197.1	176.7	196.1	223.4
March	179.7	188.9	186.6	W	198.4	204.6	215.0	192.4	211.0	243.6
April	182.9	181.0	186.9	W	200.2	205.5	222.9	204.3	220.6	248.0
May	180.2	175.5	185.7	W	183.5	185.7	206.0	201.3	201.6	230.2
June	187.7	187.7	190.4	W	188.3	193.8	202.8	199.9	200.1	221.6
July	194.4	193.9	198.4	W	198.4	211.5	207.8	202.5	NA	NA
August	216.1	212.1	215.1	W	226.4	249.9	236.3	218.0	NA	261.8
September	239.5	241.5	239.3	W	260.3	276.1	259.1	242.5	259.0	280.6
October	255.6	255.0	NA	W	262.2	NA	264.0	250.1	NA	283.0
November	224.7	230.3	236.9	W	242.0	253.3	239.8	229.7	234.8	261.3
December	212.6	220.1	224.0	W	213.6	218.2	230.1	219.5	219.7	248.2
2005	198.7	200.9	199.3	W	209.5	212.3	218.5	206.1	214.6	238.5
2006										
January	210.5	219.0	219.2	W	211.1	217.9	232.0	218.3	220.4	249.6
February	212.2	219.1	219.1	W	219.8	222.4	235.5	223.0	218.3	253.7
March	219.7	224.9	224.8	W	225.7	228.1	249.4	224.9	237.6	272.8
April	230.6	237.2	237.3	W	238.1	242.2	258.3	234.1	251.9	276.5
May	241.8	240.8	246.7	W	258.9	270.1	274.3	260.4	272.5	298.7
June	251.4	239.7	246.7	W	259.3	267.4	264.4	261.0	NA	291.4
July	265.3	240.9	258.2	W	256.1	266.2	259.9	258.1	262.2	287.2
August	276.7	248.0	268.8	W	284.3	297.4	270.9	266.3	282.1	293.0
September	232.9	222.8	232.9	W	250.3	269.7	253.4	261.3	239.3	274.0
October	221.8	217.3	226.1	W	228.1	235.8	233.9	228.1	225.1	248.0
November	229.7	219.9	232.1	W	237.4	243.2	251.5	224.2	254.9	270.3
December	228.2	222.0	235.0	W	249.3	257.9	263.6	235.7	259.3	284.6
2006	226.8	224.4	229.7	W	237.4	239.1	249.8	239.5	241.1	268.1
2007										
January	216.9	209.2	219.9	W	224.8	228.4	248.3	226.0	230.9	262.7
February	224.8	221.6	224.0	W	222.1	224.9	244.4	220.9	224.3	262.7
March	241.5	231.8	239.1	W	239.3	241.7	245.8	224.0	228.2	270.0
April	251.7	236.4	254.2	NA	262.1	254.1	251.7	238.1	231.5	281.2
May	251.9	230.0	249.5	W	254.8	NA	252.7	244.9	237.4	282.4
June	249.9	238.2	251.7	W	245.5	253.0	247.0	247.7	NA	274.4
July	258.6	244.1	254.8	NA	253.0	257.9	250.4	252.7	NA	275.3
August	262.6	247.7	261.7	NA	253.3	257.3	254.6	256.3	NA	276.2
September	273.4	257.3	271.8	NA	266.3	263.6	261.6	255.8	250.7	284.6
October	282.6	273.5	281.4	W	288.8	287.0	300.9	276.3	298.0	321.5
November	305.0	308.7	310.3	W	317.3	321.3	327.1	303.2	319.5	345.9
December	296.4	307.0	306.9	W	307.2	302.5	319.1	301.1	304.5	335.7
2007	258.7	249.4	257.1	W	259.1	259.8	268.1	251.8	250.0	290.9

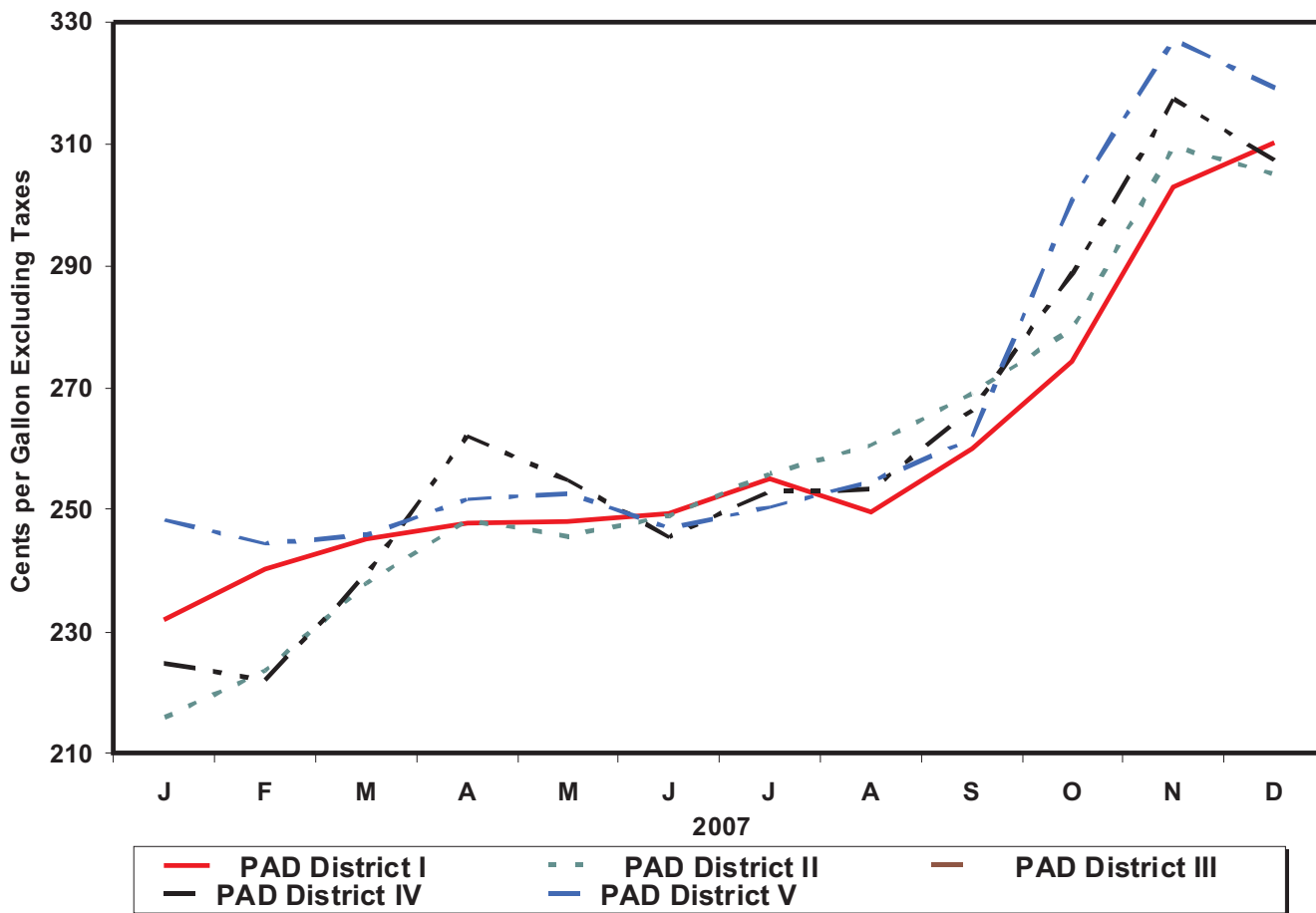
NA = Not available.

W = Withheld to avoid disclosure of individual company data.

^a Some State data are not sufficient for publication individually, but are used in calculating the U.S. and the PAD District averages.

Sources: Energy Information Administration Forms EIA-782A, "Refiners/Gas Plant Operators' Monthly Petroleum Product Sales Report," and EIA-782B, "Resellers/Retailers' Monthly Petroleum Product Sales Report," January 1983 forward.

Figure 6. U.S. No. 2 Distillate Prices to Residences by PAD District



Source: Energy Information Administration, Form EIA-782A, "Refiners' /Gas Plant Operators' Monthly Petroleum Product Sales Report" and Form EIA-782B, "Resellers' /Retailers' Monthly Petroleum Product Sales Report."

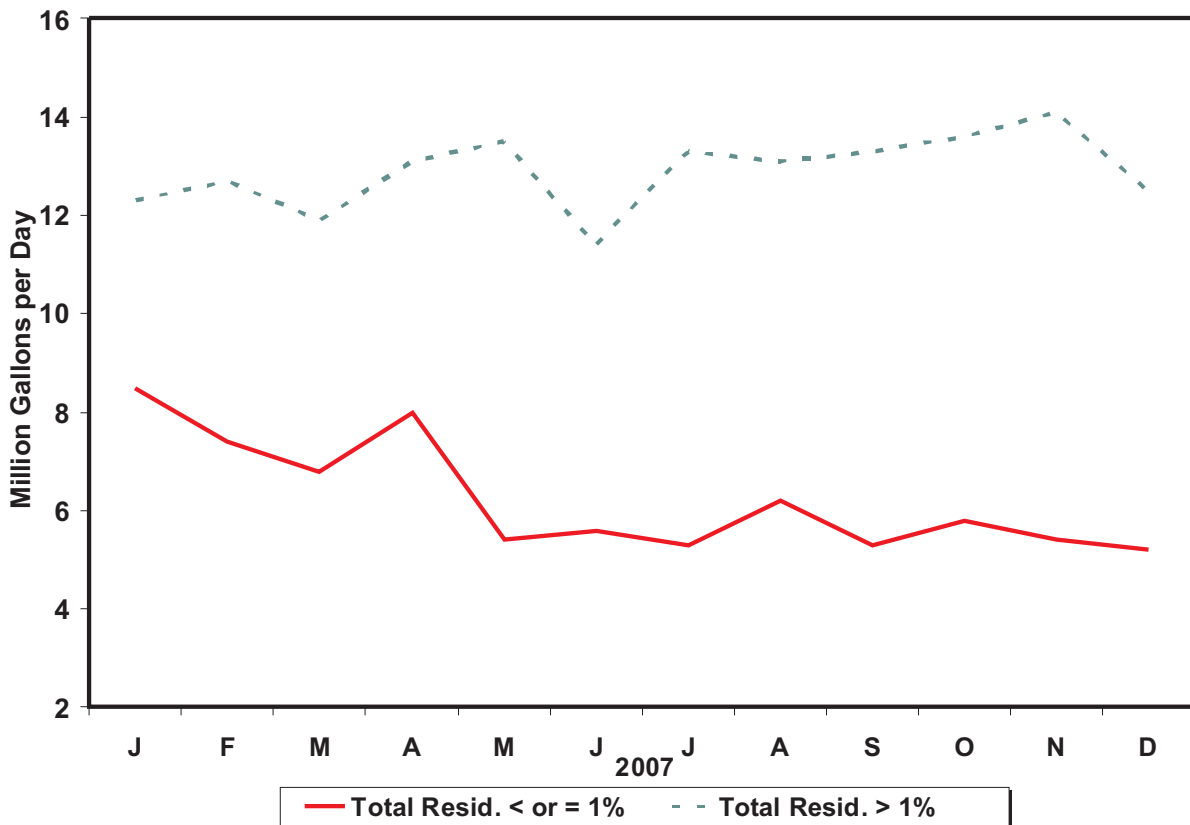
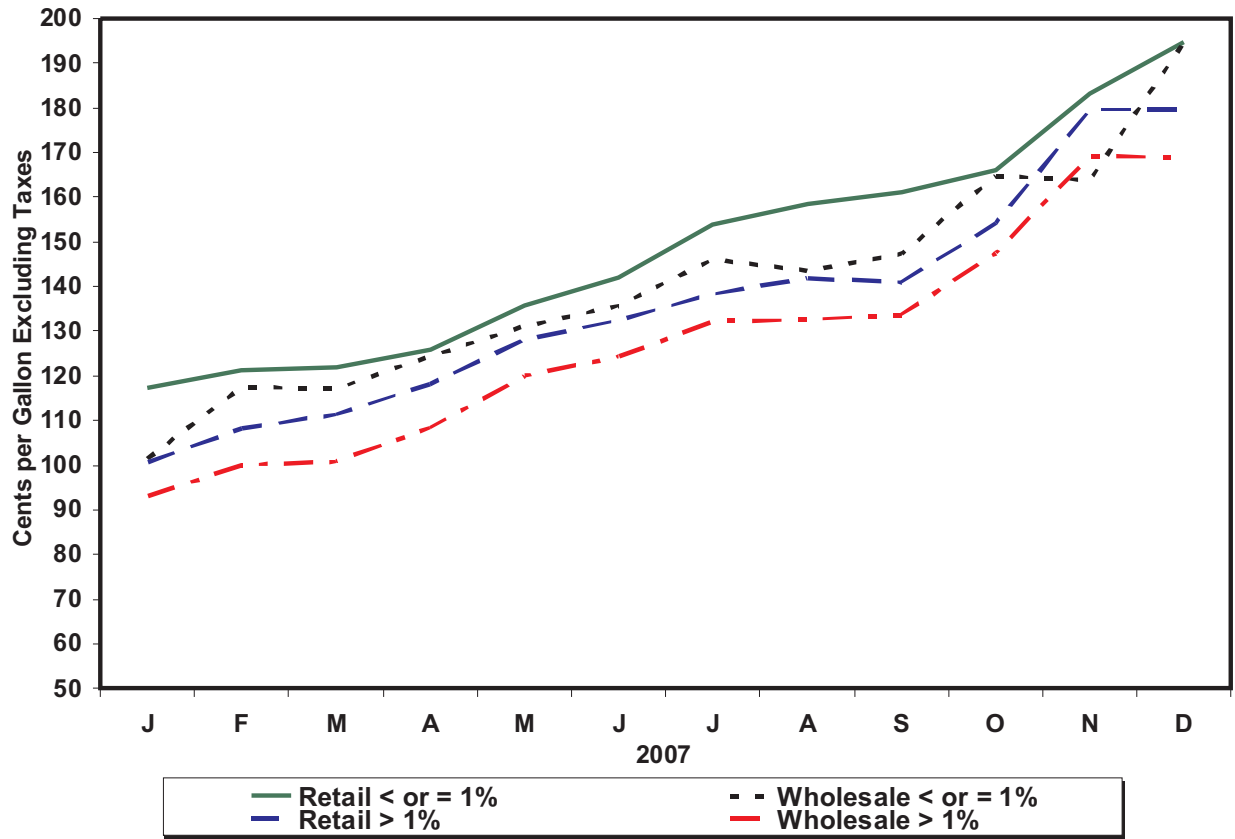
Table 16. U.S. Refiner Residual Fuel Oil Prices
(Cents per Gallon Excluding Taxes)

Year Month	Sulfur Less Than or Equal to 1 Percent		Sulfur Greater Than 1 Percent		Average	
	Sales to End Users	Sales for Resale	Sales to End Users	Sales for Resale	Sales to End Users	Sales for Resale
1978	31.4	29.3	27.5	24.5	29.8	26.3
1979	46.8	45.0	38.9	36.6	43.6	39.9
1980	67.5	60.8	52.3	47.9	60.7	52.8
1981	82.9	74.8	67.3	62.2	75.6	66.3
1982	74.7	69.5	61.1	57.2	67.6	61.2
1983	69.5	64.3	61.1	59.1	65.1	60.9
1984	72.0	68.5	65.9	63.9	68.7	65.4
1985	64.4	61.0	58.2	56.0	61.0	57.7
1986	37.2	32.8	31.7	28.9	34.3	30.5
1987	44.7	41.2	39.6	36.2	42.3	38.5
1988	37.2	33.3	30.0	27.1	33.4	30.0
1989	43.6	40.7	34.4	33.1	38.5	36.0
1990	50.5	47.2	40.0	37.2	44.4	41.3
1991	40.2	36.4	30.6	29.2	34.0	31.4
1992	38.9	35.1	31.2	28.6	33.6	30.8
1993	39.7	33.7	30.3	25.6	33.7	29.3
1994	40.1	34.5	33.0	28.7	35.2	31.7
1995	43.6	38.3	37.7	33.8	39.2	36.3
1996	52.6	45.6	43.3	38.9	45.5	42.0
1997	48.8	41.5	40.3	36.6	42.3	38.7
1998	35.4	29.9	28.7	26.9	30.5	28.0
1999	40.5	38.2	36.2	32.9	37.4	35.4
2000	70.8	62.7	56.6	51.2	60.2	56.6
2001	64.2	52.3	49.2	42.8	53.1	47.6
2002	64.0	54.6	54.4	50.8	56.9	53.0
2003	80.4	72.8	65.1	58.8	69.8	66.1
2004	83.5	76.4	69.2	60.1	73.9	68.1
2005						
January	86.9	81.8	70.9	NA	77.2	72.1
February	90.8	87.9	75.3	NA	80.7	72.2
March	98.0	96.5	82.8	NA	89.8	82.9
April	106.6	103.4	93.3	80.1	97.8	89.6
May	112.2	95.0	98.4	86.6	103.1	89.1
June	111.8	100.3	96.2	84.4	101.9	90.5
July	116.8	113.8	97.3	87.8	105.1	101.1
August	129.2	133.1	100.0	90.7	110.6	115.1
September	138.4	140.2	115.8	103.6	125.2	121.9
October	142.7	139.6	119.8	108.8	127.9	124.7
November	134.3	126.5	111.7	99.3	120.4	111.4
December	134.6	129.3	109.6	105.7	119.5	119.6
2005	116.8	111.5	97.4	84.2	104.8	97.1
2006						
January	134.6	125.8	117.6	110.2	123.9	118.2
February	137.8	122.2	119.4	115.3	125.2	119.4
March	136.0	121.8	119.3	116.0	125.0	119.2
April	139.7	120.2	123.5	115.8	127.5	118.0
May	143.5	125.9	127.9	122.1	131.7	124.3
June	148.1	125.3	123.2	113.6	128.6	116.9
July	145.1	128.4	123.3	115.8	127.8	119.5
August	145.1	130.9	125.5	119.2	130.3	124.6
September	132.4	111.8	111.8	104.1	116.0	107.3
October	120.1	107.7	105.9	98.5	109.3	102.5
November	117.6	115.9	105.3	95.9	108.7	102.5
December	119.9	113.3	105.3	96.3	109.9	104.3
2006	134.2	120.2	117.3	108.5	121.8	113.6
2007						
January	117.2	101.5	100.6	93.0	105.8	97.6
February	121.4	117.2	108.2	100.0	112.6	107.3
March	122.1	117.1	111.4	100.8	115.0	107.6
April	125.8	124.4	118.2	108.4	120.9	115.0
May	135.9	131.1	128.1	120.0	130.0	123.8
June	142.1	135.7	132.5	124.3	135.7	128.0
July	153.9	146.1	138.3	132.1	141.5	137.8
August	158.4	143.6	141.9	132.6	146.2	136.7
September	161.0	147.4	141.0	133.7	145.0	139.3
October	166.1	164.7	154.2	147.5	157.3	153.6
November	183.2	183.9	179.6	169.2	180.3	174.2
December	194.8	194.8	179.7	169.0	184.2	176.5
2007	143.6	140.6	135.0	131.4	137.4	135.0

NA = Not available.

Sources: Energy Information Administration Form EIA-782A, "Refiners'/Gas Plant Operators' Monthly Petroleum Product Sales Report," January 1983 forward; Form EIA-460, "Petroleum Industry Monthly Report for Product Prices," source for backcast estimates prior to January 1983.

Figure 7. U.S. Refiner Residual Fuel Oil Prices and Volumes



Source: Energy Information Administration, Form EIA-782A, "Refiners' /Gas Plant Operators' Monthly Petroleum Product Sales Report."

Table 17. U.S. Refiner Residual Fuel Oil Volumes
(Million Gallons per Day)

Year Month	Sulfur Less Than or Equal to 1 Percent		Sulfur Greater Than 1 Percent		Total	
	Sales to End Users	Sales for Resale	Sales to End Users	Sales for Resale	Sales to End Users	Sales for Resale
1983	13.4	7.2	14.9	12.9	28.3	20.2
1984	15.1	6.7	17.8	14.6	32.9	21.3
1985	11.4	7.0	13.8	12.9	25.2	19.9
1986	15.2	7.9	16.4	10.7	31.6	18.6
1987	15.1	7.8	13.9	9.1	29.0	16.9
1988	14.2	8.7	15.9	10.3	30.2	18.9
1989	13.4	7.9	17.0	13.1	30.4	21.0
1990	11.1	7.4	14.9	10.5	25.9	17.9
1991	8.6	5.6	15.5	12.2	24.0	17.8
1992	7.1	5.2	15.3	10.0	22.4	15.2
1993	6.2	5.7	11.1	6.9	17.2	12.6
1994	4.2	6.6	9.3	6.2	13.5	12.8
1995	2.9	7.7	8.7	5.9	11.6	13.6
1996	3.1	6.3	9.8	7.4	12.9	13.8
1997	3.2	4.8	10.3	6.7	13.4	11.5
1998	3.9	5.7	10.5	9.6	14.4	15.4
1999	3.9	5.3	10.0	6.2	13.9	11.5
2000	3.3	4.9	9.8	5.6	13.1	10.5
2001	3.8	5.2	11.0	5.1	14.8	10.3
2002	2.7	5.1	7.8	3.7	10.4	8.8
2003	3.3	3.5	7.4	3.2	10.7	6.7
2004	3.4	2.9	6.8	3.0	10.2	5.9
2005						
January	4.6	2.7	7.1	NA	11.7	5.3
February	4.2	2.9	7.8	NA	11.9	7.0
March	4.8	2.6	5.6	NA	10.4	4.9
April	3.1	1.6	6.1	2.4	9.2	4.0
May	2.9	1.2	5.6	2.7	8.5	3.9
June	3.6	2.5	6.2	4.1	9.8	6.6
July	3.7	2.2	5.6	2.1	9.4	4.4
August	3.9	2.0	6.8	1.4	10.7	3.4
September	4.3	1.8	6.1	1.7	10.4	3.5
October	3.6	2.0	6.5	1.8	10.1	3.8
November	4.4	1.9	7.0	2.4	11.4	4.3
December	4.5	3.5	6.8	2.4	11.4	5.9
2005	4.0	2.2	6.4	2.5	10.4	4.7
2006						
January	3.9	2.1	6.7	2.0	10.6	4.1
February	3.5	2.5	7.5	1.7	11.0	4.1
March	3.5	2.4	6.7	1.9	10.2	4.3
April	2.5	2.3	7.6	2.4	10.1	4.7
May	2.3	3.2	7.1	2.4	9.4	5.6
June	2.2	1.7	7.7	4.4	9.9	6.1
July	2.0	2.2	7.9	5.1	10.0	7.2
August	2.6	3.9	8.2	4.6	10.8	8.5
September	2.2	3.5	8.4	5.1	10.6	8.6
October	2.6	2.9	8.2	3.7	10.8	6.6
November	3.0	2.4	8.0	4.9	11.1	7.3
December	3.1	4.8	6.8	5.4	10.0	10.2
2006	2.8	2.8	7.6	3.6	10.4	6.5
2007						
January	3.8	4.7	8.4	3.9	12.2	8.5
February	4.3	3.1	8.5	4.2	12.8	7.3
March	3.8	3.0	7.7	4.2	11.5	7.3
April	4.6	3.4	8.4	4.7	13.0	8.0
May	2.7	2.7	8.3	5.2	11.0	7.9
June	3.4	2.2	6.9	4.5	10.3	6.7
July	2.3	3.0	8.9	4.4	11.2	7.5
August	2.6	3.6	7.2	5.9	9.7	9.5
September	2.1	3.2	8.6	4.7	10.7	7.9
October	2.6	3.2	7.6	6.0	10.2	9.2
November	2.0	3.4	7.5	6.6	9.6	10.1
December	2.7	2.5	6.3	6.2	9.1	8.7
2007	3.1	3.2	7.8	5.0	10.9	8.2

NA = Not available.

Note: Totals may not equal the sum of the components due to rounding.

Source: Energy Information Administration Form EIA-782A, "Refiners'/Gas Plant Operators' Monthly Petroleum Product Sales Report."