

Office of Basic Energy Sciences

Harriet Kung, Director
Wanda Smith, Administrative Specialist

BES Budget and Planning

Bob Astheimer, Technical Advisor
Margie Davis, Financial Management
Vacant, Program Support Specialist

BES Operations

Rich Burrow, DOE Technical Office Coordination
Don Freeburn, DOE and Stakeholder Interactions
Ken Rivera, Laboratory Infrastructure/ES&H
Vacant, Program Analyst/BESAC

Materials Sciences and Engineering Division

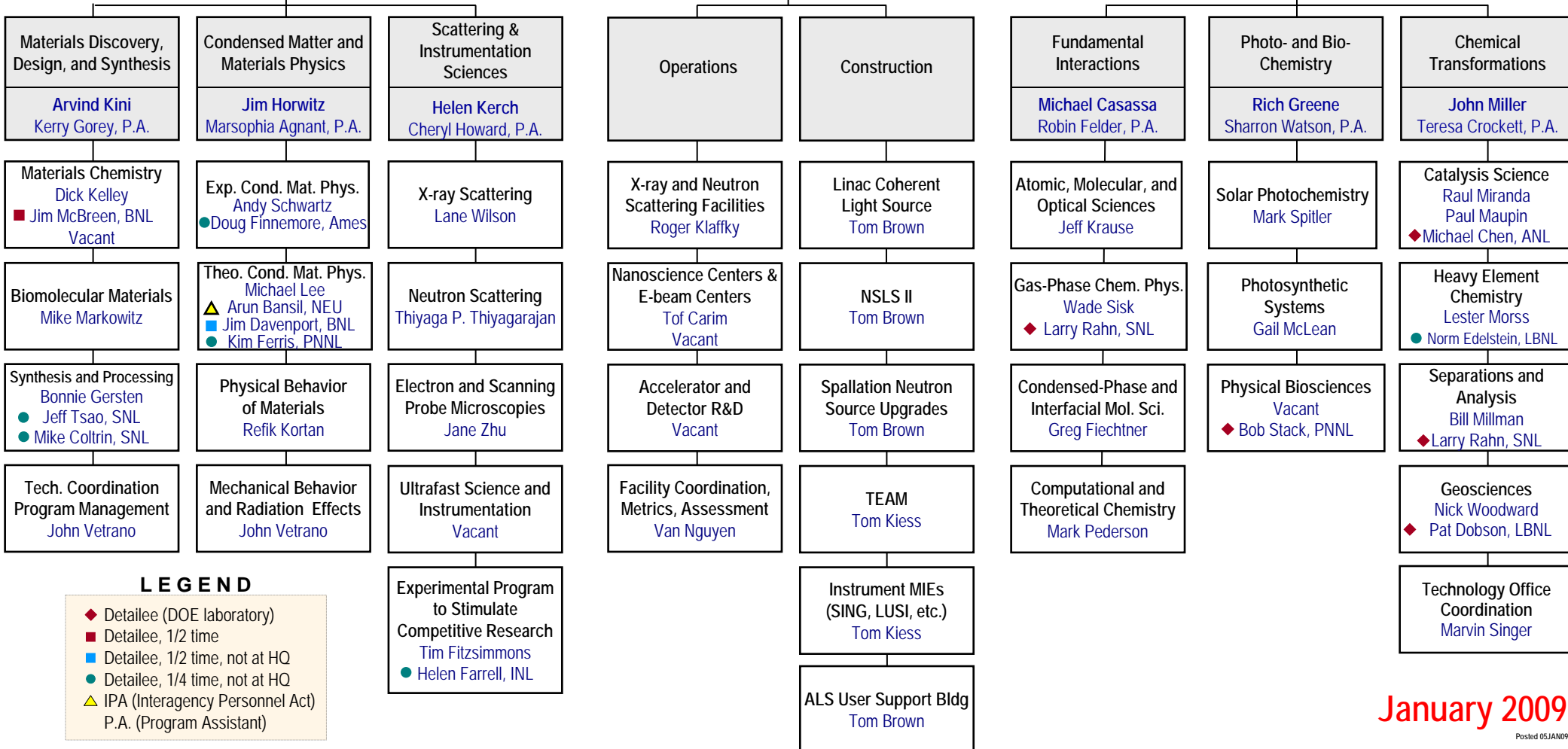
Jim Horwitz, Acting Director
Christie Ashton, Program Analyst
Charnice Waters, Secretary

Scientific User Facilities Division

Pedro Montano, Director
Linda Cerrone, Program Support Specialist
Rocio Meneses, Program Assistant

Chemical Sciences, Geosciences, and Biosciences Division

Eric Rohlfig, Director
Diane Marceau, Program Analyst
Michaelene Kyler-King, Program Assistant



LEGEND

- ◆ Detailee (DOE laboratory)
- Detailee, 1/2 time
- Detailee, 1/2 time, not at HQ
- Detailee, 1/4 time, not at HQ
- ▲ IPA (Interagency Personnel Act)
- P.A. (Program Assistant)

January 2009

Posted 05JAN09