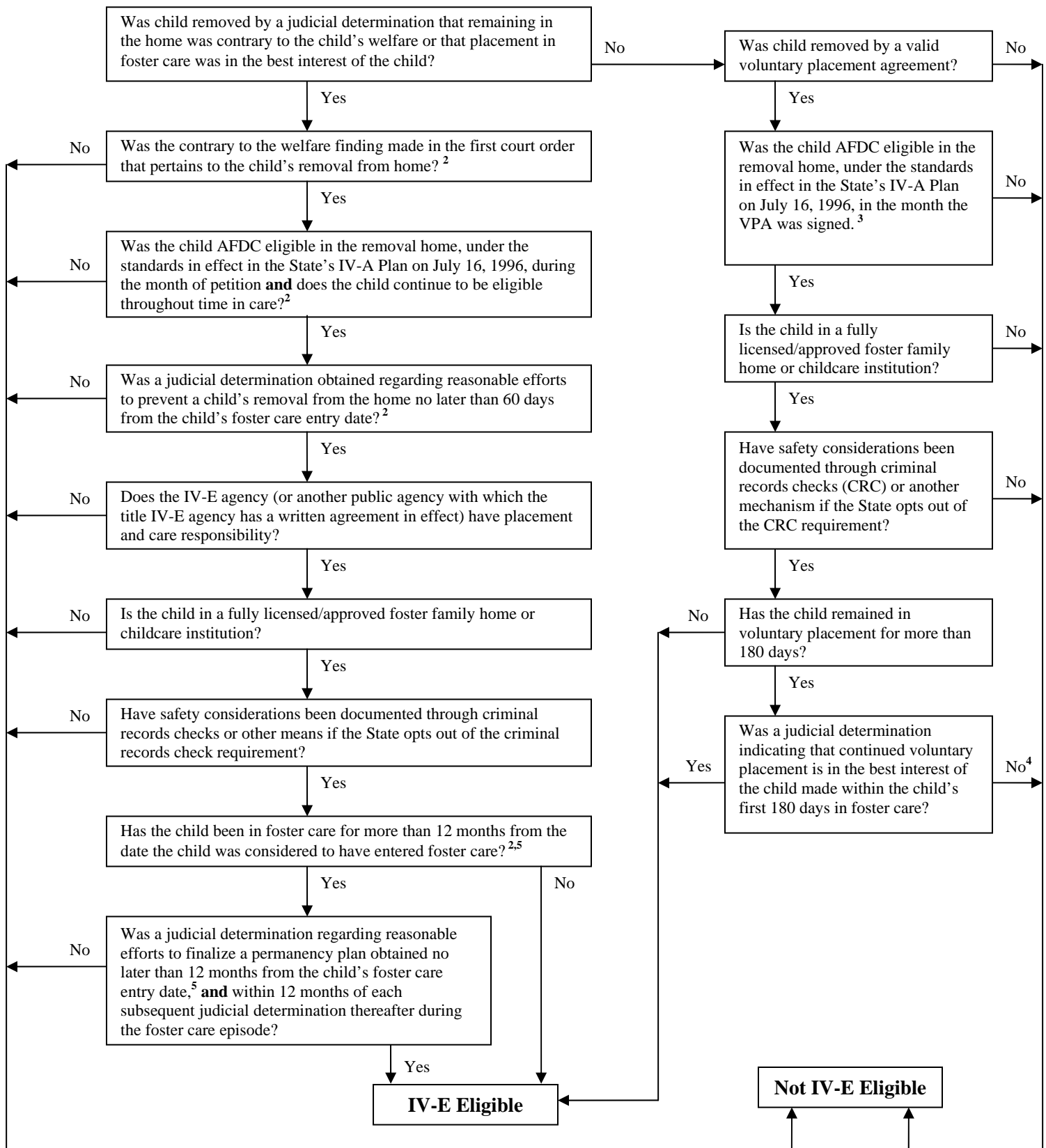


Appendix XI

Title IV-E Foster Care Eligibility Chart



¹ Title IV-E foster care eligibility requirements have changed over time. This chart will be accurate and most useful for cases to which the current regulations, which took effect March 27, 2000, apply.

² For children who entered care on or after March 27, 2000, apply.

³ The AFDC home may be different for States under the jurisdiction of the Ninth Circuit Court.

⁴ If *No*, the child is eligible for title IV-E payments made in the first 180 days; eligibility ends on the 181st day in foster care.

⁵ The date that a child is considered to have entered foster care is the earlier of a judicial finding of abuse or neglect or 60 days from the date the child is removed from the home.