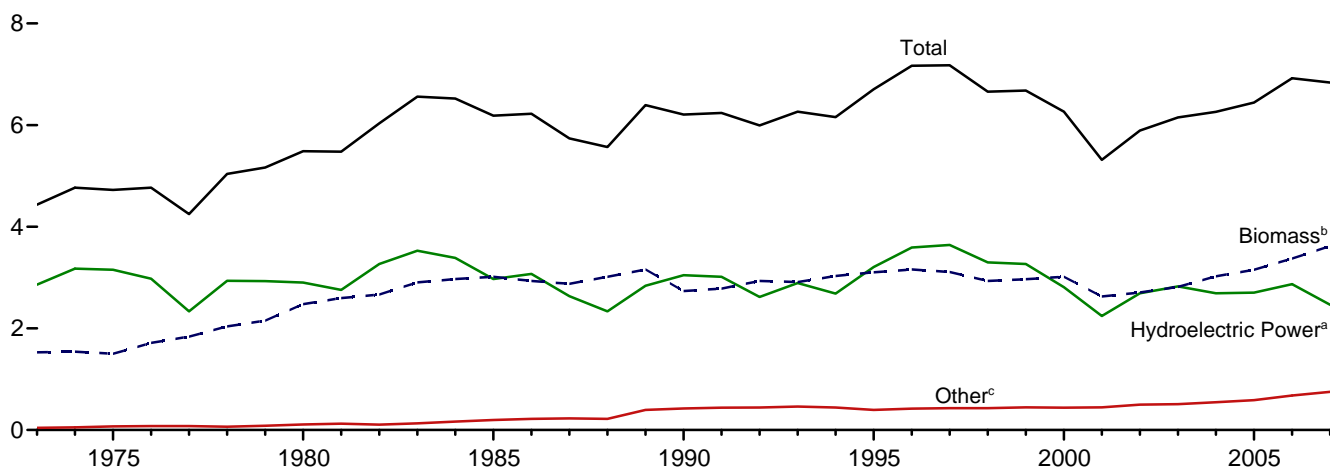
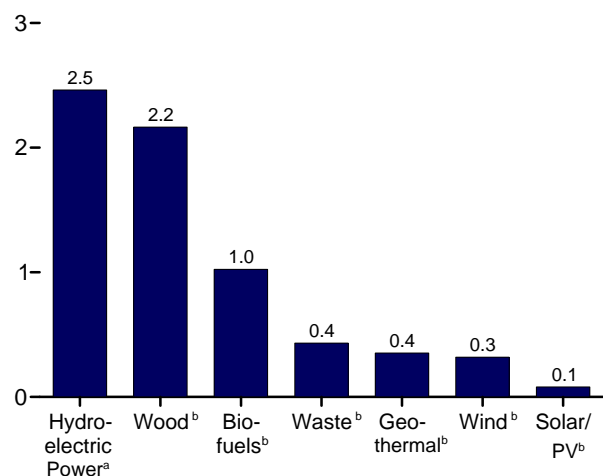


Figure 10.1 Renewable Energy Consumption
(Quadrillion Btu)

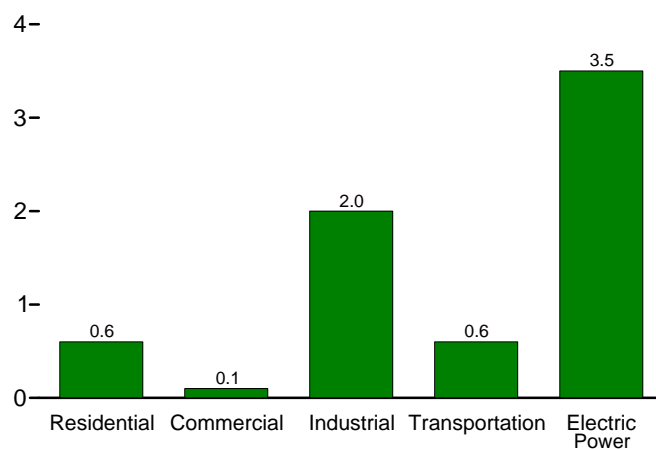
Total and Major Sources, 1973-2007



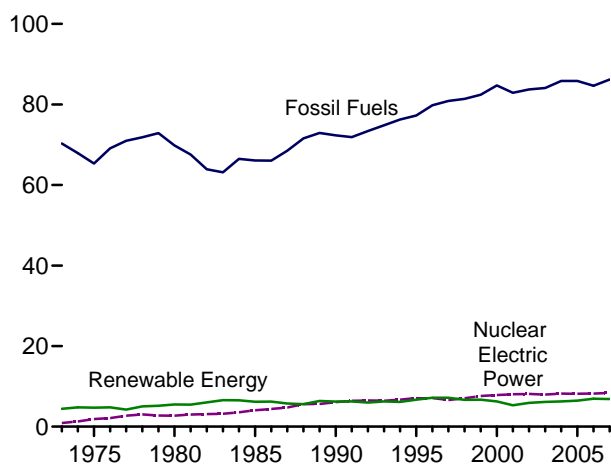
By Source, 2007



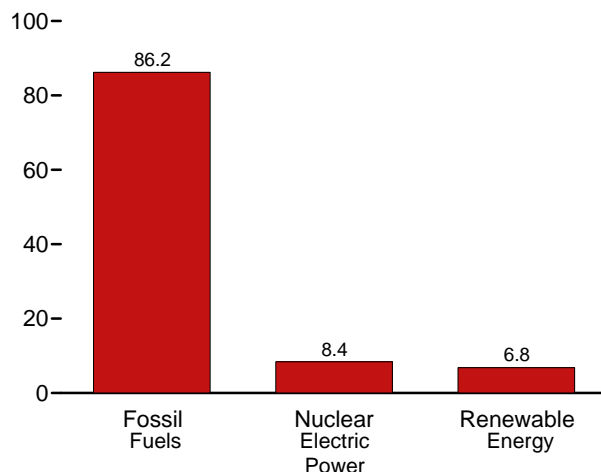
By Sector, 2007



Compared With Other Resources, 1973-2007



Compared With Other Resources, 2007



^aConventional hydroelectric power.

^bSee Table 10.1 for definition.

^cGeothermal, solar/PV, and wind.

Web Page: <http://www.eia.doe.gov/emeu/mer/renew.html>.

Sources: Tables 1.3, 10.1, and 10.2a-c.