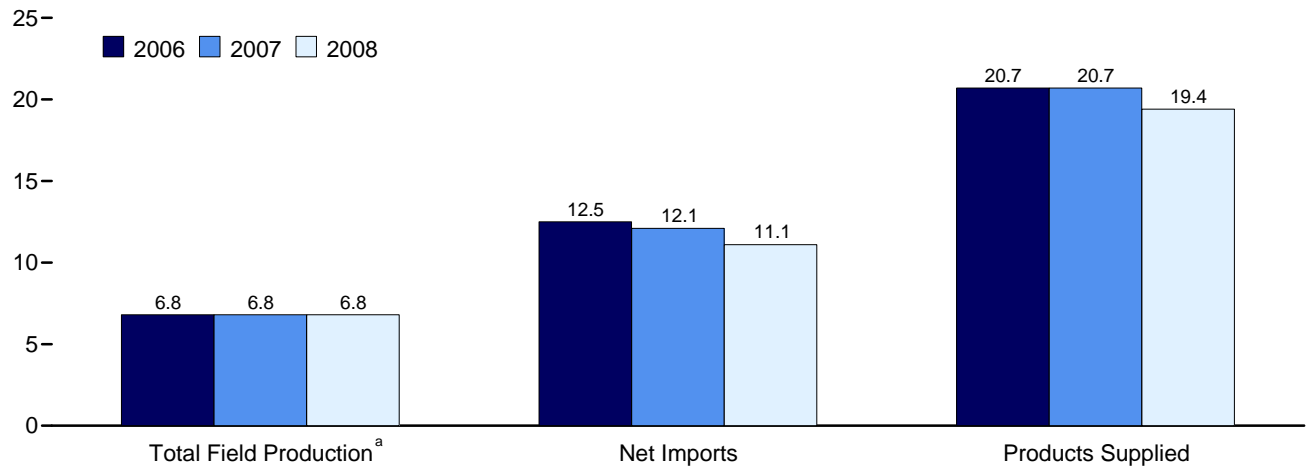
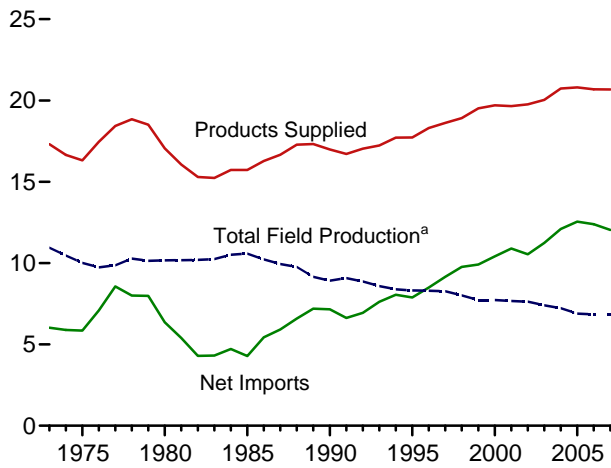


**Figure 3.1 Petroleum Overview**  
(Million Barrels per Day)

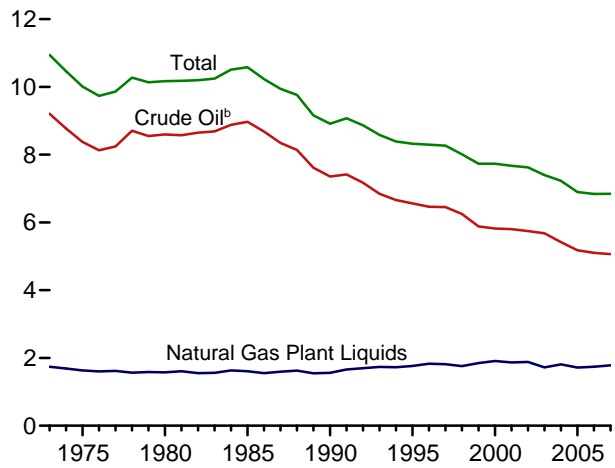
Overview, January-November



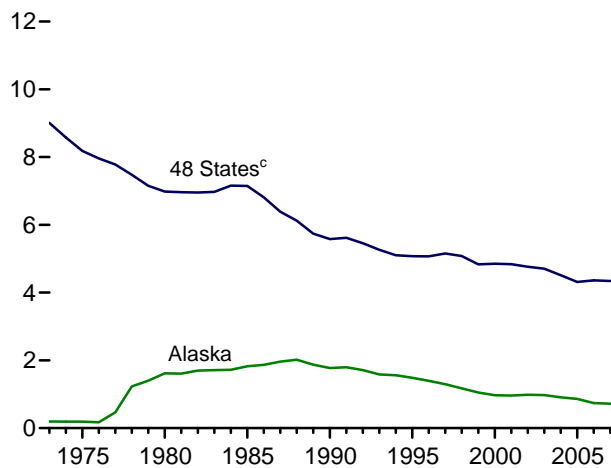
Overview, 1973-2007



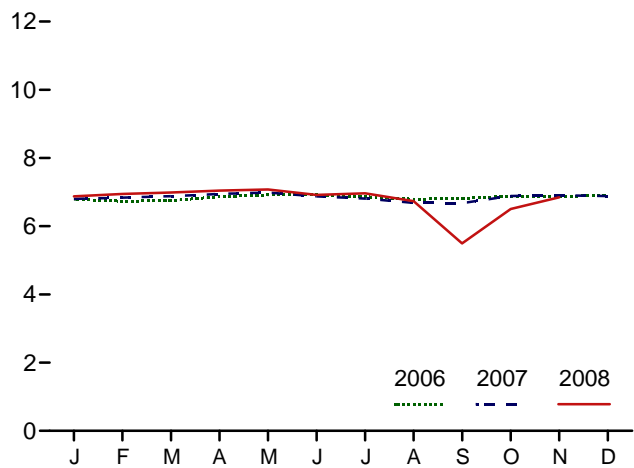
Total Field Production, 1973-2007



Crude Oil<sup>b</sup> Field Production, 1973-2007



Total Field Production<sup>a</sup>, Monthly



<sup>a</sup>Crude oil, including lease condensate, and natural gas plant liquids field production.

<sup>b</sup>Includes lease condensate.

<sup>c</sup>United States excluding Alaska and Hawaii.

Note: Because vertical scales differ, graphs should not be compared.  
Web Page: <http://www.eia.doe.gov/emeu/mer/petro.html>.  
Source: Table 3.1.