

## The National Wildlife Program of the Forest Service

Covering 192 million acres of public land, the national forests and grasslands provide habitat for over 3,000 vertebrate and innumerable invertebrate species. From the glaciers of Alaska to the towering saguaros of Arizona, from the bottomland hardwoods of Mississippi to the alpine meadows of New Hampshire, the Forest Service takes seriously its responsibility to manage habitats in a manner that maintains a natural diversity of native and desirable nonnative wildlife species. Sound science and partnerships are the cornerstones of the Forest Service wildlife program.



© Pete Benegayfield

### Partnerships

Partners play an integral role in helping the Forest Service achieve its goals for wildlife conservation. We work with communities and partners on shared national visions. Partners bring ideas, sweat-equity, funding, and expertise to on-the-ground projects. Partners bring important conservation issues to the attention of the Washington Office staff.

### Get Wild!

Get Wild! is the umbrella slogan for the Forest Service's terrestrial wildlife program, under which we: administer wildlife management activities; protect and restore native habitats important for conserving biodiversity; and manage habitats to meet public demand for hunting and wildlife viewing and appreciation. The Forest Service maintains a well-trained workforce and effective organizational structure for applying best science and management in meeting the wildlife-related goals of the agency.



© Henry Zeman/National Wild Turkey Federation

The following national emphasis areas are included under the Get Wild! umbrella:



**Making Tracks** is a Forest Service partnership program with the National Wild Turkey Federation, State wildlife agencies, conservation groups, and individuals. Its goal is to emphasize wild turkey management on the national forests.



**Partners in Flight** emphasizes conservation of neotropical migrants and other landbirds with the goal of keeping common birds common. Public and private resources are combined, coordinated, and increased to conserve bird populations in this hemisphere.



**Eyes on Wildlife** is part of the Forest Service's NatureWatch Program, and provides nature viewing opportunities, encourages safe and sound viewing ethics, and contributes to local economies.



**Elk Country** helps ensure a future for wild, free-ranging elk on public lands through partnerships with the Rocky Mountain Elk Foundation, State agencies, and others.



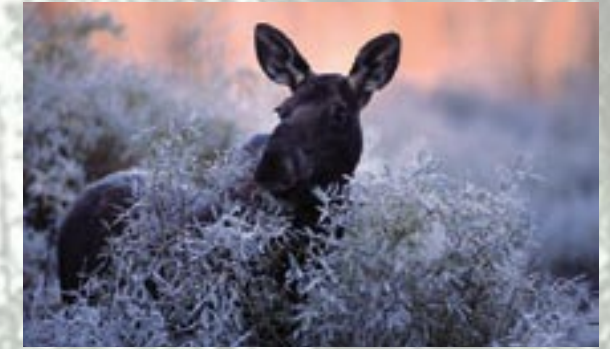
**Animal Inn** is an information and education program that focuses on the value of dead, dying, and hollow trees for wildlife.



**Taking Wing** is the Forest Service program to enhance waterfowl habitat management in partnership with Ducks Unlimited and other partners.



© 2004 John White



© 2004 Microsoft Corporation

**Full Curl** focuses on the enhancement and restoration of quality wild sheep habitat to increase populations for viewing and hunting in partnership with the Foundation for North American Wild Sheep and others.

**A Million Bucks** works through the Mule Deer Foundation and others to manage deer habitat to meet the demand for recreational opportunities.

**Dancers in the Forest** is a partnership with the Ruffed Grouse Society aimed at improving habitat for various species of grouse and woodcock through habitat management and protection.

**Answer the Call** is a partnership program with Quail Unlimited and the U.S. Department of the Interior's Bureau of Land Management emphasizing quail habitat management throughout the United States.



© Robert Shantz; rshantz.com

## How To Contact Us

Northern Region  
200 Broadway, Federal Bldg.  
Missoula, MT 59807  
406-329-3101

Rocky Mountain Region  
740 Simms St.  
Golden, CO 80401  
303-275-5007

Southwest Region  
333 Broadway SE  
Albuquerque, NM 87102  
505-842-3262

Intermountain Region  
Federal Bldg.  
324 25th St.  
Ogden, UT 84401  
801-625-5767

Pacific Southwest Region  
1323 Club Drive  
Vallejo, CA 94592  
707-562-8980

Pacific Northwest Region  
333 SW First Ave.  
Portland, OR 97204-3440  
503-808-2972



USDA Forest Service

## The Wildlife Program of the USDA Forest Service



USDA Forest Service

### Active Management

### Public Use



USDA Forest Service



Sara Faust, USGS

### Conserving Species

USDA Forest Service  
1400 Independence Ave., SW, Stop Code 1121  
Washington, DC 20250-1121

<http://www.fs.fed.us/biology/wildlife/index.html>

USDA is an equal opportunity provider and employer.

March 2005

FS-813



United States Department of Agriculture  
Forest Service

## Wildlife on Your National Forests

Working Together for Wildlife



© Earl Horn



© 2004 Joyce Gross



© Pete Bengueyfield



USDA Forest Service



© 2004 John White



© Rocky Mountain Bighorn Sheep Society



USDA Forest Service