



Federal Aviation
Administration

Milwaukee – General Mitchell International

Runway Safety Information March 2007



Airport Operations:	(414) 747-5325
Air Traffic Control:	(414) 489-2150
Hours of Operation:	Airport 24 hours Tower 24 hours
UNICOM:	122.95
ATIS:	126.4
Ground:	121.8
Tower:	119.1
Clearance Delivery:	120.8
Approach Control:	118.0/126.5
ASOS:	(414) 769-7161
VOR BAE 19.9 NW of airport	116.4
Milwaukee RCO:	122.65/122.4
Emergency:	121.5/243.0
Latitude:	N42°-53.83
Longitude:	87°53-80
Airfield Elevation:	723 feet
Variation:	03°W
From City:	6 mi south of downtown
Sectional Chart:	Chicago
Control Tower:	Yes
ARTCC:	Chicago Center 133.85
FSS:	Green Bay 1-800-WX-Brief
NOTAM Facility:	Green Bay FSS
Wind Indicator:	Yes
Beacon:	Yes
Fire and Rescue:	Yes
Airline Operations:	Yes
Customs:	Yes
LLWAS	Yes

OK-07-158

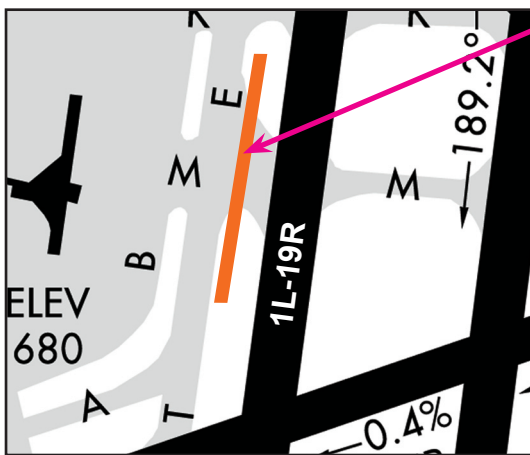
NOTE: During times when the sun is at low angles, i.e. early morning and late evening, hold position markings on east-west taxiways can be difficult to see due to glare.



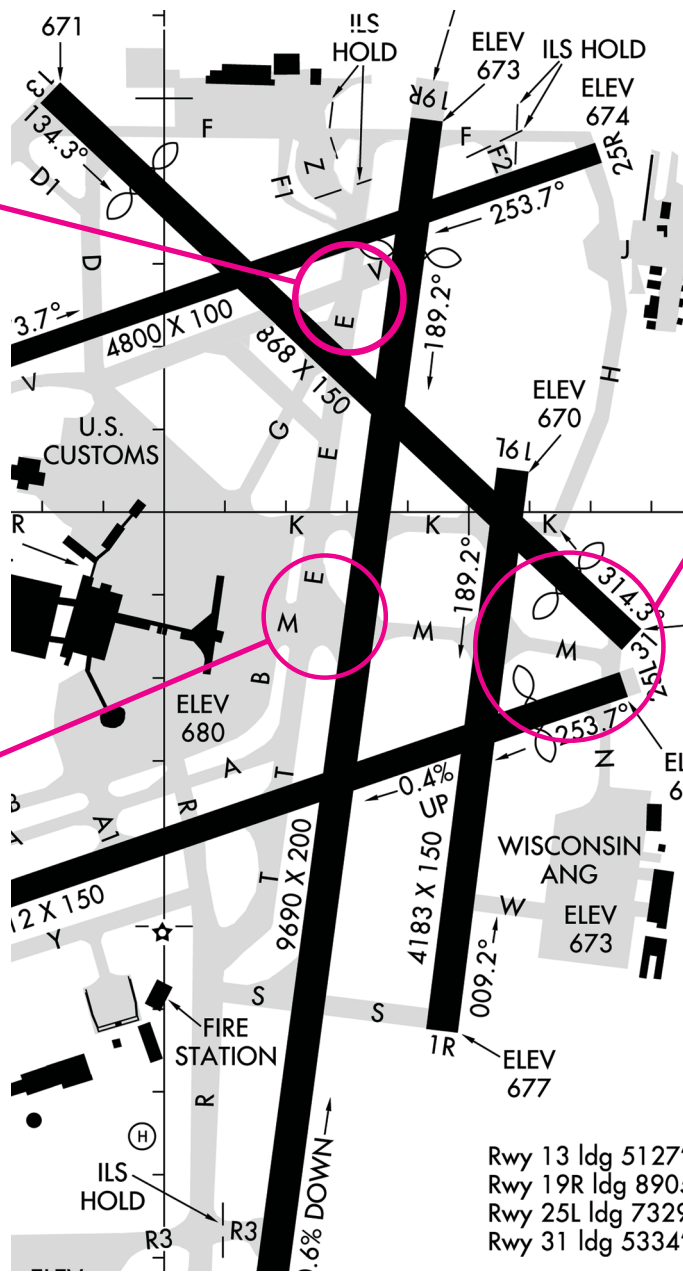
HOT SPOTS



HOT SPOT 1. Pilots taxiing northbound on Taxiway E for an intersection departure on Runway 19R at Taxiway V can end up entering Runway 7L-25R if they miss the right turn for Taxiway V. To avoid a runway incursion, pilots on Taxiway E should use extreme caution approaching Runway 7L-25R

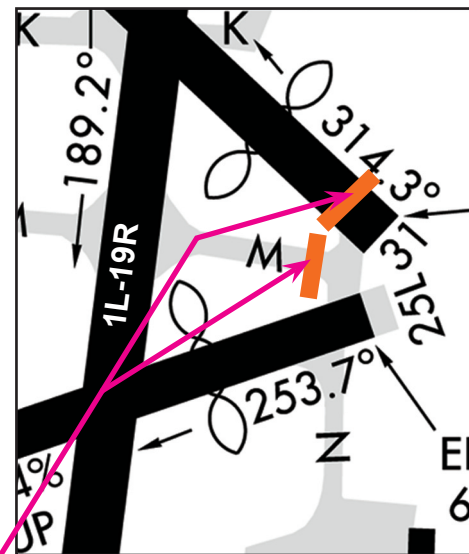


HOT SPOT 3. Use Caution in the area of Taxiway M and Runway 1L-19R. Pavement widens out as the taxiway approaches the runway and may cause confusion.



Rwy 13 ldg 5127'
 Rwy 19R ldg 890'
 Rwy 25L ldg 7325'
 Rwy 31 ldg 5334'

NOTE: Not for Navigation



HOT SPOT 2. Runway holding position markings for the approach end of Runway 25L are not where you expect them to be - they are well removed from the Runway 25L entry point. Aircraft taxiing for a Runway 25L departure on either Taxiway M or Runway 134/31, note the positions of the Runway 25L runway holding position markings.

NOTE: The orange lines on Inserts denote runway holding position markings.