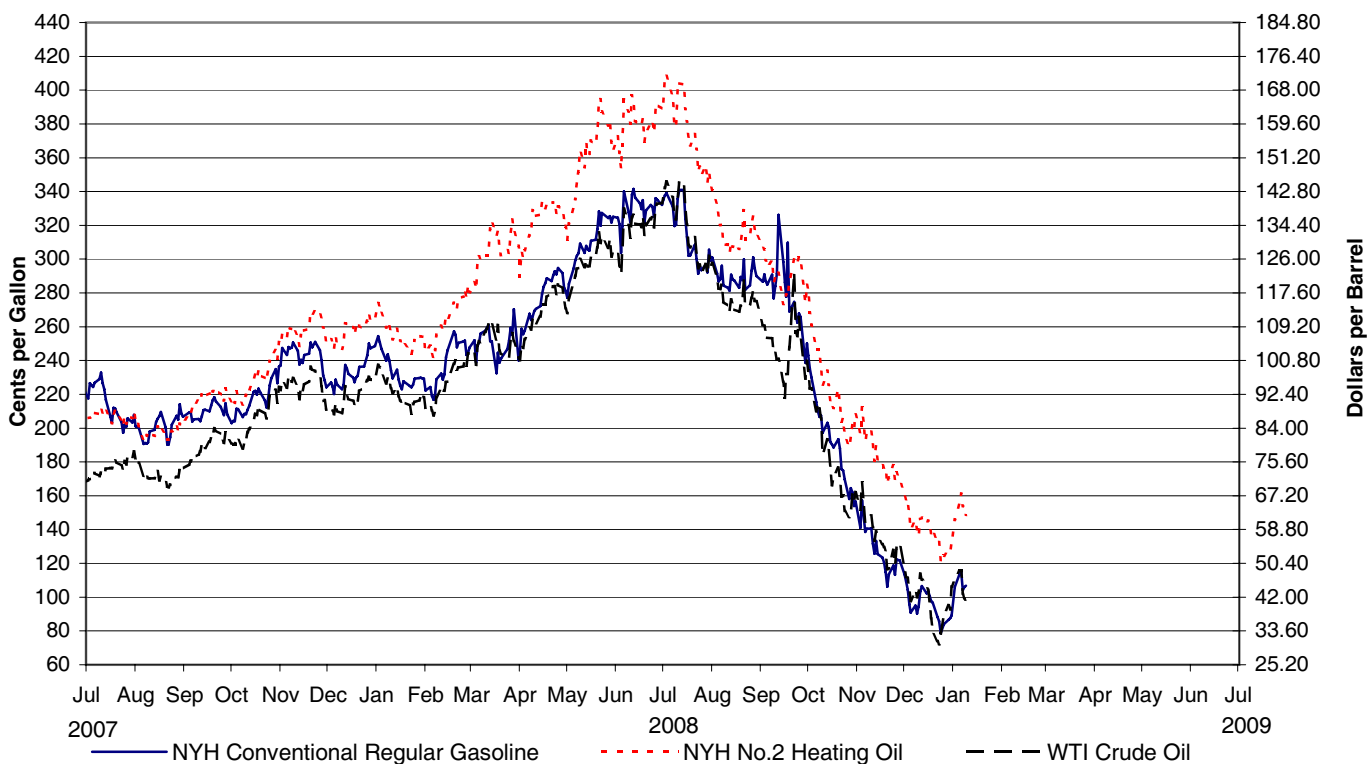
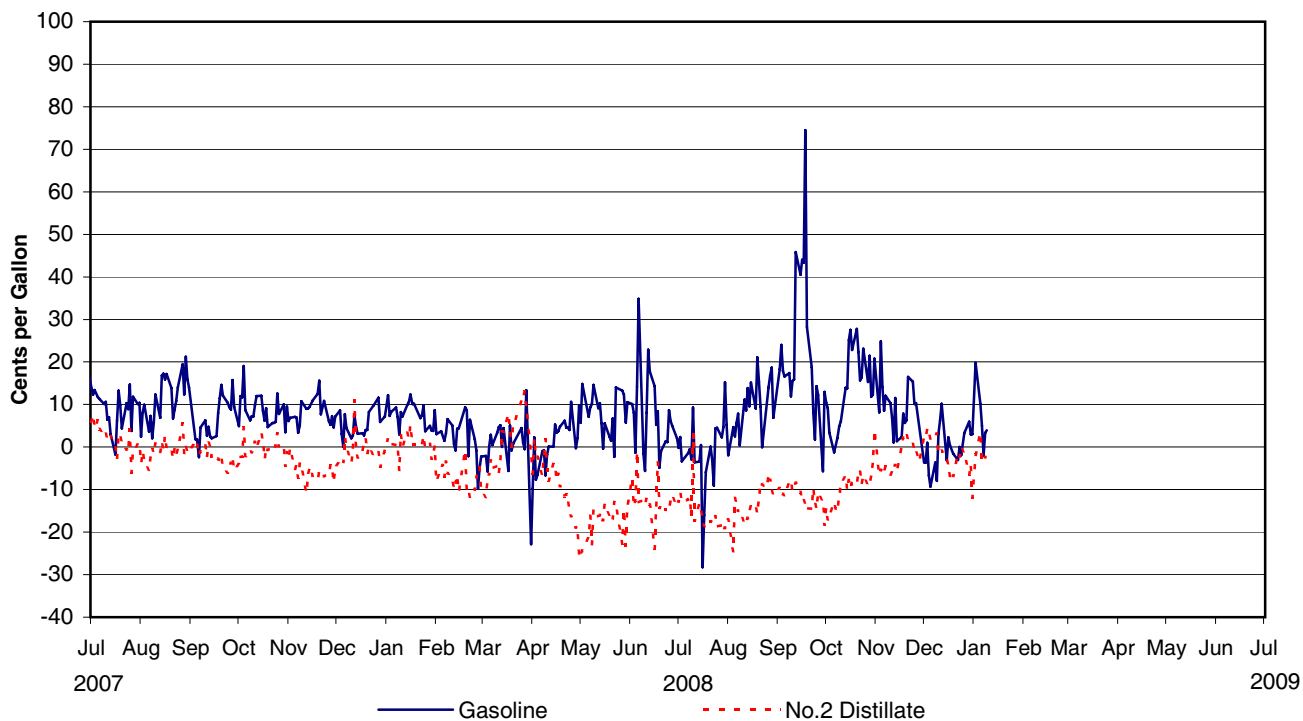


Figure 11. Daily Crude Oil and Petroleum Product Spot Prices, July 2007 to Present



Note: See Glossary for definitions of abbreviations.
 Source: See page 33.

Figure 12. Daily Trans-Atlantic Spot Product Price Differentials: New York Harbor less Rotterdam (ARA), July 2007 to Present



Notes: See Glossary for definitions of abbreviations. See Appendix A, Technical Note 1, page 40, for more information about the data in this graph.
 As of April 30, 2008, Rotterdam (ARA), a 50 ppm sulfur gasoline, is no longer available and has been replaced with ARA 10 ppm sulfur gasoline starting with 2007.
 Source: See page 33.