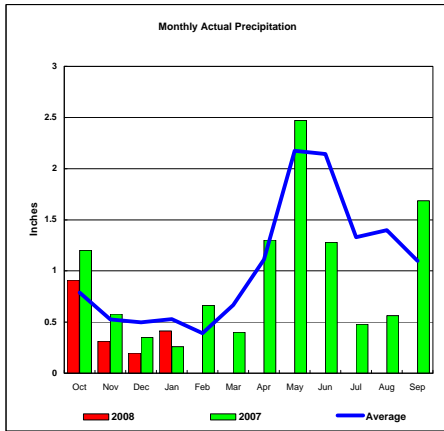
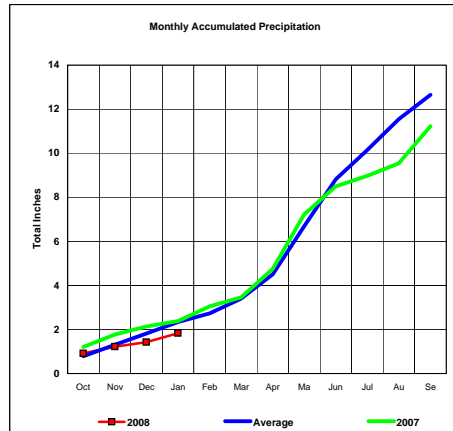


**BASIN PRECIPITATION - ACTUAL MONTHLY vs AVERAGE MONTHLY TOTALS**  
 Data for the month of January 2008

**Upper Missouri River Basin**

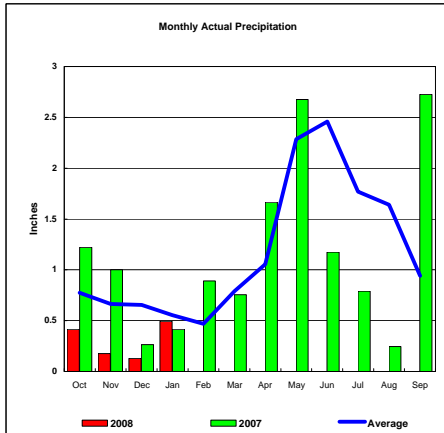


Total Actual Precipitation thru Jan (Inch.) - 1.83

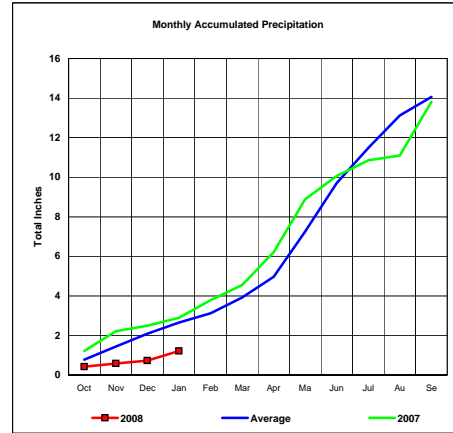


Total Average Precipitation thru Jan (Inch.) - 2.34  
 Percent of Average for January - 78.31%

**Milk River Basin**

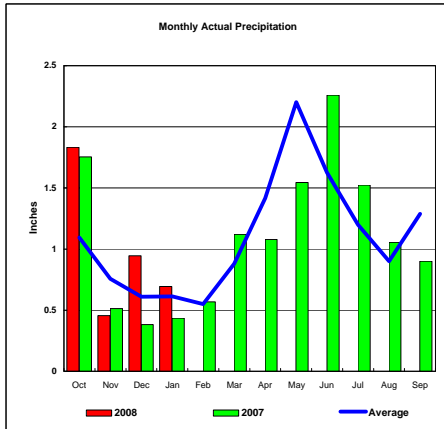


Total Actual Precipitation thru Jan (Inch.) - 1.22

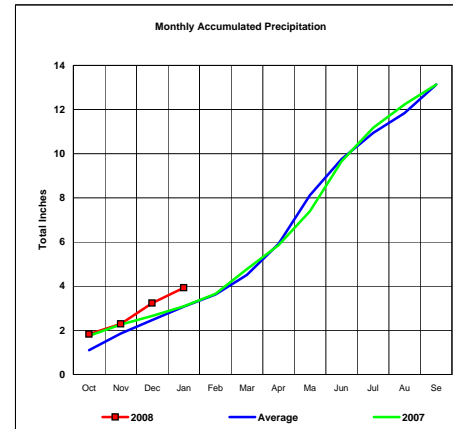


Total Average Precipitation thru Jan (Inch.) - 2.65  
 Percent of Average for January - 45.85%

**Bighorn River Basin**



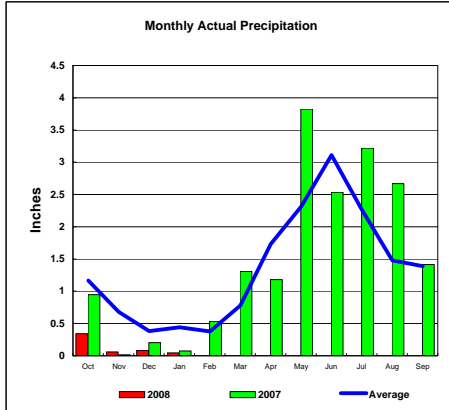
Total Actual Precipitation thru Jan (Inch.) - 3.93



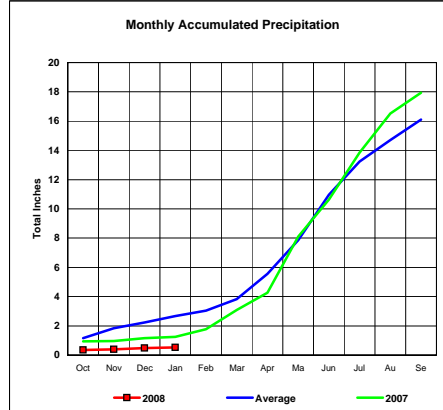
Total Average Precipitation thru Jan (Inch.) - 3.08  
 Percent of Average for January - 127.72%

**BASIN PRECIPITATION - ACTUAL MONTHLY vs AVERAGE MONTHLY TOTALS**  
Data for the month of January 2008

**Heart River Basin**

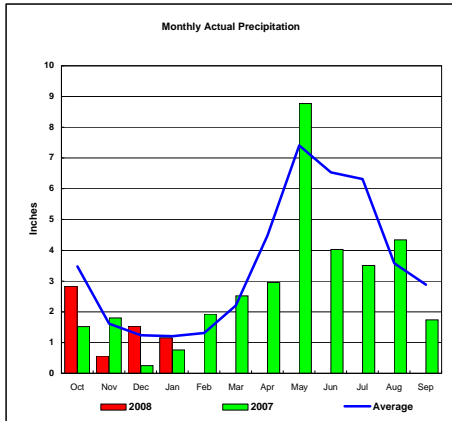


Total Actual Precipitation thru Jan (Inch.) - 0.53

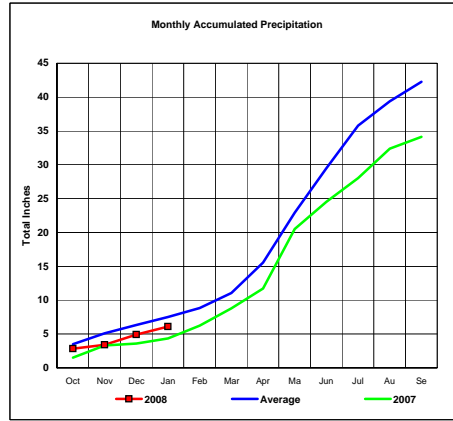


Total Average Precipitation thru Jan (Inch.) - 2.67  
Percent of Average for January - 19.89%

**Cheyenne River Basin**

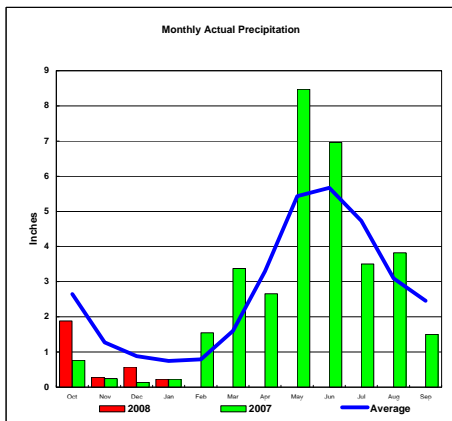


Total Actual Precipitation thru Jan (Inch.) - 6.08

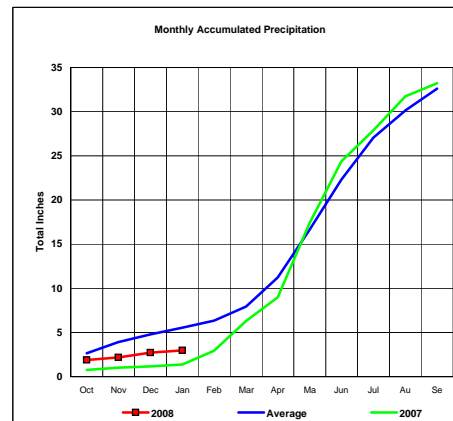


Total Average Precipitation thru Jan (Inch.) - 7.54  
Percent of Average for January - 80.66%

**Grand River Basin**



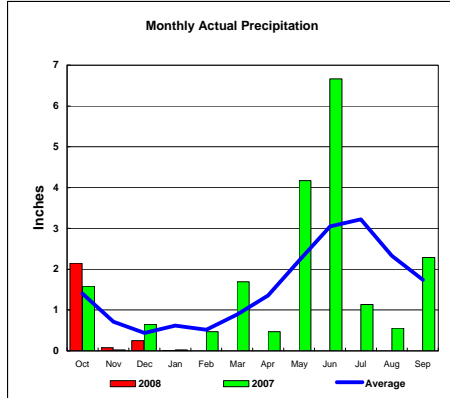
Total Actual Precipitation thru Jan (Inch.) - 2.96



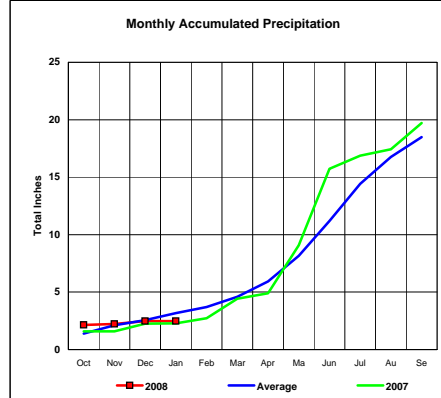
Total Average Precipitation thru Jan (Inch.) - 5.55  
Percent of Average for January - 53.33%

**BASIN PRECIPITATION - ACTUAL MONTHLY vs AVERAGE MONTHLY TOTALS**  
Data for the month of January 2008

**James River Basin**

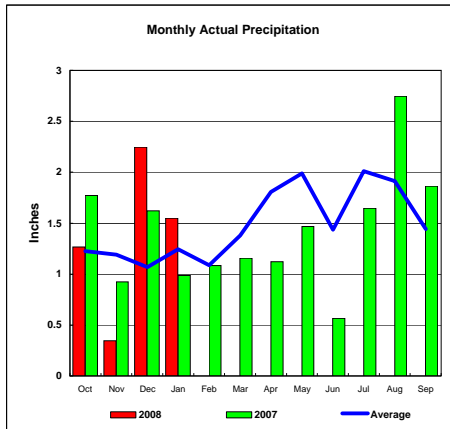


Total Actual Precipitation thru Jan (Inch.) - 2.49

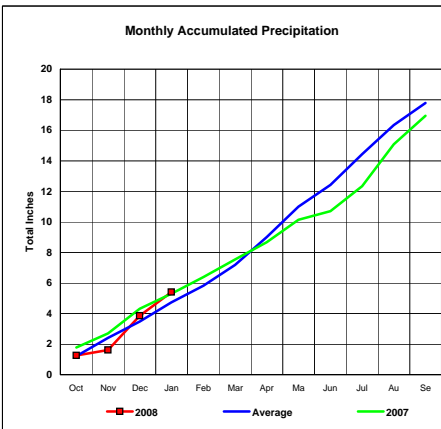


Total Average Precipitation thru Jan (Inch.) - 3.17  
Percent of Average for January - 78.55%

**Colorado-Big Thompson Project**

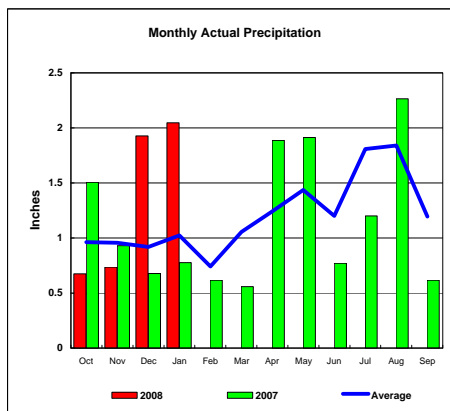


Total Actual Precipitation thru Jan (Inch.) - 5.41

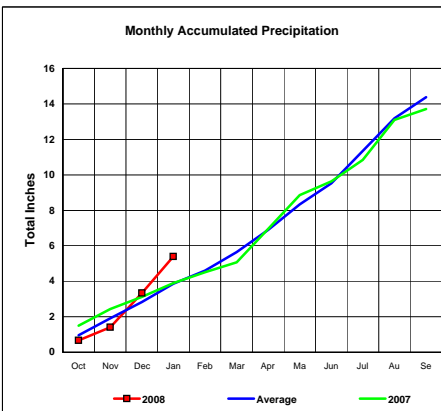


Total Average Precipitation thru Jan (Inch.) - 4.73  
Percent of Average for January - 114.39%

**Fryingpan-Arkansas Project**



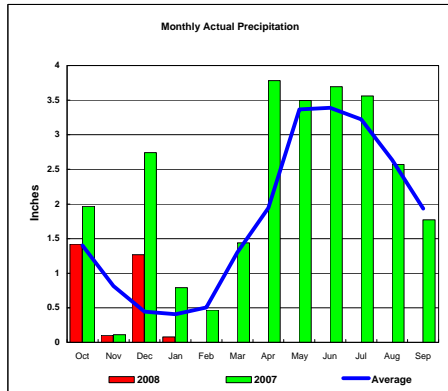
Total Actual Precipitation thru Jan (Inch.) - 5.39



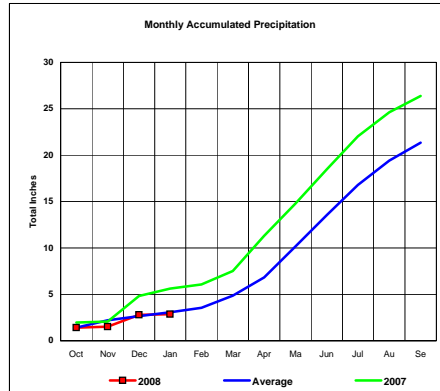
Total Average Precipitation thru Jan (Inch.) - 3.86  
Percent of Average for January - 139.60%

**BASIN PRECIPITATION - ACTUAL MONTHLY vs AVERAGE MONTHLY TOTALS**  
**Data for the month of January 2008**

**Republican River Basin**

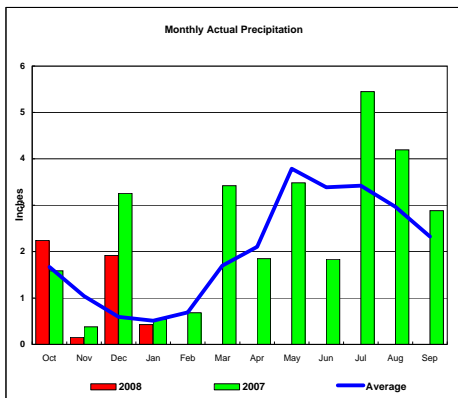


Total Actual Precipitation thru Jan (Inch.) - 2.86

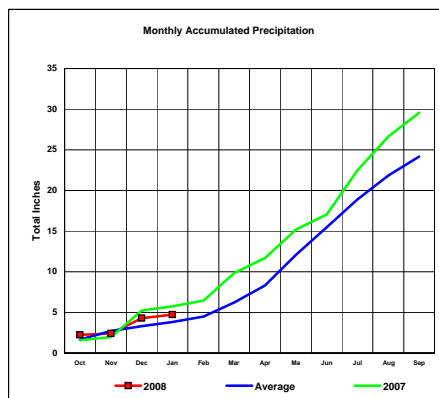


Total Average Precipitation thru Jan (Inch.) - 3.07  
 Percent of Average for January - 93.35%

**Solomon River Basin**

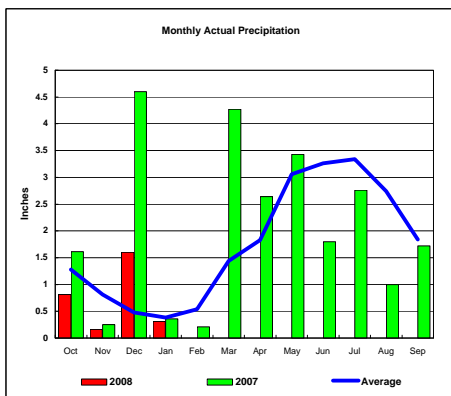


Total Actual Precipitation thru Jan (Inch.) - 4.74

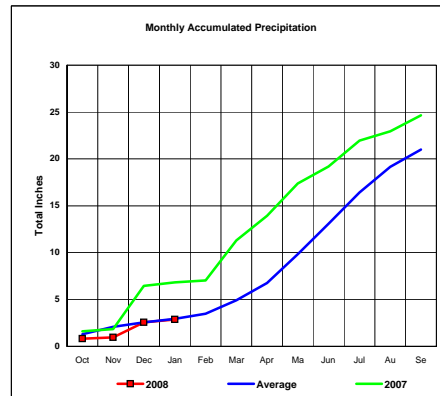


Total Average Precipitation thru Jan (Inch.) - 3.82  
 Percent of Average for January - 124.19%

**Smoky Hill River Basin**



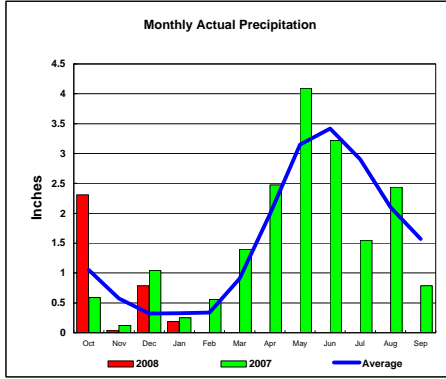
Total Actual Precipitation thru Jan (Inch.) - 2.88



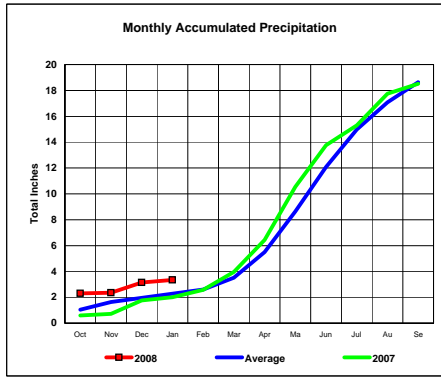
Total Average Precipitation thru Jan (Inch.) - 2.95  
 Percent of Average for January - 97.63%

**BASIN PRECIPITATION - ACTUAL MONTHLY vs AVERAGE MONTHLY TOTALS**  
Data for the month of January 2008

***Niobrara River Basin***

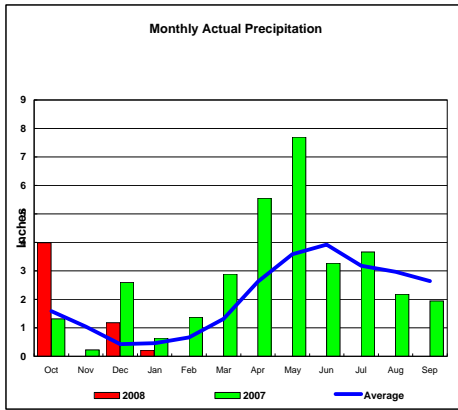


Total Actual Precipitation thru Jan (Inch.) - 3.33

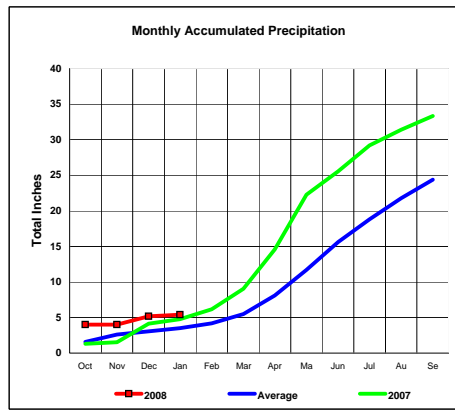


Total Average Precipitation thru Jan (Inch.) - 2.27  
Percent of Average for January - 146.70%

***Lower Platte River Basin***

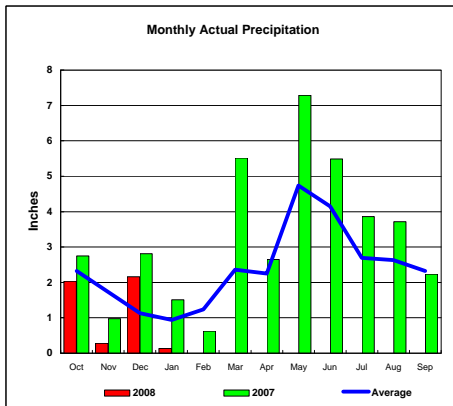


Total Actual Precipitation thru Jan (Inch.) - 5.39

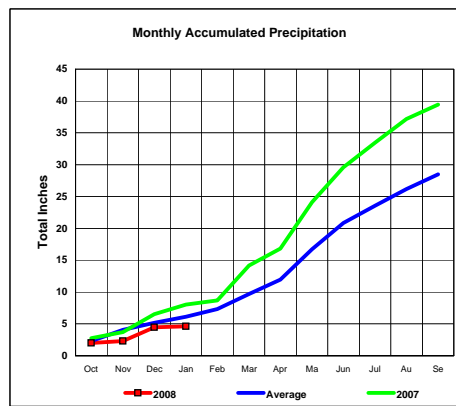


Total Average Precipitation thru Jan (Inch.) - 3.52  
Percent of Average for January - 152.98%

***Arkansas River Basin***



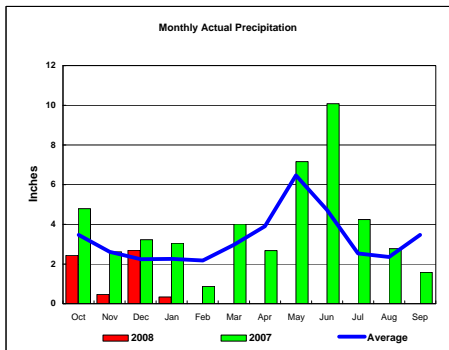
Total Actual Precipitation thru Jan (Inch.) - 4.61



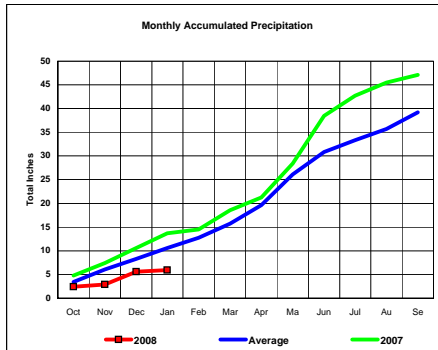
Total Average Precipitation thru Jan (Inch.) - 6.12  
Percent of Average for January - 75.33%

**BASIN PRECIPITATION - ACTUAL MONTHLY vs AVERAGE MONTHLY TOTALS**  
Data for the month of January 2008

**Red River Basin**

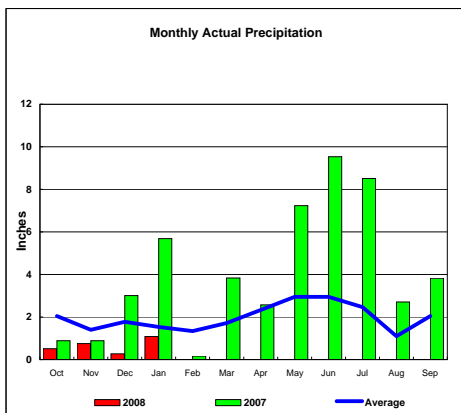


Total Actual Precipitation thru Jan (Inch.) - 5.93

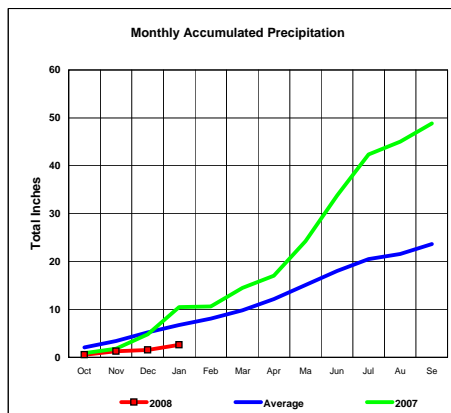


Total Average Precipitation thru Jan (Inch.) - 10.58  
Percent of Average for January - 56.01%

**Nueces River Basin**

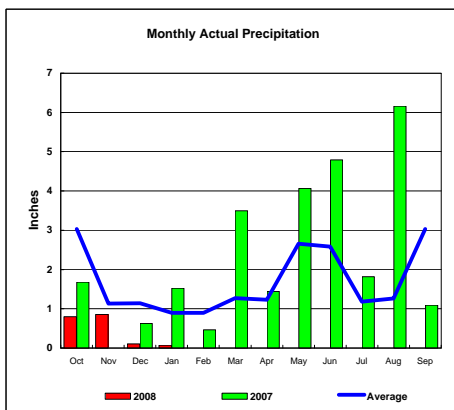


Total Actual Precipitation thru Jan (Inch.) - 2.61

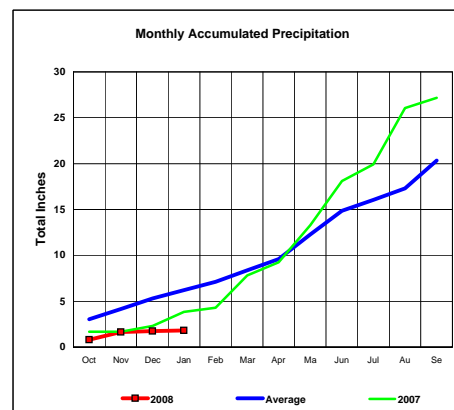


Total Average Precipitation thru Jan (Inch.) - 6.74  
Percent of Average for January - 38.72%

**Colorado River Basin**



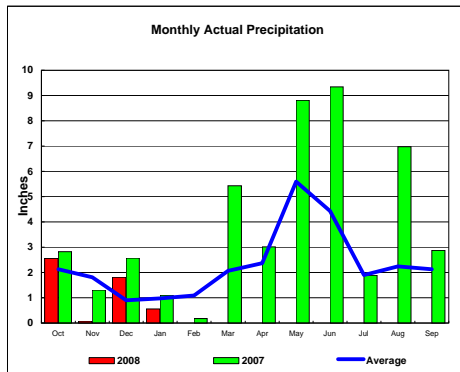
Total Actual Precipitation thru Jan (Inch.) - 1.83



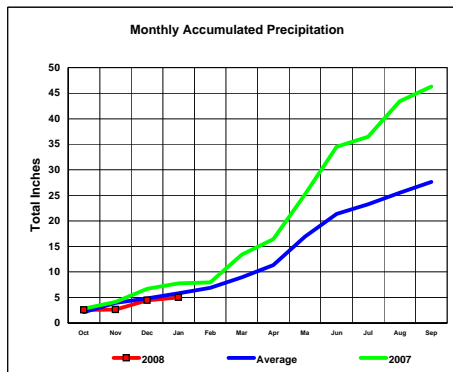
Total Average Precipitation thru Jan (Inch.) - 6.21  
Percent of Average for January - 29.49%

**BASIN PRECIPITATION - ACTUAL MONTHLY vs AVERAGE MONTHLY TOTALS**  
 Data for the month of January 2008

**Washita River Basin**

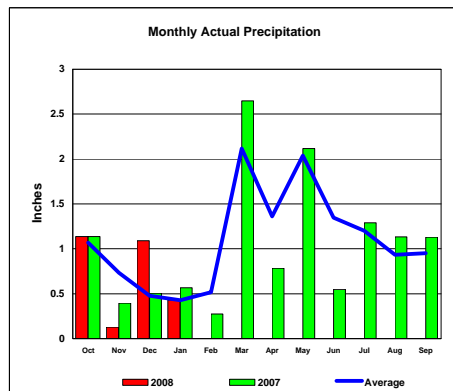


Total Actual Precipitation thru Jan (Inch.) - 5.01

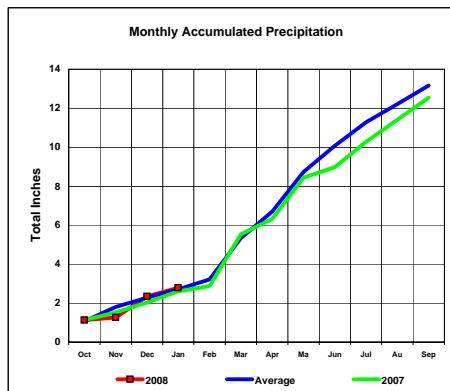


Total Average Precipitation thru Jan (Inch.) - 5.81  
 Percent of Average for January - 86.14%

**North Platte River Basin**



Total Actual Precipitation thru Jan (Inch.) - 2.79



Total Average Precipitation thru Jan (Inch.) - 2.71  
 Percent of Average for January - 103.05%