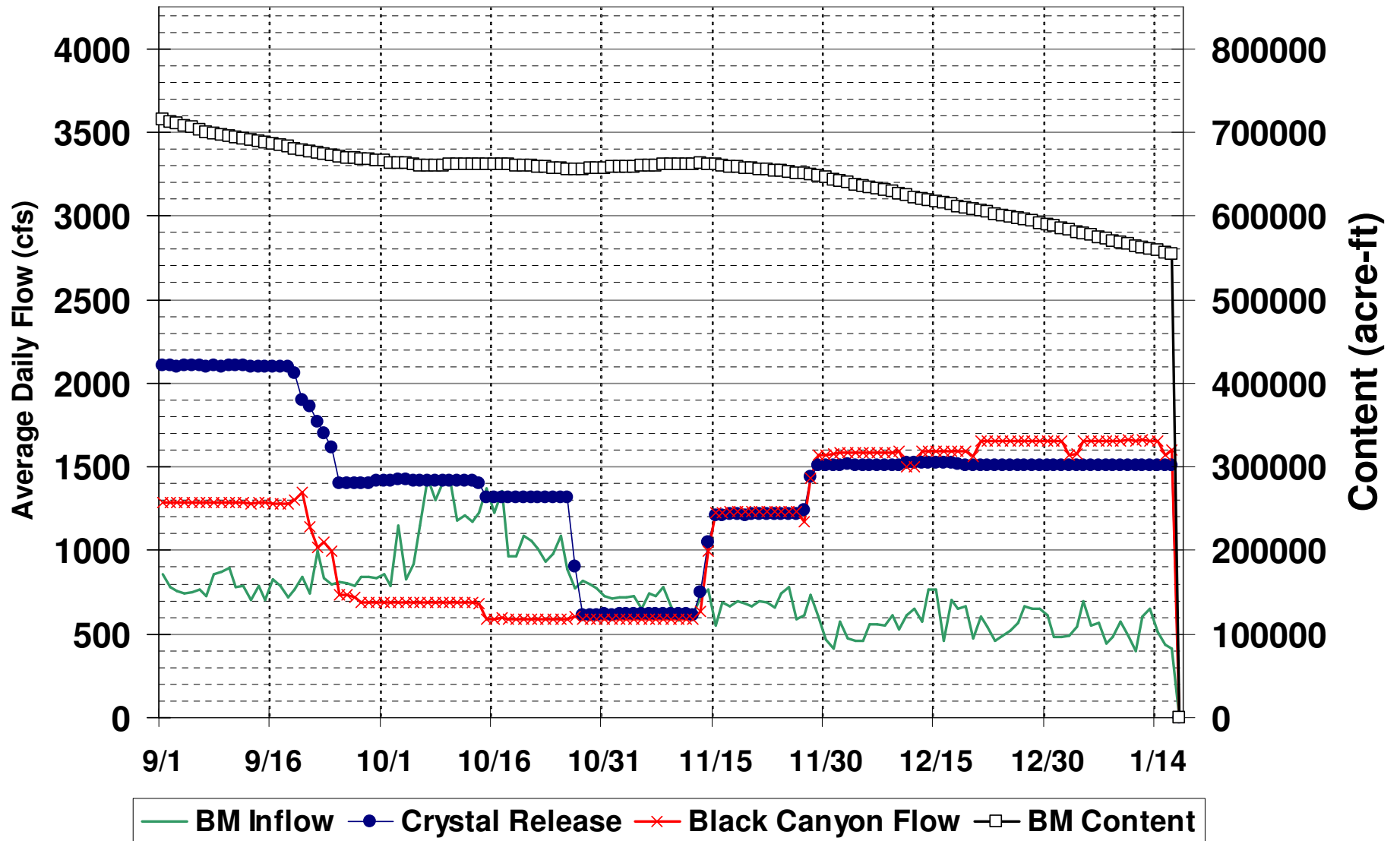
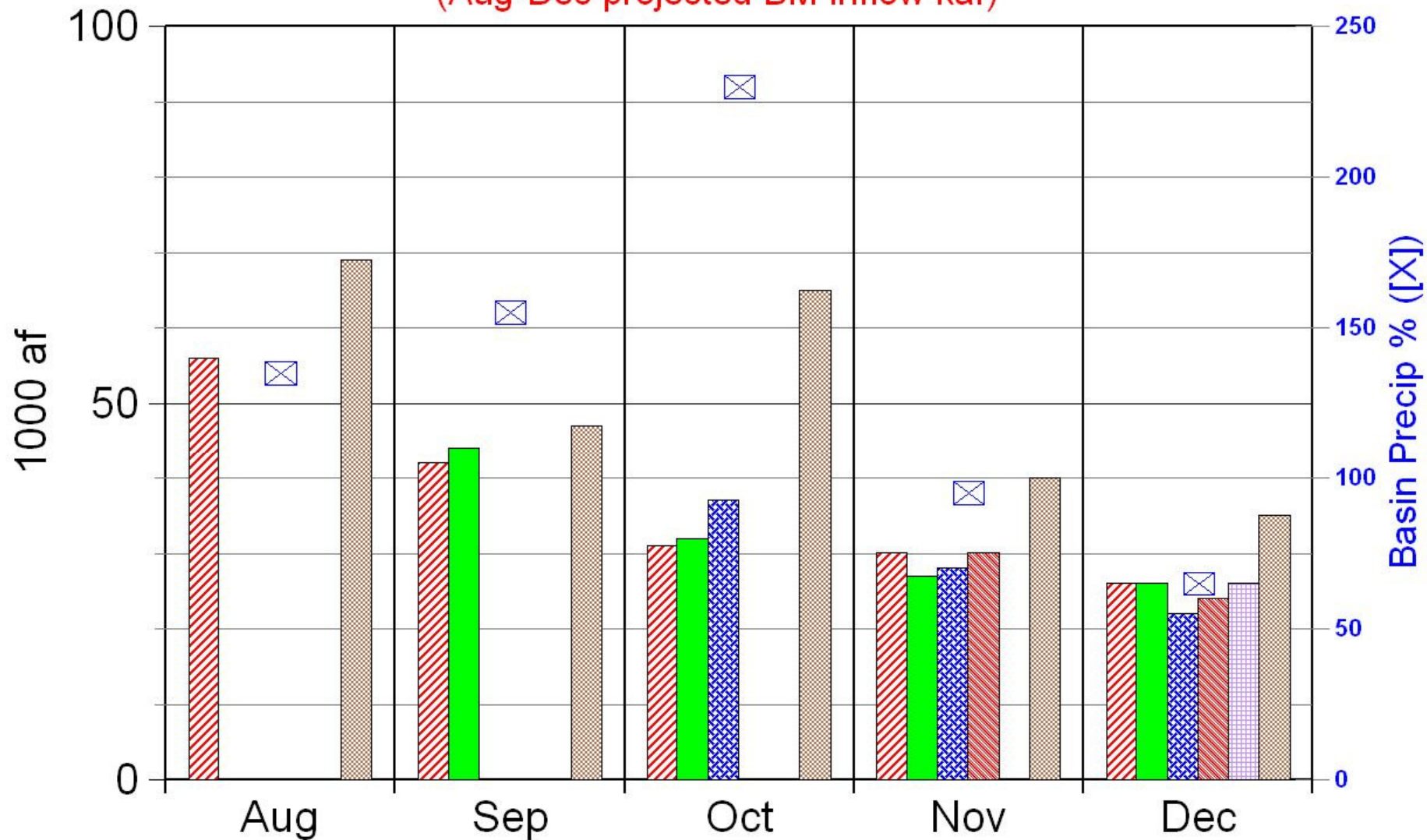


September 2006 - January 2007

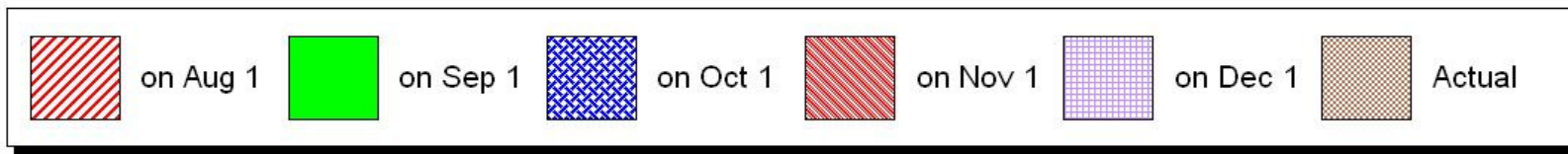
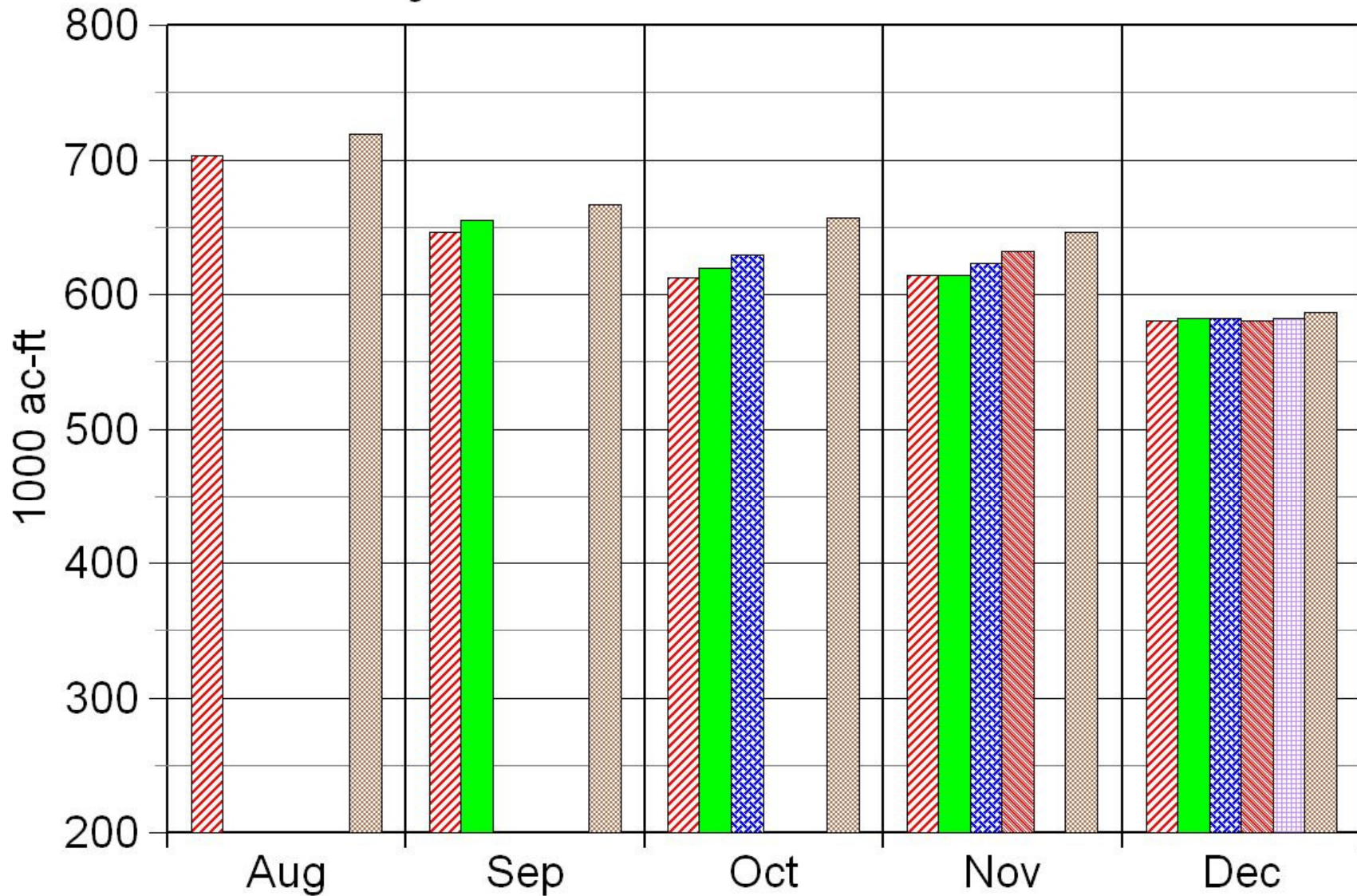


Projected Blue Mesa Inflow

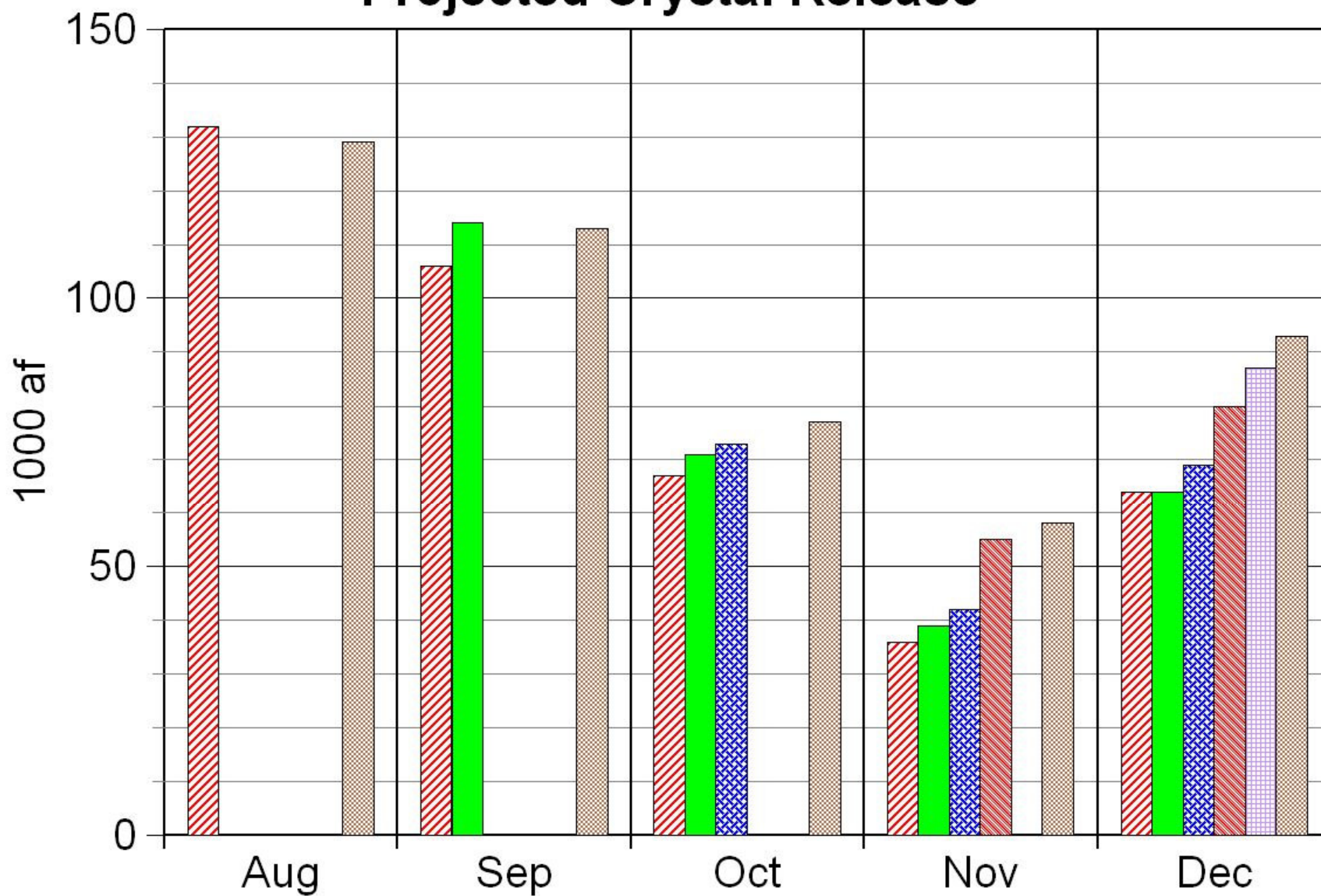
(Aug-Dec projected BM inflow kaf)



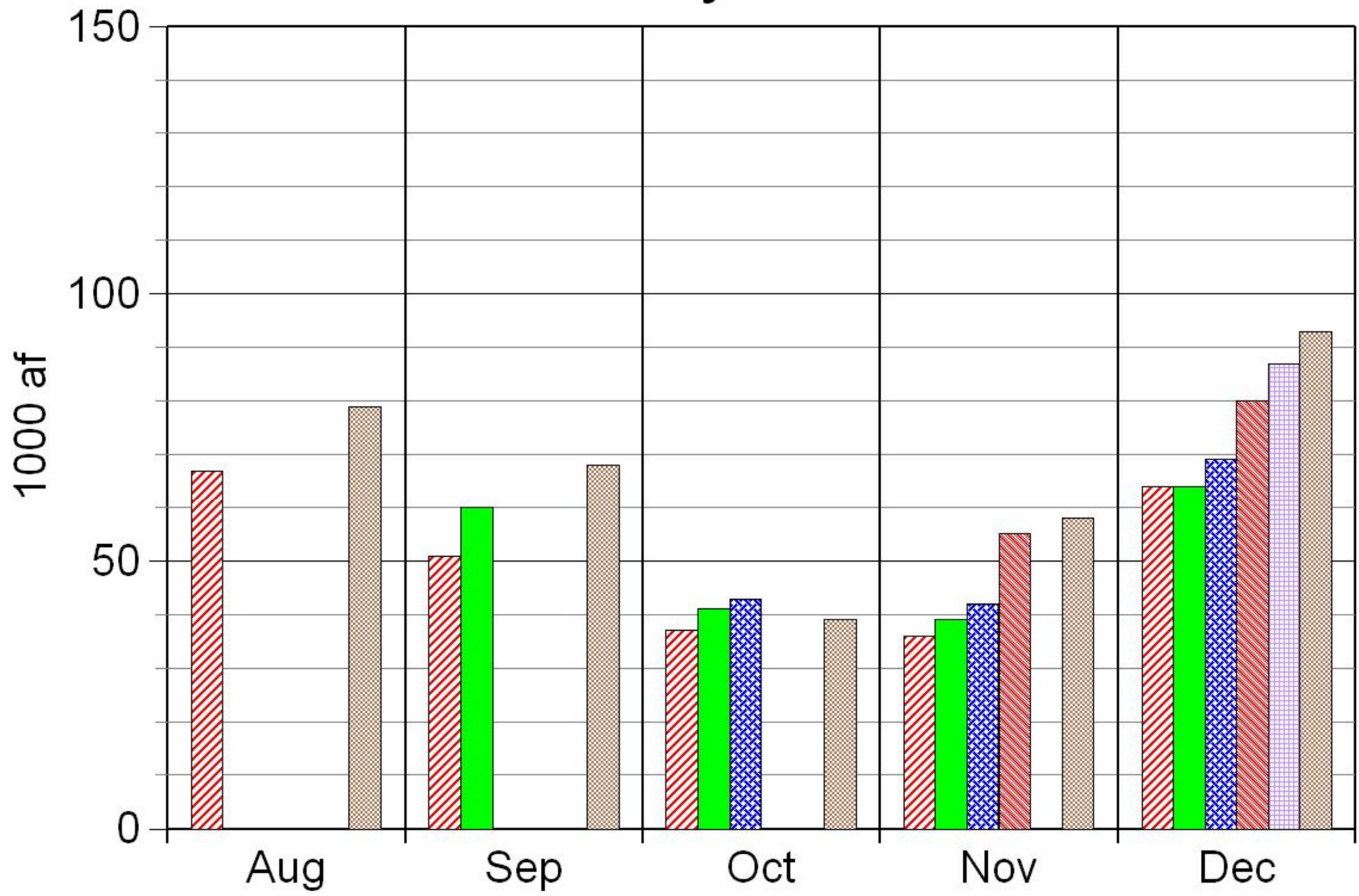
Projected Blue Mesa Content



Projected Crystal Release



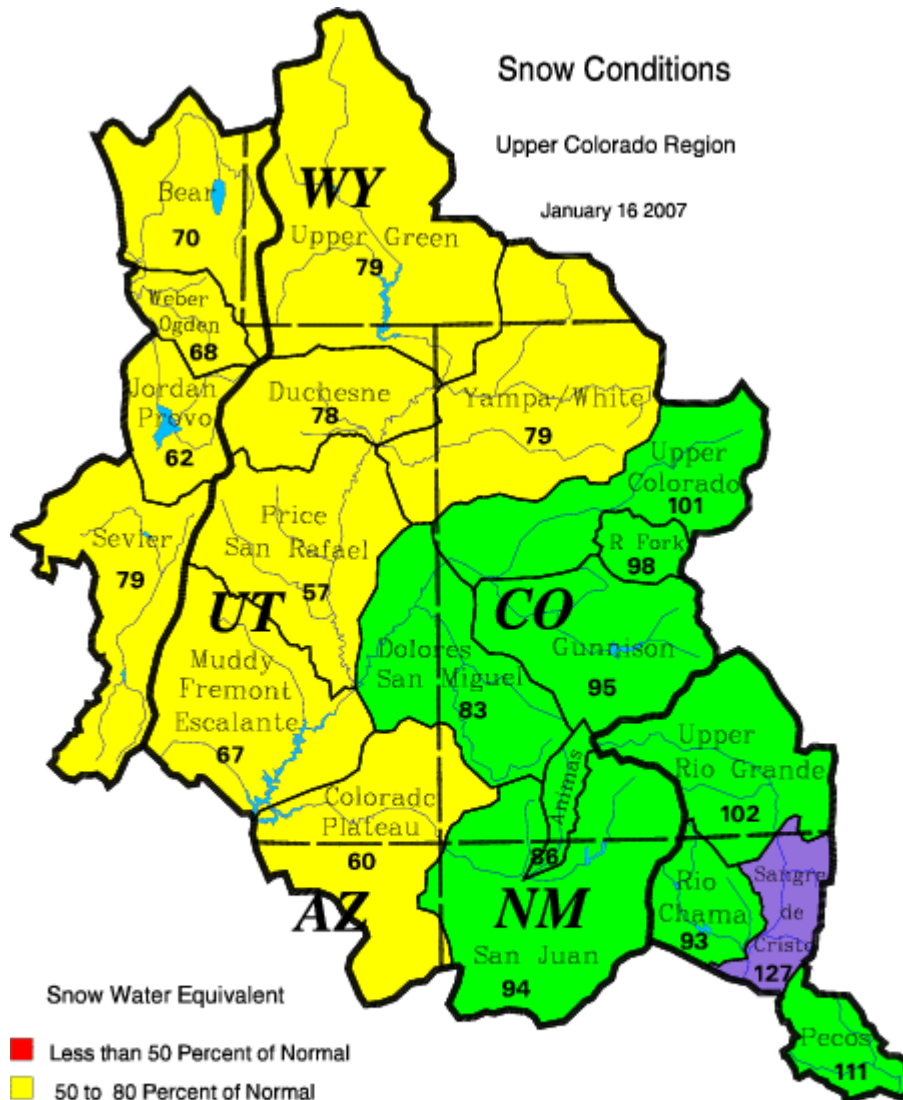
Black Canyon Flow



Snow Conditions

Upper Colorado Region

January 16 2007



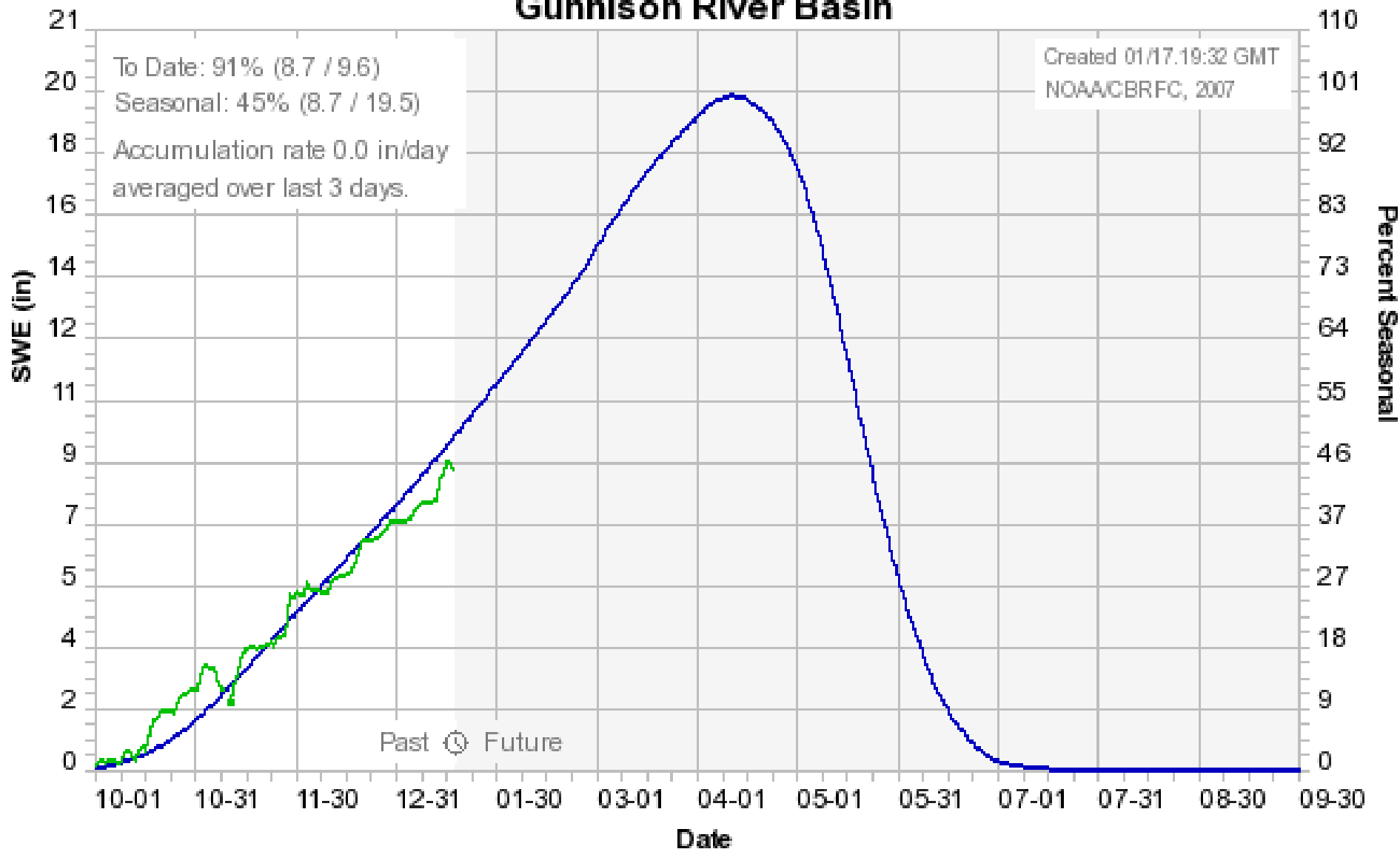
Snow Water Equivalent

- Less than 50 Percent of Normal
- 50 to 80 Percent of Normal
- 80 to 120 Percent of Normal
- 120 to 150 Percent of Normal
- Greater than 150 Percent of Normal

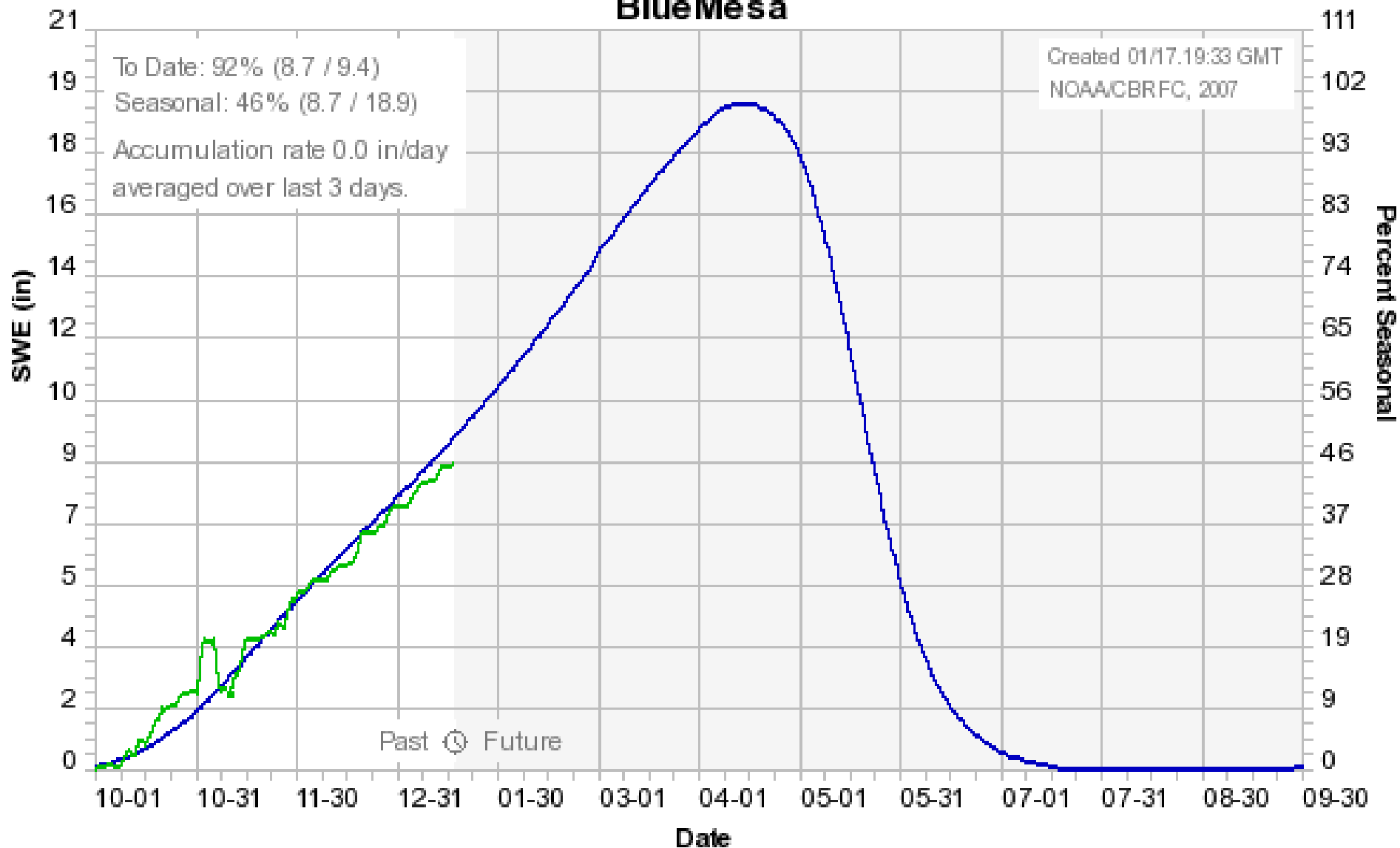
Upper Colorado
GIS
Region

Data Provided by the Natural Resource Conservation Service

Colorado Basin River Forecast Center Gunnison River Basin



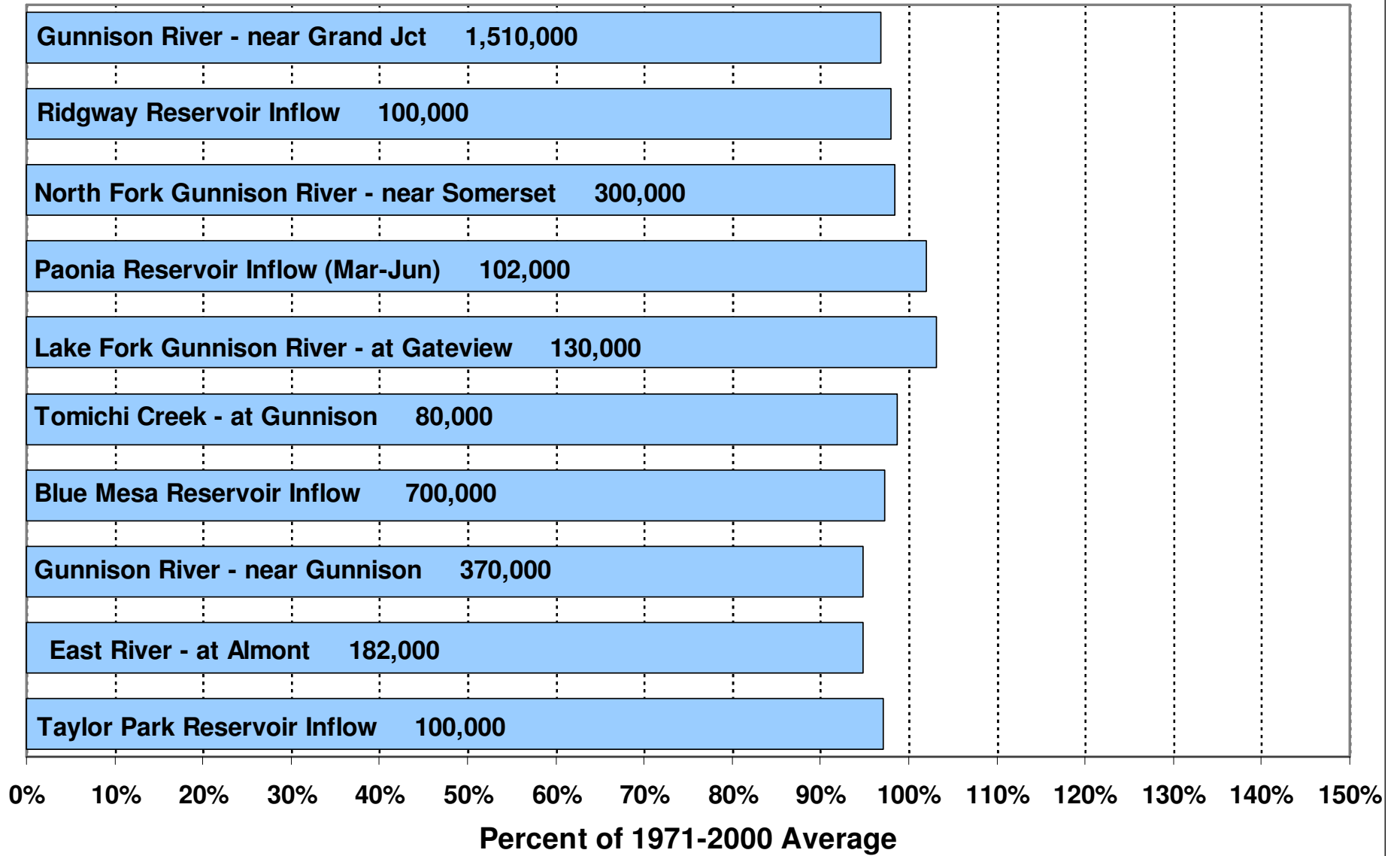
Colorado Basin River Forecast Center Blue Mesa



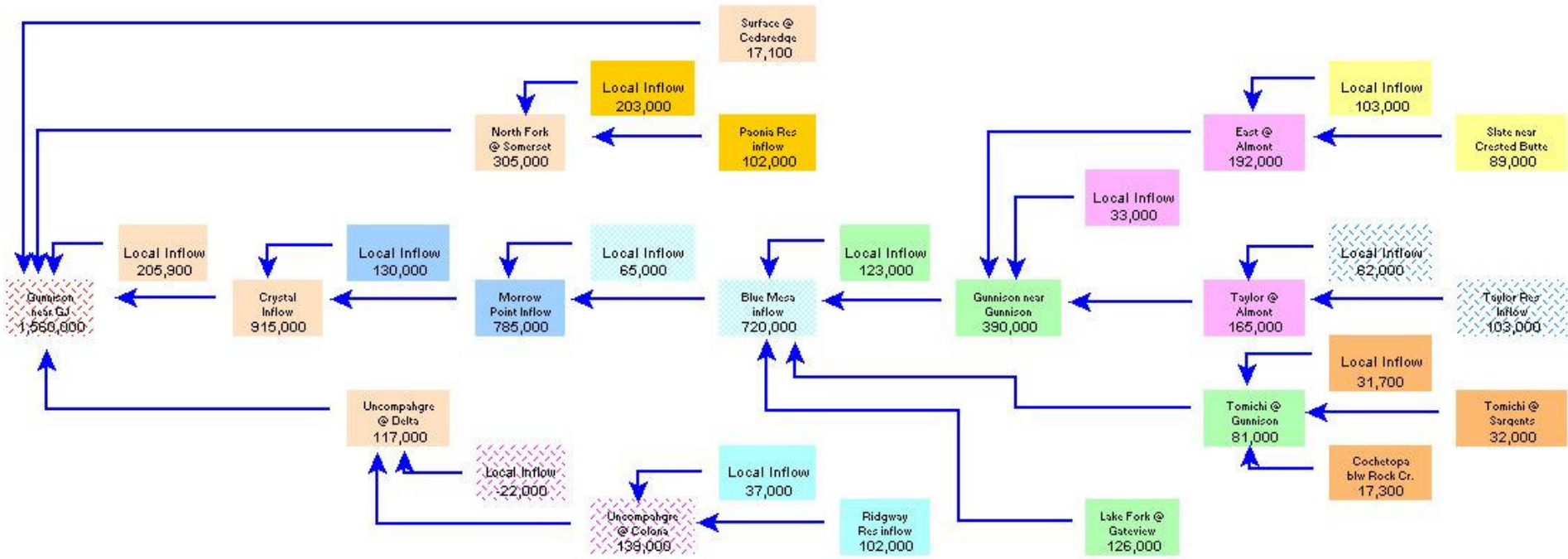
avg — 2007 —

Forecasted April-July Runoff

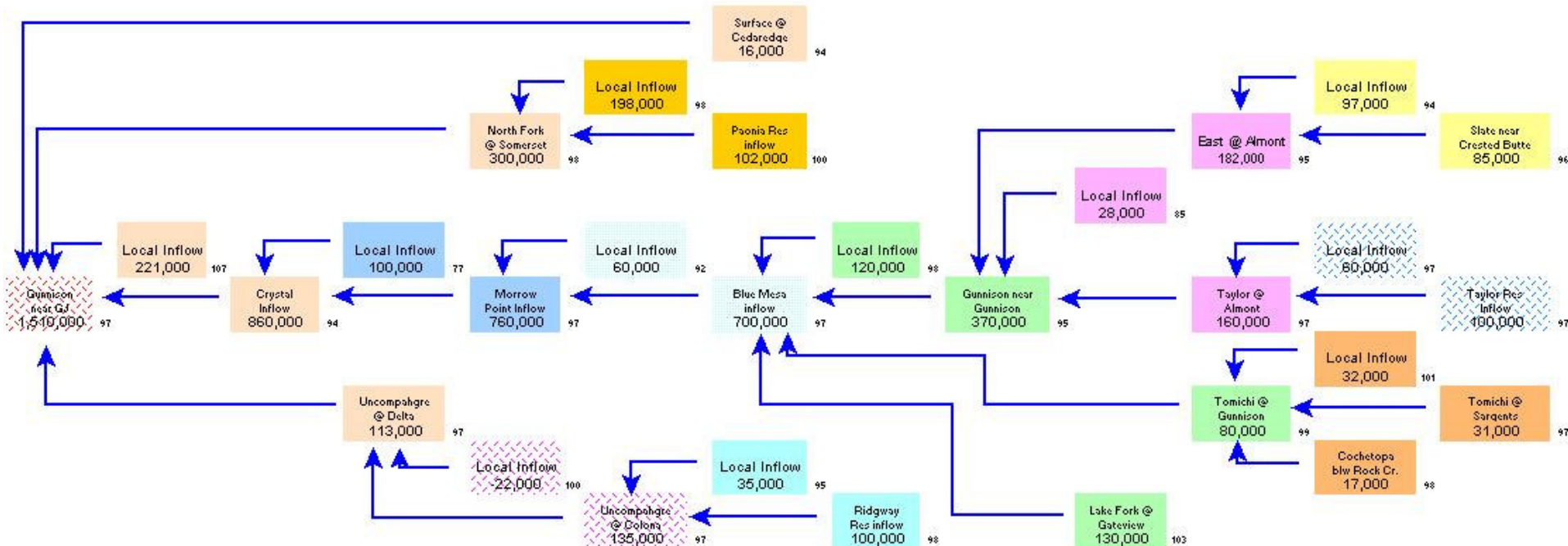
As of January 1st



AVERAGE April-July RUNOFF ac-ft

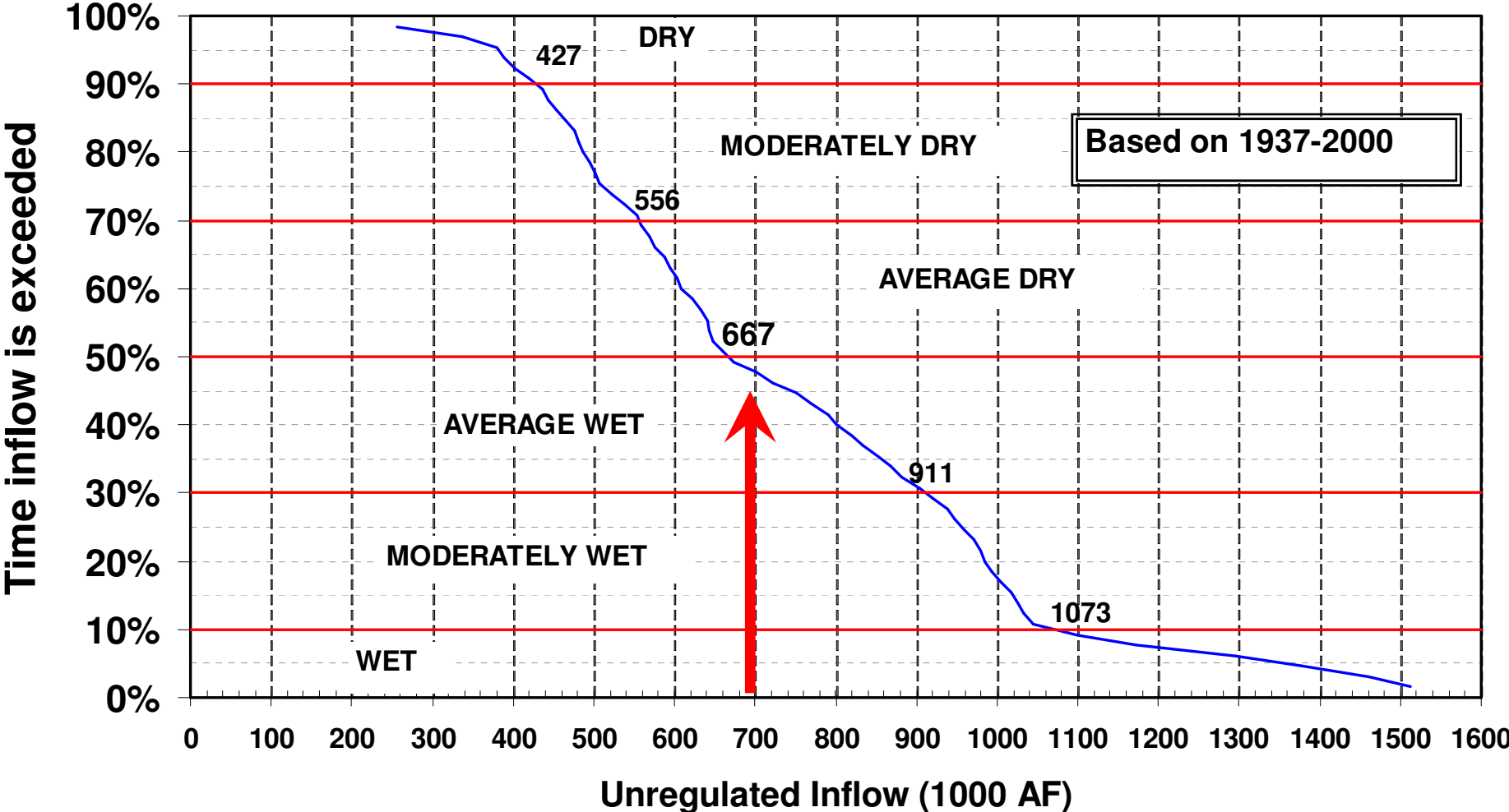


JAN 1 FORECASTED 2007 April-July RUNOFF ac-ft



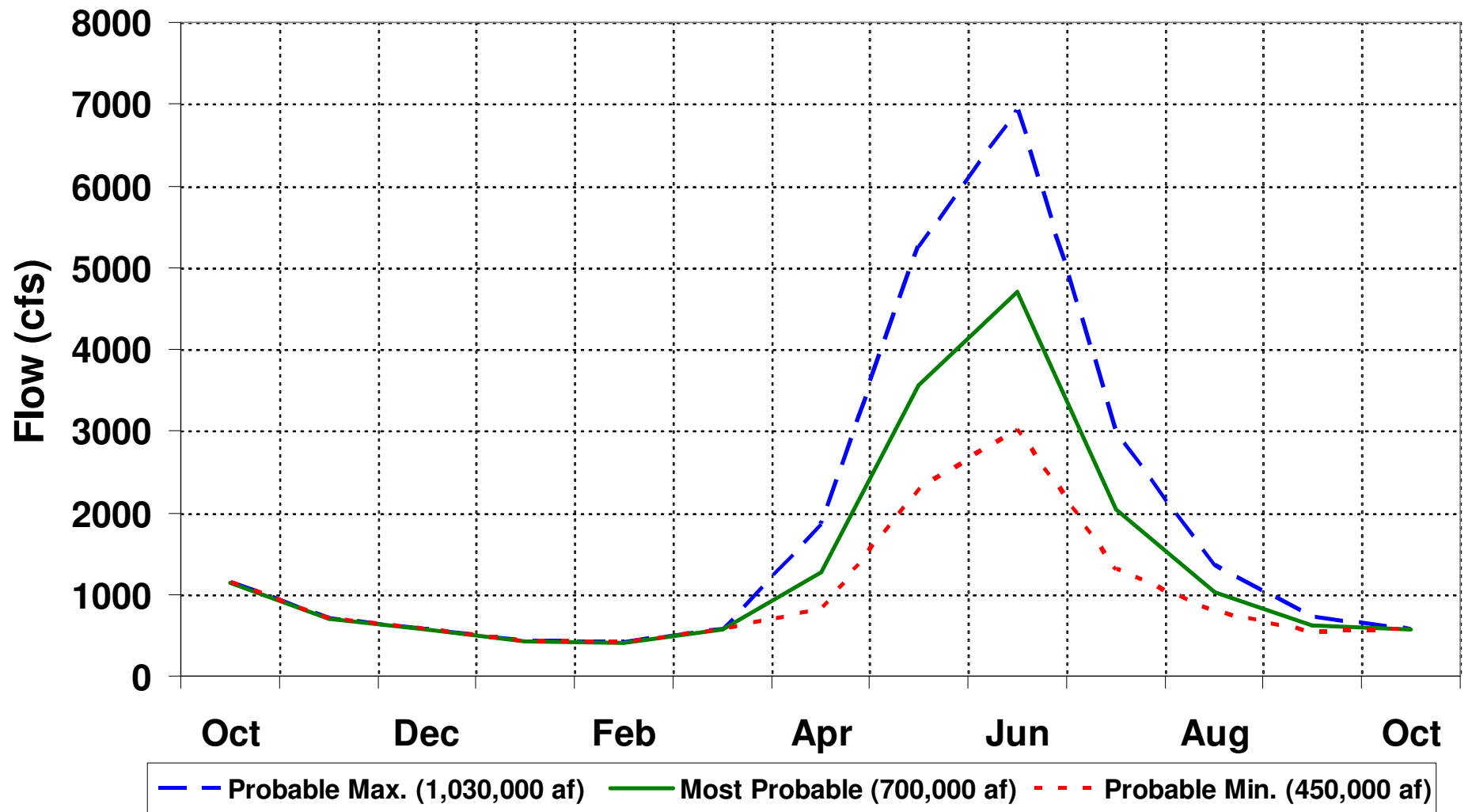
Blue Mesa Reservoir

April - July Unregulated Inflow

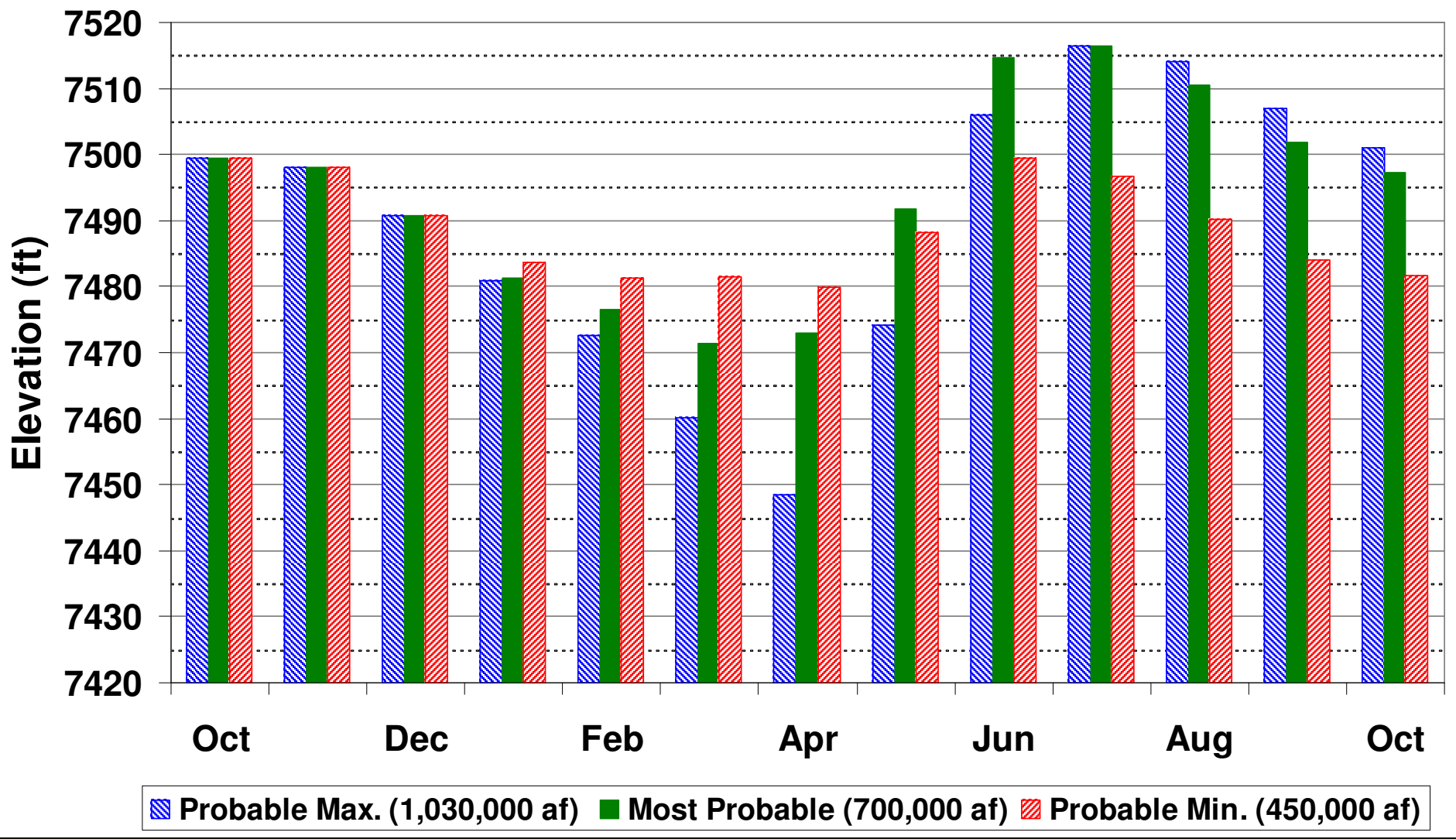


Unregulated Blue Mesa Inflow

Monthly Average

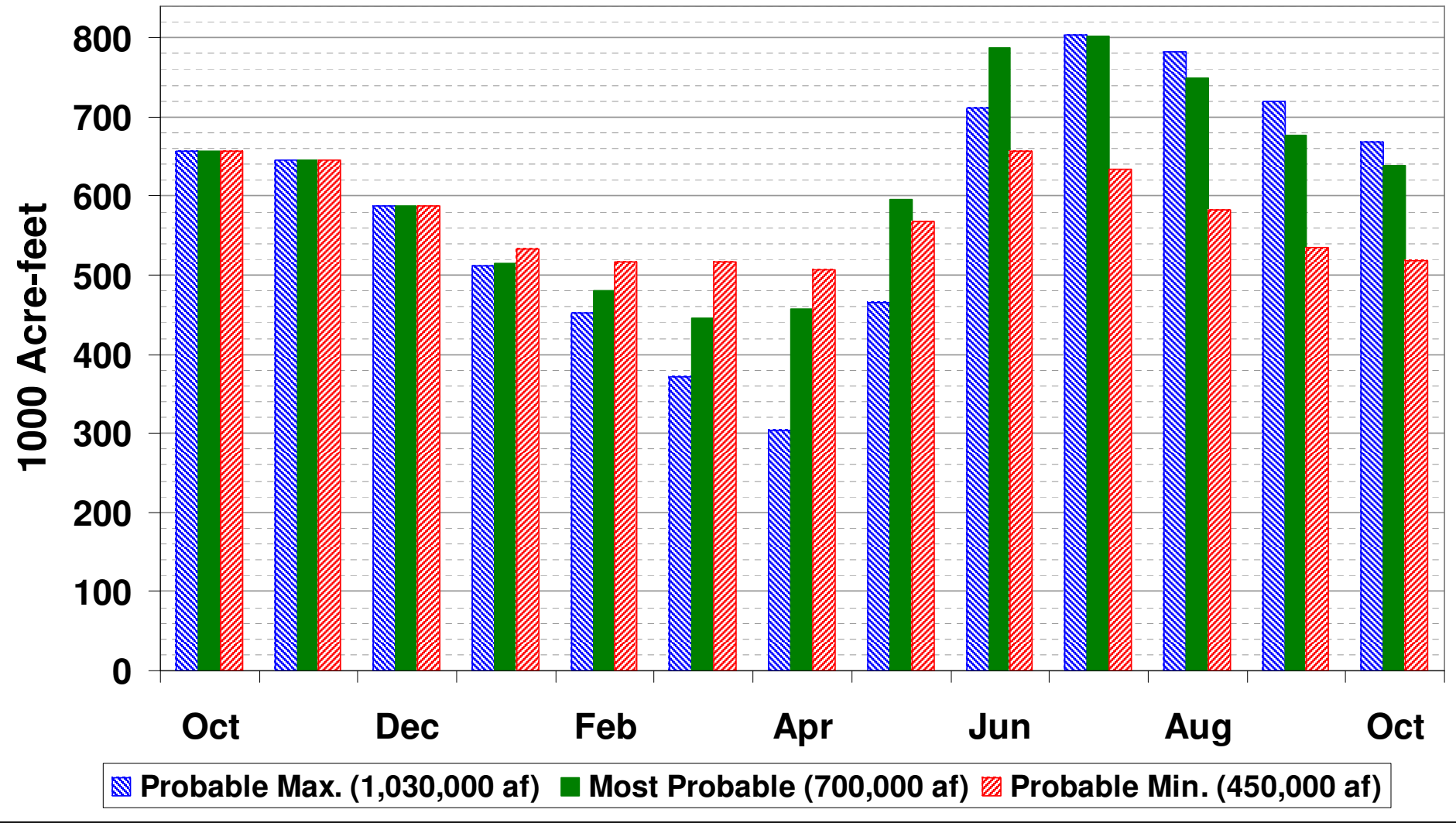


Blue Mesa Elevation End of Month

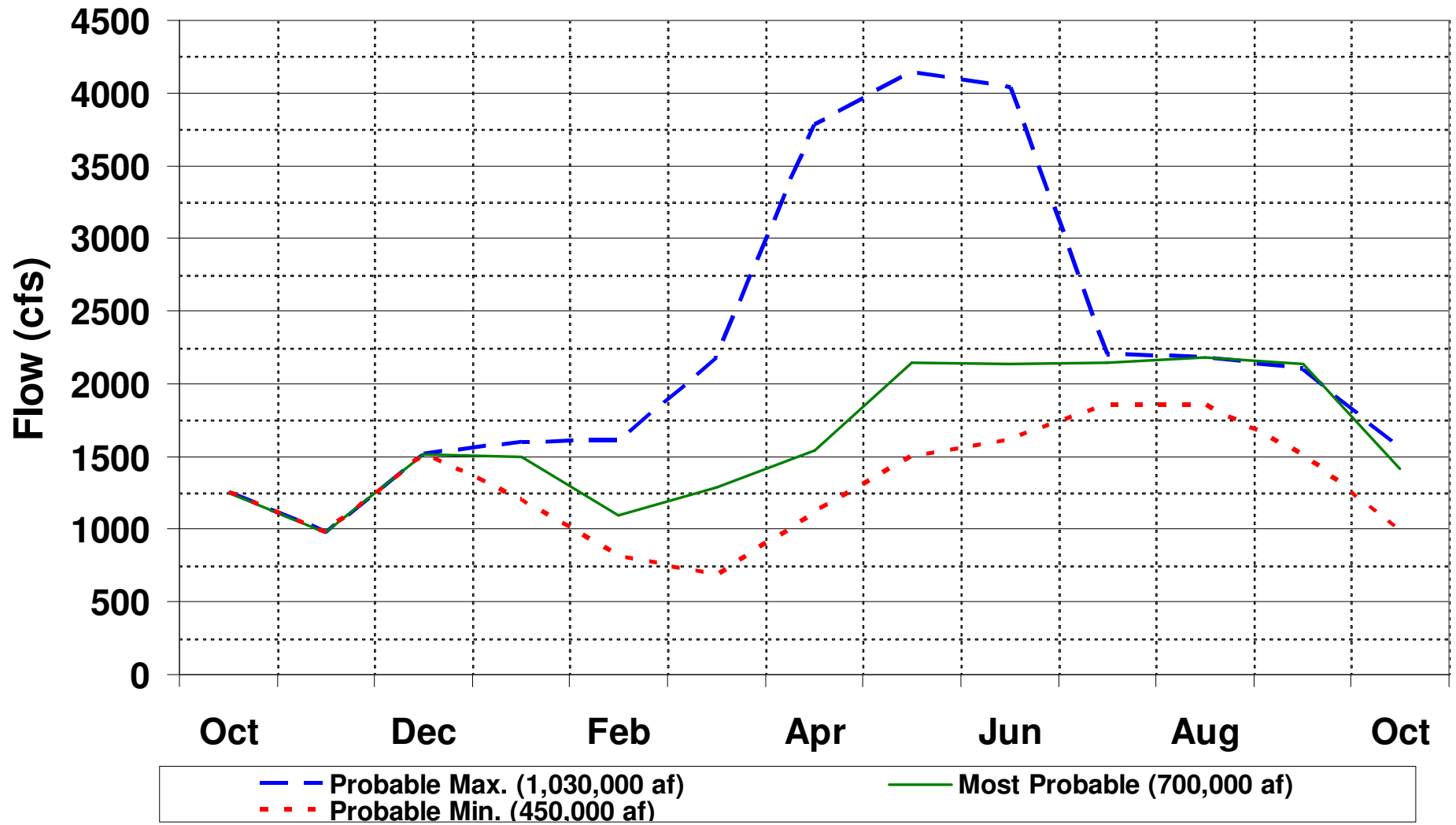


Blue Mesa Content

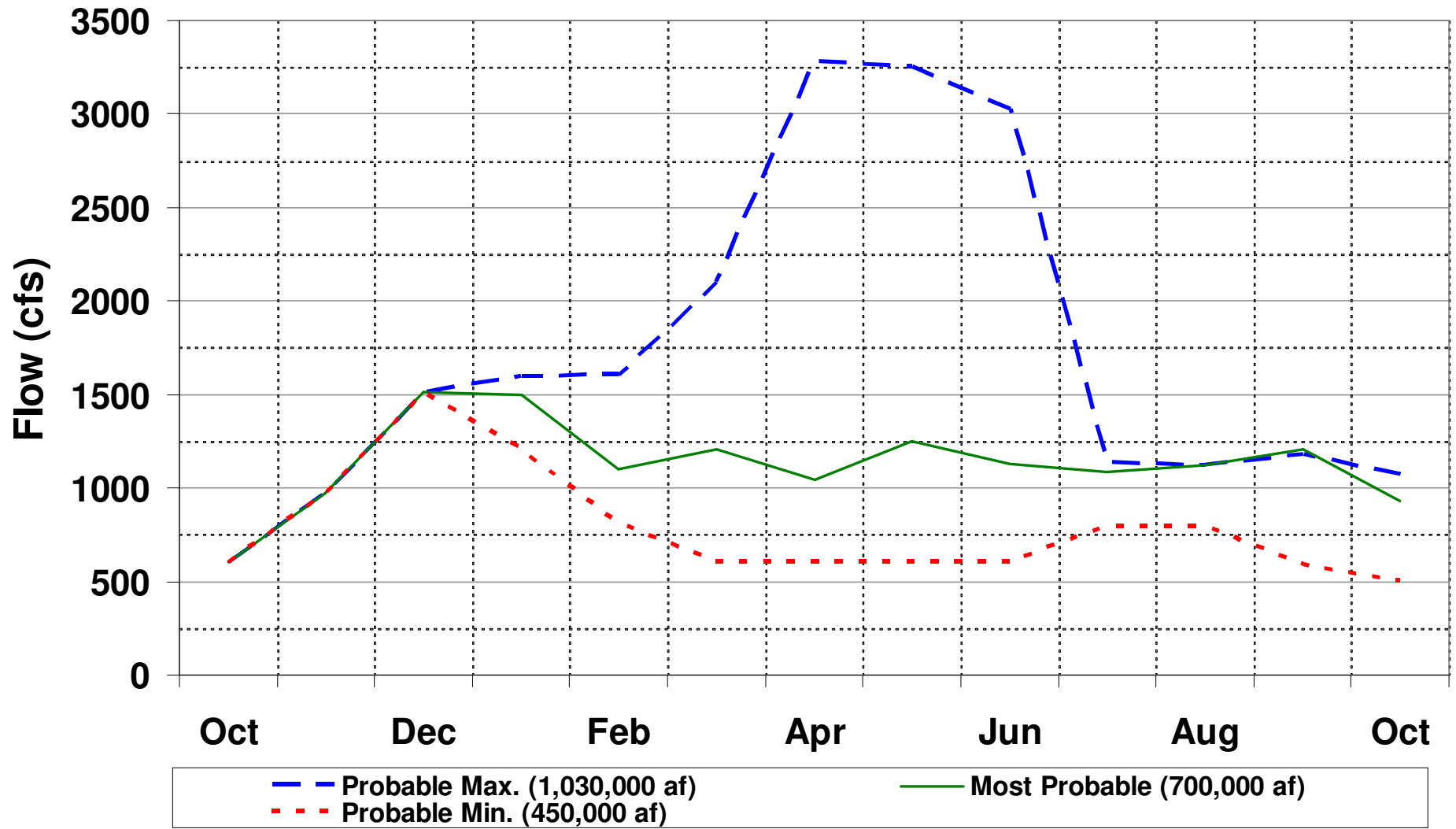
End of Month



Crystal Release Monthly Average



Black Canyon Monthly Average



Most Probable Monthly Average

