

**Federal
Aviation
Administration**

**Air
Carriers**

**FAA
Advisory
Circular**

**Freight
Forwarders**

Associations



Working Group Participants

FAA Advisory Circular

- § Federal Aviation Administration (FAA)
- § Associations
 - § Air Line Pilots Association (ALPA)
 - § Air Transport Association (ATA)
 - § Cargo Airline Association (CAA)
 - § Independent Pilot Association (IPA)
 - § National Air Carrier Association (NACA)
 - § Regional Airline Association (RAA)



Working Group Participants

FAA Advisory Circular

- § Air Carriers:
 - § ABX Air
 - § Air Transport International
 - § Alaska Air
 - § Aloha Airlines
 - § America West
 - § American Airlines
 - § ATA Airlines
 - § Atlas Air
 - § Capital Cargo International Airlines
 - § Champion Air
 - § Continental Airlines



Working Group Participants

FAA Advisory Circular

- § Air Carriers:
 - § Delta Air Lines
 - § Empire Airlines
 - § Evergreen International Airlines
 - § Falcon Air Express
 - § FedEx Express
 - § Gemini Air Cargo
 - § Hawaiian Airlines
 - § Horizon Air
 - § Mesaba
 - § Miami Air
 - § Midway
 - § Midwest Express
 - § North American Airlines



Working Group Participants

FAA Advisory Circular

- § Air Carriers:
 - § Northwest Airlines
 - § Polar Air Cargo
 - § Ryan International Airlines
 - § United Airlines
 - § United Parcel Service
 - § US Air
 - § World Airways
- § Freight Forwarders:
 - § BAX Global
 - § Menlo Worldwide



Who Should Use This Advisory Circular?

FAA Advisory Circular

- § Air carriers
- § Contractors, vendors, & customers
- § Repair facilities & manufacturers



1. Weight & Balance Procedures

- § Aircraft manufacturer's weight & balance manual
- § Supplemental type certificate or other FAA provided data



1. Weight & Balance Procedures

FAA Advisory Circular

- § Aircraft weighing procedures
- § Aircraft operating weight limits
- § Cargo weight limits
- § Center of gravity range limits
- § Fuel loading data
- § Cargo weighing, cargo buildup, & aircraft loading procedures
- § Weight & balance processes, tables, forms, & manifests
- § Procedures for supernumeraries



2. Cargo Handling System, Smoke Barriers, & Installed Nets

FAA Advisory Circular

- § Cargo handling system
- § Smoke barrier & 9G net or bulkhead
- § Installed nets









2. Cargo Handling System, Smoke Barriers, & Installed Nets

FAA Advisory Circular

- § Inspection & repair
- § Receiving inspection & documentation
- § Substitution of components
- § Minimum equipment list

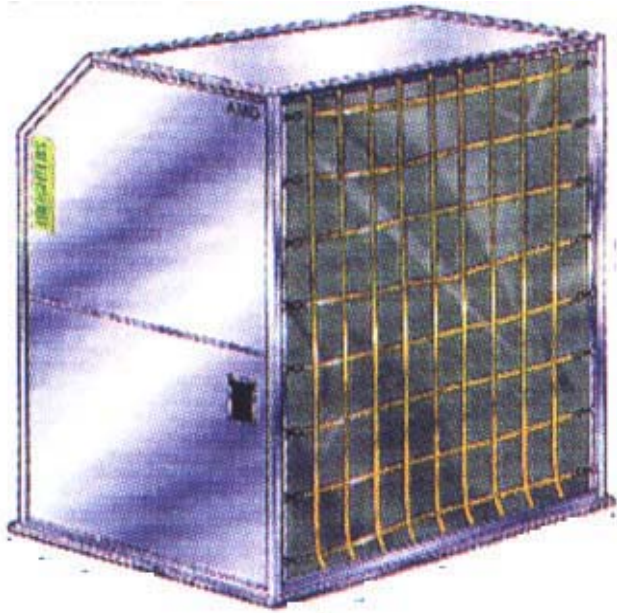
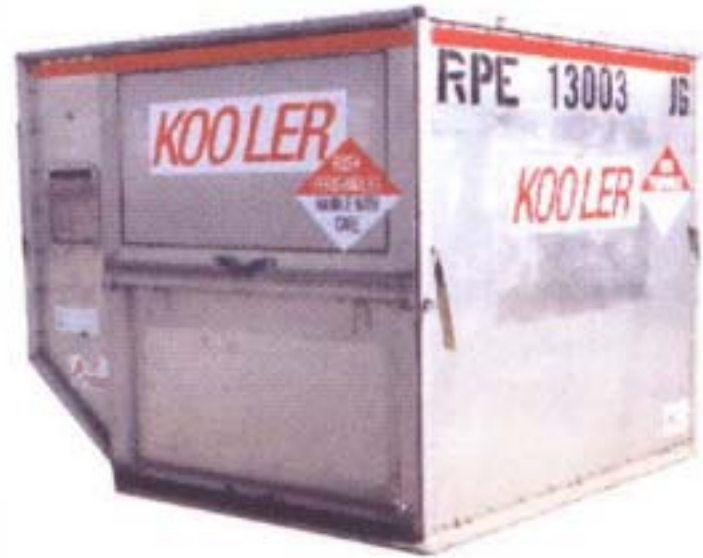


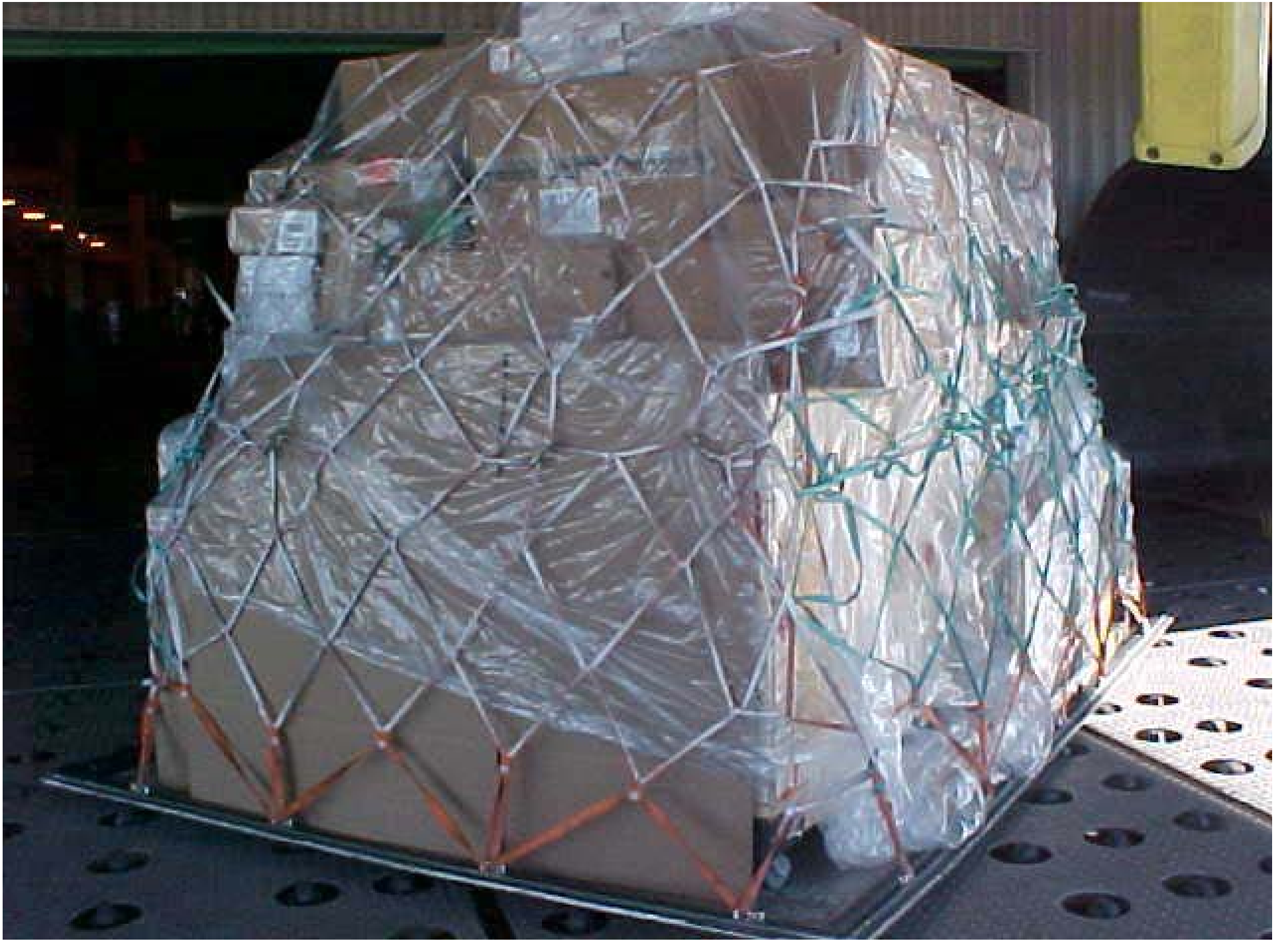
3. Airworthiness, Serviceability, & Maintenance of Unit Load Devices & Other Restraint Devices

FAA Advisory Circular

AIRWORTHINESS

- § Authorization & Compatibility
- § Containers
- § Pallet & net combination
- § Other cargo restraints











3. Airworthiness, Serviceability, & Maintenance of Unit Load Devices & Other Restraint Devices

FAA Advisory Circular

AIRWORTHINESS

- § Receiving acceptance checks
- § Visual Inspections
- § Maintenance manuals
- § Serviceability limits
- § Venting during changes in air pressure
- § Approved parts
- § Spare part conformity certificates



3. Airworthiness, Serviceability, & Maintenance of Unit Load Devices & Other Restraint Devices

FAA Advisory Circular

MAINTENANCE

- § Maintenance & repair
- § FAA-certified airmen
- § Procedures
- § Maintenance records



3. Airworthiness, Serviceability, & Maintenance of Unit Load Devices & Other Restraint Devices

FAA Advisory Circular

DAMAGE LIMITS

- § Manufacturer developed damage limits
- § Air carrier developed damage limits
- § Standardization of damage limits



3. Airworthiness, Serviceability, & Maintenance of Unit Load Devices & Other Restraint Devices

FAA Advisory Circular

SERVICIBILITY

- § Operational acceptance checks
- § Frequency
- § Marking & identification
- § Trained, qualified, & authorized personnel



4. Cargo Weigh Scales

FAA Advisory Circular

- § Accurate cargo weights
- § Scale inspections & calibrations
- § Functionality checks
- § Equipment tare weights





5. Cargo Restraint & Aircraft Loading & Unloading

FAA Advisory Circular

CARGO RESTRAINT

- § Cargo buildup
- § Authorized unit load devices
- § Authorized other cargo restraints



5. Cargo Restraint & Aircraft Loading & Unloading

FAA Advisory Circular

CARGO RESTRAINT

- § Center of gravity limits
- § Methods to prevent cargo from shifting within a unit load device
- § Weight limits for unit load devices & other cargo restraints
- § Contour dimensions for palletized cargo
- § Weight distribution methods
- § Methods for restraining special cargo loads

















5. Cargo Restraint & Aircraft Loading & Unloading

FAA Advisory Circular

AIRCRAFT LOADING & UNLOADING

- § Cargo handling system
- § Installed nets
- § Flight crew access aisles
- § Cargo door sill guards
- § Tail tipping avoidance





FEB 28 2004



5. Cargo Restraint & Aircraft Loading & Unloading

FAA Advisory Circular

AIRCRAFT LOADING & UNLOADING

- § Center of gravity range limits
- § Weight limits
- § Processes, tables, forms & manifests



6. Load Supervision, Load Verification, & Air Carrier Audits

LOAD SUPERVISION & LOAD VERIFICATION

- § Cargo buildup
- § Unit load devices & other cargo restraints
- § Aircraft loading & unloading
- § Weight and balance processes, forms, tables, & manifests
- § Damaged, missing, or inoperative aircraft components



6. Load Supervision, Load Verification, & Air Carrier Audits

FAA Advisory Circular

AIR CARRIER AUDITS

- § Acceptable to the FAA
- § Sufficient scope
- § Frequency



7. Training

FAA Advisory Circular

- § Cargo buildup personnel
- § Aircraft loading personnel
- § Load supervisors
- § Weight & balance personnel
- § Maintenance personnel
- § Flight crewmembers
- § Dispatchers
- § Purchasing & receiving personnel



7. Training

FAA Advisory Circular

- § Curriculum
- § Recurrent training requirements & intervals
- § Authorized delivery methods
- § Personnel authorized to deliver training
- § Training records



**Federal Aviation
Administration**

**Air Cargo
Industry + Labor**



**WORKING TOGETHER TO IMPROVE
FLIGHT SAFETY AND STANDARDIZATION**