

**Key to Features**

- SCA Property Line
- Property Line "Other"

**Sample Media Symbols**

- Leachate
- Sediment
- Upland Soil
- Wetland Soil
- Subsurface Soil
- Surface Water
- Waste

**WORKING COPY**

Notes:

- The base set of data used in this figure includes the "useable data" cited in Figure 6. The sample locations shown on this figure include data for which there is validation information, as well as data that has effective detection limits that are less than the preliminary DCGL restricted use, excluding fission products (Sr-90 and Cs-137).
- Background values are from the December 2002 background sampling event conducted by RMT.

NO.	BY	DATE	REVISION	APP'D

PROJECT: HARTLEY & HARTLEY LANDFILL  
BAY COUNTY, MICHIGAN

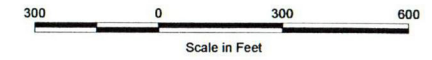
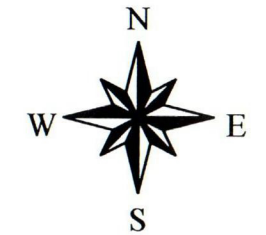
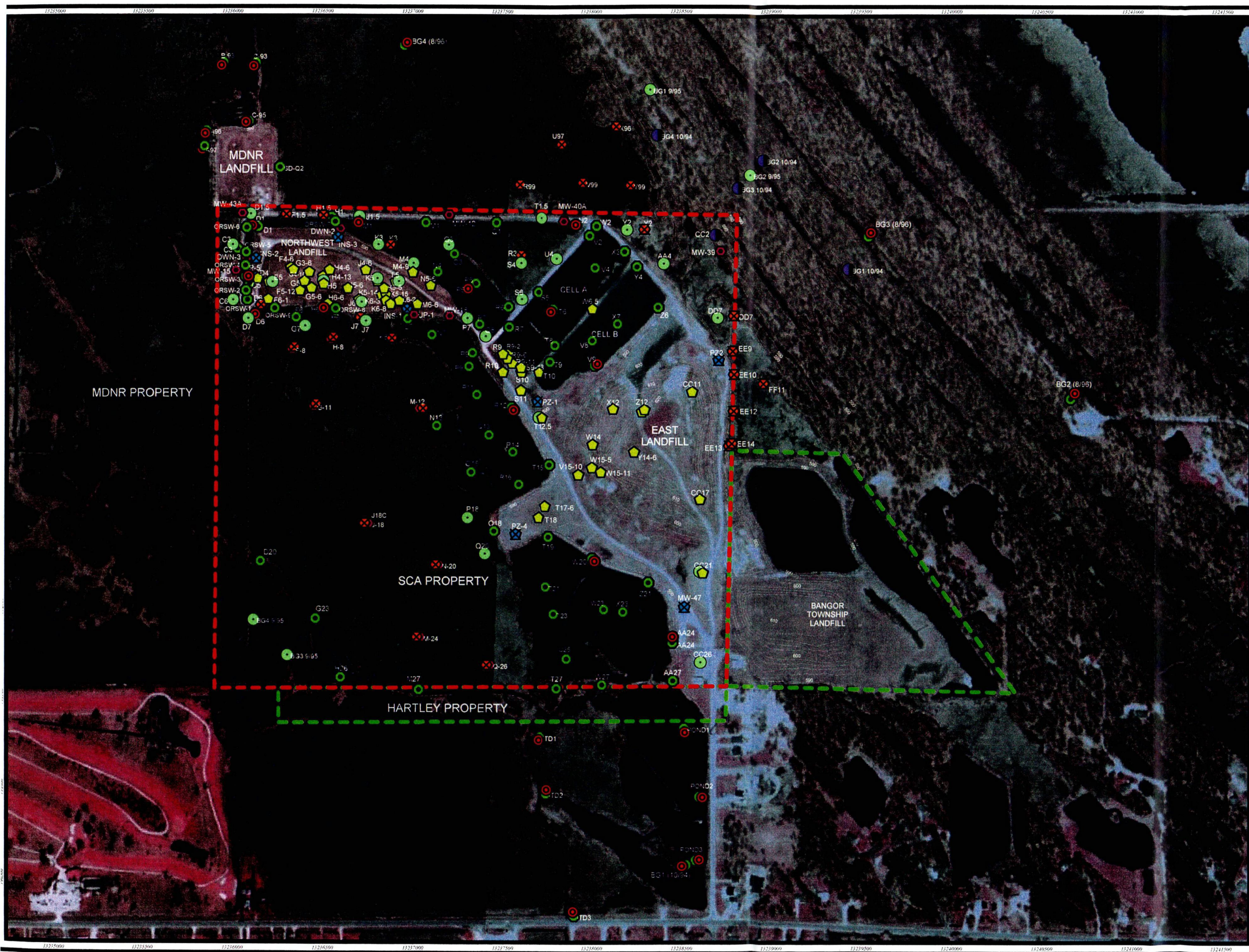
FIGURE 4  
Historical Samples Exceeding the 95% UCL above Mean Background Levels  
U.S.G.S. DIGITAL ORTHO PHOTO BASEMAP

DRAWN BY: S S Wilson	SCALE AS NOTED	PROJECT NO.: 00-08115.11
CHECKED BY: J Weckend	FILE NO.: M_Nat_sampla.apr	
APPROVED BY: G McLinn	DATE PRINTED:	
DATE: APRIL 2003		

**RMT**

744 Heartland Trail  
Madison, WI 53717-1104  
(608) 831-4444

COL4



**Key to Features**

- - - SCA Property Line
- - - Property Line "Other"

**Sample Media Symbols**

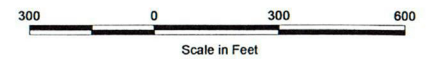
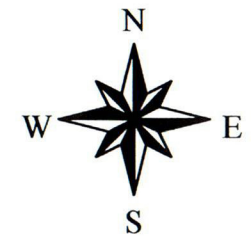
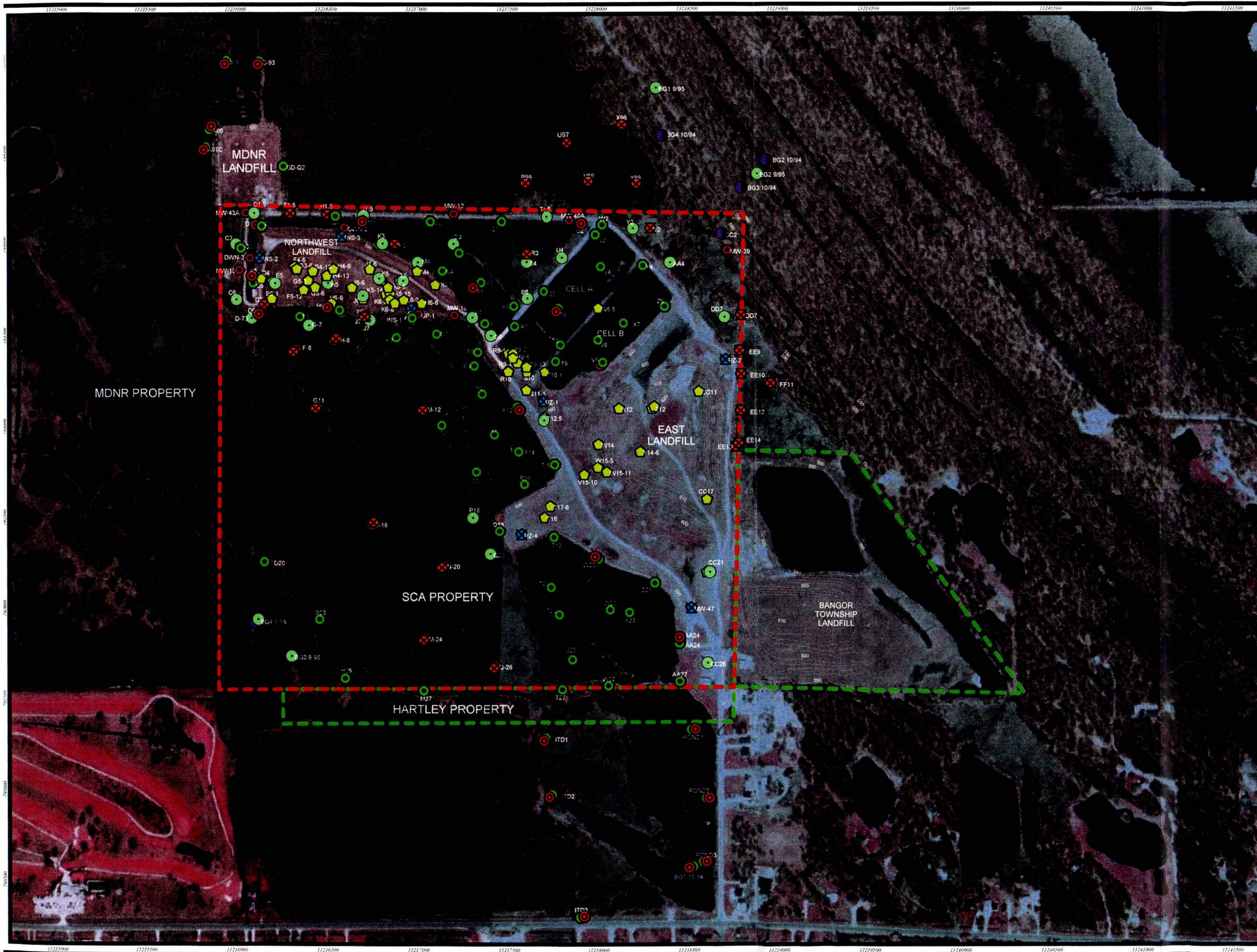
- Groundwater
- Leachate
- Sediment
- Upland Soil
- Wetland Soil
- Subsurface Soil
- Surface Water
- ⬠ Waste

Notes:  
 1. Sample locations shown on this figure include all locations where radiological samples were collected, except the data from the ORAU sampling event in 1984, where there was no validation information. The ORAU samples were concentrated in the area of the Northwest Landfill.

**WORKING COPY**

NO.	BY	DATE	REVISION	APPD.
PROJECT : HARTLEY & HARTLEY LANDFILL BAY COUNTY, MICHIGAN				
FIGURE 5 HISTORICAL SAMPLING LOCATIONS U.S.G.S. DIGITAL ORTHO PHOTO BASEMAP				
DRAWN BY:	S S Wilson	SCALE AS NOTED	PROJECT NO.	00-06115.11
CHECKED BY:	J Wiedekind	FILE NO.	70_hst_samps.apr	
APPROVED BY:	G McLean	DATE PRINTED:		
DATE:	APRIL 2003			
		744 Heartland Trail Madison, WI 53717-1934 (608) 831-4444		

C05



**Key to Features**

- SCA Property Line
- Property Line "Other"

**Sample Media Symbols**

- Groundwater
- Leachate
- Sediment
- Upland Soil
- Wetland Soil
- Subsurface Soil
- Surface Water
- Waste

Notes:  
 1. The sample locations shown on this figure include data for which there is validation information, as well as data that has effective detection limits that are less than the preliminary DOGL (restricted use, excluding fission products [Sr-90 and Cs-137]).

**WORKING COPY**

3			
2			
1			
NO.	BY	DATE	REVISION
PROJECT: HARTLEY & HARTLEY LANDFILL BAY COUNTY, MICHIGAN			
FIGURE 6 USEABLE HISTORICAL DATA U.S.G.S. DIGITAL ORTHO PHOTOMAP			
DRAWN BY:	S S Wilson	SCALE AS NOTED	PROJECT NO.: 00-06115.11
CHECKED BY:	J Weikand	DATE PRINTED:	FILE NO.: M_hal_samps.apr
APPROVED BY:	G McLine		
DATE:	APRIL 2003		
		744 Heartland Trail Madison, WI 53717-1924 (608) 831-4444	

col6