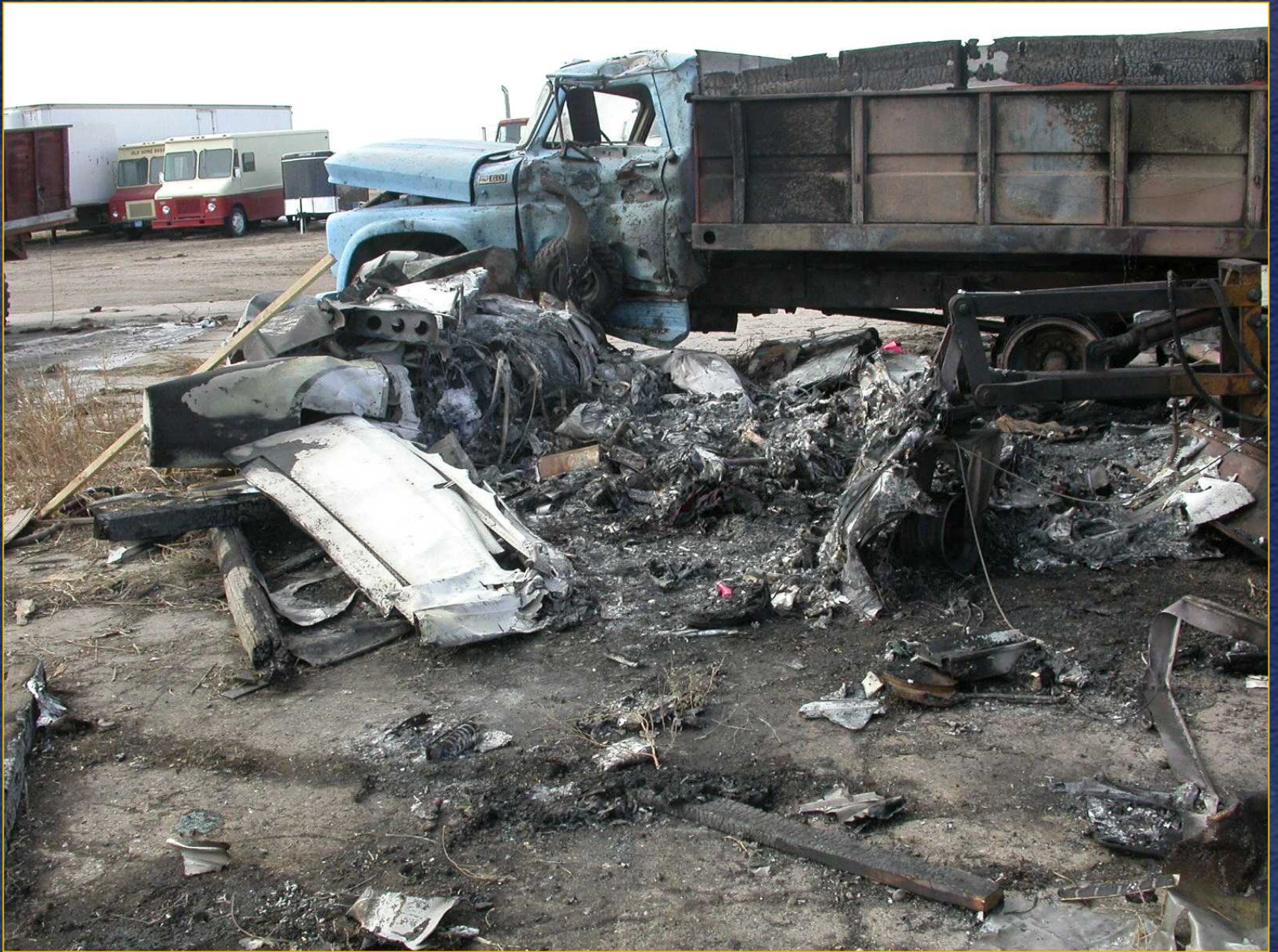




NTSB National Transportation Safety Board

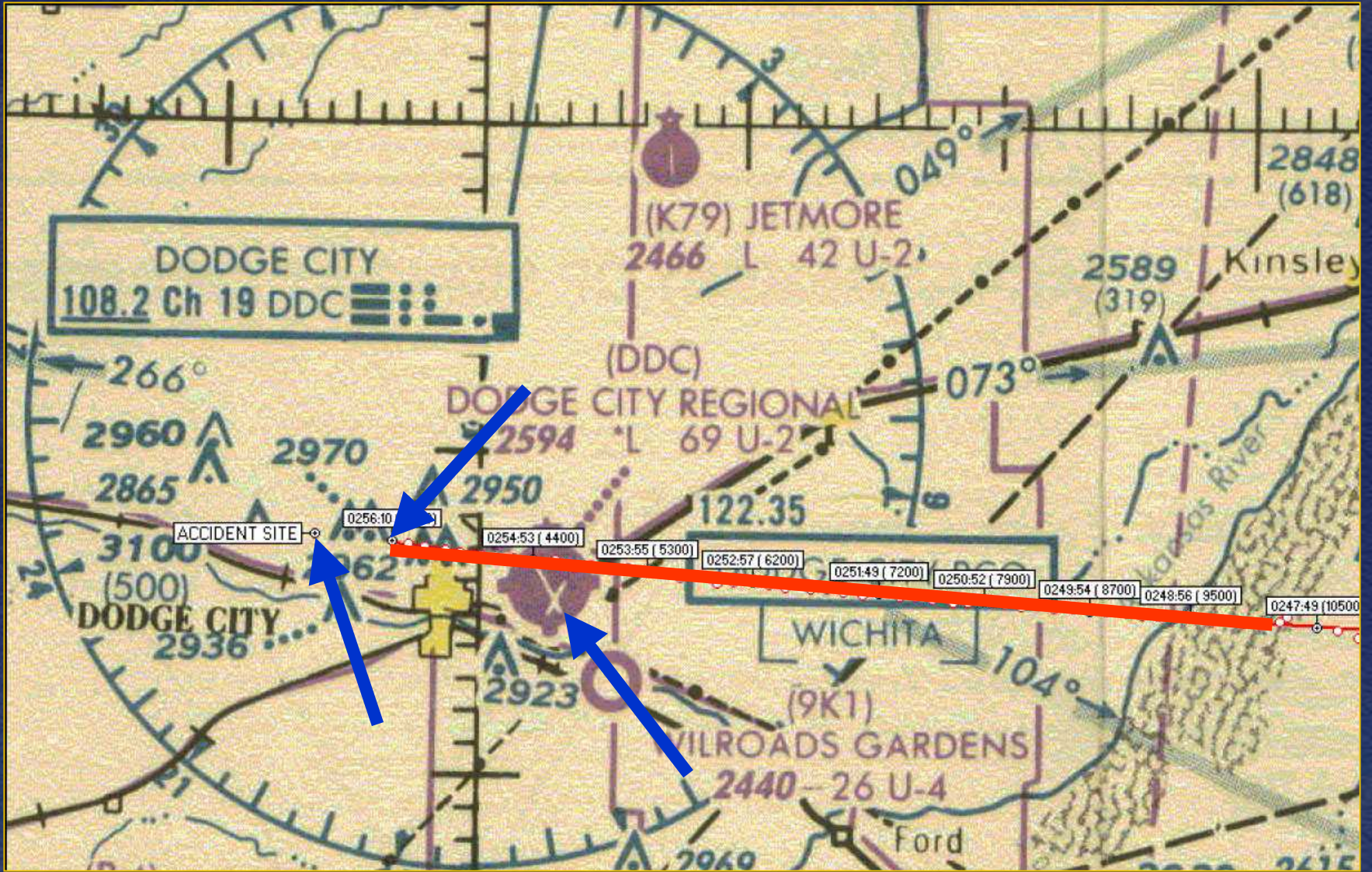
Office of Aviation Safety

Dodge City, Kansas
February 17, 2004



Flight Path

- Part 91 positioning flight
- Departed Wichita, Kansas about 0215
- Instrument flight rules cancelled about 34 miles east of Dodge City
- Proceeded under visual flight rules



72-Hour History

- Off-duty February 10 to 15
- February 14 asleep at midnight
- February 15
 - Awoke at 0830
 - Worked 1700 to 2200
 - Asleep at 2300
- February 16
 - Awake at 0600
 - Commuted to Dodge City
 - At work at 1225

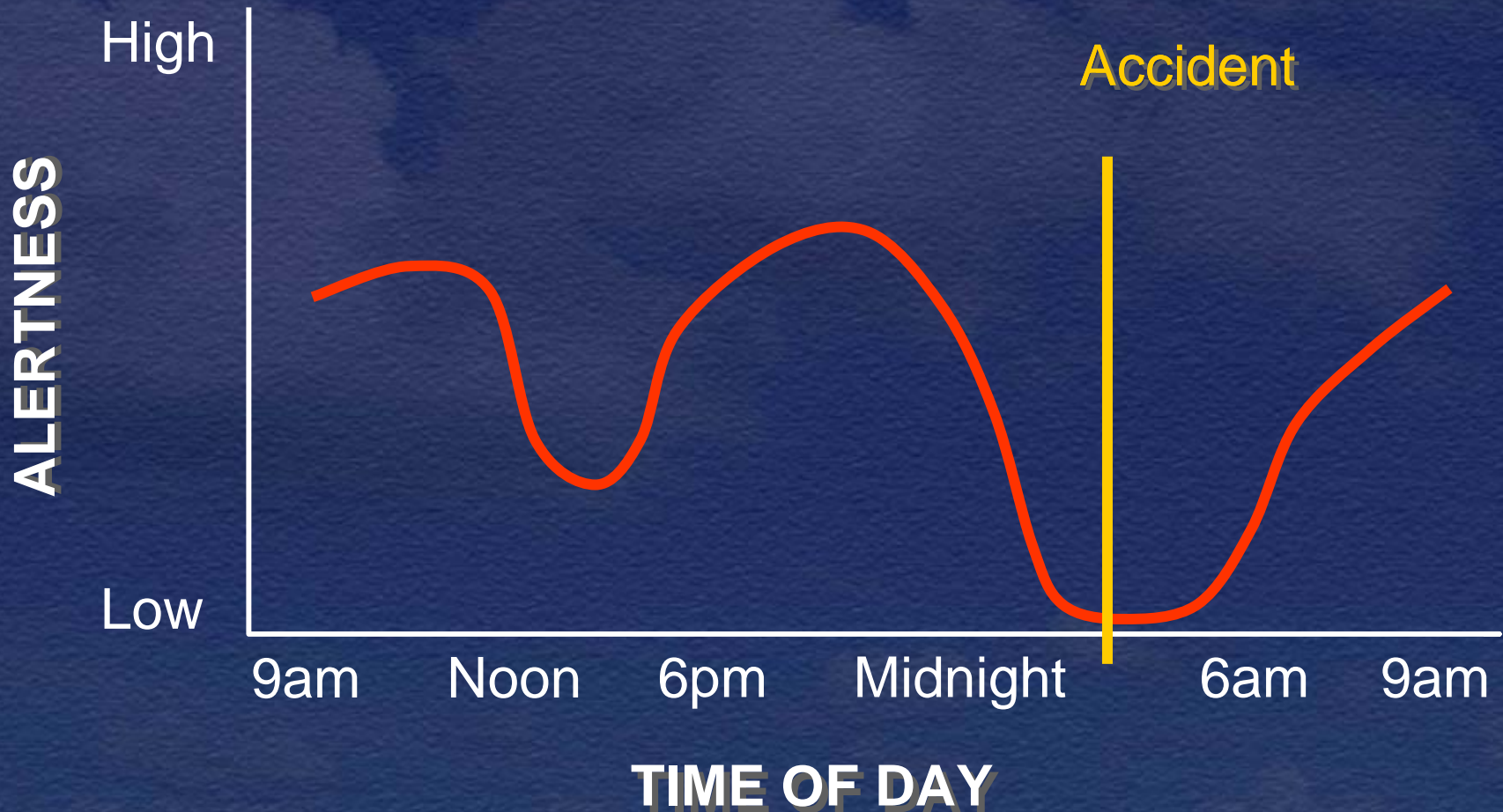
Flight Schedule

<u>FLIGHT</u>	<u>PART 135/91</u>	<u>T/O TIME</u>	<u>LDG TIME</u>	<u>HH/MM</u>
Dodge City to Lamar	91	14:26	15:04	0:38
Lamar to Pueblo	135	16:28	16:54	0:26
Pueblo to Dodge City	91	18:16	19:19	1:03
Dodge City to Jabarra Airport	135	21:37	22:15	0:38
Jabarra Airport to Independence	91	22:58	23:39	0:41
Independence to Wichita	135	0:29	1:02	0:33
Wichita to Dodge City	91	2:15	2:56	0:41
Total Flight Time				4:40

Pilot's Schedule

- 14 hours 33 minutes since reporting to work
- 20 hours 58 minutes since waking from sleep

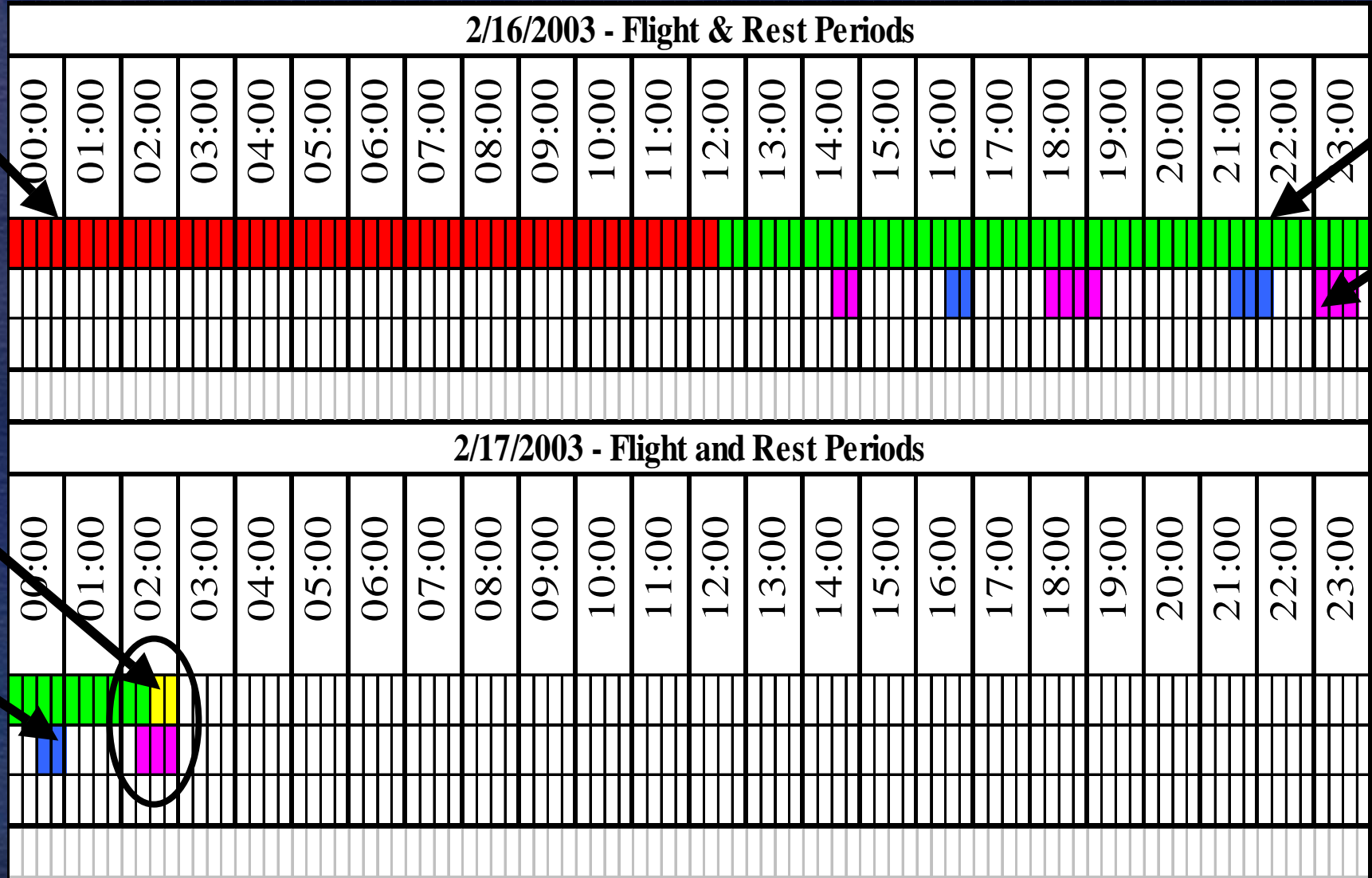
Fatigue: Time of Day



Rest and Duty Time

- Part 135 requirements
 - 10 hour rest
 - 14 hour duty time
- Part 135 rest period begins 0225

Rest and Duty Time



Other Safety Issues

No Terrain Awareness and Warning System



NTSB