



# ANIMAL CARE AND WELFARE, SPCA

"... in behalf of those who cannot speak for themselves but depend on honorable men and women for kindness, mercy and justice"

POST OFFICE BOX 8257 • PITTSBURGH, PA 15218 • (412) 244-1372 • HOURS TO 5:30 p.m. DAILY



2496 '00 DEC 28 P3:30

EDWARD J. BLOTZER, JR.  
Chief Humane Society Police Officer

U. S. FOOD AND DRUG ADMINISTRATION  
Dockets Management Branch  
5630 Fishers Lane, Room 1061  
Rockville MARYLAND 20852

Friends: Christmas Day, 2000

Last year, the USDA announced a landmark policy to stop purchasing meat from downed cows for Federal programs, including the National School Lunch Program. Congratulations!!

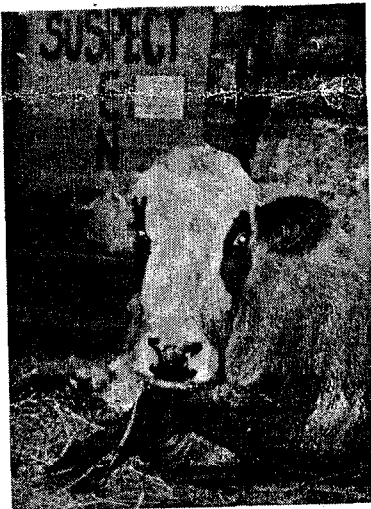
The Agency stated: " USDA will no longer accept ground beef that includes product from non-ambulatory cattle, commonly known as "downers" ... this shows a growing consensus in this country == even among livestock industry and government officials .. that the marketing and slaughter of downed animals is UNACCEPTABLE.

We ask you to completely prohibit the slaughter of downed animals. This program has been 'on the calendar' for past few years, and now seems a good time to act on this issue.

x

Humanely and Sincerely,

EDWARD J. BLOTZER, JR., President  
Chief SPCA Officer (since 1970).



98P-0151

C 3252

- \* Animals who are too sick or injured even to stand should not be allowed to enter the human food chain.
- \* In addition to posing an increased risk for bacterial contamination, there is evidence that some downed animals may be afflicted with a form of BSE (Bovine Spongiform Encephalopathy or "Mad Cow Disease"), a disease which has been linked to a fatal human illness (CJD or Creutzfeldt-Jakob Disease).
- \* It is impossible to move downed animals humanely, and they are typically pushed with tractors or dragged with chains — inhumane processes which cause injuries ranging from bruises and abrasions, to broken bones and torn ligaments.
- \* Downed animals comprise a very small percentage of animals slaughtered, and prohibiting their marketing will cause no undue economic hardship.
- \* Industry experts have estimated that 90% percent of downed animals can be prevented with better care and handling. Removing the market for downed animals will provide an incentive to industry to prevent downed animals in the first place.

*" Unless we have the courage to recognize cruelty for what it is — whether its victim is human or animal — we can not expect things to be much better in this world."  
- Rachel Carson*

---

## Wildlife Rescue Do's



- ◆ Do be a responsible pet owner. Keep cats indoors. Many baby birds and rabbits are orphaned or injured by cats. Keep dogs under control. Even the most innocent-looking canines run deer and terrorize wildlife.
- ◆ Do cut the rings on plastic six-pack holders before disposing of them. They can be deadly to wildlife.
- ◆ Do slow down when driving around corners in remote areas where most road kills occur. Drive slowly around road kills to allow carrion-eating animals to get out of the way.
- ◆ Do limit use of pesticides. A local conservation group or agricultural extension office can give you recipes for environmentally-friendly gardening and lawn care techniques.
- ◆ Do put covers on chimneys. Birds and mammals regularly become trapped in them and die.

---

## Wildlife Rescue Don'ts

- ◆ Don't touch raccoons and skunks! They can carry rabies and not show any signs of the disease. Call the Wildlife Center immediately.
- ◆ Don't assume young rabbits or deer fawns are orphaned when you see them alone. They are often left by their mothers during the day.
- ◆ Don't cut down dead trees unless absolutely necessary! Many species of animals consider them home. Always check a tree for nest cavities before you prune or cut it down. If you must remove it, wait until the fall or winter months.
- ◆ Don't leave monofilament line behind when fishing. Discarded line should be taken with you, and remove line that you find. Wild animals and birds can become entangled in the transparent line and die slowly and painfully.
- ◆ NEVER TRY TO KEEP A WILD ANIMAL AS A PET. They may seem cute and cuddly, but they will never adjust to life in captivity and will become extremely aggressive with age. Also, keeping wildlife is illegal under state and federal laws.

---

*Before making a rescue attempt, call us at 925-6862 or ~~455-7356~~. If you are unable to reach the Wildlife Center, use the following guidelines. Never drop off any animal at the wildlife centers when no one is there to admit it. These unattended animals may suffer from heat stroke or be taken by predators.*

## Mammal Rescue

- ◆ Handle all wildlife as little as possible. Keep wild creatures in a warm, quiet, dark place. Do not attempt to feed or water any wild species. More harm than good can come from feeding the wrong thing to an injured or infant wild animal.
  - ◆ Baby mammals cannot maintain their own body temperature and must be kept warm. Use a heating pad, set on "low" with several layers of toweling between the baby and the pad.
  - ◆ Use extreme caution when handling injured mammals! These animals may be suffering from pain and fear. They can inflict serious injury with teeth and claws. Gloves are ALWAYS a good idea!
-

**ANIMAL CARE & WELFARE/SPCA**  
POST OFFICE BOX 8257  
PITTSBURGH, PA 15218

ADDRESS CORRECTION REQUESTED  
FORWARDING & RETURN ADDRESS GUARANTEED



HAPPY  
"WHO-LID"  
from the  
U.S. Postal Service



H/A  
305

20857+0001

