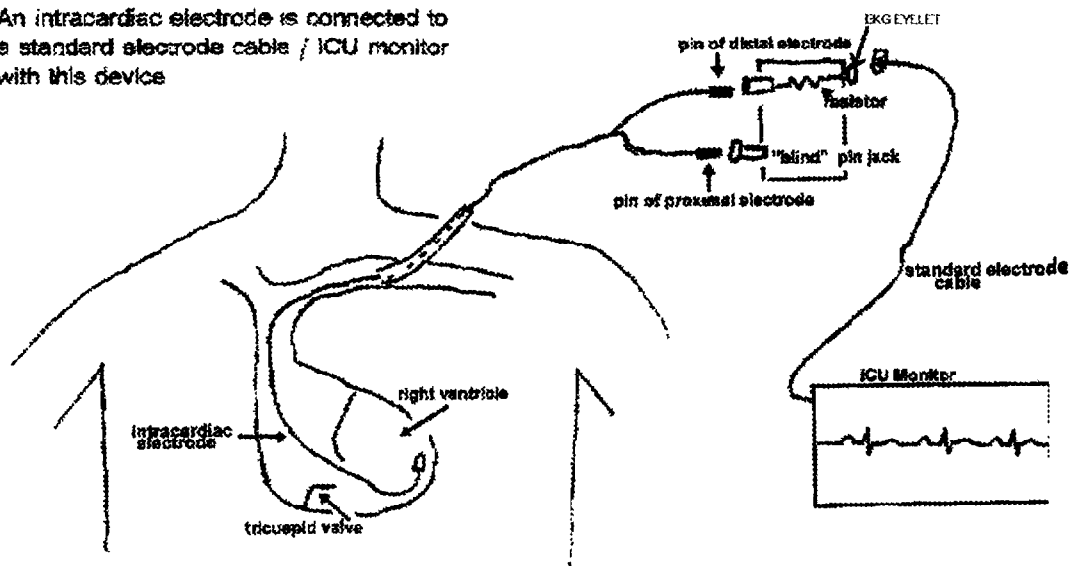


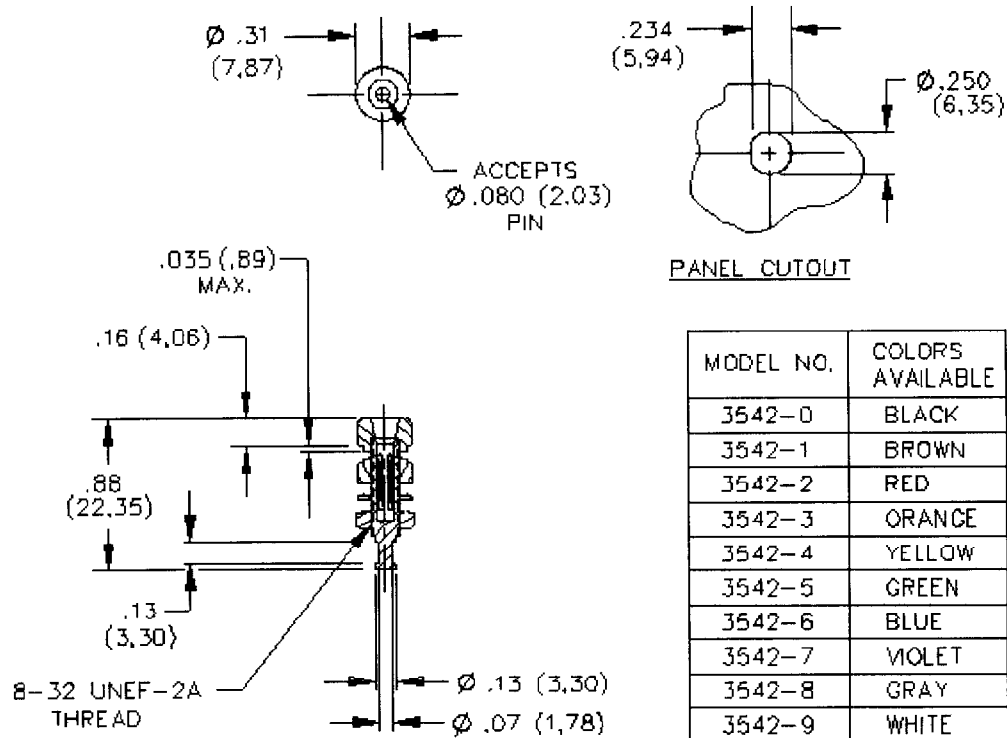
**FIGURE 1.**

## FIGURE 2.

An intracardiac electrode is connected to a standard electrode cable / ICU monitor with this device



## Model 3542 Insulated Pin Tip Jack



### FEATURES:

- Accepts .080 pin tip plugs
- Mounts in panels up to .250" thick.

### MATERIAL:

Insulation – Polycarbonate - Molded to pin tip jack body  
 Lockwasher, #8 Internal Tooth – Steel - Nickel plated  
 Hex Nut, #8-32 – Brass – Nickel plated  
 Pin Tip Jack Body: Brass – Gold plated

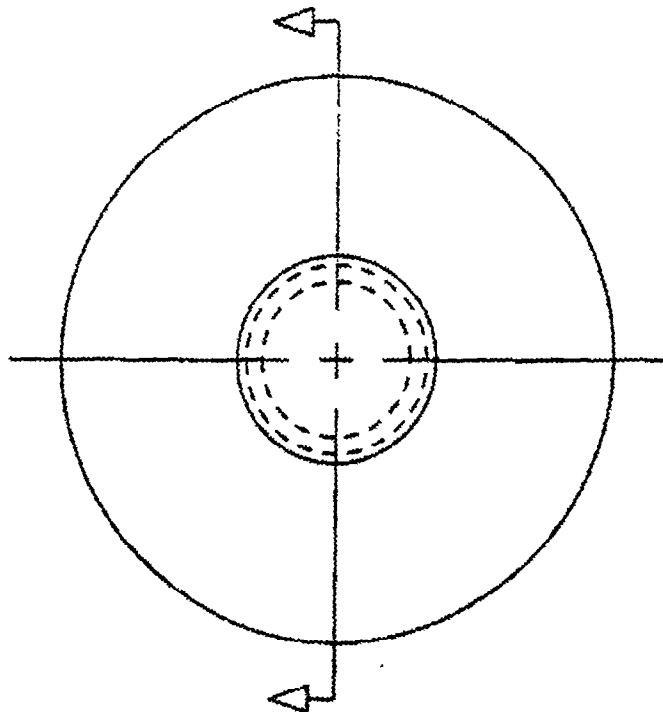
### RATINGS:

Operating Temperature: +115°C. (+239°F.) Max.  
 Operating Voltage: 1500 VDC  
 Current: 5 Amperes.

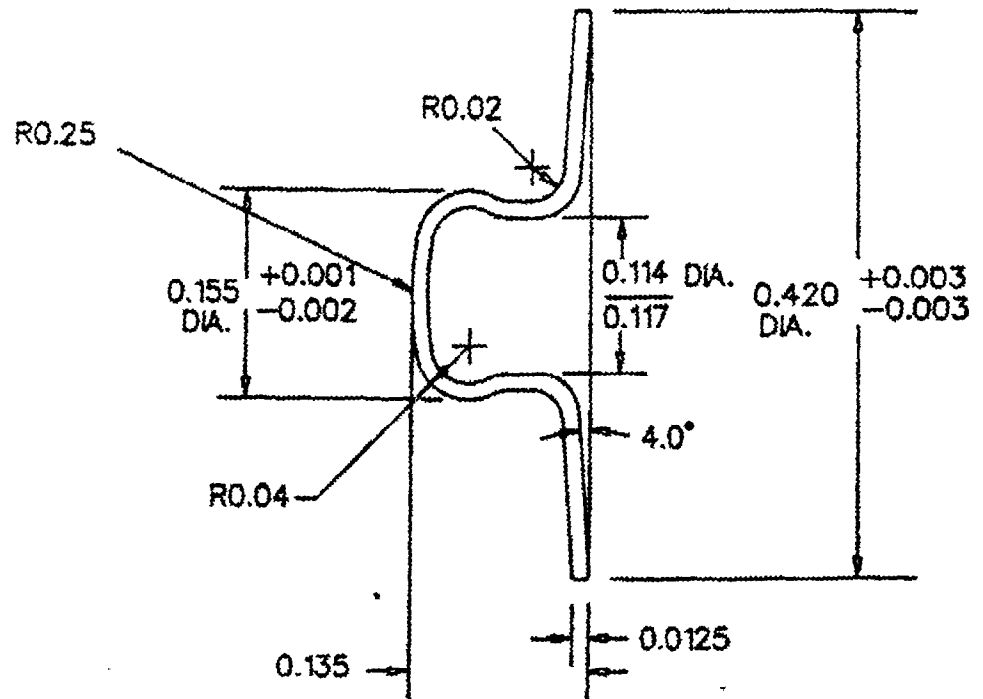
### ORDERING INFORMATION: Model 3542-\*


\*=Color Code – See Tabulation Block  
 Sold in packages of 10

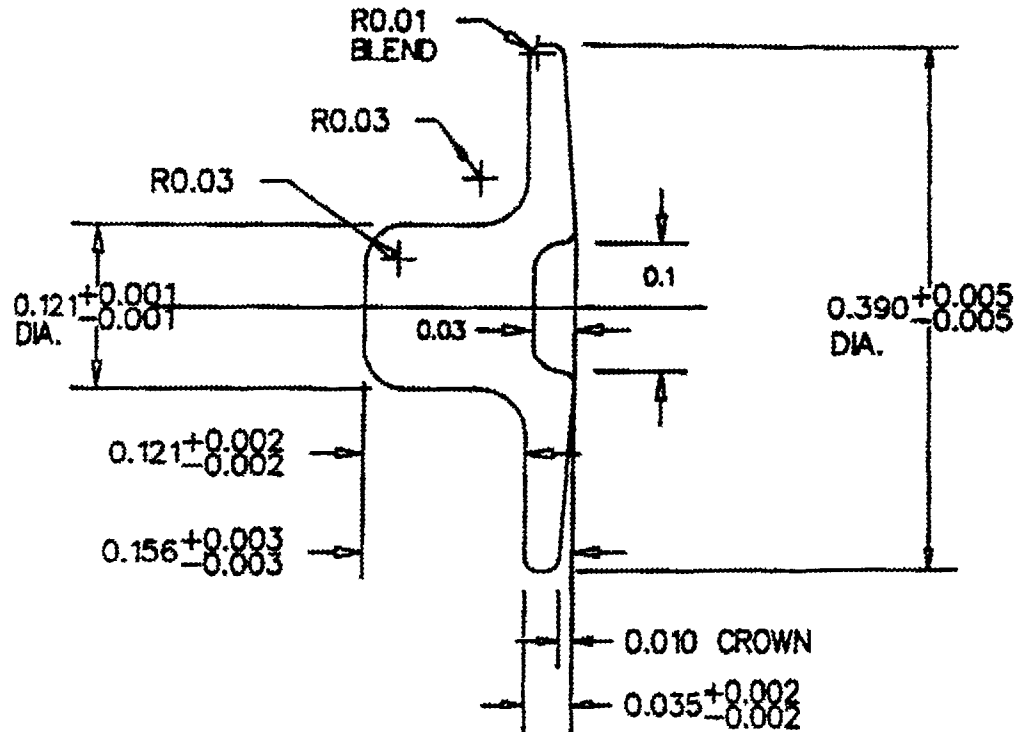
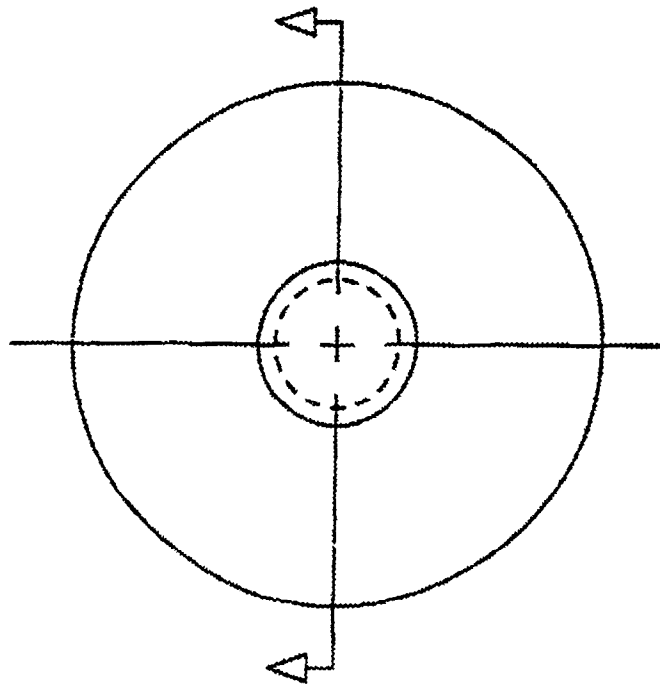
All dimensions are in inches. Tolerances (except noted) xx = ± .02" (.51 mm), xxx = ± .005" (.127 mm)  
 All specifications are to the latest revisions. Specifications are subject to change without notice.  
 Registered trademarks are the property of their respective companies. Made in USA




NOTE:  
ALL DIAMETERS MUST BE CONCENTRIC  
TO WITHIN .003".



<b>TOLERANCE</b> DECIMAL XXX +/- .005" XX +/- .010" X +/- .020" UNLESS OTHERWISE SPECIFIED ALL DIMENSIONS SHOWN IN INCHES FRACTION +/- 1/32" ANGULAR +/- 1°	 <b>SELECT ENGINEERING INC.</b> 280 LUNENBURG STREET FITCHBURG, MA 01420 TEL. 978-345-4500 / 978-345-4400 FAX. 978-345-8030	<b>MATERIALS:</b> TYPE 316L STAINLESS STEEL	<b>Revision Record</b>																			
			<table border="1"> <thead> <tr> <th>Date</th> <th>Rev.</th> <th>Initials</th> <th>Descript</th> </tr> </thead> <tbody> <tr><td> </td><td> </td><td> </td><td> </td></tr> <tr><td> </td><td> </td><td> </td><td> </td></tr> <tr><td> </td><td> </td><td> </td><td> </td></tr> <tr><td> </td><td> </td><td> </td><td> </td></tr> </tbody> </table>	Date	Rev.	Initials	Descript															
Date	Rev.	Initials	Descript																			
<b>PROPRIETARY AND CONFIDENTIAL</b> THIS DOCUMENT AND THE INFORMATION IT CONTAINS ARE THE PROPERTY OF SELECT ENGINEERING, INC. AND ARE TO BE ACCEPTED ONLY WITH THE UNDERSTANDING THAT IT IS TO BE KEPT CONFIDENTIAL AND NOT TO BE DISCLOSED WITHOUT THE PRIOR CONSENT OF SELECT ENGINEERING, INC.		<b>DRAWN BY / DATE</b> SRA 11/22/94	<b>TITLE:</b> STAINLESS STEEL SNAP		<b>SCALE 7:1</b>																	
<b>APPROVED BY / DATE</b> SRA 11/22/94		<b>DRAWING / PART NUMBER</b> S-9000/SS		<b>RFV A</b>																		



NOTE:  
ALL DIAMETERS MUST BE CONCENTRIC  
TO WITHIN .003".

<b>TOLERANCE</b> DECIMAL .00X +/- .005" .01X +/- .010" .X +/- .030"	UNLESS OTHERWISE SPECIFIED ALL DIMENSIONS SHOWN IN INCHES FRACTION +/- 1/32" ANGULAR +/- 1°	 <b>SELECT ENGINEERING INC.</b> 260 LUNENBURG STREET FITCHBURG, MA 01420 TEL. 800-971-4500 / 978-345-4400 FAX. 978-345-6030	<b>MATERIALS:</b> MOLDED OF 20% GLASS FILLED ABS AND SILVER/SILVER CHLORIDE COATED TO A 0.075 ML THICKNESS SPECIFICATION.	<b>Revision Record</b>																				
				<table border="1"> <thead> <tr> <th>Date</th> <th>Rev.</th> <th>Initials</th> <th>Discript</th> </tr> </thead> <tbody> <tr> <td>12/10/98</td> <td>A</td> <td>SRA</td> <td>Revisi Discript.</td> </tr> <tr> <td> </td> <td> </td> <td> </td> <td> </td> </tr> <tr> <td> </td> <td> </td> <td> </td> <td> </td> </tr> <tr> <td> </td> <td> </td> <td> </td> <td> </td> </tr> </tbody> </table>	Date	Rev.	Initials	Discript	12/10/98	A	SRA	Revisi Discript.												
Date	Rev.	Initials	Discript																					
12/10/98	A	SRA	Revisi Discript.																					
<b>PROPRIETARY AND CONFIDENTIAL</b>  THIS DOCUMENT AND THE INFORMATION IT CONTAINS ARE THE PROPERTY OF SELECT ENGINEERING, INC. AND ARE TO BE ACCEPTED ONLY WITH THE UNDERSTANDING THAT IT IS TO BE KEPT CONFIDENTIAL AND NOT TO BE DISCLOSED WITHOUT THE PRIOR CONSENT OF SELECT ENGINEERING, INC.		<b>DRAWN BY / DATE</b> SRA 07/17/95	<b>TITLE:</b> AG/AGCL EYELET		<b>SCALE</b> 7:1																			
		<b>APPROVED BY / DATE</b> SRA 07/17/95	<b>DRAWING / PART NUMBER</b> S-9001/0.075		<b>REV.</b> A																			

ALL DIMENSIONS SHOWN ARE AS MOLDED AND SUBJECT TO PROCESS VARIATIONS.