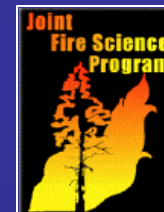


A Regional Experiment to Evaluate Effects of Fire and Fire Surrogate Treatments in the Sagebrush Biome



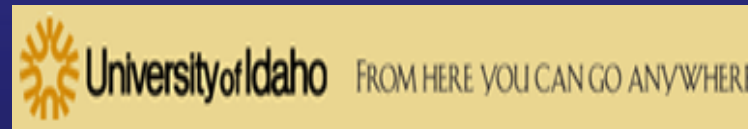
Ultimate goal:

Provide managers with tools to effectively restore “at risk” sagebrush communities in the Great Basin.



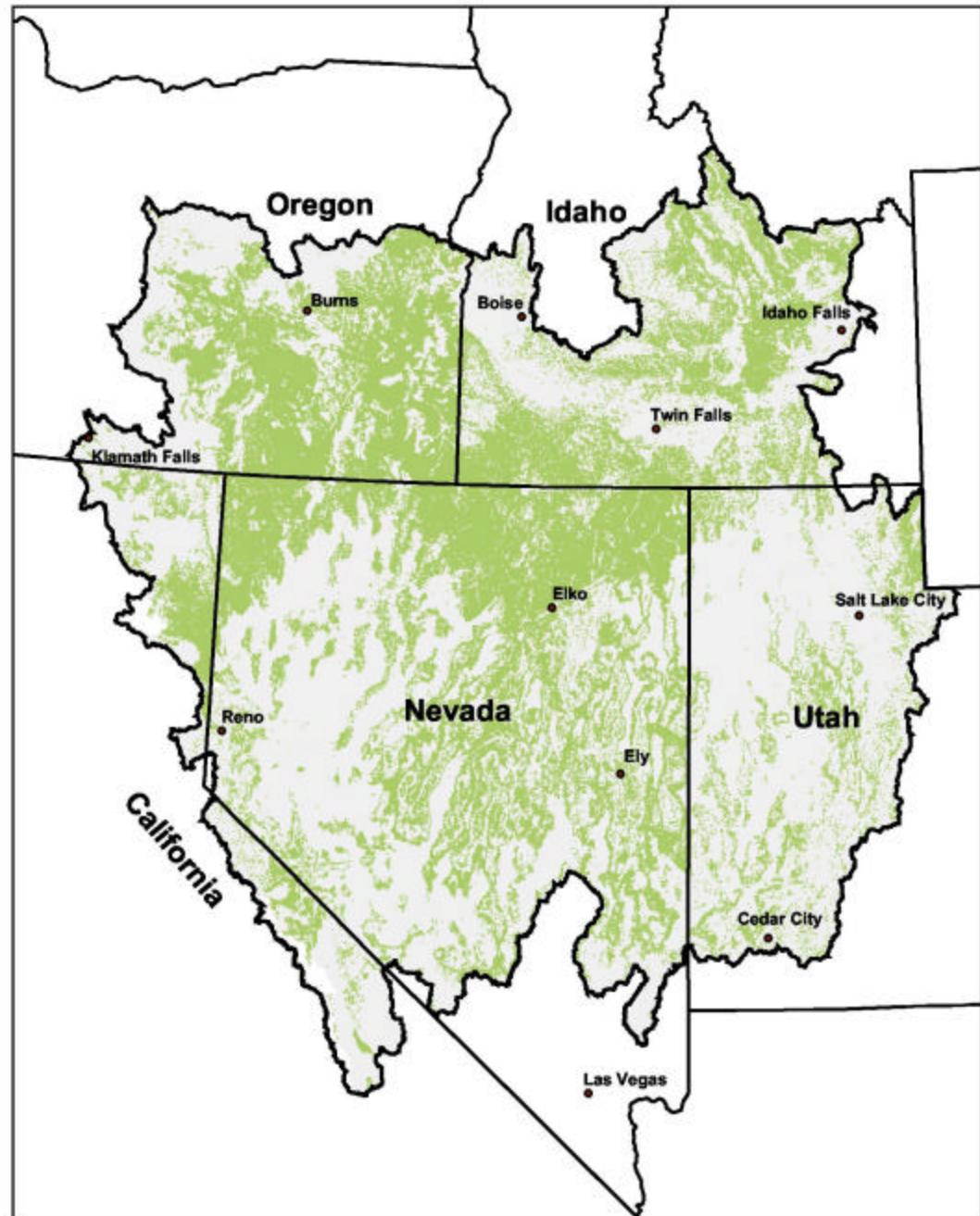


A collaborative research project among:

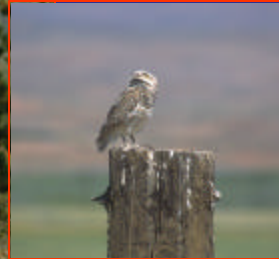


Sagebrush in the Great Basin

- 57 million acres of sagebrush in the Great Basin (54% of total remaining)



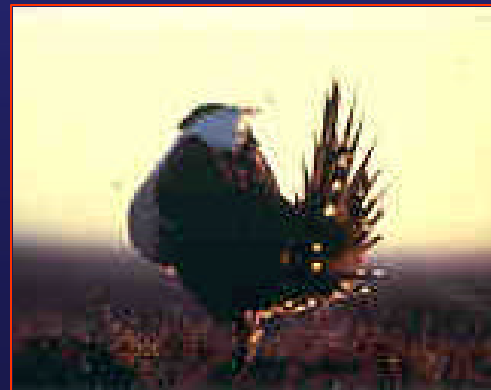
Great Diversity of Wildlife....



100 bird species

70 mammals

23 amphibian/reptiles



The Great Basin is about History, Culture, and Community

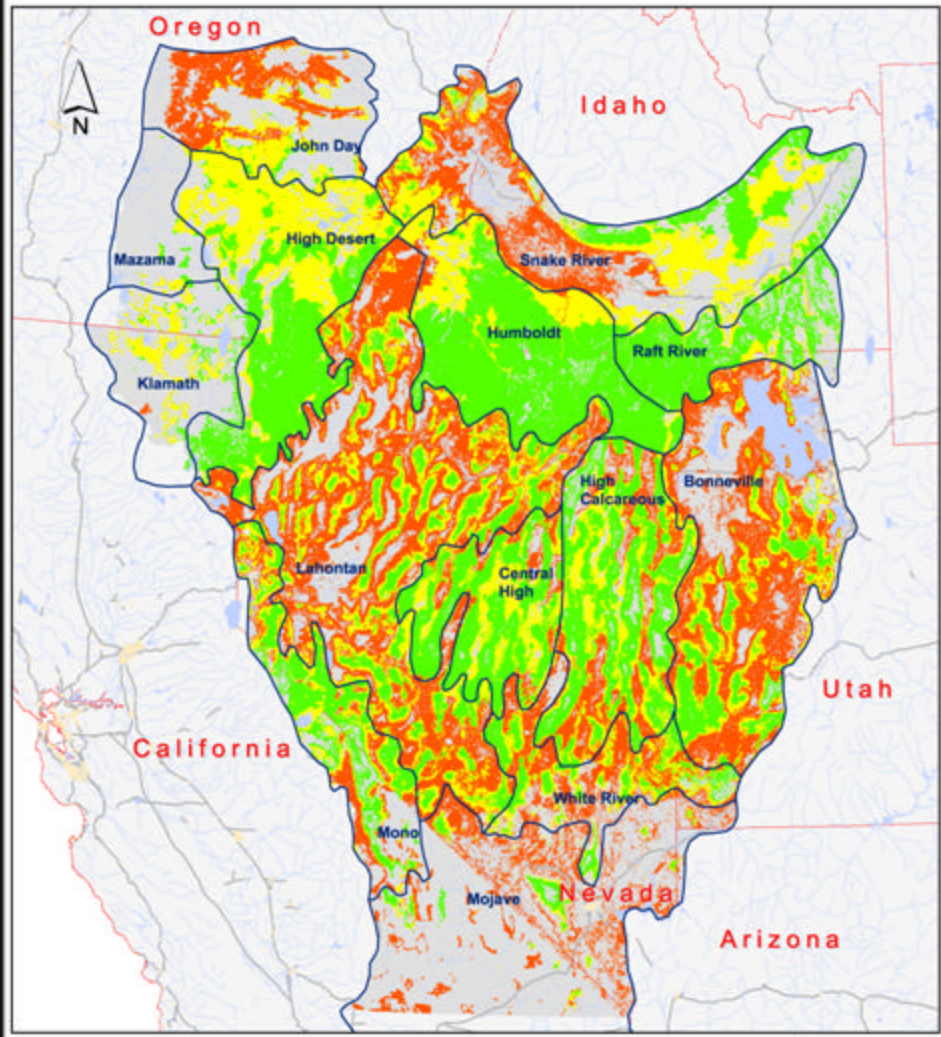


The Great Basin is in trouble!

- Native plant communities are being replaced with invasive species, wildfires are increasing, and pinyon pine and/or juniper are invading sagebrush habitats.
- The Nature Conservancy recently ranked the Great Basin (primarily Nevada/western Utah) as the third most imperiled ecosystem in the US due in large part to the ecological threat posed by invasive species.



Risk of Cheatgrass Displacement of Susceptible Native Vegetation



0 50 100 200 300 400 500 Kilometers

RISK ■ LOW ■ MODERATE ■ HIGH

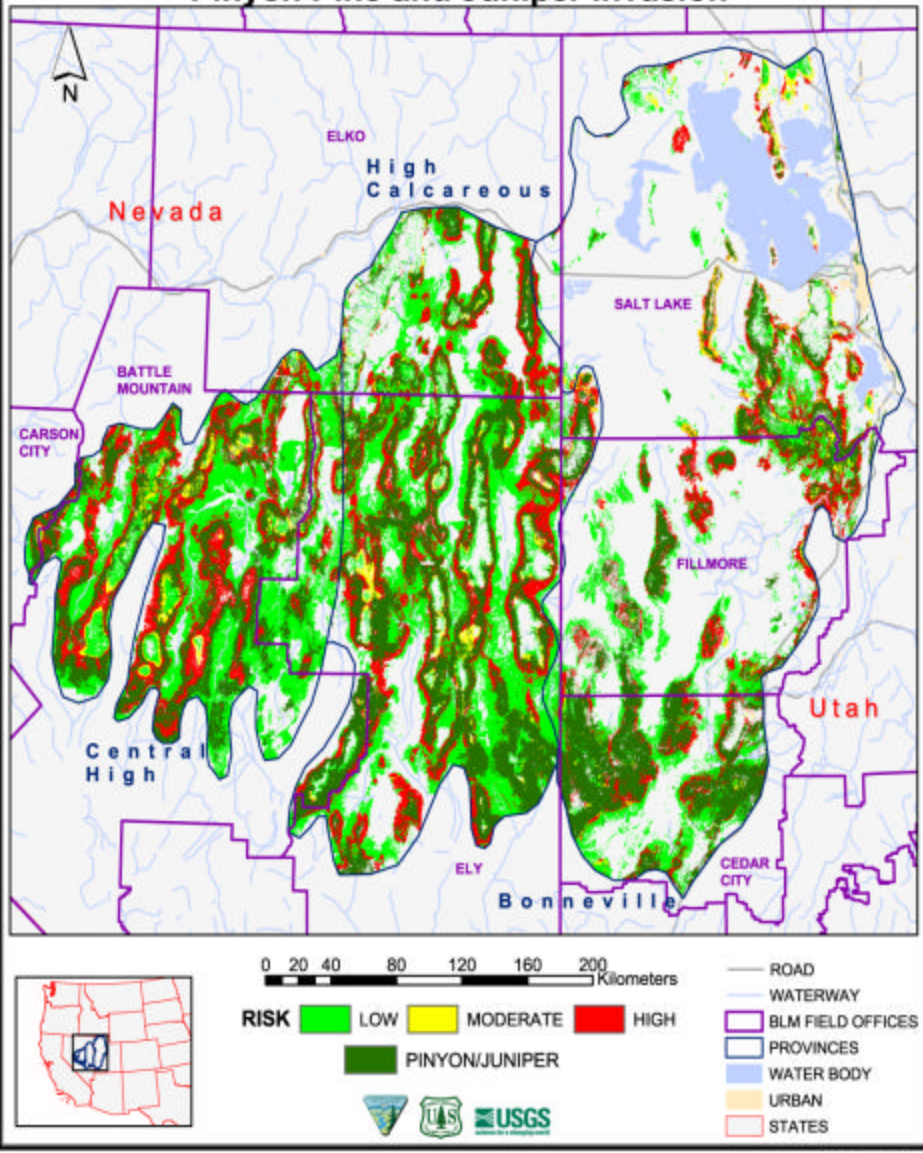
NOT MODELLED

- PROVINCES
- URBAN
- ROAD
- WATERWAY
- WATER BODY
- STATES

6 February 2003



Modelling the Risk of Sagebrush Displacement by Pinyon Pine and Juniper Invasion



10 February 2003



Communities and Economies at Risk



Wildlife at Risk



Sage thrasher



Big game (elk)

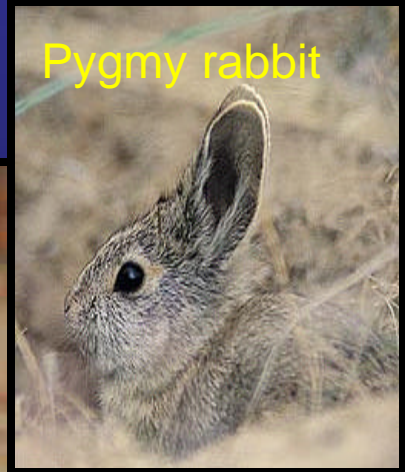
Sage sparrow



Sage grouse



Pygmy rabbit



1.7 million acres burned in the
Great Basin in 1999



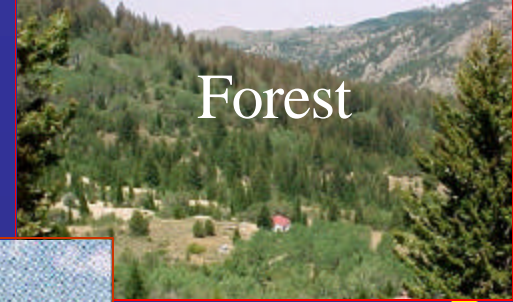
Fighting wildfires
and treating the
weeds that follow
won't reverse the
downward spiral of
degradation in the
Great Basin.....



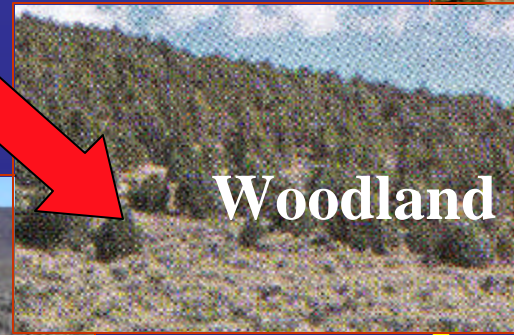
Research Goal– Healthy sagebrush communities that support sustainable resources and uses.



Great Basin Biomes



Forest



Woodland



Sagebrush



Salt Desert Shrub

Focus



4''

12''

24''

Annual Precipitation



What kind of information do we currently have?

Typically stand-level, single discipline, single site research.

What information do we need?

Operational scale, inter-disciplinary, multi-site research, focus on at risk communities.

Applicable to managers.

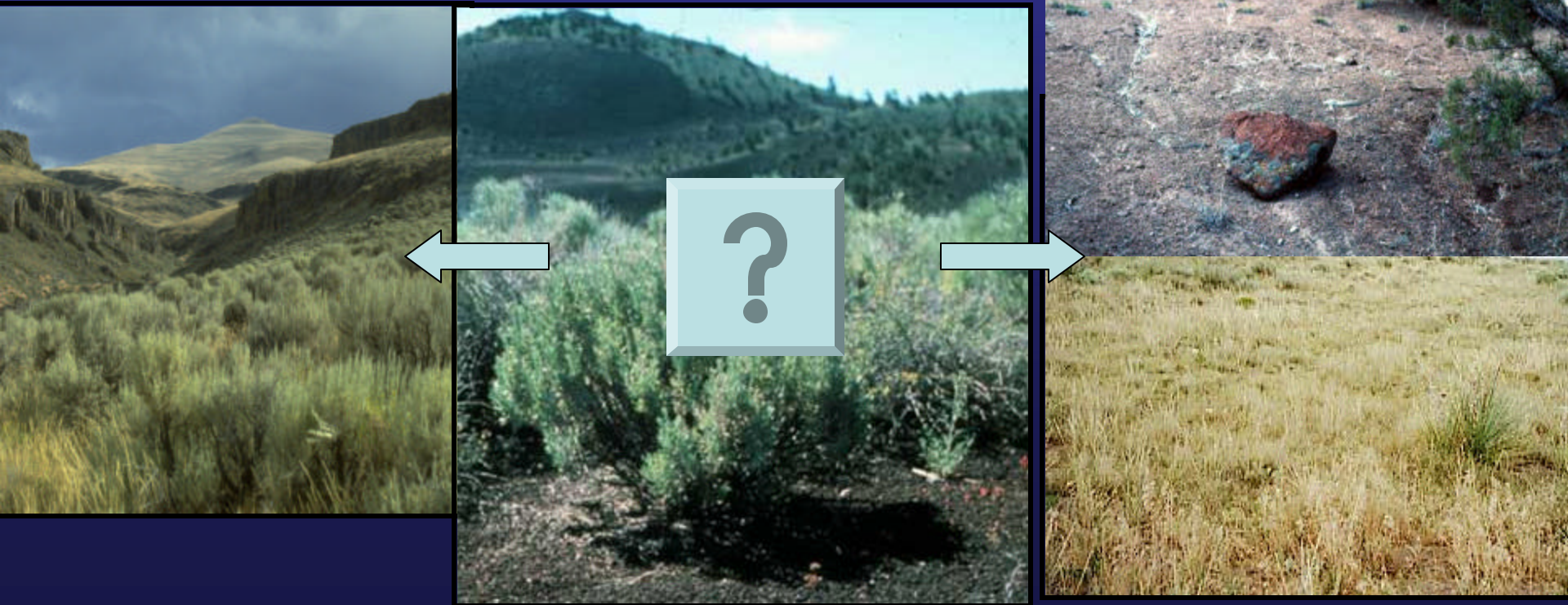
Triage Concept:

Management Use

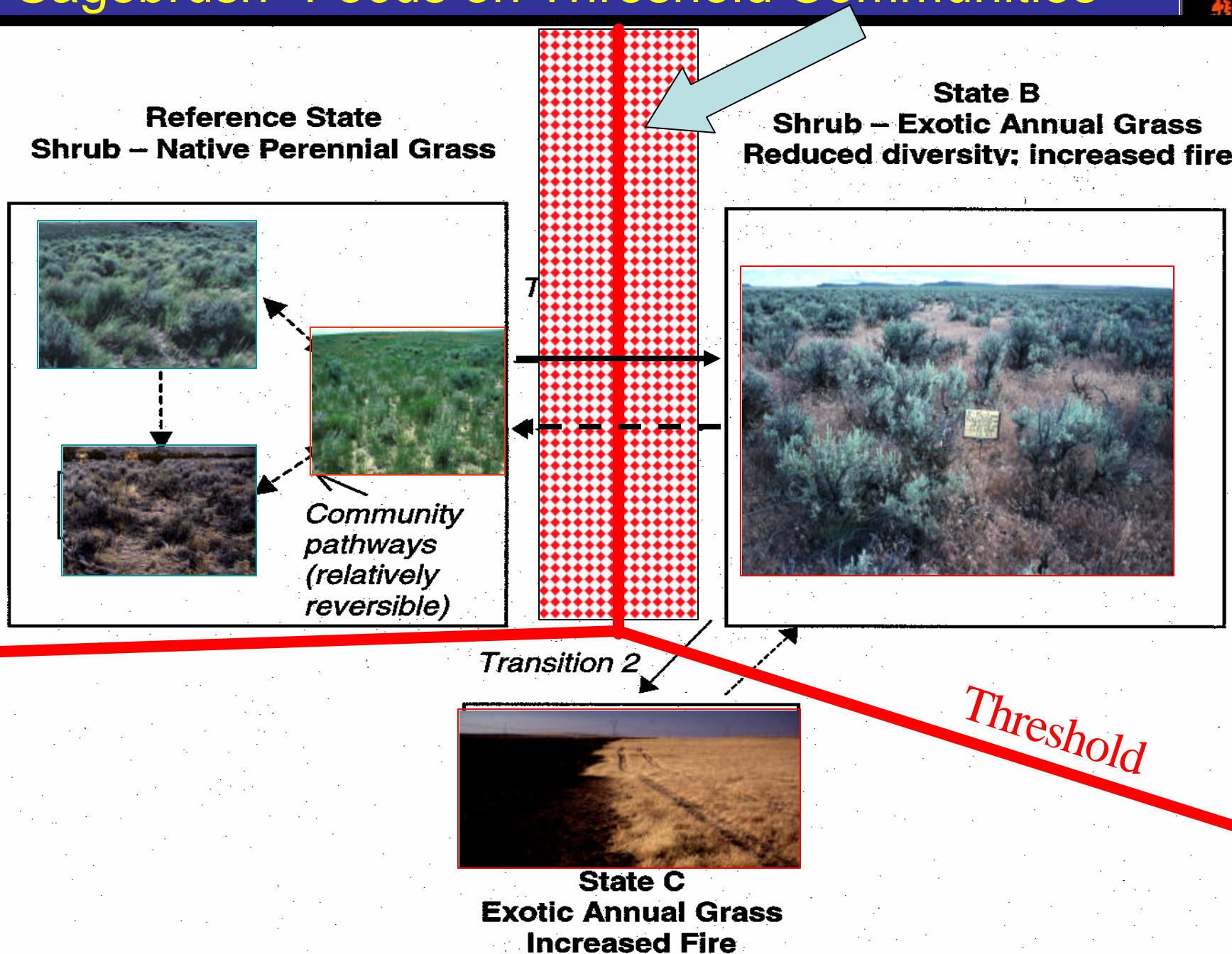
- Targeting areas that have not converted to invasive species.
- How do we prevent the downward spiral?

Research Use

- Concentrate on situations of uncertainty



Sagebrush- Focus on Threshold Communities



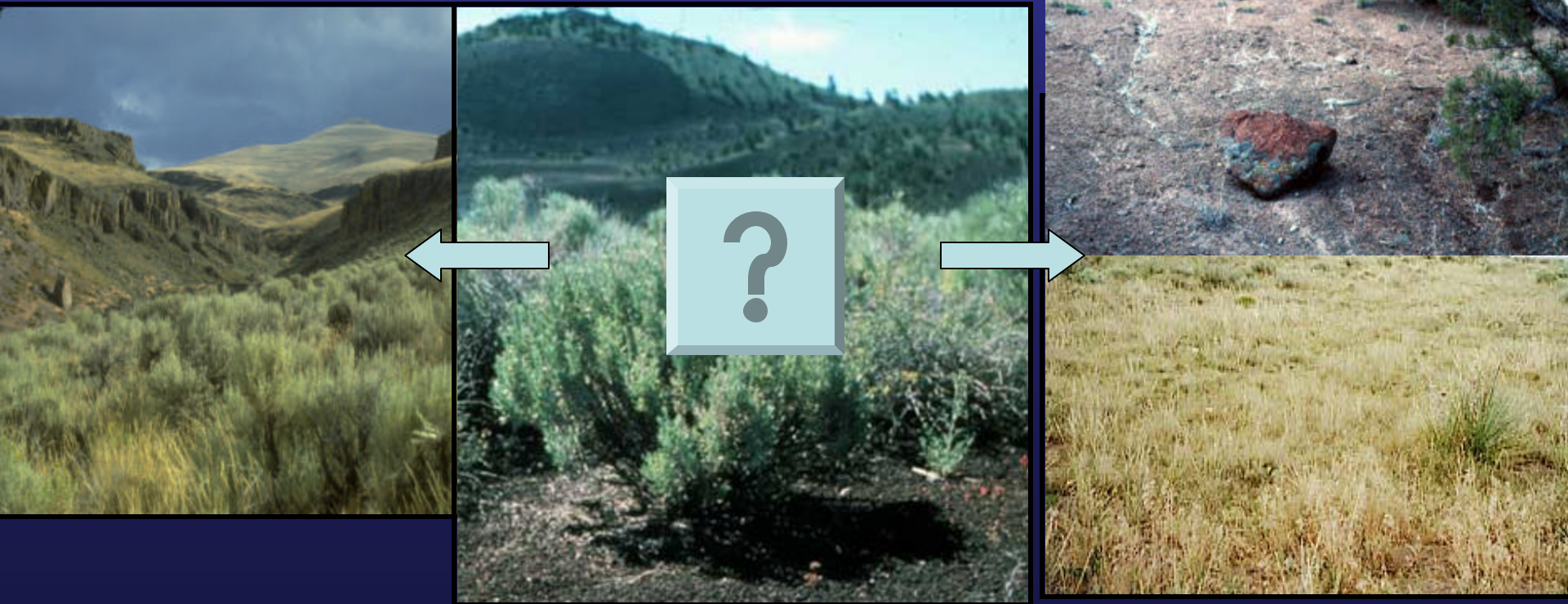
Triage Concept:

Management Use

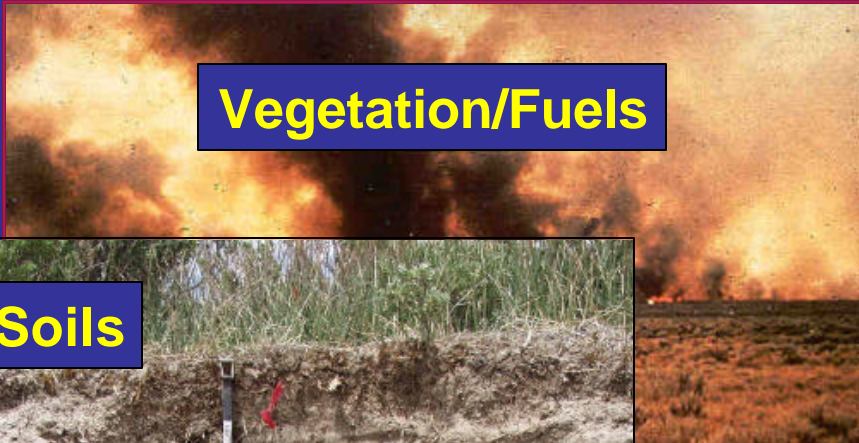
- Targeting areas that have not converted to invasive species.
- How do we prevent the downward spiral?

Research Use

- Concentrate on situations of uncertainty



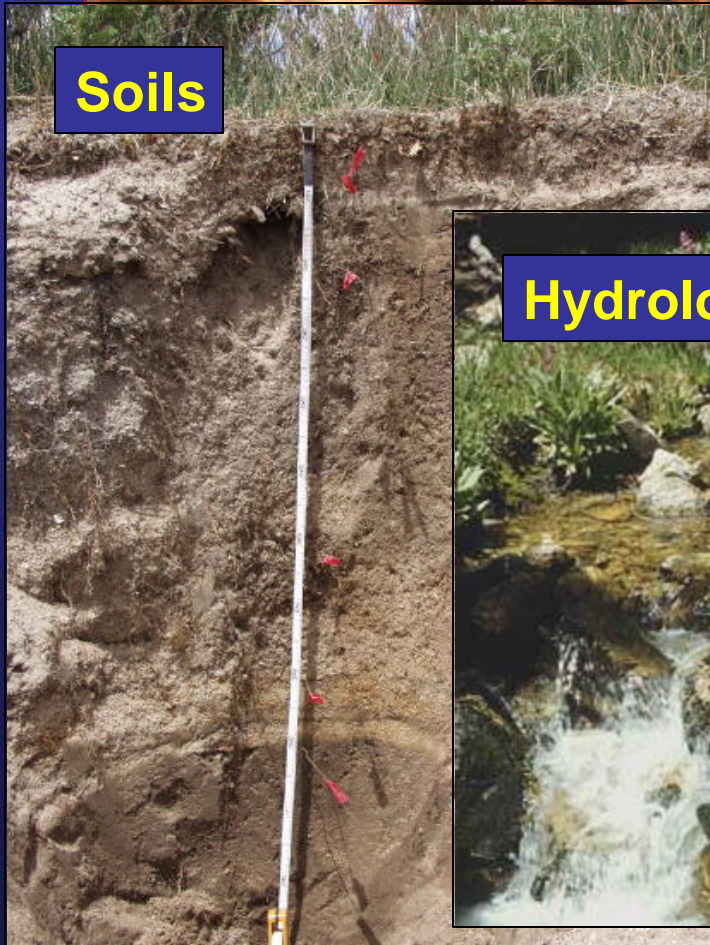
Disciplines Represented on Research Team



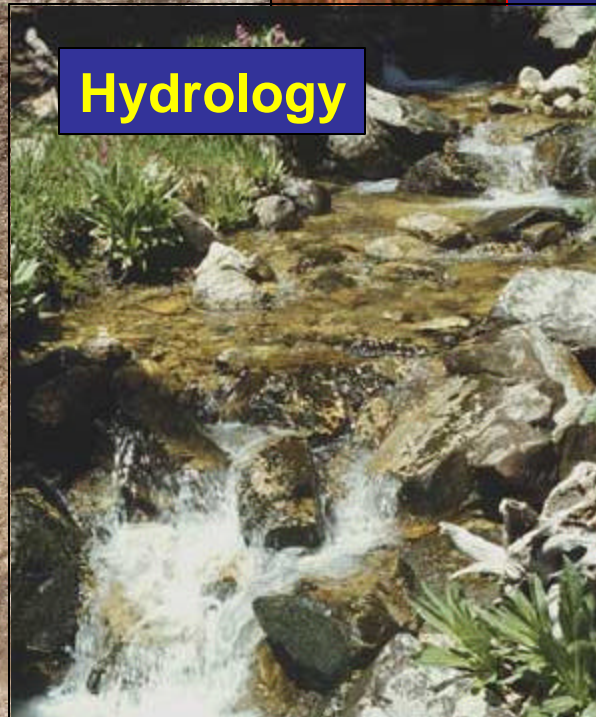
Vegetation/Fuels



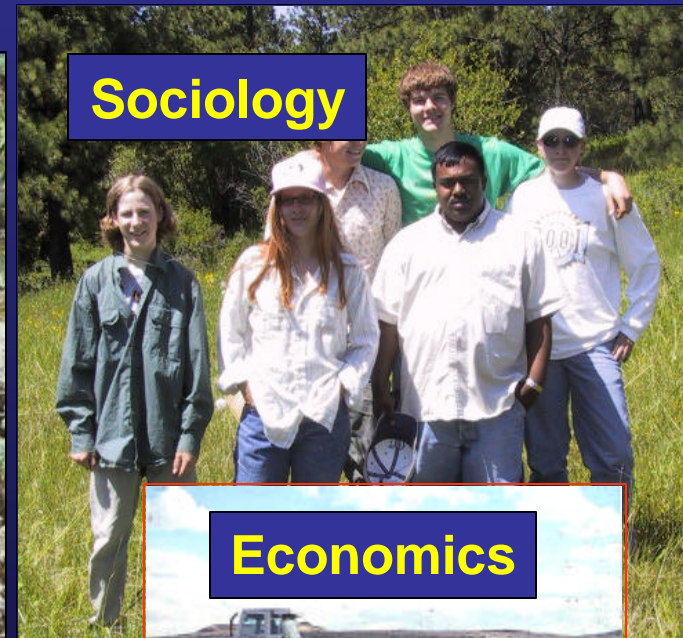
Wildlife



Soils



Hydrology

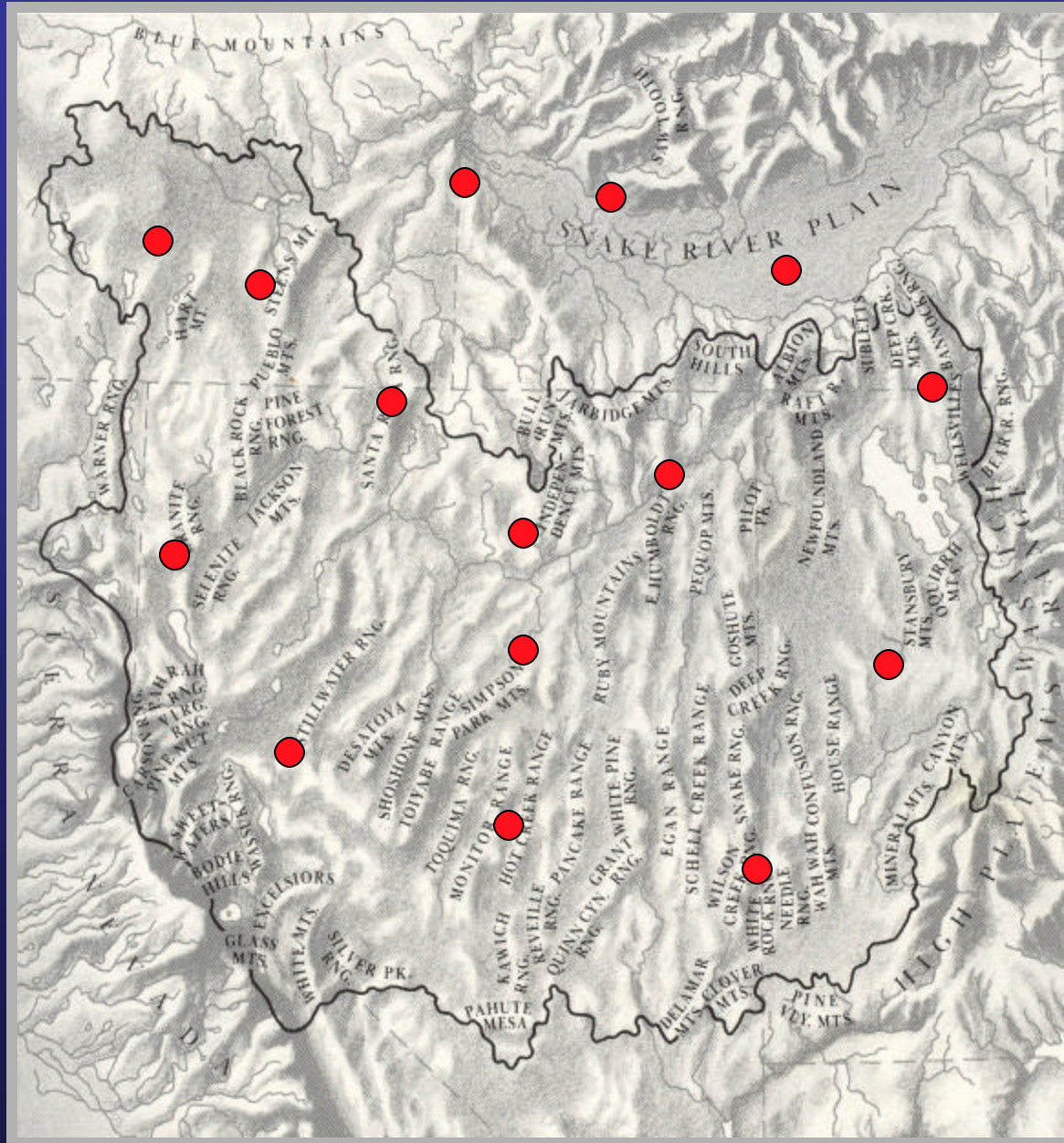


Sociology



Economics

Hypothetical Site Locations



Prescribed Fire



Proposed Treatments



Herbicide



With and without seeding

Mechanical



Control



**Elective treatments
selected by local manager?**

Deliverables:

- **User Guides** on known restoration treatments (2008).
- **A Fuel's Guide** (2008).
- Research on **Alternative Treatments across** the Great Basin (2010).
- **Focus** on Plants, Fuels, Wildlife, Watersheds, Economics, Social-Issues and their **Integration** (2010).

Follow that number

The FCC says cell phone users can keep their number and switch providers, **Business, C1**



After leading by 17 points in the fourth quarter, Seattle loses in Baltimore, **Sports, E1**

SportsExtra

MONDAY

November 24, 2003

The Oregonian

NORTHWEST EDITION

PORTLAND, OREGON

2001 PULITZER PRIZE WINNER FOR PUBLIC SERVICE

Managers and researchers work together to improve range conditions in the Great Basin

U.S. soldiers are seen in this image taken from video inspecting the body of a fellow soldier Sunday in Mosul, Iraq, after gunmen shot two U.S. soldiers. Iraqi teens then beat them with concrete bricks.

ASSOCIATED PRESS



Two U.S. service members are shot before teenagers pull them from their vehicle and beat them in a city once thought safe

By **MARIAM FAM**
THE ASSOCIATED PRESS

MOSUL, Iraq — Two U.S. soldiers were shot by gunmen then dragged from their wrecked vehicle by Iraqi teenagers and pummeled with concrete blocks, witnesses said, describing the killings as a burst of savagery in a city once safe for Americans.

Another soldier was killed by a bomb, and a U.S.-allied police chief was assassinated.

The U.S.-led coalition also said it grounded commercial flights after the military confirmed that a missile struck a DHL cargo plane that landed Saturday at Baghdad International Airport with its wing aflame.

Witnesses to the Mosul attack said gunmen shot two soldiers driving through the city center, sending their vehicle crashing into a wall. The 101st Airborne Division said the soldiers were driving to another garrison.

About a dozen swarming teenagers dragged the soldiers out of the wreck-

INSIDE

A helicopter crashes in Afghanistan, killing five U.S. soldiers and injuring seven others/**AB**

age and beat them with concrete blocks, the witnesses said.

"They lifted a block and hit them with it on the face," said Younis Mahmoud, 19.

It was unknown whether the soldiers were alive when pulled from the wreckage.

Please see **IRAQ**, Page A8

Medicare

Georgia president steps down

Higher ed

